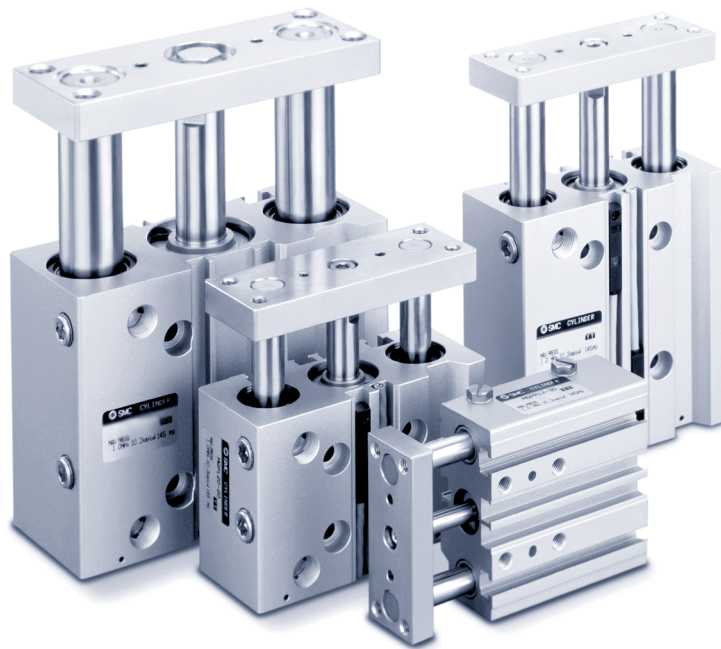


SMC Pneumatics, Inc.
The world's leader in pneumatics

***Introducing the Cylinder with a
“SPLASH” SMC Series MGP..***

“Splash Proof Guided Cylinder”



Material Handling

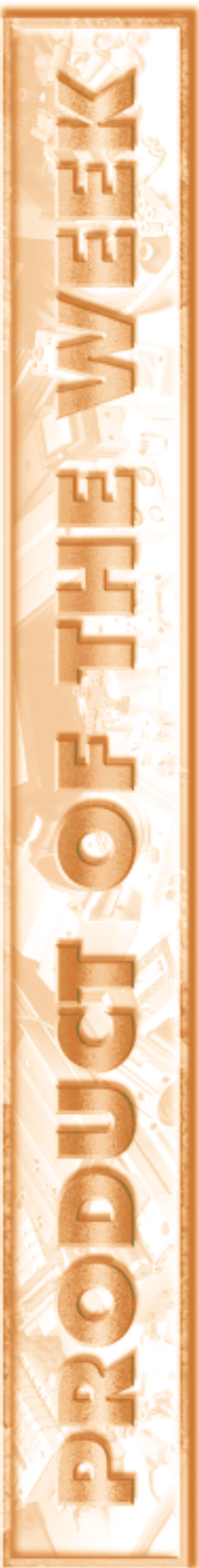
Assembly

Special Machinery

Medical

Testing Equipment

Food Processing



PRODUCT OF THE WEEK

Splash Proof Guided Cylinder

Many applications such as bottling or food processing require cylinders in areas exposed to moisture or liquid wash-down. The major cause of cylinder failure in these applications is due to moisture eroding the rod seals. SMC series MGP "Splash Proof Guided Cylinders" addresses this problem by incorporating a secondary rod wiper as well as utilizing special seal materials. This combination results in almost ten times the life over a standard cylinder. SMC also provides splash proof auto switches which utilize special construction and materials suitable for these environments.

Features and Benefits

- Secondary rod scraper
- Nitrile or fluoro seals
- Splash proof auto switches
- Stainless steel hardware and rods
- Other configuration also available

Specifications

Action	Double acting	
Fluid	Air	
Proof pressure	217 psi (1.5MPa)	
Max. operating pressure	145 psi (1.0MPa)	
Min. operating pressure	ø 12, ø16	17.4 psi (0.12Mpa)
	ø 20 - ø100	14.5 psi (0.1MPa)
Ambient and fluid temperature	14 - 140°F (-10 - 60°C)	
XB6 high temperature	14 - 300°F (-10 - 150°C)	
Operating piston speed	ø12 - ø63	2 - 20 in/s (50 - 500 mm/s)
	ø80 - ø100	2 - 16 in/s (50 - 400mm/s)
XB13 low speed	ø12 - ø100	0.2 - 2 in/s (5 - 50mm/s)
Cushion	Rubber bumper both ends	
Lubrication	Not required	
Stroke tolerance	+ 1.5	
	0mm	

Note: Slide bearings, auto switch capable.

How To Order

MGPM 25

Bore Size

12	12mm
16	16mm
20	20mm
25	25mm
32	32mm
40	40mm
50	50mm
63	63mm
80	80mm
100	100mm

R - 100 - Y7BAL

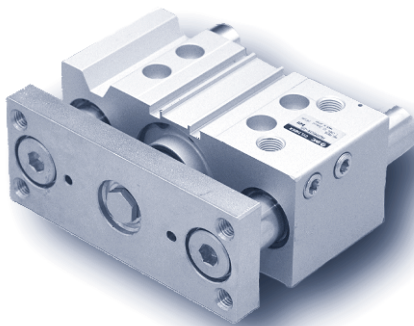
Splash proof 2 color
Solid state auto switch

Cylinder stroke (mm)
Refer to catalog N346 for standard stroke.

Water resistant

R	Seals NBR (Nitrile Rubber)
V	Seals FKM (Fluoro Rubber)

*This option is available for many other SMC cylinder series. Consult your local representative for details.



For further information, contact your local SMC branch office . . .

ATLANTA, GA
(770) 624-1940

CHICAGO, IL
(630) 393-0080

DALLAS, TX
(972) 406-0082

INDIANAPOLIS, IN
(317) 899-4743

MINNEAPOLIS, MN
(952) 943-1299

PHOENIX, AZ
(623) 492-0908

SAN FRANCISCO, CA
(408) 943-9600

AUSTIN, TX
(512) 926-2646

CINCINNATI, OH
(859) 647-5600

DETROIT, MI
(248) 299-0202

LOS ANGELES, CA
(714) 669-1701

NASHVILLE, TN
(615) 331-0020

PORTLAND, OR
(503) 252-9299

ST. LOUIS, MO
(314) 209-0080

BOSTON, MA
(978) 326-3600

CLEVELAND, OH
(330) 963-2727

HOUSTON, TX
(713) 460-0762

MILWAUKEE, WI
(262) 827-0080

NEWARK, NJ
(908) 253-3241

RICHMOND, VA
(804) 222-2762

TAMPA, FL
(813) 243-8350

CHARLOTTE, NC
(704) 597-9292

COLUMBUS, OH
(614) 895-9765



Business Development Center, Indianapolis, IN

ROCHESTER, NY
(716) 321-1300

TULSA, OK
(918) 252-7820