

# Compact Cylinder Double Acting, Double Rod Series **NCQ8W**

Bore size: 056 (9/16"), 075 (3/4"), 106 (1-1/16"), 150 (1-1/2"), 200 (2"), 250 (2-1/2")

## How to Order

**Without auto switch**

**NCQ8W**

**B** **056** **025**

**X-Option**

Nil	Standard
<b>XB6</b> <small>Note 3)</small>	High temp.
<b>XC4</b>	With scraper

Note 3) XB6: Not available with magnet.

\*For detailed made to order specifications, refer to page 46.

**With auto switch**

**NCDQ8W**

**B** **056** **025** **M9B** **S**

**Number of auto switches**

Nil	2 pcs.
<b>S</b>	1 pc.
<b>n</b>	"n" pcs.

**Auto switch type**

Nil	Without auto switch (Built-in magnet cylinder)
-----	--

\*Refer to the table below for auto switch model numbers.

\*Auto switches are shipped together, (but not assembled).

**Built-in magnet**

**Double rod**

**Mounting**

<b>B</b>	Through-hole
<b>A</b>	Both ends tapped
<b>E</b>	Front screw clearance hole
<b>N</b>	Through screw clearance hole

**Nominal bore size**

<b>056</b>	9/16"
<b>075</b>	3/4"
<b>106</b>	1-1/16"
<b>150</b>	1-1/2"
<b>200</b>	2"
<b>250</b>	2 1/2"

**Cylinder stroke (inch)**

Symbol	Stroke	Symbol	Stroke	Symbol	Stroke	Symbol	Stroke
<b>012</b>	1/8"	<b>062</b>	5/8"	<b>125</b>	1-1/4"	<b>250</b>	2-1/2"
<b>025</b> <small>Note 1)</small>	1/4"	<b>075</b>	3/4"	<b>150</b>	1-1/2"	<b>300</b>	3"
<b>037</b>	3/8"	<b>087</b>	7/8"	<b>175</b>	1-3/4"	<b>350</b>	3-1/2"
<b>050</b>	1/2"	<b>100</b>	1"	<b>200</b>	2"	<b>400</b>	4"

Note 1) With switch is available on strokes 025 (1/4") and greater.

**Body option**

Nil	Standard (Female rod end)
<b>C</b> <small>Note 2)</small>	Rubber bumper
<b>M</b>	Male rod end

Note 2) Stroke will be reduced by 0.06" for rubber bumper type.

\*Combination of body options(CM) is available.

## Applicable Auto Switches

Type	Special function	Electrical entry	Indicator light	Wiring (output)	Load voltage			Auto switch model		Lead wire length (in)*			Applicable load	
					DC	AC	Perpendicular	In-line	20 (0.5m) (Nil)	118 (3m) (L)	197 (5m) (Z)			
												5 V		
Reed switch	-	Grommet	Yes	3-wire (NPN equiv.)	-	5 V	-	<b>A96V</b>	<b>A96</b>	●	●	-	IC circuit	-
								<b>A90V</b>	<b>A90</b>	●	●	-	IC circuit	Relay, PLC
								<b>A93V</b>	<b>A93</b>	●	●	-	-	-
Solid state switch	-	Grommet	Yes	3-wire (NPN)	24 V	5 V, 12 V	-	<b>M9NV</b>	<b>M9N</b>	●	●	○	IC circuit	Relay, PLC
				3-wire (PNP)				<b>M9PV</b>	<b>M9P</b>	●	●	○		
				2-wire				<b>M9BV</b>	<b>M9B</b>	●	●	○		
				3-wire (NPN)				<b>F9NWV</b>	<b>F9NW</b>	●	●	○	IC circuit	
				3-wire (PNP)				<b>F9PWV</b>	<b>F9PW</b>	●	●	○		
				2-wire				<b>F9BWV</b>	<b>F9BW</b>	●	●	○		
				-				<b>F9BA</b>	-	●	○			

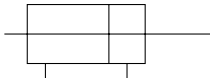
\*Lead wire length symbols: 20in (0.5 m)..... Nil (Example) M9N  
 118in (3 m)..... L M9NL  
 197in (5 m)..... Z M9NZ

\*Solid state switches marked with a "O" symbol are produced upon receipt of order.

# Series NCQ8W



JIS Symbol  
Double acting,  
Double rod



## Specifications

Bore size	056 (9/16")	075 (3/4")	106 (1-1/16")	150 (1-1/2")	200 (2")	250 (2-1/2")
Piping size	#10-32UNF	#10-32UNF	NPT1/8	NPT1/8	NPT1/8	NPT1/4
Type	Pneumatic (Non-lube)					
Action	Double acting, Double rod					
Fluid	Air					
Proof pressure	300PSI (2.1MPa)					
Maximum operating pressure	200PSI (1.4MPa)					
Minimum operating pressure	056		11PSI (0.07MPa)			
	075 to 250		8PSI (0.05MPa)			
Ambient and fluid temperature	Without auto switch		15 to 150°F (-10 to 65°C) (No freezing)			
	With switch		15 to 140°F (-10 to 60°C) (No freezing)			
Cushion	Rubber bumper					
Rod end thread	Female thread					
Rod end thread tolerance	Class 2					
Stroke tolerance	0 to +0.04 in (+1.0mm)					
Mounting	Through-hole (B), Both ends tapped (A), SCH (E, M)					
Piston speed	2 to 20in/sec (50 to 500mm/s)					

## Applicable Stroke

Unit: inch

Bore size	Standard stroke
<b>056 (9/16")</b>	012 (1/8"), 025 (1/4"), 037 (3/8")
<b>075 (3/4")</b>	050 (1/2"), 062 (5/8"), 075 (3/4")
<b>106 (1-1/16")</b>	087 (7/8"), 100 (1"), 125 (1-1/4")
<b>150 (1-1/2")</b>	150 (1-1/2"), 175 (1-3/4"), 200 (2")
<b>200 (2")</b>	250 (2-1/2"), 300 (3")
<b>250 (2-1/2")</b>	350 (3-1/2"), 400 (4")

\* With switch is available on strokes 025 (1/4") and greater.

## Theoretical Output Table

Unit: lbs

Bore size (in)	Operating pressure/PSI (MPa)			
	45 (0.3)	75 (0.5)	145 (1.0)	200 (1.4)
<b>056 (9/16")</b>	8.87	14.6	28.6	39.2
<b>075 (3/4")</b>	16.4	27.0	52.9	72.5
<b>106 (1-1/16")</b>	30.8	50.8	99.5	136
<b>150 (1-1/2")</b>	65.7	108	212	290
<b>200 (2")</b>	121	200	391	536
<b>250 (2-1/2")</b>	201	330	648	888

## Weights

### Double Acting, Double Rod, Without Switch

(OZ)

Model \ Stroke	012 (1/8")	025 (1/4")	037 (3/8")	050 (1/2")	062 (5/8")	075 (3/4")	087 (7/8")	100 (1")	125 (1-1/4")	150 (1-1/2")	175 (1-3/4")	200 (2")	250 (2-1/2")	300 (3")	350 (3-1/2")	400 (4")
NCQ8W□056-□	1.33	1.39	1.46	1.52	1.69	1.86	2.03	2.20	2.54	2.88	3.21	3.55	4.23	4.91	5.58	6.26
NCQ8W□075-□	1.92	2.04	2.15	2.26	2.52	2.77	3.02	3.28	3.79	4.29	4.80	5.31	6.33	7.34	8.36	9.37
NCQ8W□106-□	3.71	4.14	4.56	4.99	5.42	5.84	6.34	6.84	7.83	8.83	9.82	10.9	12.8	14.8	16.8	18.8
NCQ8W□150-□	7.01	7.80	8.50	9.21	9.91	9.63	10.4	11.1	12.5	13.9	15.4	16.8	19.6	22.4	25.3	28.1
NCQ8W□200-□	12.9	13.7	14.5	15.4	16.2	17.0	16.5	17.3	19.0	20.7	22.3	24.0	27.3	30.6	33.9	37.2
NCQ8W□250-□	18.7	19.6	20.5	21.3	22.2	21.0	21.9	22.8	24.6	26.3	28.1	29.9	33.4	37.0	40.6	44.1

### Double Acting, Double Rod, With Switch

(OZ)

Model \ Stroke	012 (1/8")	025 (1/4")	037 (3/8")	050 (1/2")	062 (5/8")	075 (3/4")	087 (7/8")	100 (1")	125 (1-1/4")	150 (1-1/2")	175 (1-3/4")	200 (2")	250 (2-1/2")	300 (3")	350 (3-1/2")	400 (4")
NCDQ8W□056-□	—	2.70	2.76	2.72	2.89	3.06	3.23	3.40	3.74	4.08	4.41	4.75	5.43	6.11	6.78	7.46
NCDQ8W□075-□	—	4.22	4.34	4.24	4.49	4.75	5.00	5.25	5.76	6.27	6.78	7.28	8.30	9.32	10.4	11.4
NCDQ8W□106-□	—	8.19	8.62	9.04	9.47	9.19	9.69	10.2	11.2	12.2	13.2	14.2	16.2	18.2	20.2	22.2
NCDQ8W□150-□	—	17.3	18.0	18.7	19.4	15.5	16.2	16.9	18.3	19.8	21.2	22.6	25.4	28.3	31.1	33.9
NCDQ8W□200-□	—	33.3	34.2	35.0	35.8	36.6	24.7	25.5	27.2	28.8	30.5	32.2	35.5	38.8	42.1	45.4
NCDQ8W□250-□	—	50.0	50.9	51.7	52.6	31.2	32.0	32.9	34.7	36.5	38.3	40.0	43.6	47.2	50.7	54.3

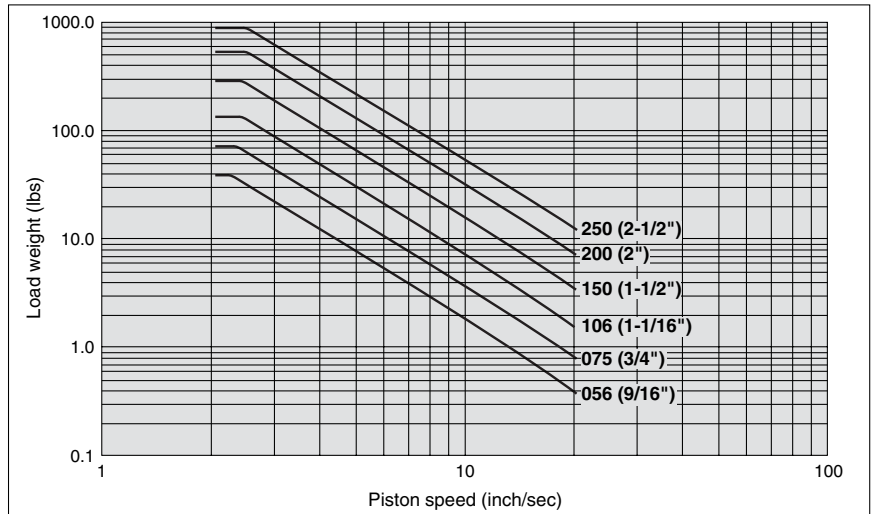
# Compact Cylinder Double Acting, Double Rod *Series NCQ8W*

## Option Weights

Unit: OZ

Bore size	Clevis
056 (9/16")	0.71
075 (3/4")	0.93
106 (1-1/16")	1.64
150 (1-1/2")	4.16
200 (2")	6.04
250 (2-1/2")	8.74

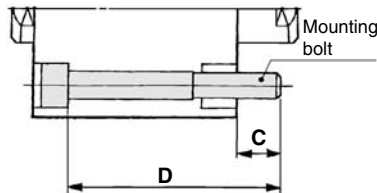
## Allowable Kinetic Energy



# Series NCQ8W

## Mounting Bolt

Mounting method: Mounting bolt for through-hole style of NCQ8WB is available as an option.



## Mounting Bolt Size for NCQ8WB056 to 250-□ (Without Auto Switch)

(Inch)

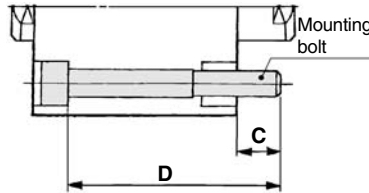
Model	C	D	Bolt size
<b>NCQ8WB056-012</b>	0.18	7/8	#4-40UNC- 7/8
025		1	1
037		1-1/8	1-1/8
050		1-1/4	1-1/4
062		1-3/8	1-3/8
075		1-1/2	1-1/2
087		1-5/8	1-5/8
100		1-3/4	1-3/4
125		2	2
150		2-1/4	2-1/4
175		2-1/2	2-1/2
200		2-3/4	2-3/4
250		3-1/4	3-1/4
300		3-3/4	3-3/4
350		4-1/4	4-1/4
400		4 3/4	4 3/4
<b>NCQ8WB075-012</b>	0.21	7/8	#6-32UNC- 7/8
025		1	1
037		1-1/8	1-1/8
050		1-1/4	1-1/4
062		1-3/8	1-3/8
075		1-1/2	1-1/2
087		1-5/8	1-5/8
100		1-3/4	1-3/4
125		2	2
150		2-1/4	2-1/4
175		2-1/2	2-1/2
200		2-3/4	2-3/4
250		3-1/4	3-1/4
300		3-3/4	3-3/4
350		4-1/4	4-1/4
400		4 3/4	4-3/4
<b>NCQ8WB106-012</b>	0.21	1-1/8	#6-32UNC- 1-1/8
025		1-1/4	1-1/4
037		1-3/8	1-3/8
050		1-1/2	1-1/2
062		1-5/8	1-5/8
075		1-3/4	1-3/4
087		1-7/8	1-7/8
100		2	2
125		2-1/4	2-1/4
150		2-1/2	2-1/2
175		2-3/4	2-3/4
200		3	3
250		3-1/2	3-1/2
300		4	4
350		4-1/2	4-1/2
400		5	5

Model	C	D	Bolt size
<b>NCQW8B150-012</b>	0.33	1-1/4	#10-24UNC- 1-1/4
025		1-3/8	1-3/8
037		1-1/2	1-1/2
050		1-5/8	1-5/8
062		1-3/4	1-3/4
075		1-7/8	1-7/8
087		2	2
100		2-1/8	2-1/8
125		2-3/8	2-3/8
150		2-5/8	2-5/8
175		2-7/8	2-7/8
200		3-1/8	3-1/8
250		3-5/8	3-5/8
300		4-1/8	4-1/8
350		4-5/8	4-5/8
400		5-1/8	5-1/8
<b>NCQ8WB200-012</b>	0.39	1-3/8	#10-24UNC- 1-3/8
025		1-1/2	1-1/2
037		1-5/8	1-5/8
050		1-3/4	1-3/4
062		1-7/8	1-7/8
075		2	2
087		2-1/8	2-1/8
100		2-1/4	2-1/4
125		2-1/2	2-1/2
150		2-3/4	2-3/4
175		3	3
200		3-1/4	3-1/4
250		3-3/4	3-3/4
300		4-1/4	4-1/4
350		4-3/4	4-3/4
400		5-1/4	5-1/4
<b>NCQW8B250-012</b>	0.45	1-5/8	1/4-20UNC- 1-5/8
025		1-3/4	1-3/4
037		1-7/8	1-7/8
050		2	2
062		2-1/8	2-1/8
075		2-1/4	2-1/4
087		2-3/8	2-3/8
100		2-1/2	2-1/2
125		2-3/4	2-3/4
150		3	3
175		3-1/4	3-1/4
200		3-1/2	3 1/2
250		4	4
300		4-1/2	4-1/2
350		5	5
400		5-1/2	5-1/2

# Compact Cylinder Double Acting, Double Rod *Series NCQ8W*

## Mounting Bolt

Mounting method: Mounting bolt for through-hole style of NCQ8WB is available as an option.



## Mounting Bolt Size for NCDQ8WB056 to 250-□ (With Auto Switch)

(Inch)

Model	C	D	Bolt size
<b>NCDQ8WB056-025</b>	0.18	1-7/8	#4-40UNC- 1-7/8
<b>037</b>		2	2
<b>050</b>		2-1/8	2-1/8
<b>062</b>		2-1/4	2-1/4
<b>075</b>		2-3/8	2-3/8
<b>087</b>		2-1/2	2-1/2
<b>100</b>		2-5/8	2-5/8
<b>125</b>		2-7/8	2-7/8
<b>150</b>		3-1/8	3-1/8
<b>175</b>		3-3/8	3-3/8
<b>200</b>		3-5/8	3-5/8
<b>250</b>		4-1/8	4-1/8
<b>300</b>		4-5/8	4-5/8
<b>350</b>		5-1/8	5-1/8
<b>400</b>		5-5/8	5-5/8
<b>NCDQ8WB075-025</b>		0.21	1-7/8
<b>037</b>	2		2
<b>050</b>	2-1/8		2-1/8
<b>062</b>	2-1/4		2-1/4
<b>075</b>	2-3/8		2-3/8
<b>087</b>	2-1/2		2-1/2
<b>100</b>	2-5/8		2-5/8
<b>125</b>	2-7/8		2-7/8
<b>150</b>	3-1/8		3-1/8
<b>175</b>	3-3/8		3-3/8
<b>200</b>	3-5/8		3-5/8
<b>250</b>	4-1/8		4-1/8
<b>300</b>	4-5/8		4-5/8
<b>350</b>	5-1/8		5-1/8
<b>400</b>	5-5/8		5-5/8
<b>NCDQ8WB106-025</b>	0.21		2-1/8
<b>037</b>		2-1/4	2-1/4
<b>050</b>		2-3/8	2-3/8
<b>062</b>		2-1/2	2-1/2
<b>075</b>		2-5/8	2-5/8
<b>087</b>		2-3/4	2-3/4
<b>100</b>		2-7/8	2-7/8
<b>125</b>		3-1/8	3-1/8
<b>150</b>		3-3/8	3-3/8
<b>175</b>		3-5/8	3-5/8
<b>200</b>		3-7/8	3-7/8
<b>250</b>		4-3/8	4-3/8
<b>300</b>		4-7/8	4-7/8
<b>350</b>		5-3/8	5-3/8
<b>400</b>		5-7/8	5-7/8

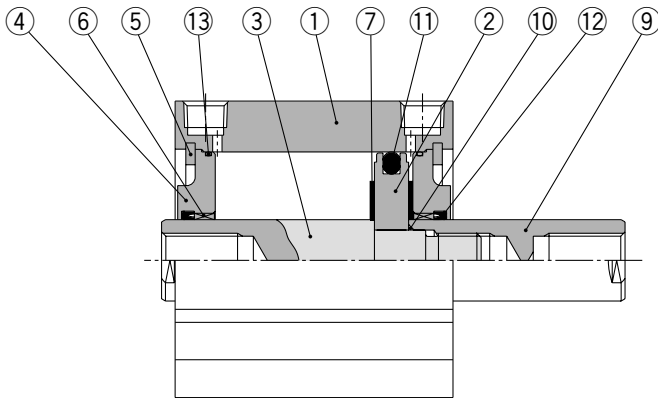
Model	C	D	Bolt size
<b>NCDQ8BW150-025</b>	0.33	2-1/4	#10-24UNC- 2-1/4
<b>037</b>		2-3/8	2-3/8
<b>050</b>		2-1/2	2-1/2
<b>062</b>		2-5/8	2-5/8
<b>075</b>		2-3/4	2-3/4
<b>087</b>		2-7/8	2-7/8
<b>100</b>		3	3
<b>125</b>		3-1/4	3-1/4
<b>150</b>		3-1/2	3-1/2
<b>175</b>		3-3/4	3-3/4
<b>200</b>		4	4
<b>250</b>		4-1/2	4-1/2
<b>300</b>		5	5
<b>350</b>		5-1/2	5-1/2
<b>400</b>		6	6
<b>NCDQ8WB200-025</b>		0.39	2-3/8
<b>037</b>	2-1/2		2-1/2
<b>050</b>	2-5/8		2-5/8
<b>062</b>	2-3/4		2-3/4
<b>075</b>	2-7/8		2-7/8
<b>087</b>	3		3
<b>100</b>	3-1/8		3-1/8
<b>125</b>	3-3/8		3-3/8
<b>150</b>	3-5/8		3-5/8
<b>175</b>	3-7/8		3-7/8
<b>200</b>	4-1/8		4-1/8
<b>250</b>	4-5/8		4-5/8
<b>300</b>	5-1/8		5-1/8
<b>350</b>	5-5/8		5-5/8
<b>400</b>	6-1/8		6-1/8
<b>NCDQ8WB250-025</b>	0.45		2-5/8
<b>037</b>		2-3/4	2-3/4
<b>050</b>		2-7/8	2-7/8
<b>062</b>		3	3
<b>075</b>		3-1/8	3-1/8
<b>087</b>		3-1/4	3-1/4
<b>100</b>		3-3/8	3-3/8
<b>125</b>		3-5/8	3-5/8
<b>150</b>		3-7/8	3-7/8
<b>175</b>		4-1/8	4-1/8
<b>200</b>		4-3/8	4-3/8
<b>250</b>		4-7/8	4-7/8
<b>300</b>		5-3/8	5-3/8
<b>350</b>		5-7/8	5-7/8
<b>400</b>		6-3/8	6-3/8

# Series NCQ8W

## Construction

### Without auto switch

Here is the typical, cross-sectional construction. For details for each model, refer to the instruction manual.



### Parts List

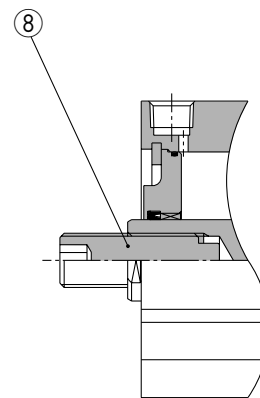
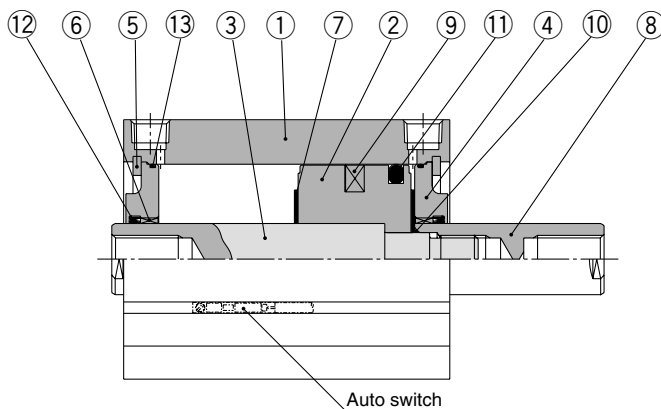
No.	Description	Material	Remarks
1	<b>Cylinder tube</b>	Aluminum alloy	Hard anodized
2	<b>Piston</b>	Aluminum alloy	Chromated
3	<b>Piston rod A</b>	Stainless steel	056 to 106
		Carbon steel	150 to 250 Hard chrome plated
4	<b>Collar</b>	Aluminum alloy	Anodized
5	<b>Snap ring</b>	Carbon tool steel	Phosphate coated
6	<b>Bushing</b>	Phosphor bronze alloy	200 and 250 only
7	<b>Rubber bumper</b>	NBR	Use for w/ rubber bumper only.

### Repair Parts: Standard Seal Kit for Double Acting, Double Rod

Bore size	Kit no.	Remarks
056 (9/16")	NCQ8WB056-PS	Piston seal, rod seal and tube gasket are included.
075 (3/4")	NCQ8WB075-PS	
106 (1-1/16")	NCQ8WB106-PS	
150 (1-1/2")	NCQ8WB150-PS	
200 (2")	NCQ8WB200-PS	
250 (2-1/2")	NCQ8WB250-PS	

### With auto switch

Here is the typical, cross-sectional construction. For details for each model, refer to the instruction manual.



### Male thread

No.	Description	Material	Remarks
8	<b>Stud</b>	Steel alloy	Electroless nickel plated
		Stainless steel	056 to 106
9	<b>Piston rod B</b>	Carbon steel	150 to 250 Hard chrome plated
		NBR	150 and more only
10	<b>Piston gasket</b>	NBR	
11	<b>Piston seal</b>	NBR	
12	<b>Rod seal</b>	NBR	
13	<b>Tube gasket</b>	NBR	

### Repair Parts: -XB6 Seal Kit for Double Acting, Double Rod

Bore size	Kit no.	Remarks
056 (9/16")	NCQ8WB056-XB6-PS	Piston seal, rod seal, and tube gasket are included.
075 (3/4")	NCQ8WB075-XB6-PS	
106 (1-1/16")	NCQ8WB106-XB6-PS	
150 (1-1/2")	NCQ8WB150-XB6-PS	
200 (2")	NCQ8WB200-XB6-PS	
250 (2-1/2")	NCQ8WB250-XB6-PS	

### Parts List

No.	Description	Material	Remarks
1	<b>Cylinder tube</b>	Aluminum alloy	Hard anodized
2	<b>Piston</b>	Aluminum alloy	Chromated
3	<b>Piston rod A</b>	Stainless steel	056 to 106
		Carbon steel	150 to 250 Hard chrome plated
4	<b>Collar</b>	Aluminum alloy	Anodized
5	<b>Snap ring</b>	Carbon tool steel	Phosphate coated
6	<b>Bushing</b>	Phosphor bronze alloy	200 and 250 only
7	<b>Rubber bumper</b>	NBR	Use for with rubber bumper only.
8	<b>Piston rod B</b>	Stainless steel	056 to 106
		Carbon steel	150 to 250 Hard chrome plated
9	<b>Magnet</b>	—	
10	<b>Piston gasket</b>	NBR	150 and more only
11	<b>Piston seal</b>	NBR	
12	<b>Rod seal</b>	NBR	
13	<b>Tube gasket</b>	NBR	

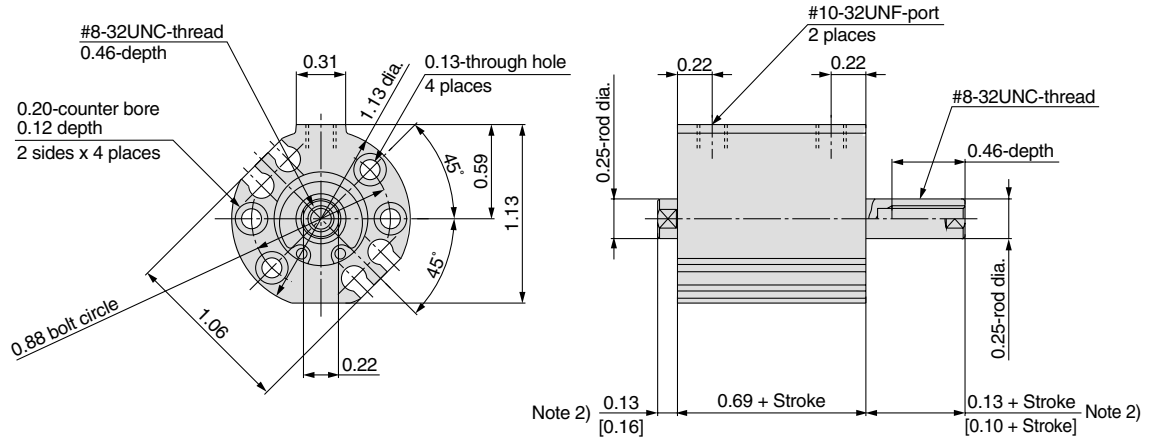
### Repair Parts: Seal Kit for Double Acting, Double Rod

The part number will be the same as the one without auto switches.

# Compact Cylinder Double Acting, Double Rod *Series NCQ8W*

**Dimensions/NCQ8WB056 to 250** (Refer to page 44 for both ends tapped and male thread dimensions.)

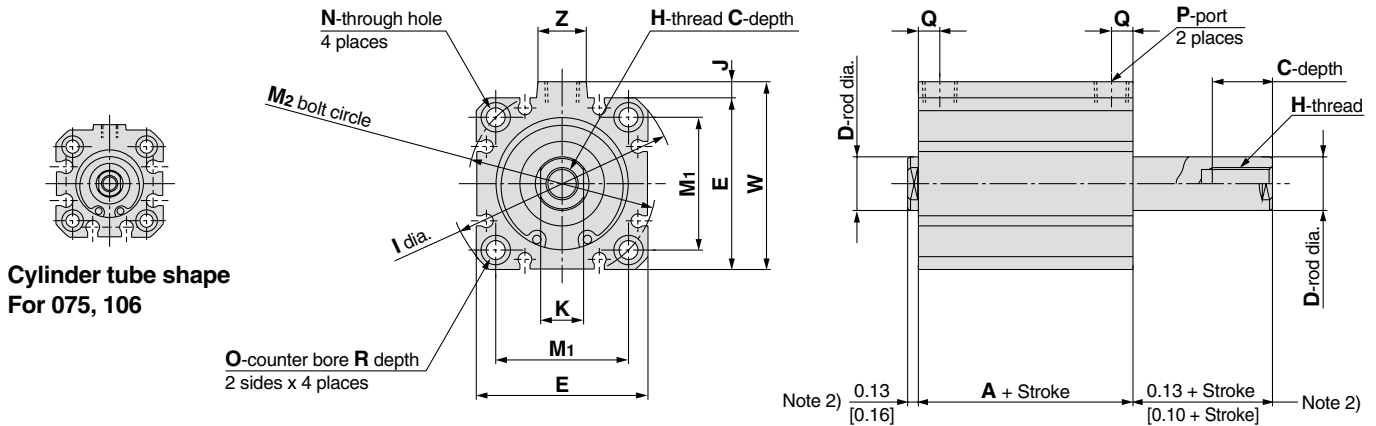
## 056 (9/16")



Note 1) Stroke will be reduced by 0.06" for rubber bumper type.

Note 2) According to the rubber bumper type, projection of piston rods will be [0.16] and [0.10 + STROKE] for sides.

## 056 (3/4"), 106 (1-1/16"), 150 (1-1/2"), 200 (2"), 250 (2-1/2")



**Cylinder tube shape  
For 075, 106**

Symbol	A	C	D	E	H	I	J	K	M <sub>1</sub>	M <sub>2</sub>	N	O	P	Q	R	W	Z
<b>075 (3/4")</b>	0.69	0.46	0.31	1.25	#10-32UNF	1.56	0.06	0.25	0.86	1.22	0.15	0.25	#10-32UNF	0.22	0.15	1.31	0.38
<b>106 (1-1/16")</b>	0.94	0.70	0.50	1.56	5/16-24UNF	2.03	0.16	0.44	1.19	1.69	0.15	0.25	NPT1/8	0.25	0.15	1.72	0.56
<b>150 (1-1/2")</b>	1.00	0.70	0.63	2.00	3/8-24UNF	2.63	0.19	0.50	1.55	2.19	0.22	0.34	NPT1/8	0.25	0.20	2.19	0.56
<b>200 (2")</b>	1.06	0.70	0.75	2.53	1/2-20UNF	3.13	0.20	0.63	1.90	2.69	0.22	0.34	NPT1/8	0.28	0.20	2.73	0.56
<b>250 (2-1/2")</b>	1.31	0.70	0.75	2.84	1/2-20UNF	3.75	0.39	0.63	2.30	3.25	0.28	0.41	NPT1/4	0.33	0.26	3.23	0.69

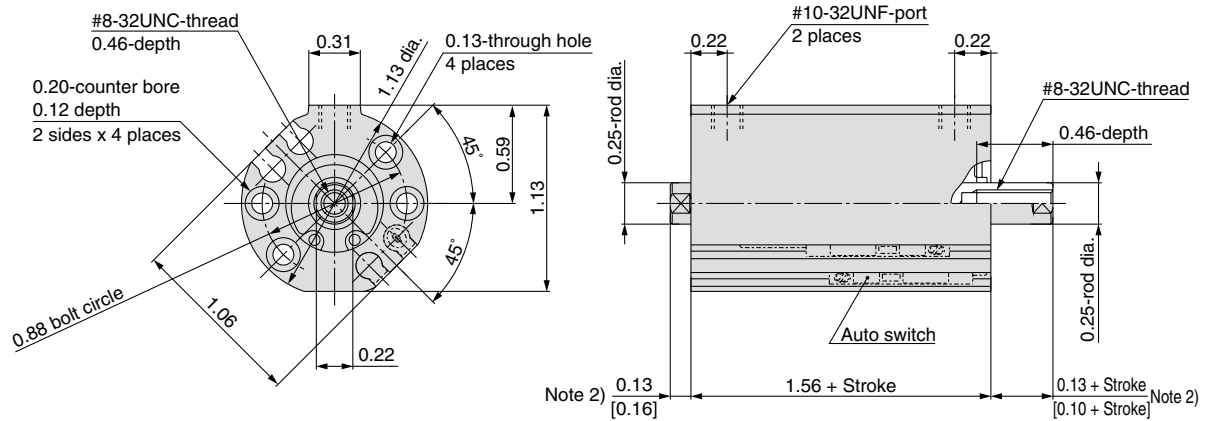
Note 1) Stroke will be reduced by 0.06" for rubber bumper type.

Note 2) According to the rubber bumper type, projection of piston rods will be [0.16] and [0.10 + Stroke] for sides.

# Series NCQ8W

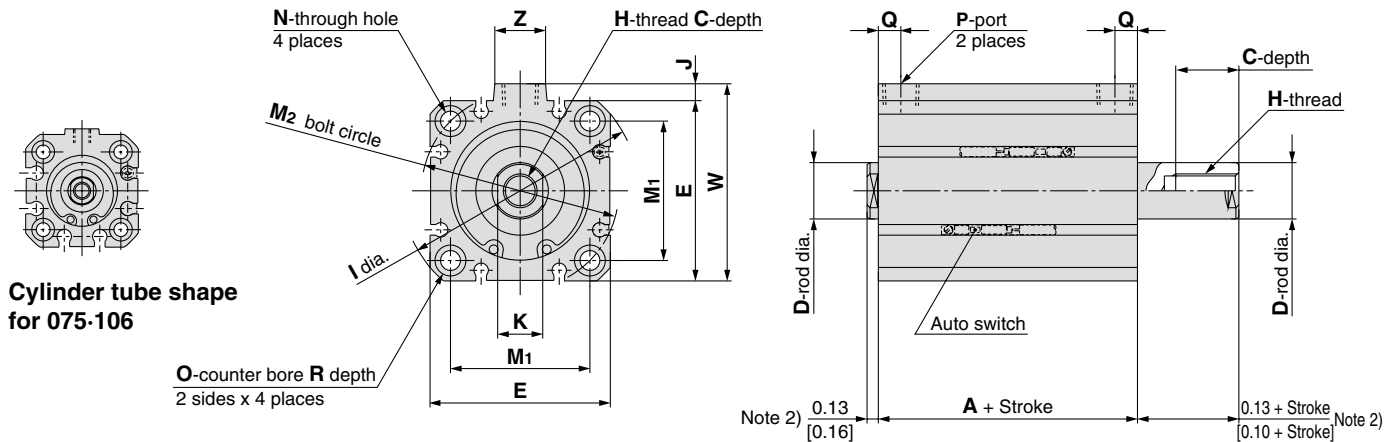
## Dimensions/NCQ8WB056 to 250 (Refer to page 44 for both ends tapped and male thread dimensions.)

### 056 (9/16")



Note 1) Stroke will be reduced by 0.06" for rubber bumper type.  
 Note 2) According to the rubber bumper type, projection of piston rods will be [0.16] and [0.10 + Stroke] for sides.

### 075 (3/4"), 106 (1-1/16"), 150 (1-1/2"), 200 (2"), 250 (2-1/2")



Cylinder tube shape for 075-106

(Inch)																	
Symbol	A	C	D	E	H	I	J	K	M <sub>1</sub>	M <sub>2</sub>	N	O	P	Q	R	W	Z
075 (3/4")	1.56	0.46	0.31	1.25	#10-32UNF	1.56	0.06	0.25	0.86	1.22	0.15	0.25	#10-32UNF	0.22	0.15	1.31	0.38
106 (1-1/16")	1.81	0.70	0.50	1.56	5/16-24UNF	2.03	0.16	0.44	1.19	1.69	0.15	0.25	NPT1/8	0.25	0.15	1.72	0.56
150 (1-1/2")	1.88	0.70	0.63	2.00	3/8-24UNF	2.63	0.19	0.50	1.55	2.19	0.22	0.34	NPT1/8	0.25	0.20	2.19	0.56
200 (2")	1.94	0.70	0.75	2.53	1/2-20UNF	3.13	0.20	0.63	1.90	2.69	0.22	0.34	NPT1/8	0.28	0.20	2.73	0.56
250 (2-1/2")	2.19	0.70	0.75	2.84	1/2-20UNF	3.75	0.39	0.63	2.30	3.25	0.28	0.41	NPT1/4	0.33	0.26	3.23	0.69

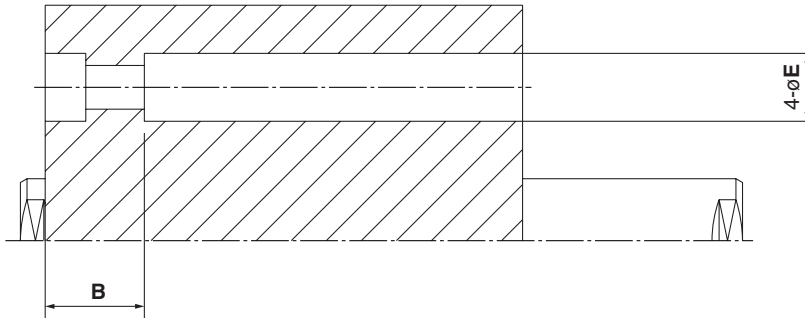
Note 1) Stroke will be reduced by 0.06" for rubber bumper type.  
 Note 2) According to the rubber bumper type, projection of piston rods will be [0.16] and [0.10 + Stroke] for sides.



# Compact Cylinder Double Acting, Double Rod *Series NCQ8W*

## Dimensions/NC(D)Q8W□

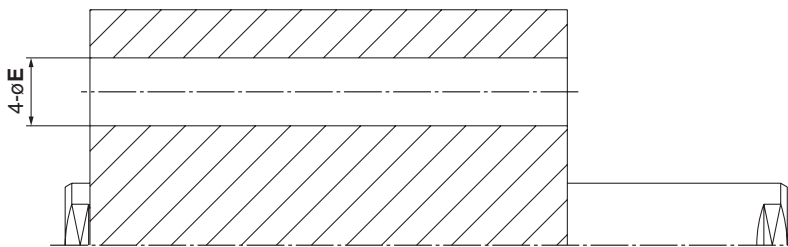
### Front screw clearance hole / NC(D)Q8WE



(Inch)

Symbol	B	E
Bore		
<b>056 (9/16")</b>	0.34	0.20
<b>075 (3/4")</b>	0.34	0.25
<b>106 (1-1/16")</b>	0.50	0.25
<b>150 (1-1/2")</b>	0.50	0.34
<b>200 (2")</b>	0.53	0.34
<b>250 (2-1/2")</b>	0.66	0.41

### Through screw clearance hole / NC(D)Q8WN



(Inch)

Symbol	E
Bore	
<b>056 (9/16")</b>	0.20
<b>075 (3/4")</b>	0.25
<b>106 (1-1/16")</b>	0.25
<b>150 (1-1/2")</b>	0.34
<b>200 (2")</b>	0.34
<b>250 (2-1/2")</b>	0.41