

Electric Actuator

High Performance

SliderType/ High Precision Type

Battery-less Absolute (Step Motor 24 VDC)

Reduces cycle time

New


Cycle time

Reduced by 39% (0.37 s \triangleleft 0.61 s)
 compared with the existing model*1

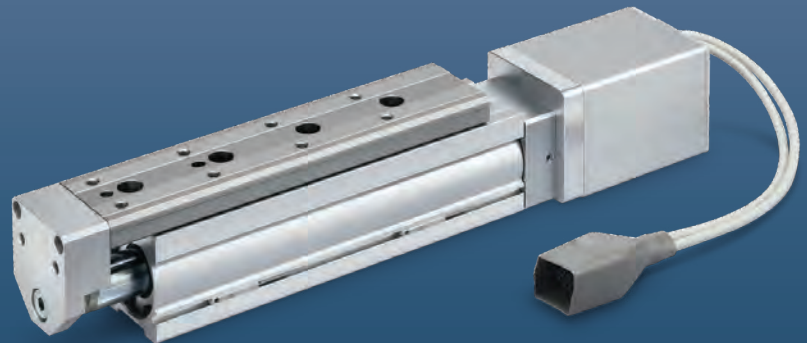
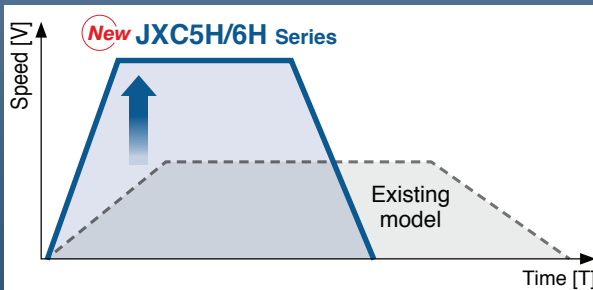
*1 When LESYH25DGA-150 is operated from 0 to 150 mm

**Acceleration/
 Deceleration**

10000 mm/s²
 (200% increase compared with the existing model)

Max. speed

800 mm/s
 (Improved by 200% compared with the existing model)



Improved positioning repeatability due to the adoption of a ball screw drive.

Positioning repeatability ± 0.01 mm

Lost motion **0.1 mm or less**

Battery-less absolute encoder compatible

High Performance Step Motor Controller

Higher acceleration and maximum speed can be set with the special controller.

Parallel I/O
JXC5H/6H Series p. 33



EtherCAT/EtherNet/IP™/
 PROFINET

JXCEH/9H/PH Series p. 40



Battery-less Absolute Encoder Type Restart from the last stop position is possible after recovery of the power supply.

The position information is held by the encoder even when the power supply is turned off. A return to origin operation is not necessary when the power supply is recovered.

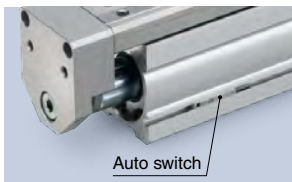


Auto switches are mountable.

Mounting groove for auto switches

For checking the limit and the intermediate signal
Applicable to the D-M9□, D-M9□E, and D-M9□W (2-color indicator)

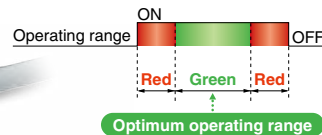
* The auto switches should be ordered separately. For details, refer to pages 25 to 27.



2-color indicator solid state auto switch

Accurate setting of the mounting position can be performed without mistakes.

A light lights up when within the optimum operating range.



Maintenance labor can be reduced as the product does not require the use of batteries.

Batteries are not required to store the position information. Therefore, there is no need to store spare batteries or to recycle and replace dead batteries.



Does not contain a battery

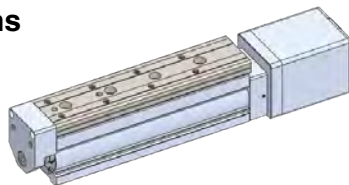


Contains a battery

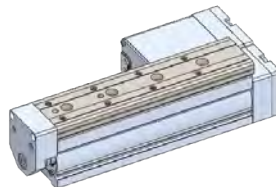
Motor mounting position

Select from 3 directions

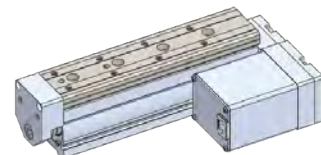
In-line



Right side parallel

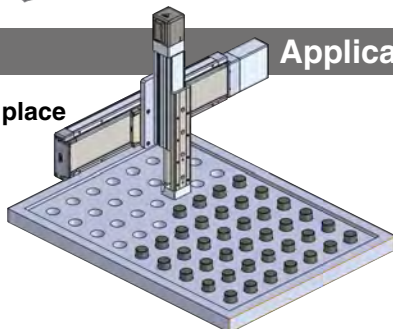


Left side parallel

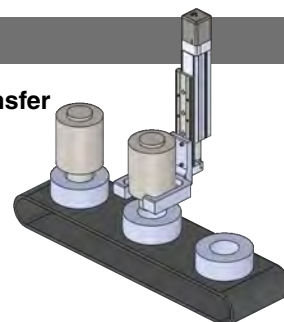


Application examples

• For pick and place operations



• For vertical transfer (Z axis)





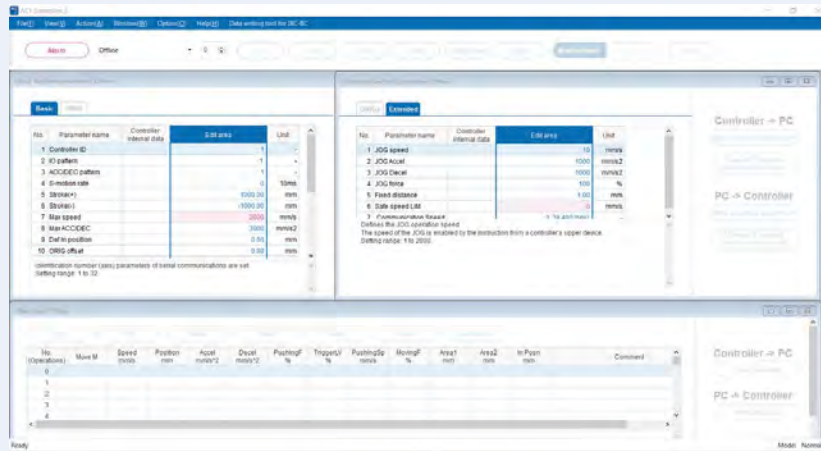
Step Data Input Type JXC5H/6H Series p. 33

ACT 2 Controller Setting Software ACT Controller 2

Easy-to-use setting software ACT Controller 2 (For PC)

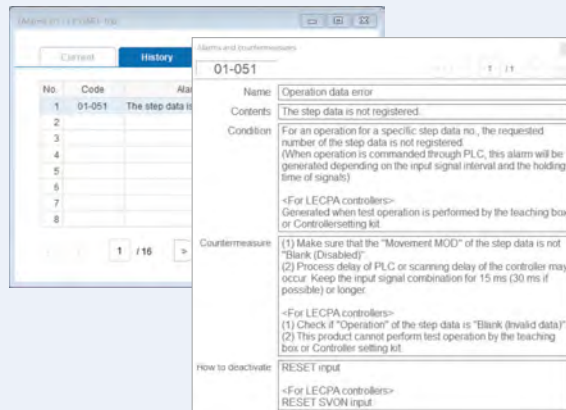
Various functions available in normal mode (Compared with the existing ACT Controller)

- Parameter and step data setting

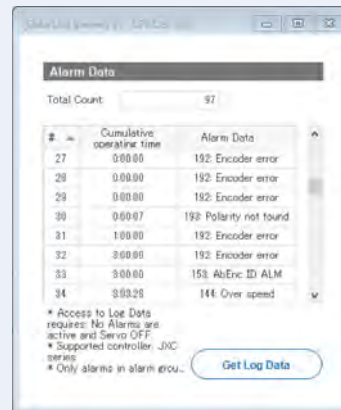


* Customers operating computers with specifications other than Windows 10/64 bit should use the existing ACT Controller.

- Alarm confirmation

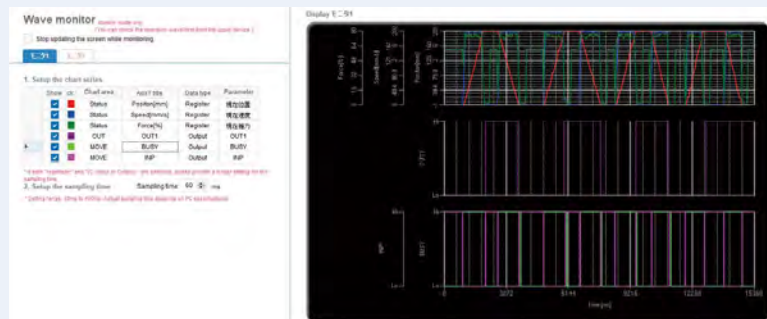


When an alarm is generated, the alarm details and countermeasures can be confirmed.



When an alarm is generated, the cumulative startup time of the controller can be confirmed.

- Waveform monitoring



The position, speed, force, and input/output signals' waveform data during operation can be measured.

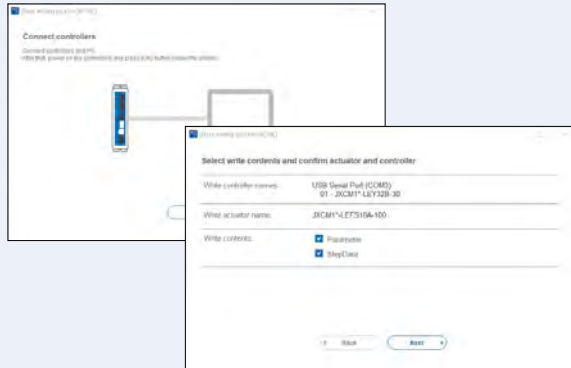
* When using the ACT Controller 2 test operation function, waveform monitoring is not available.

Step Data Input Type JXC5H/6H Series p. 33



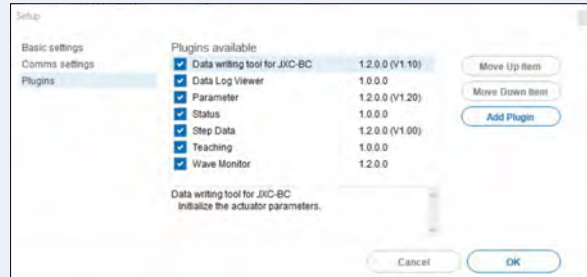
ACT 2 Controller Setting Software ACT Controller 2

• The JXC-BC writing tool



The writing tool can be used to write the connected actuator's parameters and step data to a JXC series blank controller.

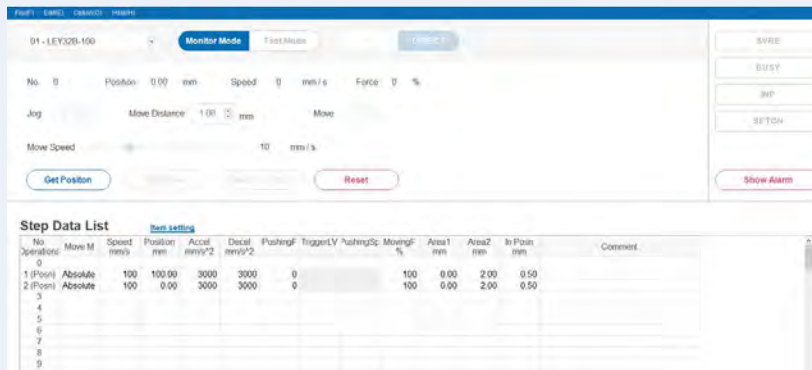
• Customizable plug-in functions



Which plug-in functions are displayed as well as the display order are customizable. Customers can add the functions they require.

In normal mode, various other test operation methods (program operation, jogging, moving of the constant rate, etc.), signal status monitoring, one-touch switching between Japanese and English, and other functions are available.

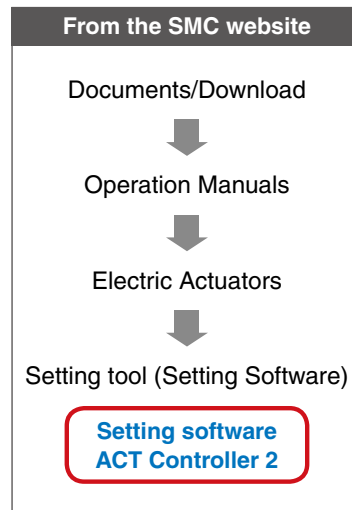
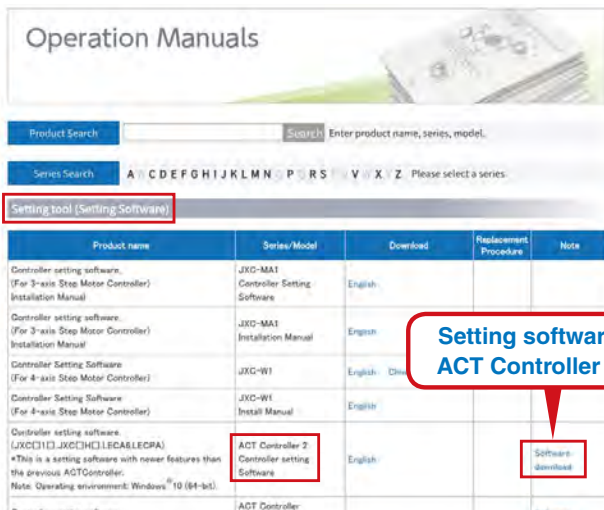
For immediate use, operate in easy mode.



Step data setting, various test operations, and status confirmation can be done on a single screen.

How to download the setting software

[Click here for details.](#)



Step Data Input Type JXC5H/6H Series



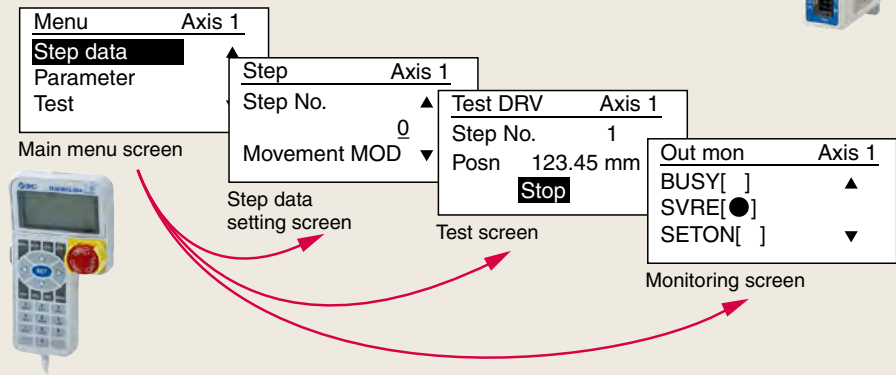
Teaching Box

◎ Normal Mode

- Multiple step data can be stored in the teaching box and transferred to the controller.
- Continuous test drive by up to 5 step data

Teaching box screen

- Each function (step data setting, test drive, monitoring, etc.) can be selected from the main menu.

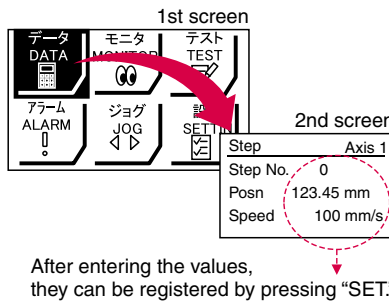


◎ Easy Mode

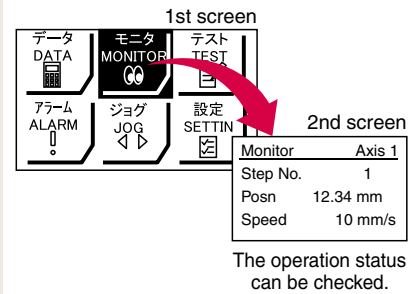
- The simple screen without scrolling promotes ease of setting and operation.
- Choose an icon from the first screen to select a function.
- Set the step data and check the monitor on the second screen.



Example of setting the step data



Example of checking the operation status



Teaching box screen

- Data can be set by inputting only the position and speed. (Other conditions are preset.)

Step	Axis 1
Step No.	0
Posn	50.00 mm
Speed	200 mm/s



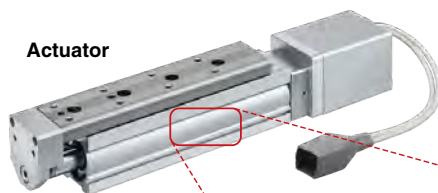
Step	Axis 1
Step No.	1
Posn	80.00 mm
Speed	100 mm/s

The actuator and controller are provided as a set. (They can be ordered separately as well.)

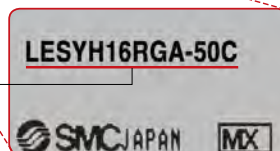
Confirm that the combination of the controller and actuator is correct.

<Check the following before use.>

- ① Check the actuator label for the model number. This number should match that of the controller.
- ② Check that the Parallel I/O configuration matches (NPN or PNP).



①



①

②

Function

Item	Step data input type JXC5H/6H
Step data and parameter setting	<ul style="list-style-type: none"> Input from controller setting software (PC) Input from teaching box
Step data "position" setting	<ul style="list-style-type: none"> Numerical value input from controller setting software (PC) or teaching box Input numerical value Direct teaching JOG teaching
Number of step data	64 points
Operation command (I/O signal)	Step No. [IN [*]] input ⇒ [DRIVE] input
Completion signal	[INP] output

Setting Items

TB: Teaching box PC: Controller setting software

Item	Contents	Easy Mode		Normal Mode	Step data input type JXC5H/6H	
		TB	PC	TB/PC		
Step data setting (Excerpt)	Movement MOD	Selection of "absolute position" and "relative position"	△	●	●	Set at ABS/INC
	Speed	Transfer speed	●	●	●	Set in units of 1 mm/s
	Position	[Position]: Target position [Pushing]: Pushing start position	●	●	●	Set in units of 0.01 mm
	Acceleration/Deceleration	Acceleration/deceleration during movement	●	●	●	Set in units of 1 mm/s ²
	Pushing force	Rate of force during pushing operation	●	●	●	Set in units of 1%
	Trigger LV	Target force during pushing operation	△	●	●	Set in units of 1%
	Pushing speed	Speed during pushing operation	△	●	●	Set in units of 1 mm/s
	Moving force	Force during positioning operation	△	●	●	Set to 100%
	Area output	Conditions for area output signal to turn ON	△	●	●	Set in units of 0.01 mm
	In position	[Position]: Width to the target position [Pushing]: How much it moves during pushing	△	●	●	Set to 0.5 mm or more (Units: 0.01 mm)
Parameter setting (Excerpt)	Stroke (+)	+ side position limit	×	×	●	Set in units of 0.01 mm
	Stroke (-)	- side position limit	×	×	●	Set in units of 0.01 mm
	ORIG direction	Direction of the return to origin can be set.	×	×	●	Compatible
	ORIG speed	Speed during return to origin	×	×	●	Set in units of 1 mm/s
	ORIG ACC	Acceleration during return to origin	×	×	●	Set in units of 1 mm/s ²
Test	JOG		●	●	●	Continuous operation at the set speed can be tested while the switch is being pressed.
	MOVE		×	●	●	Operation at the set distance and speed from the current position can be tested.
	Return to ORIG		●	●	●	Compatible
	Test drive	Operation of the specified step data	●	●	● (Continuous operation)	Compatible
	Forced output	ON/OFF of the output terminal can be tested.	×	×	●	Compatible
Monitor	DRV mon	Current position, speed, force, and the specified step data can be monitored.	●	●	●	Compatible
	In/Out mon	Current ON/OFF status of the input and output terminal can be monitored.	×	×	●	Compatible
ALM	Status	Alarm currently being generated can be confirmed.	●	●	●	Compatible
	ALM Log record	Alarms generated in the past can be confirmed.	×	×	●	Compatible
File	Save/Load	Step data and parameters can be saved, forwarded, and deleted.	×	×	●	Compatible
Other	Language	Can be changed to Japanese or English	●	●	●	Compatible

△: Can be set from TB Ver. 2.** (The version information is displayed on the initial screen.)

Fieldbus Network

EtherCAT/EtherNet/IP™/PROFINET Direct Input Type Step Motor Controller/JXC□ Series p. 40

Ether**CAT**®



EtherNet/IP™



PROFI**NET**®



○ **Two types of operation command**

Step no. defined operation: Operate using the preset step data in the controller.

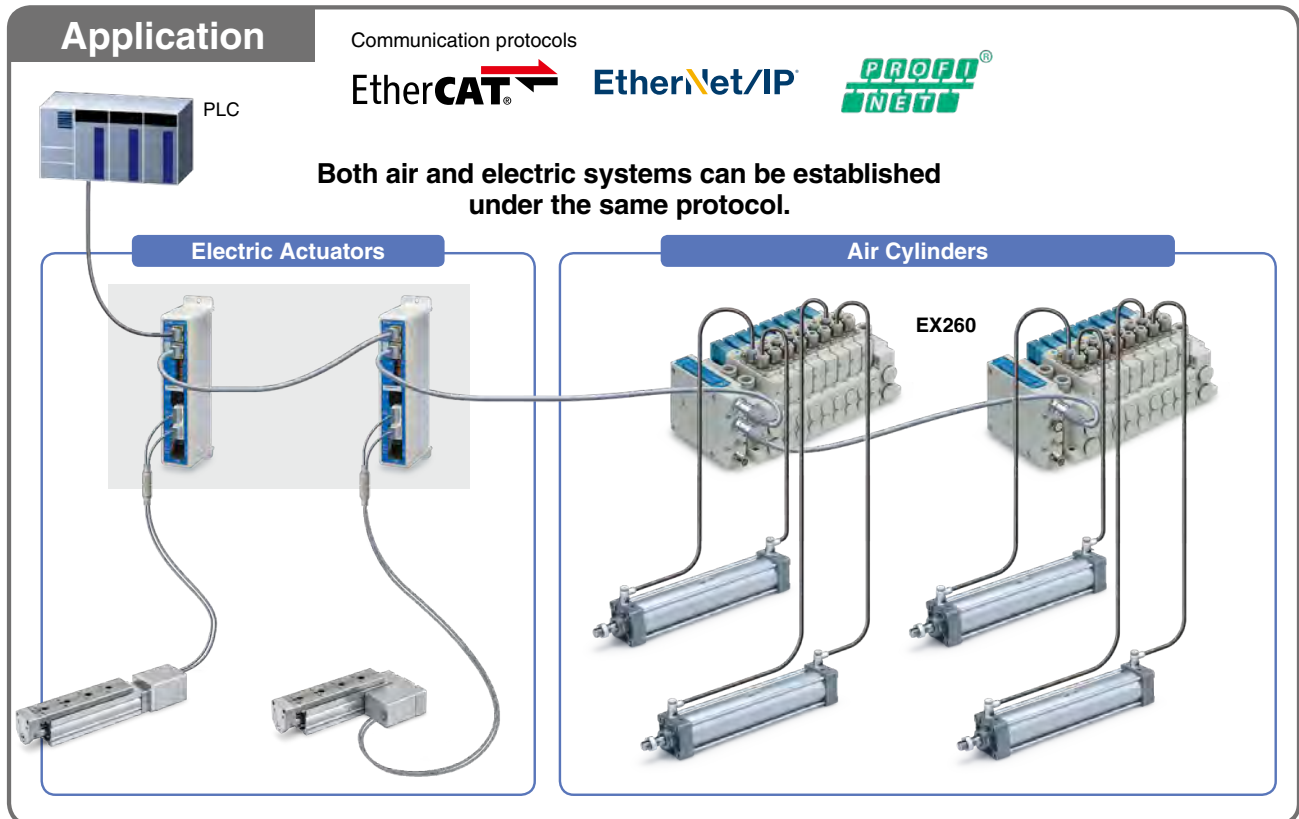
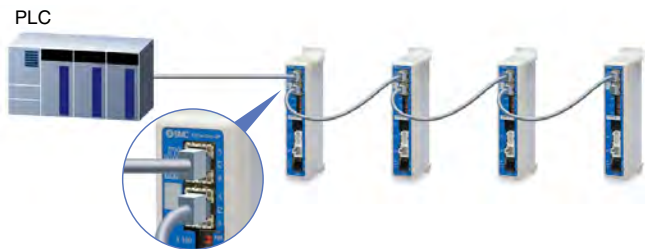
Numerical data defined operation: The actuator operates using values such as position and speed from the PLC.

○ **Numerical monitoring available**

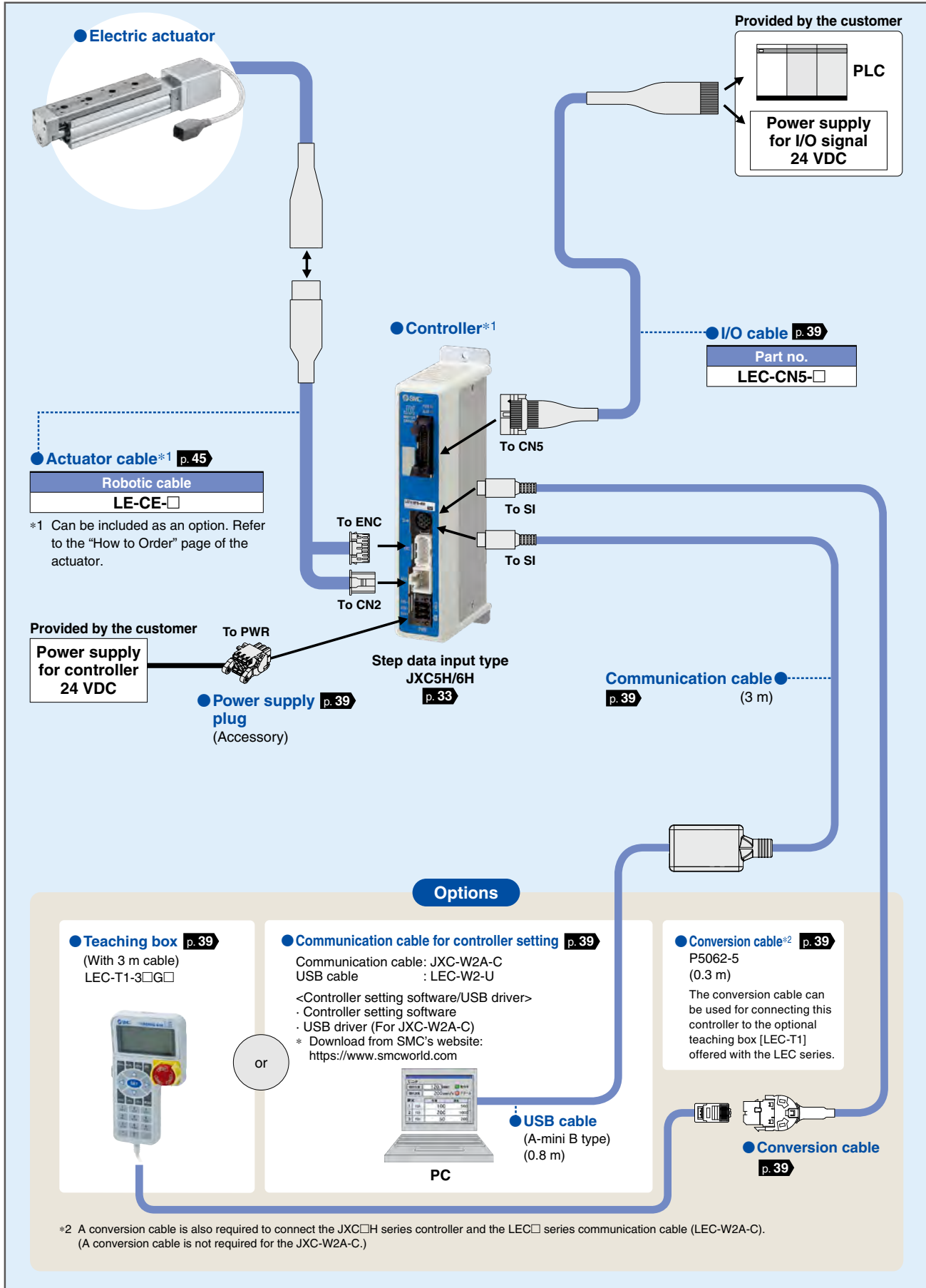
Numerical information, such as the current speed, current position, and alarm codes, can be monitored on the PLC.

○ **Transition wiring of communication cables**

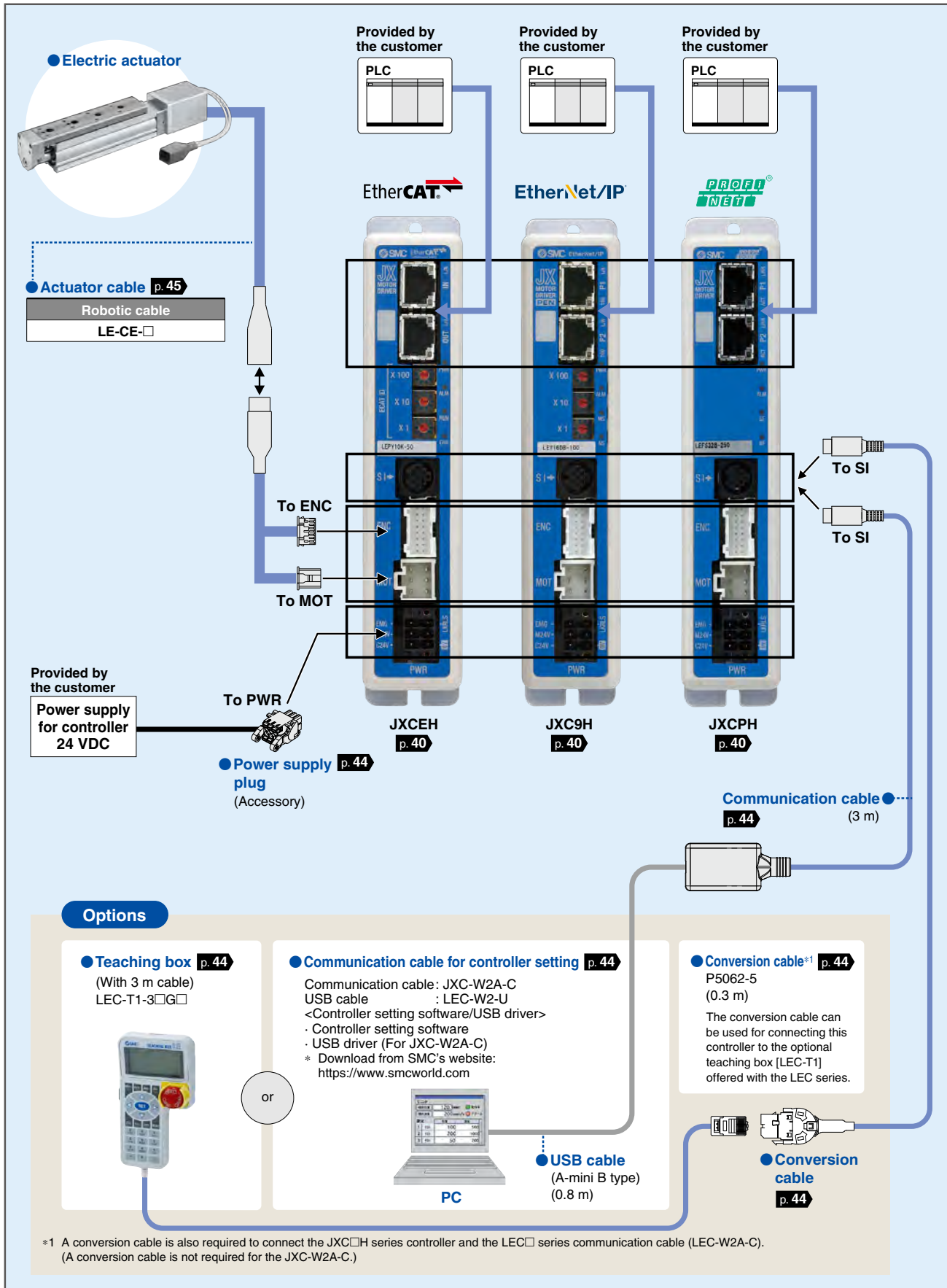
Two communication ports are provided.



System Construction/General Purpose I/O



System Construction/Fieldbus Network (EtherCAT/EtherNet/IP™/PROFINET Direct Input Type)

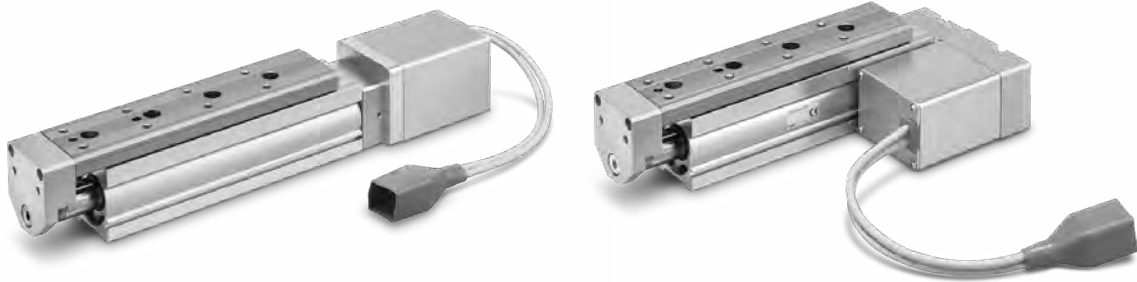


Electric Actuator

High Performance Slide Table/High Precision Type

Slide Table/High Precision Type *LESYH□G Series*

Battery-less Absolute (Step Motor 24 VDC)



Pages refer to full catalog. Scan to view.

High Performance Slide Table/High Precision Type *LESYH□G Series* p. 8

Battery-less Absolute (Step Motor 24 VDC)



Model Selection	p. 9
How to Order	p. 17
Specifications	p. 19
Construction	p. 20
Dimensions	p. 21
Auto Switch Mounting	p. 24
Specific Product Precautions	p. 28

Controllers *JXC□ Series* p. 32

High Performance Controller (Step Data Input Type) *JXC5H/6H Series* Battery-less Absolute (Step Motor 24 VDC)



How to Order	p. 33
Specifications	p. 33
Dimensions	p. 35
Options	p. 39
Actuator Cable	p. 45

High Performance Step Motor Controller *JXCEH/9H/PH Series* Battery-less Absolute (Step Motor 24 VDC)



How to Order	p. 40
Specifications	p. 41
Dimensions	p. 42
Options	p. 44
Actuator Cable	p. 45

Battery-less Absolute Encoder Type Specific Product Precautions	p. 46
CE/UKCA/UL-compliance List	p. 47

Specific Product Precautions

JXCEH/9H/PH Series

JXC5H/6H Series

Auto Switch

LESYH□G Series

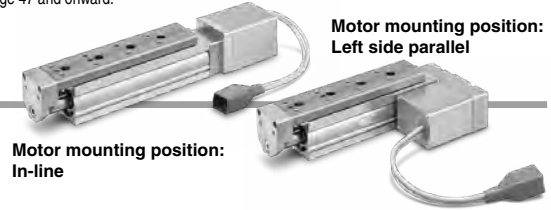
Model Selection

High Performance Slide Table/ High Precision Type LESYH□G Series



* For details, refer to page 47 and onward.

How to Order



LESYH **16** **D** **G** **A** - **50** **C** - **R1** **C5H73**

①
②
③
④
⑤
⑥
⑦
⑧

For details on controllers, refer to the next page.

① Size

8
16
25

② Motor mounting position/Motor cover direction (For size 8)

Symbol	Motor mounting position	Motor cover direction
D1	In-line	Left side
D2		Right side
D3		Top side
D4		Bottom side
R	Right side parallel	—
L	Left side parallel	—

② Motor mounting position (For sizes 16 and 25)

D	In-line
R	Right side parallel
L	Left side parallel

③ Motor type

Symbol	Type	Compatible controllers
G	High performance (Battery-less absolute)	JXC5H JXC6H JXCEH JXC9H JXCPH

④ Lead [mm]

	Size		
	8	16	25
A	10	12	16
B	5	6	8
C	2.5	—	—

⑤ Stroke [mm]

	Size		
	8	16	25
50	●	●	●
75	●	—	—
100	—	●	●
150	—	—	●

⑥ Motor option

C	Without lock
W	With lock

⑦ Connector/Actuator cable type/length

Robotic cable			
	Without cable		[m]
Nil		R8	8*1
R1	1.5	RA	10*1
R3	3	RB	15*1
R5	5	RC	20*1

⑧ Controller

Nil	Without controller
C□H□□	With controller

C □ H 7 3

Interface (Communication protocol/Input/Output)

5	Parallel input (NPN)
6	Parallel input (PNP)
E	EtherCAT
9	EtherNet/IP™
P	PROFINET

Mounting

7	Screw mounting
8*2	DIN rail

Number of axes/Special specification

H	1 axis/High performance type
---	------------------------------

I/O cable

Symbol	Type	Applicable interface
Nil	Without accessory	—
1	I/O cable (1.5 m)	Parallel input (NPN) Parallel input (PNP)
3	I/O cable (3 m)	
5	I/O cable (5 m)	

*1 Produced upon receipt of order

*2 The DIN rail is not included. It must be ordered separately.

For details on auto switches, refer to pages 24 to 27.



Automation - Controls - Process



Leading global pneumatics and industrial automation components manufacturer dedicated to sustainable factory automation.

Serving the industries of semiconductor, food & packaging, life science, automotive, machine tool, process, natural resource, and general needs for automation, controls, and process.

Global Presence

- 532 Sales Offices in 83 Countries
- Production Facilities in 29 Countries & Regions
- Technical Centers in Japan, the U.S., Europe, & China

Extensive Product Line

- 12,000 Basic Models with over 700,00 Variations
 - Actuators
 - Sensors & Switches
 - Connectors
 - Process Gas
 - Electrical Products
 - Temperature Control
 - Vacuum
 - Valves
 - Air Preparation
 - Static Control
 - Chemical Handling
 - Specialty Products

North American Support

- 30 North American Locations
- Configure, Validate, & Download 3D & 2D Models from www.smcusa.com/products
- 2.6 Million sqft North American Headquarters of Engineering, Production, Central Distribution & Administration

Sales Offices

WEST

- Austin
- Dallas
- Denver
- El Paso
- Los Angeles
- Phoenix
- Portland
- San Jose

CANADA

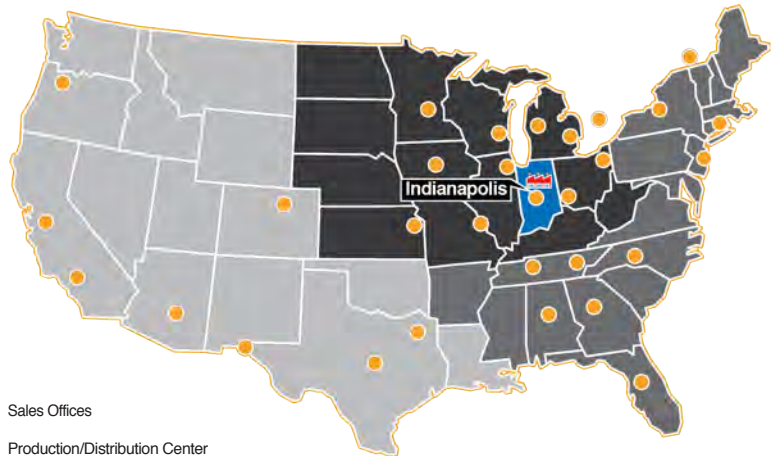
- Montreal
- Toronto

CENTRAL

- Chicago
- Cincinnati
- Cleveland
- Detroit
- Des Moines
- Grand Rapids
- Indianapolis
- Kansas City
- Milwaukee
- Minneapolis
- St. Louis

EAST

- Atlanta
- Birmingham
- Boston
- Charlotte
- Knoxville
- Nashville
- New Jersey
- Rochester
- Tampa



● Sales Offices
 Production/Distribution Center



© 2023 SMC Corporation of America. All Rights Reserved.
 All reasonable efforts to ensure the accuracy of the information detailed in this catalog were made at the time of publishing. However, SMC can in no way warrant the information herein contained as specifications are subject to change without notice.

BP RRD 2.5M

Scan to view full catalog

