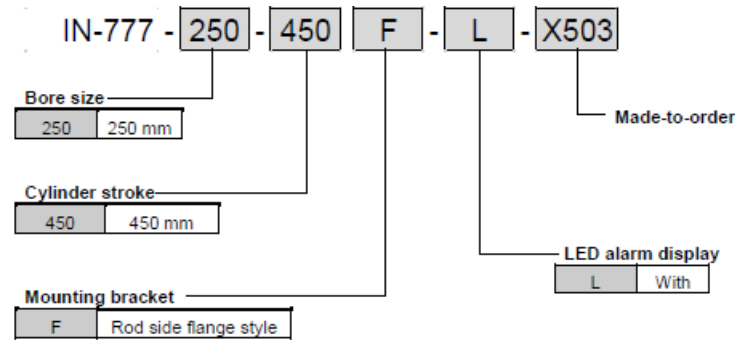


## Variation

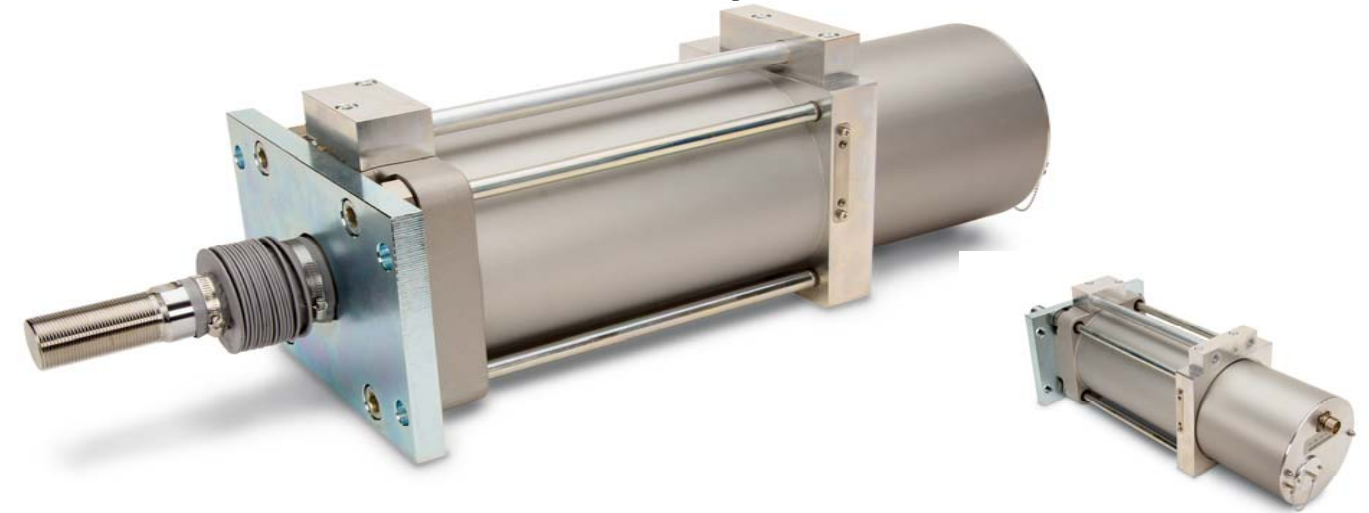
Bore size (mm)	Cylinder stroke (mm)							
	120	200	250	300	350	450	530	660
125	○		○					
160		○		○				
200		○		○				
250					○	○		
320		○			○		○	
400								○

### How to Order



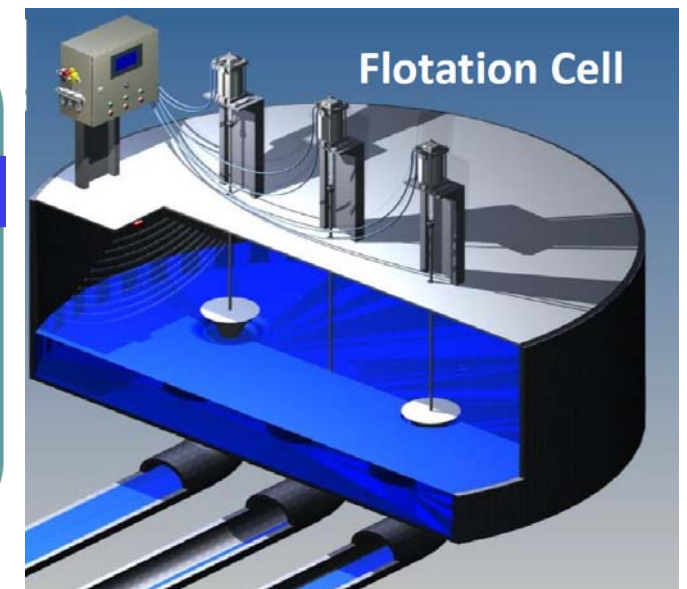
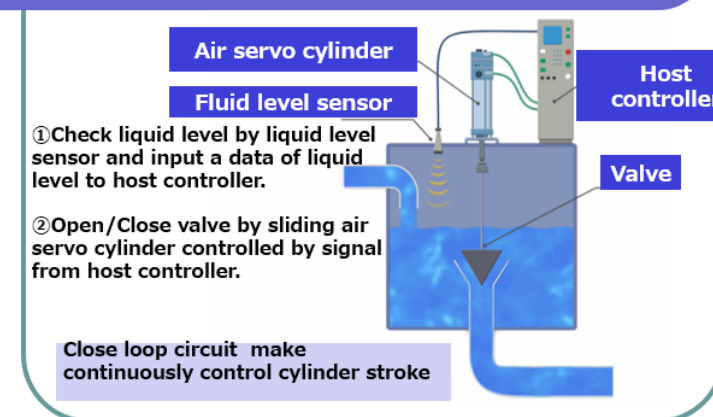
## Series IN-777

### Air Servo Control Cylinder with Feedback



Provides fast response and high precision repeatability

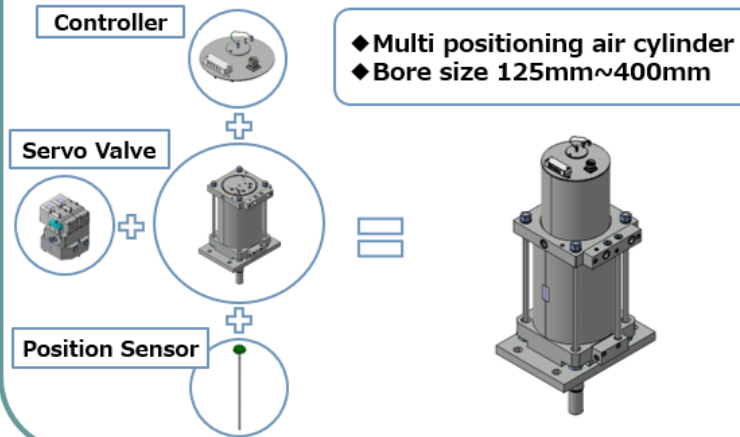
### Application: Liquid level control by opening and closing valve.



SMC Corporation of America  
10100 SMC Blvd., Noblesville, IN 46060  
(800) SMC-SMC1 (762-7621)

www.smcusa.com  
email: sales@smcusa.com  
For International Inquiries:  
www.smcworld.com

## Product Summary : Features



## Series IN-777

## Series IN-777

## Environmental resistance

### IP67

Ambient/fluid temperature :  
-20°C~60°C

### Bellows

### Position sensor

\* Built in cylinder

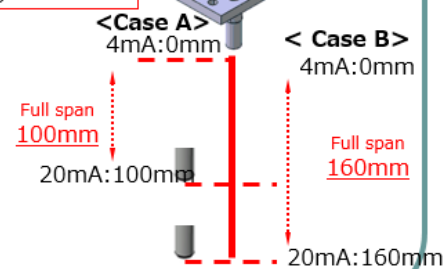
Without external link mechanism

Picture : Cylinder with positioner

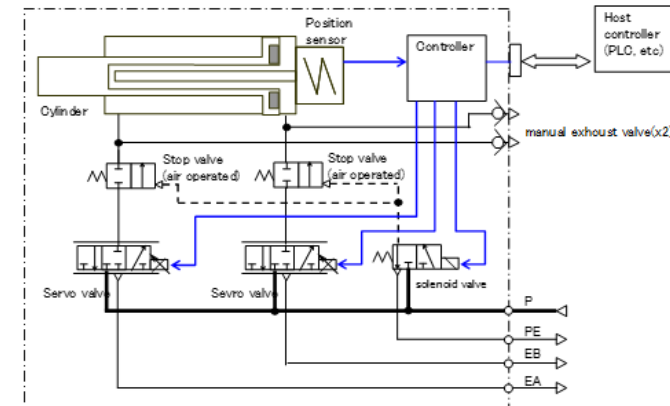
## Setting

- ◆ function which make the range of piston rod moving (SET-POINT) range of positioning
- ◆ SET-POINT is memorized even though turn power supply off
- ◆ Setting is ready just by input signal

Two setting ways  
1. JOG motion  
2. Auto calibration



## Basic information: Circuit diagram



## Specification

\* Tested in SMC condition

	Item	Specification
Electricity	Supply voltage	24 VDC +/-10%
	Input range	4~20mA
	Output Range	4~20mA
	I/F Connector	M23 (Circular waterproof connector)
	Position sensor	Absolute
General	Repeatability <sup>+</sup>	± 0.5mm
	Protective structure	IP67
	Maximum supply pressure	0.8MPa
	Minimum supply pressure	0.55MPa
	Proof pressure	1.2MPa
	Fluid temperature	-20~60°C
	Ambient temperature	-20~60°C
	Humidity	35~85% RH (Non-condensing)
	Height	0~5,000m
	Mounting method and dimensions	Flanges-Bolt fastening. Based on ISO 15552

## Feature①: Fast responsiveness and high precision repeatability

