

! Contact our sales office for delivery dates and prices as this is a special model.

Specialized Product

Point to Group
P.G. information

Water Separator **Element-less specification**

AF20/30/40-□□□-□-A-X2729

Features

The element-less specification eliminates the need for replacement.



Water droplets are removed by centrifugal force.

Water droplet removal ratio: **99%**
At rated flow
(Based on SMC's measuring conditions)

Air containing water droplets is rotated to remove them by centrifugal force.



Better environmental resistance with 2-layer construction

The bowl is covered with a transparent bowl guard!

* Body size 30 or more

Instead of windows on the bowl guard, the inner bowl is covered with a polycarbonate transparent bowl guard. Now, even if the environment changes and the bowl is exposed to corrosive chemical or oil splash, the foreign matter will not stick directly to the pressurized bowl. This reduces the risk of bowl breakage.

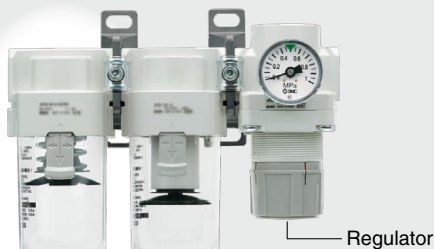


Inner bowl

Transparent bowl guard

Material: Polycarbonate

Connectable to modular F.R.L. units



Water Separator Air Filter

Regulator

Products do not come assembled. They should be ordered separately and assembled by the customer.

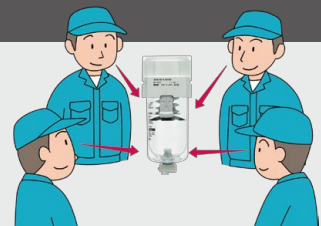
Simple Specials System

Units with an F.R.L. are available through the simple special ordering system. The lead time is almost the same as the standard product.

Please contact your local sales representative for more details.

Superior visibility

The status inside the bowl can be checked from all directions.



Application example

Protection of pneumatic equipment in a machine tool



Machine tool



Caution

To ensure the safest possible operation of this product, please be sure to thoroughly read the "Safety Instructions" in our "Best Pneumatics" catalog before use.

SMC Corporation 4-14-1, SOTO-KANDA, CHIYODA-KU, TOKYO 101-0021, JAPAN URL: <http://www.smcworld.com>

©2017 SMC Corporation All Rights Reserved



SP163X-008E
P: VR

Specifications

Model	AF20-A-X2729	AF30-A-X2729	AF40-A-X2729	AF40-06-A-X2729
Port size	1/8, 1/4	1/4, 3/8	1/4, 3/8, 1/2	3/4
Fluid	Air			
Proof pressure	1.5 MPa			
Max. operating pressure	1.0 MPa			
Ambient and fluid temperatures	-5 to 60°C (No freezing)			
Water droplet removal ratio *1	99%			
Drain capacity [cm ³]	8	25	45	45
Rated flow [L/min (ANR)] *2	600	1400	2000	2000

- *1 This shows the water droplet removal ratio at the rated flow rate under SMC's measuring conditions. This product can remove water droplets, but cannot remove other moisture content (water vapor). If the flow rate is less than the rated flow rate, the water droplet removal ratio will decrease.
 *2 P1 = 0.7 MPa pressure. Be aware that when a fluid flows at a flow rate exceeding the rated flow rate, the accumulated condensate may be pulled up and may flow out to the outlet side.
 * This product cannot remove any oil content or solid foreign objects.

How to Order

Symbol: When more than one specification is required, indicate in alphanumeric order.

AF **30** - **02** **BD** - **A** - X2729

Body size

20	Body size 20
30	Body size 30
40	Body size 40

Pipe thread type

Nil	Rc
N *1	NPT
F *2	G

Port size

Symbol	Port size	Body size		
		20	30	40
01	1/8	●	—	—
02	1/4	●	●	●
03	3/8	—	●	●
04	1/2	—	—	●
06	3/4	—	—	●

Bowl

Symbol	Bowl	Body size		
		20	30	40
Nil	Polycarbonate bowl	●	●	●
2	Metal bowl	●	●	●
6	Nylon bowl	●	●	●
8	Metal bowl with level gauge	—	●	●
C	With bowl guard	●	—*6	—*6
6C	With bowl guard (Nylon bowl)	●	—*7	—*7

+ Drain port*8

Nil	With drain cock	●	●	●
J *9	Drain guide 1/8	●	—	—
	Drain guide 1/4	—	●	●
W *10	Drain cock with barb fitting	—	●	●

Flow direction

Nil	Flow direction: Left to right	●	●	●
R	Flow direction: Right to left	●	●	●

+

Pressure unit

Nil	Name plate and caution plate for bowl in SI units: MPa	●	●	●
Z *11	Name plate and caution plate for bowl in imperial units: psi, °F	○*12	○*12	○*12

Mounting

Nil	Without mounting option	●	●	●
B *3	With bracket	●	●	●

+

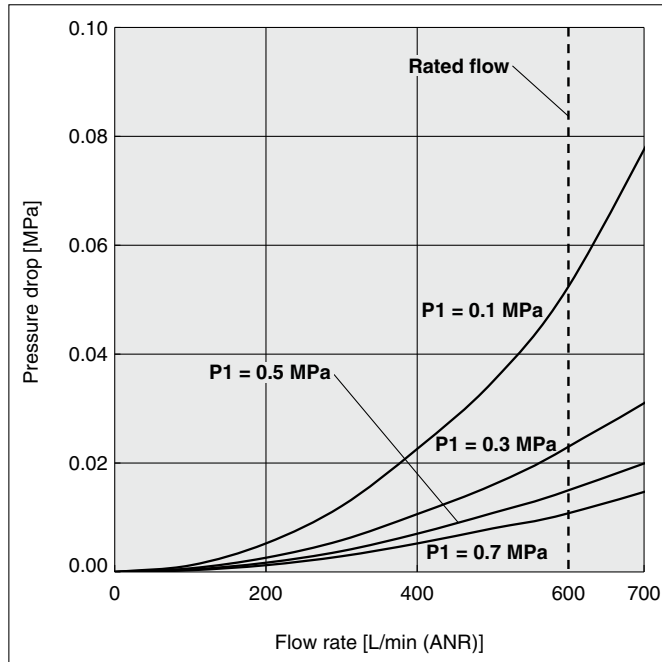
Float type auto drain

Nil	Without auto drain	●	●	●
C *4	N.C. (Normally closed) Drain port is closed when pressure is not applied.	●	●	●
D *5	N.O. (Normally open) Drain port is open when pressure is not applied.	—	●	●

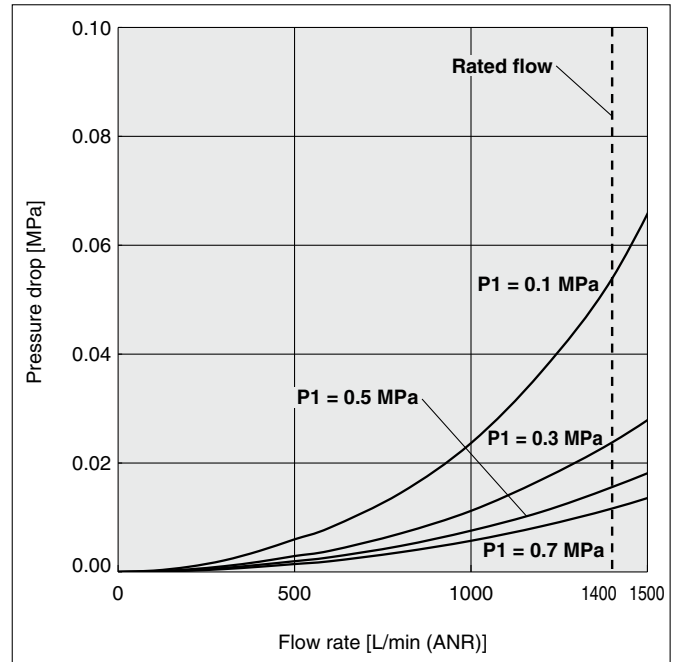
- *1 Drain guide is an NPT thread. The auto drain port comes with a ø3/8" One-touch fitting (applicable to the AF30-A-X2729 and AF40-A-X2729).
 *2 Drain guide is a G thread. The auto drain port comes with a ø10 One-touch fitting (applicable to the AF30-A-X2729 and AF40-A-X2729).
 *3 Option B is not assembled and supplied loose at the time of shipment. Assembly consists of a bracket and 2 mounting screws.
 *4 When pressure is not applied, condensate which does not start the auto drain mechanism will be left in the bowl. Releasing the residual condensate before ending operations for the day is recommended.
 *5 If the compressor is small (0.75 kW, discharge flow is less than 100 L/min [ANR]), air leakage from the drain cock may occur during the start of operations. The N.C. type is recommended.
 *6 A bowl guard is provided as standard equipment (polycarbonate).
 *7 A bowl guard is provided as standard equipment (nylon).
 *8 The combination of float type auto drain C and D is not available.
 *9 Without a valve function
 *10 The combination of bowl 2 and 8 is not available.
 *11 For pipe thread type: NPT
 This product is for overseas use only according to the New Measurement Act. (The SI unit type is provided for use in Japan.)
 *12 ○: For pipe thread type: NPT only

Flow Rate Characteristics (Representative values)

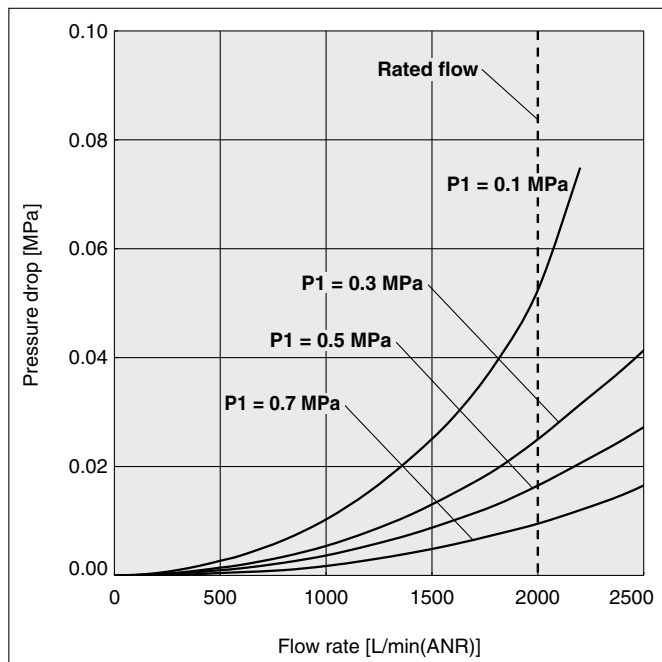
AF20-02-A-X2729



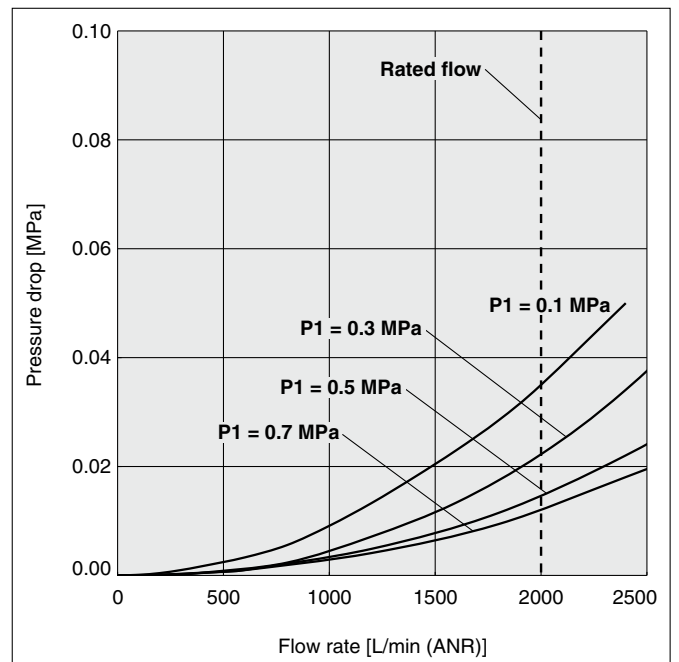
AF30-03-A-X2729



AF40-04-A-X2729

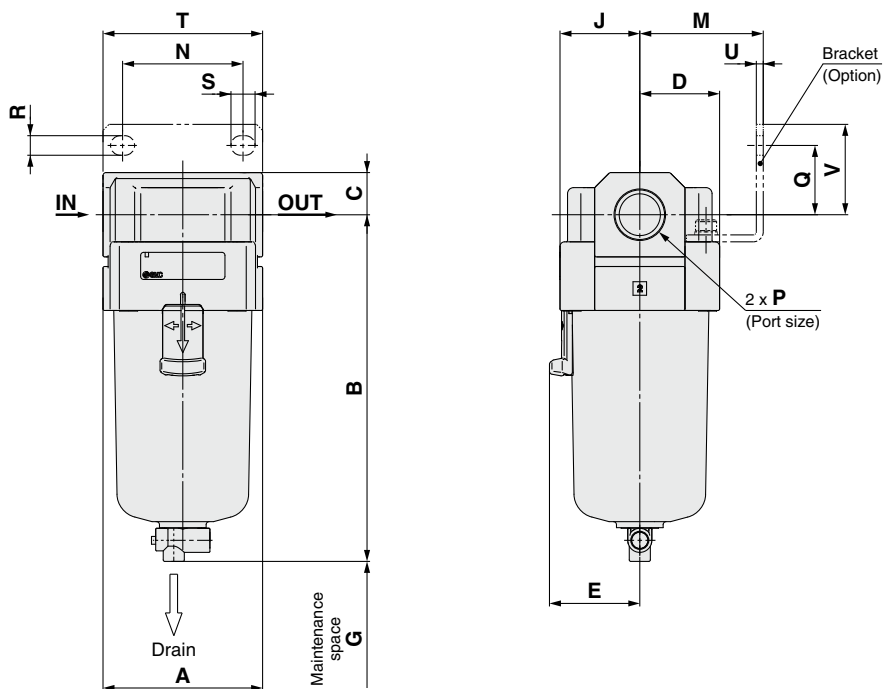


AF40-06-A-X2729



Dimensions

[mm]



Model	AF20-A-X2729				AF30 to 40-A-X2729
Option Semi-standard specifications	With auto drain (N.C.)	Metal bowl	With drain guide	Metal bowl with drain guide	With auto drain (N.O./N.C.)
Dimensions					

Model	AF30 to 40-A-X2729					
Option Semi-standard specifications	Metal bowl	Metal bowl with drain guide	Metal bowl with level gauge	Metal bowl with level gauge, with drain guide	With drain guide	Drain cock with barb fitting
Dimensions						

Model	P	A	B	C	D	E	G	J
AF20-A-X2729	1/8, 1/4	40	87.6	9.8	20	—	25	20
AF30-A-X2729	1/4, 3/8	53	115.1	14	26.7	30	35	26.7
AF40-A-X2729	1/4, 3/8, 1/2	70	147.1	18	35.5	38.4	40	35.5
AF40-06-A-X2729	3/4	75	149.1	20	35.5	38.4	40	35.5

Model	Bracket mount								With auto drain	With barb fitting	With drain guide	Metal bowl	Metal bowl with drain guide	Metal bowl with level gauge	Metal bowl with level gauge, with drain guide
	M	N	Q	R	S	T	U	V	B	B	B	B	B	B	B
AF20-A-X2729	30	27	22	5.4	8.4	40	2.3	28	104.9	—	91.4	87.4	93.9	—	—
AF30-A-X2729	41	35	23	6.5	13	53	2.3	30	156.8	123.6	121.9	117.6	122.1	137.6	142.1
AF40-A-X2729	50	52	26	8.5	12.5	70	2.3	35	186.9	155.6	153.9	149.6	154.1	169.6	174.1
AF40-06-A-X2729	50	52	25	8.5	12.5	70	2.3	34	188.9	157.6	155.9	151.6	156.1	171.6	176.1