

MODEL SK927

COMPRESSOR SERVICE KIT

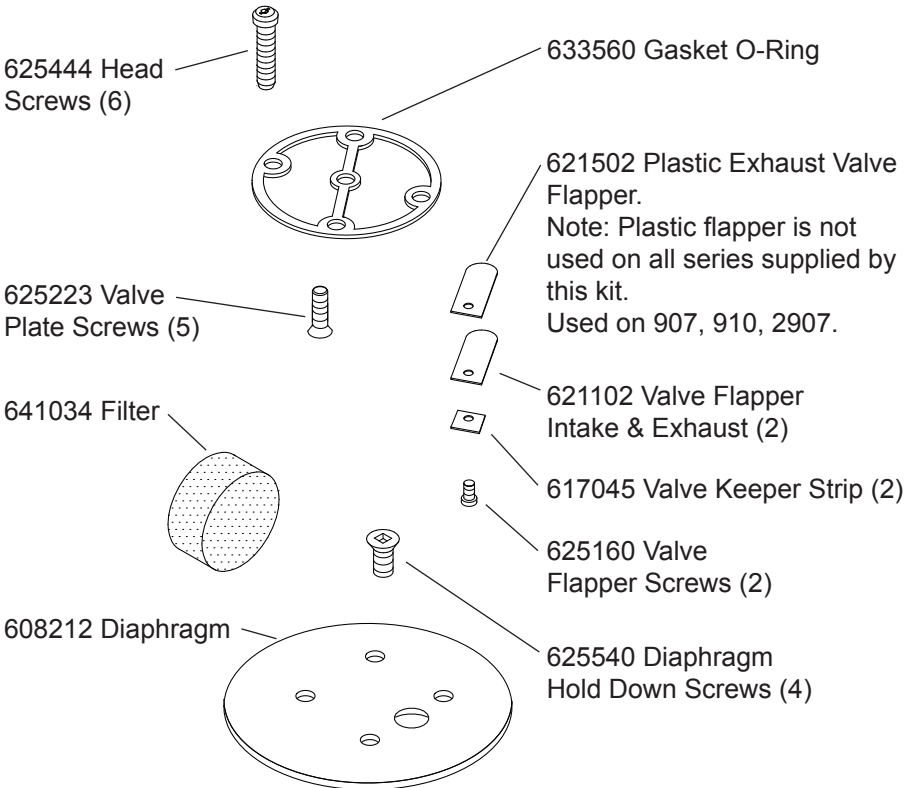
For service to 907, 910, 2907, 917, 927 Series
Compressors

⚠ CAUTION: Improper assembly or use of damaged parts may lead to premature failure. To avoid frequent repairs follow these assembly procedures.

NOTE: Before you begin read these instructions thoroughly. Assemble the necessary tools. You will need a flat tip and phillips head screw driver as well as a T-20 and T-25 Hex driver for a torque wrench.

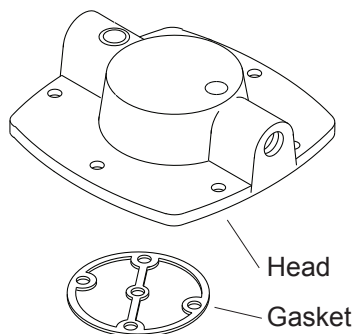
⚠ WARNING: Unplug the compressor before beginning disassembly.

ALWAYS NOTE POSITION AND ORIENTATION OF PARTS AS REMOVED TO ASSURE CORRECT POSITIONING WHEN REASSEMBLING.

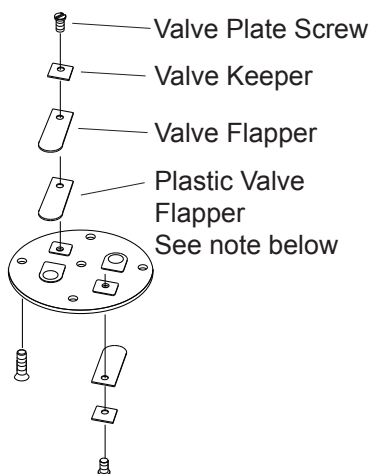


INTAKE & EXHAUST VALVE REPLACEMENT

1. Remove 4 head screws and head. Discard screws. Turn head over. Remove 4 screws from valve plate. Discard screws. Remove valve plate from head. NOTE: If valve plate needs to be pried out of head cavity, be careful that the intake hole seat area does not get damaged. If damage should occur the valve plate will need to be replaced.



2. Remove and discard gasket.
3. Remove screw, flapper and keeper from top side of valve plate, discard. Wipe valve plate and head with a soft clean cloth. Reassemble new flapper and keeper with new screw. Torque to 12 inlbs. Make sure the end of the flapper covers the intake hole and that the keeper is aligned properly. Turn valve plate over and repeat procedure on exhaust flapper.



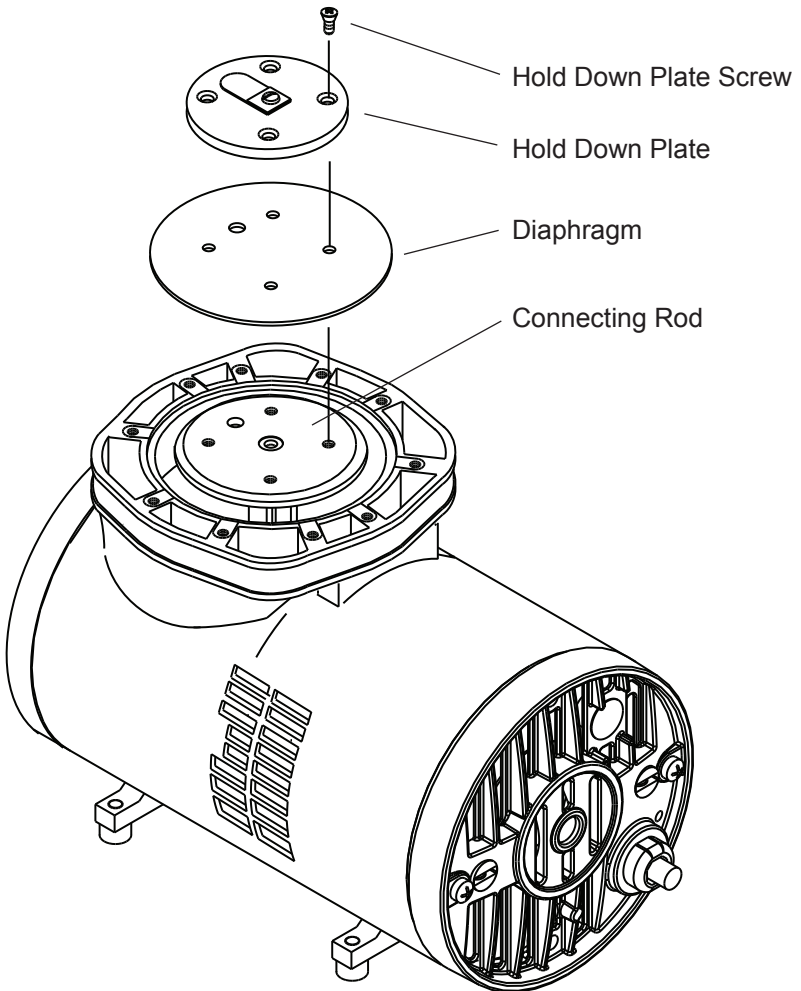
Note: Pay close attention to components when disassembling exhaust valve porting. Some units will have a plastic valve flapper under the steel valve flapper.

Disregard the note If your unit does not have a plastic valve flapper.

4. Wipe inside of head with a clean soft cloth, be sure to remove any excess gasket. Install new gasket.
5. Replace valve plate in head (See Fig). Insert 4 new screws. Torque valve plate screws to 40 inlbs.
6. Replace head. Torque screws to 48 inlbs. in a criss-cross pattern.

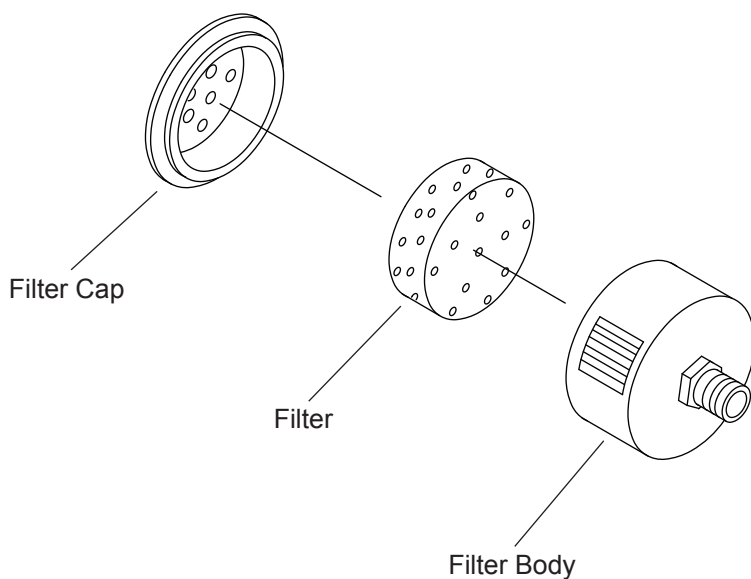
DIAPHRAGM REPLACEMENT

1. Remove head.
2. Remove four screws from hold down plate. Discard screws.
3. Remove hold down plate, diaphragm and diaphragm liner (if present) from connecting rod top. Wipe connecting rod top and hold down plate with a clean soft cloth.
4. Center new diaphragm and hold down plate over connecting rod holes. Make sure all holes align as shown in the illustration below and that the diaphragm is centered in the well of the housing. Insert four new screws. Torque screws to 20 inlbs. in criss-cross pattern.
5. Replace head and valve plate assembly. Torque screws to 40 inlbs. in a criss-cross pattern.



FILTER REPLACEMENT

1. Remove filter cap.
2. Remove old filter and discard.
3. Wipe inside of filter body and cap with a clean soft cloth.
4. Place new filter inside of filter body.
5. Replace cap.



THOMAS

A Gardner Denver Product

1419 Illinois Avenue

Sheboygan, Wisconsin 53081 USA

(920) 457-4891 www.gd-thomas.com