

Air line equipment

P1H, PTH Filter/Regulator- Lubricator Combination Units

07 Series

Compact design

Filter removes liquids and solid particles down to 5 µm

Push to lock adjusting knob with tamper resistant option

Micro-Fog lubricator provides air line lubrication to one or more air driven tools or other devices

Nearly constant oil density output with varying air flow

Can be disassembled without the use of tools or removal from the air line

Technical data

Fluid:

Compressed air

Maximum pressure

Transparent bowl: 150 psig (10 bar)

Metal bowl: 250 psig (17 bar)

Operating temperature*

Transparent bowl: 0° to 125°F (-20° to 50°C)

Metal bowl: 0° to 150°F (-20° to 65°C)

* Air supply must be dry enough to avoid ice formation at temperatures below 35°F (2°C)

Typical flow at 100 psig (7 bar) inlet pressure, 90 psig (6.3 bar) set pressure and a droop of 15 psig (1 bar) from set:

1/8" ports: T.B.A.

1/4" ports: 6 scfm (3 dm³/s)

Drain connection:

1/8" pipe

Filter/Regulator

Particle removal:

5 µm or 40 µm. Within ISO 8573-1, Class 3 and Class 5

Gauge ports:

1/8" PTF with PTF main ports

1/8" ISO Rc with ISO Rc main ports

1/8" ISO Rc with ISO G main ports

Automatic drain operation:

Spitter type drain operates momentarily when a rapid change in air flow occurs or when the supply pressure is reduced.

Lubricator

Start point (i.e., minimum flow required for lubricator operation): 0.5 scfm (0.24 dm³/s) at 90 psig (6.3 bar) inlet pressure

Nominal bowl capacity:

1 fluid ounce (31 ml)



Ordering Information

Models listed include PTF threads, transparent bowls, filter/regulator with relieving diaphragm, automatic drain, 5 µm element, 5 to 100 psig (0.3 to 7 bar) outlet pressure adjustment range*, gauge, and lubricator with auto drain.

Port Size	Model Number	Weight lbs (kg)
1/8"	PTH-100-A1AA	0.87 (40)
1/4"	PTH-200-A1AA	0.87 (40)

* Outlet pressure can be adjusted to pressures in excess of, and less than, those specified. Do not use these units to control pressures outside of the specified ranges.

Materials

Bodies: Zinc

Filter/Regulator bonnet: Acetal

Filter/Regulator valve seat: Acetal

Bowls

Transparent: Polycarbonate

Metal: Zinc

Lubricator sight-feed dome: Transparent nylon

Filter element: Sintered polypropylene

Elastomers: Nitrile

ALE-82

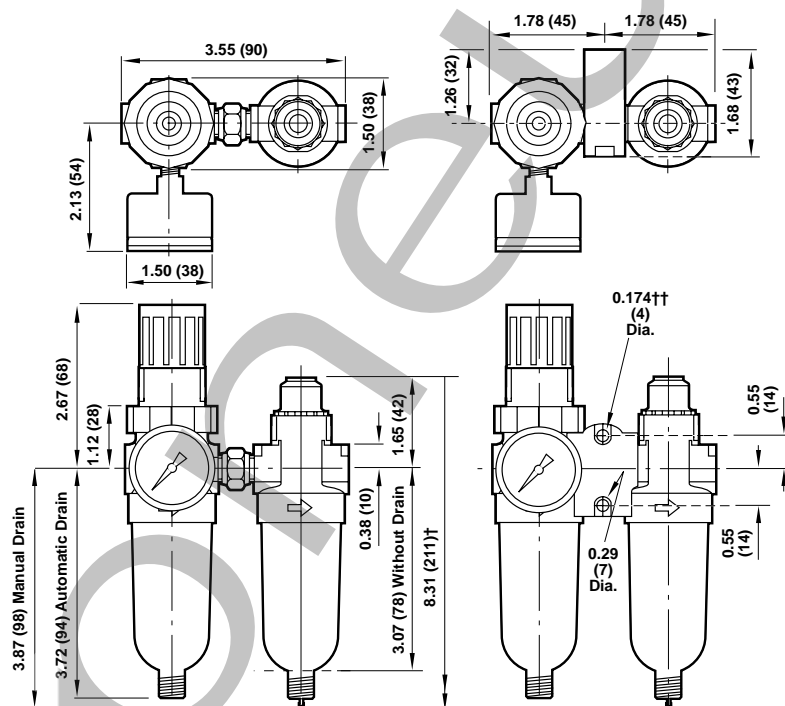
P1H, PTH Filter/Regulator-Lubricator Combination Units

07 Series

Alternative Models

Integral Wall Bracket		Substitute	Threads		Substitute			
Without (P1H Combination Unit)	1		PTF	A				
With (PTH Combination Unit)	T		ISO G parallel	G				
Port Size		Substitute	Lubricator Reservoir		Substitute			
1/8"	1		Transparent with drain	A				
1/4"	2		Transparent without drain	Q				
			Metal with drain	M				
			Metal without drain	F				
Filter/Regulator Bowl		Outlet Pressure Adjustment Range*	Relief Type	Gauge	Substitute	Filter/Regulator Element		Substitute
Transparent	5 to 100	0.3 to 7	Relieving	With	00	5 µm	1	
Transparent	5 to 100	0.3 to 7	Relieving	Without	01	40 µm	3	
Transparent	5 to 100	0.3 to 7	Non-relieving	Without	02			
Transparent	5 to 100	0.3 to 7	Non-relieving	With	03			
Transparent	5 to 50	0.3 to 3.5	Relieving	Without	04			
Transparent	5 to 50	0.3 to 3.5	Relieving	With	05			
Transparent	5 to 50	0.3 to 3.5	Non-relieving	Without	06			
Transparent	5 to 50	0.3 to 3.5	Non-relieving	With	07			
Metal / no sight glass	5 to 100	0.3 to 7	Relieving	With	40			
Metal / no sight glass	5 to 100	0.3 to 7	Relieving	Without	41			
Metal / no sight glass	5 to 100	0.3 to 7	Non-relieving	Without	42			
Metal / no sight glass	5 to 100	0.3 to 7	Non-relieving	With	43			
Metal / no sight glass	5 to 50	0.3 to 3.5	Relieving	Without	44			
Metal / no sight glass	5 to 50	0.3 to 3.5	Relieving	With	45			
Metal / no sight glass	5 to 50	0.3 to 3.5	Non-relieving	Without	46			
Metal / no sight glass	5 to 50	0.3 to 3.5	Non-relieving	With	47			

* Outlet pressure can be adjusted to pressures in excess of, and less than, those specified. Do not use these units to control pressures outside of the specified ranges.



† Minimum distance required to remove bowl
 †† Mounting holes

All Dimensions in Inches (mm)

Service Kits

Item	Type	Part number
Service kits, filter/regulator	relieving, 5 µm element	3820-02
Service kit, lubricator	non relieving, 5 µm element	3820-01
Replacement drains	Manual	3795-03
	Automatic	773-03
	Automatic	3654-02
Replacement wall bracket for PTH unit	Integral 2 piece	6700-30

Filter/regulator service kit contains slip ring, diaphragm, valve seat with o-ring, valve, valve spring, element, element gasket, and bowl o-ring.

Lubricator service kit contains sight-feed dome seal, cartridge o-ring, and bowl o-ring.

ALE-83

P1A Filter-Regulator-Lubricator Combination Units

07 Series

Compact design

Filter removes liquids and solid particles down to 5 µm

Push to lock adjusting knob with tamper resistant option

Micro-Fog lubricator provides air line lubrication to one or more air driven tools or other devices

Nearly constant oil density output with varying air flow

Can be disassembled without the use of tools or removal from the air line

Technical data

Fluid:

Compressed air

Maximum pressure

Transparent bowl:

150 psig (10 bar)

Metal bowl:

250 psig (17 bar)

Operating temperature*

Transparent bowl: 0° to 125°F (-20° to 50°C)

Metal bowl: 0° to 150°F (-20° to 65°C)

* Air supply must be dry enough to avoid ice formation at temperatures below 35°F (2°C)

Drain connection:

Will fit 1/8-27 and 1/8-28 pipe thread

Filter

1/8" ISO Rc with ISO G main ports

Partical removal:

5 µm or 40 µm. Within ISO 8573-1, Class 3 and Class 5

Automatic drain operation:

Spitter type drain operates momentarily when a rapid change in air flow occurs or when the supply pressure is reduced.

Regulator

Recommended regulating pressure ranges†:

5 to 100 psig (0.3 to 7 bar) standard

5 to 50 psig (0.3 to 3.5 bar) optional

† Outlet pressures can be adjusted to pressures in excess of, and less than those specified. Do not use these units to control pressures outside of the specified ranges.

Gauge ports:

1/8" PTF with PTF main ports

1/8" ISO Rc with ISO Rc main ports

Ordering Information

Models listed include PTF threads, transparent bowls, filter with automatic drain, 5 µm element; regulator with relieving diaphragm, 5 to 100 psig (0.3 to 7 bar) outlet pressure adjustment range*, gauge; lubricator with manual drain.

Port Size	Model Numbers	Weight lbs (kg)
1/8"	P1A-100-A1AA	1.17 (0.53)
1/4"	P1A-200-A1AA	1.17 (0.53)

* Outlet pressure can be adjusted to pressures in excess of, and less than, those specified. Do not use these units to control pressures outside of the specified ranges.

Lubricator

Start point (i.e. minimum flow required for lubricator operation): 0.5 scfm (0.24 dm³/s) at 90 psig (6.3 bar) inlet pressure

Nominal bowl size:

1 fluid ounce (31 ml)

Materials

Bodies: Zinc

Filter/Regulator bonnet: Acetal

Filter/Regulator valve seat: Acetal

Bowls

Transparent: Polycarbonate

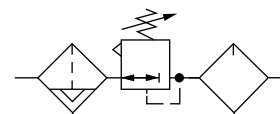
Metal: Zinc

Lubricator sight-feed dome: Transparent nylon

Filter element: Sintered polypropylene

Elastomers: Nitrile

ISO Symbols



Filter with automatic drain, relieving regulator, lubricator with manual drain.

P1A Filter-Regulator-Lubricator Combination Units

07 Series

Alternative Models

P 1 A - ★ ★ ★ - ★ ★ ★ ★

Port Size	Substitute
1/8"	1
1/4"	2

Threads	Substitute
PTF	A
ISO G parallel	G

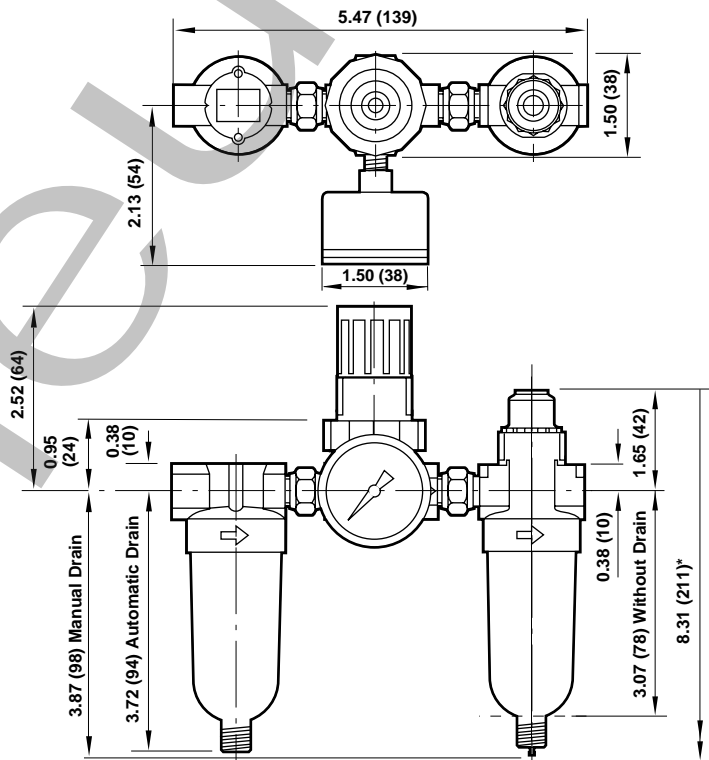
Filter Bowl	Outlet Pressure Adjustment Range*		Relief Type	Gauge	Substitute
	psig	bar			
Transparent	5 to 100	0.3 to 7	Relieving	With	00
Transparent	5 to 100	0.3 to 7	Relieving	Without	01
Transparent	5 to 100	0.3 to 7	Non-relieving	Without	02
Transparent	5 to 100	0.3 to 7	Non-relieving	With	03
Transparent	5 to 50	0.3 to 3.5	Relieving	Without	04
Transparent	5 to 50	0.3 to 3.5	Relieving	With	05
Transparent	5 to 50	0.3 to 3.5	Non-relieving	Without	06
Transparent	5 to 50	0.3 to 3.5	Non-relieving	With	07
Metal / no sight glass	5 to 100	0.3 to 7	Relieving	With	40
Metal / no sight glass	5 to 100	0.3 to 7	Relieving	Without	41
Metal / no sight glass	5 to 100	0.3 to 7	Non-relieving	Without	42
Metal / no sight glass	5 to 100	0.3 to 7	Non-relieving	With	43
Metal / no sight glass	5 to 50	0.3 to 3.5	Relieving	Without	44
Metal / no sight glass	5 to 50	0.3 to 3.5	Relieving	With	45
Metal / no sight glass	5 to 50	0.3 to 3.5	Non-relieving	Without	46
Metal / no sight glass	5 to 50	0.3 to 3.5	Non-relieving	With	47

Lubricator Reservoir	Substitute
Transparent with drain	A
Transparent without drain	Q
Metal with drain	M
Metal without drain	F

Filter Element	Substitute
5 µm	1
100 µm	5

Filter Drain	Substitute
Automatic	A
Manual	M

* Outlet pressure can be adjusted to pressures in excess of, and less than, those specified. Do not use these units to control pressures outside of the specified ranges.



* Minimum clearance to remove bowl.
Dimensions in inches (mm)

ALE-85

Air line equipment

Filter-Regulator-Lubricator Combination Units

P8A, P8B



Depth type, 40 µm filter element
Balanced regulator valve minimizes effect of changes in inlet pressure on outlet pressure

Low torque, non-rising regulator pressure adjusting knob

All around (360°) visibility of the lubricator sight-feed dome simplifies installation and adjustment

Lubricator flow sensor provides a nearly constant oil/air ratio over a wide range of air flows

Use Micro-Fog combinations in applications containing one or more points of lubrication

Use Oil-Fog combinations to lubricate a single tool, cylinder, or other air driven device

Technical data

Fluid:

Compressed air

Maximum pressure:
250 psig (17 bar)

Operating temperature*:
0° to 175°F (-20° to 80°C)

* Air supply must be dry enough to avoid ice formation at temperatures below 35°F (2°C).

Start point (minimum flow required for lubricator operation):

8 scfm (3.8 dm³/s) at 90 psig (6.3 bar) inlet pressure

Regulator gauge ports:

1/4" PTF with PTF main ports

R1/4 with ISO Rc, ISO G, and BSPP main ports

Nominal bowl size:

1 quart US (1 liter)

Manual drain connection:

Will fit 1/8-27 and 1/8-28 pipe thread

Automatic drain connection:

Will fit 1/8-27 and 1/8-28 pipe thread

Automatic drain operating conditions (float operated)

Bowl pressure required to close drain:

Greater than 5 psig (0.3 bar)

Bowl pressure required to open drain:

Less than 3 psig (0.2 bar)

Ordering Information

Models listed have PTF port threads. Filters and lubricators have metal bowl with sight glass. Filters have 40 µm element and automatic drain. Lubricators have manual drain. Regulators are relieving type with gauge, knob adjustment, and outlet pressure adjustment range of 5 to 125 psig (0.3 to 8.5 bar)*.

Port Size	Micro-Fog Models	Oil-Fog Models	Weight lbs (kg)
3/4"	P8A-660-A3DA	P8B-660-A3DA	6.69 (3.03)
1"	P8A-860-A3DA	P8B-860-A3DA	6.29 (2.85)
1-1/4"	P8A-A60-A3DA	P8B-A60-A3DA	7.51 (3.41)
1-1/2"	P8A-B60-A3DA	P8B-B60-A3DA	6.88 (3.12)

* Outlet pressure can be adjusted to pressures in excess of, and less than, those specified. Do not use these units to control pressures outside of the specified ranges.

Minimum air flow required to close drain:

2 scfm (1 dm³/s)

Manual operation:

Depress pin inside drain outlet to drain bowl

Materials

Bodies, bowls, regulator bonnet:

Aluminum

Bowl sight glass: Pyrex

Filter element: Sintered bronze

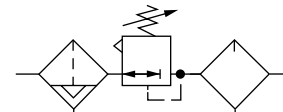
Regulator bottom plug: Acetal

Regulator valve: Aluminum and nylon

Lubricator sight-feed dome: Transparent nylon

Elastomers: Neoprene and nitrile

ISO Symbols



Filter with automatic drain, relieving regulator, lubricator with manual drain

ALE-86

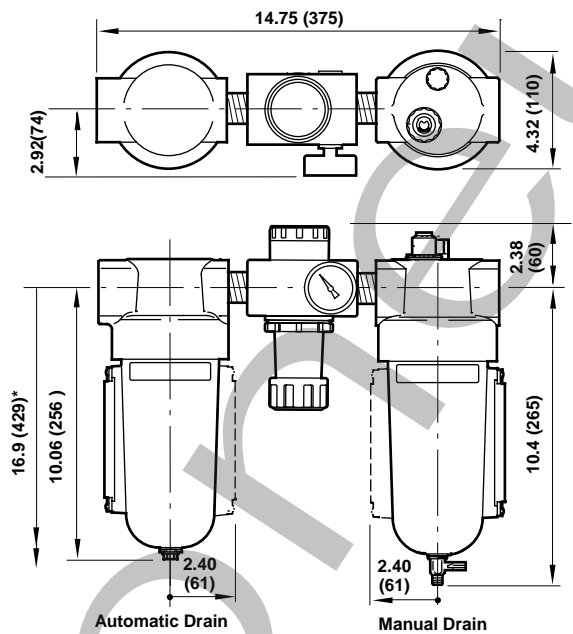
Filter-Regulator-Lubricator Combination Units

P8A, P8B

Alternative Models

Regulator Adjustment		Substitute	Threads		Substitute
T-bar		H	PTF		A
Knob		P	BSPP (1-1/2" ported units only)		C
			ISO G parallel (not available with 1-1/2" ported units)		G
Lubricator Type		Substitute	Lubricator Reservoir		Substitute
Micro-Fog		A	1 quart US (1 liter) metal, drain, sight glass		D
Oil-Fog		B			
Port Size		Substitute	Filter Element		Substitute
3/4"		6	40 µm		3
1"		8			
1-1/4"		A	Filter Drain		Substitute
1-1/2"		B	Automatic		A
			Manual		M

Filter Bowl	Outlet Pressure Adjustment Range*		Relief Type	Gauge	Substitute
	psig	bar			
Metal, sight glass	5 to 125	0.3 to 8.5	Relieving	With	60
Metal, sight glass	5 to 125	0.3 to 8.5	Relieving	Without	61
Metal, sight glass	5 to 125	0.3 to 8.5	Non relieving	Without	62
Metal, sight glass	5 to 125	0.3 to 8.5	Non relieving	With	63
Metal, sight glass	5 to 50	0.3 to 3.5	Relieving	Without	64
Metal, sight glass	5 to 50	0.3 to 3.5	Relieving	With	65
Metal, sight glass	5 to 50	0.3 to 3.5	Non relieving	Without	66
Metal, sight glass	5 to 50	0.3 to 3.5	Non relieving	With	67
Metal, sight glass	10 to 250	0.7 to 17	Relieving	Without	76
Metal, sight glass	10 to 250	0.7 to 17	Relieving	With	77
Metal, sight glass	10 to 250	0.7 to 17	Non relieving	Without	76
Metal, sight glass	10 to 250	0.7 to 17	Non relieving	With	79



* Minimum clearance required to remove bowl.

Dimensions in inches (mm)

Service Kits

Item	Type	Part Number
Lubricator service kit	All o-rings, seals, gaskets	5771-02
Filter service kit	All o-rings, seals, gaskets	5578-05
	40 µm element	5311-03
Replacement drain	Automatic	3000-10
Sight glass kit *	Pyrex	2273-22
Regulator service kit **	Relieving	5578-02
	Non relieving	5578-01
Replacement drain	1/4 Turn	619-50

* Sight glass kit contains bowl o-ring plus all o-rings, seals, screws, glass, and glass guard.

** Regulator service kit contains, diaphragm, all o-rings, valve, and valve spring.

ALE-87

Air line equipment

Filter-Lubricator Combination Units

07 Series

Compact design

Filter removes liquids and solid particles down to 5 µm

Micro-Fog lubricator provides air line lubrication to one or more air driven tools or other devices

Nearly constant oil density output with varying air flow

Can be disassembled without the use of tools or removal from the air line

Technical data

Fluid:

Maximum pressure:

Transparent bowl:

150 psig (10 bar)

Metal bowl:

250 psig (17 bar)

Operating temperature*:

Transparent bowl: 0° to 125°F (-20° to 50°C)

Metal bowl: 0° to 175°F (-20° to 80°C)

* Air supply must be dry enough to avoid ice formation at temperatures below 35°F (2°C).

Nominal bowl size:

1 fluid ounce (31 ml)

Drain connection:

Will fit 1/8-27 and 1/8-28 pipe thread

Filter

Automatic drain operation:

Spitter type drain operates momentarily when a rapid change in air flow occurs or when the supply pressure is reduced.

Lubricator

Start point (i.e. minimum flow required for lubricator operation): 0.5 scfm (0.24 dm³/s) at 90 psig (6.3 bar) inlet pressure

Nominal bowl size:

1 fluid ounce (31 ml)

Materials:

Body: Zinc

Bowl:

Transparent: Polycarbonate

Metal: Zinc

Filter element: Sintered polypropylene

Sight feed dome: Transparent nylon

Elastomers: Neoprene and nitrile

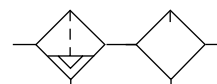


Ordering information

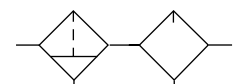
Models listed include PTF threads, filter with transparent bowl, automatic drain, 5 µm element, lubricator with transparent reservoir and manual drain.

Port Size	Model Numbers	Weight lb (kg)
1/8"	P1C-100-A1AA	0.58 (0.26)
1/4"	P1C-200-A1AA	0.58 (0.26)

ISO Symbols



Filter with automatic drain, lubricator with manual drain



Filter manual drain, lubricator with manual drain

ALE-88

Filter-Lubricator Combination Units

07 Series

Alternative Models

P 1 C - * * * - * * * *

Port Size	Substitute
1/8"	1
1/4"	2

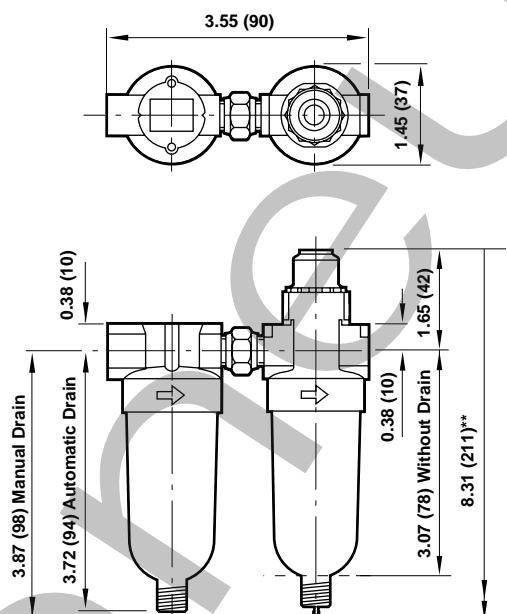
Filter Bowl	Substitute
Transparent	00
Metal	40

Threads	Substitute
PTF	A
ISO G parallel	G

Lubricator Reservoir	Substitute
Transparent with drain	A
Transparent without drain	Q
Metal with drain / no sight glass	M
Metal without drain / no sight glass	F

Filter Element	Substitute
5 µm	1
40 µm	3

Filter Drain	Substitute
Automatic	A
Manual	M



** Minimum clearance to remove bowl

Dimensions in inches (mm)

Service Kits

Item	Type	Part number
Service kits, filter	5 µm element	3652-17
	40 µm element	3852-18
Service kit, lubricator		3795-03
Replacement drains	Manual	773-03
	Automatic	3654-02

Filter service kit contains element, element gasket, and bowl o-ring.
Lubricator service kit contains sight-feed dome seal, cartridge o-ring, and bowl o-ring.



P8C and P8D Filter-Lubricator Combination Units

17 Series

Combines outstanding of the Norgren F17 filters and L17 lubricators

All around (360°) visibility of the lubricator sight-feed dome simplifies installation and adjustment

Screw-on bowl reduces maintenance time

Can be disassembled without the use of tools or removal from the air line

Lubricator flow sensor design provides a nearly constant oil/air ratio over a wide range of air flows

Technical data

Fluid:

Compressed air

Maximum pressure:

250 psig (17 bar)

Operating temperature*:

0° to 175°F (-20° to 80°C)

* Air supply must be dry enough to avoid ice formation at temperatures below 2°C (35°F).

Start point (minimum flow required for lubricator operation):

8 scfm (3.8 dm³/s) at 90 psig (6.3 bar) inlet pressure

Typical flow with 90 psig (6.3 bar) inlet pressure and 7 psig (0.5 bar) pressure drop:

1" Ports: 250 scfm (118 dm³/s)

Nominal bowl size:

1 quart US (1 liter)

Automatic drain connection:

Will fit 1/8-27 and 1/8-28 pipe thread

Automatic drain operating conditions

Minimum pressure:

10 psig (0.7 bar). Drain opens when bowl pressure drops below 3 psig (0.2 bar).

Minimum air flow:

2 scfm (1 dm³/s) required to close drain.

Materials

Body: Aluminum

Bowls: Aluminum

Bowl sight glass: Pyrex

Sight-feed dome: Transparent nylon

Elastomers: Neoprene and nitrile

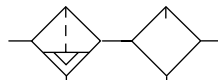


Ordering Information

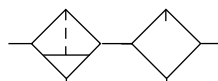
Models listed include 1 quart (1 liter) metal bowls with sight glass, automatic drain on filter, manual drain on lubricator, and PTF.

Port Size	Micro-Fog Models	Oil-Fog Models	Weight lbs (kg)
3/4"	P8C-660-A3DA	P8D-660-A3DA	8.49 (3.85)
1"	P8C-860-A3DA	P8D-860-A3DA	8.32 (3.77)
1-1/4"	P8C-A60-A3DA	P8D-A60-A3DA	9.54 (4.33)
1-1/2"	P8C-B60-A3DA	P8D-B60-A3DA	8.36 (3.79)

ISO Symbols



Filter with automatic drain, Lubricator with manual drain



Filter manual drain, Lubricator with manual drain

P8C and P8D Filter-Lubricator Combination Units

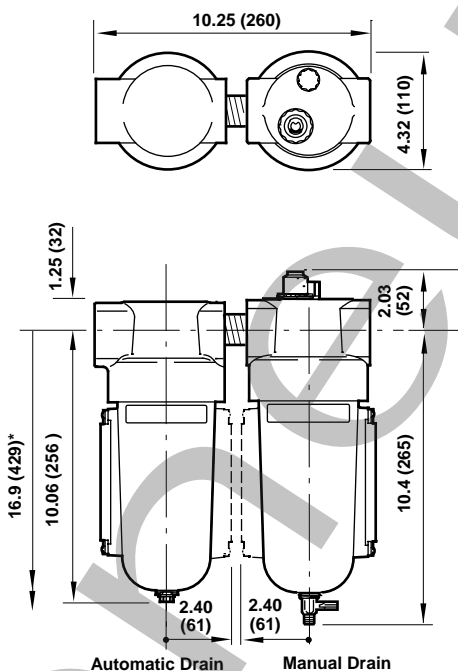
17 Series

Alternative Models

P 8 ★ - ★ ★ ★ - ★ ★ ★ ★

Lubricator Type	Substitute
Micro-Fog	C
Oil-Fog	D
Port Size	Substitute
3/4"	6
1"	8
1-1/4"	A
1-1/2"	B
Filter Bowl	Substitute
Metal with sight glass	60

Threads	Substitute
PTF	A
BSPP (1-1/2" ported units only)	C
ISO G parallel (not available with 1-1/2" ported units)	G
Lubricator Reservoir	Substitute
1 quart (1 liter) metal, drain, sight glass	D
Filter Element	Substitute
40 µm	3
Filter Drain	Substitute
Automatic	A
Manual	M



* Minimum clearance required to remove bowl.
Dimensions in inches (mm)

Service Kits

Item	Type	Part Number
Lubricator service kit	All o-rings, seals, gaskets	5771-02
Filter service kit	All o-rings, seals, gaskets 40 µm element	5578-05 5311-03
Replacement drain	Automatic Manual (1/4 Turn)	3000-10 619-50
Sight glass kit	All o-rings, seals, gaskets	2273-22

Sight glass kit contains bowl o-ring plus all o-rings, seals, screws, glass, and glass guard.