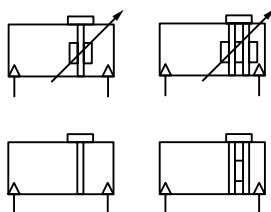


LINTRA[®]-Lite rodless cylinders

A44000

Double acting
Ø 25 ... 40 mm



- New compact. space-saving design
- Proven sealing system
- Integral switch mounting
- Buffer or adjustable cushioning
- Standard foot mountings

Technical data

Medium:
Compressed air, filtered, lubricated or non-lubricated

Operation:
Double acting, buffer or adjustable cushioning, magnetic or non-magnetic piston

Operating pressure:
15 to 116 psig

Operating temperature:
-22°F to +180°F max.
Consult our Technical Service for use below +35°F

Strokes:
Made to order maximum 236 inches

Materials
Barrel: anodised aluminum alloy
End covers: zinc plated steel/aluminum
Yoke: anodized aluminum alloy
Pistons: plastic
Cover: plastic
Sealing strip: polyurethane
Cover strip: polyamide
Seals: nitrile rubber & polyurethane

Standard models

Ø	Non-magnetic		Magnetic	
	Buffer cushioning	Adjustable cushioning	Buffer cushioning	Adjustable cushioning
25	A44025AAAAN*	A44025AACAN*	A44025AABAN*	A44025AADAN*
32	A44032AAAAN*	A44032AACAN*	A44032AABAN*	A44032AADAN*
40	A44040AAAAN*	A44040AACAN*	A44040AABAN*	A44040AADAN*

* Cylinders shown above use NPT porting, stroke length in inches.
For ISO G porting insert an "A" in the 11th position and provide stroke length in mm.
Note: For service kits see Norgren website reference below.

Options selector

A440**AA*A*****

Cylinder Diameters Nominal Inch (mm)	Specify
ø 1" (ø 25mm)	25
ø 1-1/4" (ø 32mm)	32
ø 1-1/2" (ø 40mm)	40

Variants	Specify
Bumper cushioning, non-magnetic piston	A
Bumper cushioning, magnetic piston	B
Adjustable cushioning, non-magnetic piston	C
Adjustable cushioning, magnetic piston	D

Porting	Specify
ISO G-thread (Specify stroke in mm)	A
NPT-Thread (Specify stroke in inches)	N

Fractional Increments of Stroke in Inch			
A = 0	E = 1/4	J = 1/2	P = 3/4
B = 1/16	F = 5/16	K = 9/16	R = 13/16
C = 1/8	G = 3/8	M = 5/8	S = 7/8
D = 3/16	H = 7/16	N = 11/16	T = 15/16
X = Special			

Specify Stroke Length*
236 inches (6000mm) maximum

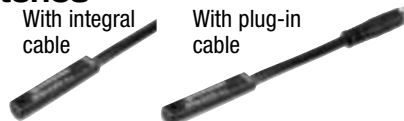
*inches for NPT (mm for ISO G) thread

Bore Size Conversion:	
ø 25mm =	.984" 1"
ø 32mm =	1.260" 1-1/4"
ø 40mm =	1.575" 1-1/2"

Mountings

Ø	S	V
25	Q44025AAAAAM337	Q44025AAAAAM332
32	Q44032AAAAAM337	Q44032AAAAAM332
40	Q44040AAAAAM337	Q44040AAAAAM332

Switches



	Model	Plug-in cable	Groove cover
Reed	M/50/LSU*/V	M/50/LSU/CP	M/P73001/5 (5 m)
Solid state	M/50/EAP*/V	M/50/EAP/CP	M/P73001/5 (5 m)

*Insert cable length - 2.5 or 10 m.

**Insert stroke length in inches for NPT ports, and mm for metric ports.

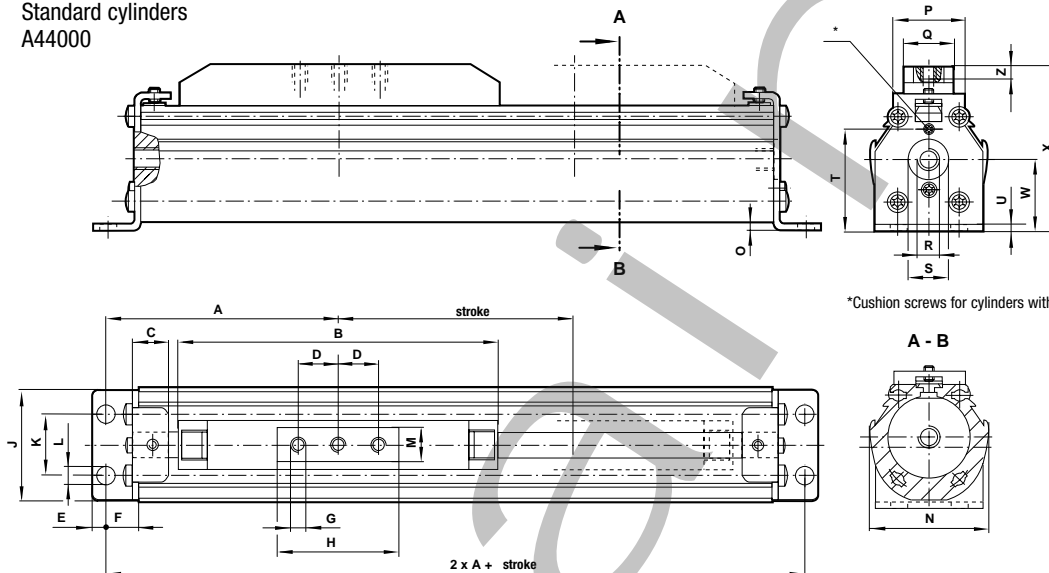
LINTRA®-Lite rodless cylinders

A44000

Double acting

Ø 25 ... 40 mm

Standard cylinders
A44000

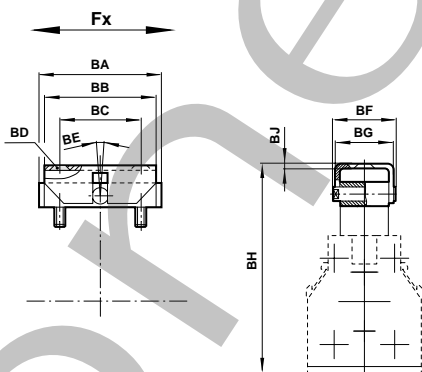


*Cushion screws for cylinders with adjustable cushioning

Ø	A	B	C	D	E	F	G	H	J	K	ØL	M	N	O	P	Q	R (port)	ØS	T	U	W	X	Z max.	Wt per inch (mm) of stroke lb (kg)
25	3.03 (77)	3.94 (100)	0.47 (12)	0.49 (12.5)	0.20 (05)	0.47 (12)	M5	1.57 (40)	1.42 (36)	0.71 (18)	0.28 (07)	0.71 (18)	1.57 (40)	0.10 (2.5)	1.10 (28)	0.87 (22)	NPT 1/8"	0.47 (12)	1.20 (30.5)	0.08 (2)	0.85 (21.5)	2.10 (53.5)	0.28 (7)	0.08 (0.15)
32	3.66 (93)	4.72 (120)	0.71 (18)	0.59 (15)	0.28 (07)	0.59 (15)	M6	1.97 (50)	1.89 (48)	1.02 (26)	0.35 (09)	0.79 (20)	1.95 (49.5)	0.10 (2.5)	1.26 (32)	0.94 (24)	NPT 1/8"	0.67 (17)	1.57 (40)	0.12 (3)	1.12 (28.5)	2.76 (70)	0.39 (10)	0.14 (0.25)
40	4.63 (117.5)	6.50 (165)	0.71 (18)	0.79 (20)	0.28 (07)	0.67 (17)	M6	2.36 (60)	2.13 (54)	1.18 (30)	0.35 (09)	0.79 (20)	2.24 (57)	0.14 (3.5)	1.42 (36)	0.94 (24)	G1/4	0.79 (20)	1.95 (48.5)	0.12 (3)	1.38 (35)	3.21 (81.5)	0.39 (10)	0.19 (0.35)

Dimensions in inches (mm)

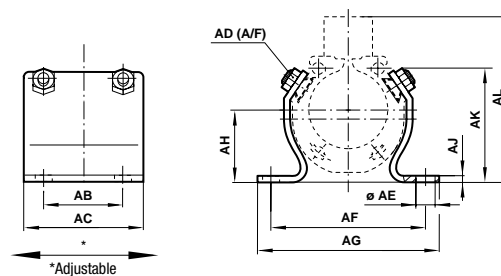
Swinging bridge – S
Q44000AAAAAM337



Ø mm	BA	BB	BC	BD	BE	BF	BG	BH	BJ	Weight lbs (kg)
25	1.57 (40)	1.57 (40)	1.10 (28)	BM6 (DIN74)	± .315 (± 8)	1.14 (29)	1.10 (28)	2.70 +0.2 -0 (68.5 +5 -0)	0.08 (2)	0.33 (0.15)
32	1.97 (50)	2.17 (55)	1.57 (40)	BM6	± .315 (± 8)	1.22 (31)	1.18 (30)	3.44 +0.2 -0 (87.5 +5 -0)	0.08 (2)	0.44 (0.20)
40	2.36 (60)	2.17 (55)	1.57 (40)	BM6	± .315 (± 8)	1.22 (31)	1.18 (30)	3.92 +0.2 -0 (99.5 +5 -0)	0.08 (2)	0.55 (0.25)

Dimensions in inches (mm)

Center support – V
Q44000AAAAAM332



Ø mm	AB	AC	AD (A/F)	ØAE	AF	AG	AH	AJ	AK	AL	Weight lbs (kg)
25	0.98 (25)	1.57 (40)	0.39 (10)	0.26 (6.6)	2.28 (58)	2.76 (70)	0.85 (21.5)	0.12 (3)	1.22 (31)	2.11 (53.5)	0.15 (0.07)
32	1.18 (30)	1.97 (50)	0.39 (10)	0.35 (9)	2.76 (70)	3.27 (83)	1.12 (28.5)	0.12 (3)	1.69 (43)	2.76 (70)	0.33 (0.15)
40	1.57 (40)	2.36 (60)	0.39 (10)	0.35 (9)	3.11 (79)	3.62 (92)	1.37 (35)	0.12 (3)	2.17 (55)	3.21 (81.5)	0.55 (0.25)

Dimensions in inches (mm)