

Actuators

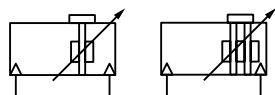
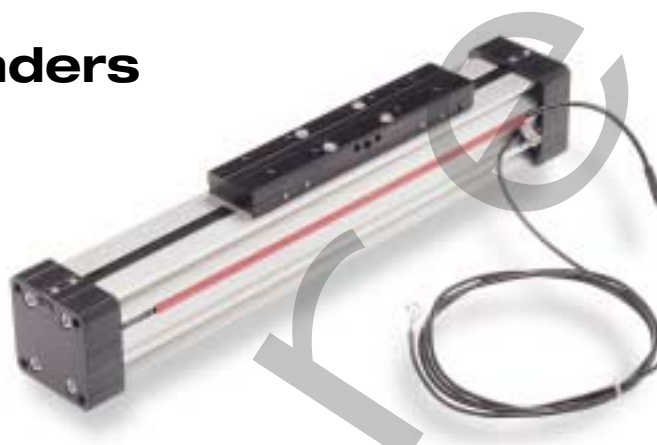
LINTRA® Rodless cylinders

C/46000B, C/46100B, C/46200B

Internal, external and precision roller guided

Double acting

Ø 16 ... 80 mm



Well proven, long life sealing technology

Lightweight design extrusion with integral switch mounting slots

Capable of withstanding large bending moments and lateral forces

Non-lube operation

Wide range of variants

Technical data

Medium:

Compressed air, filtered and lubricated or non-lubricated

Operation:

C/46000B/M, C/46100B/M,

C/46200B/M

Double acting, adjustable cushioning, magnetic piston

Operating pressure:

14 to 145 psi

(22 to 145 psi for Ø 16 mm)

Operating temperature:

-22°F to +176°F* (-30°C to + 80°C)

*With dewpoint of supply air less than ambient air temperature.

Maximum strokes:

Made to order

Ø 16 to 40 mm: 8500 mm

Ø 50 and 63 mm: 7000 mm

Ø 80: 5500 mm

Materials

End covers: plastic (Ø 16) or anodized aluminum (Ø 20 ... 80)

Yoke: plastic (Ø 16 and 20), anodized aluminum (Ø 25 ... 80)

Cylinder barrel: extruded anodized aluminum alloy

Sealing strip & piston seals: polyurethane

Cover strip: polyimide

Seals: nitrile rubber

Standard models

Ø	Port size inch (mm)	Internal guide Magnetic	External guide Magnetic	Precision roller guide Magnetic
16	- (M5)	C/46016B/M/*	C/46116B/M/*	-
20	1/8 NPT (G-1/8)	C/46020B/M/*	C/46120B/M/*	-
25	1/8 NPT (G-1/8)	C/46025B/M/*	C/46125B/M/*	C/46225B/M/*
32	1/4 NPT (G-1/4)	C/46032B/M/*	C/46132B/M/*	C/46232B/M/*
40	1/4 NPT (G-1/4)	C/46040B/M/*	C/46140B/M/*	C/46240B/M/*
50	3/8 NPT (G-3/8)	C/46050B/M/*	C/46150B/M/*	C/46250B/M/*
63	1/2 NPT (G-1/2)	C/46063B/M/*	C/46163B/M/*	C/46263B/M/*
80	1/2 NPT (G-1/2)	C/46080B/M/*	C/46180B/M/*	-

* Cylinders shown above use NPT porting, stroke in inches
For ISO G porting insert an "M" in the first position and provide stroke length in mm.
Note: For service kits see Norgren website reference below.

Options selector

C/46 ★★ ★ B/M/★

Porting	Substitute
NPT Porting	C
ISO G Porting	M

Guiding system	Substitute
Internal	0
External	1
Roller	2

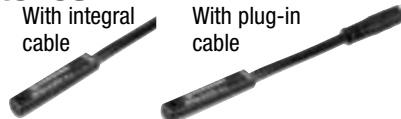
Cylinder diameters mm
16, 20, 25, 32, 40, 50, 63, 80

Strokes C = inch M = mm
Stroke length in inches for NPT ports
Stroke length in mm for ISO G ports

Variants (magnetic piston) Substitute	
Standard	M
Alternative ports	MC
Active brake	L3
Passive brake	L4

Note: Disregard option positions not used.
For combinations of cylinder variants consult our Technical Service.

Switches



	Model	Plug-in cable	Groove cover
Reed	M/50/LSU*/V M/50/LSU/CP	M/P73001/5 (5 m)	M/K72725**
Solid state	M/50/EAP*/V M/50/EAP/CP	M/P73001/5 (5 m)	

*Insert cable length – 2.5 or 10 m.
**Insert stroke length in inches for NPT ports, and mm for metric ports.

LINTRA Rodless cylinders

C/46000B, C/46100BM, C/46200B

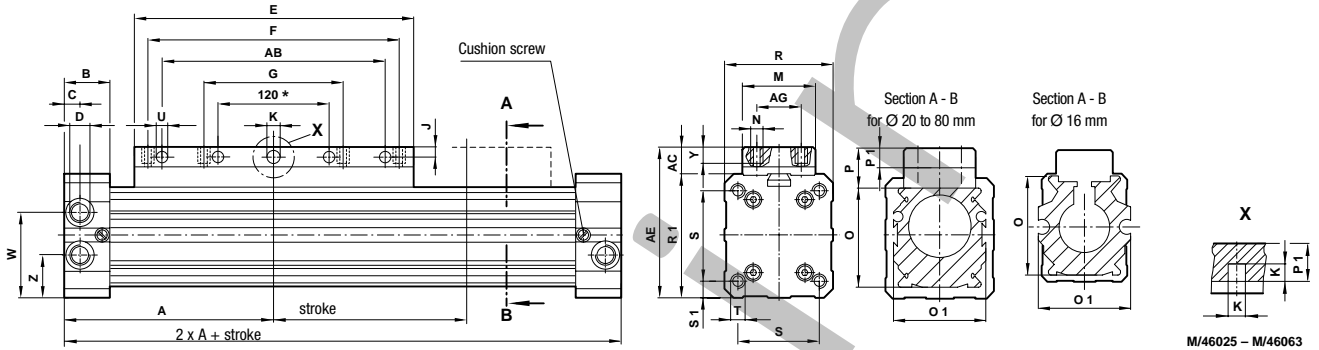
Internal, external and precision roller guided

Double acting

Ø 16 ... 80 mm

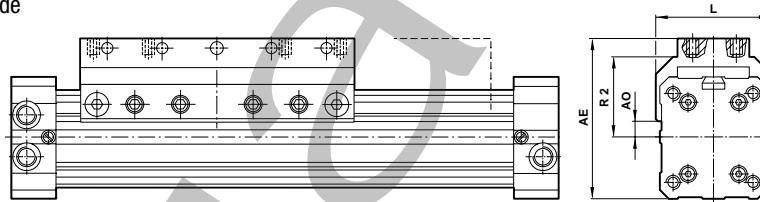
Standard cylinders

C/46000B/M – Cylinders with internal guide



*For cylinder Ø 80 mm

C/46100B/M – Cylinders with external guide



internal guiding / external guiding

Ø	A	AB	AC	AE	AG	AO	B	C	D	E	F	G	J	K	L
16	2.46 (62.5)	–	0.28 (7)	1.50 (38)	0.31 (8)	/0.30 (7.5)	0.69 (18)	0.31 (8)	– M5	3.15 (80)	2.36 (60)	–	0.10 (2.5)	Ø 0.12 G7 (3)	1.22 (31)
20	3.34 (85)	/2.36 (60)	0.55 (14)	2.13/2.32 (54/59)	0.71 (18)	/0.26 (6.5)	0.91 (23)	0.31 (8)	1/8 NPT G1/8	4.33 (110)	3.15 (80)	1.57 (40)	0.14 /0.30 (3.5/7.5)	Ø 0.17H9 (4.2)	1.65 (42)
25	3.93 (100)	/2.76 (70)	0.47 (12)	2.36/2.66 (60/67.5)	0.79 (20)	/0.37 (9.5)	0.91 (23)	0.57 (14.5)	1/8 NPT G1/8	5.12 (130)	3.54 (90)	1.77 (45)	/0.20 (5)	□ 0.18 (4.5)	2.05 (52)
32	4.72 (120)	/3.54 (90)	0.63 (16)	3.00/3.23 (76/82)	0.98 (25)	/0.61 (15.5)	1.06 (27)	0.41 (10.5)	1/4 NPT G1/4	6.30 (160)	4.72 (120)	2.36 (60)	/0.20 (5)	□ 0.24 (6)	2.52 (64)
40	5.91 (150)	/4.72 (120)	0.60 (15)	3.54/3.84 (90/97.5)	0.98 (25)	/0.65 (16.5)	1.18 (30)	0.45 (11.5)	1/4 NPT G1/4	8.46 (215)	6.30 (160)	3.15 (80)	/0.20 (5)	□ 0.24 (6)	3.11 (79)
50	7.09 (180)	/6.30 (160)	0.79 (20)	4.33/4.61 (110/117)	0.98 (25)	/0.94 (24)	1.38 (35)	0.55 (14)	3/8 NPT G3/8	9.84 (250)	7.48 (190)	3.74 (95)	/0.26 (6.5)	□ 0.32 (8)	3.62 (92)
63	8.46 (215)	/7.48 (190)	0.79 (20)	4.92/5.39 (125/137)	0.98 (25)	/1.00 (25.5)	1.57 (40)	0.67 (17)	1/2 NPT G1/2	12.60 (320)	9.45 (240)	4.72 (120)	/0.30 (7.5)	□ 0.32 (8)	4.33 (110)
80	10.23 (260)	9.45 (240)	0.94 (24)	6.06/6.50 (154/165)	0.98 (25)	/1.50 (38)	1.77 (45)	0.67 (17)	1/2 NPT G1/2	15.35 (390)	11.81 (300)	5.91 (150)	0.35 /0.39 (9/10)	Ø 0.47G7 (12)	5.12 (130)

Ø	M	N	O	O1	P	P1	R	R1	R2	S	S1	T	Ø U	W	Y	Z
16	0.71 (18)	M3	0.98 (25)	1.26 (32)	0.47 (12)	–	1.06 (27)	1.22 (31)	/0.73 (18.5)	0.63 (16)	0.22 (5.5)	M3x5 deep	–	–	0.16/0.20 (4/5)	0.63 (16.3)
20	1.06/1.06 (27/27)	M5	1.26 (32)	1.50 (38)	0.73 (18.5)	–	1.57 (40)	1.57 (40)	/0.94 (24)	1.26 (32)	0.16 (4)	M5x12 deep	–	–	0.47 (12)	0.85 (21.5)
25	1.26/1.26 (32/32)	M5	1.57 (40)	1.77 (45)	0.63 (16)	0.30 (7.5)	1.89 (48)	1.89 (48)	/1.34 (34)	1.46 (37)	0.22 (5.5)	M5x13 deep	–	1.30 (33)	0.28/0.47 (7/12)	0.67 (17)
32	1.77/1.77 (45/45)	M5	2.05 (52)	2.05 (52)	0.79 (20)	0.39 (10)	2.36 (60)	2.36 (60)	/1.67 (42.5)	1.85 (47)	0.26 (6.5)	M6x15 deep	–	1.57 (40)	0.31/0.47 (8/12)	0.79 (20)
40	1.77/1.77 (45/45)	M6	2.56 (65)	2.56 (65)	0.79 (20)	0.39 (10)	2.95 (75)	2.95 (75)	/1.95 (49.5)	2.28 (58)	0.33 (8.5)	M8x20 deep	–	1.97 (50)	0.31/0.47 (8/12)	0.98 (25)
50	1.97/1.97 (50/50)	M8	3.15 (80)	3.15 (80)	0.98 (25)	0.51 (13)	3.54 (90)	3.54 (90)	/2.30 (58.5)	2.76 (70)	0.39 (10)	M8x25 deep	–	2.36 (60)	0.43/0.67 (11/17)	1.18 (30)
63	1.97/1.97 (50/50)	M8	3.74 (95)	3.74 (95)	0.98 (25)	0.55 (14)	4.13 (105)	4.13 (105)	/2.68 (68)	3.31 (84)	0.41 (10.5)	M10x25 deep	–	2.76 (70)	0.43/0.79 (11/20)	1.38 (35)
80	1.97/1.97 (50/50)	M10	4.72 (120)	4.72 (120)	0.98 (29)	–	5.12 (130)	5.12 (130)	/3.20 (81)	3.94 (100)	0.59 (15)	M12x25 deep	0.43 (11)	3.54 (90)	0.60/0.98 (15/25)	1.57 (40)

Dimensions in inch (mm)

Actuators

LINTRA® Rodless cylinders

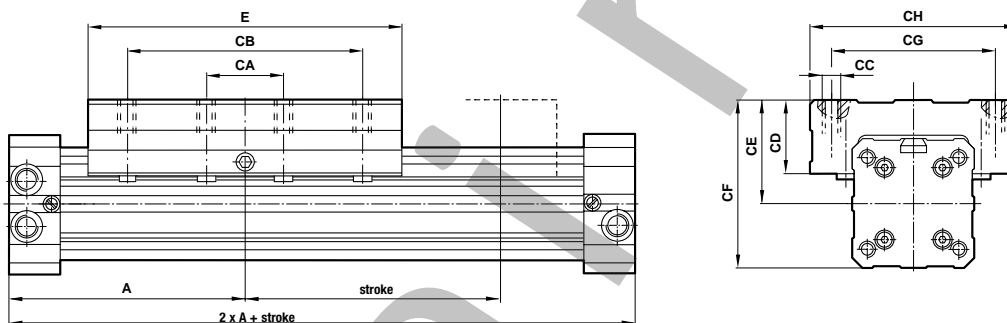
C/46000B, C/46100B, C/46200B

Internal, external and precision roller guided

Double acting

Ø 16 ... 80 mm

C/46200B/M – Cylinders with precision roller guide

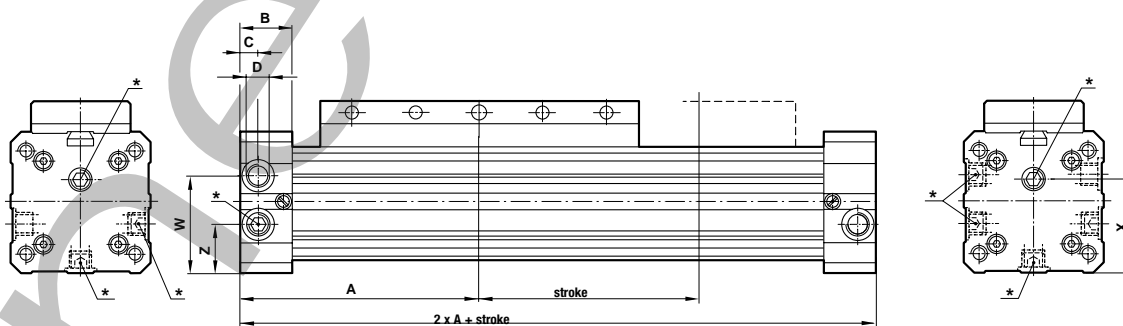


Ø mm	A	CA	CB	CC	CD	CE	CF	CG	CH	E
25	3.94 (100)	1.77 (45)	3.54 (90)	M6x14 deep	1.42 (36)	1.65 (42)	2.60 (66)	2.36 (60)	3.35 (85)	5.12 (130)
32	4.72 (120)	2.36 (60)	4.72 (120)	M8x16 deep	1.50 (38)	1.97 (50)	3.15 (80)	2.95 (75)	3.86 (98)	6.30 (160)
40	5.91 (150)	3.15 (80)	5.91 (150)	M8x16 deep	1.65 (42)	2.26 (57.5)	3.74 (95)	3.62 (92)	4.65 (118)	8.46 (215)
50	7.09 (180)	3.54 (90)	7.09 (180)	M10x20 deep	1.73 (44)	2.64 (67)	4.41 (112)	3.94 (100)	5.20 (132)	9.84 (250)
63	8.46 (215)	4.72 (120)	9.45 (240)	M10x20 deep	1.85 (47)	2.93 (74.5)	5.00 (127)	4.33 (110)	5.51 (140)	12.60 (320)

Dimensions in inch (mm)

Cylinder variants

C/46000B/MC, C/46100B/MC, C/46200B/MC – Cylinders with alternative ports



* Alternative ports with inserted plugs.

Ø	A	B	C	D	W	X	Z
25	3.94 (100)	0.91 (23)	0.57 (14.5)	1/8 NPT G/18	1.30 (33)	1.30 (33)	0.67 (17)
32	4.72 (120)	1.06 (27)	0.41 (10.5)	1/4 NPT G1/4	1.57 (40)	1.36 (34.5)	0.79 (20)
40	5.91 (150)	1.18 (30)	0.45 (11.5)	1/4 NPT G1/4	1.97 (50)	1.71 (43.5)	0.98 (25)
50	7.09 (180)	1.38 (35)	0.55 (14)	3/8 NPT G3/8	2.36 (60)	2.11 (53.5)	1.18 (30)
63	8.46 (215)	1.57 (40)	0.67 (17)	1/2 NPT G1/2	2.76 (70)	2.42 (61.5)	1.38 (35)

Dimensions in inch (mm)

ACT-96

LINTRA Rodless cylinders

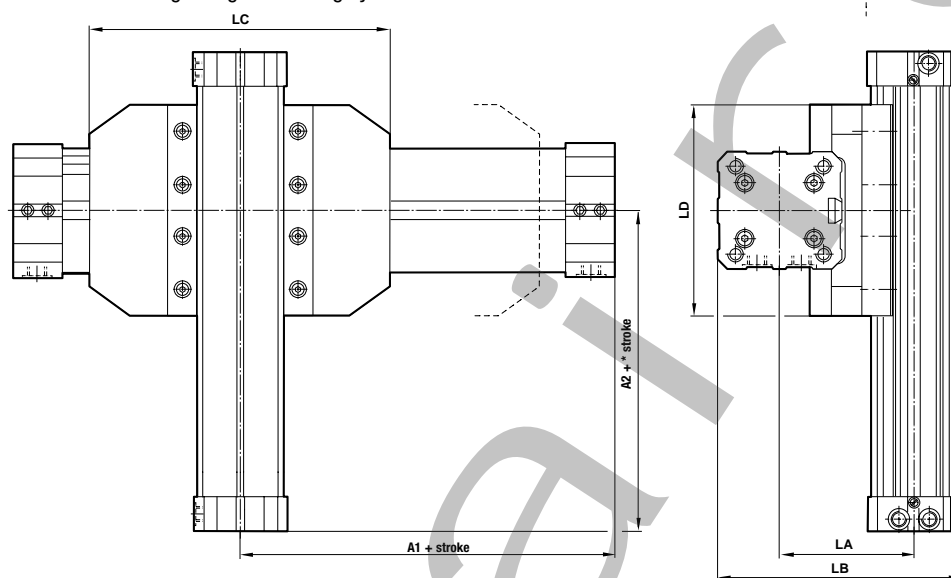
C/46000B, C/46100B, C/46200B

Internal, external and precision roller guided

Double acting

Ø 16 ... 80 mm

QM/46100B/33 and QM/46200B/35 – Right angle mounting system



Dimensions in inch (mm)

Externally Guided Right Angle Mounting System (Same bore size cylinders)

Note: For ISO ports replace "C" with "M" in second position of the cylinder number and state stroke length in mm.

Bore	Model	Right Angle Adapter	A1	A2	LA	LB	LC	LD
25 mm	QC/46025B/M*/33	QM/46125/25/33	3.9 (100)	3.9 (100)	2.7 (69)	4.6 (117)	5.1 (130)	5.1 (130)
25 mm	QC/46025B/M*/33	QM/46125/25/33	3.9 (100)	3.9 (100)	2.7 (69)	4.6 (117)	5.1 (130)	5.1 (130)
32 mm	QC/46032B/M*/33	QM/46132/32/33	4.7 (120)	4.7 (120)	3.3 (84)	5.7 (144)	6.3 (160)	6.3 (160)
32 mm	QC/46032B/M*/33	QM/46132/32/33	4.7 (120)	4.7 (120)	3.3 (84)	5.7 (144)	6.3 (160)	6.3 (160)
40 mm	QC/46040B/M*/33	QM/46140/40/33	5.9 (150)	5.9 (150)	3.8 (97)	6.8 (172)	8.5 (215)	8.5 (215)
40 mm	QC/46040B/M*/33	QM/46140/40/33	5.9 (150)	5.9 (150)	3.8 (97)	6.8 (172)	8.5 (215)	8.5 (215)
50 mm	QC/46050B/M*/33	QM/46150/50/33	7.1 (180)	7.1 (180)	4.6 (116)	8.1 (206)	9.8 (250)	9.8 (250)
50 mm	QC/46050B/M*/33	QM/46150/50/33	7.1 (180)	7.1 (180)	4.6 (116)	8.1 (206)	9.8 (250)	9.8 (250)

* Insert stroke length

Reduction 1 (One cylinder one size smaller than the other cylinder)

Note: For ISO ports replace "C" with "M" in second position of the cylinder number and state stroke length in mm.

Bore	Model	Right Angle Adapter	A1	A2	LA	LB	LC	LD
25 mm	QC/46025B/M*/33	QM/46125/20/33	3.9 (100)	3.4 (85)	2.4 (62)	4.2 (106)	5.1 (130)	4.3 (110)
20 mm	QC/46020B/M*/33	QM/46125/20/33	3.9 (100)	3.4 (85)	2.4 (62)	4.2 (106)	5.1 (130)	4.3 (110)
32 mm	QC/46032B/M*/33	QM/46132/25/33	4.7 (120)	3.9 (100)	3.0 (77)	5.1 (131)	6.3 (160)	5.1 (130)
25 mm	QC/46025B/M*/33	QM/46132/25/33	4.7 (120)	3.9 (100)	3.0 (77)	5.1 (131)	6.3 (160)	5.1 (130)

* Insert stroke length

Reduction 2 (One cylinder two bore sizes smaller than the other cylinder)

Note: For ISO ports replace "C" with "M" in second position of the cylinder number and state stroke length in mm.

Bore	Model	Right Angle Adapter	A1	A2	LA	LB	LC	LD
40 mm	QC/46040B/M*/33	QM/46140/25/33	5.9 (150)	3.9 (100)	3.0 (77)	5.5 (139)	8.5 (215)	5.1 (130)
25 mm	QC/46025B/M*/33	QM/46140/25/33	5.9 (150)	3.9 (100)	3.0 (77)	5.5 (139)	8.5 (215)	5.1 (130)
50 mm	QC/46050B/M*/33	QM/46150/32/33	7.1 (180)	4.7 (120)	3.3 (84)	6.7 (169)	9.8 (250)	6.3 (160)
32 mm	QC/46032B/M*/33	QM/46150/32/33	7.1 (180)	4.7 (120)	3.3 (84)	6.7 (169)	9.8 (250)	6.3 (160)
63 mm	QC/46063B/M*/33	QM/46163/40/33	8.5 (215)	5.9 (150)	4.3 (108)	7.8 (198)	12.6 (320)	8.5 (215)
40 mm	QC/46040B/M*/33	QM/46163/40/33	8.5 (215)	5.9 (150)	4.3 (108)	7.8 (198)	12.6 (320)	8.5 (215)

* Insert stroke length

Roller Guided Right Angle Mounting System Reduction 2 (One cylinder two bore sizes smaller than the other cylinder)

Note: For ISO ports replace "C" with "M" in second position of the cylinder number and state stroke length in mm.

Bore	Model	Right Angle Adapter	A1	A2	LA	LB	LC	LD
40 mm	QC/46240B/M*/35	QM/46240/25/35	5.9 (150)	3.9 (100)	3.2 (80)	5.6 (142)	8.5 (215)	5.1 (130)
25 mm	QC/46225B/M*/35	QM/46240/25/35	5.9 (150)	3.9 (100)	3.2 (80)	5.6 (142)	8.5 (215)	5.1 (130)
63 mm	QC/46263B/M*/35	QM/46263/40/35	8.5 (215)	5.9 (150)	4.3 (108)	7.8 (198)	12.6 (320)	8.5 (215)
40 mm	QC/46240B/M*/35	QM/46263/40/35	8.5 (215)	5.9 (150)	4.3 (108)	7.8 (198)	12.6 (320)	8.5 (215)

* Insert stroke length

Actuators

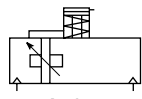
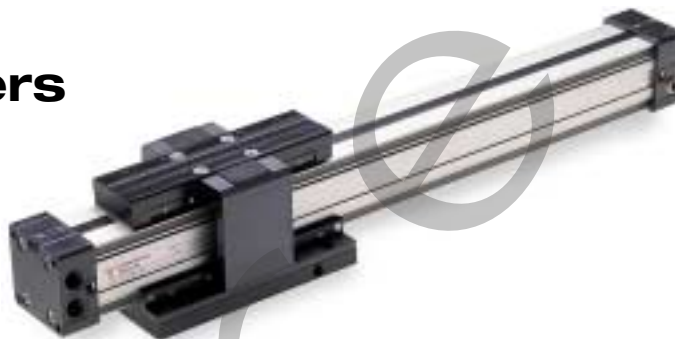
LINTRA® Rodless cylinders

C/46000B/L

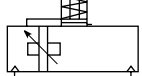
Internal guide with brake

Double acting

Ø 25 ... 63 mm



Active



Passive



PRODUCTS FOR
SAFE SYSTEMS

Standard models

Ø	Port size	Magnetic Active brake	Passive brake
25	1/8	C/46025B/L3/*	C/46025B/L4/*
32	1/4	C/46032B/L3/*	C/46032B/L4/*
40	1/4	C/46040B/L3/*	C/46040B/L4/*
50	3/8	C/46050B/L3/*	C/46050B/L4/*
63	1/2	C/46063B/L3/*	C/46063B/L4/*

* Cylinders shown above use NPT porting. For ISO G porting insert an "M" in the first position and provide stroke length in mm

Integral pneumatically actuated brakes – 'active' (L3) and 'passive' (L4)

Air supply to brake can be connected to either bottom or side

Asbestos free brake lining – safer working environment

Technical data

Medium:

Compressed air, filtered and lubricated.

Pressure (brake):

29 to 145 psi – active

58 to 145 psi – passive

Operating temperature:

+40°F to +158°F

Active brake:

Pressure applied to obtain brake action

Passive brake:

Pressure released to obtain brake action

Materials

Cylinder barrel: anodized aluminum alloy

End covers, yoke & carriage: anodized aluminum

Brake strip: stainless steel

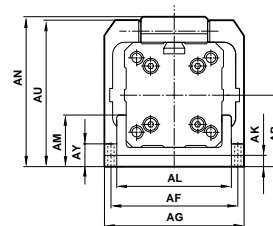
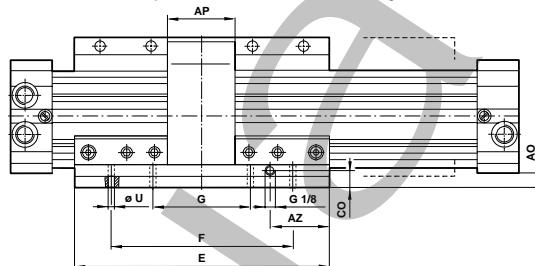
Brake liner: non-asbestos

Sealing strip & piston seals: polyurethane

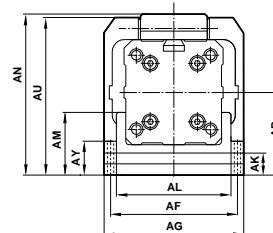
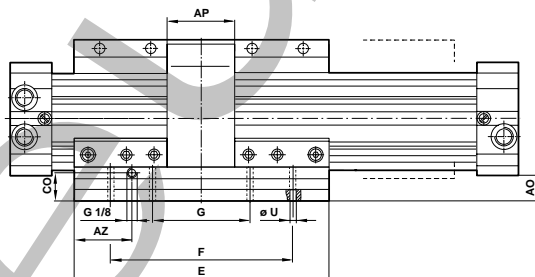
Cover strip: polyimide

Seals: nitrile rubber

C/46000B/L3 – Cylinders with active holding brake



C/46000B/L4 – Cylinders with passive holding brake



	Ø	AF	AG	AK	AL	AM	AN	AO	AP	AR	AU	AY	AZ	CO	E	F	G	Ø U
C/46025B/L3	25	2.44 (62)	2.95 (75)	0.47 (12)	2.05 (52)	1.12 (28.5)	2.89 (73.5)	0.53 (13.5)	1.77 (45)	1.47 (37.5)	2.87 (73)	0.65 (16.5)	1.18 (30)	0.24 (06)	5.12 (130)	3.54 (90)	1.77 (45)	0.26 (6.6)
C/46025B/L4	25	2.44 (62)	2.95 (75)	0.39 (10)	2.05 (52)	1.52 (38.5)	3.29 (83.5)	0.93 (23.5)	1.77 (45)	1.87 (47.5)	3.27 (83)	1.04 (26.5)	1.18 (30)	0.63 (16)	5.12 (130)	3.54 (90)	1.77 (45)	0.26 (6.6)
C/46032B/L3	32	3.07 (78)	3.62 (92)	0.47 (12)	2.52 (64)	1.14 (29)	3.54 (90)	0.55 (14)	2.17 (55)	1.73 (44)	3.52 (89.5)	0.69 (17.5)	1.28 (32.5)	0.24 (6)	6.30 (160)	4.72 (120)	2.36 (60)	0.35 (9)
C/46032B/L4	32	3.07 (78)	3.62 (92)	0.47 (12)	2.52 (64)	1.61 (41)	4.02 (102)	1.02 (26)	2.17 (55)	2.20 (56)	4.00 (101.5)	1.16 (29.5)	1.28 (32.5)	0.71 (18)	6.30 (160)	4.72 (120)	2.36 (60)	0.35 (9)
C/46040B/L3	40	3.70 (94)	4.41 (112)	0.47 (12)	3.19 (81)	1.36 (34.5)	4.07 (103.5)	0.53 (13.5)	2.56 (65)	2.01 (51)	4.06 (103)	0.71 (18)	2.07 (52.5)	0.24 (6)	8.46 (215)	6.30 (160)	3.15 (80)	0.35 (9)
C/46040B/L4	40	3.70 (94)	4.41 (112)	0.47 (12)	3.19 (81)	1.83 (46.5)	4.55 (115.5)	1.00 (25.5)	2.56 (65)	2.48 (63)	4.53 (115)	1.18 (30)	2.07 (52.5)	0.71 (18)	8.46 (215)	6.30 (160)	3.15 (80)	0.35 (9)
C/46050B/L3	50	4.41 (112)	5.20 (132)	0.47 (12)	3.70 (94)	1.40 (35.5)	4.90 (124.5)	0.57 (14.5)	2.95 (75)	2.34 (59.5)	4.88 (124)	0.73 (18.5)	2.56 (65)	0.24 (06)	9.84 (250)	7.48 (190)	4.72 (120)	0.43 (11)
C/46050B/L4	50	4.41 (112)	5.20 (132)	0.71 (18)	3.70 (94)	2.11 (53.5)	5.61 (142.5)	1.28 (32.5)	2.95 (75)	3.05 (77.5)	5.59 (142)	1.44 (36.5)	2.56 (65)	0.94 (24)	9.84 (250)	7.48 (190)	4.72 (120)	0.43 (11)
C/46063B/L3	63	5.20 (132)	5.91 (150)	0.47 (12)	4.41 (112)	1.67 (42.5)	5.53 (140.5)	0.61 (15.5)	3.54 (90)	2.68 (68)	5.51 (140)	0.81 (20.5)	4.53 (115)	0.24 (06)	12.60 (320)	9.45 (240)	4.72 (120)	0.51 (13)
C/46063B/L4	63	5.20 (132)	5.91 (150)	0.71 (18)	4.41 (112)	2.38 (60.5)	6.24 (158.5)	1.32 (33.5)	3.54 (90)	3.39 (86)	6.22 (158)	1.52 (38.5)	4.53 (115)	0.94 (24)	12.60 (320)	9.45 (240)	4.72 (120)	0.51 (13)

Dimensions in inch (mm)

ACT-98

LINTRA Rodless cylinders

C/46000B/L

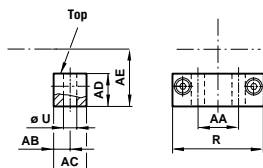
Internal, external and precision roller guided

Double acting

Ø 16 ... 80 mm

Foot mounting – C QM/460**/21

** Insert bore size

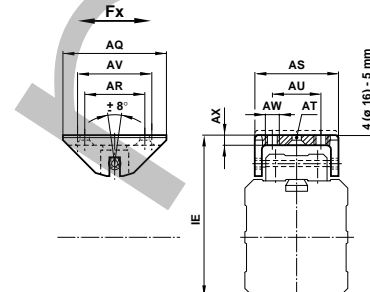


Ø	AA	AB	AC	AD	AE	R	ØU	lb (kg)
16	0.63 (16)	0.39 (10)	0.59 (15)	0.12 (03)	0.63 (16)	1.06 (27)	0.22 (5.5)	0.02 (0.01)
20	0.67 (17)	0.20 (05)	0.39 (10)	0.39 (10)	0.85 (21.5)	1.57 (40)	0.22 (5.5)	0.07 (0.03)
25	0.71 (18)	0.28 (07)	0.59 (15)	0.53 (13.5)	0.94 (24)	1.89 (48)	0.28 (7)	0.02 (0.01)
32	1.02 (26)	0.43 (11)	0.87 (22)	0.65 (16.5)	1.20 (30.5)	2.36 (60)	0.35 (9)	0.22 (0.1)
40	1.18 (30)	0.43 (11)	0.87 (22)	0.77 (19.5)	1.48 (37.5)	2.95 (75)	0.35 (9)	0.44 (0.2)
50	1.65 (42)	0.47 (12)	0.98 (25)	0.94 (24)	1.77 (45)	3.54 (90)	0.43 (11)	0.66 (0.3)
63	1.89 (48)	0.51 (13)	0.98 (25)	1.08 (27.5)	2.13 (54)	4.13 (105)	0.51 (13)	0.88 (0.4)
80	2.52 (64)	0.49 (12.5)	0.98 (25)	1.38 (35)	2.76 (70)	5.12 (130)	0.55 (14)	0.88 (0.4)

End cover mounts for cylinders Ø 25 to 80mm can be attached to give different distances AE. When used together with a center support mounting the word 'TOP' should be visible on the top face of the mount.
Dimensions in inch (mm)

Swinging bridge – S QM/460**/37

** Insert bore size

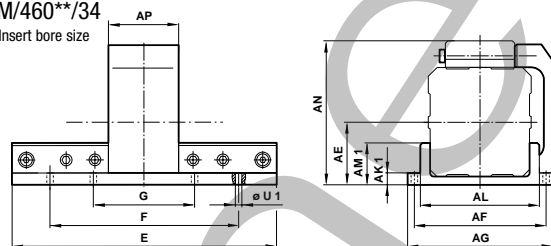


Ø	AQ	AR	AS	AT	AU	AV	AW	AX	IE	Fx (N)	lb (kg)
16	1.57 (40)	—	1.02 (26)	—	0.47 (12)	1.18 (30)	M4	0.16 (4)	1.89 +.16 (48 +4)	3.94 (100)	0.04 (0.02)
20	1.97 (50)	1.38 (35)	1.50 (38)	DIN74-Bm5	0.79 (20)	1.57 (40)	M5	0.20 (5)	2.58 +.20 (65.5 +5)	5.91 (150)	0.22 (0.10)
25	2.36 (60)	1.57 (40)	1.73 (44)	DIN74-Bm5	0.79 (20)	1.77 (45)	M5	0.20 (5)	2.76 +.20 (70 +5)	5.94 (250)	0.44 (0.20)
32	3.15 (80)	1.97 (50)	2.32 (59)	DIN74-Bm6	1.18 (30)	2.36 (60)	M6	0.22 (5.5)	3.48 +.20 (88.5 +5)	16.14 (410)	0.66 (0.30)
40	3.15 (80)	1.97 (50)	2.32 (59)	DIN74-Bm6	1.18 (30)	2.36 (60)	M6	0.22 (5.5)	4.04 +.20 (102.5 +5)	25.20 (640)	0.66 (0.30)
50	3.94 (100)	2.36 (60)	2.56 (65)	DIN74-Bm8	1.57 (40)	3.15 (80)	M8	0.26 (6.5)	4.88 +.20 (124 +5)	39.37 (1000)	1.10 (0.50)
63	3.94 (100)	2.36 (60)	2.56 (65)	DIN74-Bm8	1.57 (40)	3.15 (80)	M8	0.26 (6.5)	5.47 +.20 (139 +5)	59.06 (1500)	1.10 (0.50)
80	3.94 (100)	2.36 (60)	2.56 (65)	DIN74-Bm8	1.57 (40)	3.15 (80)	M8	0.26 (6.5)	6.63 +.20 (168.5 +5)	94.49 (2400)	1.10 (0.50)

Dimensions in inch (mm)

Carriage plate mounting – UV QM/460**/34

** Insert bore size

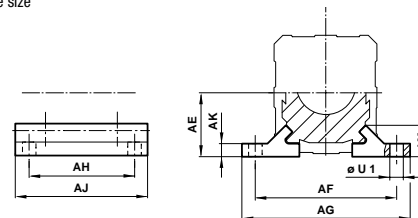


Ø	AE	AF	AG	AK1	AL	AM1	AN	AP	E	F	G	Ø U1	lb (kg)
16	0.63 (16)	1.57 (40)	1.97 (50)	0.14 (3.5)	1.22 (31)	0.33 (8.5)	1.59 (40.5)	1.18 (30)	3.15 (80)	2.36 (60)	-	0.22 (5.5)	0.22 (0.10)
20	0.85 (21.5)	2.05 (52)	2.44 (62)	0.22 (5.5)	1.65 (42)	0.57 (14.5)	2.20 (56)	1.42 (36)	4.33 (110)	3.15 (80)	1.57 (5.5)	0.22 (06)	0.44 (0.20)
25	1.04 (26.5)	2.44 (62)	2.95 (75)	0.22 (5.5)	2.05 (52)	0.69 (17.5)	2.46 (62.5)	1.77 (45)	5.12 (130)	3.54 (90)	1.77 (45)	0.26 (6.6)	0.66 (0.30)
32	1.30 (33)	3.07 (78)	3.62 (92)	0.26 (6.5)	2.52 (64)	0.71 (18)	3.11 (79)	2.17 (55)	6.30 (160)	4.72 (120)	2.36 (60)	0.35 (09)	0.88 (0.40)
40	1.59 (40.5)	3.70 (94)	4.41 (112)	0.30 (7.5)	3.19 (81)	0.94 (24)	3.66 (93)	2.56 (65)	8.46 (215)	6.30 (160)	3.15 (80)	0.35 (09)	1.76 (0.80)
50	1.93 (49)	4.41 (112)	5.20 (132)	0.31 (08)	3.70 (94)	0.98 (25)	4.49 (114)	2.95 (75)	9.84 (250)	7.48 (190)	3.74 (95)	0.43 (11)	2.65 (1.20)
63	2.26 (57.5)	5.20 (132)	5.91 (150)	0.39 (10)	4.41 (112)	1.26 (32)	5.12 (130)	3.54 (90)	12.60 (320)	9.45 (240)	4.72 (120)	0.51 (13)	4.41 (2.00)
80	2.76 (70)	6.10 (155)	7.09 (180)	0.39 (10)	5.20 (132)	1.26 (32)	6.26 (159)	3.94 (100)	15.35 (390)	11.81 (300)	5.91 (150)	0.55 (14)	6.39 (2.90)

Dimensions in inch (mm)

Center support – V QM/460**/32

** Insert bore size



Ø	AE	AF	AG	AH	AJ	AK	AM	Ø U1	lb (kg)
16	0.63 (16)	1.57 (40)	1.97 (50)	0.79 (20)	1.18 (30)	0.14 (3.5)	0.35 (9)	0.22 (5.5)	0.02 (0.01)
20	0.85 (21.5)	2.05 (52)	2.44 (62)	1.77 (45)	2.36 (60)	0.18 (5)	0.47 (12)	0.22 (5.5)	0.07 (0.03)
25	0.94 (24)	2.36 (60)	2.83 (72)	2.36 (60)	3.15 (80)	0.22 (5.5)	0.51 (13)	0.26 (6.6)	0.09 (0.04)
32	1.20 (30.5)	2.99 (76)	3.62 (92)	2.76 (70)	3.94 (100)	0.26 (6.5)	0.73 (18.5)	0.35 (9)	0.15 (0.07)
40	1.48 (37.5)	3.62 (92)	4.25 (108)	3.54 (90)	4.72 (120)	0.30 (7.5)	0.73 (18.5)	0.35 (9)	0.44 (0.2)
50	1.77 (45)	4.33 (110)	5.04 (128)	4.33 (110)	5.51 (140)	0.30 (7.5)	0.73 (18.5)	0.43 (11)	0.44 (0.2)
63	2.13 (54)	5.20 (132)	6.06 (154)	4.72 (120)	6.30 (160)	0.35 (9)	0.98 (25)	0.51 (13)	0.66 (0.3)
80	2.76 (70)	6.10 (155)	7.09 (180)	5.51 (140)	7.09 (180)	0.47 (12)	1.12 (28.5)	0.55 (14)	0.88 (0.4)

Dimensions in inch (mm)

Actuators

LINTRA® Rodless cylinders

C/46000B, C/46100B, C/46200B

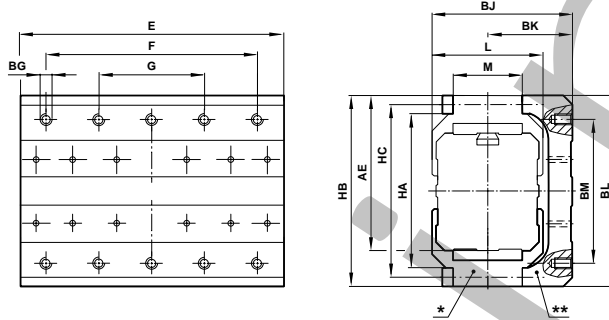
Internal. external and precision roller guided

Double acting

Ø 16 ... 80 mm



Secondary carriage – W
Side mounting plate – UW



* Secondary carriage – W
**Side mounting plate – UW

Ø	AE	BG	BJ	BK	BL	BM	E	F	G	HA	HB	HC	L	M	W lb(kg)	UW lb(kg)
16	1.50 (38)	-	-	-	-	-	3.15 (80)	-	-	-	1.93 (49)	-	-	0.71 (18)	0.09 (0.04)	-
20	2.32 (59)	M5x10 deep	2.13 (54)	1.30 (33)	3.07 (78)	2.17 (55)	4.33 (110)	-	1.57 (40)	2.52 (64)	3.11 (79)	2.52 (64)	1.65 (42)	1.06 (27)	0.42 (0.19)	0.55 (0.25)
25	2.66 (67.5)	M5x10 deep	2.48 (63)	1.46 (37)	3.39 (86)	2.56 (65)	5.12 (130)	3.15 (80)	1.77 (45)	3.03 (77)	3.43 (87)	3.03 (77)	2.05 (52)	1.26 (32)	0.73 (0.27)	0.73 (0.33)
32	3.23 (82)	M5x12 deep	3.03 (77)	1.77 (45)	4.06 (103)	3.15 (80)	6.30 (160)	3.54 (90)	2.36 (60)	3.70 (94)	4.09 (104)	3.70 (94)	2.52 (64)	1.77 (45)	1.10 (0.50)	1.10 (0.50)
40	3.84 (97.5)	M6x12 deep	3.86 (98)	2.30 (58.5)	4.69 (119)	3.54 (90)	8.46 (215)	4.72 (120)	3.15 (80)	4.33 (110)	4.72 (120)	4.33 (110)	3.11 (79)	1.77 (45)	1.43 (0.65)	2.38 (1.08)
50	4.61 (117)	M6x15 deep	4.63 (117.5)	2.81 (71.5)	5.63 (143)	4.72 (120)	9.84 (250)	6.30 (160)	3.74 (95)	5.16 (131)	5.67 (144)	5.16 (131)	3.62 (92)	1.97 (50)	2.43 (1.10)	4.08 (1.85)
63	5.39 (137)	M8x20 deep	5.49 (139.5)	3.33 (84.5)	6.61 (168)	5.51 (140)	12.60 (320)	7.48 (190)	4.72 (120)	6.02 (153)	6.65 (169)	6.06 (154)	4.33 (110)	1.97 (50)	4.20 (1.90)	7.62 (3.46)
80	6.50 (165)	-	-	-	-	-	15.35 (390)	9.45 (240)	-	-	7.87 (200)	-	-	1.97 (50)	5.51 (2.50)	-

Dimensions in inch (mm)

Weights of Cylinders lbs. (kg)

Model	C/46000B	C/46100B	C/46200B	C/46000B/L3	C/46000B/L4	Weight per inch of Stroke
16	0.35 (0.16)	0.40 (0.18)	-	-	-	0.07 (0.03)
20	1.10 (0.50)	1.32 (0.60)	-	-	-	0.09 (0.04)
25	1.76 (0.80)	1.98 (0.90)	3.75 (1.7)	3.53 (1.6)	4.19 (1.9)	0.11 (0.05)
32	3.53 (1.60)	3.75 (1.70)	6.84 (3.1)	5.95 (2.7)	6.84 (3.1)	0.20 (0.09)
40	5.95 (2.70)	6.39 (2.90)	11.03 (5.0)	9.92 (4.5)	11.47 (5.2)	0.29 (0.13)
50	10.58 (4.80)	10.80 (4.90)	20.07 (9.1)	16.10 (7.3)	19.62 (8.9)	0.42 (0.19)
63	15.88 (7.20)	16.98 (7.70)	30.65 (13.9)	25.36 (11.5)	27.34 (12.4)	0.55 (0.25)
80	29.11 (13.20)	29.55 (13.40)	-	-	-	0.84 (0.38)

Mountings

	C	S*	UV*	V	W***	UW ***
16	QM/46016/21	QM/46016/37	QM/46016/34	QM/46016/32	QM/46116/35	-
20	QM/46020/21	QM/46020/37	QM/46020/34	QM/46020/32	QM/46120/35	QM/46120/36
25	QM/46025/21	QM/46025/37	QM/46025/34	QM/46025/32	QM/46125/35	QM/46125/36
32	QM/46032/21	QM/46032/37	QM/46032/34	QM/46032/32	QM/46132/35	QM/46132/36
40	QM/46040/21	QM/46032/37	QM/46040/34	QM/46040/32	QM/46140/35	QM/46140/36
50	QM/46050/21	QM/46050/37	QM/46050/34	QM/46050/32	QM/46150/35	QM/46150/36
63	QM/46063/21	QM/46050/37	QM/46063/34	QM/46063/32	QM/46163/35	QM/46163/36
80	QM/46080/21	QM/46080/37	QM/46080/34	QM/46080/32	QM/46180/35	-

* Suitable for internally guided models only. ** Insert stroke length (mm). *** Suitable for external guided models only.

Actuators

LINTRA® Spindle

M/49000, M/49100, M/49200, M/49800

Internal, external, precision roller and heavy duty guided

Ø 25 to 63 mm



- High forces
- Precise positioning
- High repeatability
- Constant, defined high and low speed operation

Proven LINTRA® guiding systems

Interchangeable with LINTRA® pneumatic cylinders series M/46000

Technical data

Operation:

Electric spindle drive

Operating temperature:

-4°F to 176°F (-20° to +80°C) max.

Consult our Technical Service for use below 35°F (+2°C)

Cylinder diameters:

Ø 25, 32, 40, 50, 63 mm

Strokes:

Ø 25 mm: 1250 mm max.

Ø 32, 40, 50, 63 mm: 5000 mm max.

Speed:

8 ft/s (2.5 m/s) max.

Forces:

112 to 1349 lb force (500 to 6000 N)

Repeatability:

+/- .002" (0.05 mm) (Single nut)

+/- .0004" (0.01 mm) (Double nut)

Materials

End covers, yoke, carriage, cover and barrel: anodised aluminum

Cover strip: polyamide

Options selector

M/49★★★★/★★/★★★/★★★★

Guiding system	Substitute	Ball screw-sizes (mm)	Strokes (mm)
Internal	0	Ø 25	max. 1250
External adjustable	1	Ø 32, 40, 50, 63	max. 5000
Precision roller	Substitute	Lead screw-sizes (mm)	Strokes (mm)
Precision roller	2	Ø 25, 32	max. 2700
Heavy duty	8	Ø 40, 50, 63	max. 2500
Cylinder diameters (mm)	Substitute	Heavy duty -sizes (mm)	Strokes (mm)
25	25	Ø 40 - Ball screw type	max. 4000
32	32	Ø 40 - Lead screw type	max. 2500
40	40		
50	50		
63	63		
Spindle types	Substitute	Number of spindle supports	
Ball screw	B	0, 2, 4, 6	
Lead screw	L		
		Thread pitch (mm)	
		02 to 50	
		Spindle nuts	Substitute
		Single nut (standard)	S
		Double nut (on request)	D

Inductive proximity sensors



Model	Voltage V d.c.	Current max.	Temperature °C	LED	Output	Cable length	Cable type
SPC/008001/2	10 ... 30	200 mA	-30 ... +70	●	Normally closed	2 m	PVC 3x0,14
SPC/008002/2	10 ... 30	200 mA	-30 ... +70	●	Normally open	2 m	PVC 3x0,14

For information on sensors (technical data, cable material, dimensions, etc.) please consult our Technical Service


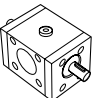
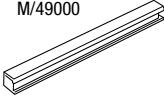

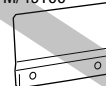

LINTRA Spindle

M/49000, M/49100, M/49200, M/49800

Internal, external, precision roller and heavy duty guided

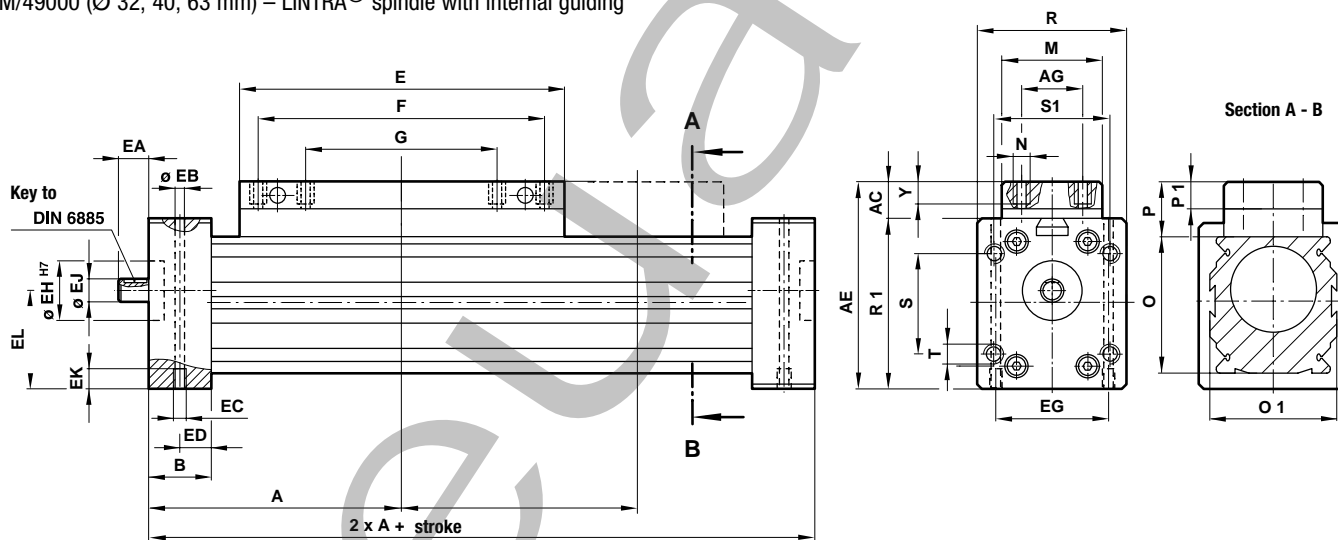
Ø 25 to 63 mm

Mountings

Ø	V	Bevel gear	Sensor bracket	Sensor activator	Sensor activator	Sensor activator
			M/49000 	M/49000 	M/49100 	M/49200 
25	QM/46025/32	SPC/Q008003/20	SPC/Q008003/22	-	SPC/Q008009/21	SPC/Q008014/21
32	QM/46032/32	On request	SPC/Q008004/22	SPC/Q008004/21	SPC/Q008010/21	SPC/Q008015/21
40	QM/46040/32	SPC/Q008005/20	SPC/Q008004/22	SPC/Q008005/21	SPC/Q008011/21	SPC/Q008016/21
50	QM/46050/32	SPC/Q008006/20	SPC/Q008004/22	-	SPC/Q008012/21	SPC/Q008017/21
63	QM/46063/32	SPC/Q008007/20	SPC/Q008004/22	SPC/Q008007/21	SPC/Q008013/21	SPC/Q008018/21

Motor adaptors for motor couplings and motors available on request

M/49000 (Ø 32, 40, 63 mm) – LINTRA® spindle with internal guiding



Ø	A	AC	AE	AG	B	E	EA	EB	EC	ED	EF	EG	EH	EJ	EK	F	G	M
25	-	-	-	20	23	180	20	5.6	M6	11.5	4	35	22	9	12	90	45	-
32	120	16	76	25	27	160	20	5.6	M6	13.5	4	45	28	10	12	120	60	45
40	150	15	90	25	30	215	25	6.8	M8	15	3	52	38	12	12	160	80	45
50	-	-	-	25	35	250	32	8.5	M10	17.5	5	64	47	17	20	190	95	-
63	215	20	125	25	40	320	40	8.5	M10	20	4	75	52	20	20	240	120	50

Ø	N	O	O1	P	P1	R	R1	S	S1	T	W	X	Y	Z	kg at 0 mm	kg per 100 mm
25	M5	40	40	-	-	48	48	22	38	M5x13 deep	33	28	7	17	1.8	0.27
32	M5	52	52	20	10	60	60	27.5	47.6	M6x15 deep	40	34.5	8	20	2.5	0.47
40	M6	65	65	20	10	75	75	50.9	50.9	M8x20 deep	50	43.5	8	25	3.4	0.70
50	M8	80	80	-	-	90	90	62.2	62.2	M8x25 deep	60	53.5	11	30	6.1	1.18
63	M8	95	95	25	14	105	105	74.25	74.25	M10x25 deep	70	61.5	11	35	10.5	1.6

Attention: when using spindle supports (SA) the total length of the spindle actuator is increased by 40 mm per two SAs.

Dimensions in inch (mm)

M/49100 (Ø25,32,40,50,63mm) - LINTRA® spindle with external guiding

M/49200 (Ø25,32,40,50,63mm) - LINTRA® spindle with precision roller guiding

M/49800 (Ø40mm) - LINTRA® spindle with heavy duty guiding

Technical information on request