

Air line equipment

# R30M Series Manifold Regulator

8 mm and 10 mm Port Sizes

**Push-in fittings in ports. No need for threaded connectors and fittings**

**Push to lock adjusting knob with tamper resistant accessory**

**Integral base mounting**

**Water or compressed air only**

## Technical data

Fluid:

Compressed air or water

Maximum pressure:

150 psig (10 bar)

Operating temperature\*:

23° to 104°F (-5° to 40°C)

\* Air supply must be dry enough to avoid ice formation at temperatures below 35°F (2°C).

Gauge port:

(can be used as additional outlet port) 10 mm OD tube with 10 mm OD tube main

ports: 8 mm OD tube with 8 mm OD tube main ports

Two inlet ports: 10 mm OD tube or 8 mm o/d tube

One outlet port: 10 mm OD tube with 10 mm OD tube inlet

8 mm OD tube with 8 mm OD tube inlet

Materials:

Body: Acetal

Bonnet: Acetal

Valve: Brass/nitrile

Elastomers: Nitrile

Valve seat: Acetal



## Ordering Information.

Models listed include 10 mm push-in fittings, knob adjustment, relieving diaphragm, 0 to 70 psig (0 to 4.8 bar) outlet pressure adjustment range\* with gauge, with porting plug.

Port	Model	Flow† scfm (dm <sup>3</sup> /s)	Weight lb (kg)
8 mm	R30M 8DK RGG	17 (8)	0.22 (0.10)
10 mm	R30M ADK RGG	17 (8)	0.22 (0.10)

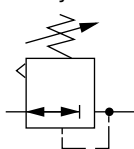
† Typical flow with 150 psig (10 bar) inlet pressure, 90 psig (6.3 bar) set pressure and a 15 psig (1 bar) drop from set.

## Alternative Models

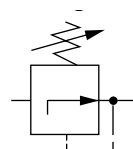
Port Size	Substitute	Gauge	Substitute
8 mm	8	With	G
10 mm	A	Without	N
Push-In Form	Substitute	Outlet Pressure Adjustment Ranges*	Substitute
Metric	D	0 to 70 psig (0 to 4.8 bar)	G
		5 to 100 psig (0.3 to 7 bar)	K
Adjustment	Substitute	Type	Substitute
Knob	K	Relieving	R
		Non relieving	N

\* Outlet pressure can be adjusted to pressures in excess of, and less than, those specified. Do not use these units to control pressures outside of the specified ranges.

## ISO Symbols



Relieving

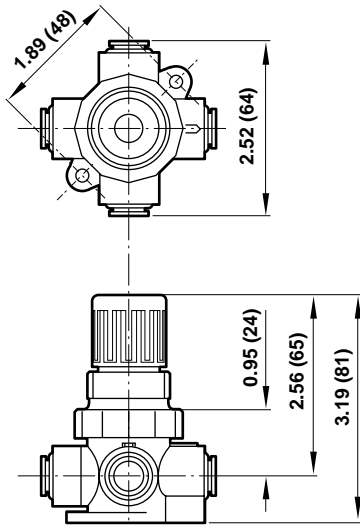


Non relieving

# R30M Series Manifold Regulator

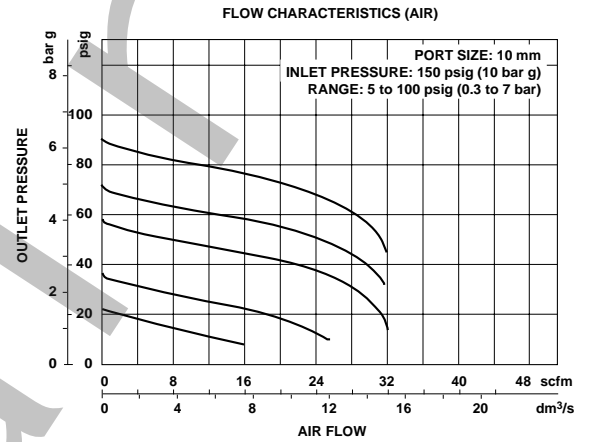
8 mm and 10 mm Port Sizes

Panel mounting hole diameter: 1.19" (30 mm)  
Maximum panel thickness: 0.25" (6 mm)

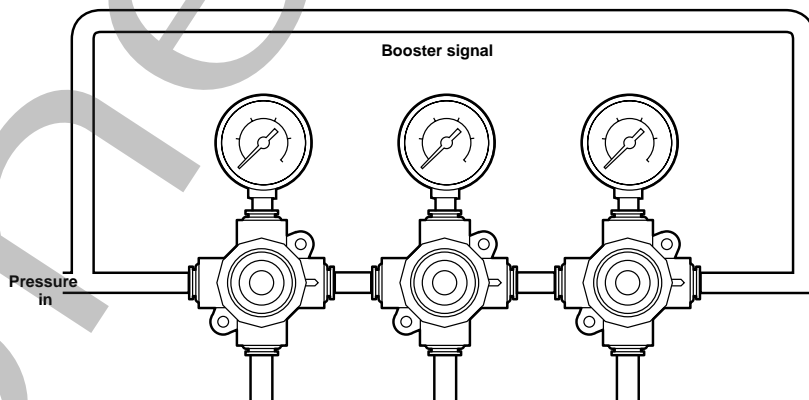


Dimensions in inches (mm)

## Typical Performance Characteristics



## Typical Manifold Regulator Application



# R72M Excelon® 72 Manifold Regulator

1/4", 3/8" Port Sizes

Excelon® design allows in-line or modular installation

Manifold typically up to six regulators without booster signal

Balanced valve design for optimum pressure control

Push to lock adjusting knob with tamper resistant accessory

Modular installations with Excelon® 72, 73, and 74 series can be made to suit particular applications

## Technical data

Fluid:

Compressed air

Maximum pressure:

290 psig (20 bar)

Operating temperature\*:

-30° to 150°F (-34° to 65°C)

\* Air supply must be dry enough to avoid ice formation at temperatures below 35°F (2°C).

Two inlet ports:

1/4" or 3/8" PTF

1/4" or 3/8" ISO Rc

1/4" or 3/8" ISO G

One outlet port:

1/4" PTF with PTF inlet ports

1/4" ISO Rc with ISO Rc inlet ports

1/4" ISO Rc with ISO G inlet ports

One gauge port:

1/8" PTF with PTF inlet ports

1/8" ISO Rc with ISO Rc inlet ports

1/8" ISO Rc with ISO G inlet ports

Materials

Body: Zinc

Bonnet: Acetal

Elastomers: Nitrile

Bottom plug: Acetal



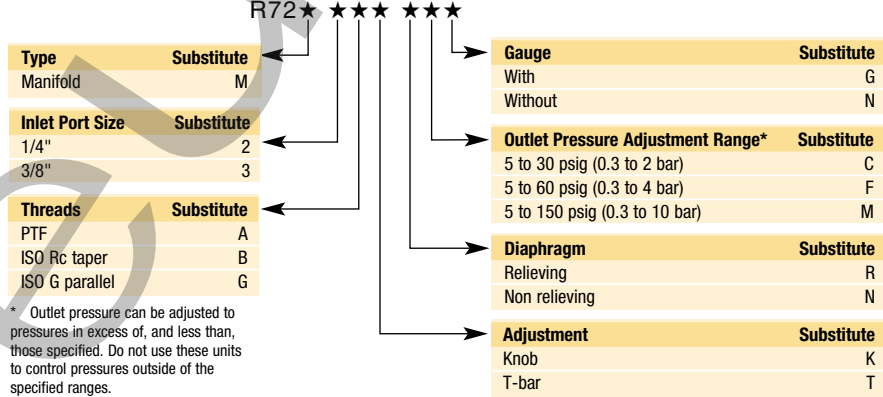
## Ordering Information.

Models listed include PTF threads, knob adjustment, relieving diaphragm, 5 to 150 psig (0.3 to 10 bar) outlet pressure adjustment range\* with gauge.

Inlet Port (2)	Outlet Port (1)	Model	Flow† scfm (dm3/s)	Weight lb (kg)
1/4"	1/4"	R72M 2AK RMG	83 (39)	0.79 (0.36)
3/8"	1/4"	R72M 3AK RMG	83 (39)	0.79 (0.36)

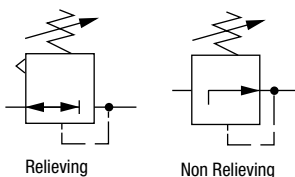
† Typical flow with 150 psig (10 bar) inlet pressure, 90 psig (6.3 bar) set pressure and a 15 psig (1 bar) drop from set.

## Alternative Models



\* Outlet pressure can be adjusted to pressures in excess of, and less than, those specified. Do not use these units to control pressures outside of the specified ranges.

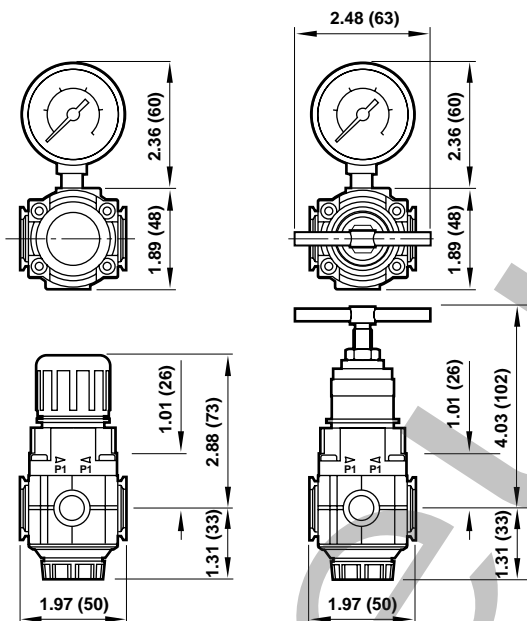
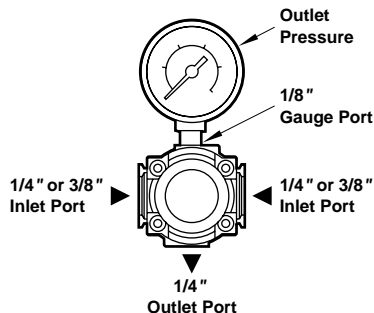
## ISO Symbols



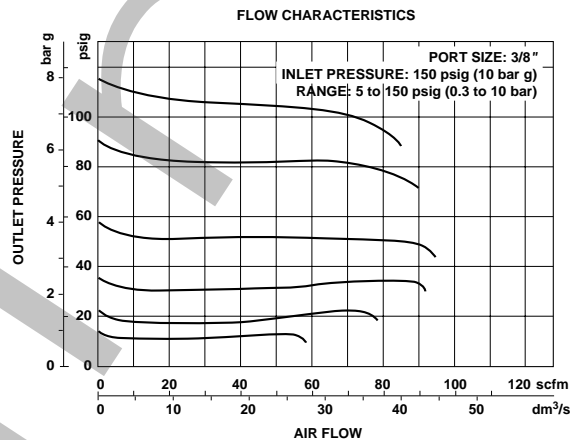
# R72M Excelon® 72 Manifold Regulator

Dimensions in inches (mm)

Panel mounting hole diameter: 1.57" (40 mm)  
Maximum panel thickness: 0.16" (4 mm)



## Typical Performance Characteristics

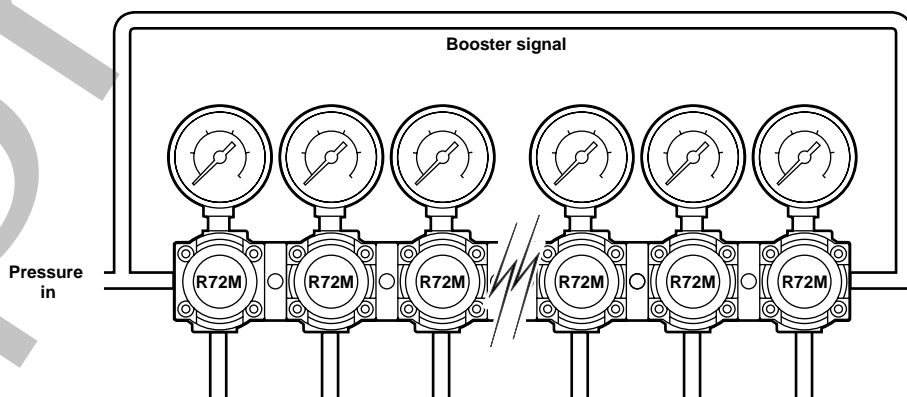


## Service Kits

Item	Type	Part Number
Service kit	Relieving	4381-500
	Non relieving	4381-501

Service kit includes diaphragm assembly, valve assembly, valve spring and o-rings.

## Typical Manifold Regulator Application



ALE-55