

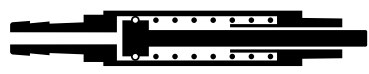
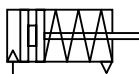
Actuators

RM/59100/C

Miniature Roundline cylinders

Single acting, spring return

Ø 2.5 & 4 mm



Ideal for very light load applications such as function testing mobile phones and keyboards

Low friction characteristics mean high speeds

No fittings required - all types feature one integral push on barbed connector

Long service life and corrosion resistant materials mean low cost of ownership

Technical data

Medium:

Compressed air, filtered, lubricated or non-lubricated

Operating pressure:

50.75 to 101.5 psig
(3.5 to 7 bar)

Operating temperature:

32°F to 140°F (0°C to 60°C)

* Air supply must be dry enough to avoid ice formation at temperatures below 35°F (2°C)

Cylinder diameters:

2.5 and 4 mm

Strokes:

5, 10 mm - Ø 2.5 mm

5, 10, 15, 20 mm - Ø 4 mm

Materials

Barrel: stainless steel

End caps: aluminum alloy

Piston rod: stainless steel

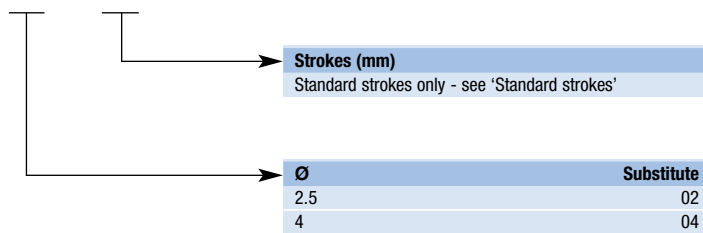
Elastomers: nitrile

Standard strokes

Cylinder Ø mm	Strokes (mm)			
	5	10	15	20
2.5	•	•		
4	•	•	•	•

Options selector

RM/591**/C/**



Actuator selection

To order a basic 2.5 mm diameter cylinder, sprung in with a 10mm stroke quote: **RM/59102/C/10**

RM/59100/C

Miniature Roundline cylinders

Single acting

Ø 2.5 & 4 mm

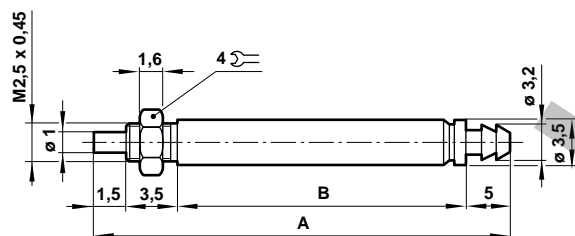
Theoretical forces / Air consumption / Weight of cylinders

Ø mm	Theoretical forces N at 6 bar		Air consumption l/cm at 6 bar		Weight kg by stroke length			
	Outstroke	F1	Instroke	Outstroke	5 mm	10 mm	15 mm	20 mm
2.5	2.9	0.7	0.001	0.001	0.002	0.002	-	-
4	7.6	1.2	0.003	0.003	0.003	0.004	0.005	0.006

F1 = Return force

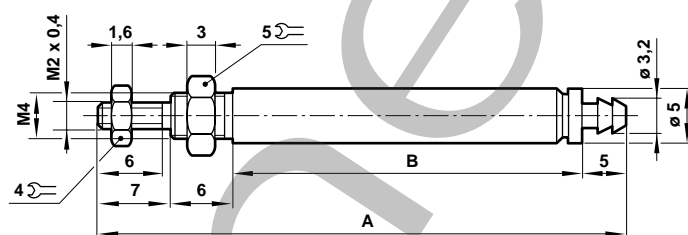
Basic dimensions in mm

RM/59102/C



	Ø	A	B
RM/59102/C/5	2.5	26.5	16.5
RM/59102/C/10	2.5	35.5	25.5
RM/59104/C/5	4	37	19
RM/59104/C/10	4	46	28
RM/59104/C/15	4	55	37
RM/59104/C/20	4	64	46

RM/59104/C



Note: push-on connector is suitable for 4mm O/D, 2.5 mm I/D polyurethane tubing