

Fittings

Quietaire heavy duty mufflers

MA and MB Series

1/8" to 2" BSPT, BSPP or PTF

Reduce the noise levels of pneumatic equipment.

Prevent open line exhaust dangers.

Corrosion resistant.

High flow capacity with low back pressure.

Brass mesh screen and aluminum construction provide improved flow, longer life and cleanable element.

Prevent metal chips, abrasive grits, dust and other contaminants from entering open exhaust ports.

Technical data

Medium:

Compressed air, filtered, lubricated and non-lubricated

Inert gases

Operation:

Exhaust silencer

Mounting:

Directly in the exhaust port
Maximum Pressure: 300 psig

(20.7 bar)

Maximum temperature: 176°F

(80°C)

Consult our Technical Service for use below 2°C

Materials

Element: Brass wire

Base: Aluminum

Shell: Aluminum

Alternative models

M/S & C/S range of porous plastic silencers.

T40 series of Quietaire sintered bronze silencers



Male thread

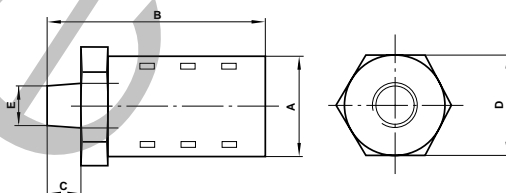
| Model | PTF | BSPT | Port size | Flow factor Cv*/C** | oz. |
|--------|--------|--------|-------------|---------------------|-----|
| MB001A | MB001B | 1/8" | 1.3 / 5.3 | 1.05 | |
| MB002A | MB002B | 1/4" | 2.3 / 9.4 | 1.05 | |
| MBP03A | MBP03B | 3/8" | 2.9 / 11.8 | 1.05 | |
| MB003A | MB003B | 3/8" | 4.9 / 20.0 | 3.53 | |
| MB004A | MB004B | 1/2" | 6.8 / 27.7 | 3.17 | |
| MBP06A | MBP06B | 3/4" | 7.2 / 29.4 | 3.17 | |
| MB006A | MB006B | 3/4" | 14.8 / 60.4 | 15.9 | |
| MB008A | MB008B | 1" | 18.0 / 73.4 | 14.0 | |
| MBP10A | MBP10B | 1 1/4" | 23.6 / 96.3 | 14.0 | |

*Cv measured in US/gall/min **C measured in dm³/(s.bar)

Female thread

| Model | PTF | BSPT | BSPP | Port size | Flow factor Cv*/C** | kg |
|--------|--------|--------|-------------|------------|---------------------|----|
| MA001 | MA001B | 1/8" | 0.8 / 3.26 | 1.05 | | |
| MA002 | MA002B | 1/4" | 2.4 / 9.79 | 1.05 | | |
| MA003 | MA003B | 3/8" | 5.7 / 23.3 | 3.53 | | |
| MA004 | MA004B | 1/2" | 6.9 / 28.1 | 3.17 | | |
| MA006 | MA006B | 3/4" | 18.0 / 73.4 | 15.9 | | |
| MA008 | MA008B | 1" | 20 / 81.6 | 14.0 | | |
| MA010 | MA010C | MA010C | 1-1/4" | 42 / 171.4 | 21.9 | |
| MA012 | MA012C | MA012C | 1-1/2" | 39 / 159.1 | 21.2 | |
| MA016A | MA016C | MA016C | 2" | 59 / 241.0 | 26.8 | |

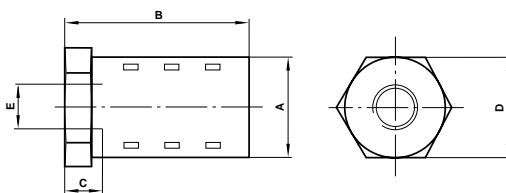
*Cv measured in US/gall/min **C measured in dm³/(s.bar)



Male thread

| A | B | C | D | E* | Model |
|------|------|------|------|--------|-------|
| 0.83 | 2.01 | 0.35 | 0.81 | 1/8" | MB001 |
| 0.83 | 2.17 | 0.51 | 0.81 | 1/4" | MB002 |
| 0.83 | 2.17 | 0.51 | 0.81 | 3/8" | MBP03 |
| 1.26 | 3.46 | 0.51 | 1.25 | 3/8" | MB003 |
| 1.26 | 3.62 | 0.67 | 1.25 | 1/2" | MB004 |
| 1.26 | 3.62 | 0.67 | 1.25 | 3/4" | MBP06 |
| 2.01 | 5.28 | 0.79 | 2.00 | 3/4" | MB006 |
| 2.01 | 5.43 | 0.91 | 2.00 | 1" | MB008 |
| 2.01 | 5.51 | 1.02 | 2.00 | 1 1/4" | MBP10 |

* For MB***B Rc (BSPT) according to BS21 and ISO - 7/1
For MB***A PTF-SAE SHORT according to ANSI-B1.20.1x



Female thread

| A | B | C | D | E* | Model |
|------|------|------|------|--------|--------|
| 0.83 | 1.65 | 0.24 | 0.81 | 1/8" | MA001 |
| 0.83 | 1.77 | 0.35 | 0.81 | 1/4" | MA002 |
| 1.26 | 3.07 | 0.35 | 1.25 | 3/8" | MA003 |
| 1.26 | 3.27 | 0.47 | 1.25 | 1/2" | MA004 |
| 2.01 | 4.65 | 0.47 | 2.00 | 3/4" | MA006 |
| 2.01 | 4.65 | 0.59 | 2.00 | 1" | MA008 |
| 2.52 | 5.67 | 0.59 | 2.50 | 1 1/4" | MA010 |
| 2.52 | 5.67 | 0.59 | 2.50 | 1 1/2" | MA012 |
| 2.99 | 6.61 | 0.63 | 3.00 | 2" | MA016A |

* For MA***B Rc (BSPT) according to BS21 and ISO - 7/1
For MA***A PTF-SAE SHORT according to ANSI-B1.20.1
For MA***C G (BSPP) according to BS2779 and ISO-228/x

Additional ranges

Sintered bronze mufflers

| Size | NPT model | Cv |
|-------|-----------|------|
| 10-32 | MS000A | |
| 1/8 | MS001A | 0.7 |
| 1/4 | MS002A | 1.4 |
| 3/8 | MS003A | 1.9 |
| 1/2 | MS004A | 3.8 |
| 3/4 | MS006A | 6.5 |
| 1 | MS008A | 10.5 |
| 1-1/4 | MS010A | 11.8 |
| 1-1/2 | MS012A | 18.3 |

| Size | BSPT model | Size | BSPP model | Cv |
|------|------------|------|------------|------|
| | | M5 | T40M0500 | 0.2 |
| 1/8" | T40 B1800 | 1/8 | T40C1800 | 0.54 |
| 1/4" | T40 B2800 | 1/4 | T40C2800 | 1.6 |
| 3/8" | T40 B3800 | 3/8 | T40C3800 | 3.5 |
| 1/2" | T40 B4800 | 1/2 | T40C4800 | 5.1 |
| 3/4" | T40 B6800 | 3/4 | T40C6800 | 9.0 |
| 1" | T40 B8800 | 1 | T40C8800 | 11.6 |

Reduce the noise levels of pneumatic equipment.
Compact and efficient.
Screw directly into the exhaust port.
Prevent the ingress of dirt.



Porous plastic mufflers

| Size | NPT Model | BSPP Model | Cv |
|------|-----------|------------|------|
| M5 | | M/S0 | 0.31 |
| 1/8 | C/S1 | M/S1 | 0.98 |
| 1/4 | C/S2 | M/S2 | 1.93 |
| 3/8 | C/S3 | M/S3 | 3.75 |
| 1/2 | C/S4 | M/S4 | |
| 3/4 | C/S6 | M/S6 | 7.79 |
| 1 | C/S8 | M/S8 | 9.63 |

Reduce the noise levels of pneumatic equipment.
Compact, efficient and lightweight.
Screw directly into the exhaust port.
Prevent the ingress of dirt.
Low cost.



Stem silencers

| Size | NPT Model |
|-------|-----------|
| 5/32" | T45Y0002 |
| 1/4" | T45Y0004 |
| 3/8" | T45Y0006 |
| 6mm | T45P0006 |
| 8mm | T45P0008 |
| 10mm | T45P0010 |
| 12mm | T45P0012 |

Reduce the noise levels of pneumatic equipment.
Compact, efficient and lightweight.
Insert directly into Push-in fitting exhaust port.
Prevent the ingress of dirt.
Low cost.



Quietaire coalescing muffler

| Port Size NPT | Part Number | Flow Factor Cv |
|---------------|-------------|----------------|
| 1/2 | MC004A | 5.2 |
| 3/4 | MC006A | 9.2 |
| 1 | MC008A | 15.7 |

Easily replaceable cartridge element
Removal of oil mist from exhaust air provides cleaner work environment.
Rugged, corrosion resistant construction



Fittings

Additional ranges

Sintered bronze speed control

| Port Size NPT | Part Number | Flow Factor Cv |
|---------------|-------------|----------------|
| 1/2 | MQ004A | 2.5 |
| 3/4 | MQ006A | 2.5 |
| 1 | MQ008A | 7.7 |
| 1-1/4 | MQ010A | 7.7 |

Easily replaceable cartridge element
Removal of oil mist from exhaust air provides cleaner work environment.
Rugged, corrosion resistant construction



Plastic speed control

| Port Size NPT | Part Number |
|---------------|-------------|
| 1/8 | MM001A |
| 1/4 | MM002A |
| 3/8 | MM003A |
| 1/2 | MM004A |
| 3/4 | MM006A |
| 1 | MM008A |

Cleanable 40-micron sintered bronze diffuser element.
Corrosion resistant construction.
Adjustment screw to control rate of exhaust air flow.
Adjustment screw facilitates a smooth, steady change to flow when turned.



High performance flow control Quietaire muffler

| Port Size | Part Number | | Max. Flow Factor Cv |
|-----------|-------------|-----------------|---------------------|
| | NPT | Metric or ISO G | |
| M5 | - | T20M0500 | 0.07 |
| 1/8 | T20A1800 | T20C1800 | 0.4 |
| 1/4 | T20A2800 | T20C2800 | 0.8 |
| 3/8 | T20A3800 | T20C3800 | 1.7 |
| 1/2 | T20A4800 | T20C4800 | 2.4 |

Cleanable 40-micron sintered bronze diffuser element.
Corrosion resistant construction.
Adjustment screw to control rate of exhaust air flow.
Adjustment screw facilitates a smooth, steady change to flow when turned.



Breather vents

| Port Size NPT | Part Number | Flow Factor Cv |
|---------------|-------------|----------------|
| 1/8 | MV001A | 0.1 |
| 1/4 | MV002A | 0.1 |
| 3/8 | MV003A | 0.3 |
| 1/2 | MV004A | 0.5 |
| 3/4 | MV006A | 1.3 |
| 1 | MV008A | 1.6 |
| 1-1/4 | MV010A | 4.2 |
| 1-1/2 | MV012A | 5.2 |

| Port Size ISO G | Part Number | Flow Factor Cv |
|-----------------|-------------|----------------|
| 1/8 | M/1511 | 0.45 |
| 1/4 | M/1512 | 1.1 |
| 1/2 | M/1514 | 1.5 |
| 3/4 | M/1516 | 3.9 |
| 1 | M/1518 | 5.5 |

Prevent the ingress of dirt with minimal flow restriction.
Robust and compact.
Screw directly into the exhaust port.

