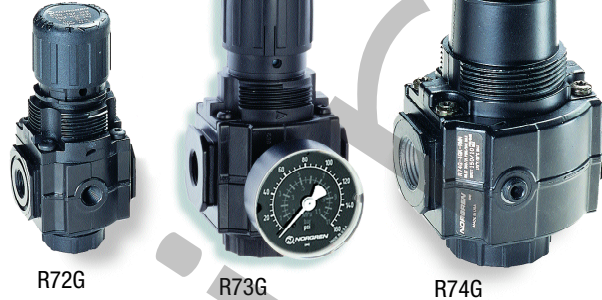


Air line equipment

Excelon[®] modular system

R72G, R73G, R74G Pressure regulators



Excelon[®] design allows in-line or modular installation
 Full flow gauge ports
 Balanced valve design minimizes effect of variation in the inlet pressure on the outlet pressure
 Standard relieving models allow reduction of downstream pressure when the system is dead-ended

Optional reverse flow models available for use downstream of directional control valves
Technical data

Fluid:
 Compressed air
 Maximum pressure:
 300 psig (20 bar)

Operating temperature*:
 -30° to 175°F (-34° to 80°C)

*Air supply must be dry enough to avoid ice formation at temperatures below 35°F (2°C).

Typical flow with 150 psig (10 bar) inlet pressure, 90 psig (6.3 bar) set pressure and 15 psig (1 bar) droop from set: 144 scfm (68 dm³/s)

Materials

R72G
 Body: zinc
 Bonnet: acetal (Zinc on 250 psi model)
 Valve: brass
 Elastomers: nitrile
 Bottom plug: acetal

R73G, R74G
 Body: aluminum
 Bonnet: aluminum or zinc
 Elastomers: nitrile
 Bottom plug: acetal

Ordering Information

Models listed include uni-directional flow, PTF threads, knob adjustment, relieving diaphragm, 5 to 150 psig (0.3 to 10 bar) outlet pressure adjustment range*, with gauge.

Port Size	Model	Flow† scfm (dm ³ /s)	Weight lb (kg)
1/4"	R72G 2AK RMG	70 (33)	0.79 (0.36)
3/8"	R72G 3AK RMG	70 (33)	0.79 (0.36)
1/4"	R73G 2AK RMG	91 (43)	1.36 (0.6)
3/8"	R73G 3AK RMG	144 (68)	1.36 (0.6)
1/2"	R73G 4AK RMG	144 (68)	1.36 (0.6)
3/8"	R74G 3AK RMG	208 (98)	1.80 (0.82)
1/2"	R74G 4AK RMG	220 (105)	1.77 (0.80)
3/4"	R74G 6AK RMG	220 (105)	1.73 (0.78)

† Typical flow with 150 psig (10 bar) inlet pressure, 90 psig (6.3 bar) set pressure and a 15 psig (1 bar) droop from set.

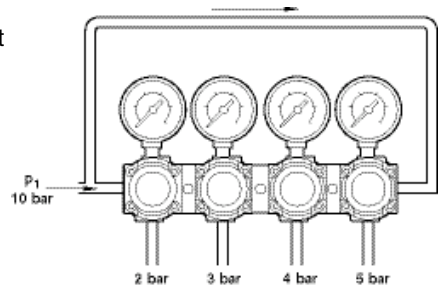
Options selector

Series	Substitute	Gauge	Substitute
72	2	With	G
73	3	Without	N
74	4		
Flow type	Substitute	Outlet pressure adjustment range*	Substitute
Uni-directional	G	5 to 30 psig (72)	C
Reverse	R	5 to 60 psig	F
Manifold (72)	M	5 to 150 psig	M
		10 to 250 psig** (73, 74)	S
Port size	Substitute	Diaphragm	Substitute
1/4" (72, 73)	2	Relieving	R
3/8" (72, 73, 74)	3	Non relieving	N
1/2" (73, 74)	4		
3/4" (74)	6	Adjustment	Substitute
Threads	Substitute	Knob	K
PTF	A	T-bar	T
ISO G parallel	G		

*Outlet pressure can be adjusted to pressures in excess of, and less than, those specified. Do not use these units to control pressures outside of the specified ranges.
 **Units with 250 psig outlet pressure range are available only with the T-bar adjustment, substitute T at the 7th position and S at the 9th position.

These products allow inlet pressure to pass directly through the body. The outlet port is at right angles to the inlet. This then allows units to be 'Quikclamped' together in a bank meaning numerous regulated pressures can be obtained from a single supply – see illustration.

R72M pressure regulators are ideal for control cabinet installations where neat, compact assemblies are required. See website for additional information.



Excelon® modular system

R72G, R73G, R74G Pressure regulators

Dimensions in inches.

Accessories*

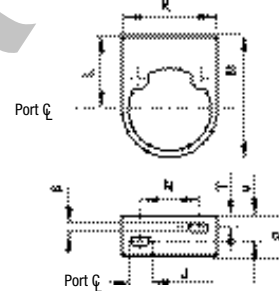
	Wall mounting bracket**	Neck mounting bracket	Gauge 0 ... 160 psig	Panel nut	Tamper resistant cover and seal wire	Pipe adapters (quantity of 1) (NPT)	Quikclamp®	Quikclamp® and wall bracket
R72G	4224-50	74316-50	18-013-212	4248-89	4255-51	4215-02 (1/4)	4214-51	4214-52
R72M			18-013-273			4215-03 (3/8)		4213-89*
R73G	4424-50	4461-50	18-013-209	5191-88	4455-51	4315-01 (1/4)	4314-51	4314-52
						4315-02 (3/8)		4313-50*
						4315-03 (1/2)		
						4315-04 (3/4)		
R74G	4324-50	4368-51	18-013-209	4348-89	4355-51	4315-02 (3/8)	4314-51	4314-52
						4315-03 (1/2)		4313-50*
						4315-04 (3/4)		

* For additional options see website. ** Bracket only.

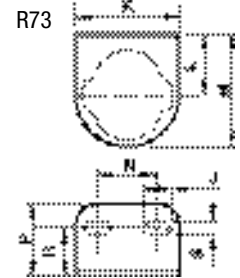
Service Kit		
Item	Type	Part Number
72G	Relieving	4381-500
72G	Non-Relieving	4381-501
73G	Relieving	4381-600
73G	Non-Relieving	4381-601
74G	Relieving	4381-700
74G	Non-Relieving	4381-701

Neck mounting brackets

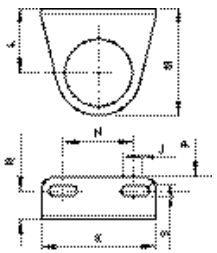
R72



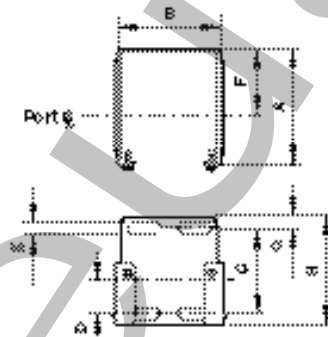
R73



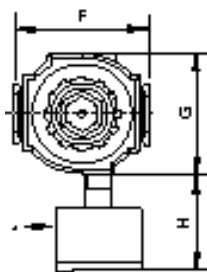
R74



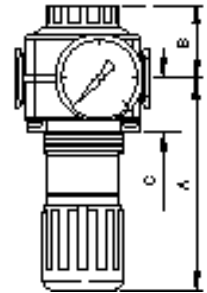
Mounting bracket



Series	A	B	C	D	E	F	G	H
72	2.36	1.65	1.54	0.73	0.16	1.50	0.24	2.01
73	2.64	2.36	1.89	0.75	0.28	1.50	0.24	2.40
74	3.11	2.72	1.97	0.79	0.20	2.01	0.24	2.40



Optional gauge



	A	B	C	F	G	H	Panel Ø	Panel depth
72	2.87	1.30	1.02	1.97	1.89	1.38	1.57	0 to .16
73	3.78	1.54	1.22	2.68	2.44	2.20	1.89	.07 to .25
74	5.00	1.69	1.22	3.15	2.91	2.20	2.05	.07 to .25

Series	J	K	L	M	N	P	R	S	T	V
72	0.31	1.93	1.50	2.50	1.18	0.94	-	0.17	0.31	0.59
73	0.67	2.52	1.50	2.76	1.50	1.50	0.98	0.28	-	-
74	0.94	3.50	2.05	3.39	2.20	1.38	0.91	0.28	-	-

