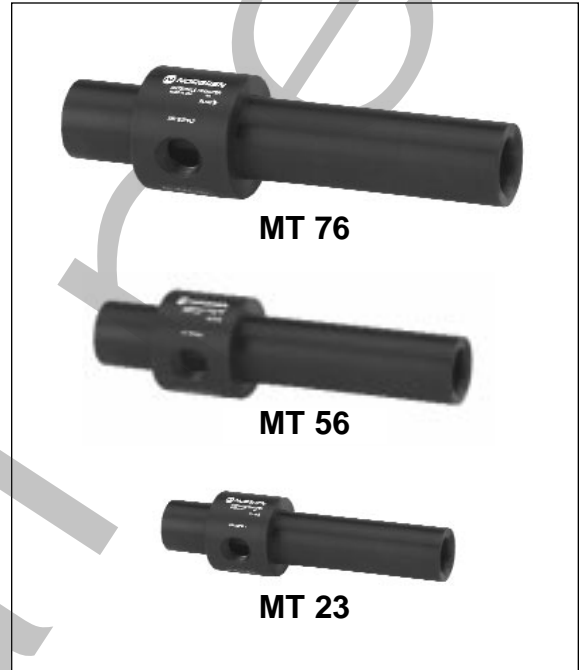


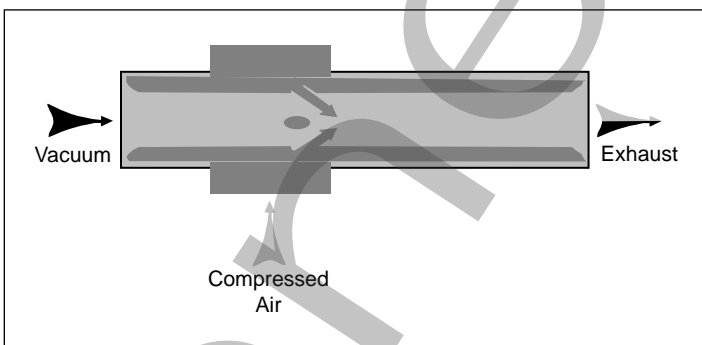
- **MT Series provides a reliable and cost effective method of in-line transfer of complex shapes and bulk materials.**
- **Creates instantaneous vacuum flow and high air velocity.**
- **Straight through, smooth bore design.**
- **Compact design facilitates placement close to the work area for maximum efficiency and ease of installation.**
- **MT pumps are available in 15 standard models with inside diameters from 1/8" to 3".**
- **Modified and custom engineered units available.**



Principles of Operation

Compressed air is fed into an exterior annular ring that has a number of orifices leading into the main tube of a transducer. As the compressed air exits from the orifices, its velocity increases to supersonic speed. The air forced into the center of the tube rotates with a twisting motion similar to a worm screw. This cyclonic flow creates a powerful vacuum capable of drawing materials into, and through the transducer.

As a vacuum source, the MT series are capable of rapid evacuation of a large volume of air to a low vacuum level.



Ordering Information

Select an MT pump based on the following:

- Inside diameter
- Vacuum flow
- Vacuum force
- Air Consumption
- Contact factory for custom pumps

Typical Applications

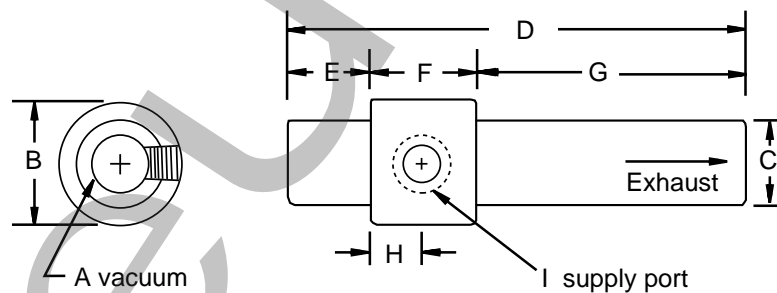
- Unloading vibrator feeders
- Reloading hoppers with plastic regrind
- Transferring of engine valves in grinding operation
- Chip removal in drilling operation
- Transfer power detergent and caustic chemicals
- Convey peanut husks
- Salvage removal in trimming operation
- Mandrel collection system



Performance Data

Model No.	I.D.	Air Velocity (ft/sec)	Vacuum Flow (scfm)	Vacuum Level (" Hg)	Air Consumption	
					@ 40 psi	@80 psi
MT 13	0.13 (3)	585	3	8	1.1	2
MT 23	0.25 (6)	490	10	8	3.1	6
MT 33	0.38 (10)	328	15	6	3.5	6
MT 36	0.38 (10)	393	18	8	5.8	10
MT 53	0.50 (13)	306	25	3	5.2	9
MT 56	0.50 (13)	362	30	10	14	24
MT 73	0.75 (14)	272	50	4.3	14	24
MT 76	0.75 (14)	326	60	8	28	48
MT 103	1.0 (25)	229	75	3	14	24
MT 106	1.0 (25)	290	95	5.8	28	48
MT 153	1.50 (38)	224	165	1.3	14	24
MT 156	1.50 (38)	272	200	2.5	28	48
MT 203	2.0 (51)	183	240	0.8	14	24
MT 206	2.0 (51)	229	300	1.5	28	48
MT 306	3.0 (76)	168	375	.7	32	60

Values for velocity, vacuum flow, and vacuum level are for 80 psi input pressure



Model	Dimensions								
	I.D. A	B	C	D	E	F	G	H	(NPTF) I
MT 13	0.13 (3)	1.25 (32)	0.75 (19)	3.50 (89)	0.75 (19)	1.0 (25)	1.75 (44)	0.5 (13)	1/8
MT 23	0.25 (6)	1.25 (32)	0.75 (19)	3.50 (89)	0.75 (19)	1.0 (25)	1.75 (44)	0.5 (13)	1/8
MT 33	0.38 (10)	1.25 (32)	0.75 (19)	3.50 (89)	0.75 (19)	1.0 (25)	1.75 (44)	0.5 (13)	1/8
MT 36	0.38 (10)	1.25 (32)	0.75 (19)	3.50 (89)	0.75 (19)	1.0 (25)	1.75 (44)	0.5 (13)	1/8
MT 53	0.50 (13)	1.50 (38)	1.0 (25)	5.50 (140)	1.0 (25)	1.25 (32)	3.25 (83)	0.63 (16)	1/4
MT 56	0.50 (13)	1.50 (38)	1.0 (25)	5.50 (140)	1.0 (25)	1.25 (32)	3.25 (83)	0.63 (16)	1/4
MT 73	0.75 (19)	2.0 (51)	1.25 (32)	7.50 (191)	1.50 (38)	2.0 (51)	4.0 (102)	1.0 (25)	3/8
MT 76	0.75 (19)	2.0 (51)	1.25 (32)	7.50 (191)	1.50 (38)	2.0 (51)	4.0 (102)	1.0 (25)	3/8
MT 103	1.00 (25)	2.25 (57)	1.50 (38)	7.50 (191)	1.50 (38)	2.0 (51)	4.0 (102)	1.0 (25)	3/8
MT 106	1.00 (25)	2.25 (57)	1.50 (38)	7.50 (191)	1.50 (38)	2.0 (51)	4.0 (102)	1.0 (25)	3/8
MT 153	1.50 (38)	2.75 (70)	2.0 (51)	7.50 (191)	1.50 (38)	2.0 (51)	4.0 (102)	1.0 (25)	3/8
MT 156	1.50 (38)	2.75 (70)	2.0 (51)	7.50 (191)	1.50 (38)	2.0 (51)	4.0 (102)	1.0 (25)	3/8
MT 203	2.00 (51)	3.25 (83)	2.50 (64)	7.50 (191)	1.50 (38)	2.0 (51)	4.0 (102)	1.0 (25)	3/8
MT 206	2.00 (51)	3.25 (83)	2.50 (64)	7.50 (191)	1.50 (38)	2.0 (51)	4.0 (102)	1.0 (25)	3/8
MT 306	3.00 (76)	4.25 (108)	3.50 (89)	10.50 (267)	2.0 (51)	3.0 (76)	5.50 (140)	1.50 (38)	3/8

These products will operate with as little as 3 psi.



Accessory Selection Guide

Accessory Selection Guide										
Product	Vacuum Cups	Filter	Gauge	Sensor	Silencer AA	Silencer ST	Solenoid Valve	Switch (Mech)	Switch Solid State	Sensor Solid State
LV Series	●	●	●	●	●	●	●	●	●	●
MV Series	●	●	●	●	●	●	●	●	●	●
BV Series	●	●	●	●		●		●	●	●
RR	●	●	●	●	●	●		●	●	●
Supervac	●	●	●							●
NJ Series	●	●	●	●	●	●		1	1	1
VV Series	●		●							

1 Remote applications only

Pneumatic