

BV Series Vacuum Pumps

200, 250, 300, 350

- The BV Series offers high vacuum flow rates for rapid evacuation of large volumes of air.
- Ideal for vacuum filling operations.
- BV8200 model will power multiple vacuum cups and can handle large vacuum cups for heavy, porous objects.
- BV8250 model can be used with systems having large vacuum lines or rotary vacuum valves.
- BV8- and BV9- models are available with optional vacuum gauge (VG150).



Technical Data

Venturi-

Medium: Filtered (50 micron), unlubricated air

Operating Pressure: 80 PSI

Operating Temperature: 15°F-140°F

Operating Noise level: 72 dBA

Material: Anodized aluminum

Ordering Information

1. Body styles and venturi size have been combined for a total of 8 models.
2. Order using the following part numbers:

BV8 200M	BV9 300M
BV8 200H	BV9 300H
BV8 250M	BV9 350M
BV8 250H	BV9 350H

Mechanical and solid state vacuum sensors and switches can be factory installed upon request.

NORVAC venturi vacuum pumps are designed to operate at peak efficiency at 80 PSI. Systems requiring operation at **60 PSI** should be ordered with the **-60** at the end of the part number i.e., BV9350H**60**.



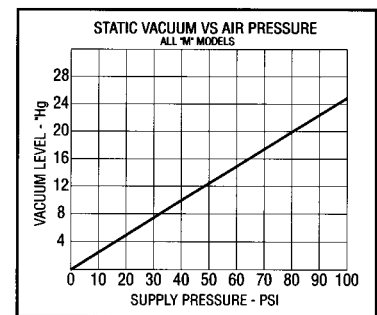
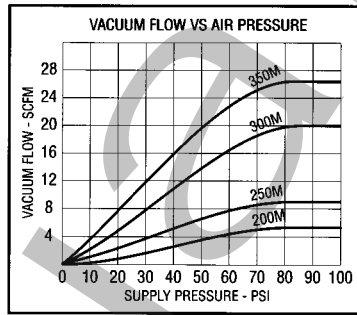
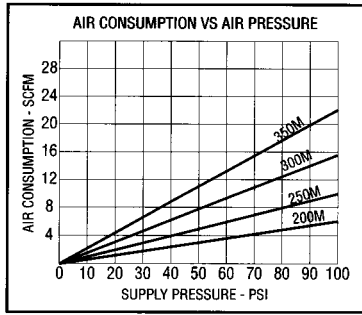
Performance Data

M Series Venturis Medium Vacuum Applications

The "M" series for "Medium" vacuum levels of up to 20" Hg for applications involving porous materials (cardboard, wood, fabric, etc.) or where leakage is present.

Model	Air Consumption (SCFM)@ 80 PSI	Vacuum Flow (scfm) vs. Vacuum Level ("Hg) @ 80 PSI							
		0"	3"	6"	9"	12"	15"	18"	20"
200M	4.80	6.00	5.30	4.90	4.00	3.50	2.50	1.10	0.00
250M	7.80	9.50	9.20	8.30	7.00	4.70	3.40	2.20	0.00
300M	12.50	20.00	19.00	16.30	13.80	8.10	5.50	3.30	0.00
350M	17.00	28.00	24.00	19.40	16.80	14.50	11.20	4.80	0.00

Model	Evacuation Time (seconds) based on 1 cu. ft. Volume ("Hg)							
	0"	3"	6"	9"	12"	15"	18"	20"
200M	0.00	0.75	1.90	3.20	5.30	8.70	17.10	42.60
250M	0.00	0.45	1.10	2.40	3.80	6.00	9.70	15.40
300M	0.00	0.00	0.00	1.10	1.80	2.70	4.60	8.70
350M	0.00	0.00	0.00	1.00	1.50	2.10	4.30	8.40

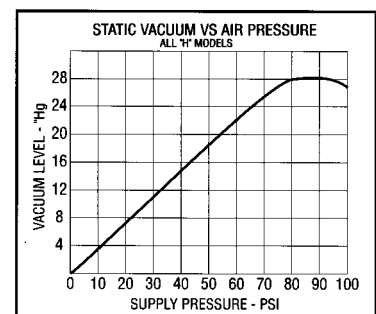
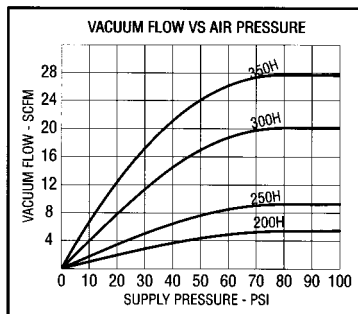
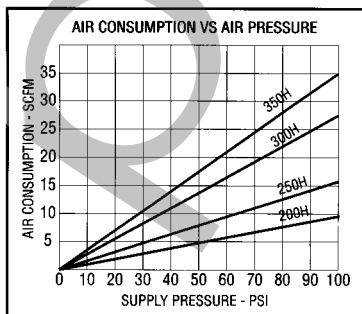


H Series Venturis High Vacuum Applications

The "H" series for "High" vacuum levels of up to 28" Hg for applications involving non-porous materials (steel, plastic, glass, etc.)

Model	Air Consumption (SCFM)@ 80 PSI	Vacuum Flow (scfm) vs. Vacuum Level ("Hg) @ 80 PSI										
		0"	3"	6"	9"	12"	15"	18"	21"	24"	27"	28"
200H	7.80	5.40	4.70	3.85	3.30	3.00	2.60	2.10	1.60	1.20	0.60	0.00
250H	12.50	9.00	8.50	7.85	7.00	6.50	5.30	3.90	2.50	1.80	0.90	0.00
300H	22.00	20.00	17.00	14.00	12.70	12.00	10.00	7.40	4.90	2.70	1.30	0.00
350H	28.00	28.00	22.00	18.70	15.90	14.50	11.80	8.10	5.70	4.50	2.25	0.00

Model	Evacuation Time (seconds) based on 1 cu. ft. Volume ("Hg)										
	0"	3"	6"	9"	12"	15"	18"	21"	24"	27"	28"
200H	0.00	1.20	2.10	3.40	5.20	7.70	11.50	20.00	33.50	62.60	98.10
250H	0.00	0.75	1.30	2.20	3.50	5.60	9.10	17.40	30.10	56.00	76.00
300H	0.00	0.00	0.80	1.20	2.00	2.80	3.90	5.90	11.10	32.70	60.00
350H	0.00	0.00	0.00	1.20	1.90	2.30	3.40	5.30	8.80	26.00	44.00

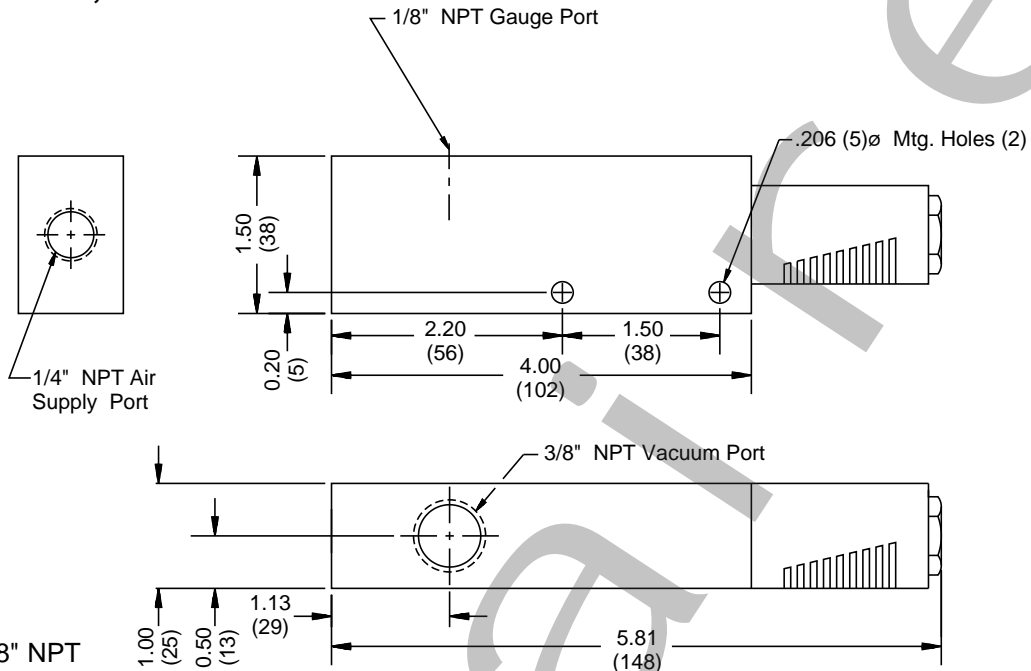




BV Series Vacuum Pumps - 200, 250, 300, 350

All Dimensions in Inches (mm)

BV8200M, H

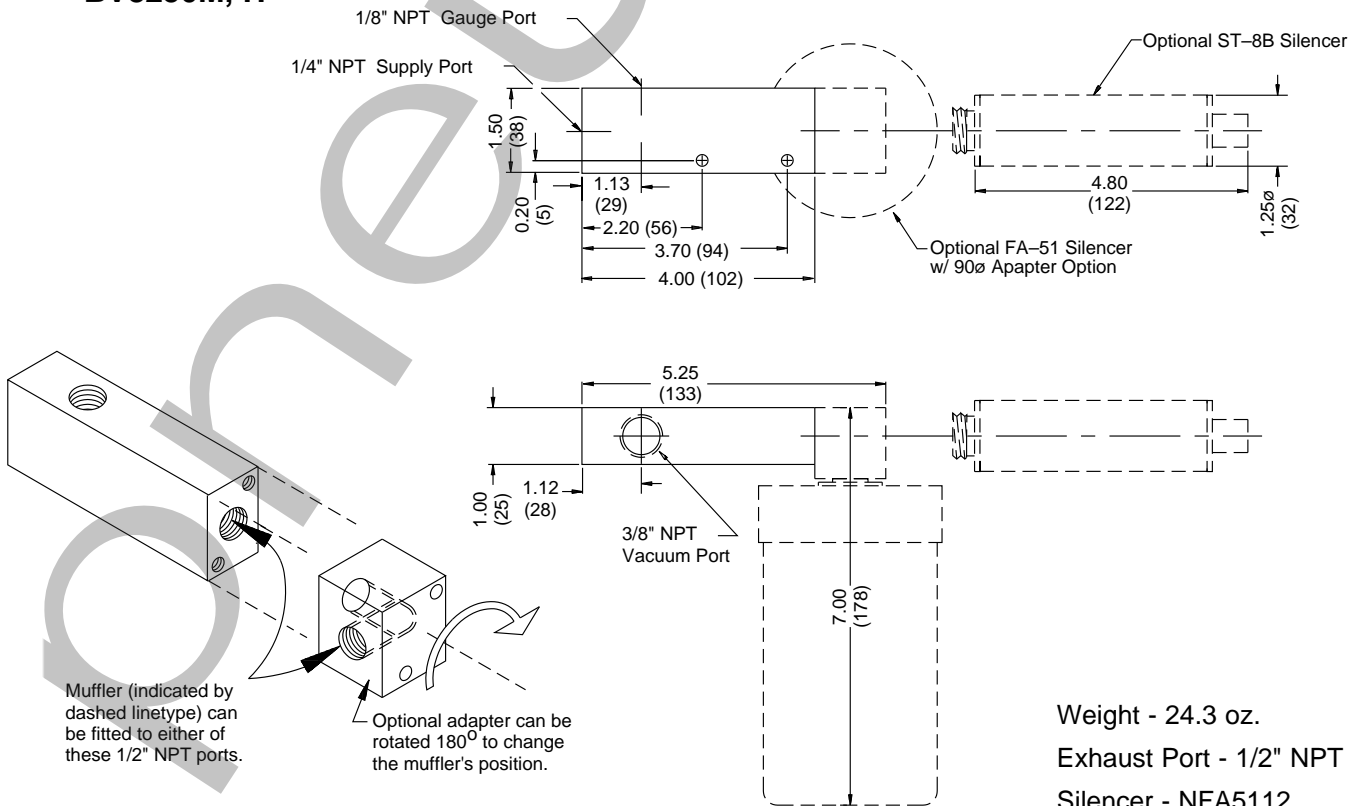


Weight - 9.4 oz.

Exhaust Port - 3/8" NPT

Silencer - NAA6

BV8250M, H



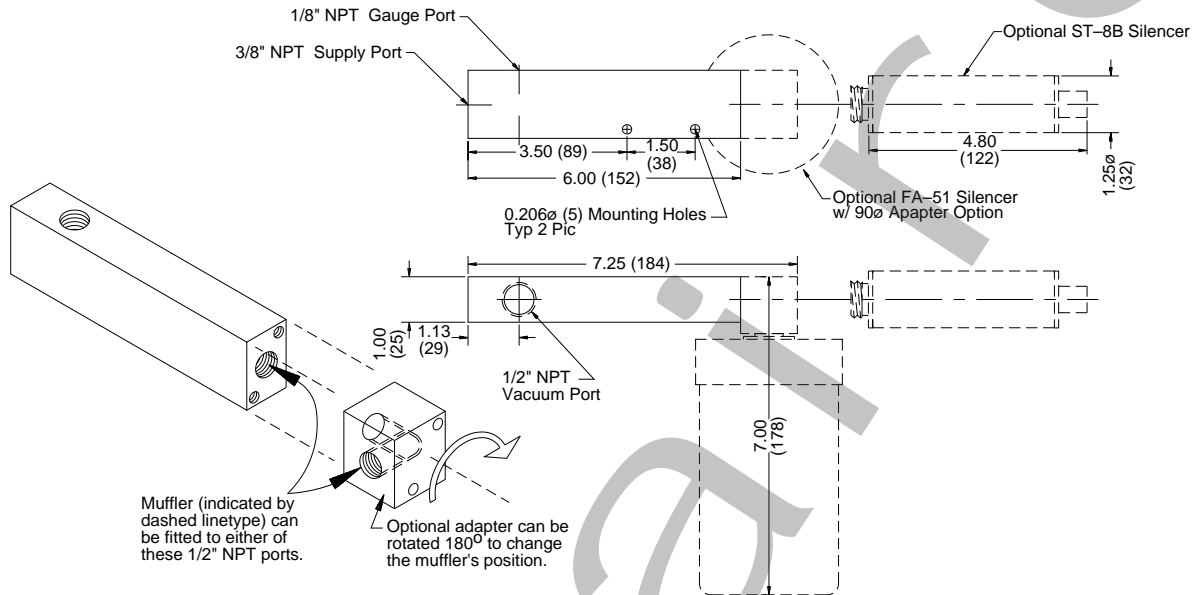
Weight - 24.3 oz.

Exhaust Port - 1/2" NPT

Silencer - NFA5112



BV9



Weight - 24.3 oz.

Exhaust Port - 1/2" NPT

Silencer - NFA5112

Prohesh