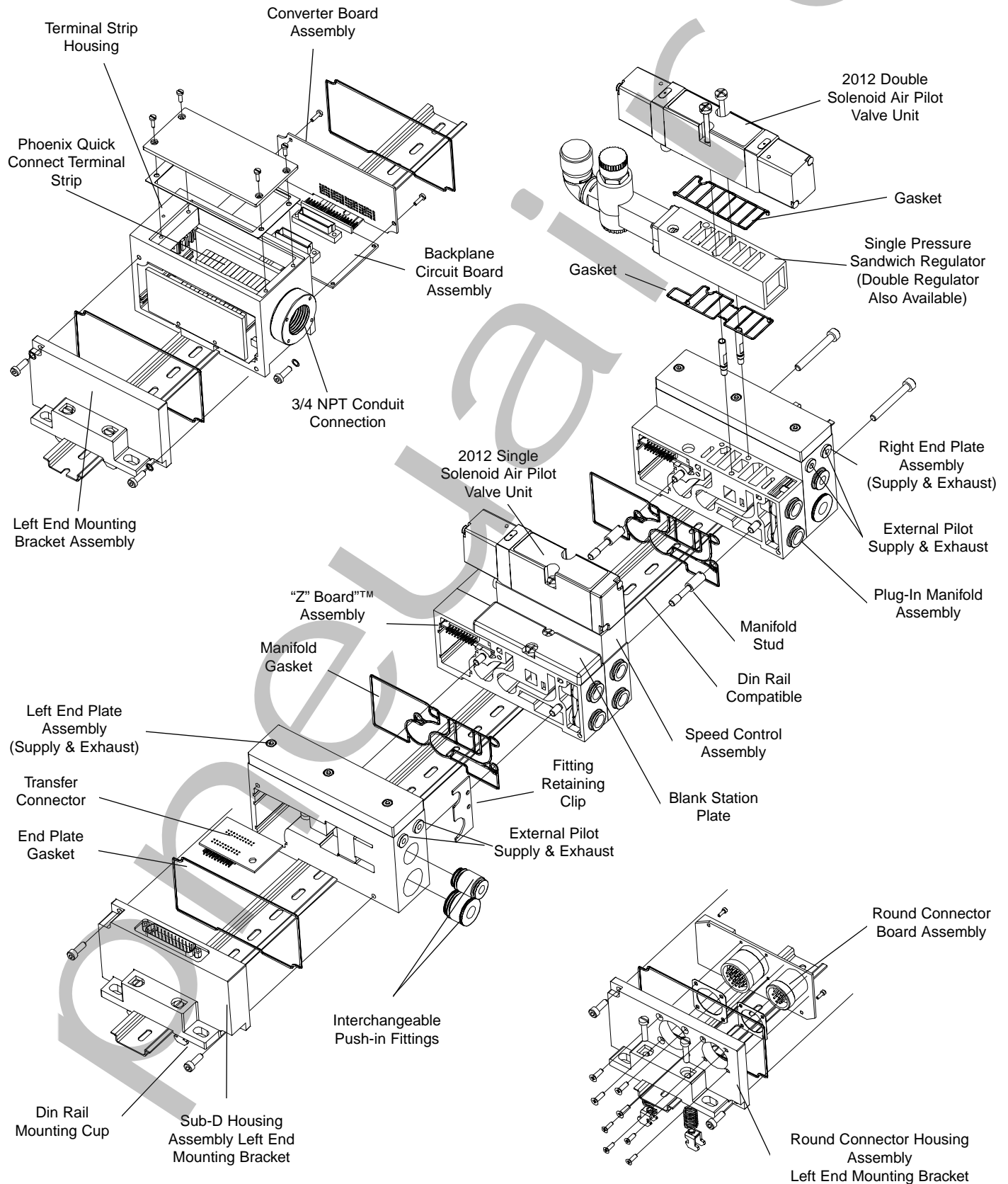


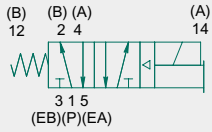
Terminal Strip, Sub-D, and Round Connector Options (exploded view)



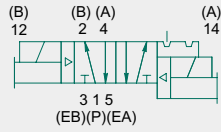


2012 Series

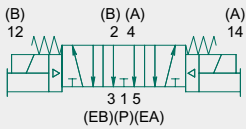
single solenoid air pilot
2 position 4-way



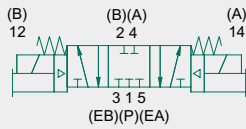
double solenoid air pilot
2 position 4-way



double solenoid air pilot
3 position 4-way
open center



double solenoid air pilot
3 position 4-way
closed center



5 Ported, 2 and 3 position, 4-way, Spool & Sleeve
Cv: 1.2

- Solenoid air pilot actuated
- Low wattage plug-in – 2.5 watt for DC application
- DC solenoids polarity insensitive with surge suppression
- Plug together circuit boards eliminate internal wiring
- Integral recessed gaskets
- Interchangeable push-in fittings to accommodate various tube sizes
- Simple conversion from internal to external pilot
- Modular plug-together Fieldbus electronics
- NEMA 4/IP65

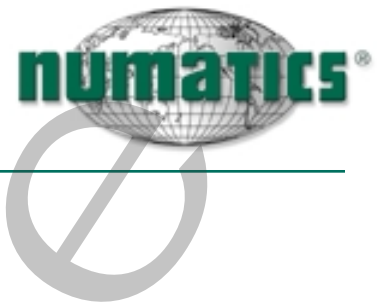


Technical Data

VALVE DATA	ENGLISH	METRIC
Cv	1.20	1.20
Flow Capacity	56 SCFM @ 80 PSIG upstream pressure to atmosphere	1180 NI/m @ 6 bar upstream to 5 bar downstream
Operating Pressure Range	28"Hg Vacuum to 150 PSIG	Vacuum to 10 bar
Pilot Pressure Range	26 to 120 PSIG	1.8 to 8.2 bar
Temperature Range (Ambient)	-10°F to + 115°F	-23° C to +46° C

Operating Data

ALL SOLENOIDS ARE CONTINUOUS DUTY RATED	24 VDC	110 - 120 VAC 50/60 Hz.		
Power (Watts)	2.5	4.2		
Holding Current (Amps.)	0.10	0.05		
RESPONSE TIME IN SECONDS	ENERGIZE	DE-ENERGIZE	ENERGIZE	DE-ENERGIZE
2-Position, Single, Spring Return	0.010	0.020	0.010	0.020
2-Position, Double, Detented	0.010	N/A	0.010	N/A
3-Position, Spring Centered	0.010	0.020	0.010	0.020



2012 Series

How to Order

Valves

122 BB 4 Z6 M L 000 61

Valve Series & Port Size

- 122* = 1/4
- 123 = 3/8
- 12H = 8mm
- 12K = 10mm

*Use for valve unit only (Mounting = 00)

Valve Type

- BA = Single Solenoid Pilot, (Spring Return) w/Flush Non-Locking Override
- BB = Double Solenoid Pilot w/Flush Non-Locking Override
- 00 = Blank Station

Function

- 4 = 2 Position, 4-way
- 5 = 3 Position, 4-way Open Center
- 6 = 3 Position, 4-way Closed Center
- P = Blank Station

Mounting

- 00 = Valve Unit only
- 3A = Individual Base, Side Ports, Individual Exhaust
- 3C = 3A w/Speed Control
- Z1 = Manifold Block w/Side and Bottom Ports, Single Solenoid Internal Circuit Board
- Z2 = Manifold Block w/Side and Bottom Ports Double Solenoid Internal Circuit Board
- Z5 = Z1 w/Speed Control
- Z6 = Z2 w/Speed Control
- R1 = Z1 w/ Ribbon Cable Connector
- R2 = Z2 w/ Ribbon Cable Connector
- R5 = Z5 w/ Ribbon Cable Connector
- R6 = Z6 w/ Ribbon Cable Connector

Voltage

- 20 = 24/50-60 VAC
- 30 = 110-120/50-60 VAC
- 60 = 12 VDC
- 61 = 24 VDC

Special Options

- 11B = Flush Locking Override
- 11M = No Override
- 56Y = 12mm Electrical Connector in Conduit Port of Base Mounting only

Port Type

- L = Push-in Fitting
- N = NPTF
- G = G Tap
- O = Valve Unit only

Wiring Option

- K = Plug-in AC w/Light
- M = Plug-in DC w/Light
- 0 = Blank Station Plate

NOTE:

Manifold assembly kit ordering information for:

- Electrical interface options *see page 42.*
- Fieldbus electronics see Electronics section.

Regulators

122 RS 3 Z1 J L 000 00

Valve Series & Port Size

- 122* = 1/4
- 123 = 3/8
- 12H = 8mm
- 12K = 10mm

*Use for regulator unit only (Mounting = 00).

Regulator Type

- RS = Single Pressure to Port 1 (P)
- RD = Dual Pressure to Ports 3 (EB) & 5 (EA)
- RC = Dual Pressure w/Non-relieving Checks
- RQ = Dual Pressure w/Relieving Checks
- RE = Dual Pressure to Ports 4 (A) & 2 (B)
- RT = 2 Pressure Selector

*For metric gauge, replace R with E in 4th digit.

Pressure Range

- 1 = 10-130 PSIG (0.7-9 bar)
- 3 = 3-30 PSIG (0.2-2 bar)
- 4 = 5-60 PSIG (0.5 - 4 bar)

Special Options

- 12H = Less gauge
- 16N = Jumper on 14 (A) End
- 16P = Jumper on 12 (B) End
- 16W = Top Facing Gauge

Port Type

- L = Push-In
- N = NPTF
- G = G Tap

Wiring Option

- J = Plug-In Receptacle Ass'y
- O = Non-Plug-In (Type RE only)

Mounting

- 00 = Regulator Unit Only
- 3A = Individual Base, Side Ports, Individual Exhaust
- 3C = 3A w/Speed Control
- R1 = Z1 w/Ribbon Cable Connector
- R2 = Z2 w/Ribbon Cable Connector
- R5 = Z5 w/Ribbon Cable Connector
- R6 = Z6 w/Ribbon Cable Connector
- Z0 = Manifold Block w/Side and Bottom Ports, Transfer Board, Used w/RE Regulators RE only (no Z-board)
- Z1 = Manifold Block w/Side and Bottom Ports, Single Solenoid Internal Circuit Board
- Z2 = Manifold Block w/Side and Bottom Ports, Double Solenoid Internal Circuit Board
- Z5 = Z1 w/Speed Control
- Z6 = Z2 w/Speed Control

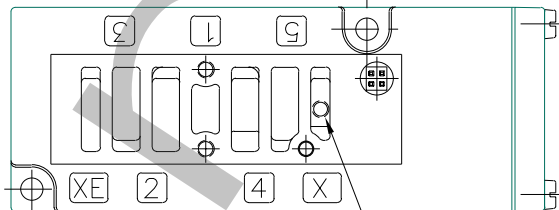
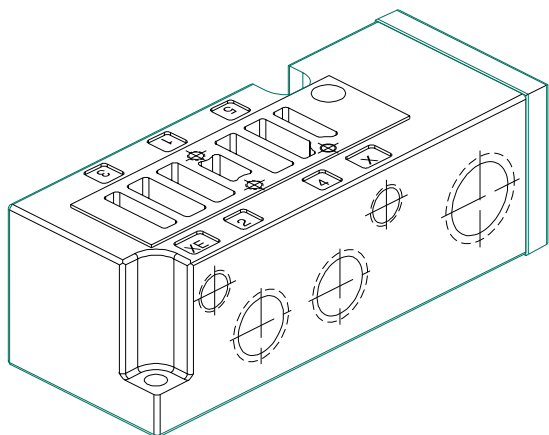


2012 Series



Individual Base Assembly Kit

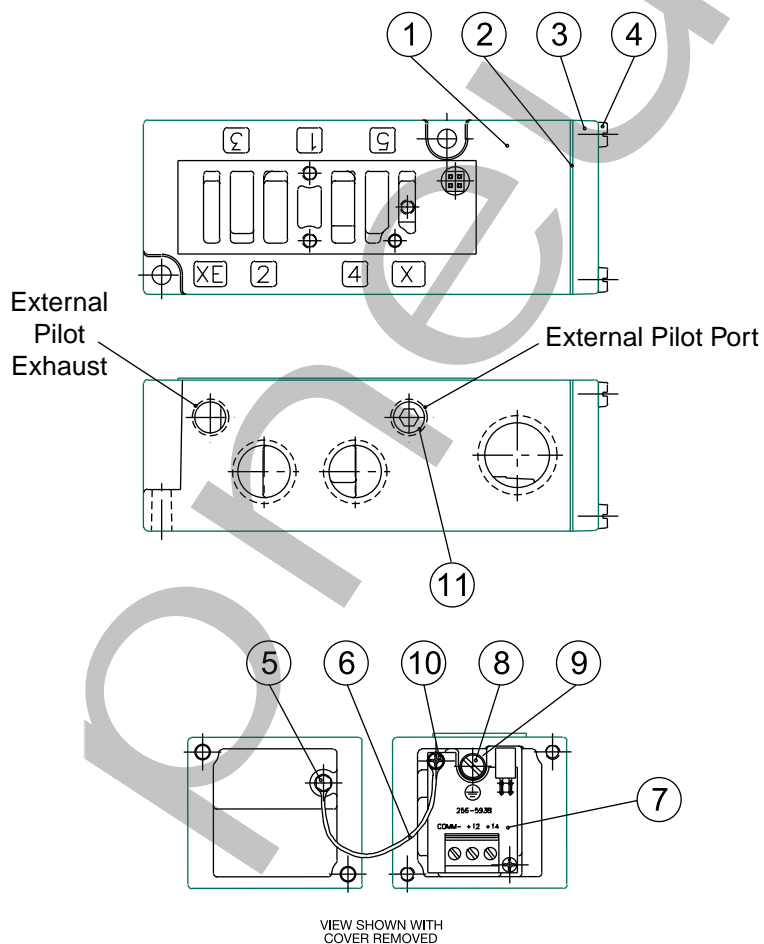
Internal/External Pilot Selection



M4 Pilot Port Location
(plug# 127-691 order separately)

PORT SIZE	PART NO.
1/4 NPTF	203-1100
3/8 NPTF	203-1101
1/4 G	203-1137
3/8 G	203-1138

Note: Base assemblies are supplied set up for internal pilot supply. To convert to external pilot supply install plug P.N. 127-691 (sold separately) in the "X" gallery as indicated above. Remove the 1/8 NPTF pipe plug from the "X" port to supply pilot pressure.

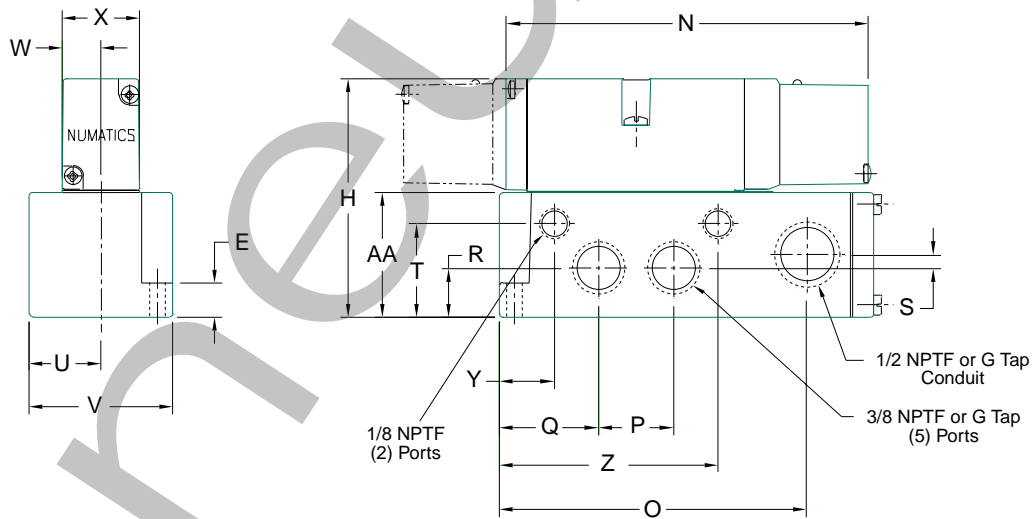
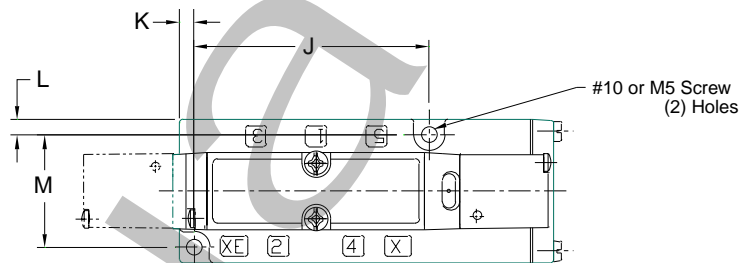
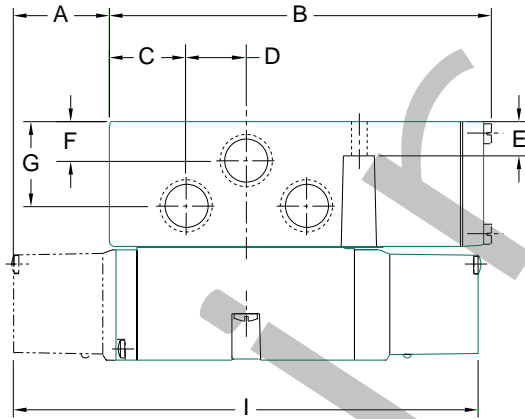


DET. NO.	NO. REQ'D	PART NAME	PART NO.
1	1	Base (not sold separately)	
2	1	Gasket	113-528
3	1	Cover	105-397
4	2	Screw	127-850
5	1	Screw	127-172
6	1	Strap	125-772
7	1	Terminal Strip Ass'y	256-593
8	1	Screw	127-176
9	1	Washer	128-162
10	2	Screw	127-318
11	1	1/8 NPTF Pipe Plug	129-100



2012 Series

Valve on Individual Base

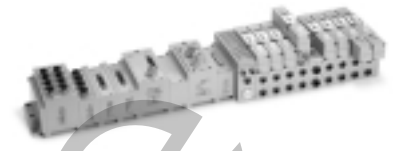


Dimensions

top dimensions = inches
bottom dimensions (in parenthesis) = millimeters

A	B	C	D	E	F	G	H	I	J	K	L	M	N	O	P
1.27	5.14	1.03	0.81	0.46	0.53	1.14	3.21	6.26	3.16	0.20	0.21	1.51	5.00	4.14	1.00
(32.3)	(130.6)	(26.3)	(20.6)	(11.7)	(13.5)	(29.0)	(81.5)	(159.0)	(80.3)	(5.1)	(5.3)	(38.4)	(127.0)	(105.2)	(25.4)

Q	R	S	T	U	V	W	X	Y	Z	AA
1.33	0.65	0.18	1.25	0.97	1.93	0.52	1.04	0.69	2.94	1.67
(33.8)	(16.5)	(4.6)	(31.8)	(24.6)	(49.0)	(13.2)	(26.4)	(17.7)	(74.7)	(42.4)



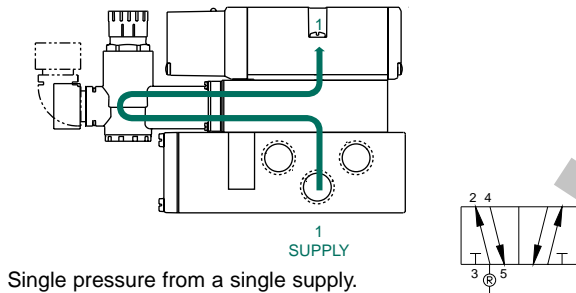
Sandwich Pressure Regulators

Types: RS / RD / RC / RQ / RE / RT

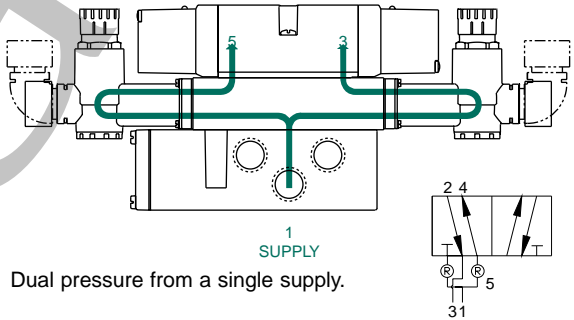
When ordering a valve plus regulator mounted on a base or manifold, list the valve unit only model number and include the mounting requirements with the regulator. Specify "Assembled."

Example orders:	Type RS	Type RD
Valve unit only:	122BA400K000030	122BB400M000061
Regulator +mounting	122RS1Z1JN00000 ASSEMBLED	122RD1Z2JN00000 ASSEMBLED

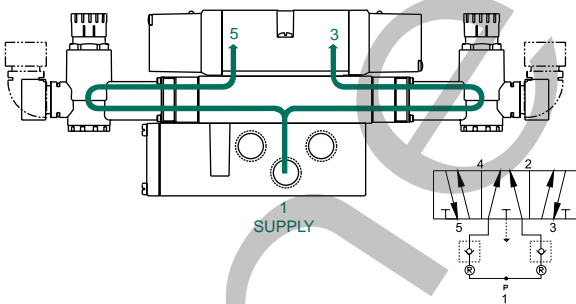
Type RS



Type RD

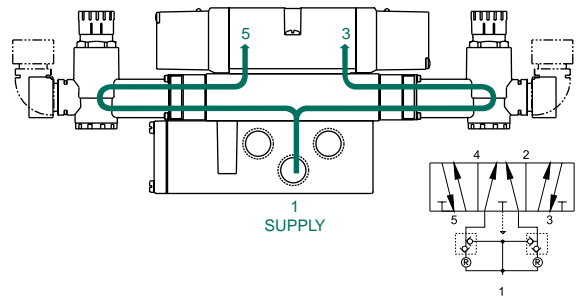


Type RC



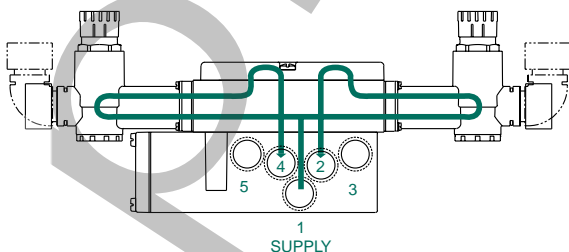
Type RC is Non-Relieving:
traps downstream pressure if upstream pressure is exhausted.

Type RQ



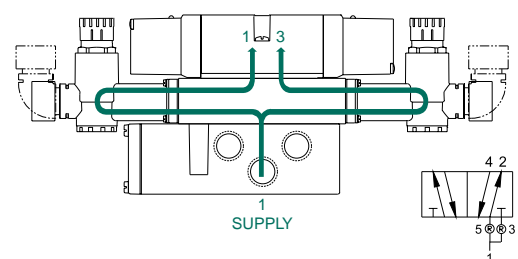
Type RQ is Relieving:
exhausts pressure in cylinder if upstream pressure is exhausted.

Type RE



External outlet regulator used with jumper plate for single or dual pressure.

Type RT

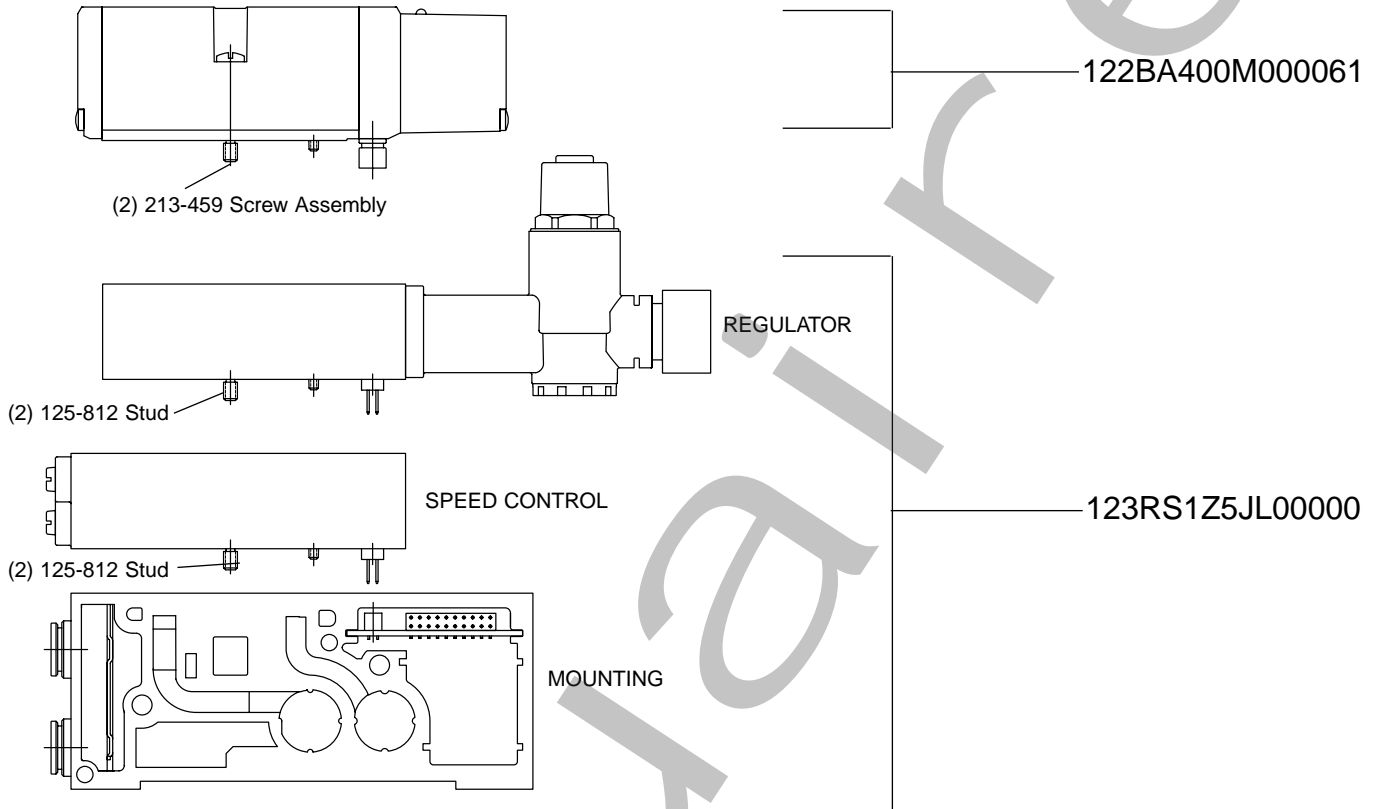


Two-pressure selector used for multi-pressure applications.



2012 Series

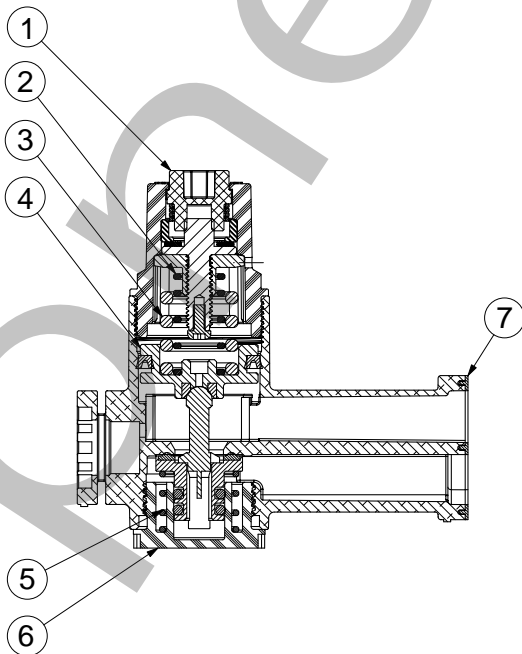
Valve Regulator / Speed Control Plug-in Assembly



Refer to *page 22* for ordering codes.

Regulator Kits and Service Parts
Regulator Service Kit 239-1393

Regulator Unit Kits
(includes regulator assembly, gaskets, screws)



PSIG	PART NO.
3-30 PSIG	239-1909
5-60 PSIG	239-1910
10-130 PSIG	239-1911

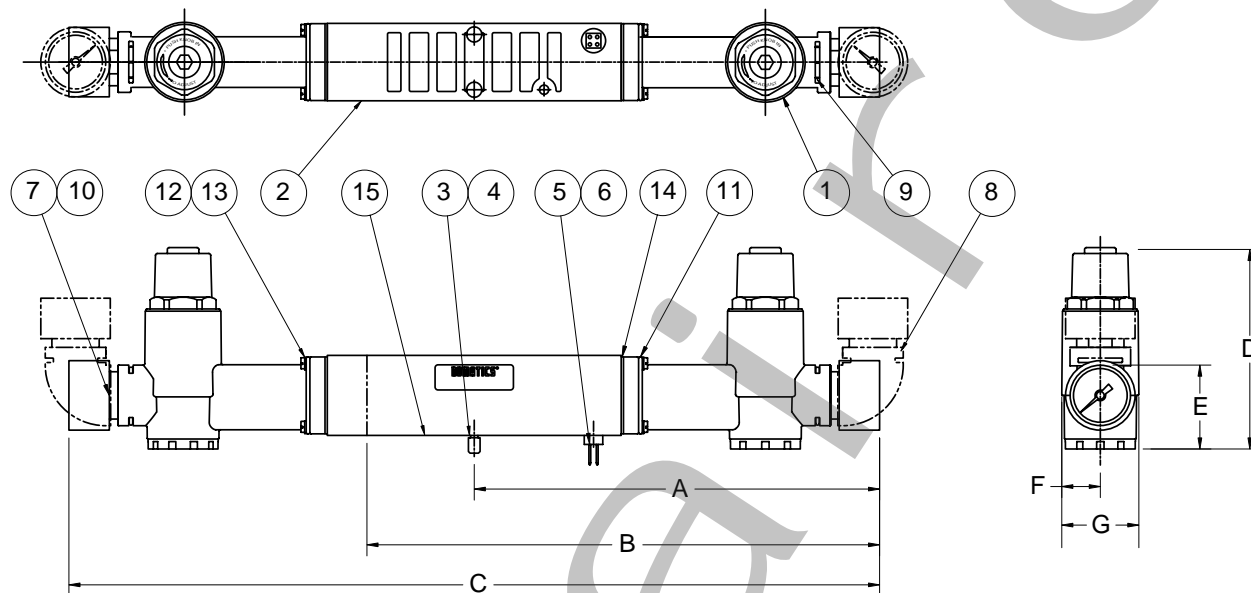
DET. NO.	NO. REQ'D	PART NAME
1	1	Bonnet
2	1	Spring
3	1	Spring
4	1	Piston Assembly
5	1	Spring
6	1	Cap
7	1	Gasket



2012 Series



Sandwich Pressure Regulator



Dimensions

top dimensions = inches
bottom dimensions (in parenthesis) = millimeters

A	B	C	D	E	F	G
5.48 (139.2)	6.94 (176.3)	10.97 (278.6)	2.7 (68.6)	1.14 (29.0)	0.52 (13.2)	1.04 (26.4)



Shown with
"16W" option
(90° elbow)

Gauge Kit

160 PSI	11 BAR MAX.	60 PSI	4 BAR MAX.
214-214	214-215	214-219	214-220

Elbow Kit

239-1217

Gauge Adaptor Kit 1/8 NPTF

239-1561

Parts List

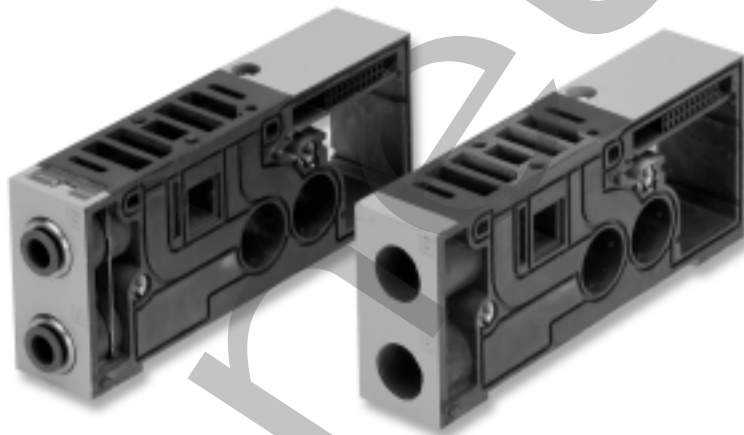
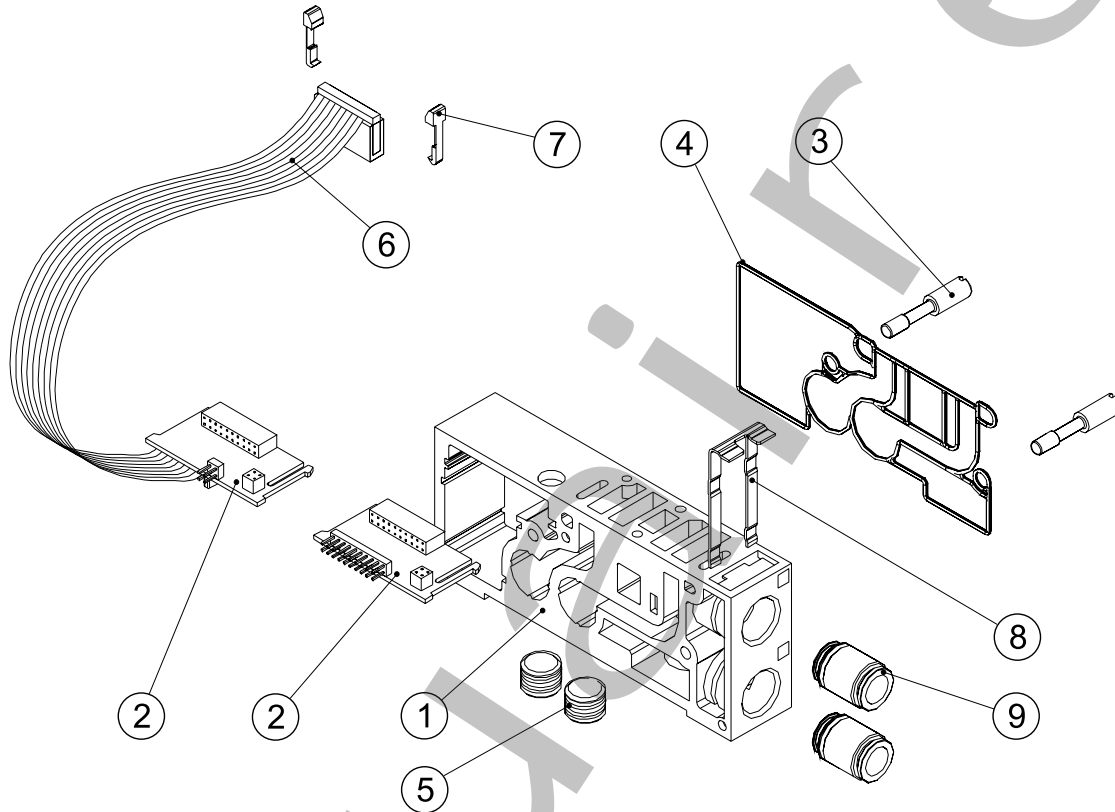
DET. NO.	NO. REQ'D	PART NAME	PART NO.
1	2*	Regulator	See p. 26
2	1	Single riser block	125-798
2	1	Double riser block	125-799
3	2	O-Ring	126-528
4	2	Stud	125-812
5	1	Screw	127-318
6	1	Plug-Assembly	230-904
7	2*	Gauge 160 PSI max.	214-212
7	2*	Gauge 11 bar max.	214-213
7	2*	Gauge 60 PSI max.	214-217
7	2*	Gauge 4 bar max.	214-218
8	2*	Elbow	134-505
9	4**	Pin	131-236
10	4**	O-Ring	126-105
12	8***	Screw	127-960
13	8***	Lockwasher	128-172
14	2*	Gasket	113-535
15	1	Gasket	113-534

* (1) Required for RS
** (2) Required for RS
*** (4) Required for RS



2012 Series

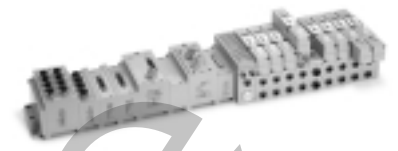
Manifold Assemblies



DET. NO.	NO REQ'D	PART NAME	PART NO.
1	1	Manifold Block (not sold separately)	
2 *	1	"Z-Board" [™]	See p. 34
3	2	Stud	125-813
4	1	Gasket	113-537
5	2	Pipe Plug, 1/4 NPTF	129-101
5	2	Pipe Plug, 1/4 G	129-161
6	1	Ribbon Cable Ass'y	230-905
7	2	Snap In Latch	140-721
8	1	Retaining Clip	125-751
9	2	Push-in Fitting	See p. 33

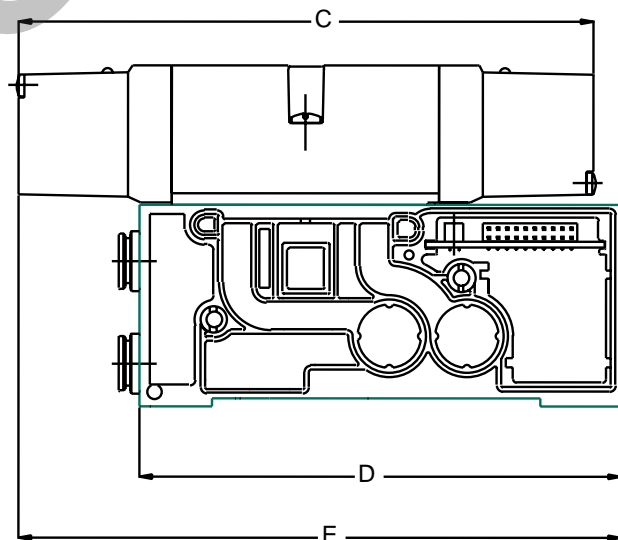
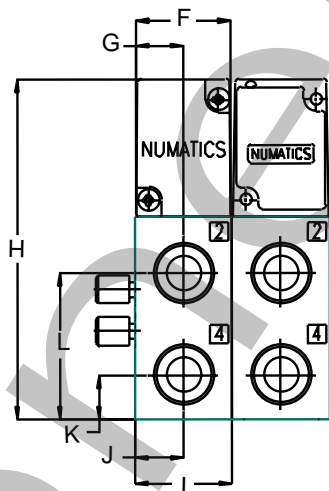
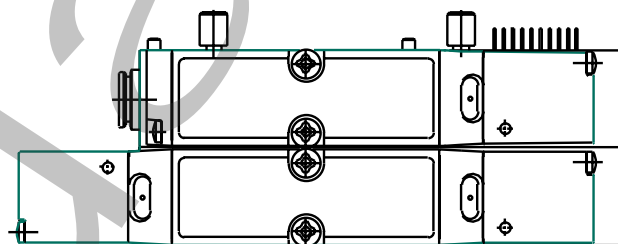
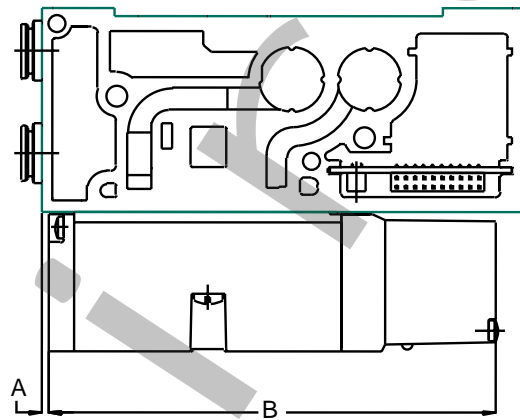
MANIFOLD ASSEMBLY KITS

	1/4 NPTF	3/8 NPTF	G 1/4	G 3/8	1/4 Push-in	3/8 Push-in	8mm Push-in	10mm Push-in
Side Cylinder Ports	1/4 NPTF	3/8 NPTF	G 1/4	G 3/8	1/4 Push-in	3/8 Push-in	8mm Push-in	10mm Push-in
Bottom Cylinder Ports	1/4 NPTF	1/4 NPTF	G 1/4	G 1/4	1/4 NPTF	1/4 NPTF	G 1/4	G 1/4
Single "Z-Board" [™]	206-1272	206-1271	206-1256	206-1255	206-1273	206-1274	206-1257	206-1258
Double "Z-Board" [™]	206-1280	206-1279	206-1264	206-1263	206-1281	206-1282	206-1265	206-1266
Single "Z-Board" [™] w/Ribbon Cable	206-1276	206-1275	206-1260	206-1259	206-1277	206-1278	206-1261	206-1262
Double "Z-Board" [™] w/Ribbon Cable	206-1284	206-1283	206-1268	206-1267	206-1285	206-1286	206-1269	206-1270



2012 Series

Valve on Manifold Block



Dimensions

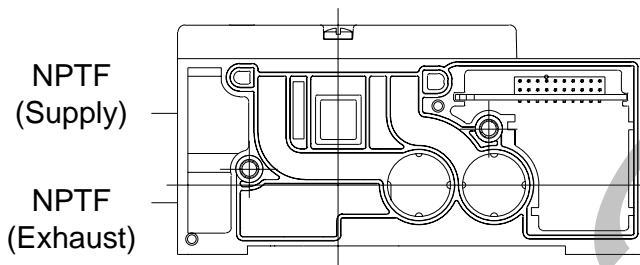
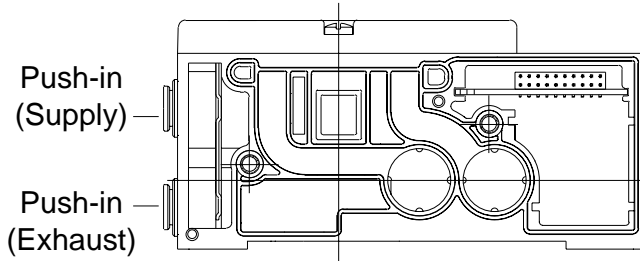
top dimensions = inches
bottom dimensions (in parenthesis) = millimeters

A	B	C	D	E	F	G	H	I	J	K	L
0.07	4.87	6.26	5.25	6.57	1.04	0.52	3.72	1.06	0.55	0.47	1.59
(1.8)	(123.7)	(159.0)	(133.3)	(166.9)	(26.4)	(13.2)	(94.5)	(27.0)	(14.0)	(11.9)	(40.4)



2012 Series

Mid-Station Supply and Exhaust Block

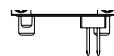
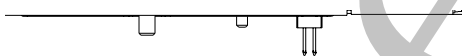


Mid-Station Supply & Exhaust Block Kits

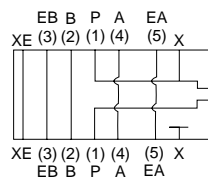
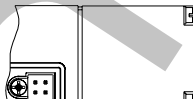
FITTING TYPE	PART NO.
NPTF 3/8	239-1330
G 3/8	239-1331
3/8 Push-in	239-1332
10mm Push-in	239-1333

Sandwich Shut Off Block

239-1585

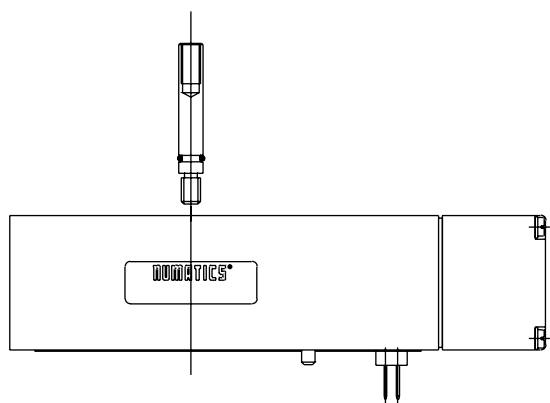


- Used to shut-off pressure to the valve which is mounted above it.
- Allows easy maintenance without the need to shut-off pressure to the whole manifold.





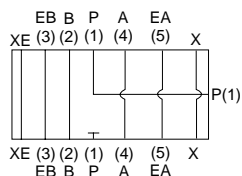
Sandwich Pressure Block



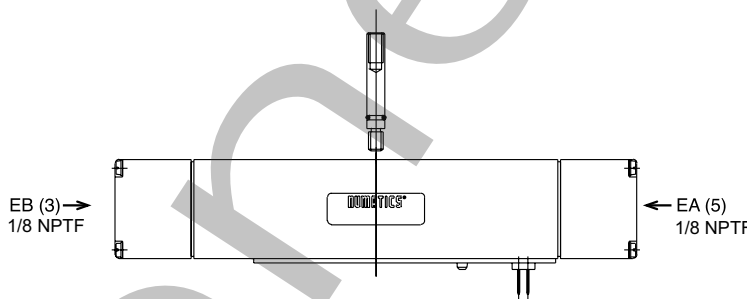
- Used to supply a separate pressure to a single valve station without needing blocking disks.

Sandwich Pressure Block Kit

PORT TYPE	PART NO.
NPTF 1/4	239-1422
G 1/4	239-1436



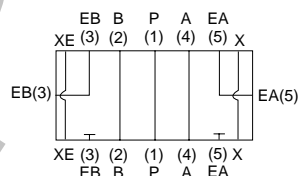
Sandwich Exhaust Block



- Used to isolate the exhaust of a single valve station from the manifold.
- Allows faster exhaust response by re-routing.
- Exhaust externally to the manifold.

Sandwich Exhaust Block Kit

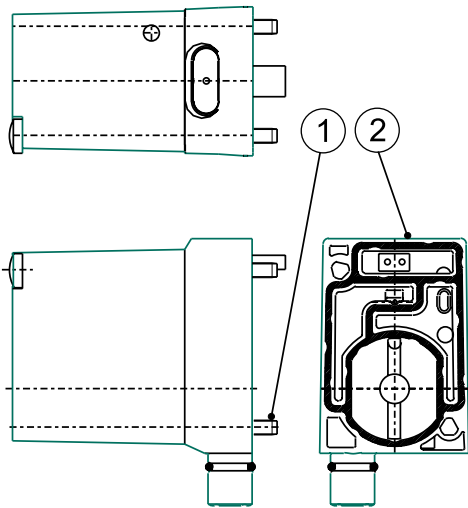
PORT TYPE	PART NO.
NPTF 1/4	239-1554
G 1/4	239-1556



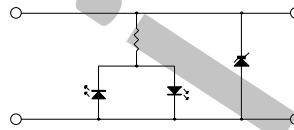


2012 Series

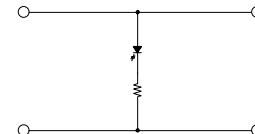
Solenoid Pilot Assembly



DESCRIPTION	12 VDC	24 VDC	24 VAC	120 VAC
14 end, push non-locking override	236-417	236-356	237-1070	237-1079
12 end, push non-locking override	236-418	236-357	237-1071	237-1080
14 end, turn & lock override	236-420	236-359	237-1073	237-1082
12 end, turn & lock override	236-421	236-360	237-1074	237-1083
14 end, no override	236-423	236-362	237-1076	237-1085
12 end, no override	236-424	236-363	237-1077	237-1086



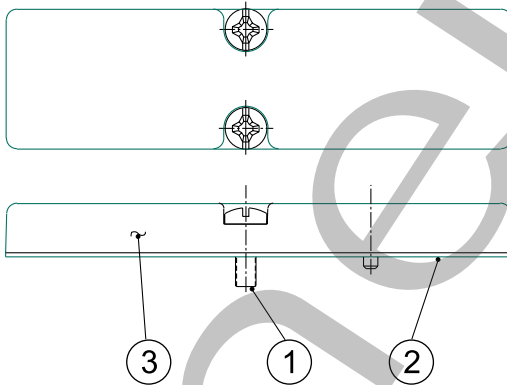
DC Solenoid
Circuit Diagram



AC Solenoid
Circuit Diagram

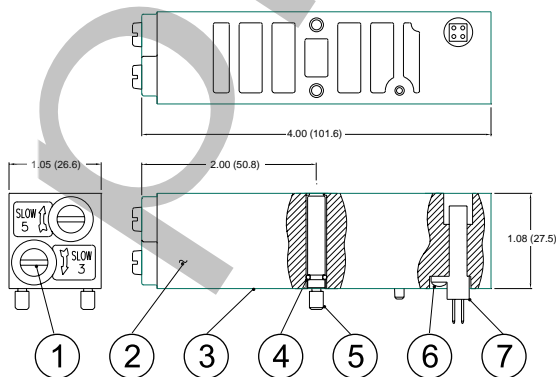
DET. NO.	NO. REQ'D	PART NAME	PART NO.
1	1	Gasket	113-373
2	2	Screw	127-823

Blank Station Plate Kit 239-1390



DET. NO.	NO. REQ'D	PART NAME	PART NO.
1	2	Screw	127-876
2	1	Gasket	113-534
3	1	Blank Station Plate	104-726

Speed Control Kit 239-1260



DET. NO.	NO. REQ'D	PART NAME	PART NO.
1	2	Metering Screw	118-178
Not Shown	2	Nylon Rod	125-131
2	1	Speed Control Body	119-632
3	1	Gasket	113-534
4	2	O-Ring	126-528
5	2	Stud	125-812
6	1	Screw	127-318
7	1	Plug Assembly	230-904



2012 Series



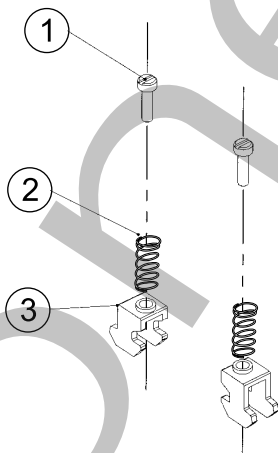
Interchangeable Push-in Cartridge Fittings



PORTS	SIZE	TYPE	PART NO.
1, 2, 4	1/4"	Push-in	134-506
1, 2, 4	3/8"	Push-in	134-508
1, 2, 4	8mm	Push-in	134-507
1, 2, 4	10mm	Push-in	134-509
1, 2, 4	n/a	Plug Ass'y	239-1190
3/5	3/8"	Push-in	134-510
3/5	1/2"	Push-in	134-512
3/5	12mm	Push-in	134-511
3/5	14mm	Push-in	134-513
3/5	n/a	Plug Ass'y	239-1191
X, XE	4mm	Push-in	134-498
X, XE	6mm	Push-in	134-499
X, XE	1/4"	Push-in	134-518
X, XE	n/a	Plug Ass'y	239-1086

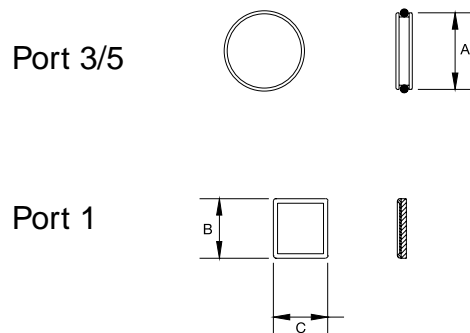
DIN Rail Clamp Kit

239-980

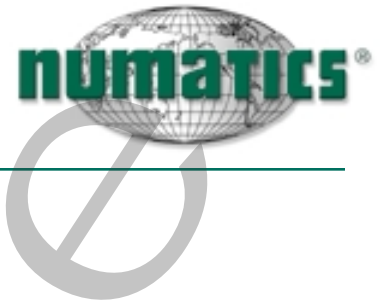


DET. NO.	NO. REQ'D	PART NAME	PART NO.
1	4	Screw	127-472
2	4	Spring	115-355
3	4	Clamp	125-720

Blocking Discs

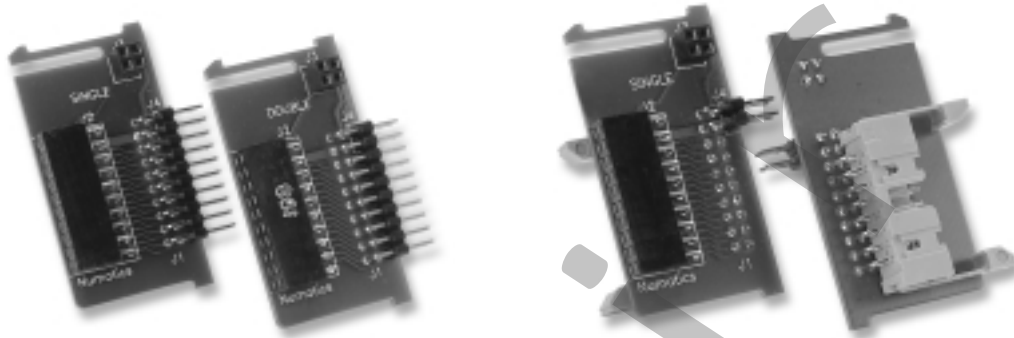


PORT	PART NO.	A	B	C
1	124-341	N/A	0.54 (13.7)	0.50 (12.6)
3/5	239-907	0.70 (17.8)	N/A	N/A



2012 Series

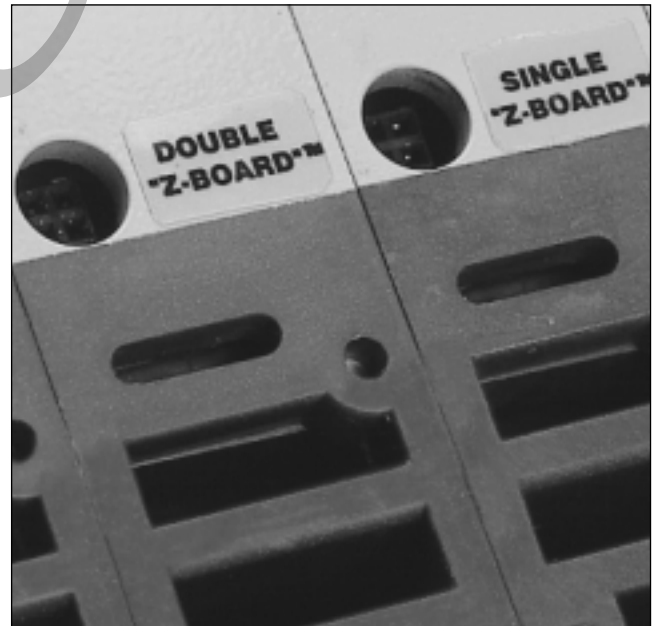
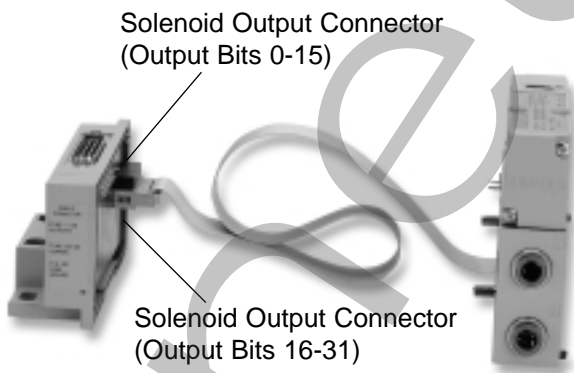
“Z-Board”™



MANIFOLD “Z - BOARD”	PART NO.
Single “Z-Board”™	256-640
Double “Z-Board”™	256-641
Single “Z-Board”™ w/ribbon connector (excludes cable)*	256-642
Double “Z-Board”™ w/ribbon connector (excludes cable)*	256-643

*Used only with ribbon cable and solenoid output connector (Bits 16-31).

Ribbon Cable Assembly Kit 239-1336



Label on manifold block indicates Installed “Z-Board”™ type.

NO. REQ'D.	PART NAME	PART NO.
1	Replacement Ribbon Cable Assembly	230-905
2	Replacement Snap In Latch	140-721

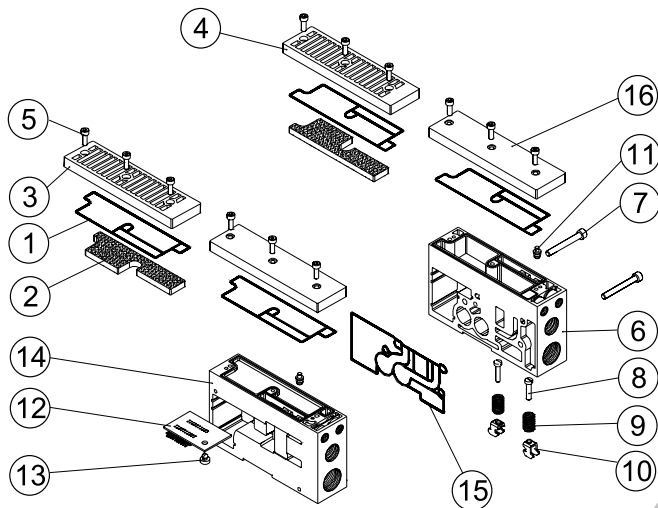
Ribbon cable option used for manifold assemblies that exceed 16 solenoid outputs.



2012 Series

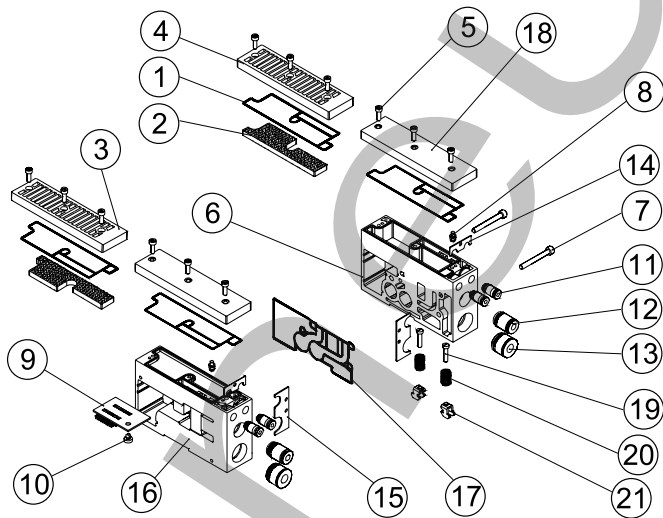


End Plate Kit - Threaded



DET NO.	NO. REQ'D	PART NAME	PART NO.
1	2	Cover Gasket	113-536
2	2	Muffler (Optional)	125-851
3	1	LH Endplate Cover Vented (Optional)	005-193
4	1	RH Endplate Cover Vented (Optional)	005-194
5	6	Screw	127-368
6	1	RH Endplate	104-713
7	2	Screw	127-413
8	2	Screw (DIN Rail Only)	127-472
9	2	Spring (DIN Rail Only)	115-355
10	2	Clamp (DIN Rail Only)	125-720
11	2	Pilot Plug Ass'y	213-497
12	1	Transfer Conn. Board Ass'y	256-644
13	1	Retention Pin	125-845
14	1	LH Endplate	104-710
15	1	Gasket	113-537
16	2	End Plate Cover	105-400

End Plate Kit - Push-in



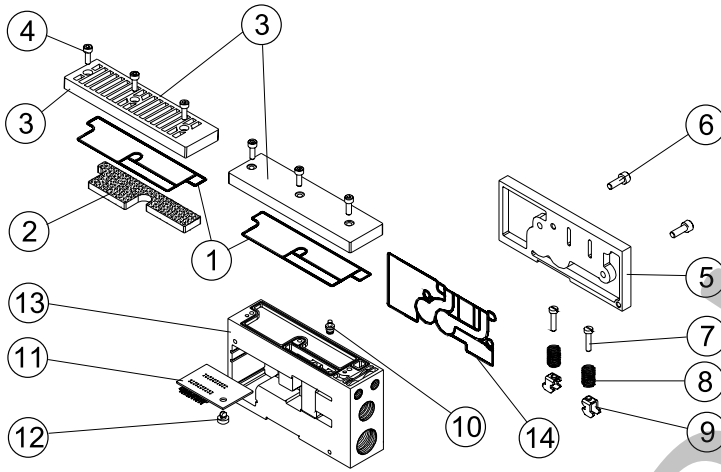
DET NO.	NO. REQ'D	PART NAME	PART NO.
1	2	Cover Gasket	113-536
2	2	Muffler (Optional)	125-851
3	1	LH Endplate Cover Vented (Optional)	005-193
4	1	RH Endplate Cover Vented (Optional)	005-194
5	6	Screw	127-368
6	1	RH Endplate	104-712
7	2	Screw	127-413
8	2	Pilot Plug Ass'y	213-497
9	1	Transfer Conn. Board Ass'y	256-644
10	1	Retention Pin	125-845
11	4	Push-in Fittings	See p. 33
12	2	Push-in Fittings	See p. 33
13	2	Push-in Fittings	See p. 33
14	2	Retaining Clip (Small)	125-814
15	2	Retaining Clip (Large)	125-815
16	1	LH Endplate (NPTF)	104-709
17	1	Gasket	113-537
18	2	End Plate Cover	105-400
19	2	Screw (DIN Rail Only)	127-472
20	2	Spring (DIN Rail Only)	115-355
21	2	Clamp (DIN Rail Only)	125-720

PORT TYPE	NPTF			ISO228/1-G			PUSH-IN			PUSH-IN			PUSH-IN			PUSH-IN		
PORT	1	3/5	X, XE	1	3/5	X, XE	1	3/5	X, XE	1	3/5	X, XE	1	3/5	X, XE	1	3/5	X, XE
PORT SIZE	3/8	1/2	1/8	3/8	1/2	1/8	1/4	3/8	1/4	3/8	1/2	1/4	8mm	12mm	6mm	10mm	14mm	6mm
Kit w/o muffler, w/o DIN Rail	239-1236			239-1240			239-1247			239-1248			239-1255			239-1256		
Kit w/o muffler, w/ DIN Rail	239-1235			239-1239			239-1245			239-1246			239-1253			239-1254		
Kit w/ muffler, w/o DIN Rail	239-1234			239-1238			239-1243			239-1244			239-1251			239-1252		
Kit w/ muffler, w/ DIN Rail	239-1233			239-1237			239-1241			239-1242			239-1249			239-1250		



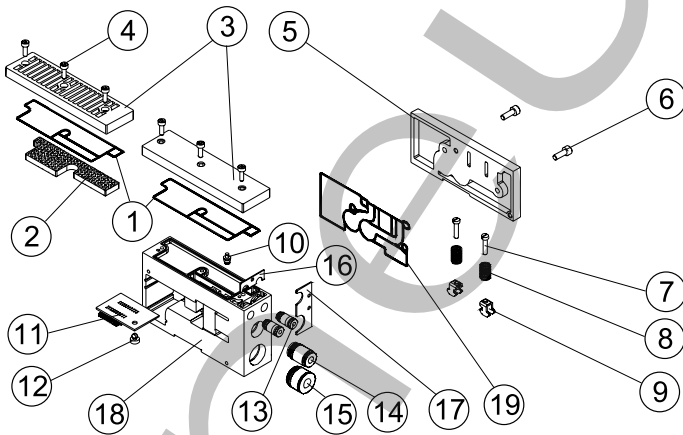
2012 Series

End Plate Kit with LH Ports Only - Threaded



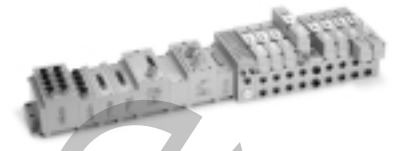
DET NO.	NO. REQ'D	PART NAME	PART NO.
1	1	Gasket	113-536
2	1	Muffler (Optional)	125-851
3	1	LH Endplate Cover (Muffler Option)	005-193
3	1	LH Endplate Cover	105-400
4	3	Screw	127-368
5	1	RH Portless Endplate	105-423
6	2	Screw	127-407
7	2	Screw (DIN Rail Only)	127-472
8	4	Spring (DIN Rail Only)	115-355
9	4	Clamp (DIN Rail Only)	125-720
10	1	Pilot Plug Ass'y	213-497
11	1	Transfer Conn. Board Ass'y	256-644
12	1	Retention Pin	125-845
13	1	LH Endplate (NPTF)	104-710
13	1	LH Endplate (G)	104-711
14	1	Gasket	113-537

End Plate Kit with LH Ports Only - Push-in



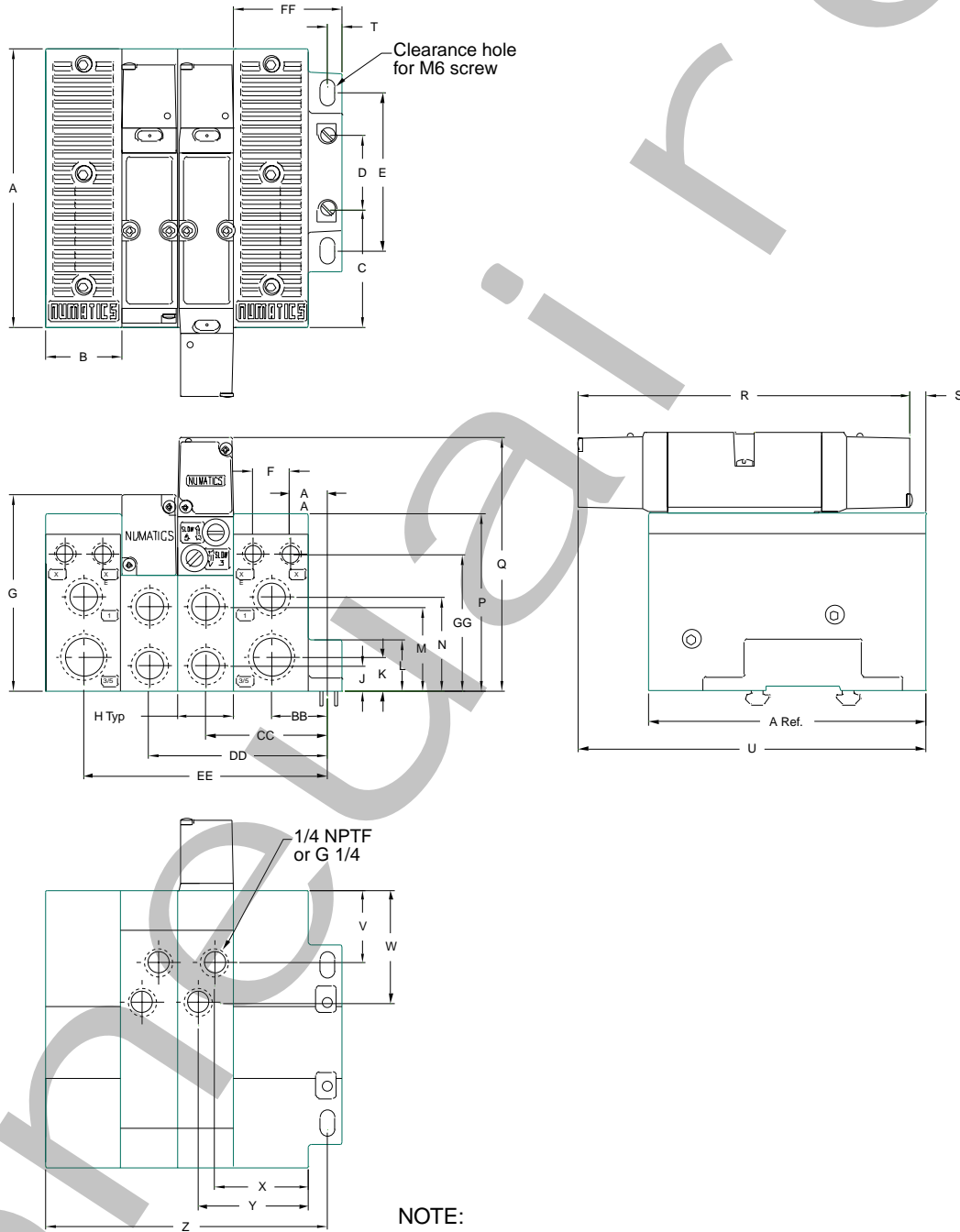
DET NO.	NO. REQ'D	PART NAME	PART NO.
1	1	Gasket	113-536
2	1	Muffler (Optional)	125-851
3	1	LH Endplate Cover (Muffler Option)	005-193
3	1	LH Endplate Cover	105-400
4	3	Screw	127-368
5	1	RH Portless Endplate	105-423
6	2	Screw	127-407
7	2	Screw (DIN Rail Only)	127-472
8	4	Spring (DIN Rail Only)	115-355
9	4	Clamp (DIN Rail Only)	125-720
10	1	Pilot Plug Ass'y	213-497
11	1	Transfer Conn. Board Ass'y	256-644
12	1	Retention Pin	125-845
13	2	Push-in Fittings	See p. 33
14	1	Push-in Fittings	See p. 33
15	1	Push-in Fittings	See p. 33
16	1	Retaining Clip (Small)	125-814
17	1	Retaining Clip (Large)	125-815
18	1	LH Endplate (NPTF)	104-709
19	1	Gasket	113-537

PORT TYPE	NPTF			ISO228/1-G			PUSH-IN			PUSH-IN			PUSH-IN			PUSH-IN		
PORT	1	3/5	X, XE	1	3/5	X, XE	1	3/5	X, XE	1	3/5	X, XE	1	3/5	X, XE	1	3/5	X, XE
PORT SIZE	3/8	1/2	1/8	3/8	1/2	1/8	1/4	3/8	1/4	3/8	1/2	1/4	8mm	12mm	6mm	10mm	14mm	6mm
LH Ports Only Kit w/o muffler, w/o DIN Rail	239-1688			239-1692			239-1699			239-1700			239-1707			239-1708		
LH Ports Only Kit w/o muffler, w/ DIN Rail	239-1687			239-1691			239-1697			239-1698			239-1705			239-1706		
LH Ports Only Kit w/ muffler, w/o DIN Rail	239-1686			239-1690			239-1695			239-1696			239-1703			239-1704		
LH Ports Only Kit w/ muffler, w/ DIN Rail	239-1685			239-1689			239-1693			239-1694			239-1701			239-1702		



2012 Series

Manifold Assembly



Dimensions

top dimensions = inches
bottom dimensions (in parenthesis) = millimeters

A	B	C	D	E	F	G	H	J	K	L	M	N	P	Q	R	S	T	U
5.25	1.42	2.16	1.50	3.02	0.71	3.71	1.06	0.47	0.63	0.97	1.59	1.77	3.35	4.80	6.26	0.30	0.29	6.56
(133.3)	(36.0)	(55.0)	(38.1)	(76.8)	(18.0)	(94.3)	(27.0)	(12.1)	(16.0)	(24.5)	(40.3)	(45.0)	(85.0)	(121.9)	(159.0)	(7.6)	(7.4)	(166.6)

V	W	X	Y	Z	AA	BB	CC	DD	EE	FF	GG
1.42	2.12	1.78	2.10	5.30	0.70	1.05	2.29	3.35	4.55	2.05	2.57
(36.1)	(53.8)	(45.2)	(53.3)	(134.6)	(17.8)	(26.7)	(58.2)	(85.1)	(115.6)	(52.0)	(65.4)

NOTE:

- For Electrical Interface option dimensions see Electronics section.
- For Fieldbus Electronics dimensions see Electronics section.

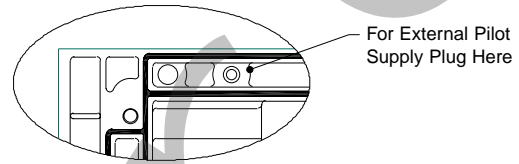
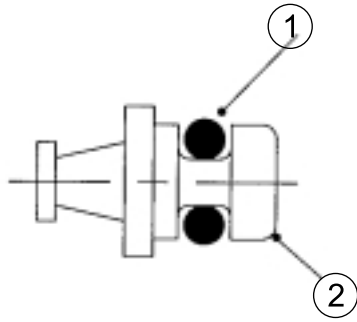


2012 Series

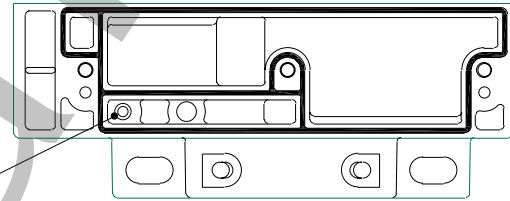
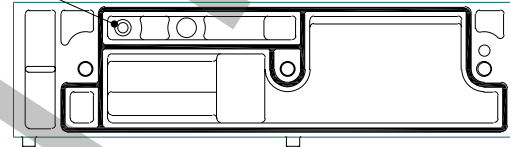
Internal Pilot Plug

213-497

Internal/External Pilot Selection



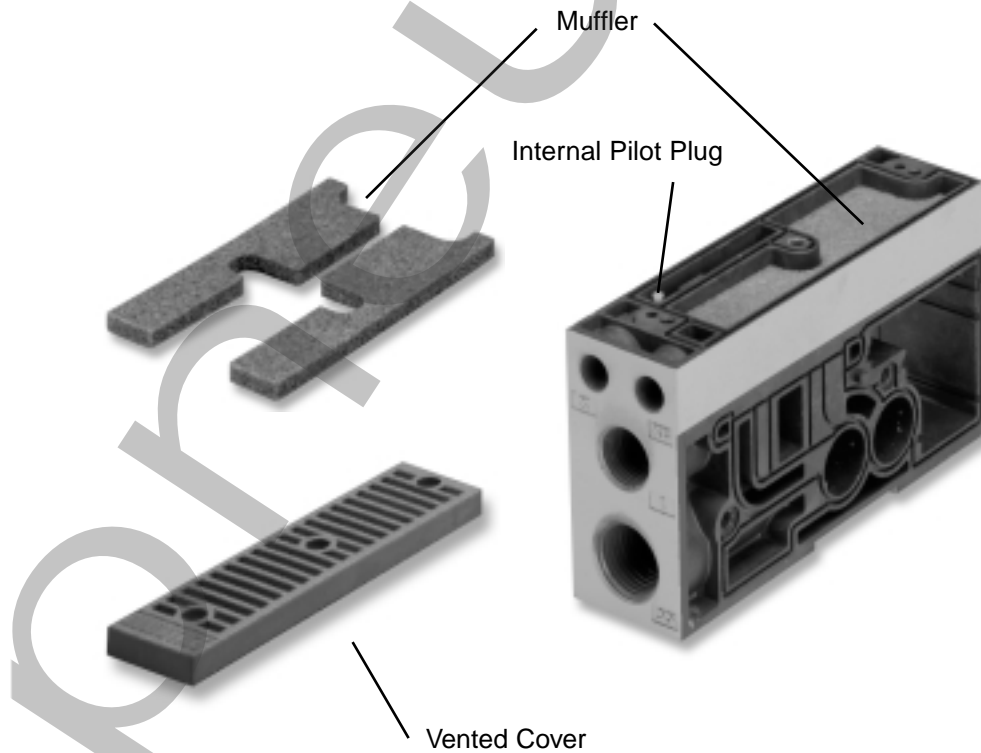
For Internal Pilot Supply Plug Here



DET. NO.	NO. REQ'D	PART NAME	PART NO.
1	1	Plug	125-820
2	1	O-Ring	126-471

Internal Muffler

125-851

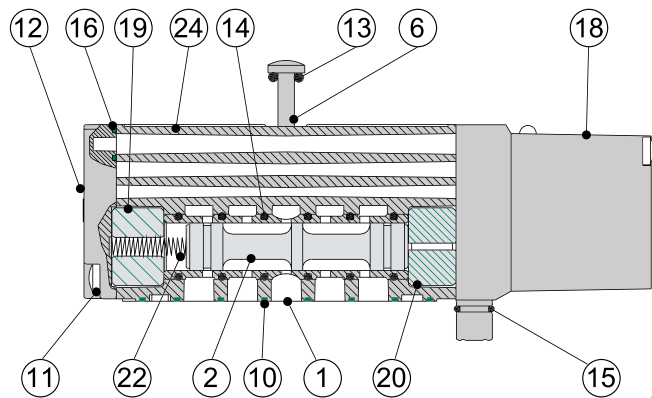




Valve Service Kits and Parts

Kit No. 2012-K1*

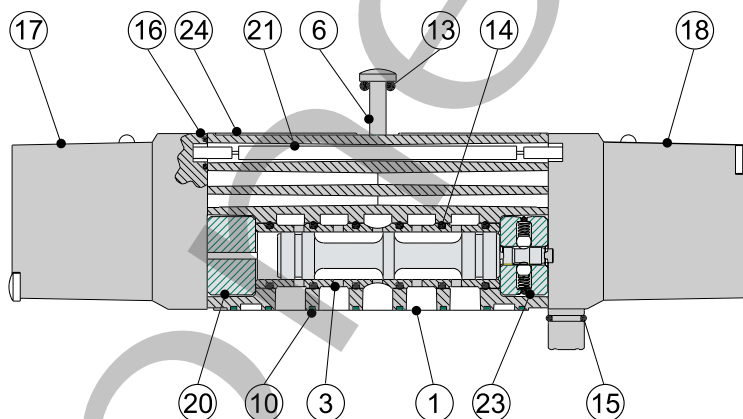
(For Models 122BA4, 123BA4, 12HBA4, 12KBA4)



DET NO.	BA4	BB4	PART NAME	PART NO.
1	1	1	Body (not sold separately)	
2	1	N/A	Spool & Sleeve Assembly	209-517
3	N/A	1	Spool & Sleeve Assembly	209-518
6	2	2	Screw Assembly	213-459
10 *	1	1	Gasket Body/Manifold	113-370
11	2	N/A	Screw	127-650
12	1	N/A	Spring Cap	104-673
13 *	2	2	O-Ring	126-163
14 *	6	6	O-Ring	126-395
15 *	1	1	O-Ring	126-144
16 *	2	2	Gasket Adaptor/Body	113-373
17	N/A	1	Solenoid Pilot - 12 End	See p. 32
18	1	1	Solenoid Pilot - 14 End	See p. 32
19 *	1	N/A	Bumper 12 End	114-154
20 *	1	N/A	Bumper 14 End	114-153
21	N/A	1	14-12 Recepticle	230-915
22 *	1	N/A	Spring	115-271
23 *	N/A	1	Detent Assembly	210-128
24	1	1	Nameplate	122-1074

Kit No. 2012-K2*

(For Models 122BB4, 123BB4, 12HBB4, 12KBB4)



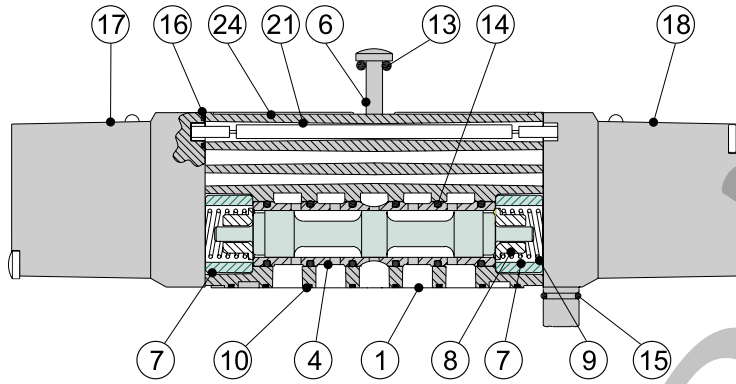
*Indicates parts included in service kit.



2012 Series

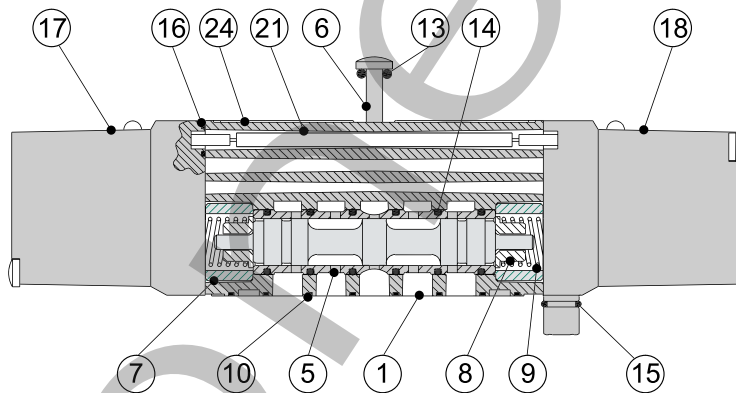
Valve Service Kits and Parts

Kit No. 2012-K3*
(For Models 122BB5, 123BB5, 12HBB5, 12KBB5)



DET NO.	BB5	BB6	PART NAME	PART NO.
1	1	1	Body (not sold separately)	
4	1	N/A	Spool & Sleeve Assembly	209-519
5	N/A	1	Spool & Sleeve Assembly	209-520
6	2	2	Screw Assembly	213-459
7 *	2	2	Bushing	117-174
8 *	2	2	Spring Retainer	116-464
9 *	2	2	Return Spring	115-284
10 *	1	1	Gasket Body/Manifold	113-370
13 *	2	2	O-Ring	126-163
14 *	6	6	O-Ring	126-395
15 *	1	1	O-Ring	126-144
16 *	2	2	Gasket Adaptor/Body	113-373
17	1	1	Solenoid Pilot - 12 End	See p. 32
18	1	1	Solenoid Pilot - 14 End	See p. 32
21	1	1	14-12 Recepticle	230-915
24	1	1	Nameplate	122-1074

Kit No. 2012-K3*
(For Models 122BB6, 123BB6, 12HBB6, 12KBB6)



*Indicates parts included in service kit.