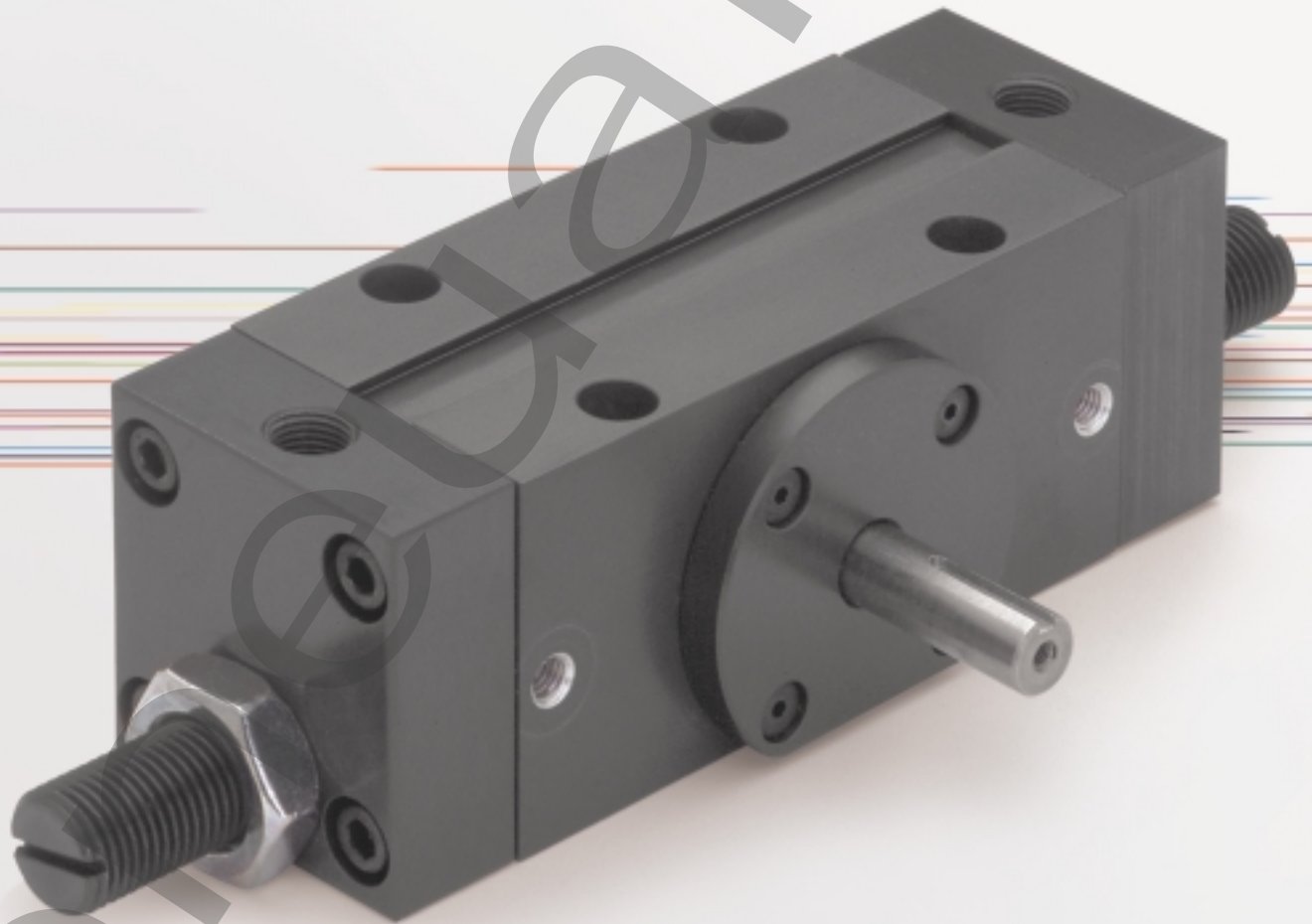


ORDER
ONLINE



Actuators



AR Series

Rotary Actuator

We're everywhere you need us to be!



AR Series

Features and Benefits3-6
How to Order3
Dimensions4
Technical Specifications5
<i>NuMate</i> [™] Compatibility6

Pneumair



AR Series

Rotary Actuator Utilizes a Dual Rack-n-Pinion System

The Torque Rack produces the Rotary output Torque while the control Rack determines Rotary stroke.

The output shaft is supported by two angular contact Bearings. The *NuMate*[™] mounting feature provides a convenient method of mounting the AR-Rotaries to the SH-Series linear slide.

A. Body:

Hardcoat Anodized Aluminum Lightweight, durable,
High strength to weight ratio, Teflon[®] impregnated inside and out

Multiple mounting surfaces Flexible, easy access mounting

B. Output Shaft:

Hardened electroless nickel.....Corrosion and wear resistance

Angular Contact Bearings Two angular contact bearings better supporting both
thrust and Radial loads.

C. Stroke Adjustment:

C.W. and C.C.W. Adjustment over 185° total stroke
Infinite adjustment in both directions of rotation, secured by jam nut

D. Sensor Mounting Channel:

Machined into bodyAccepts Numatics Motion Control
dovetail switches (world switch), Easy access, easy adjustment

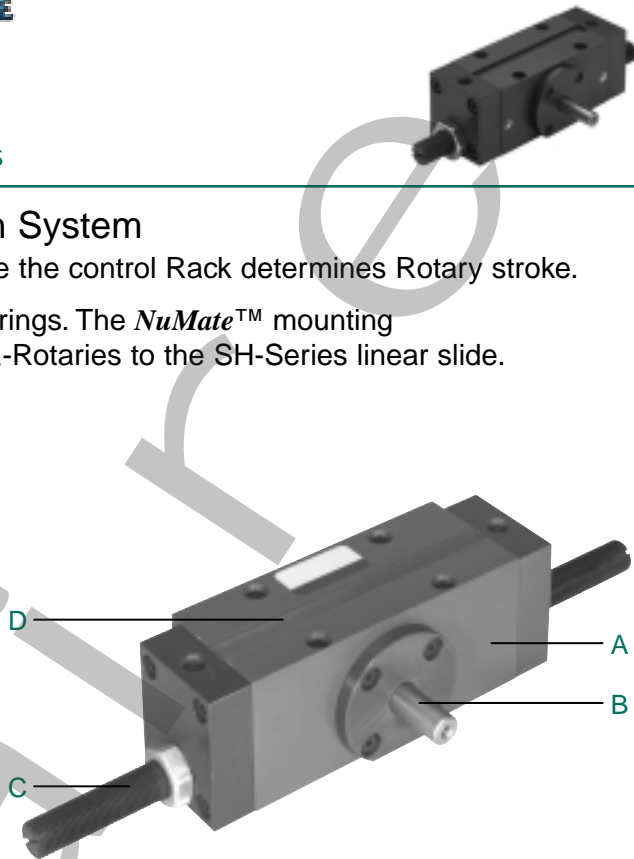
Magnetic piston is standard on all models.

Permanently lubricated seals are standard on all models, no lube required. Viton compound for high temperature applications, optional.

Factory lubricated, fluorinated grease. Non-toxic, non-migrating and no chlorine, silicones or chlorofluorocarbons (CFCs). Cleanroom applied.

Additional options:

- Shock absorbers
- Double output shaft





AR Series

How to Order

AR 020 A 1 A Z C 1 X

Bore Sizes

020 = 20 mm
025 = 25 mm
032 = 32 mm

Rotation

A = 90°
B = 180°

Seal Option

1 = Buna
2 = Viton

Shaft Option

A = Standard Single Shaft End
Z = Additional Double Shaft End*

*Tapped both ends.

Disk Size**

A = ND020
B = ND025
C = ND032
X = No Disk.

Shock Options

1 = Shocks Yes
2 = Shocks No

Sensing Position

A = Single Position CW
B = Single Position CCW
C = Two Position
D = No Sensing

Sensing Type

Standard Cord Set
1 = Hall Effect - PNP (sourcing)
2 = Hall Effect - NPN (sinking)
3 = Reed Switch
6 = No Sensing
Quick Disconnect Cord Set
Z = Hall Effect - PNP (sourcing)
Y = Hall Effect - NPN (sinking)
X = Reed Switch
See Sensor section.

Example order:

Part Number: AR020A1AZC1X*

Part Description: AR rotary with 20mm bore, 90° rotation, standard seals, standard single output shaft, Hall PNP quick disconnect sensing, two positions, with shocks without *NuMate™* disk.

*When entering an order, DO NOT use spaces or dashes. Follow example above.

Replacement Components and Kits

AR Rotary Seal Kit

SERIES	BUNA	VITON	REPLACEMENT	SHOCKS
AR020	ARSKB-020	ARSKV-020	AR020	SK030
AR025	ARSKB-025	ARSKV-025	AR025	SK106
AR032	ARSKB-032	ARSKV-032	AR032	SK106

Sensing Kits

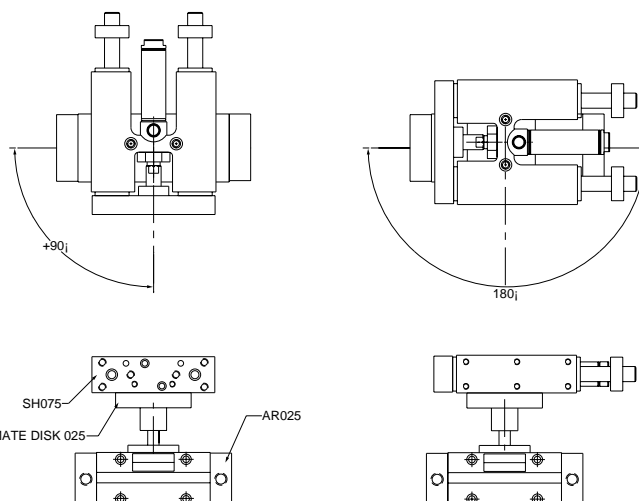
STANDARD CORD SET SWITCH		PART NO.
Hall Effect PNP (Sourcing)		HPNPS31
Hall Effect NPN (Sinking)		HNPNS32
Reed Switch		RSS02
QUICK DISCONNECT CORD SET		PART NO.
Hall Effect PNP (Sourcing)		HPNPQ31
Hall Effect NPN (Sinking)		HNPNQ32
Reed Switch		RSQ02
90° 5 meter cable		PXC90
Straight 5 meter cable		PXCST

NuMate™ Disk

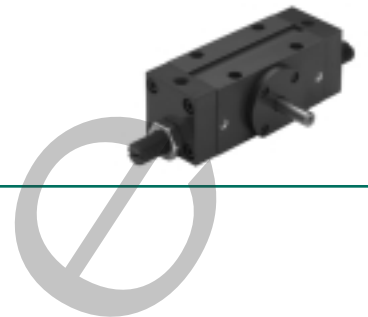
The *NuMate™* Disk provides a simple solution for combining Rotary and Linear motion

**Compatibility Table

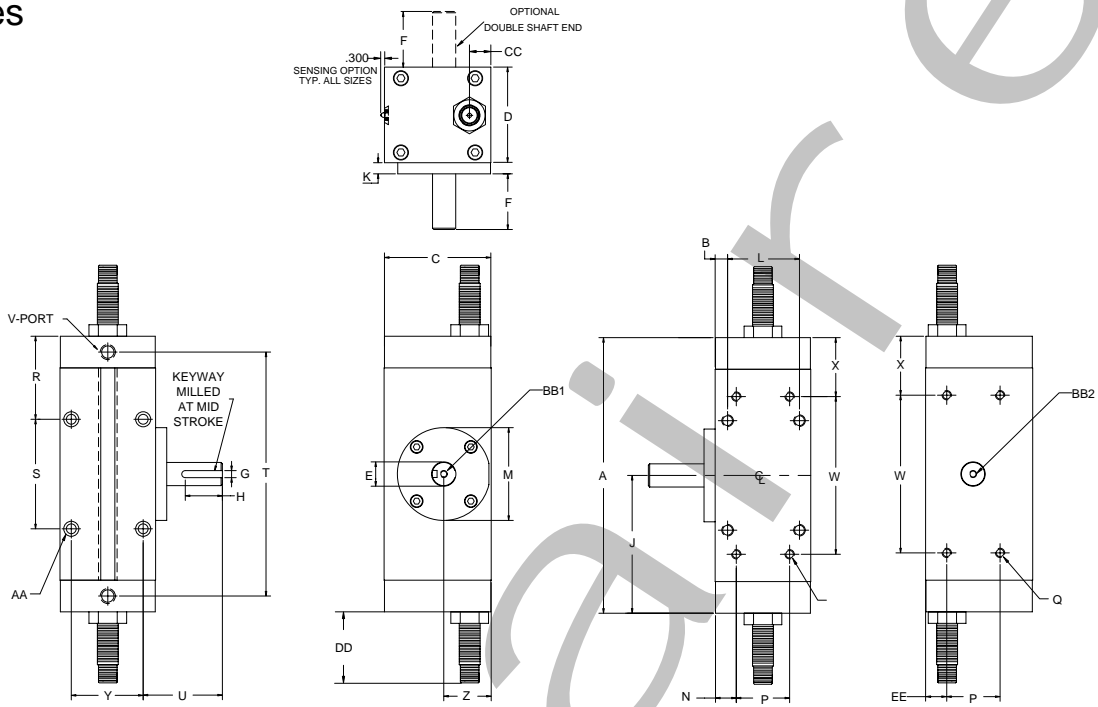
AR Series	SH Series	ND
AR020	SH056	ND020
AR025	SH075	ND025
AR032	SH106	ND032



AR Series



AR Series



	AR020	AR025	AR032
A	5.18	6.43	7.43
B	0.22	0.22	0.33
C	1.83	2.25	2.89
D	1.76	2.12	2.56
E	0.37	0.47	0.63
F	1.00	1.28	1.50
G	0.093 X 0.054/0.058 DP	0.125 X 0.070/0.074 DP	0.187 X 0.105/0.110 DP
H	0.65	0.75	1.00
J	2.58	3.21	3.71
K	0.24	0.25	0.30
L	1.31	1.57	1.94
M	1.875	2.125	2.50
N	0.47	0.49	0.56
P	0.81	1.13	1.44
Q	10-32	1/4-20	1/4-20
R	1.50	2.02	2.23
S	2.16	2.37	2.96
T	4.46	5.71	6.57
U	1.46	1.75	2.13
V	1/8 NPT	1/8 NPT	1/8 NPT
W	3.38	3.81	4.26
X	0.90	1.30	1.58
Y	1.31	1.57	1.94
Z	0.80	0.98	1.27
AA	C' Bored for M4 SHCS, Tapped M5 X 0.8 from opposite side	C' Bored for M5 SHCS, Tapped M8 X 1.25 from opposite side	C' Bored for M6 SHCS, Tapped M8 X 1.25 from opposite side
BB1	M3 X 0.5	M5 X 0.8	M5 X 0.8
BB2	M3 X 0.5	M5 X 0.8	M5 X 0.8
CC	0.40	0.51	0.58
DD	1.31	1.50	1.81
EE	0.40	0.42	0.56

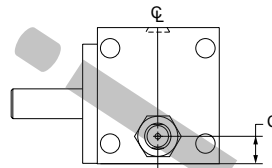
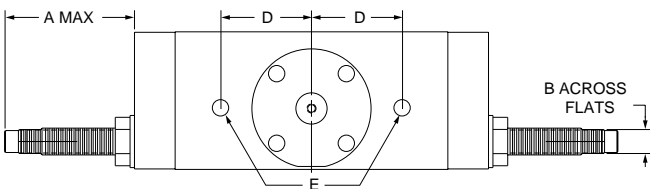
AR Series

AR Series

MODEL	TORQUE @ 100PSI	DYNAMIC THRUST LOAD	DYNAMIC RADIAL LOAD	DISPLACEMENT PER DEGREE	UNIT WEIGHT	MAXIMUM PRESSURE
AR020	14.6 inlb (1.6 N-m)	106 lbf (471 N)	421 lbf (1872 N)	0.0026 cuin. (0.043 cc)	2.3 lbs	250 psi
AR025	29.4 inlb (3.3 N-m)	127 lbf (564 N)	501 lbf (2228 N)	0.0052 cuin. (0.085 cc)	3.1 lbs	250 psi
AR032	61.3 inlb (6.9 N-m)	191 lbf (849 N)	677 lbf (3011 N)	0.0108 cuin. (0.177 cc)	5.7 lbs	250 psi

Shock Option

Face Mounting



	AR020	AR025	AR032
A	2.70	2.70	2.75
B	0.49	0.49	0.49
C	0.40	0.51	0.58
D	1.69	1.90	2.12
E	M5	M6	M8

Kinetic Energy Basic Formula

$$KE = 1/2 J \omega^2$$

$$\omega = 0.035 X \frac{\text{Angle traveled (deg.)}}{\text{Rotation time (sec)}}$$

KE = Kinetic Energy

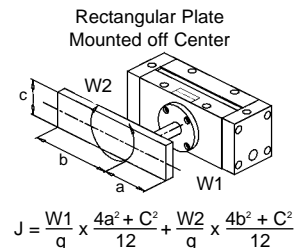
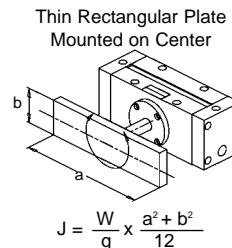
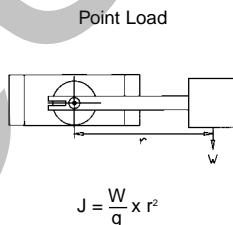
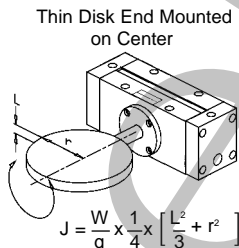
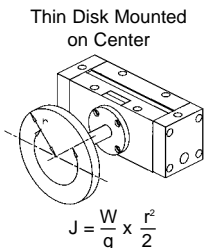
J = Rotational mass moment of inertia (in-lb-sec²)
(dependent on physical size of object and weight)

W = Peak Velocity (rad/sec) (Assuming twice average velocity)

W = Weight of load (lb)

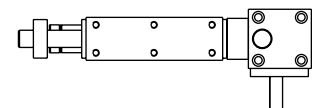
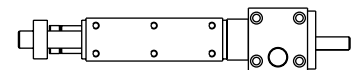
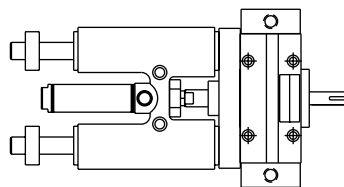
g = Gravitational constant = 386.4 in/sec²

r = Radius of gyration (in)



NuMate™ Direct Mount, Mounting System

The NuMate™ mounting system provides a standard series of drilled, tapped and counterbored holes allowing each slide series to mount with each other and other slide series in various combinations without the use of adapter, transition plates or other costly methods. The NuMate™ mounting system is the most versatile mounting method of its kind, providing customers with a cost effective method of building modular component automation. The NuMate™ mounting system is consistent across the Numatics Motion Control spectrum of products for automation.



Compatibility Table

SH SERIES	AR SERIES
SH075	AR020
SH106	AR025
SH150	AR032