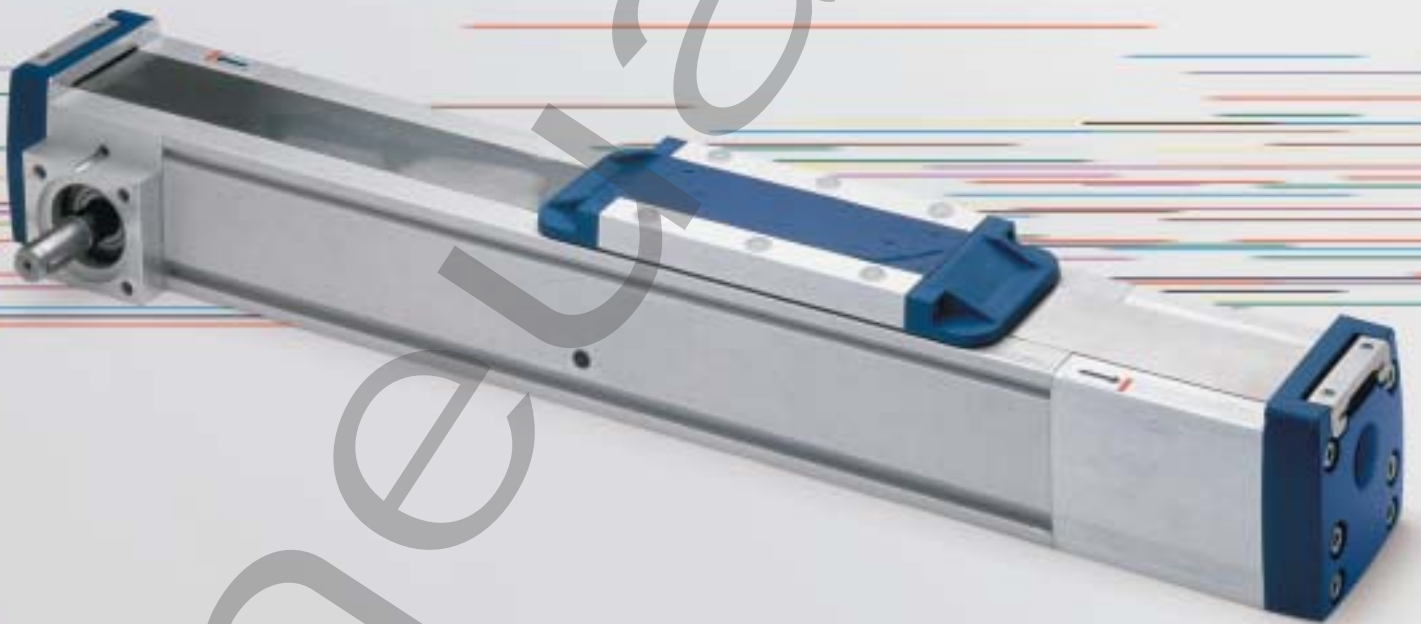


ORDER
ONLINE



Electrical
Actuators



BDU Series
Belt Drive Unit

We're everywhere you need us to be!



BDU Series Belt Driven Units	3-12
Features and Benefits	3
How to Order	4
Dimensions	5-7
BDU Motor Mounts	8-9
NuMate Compatability	10
Technical Specifications	11
Load Ratings	11
Switch Mounting	12
Mounting Brackets	12

Pneumatic



**BDU Series
Belt Driven Units**

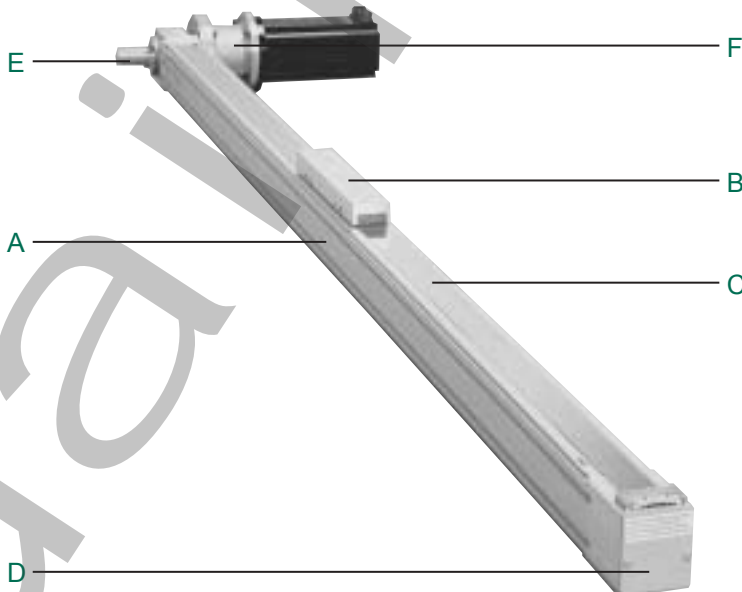


BDU - Series Belt Driven Units

The BDU-Series is a belt driven guided linear motion system utilizing a tooth-profiled belt to control position of its moving carriage. This belt driven design provides modest load carrying capacity, high speed and very long stroke capabilities. The BDU-Series requires a motor of some type to drive the unit. Motors include stepper, servo, AC/DC synchronous and air drives.

The BDU-Series is designed for moving loads at high speeds over greater distances with relative positioning accuracies. This product has not been designed for precision positioning accuracies. For applications requiring precision positioning, refer to BSG Ball Screw Gantry Series.

NMC does not recommend the BDU-Series in vertical applications.



Features and Benefits:

A. Body:

- Body Profile extruded aluminum, rigid, light weight
- Rigid Design internal stiffening ribs support carriage
- Side Slots for position switch mounting and foot mounting brackets

B. Carriage:

- Guided and Supported body extrusion geometry supports carriage motion
- Robalon™ Bearings synthetic bearing material for high speed applications
- Thread Inserts secure mounting for high speed application
- NuMate™ Direct Mounting Pattern other Numatics Motion Control products mount directly to carriage without adapters or transition plates
- increased flexibility, cost and time savings

C. Drive Belt:

- Steel Reinforced Polyurethane . . . light weight, high strength, low stretch
- Trapezoid Profile eliminates slip, greater accuracy
- Belt Cover protects belt from contamination, not available on the BDU50 Series

D. End Cap:

- Belt Tensioning System easy access, easy adjustment

E. Output Shaft:

- Dual Output Shaft accessible from both sides of body, motor mounting from both sides
- Protective Cover molded plastic, covers rotating shaft end opposite of motor, protects

F. Motor Mount Assembly:

- Cast Motor Flange for NEMA 23, 34 and 42 frame motors



BDU Series
Belt Driven Units



How to Order

BDU 55 060 A B 6 D X

Series

55
75
100

Stroke

001 to 264 Inches

Mounting Brackets

A = 2 Brackets
B = 3 Brackets
C = 4 Brackets
D = 5 Brackets
E = 6 Brackets

Reference *page 12* for details.

Motor Mounting

A = NEMA 23
B = NEMA 34
C = NEMA 42
X = No Mount

NuMate Interface

A = "A" Mount
B = "B" Mount
C = "C" Mount
D = "D" Mount
E = "E" Mount
X = No Mount

Reference *page 10* for details.

Sensing Position

A = Single Position Extended
B = Single Position Retract
C = Two Position
D = No Sensing
E = Three Position
F = Four Position

Sensing Type

Standard Cord Set

1 = Hall Effect - PNP (sourcing)
2 = Hall Effect - NPN (sinking)
3 = Reed Switch
6 = No Sensing

Quick Disconnect Cord Set

Z = Hall Effect - PNP (sourcing)
Y = Hall Effect - NPN (sinking)
X = Reed Switch

See Sensor section.

Example order:

Part Number: BDU55060AB6DX*

Part Description: 55 Series with 60 inch stroke, 2 mounting brackets, NEMA 34 motor mounts, no sensing, and no NuMate interface.

* When entering an order, DO NOT use spaces or dashes.

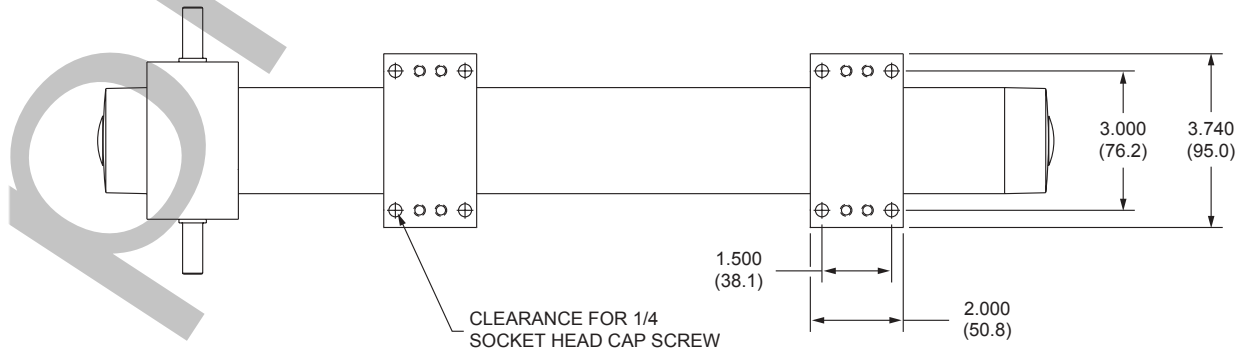
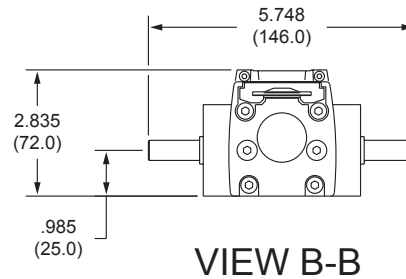
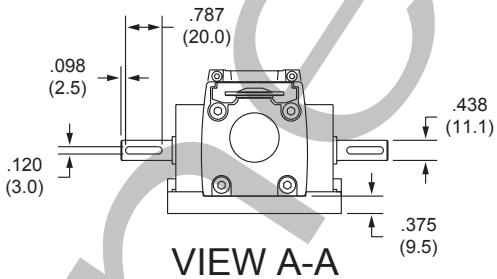
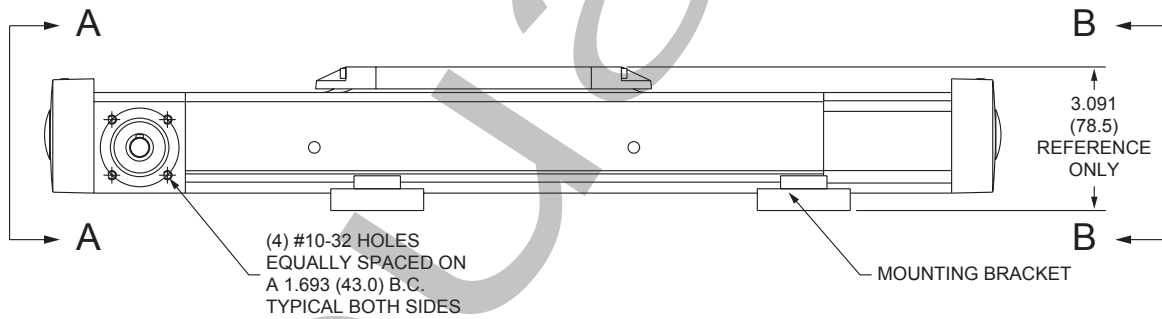
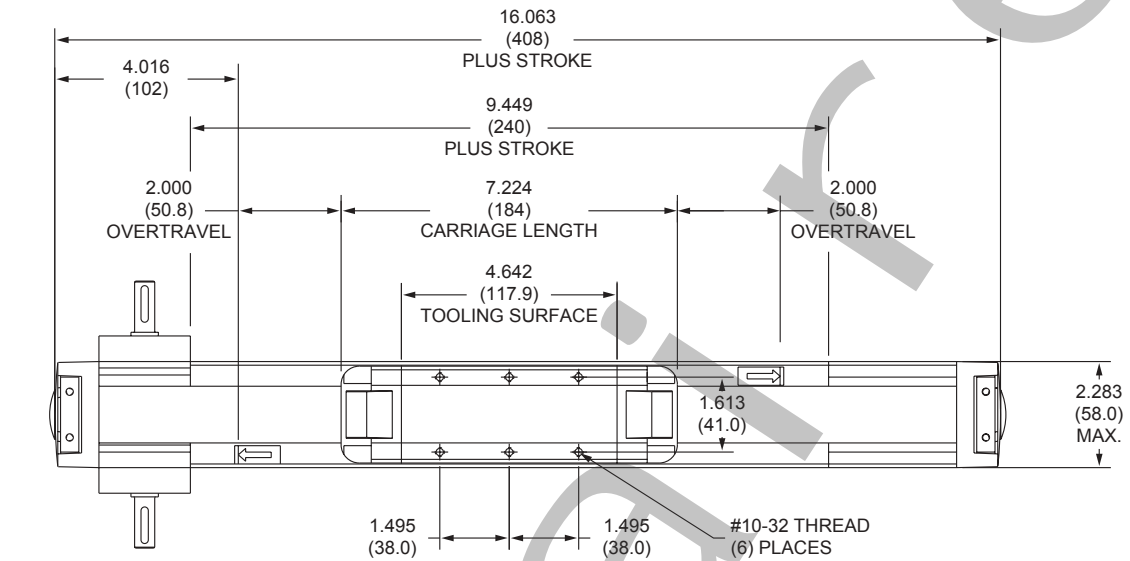
When Ordering Additional Sensors, Mounting Kits, or Shocks

SWITCH DESCRIPTION	STANDARD PART NO.	QUICK DISCONNECT PART NO.
Hall Effect - PNP (Sourcing)	HPNPS31	HPNPQ31
Hall Effect - NPN (Sinking)	HNPNS32	HNPNQ32
Reed Switch	RSS02	RSQ02
90° 5 meter cable	-	PXC90
Straight 5 meter cable	-	PXCST

SERIES SLIDE	BASE MOUNT	ANGLE MOUNT	SHOCK ABSORBER
SH031	MB031	AB031	-
SH056	MB056	AB056	-
SH075	MB075	AB075	SK106
SH106	MB106	AB106	SK106
SH150	MB150	AB150	SK150
SH200	MB200	AB200	SK200
SH250	-	AB200	SK250
SH300	-	-	SK300



BDU 55 Series Dimensions

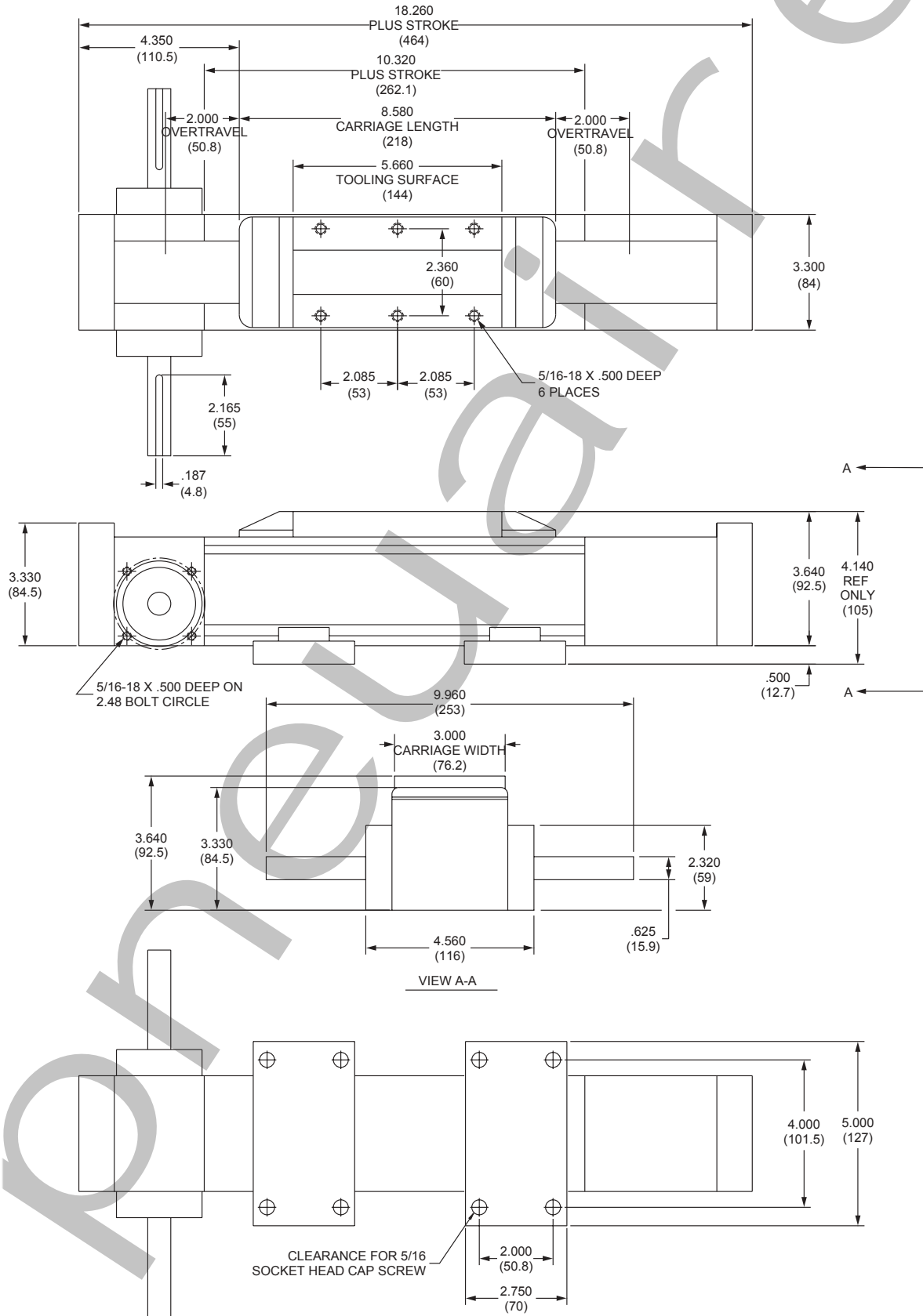




BDU Series
Belt Driven Units



BDU 75 Series Dimensions

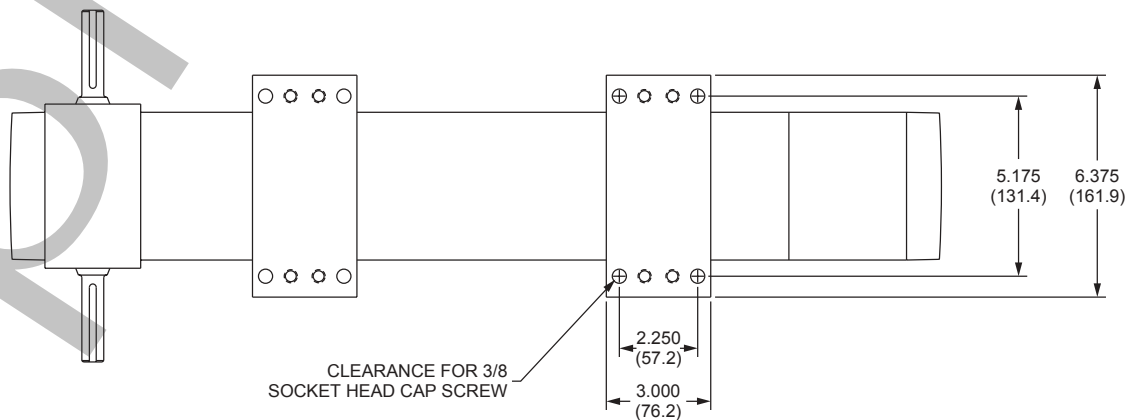
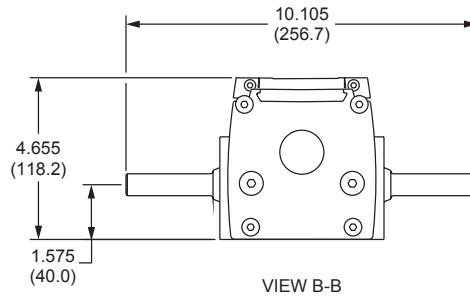
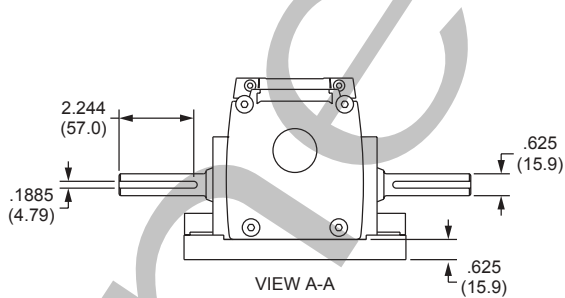
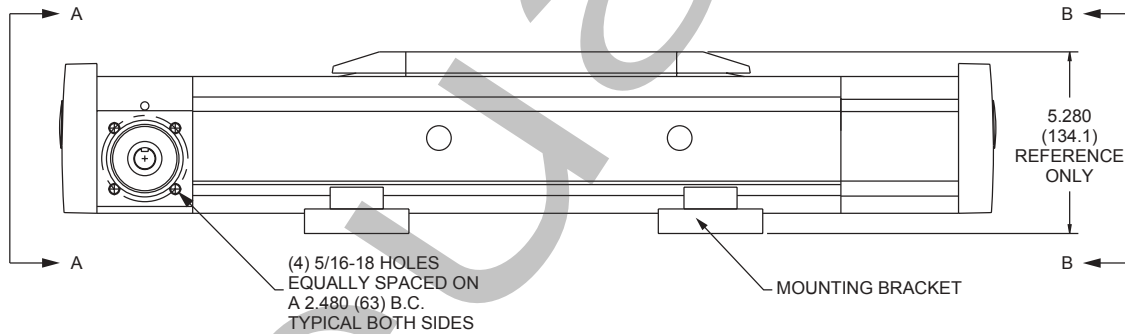
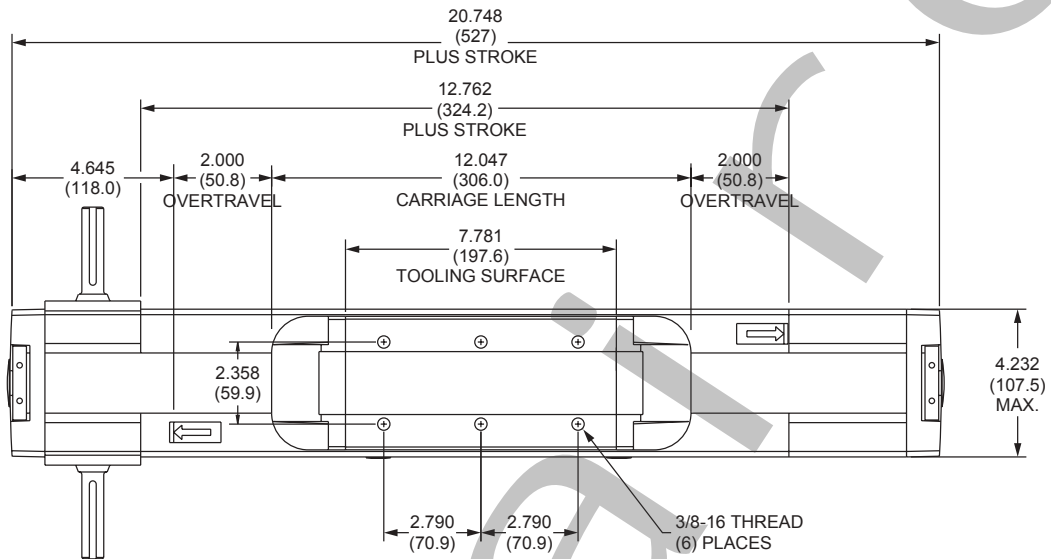




BDU Series
Belt Driven Units



BDU 100 Series Dimensions



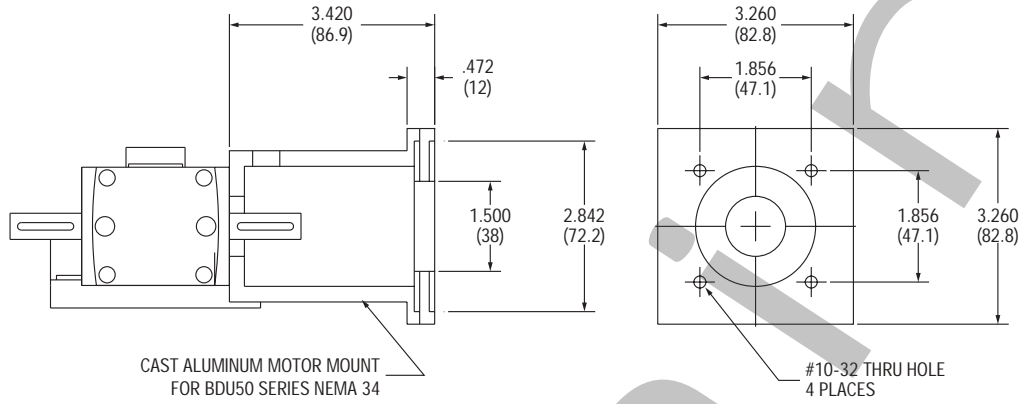


BDU Series
Belt Driven Units



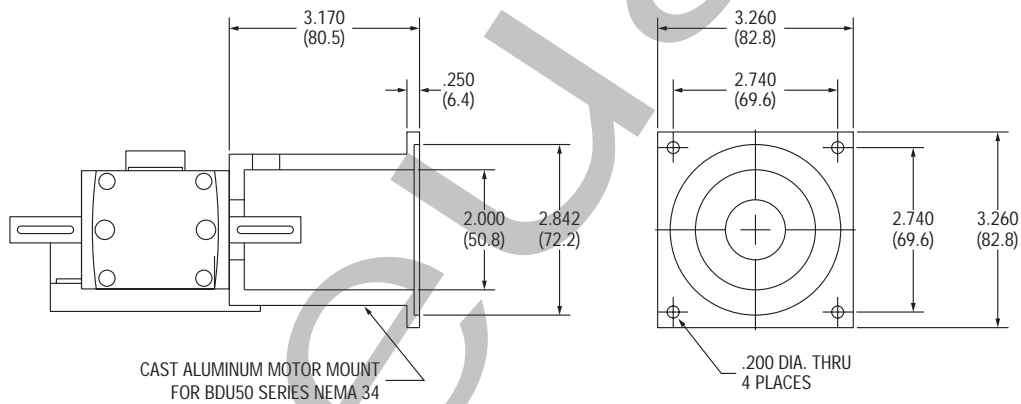
BDU Motor Mountings

BDU 55 NEMA 23



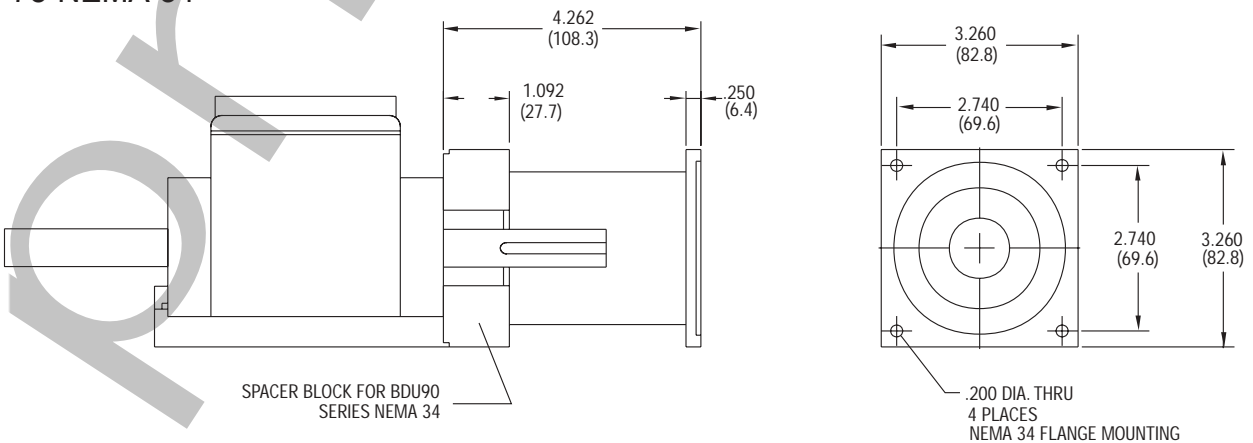
NEMA 23 FLANGE MOUNTING

BDU 55 NEMA 34



NEMA 34 FLANGE MOUNTING

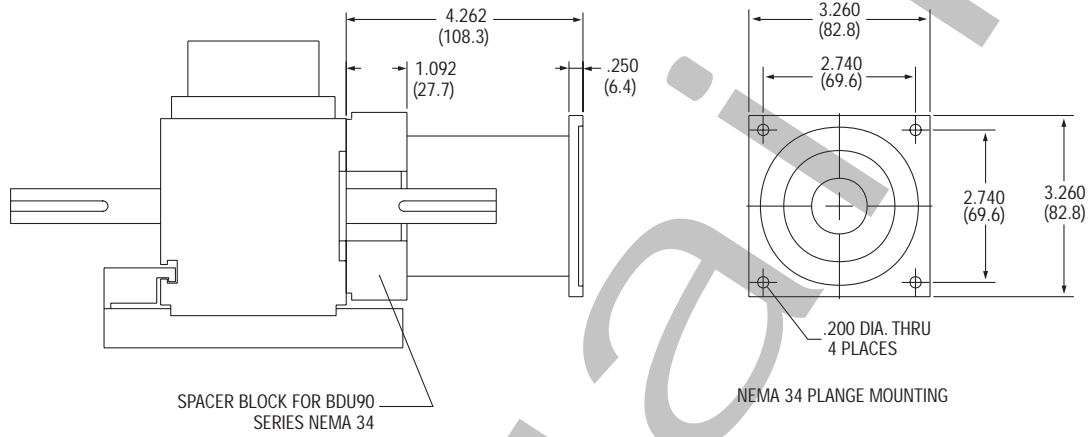
BDU 75 NEMA 34



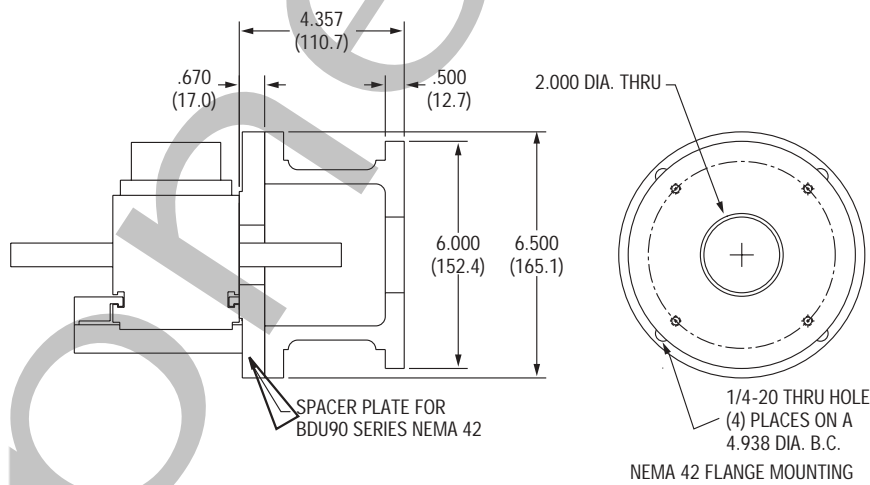


BDU Motor Mountings continued

BDU 100 NEMA 34



BDU 100 NEMA 42

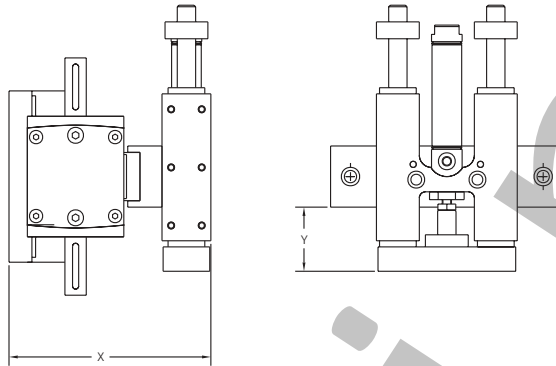




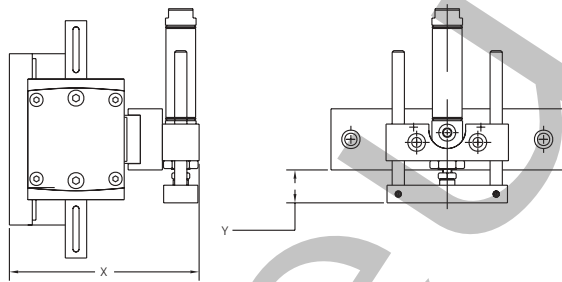
BDU Series
Belt Driven Units



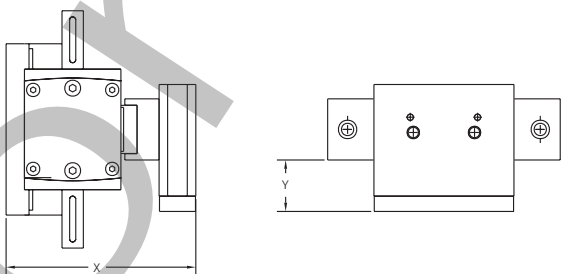
BDU-Series *NuMate*™ Mounting



SLIDE	NUMATE MOUNTING CODE	BDU55		BDU75		BDU100	
		X	Y	X	Y	X	Y
SH056	"A" Mount	4.400	0.830	-	-	-	-
SH075	"B" Mount	1.710	1.710	6.117	0.717	-	-
SH106	"C" Mount	-	-	6.492	1.285	-	-
SH150	"D" Mount	-	-	6.868	1.613	7.660	1.210
SH200	"E" Mount	-	-	-	-	8.160	1.960
SH250	"E" Mount	-	-	-	-	8.530	1.900



SLIDE	NUMATE MOUNTING CODE	BDU55		BDU75	
		X	Y	X	Y
LC056	"A" Mount	4.155	0.094	-	-
LC075	"B" Mount	4.385	0.454	-	-
LC106	"C" Mount	-	-	6.312	0.218
LC150	"D" Mount	-	-	6.619	0.437



SLIDE	NUMATE MOUNTING CODE	BDU55		BDU75	
		X	Y	X	Y
B04	"A" Mount	4.221	0.483	-	-
B06	"A" Mount	4.411	0.644	-	-
B08	"A" Mount	-	-	-	-



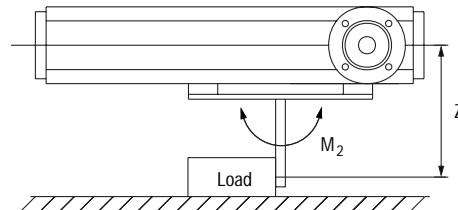
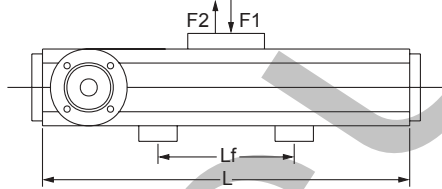
BDU Series
Belt Driven Units



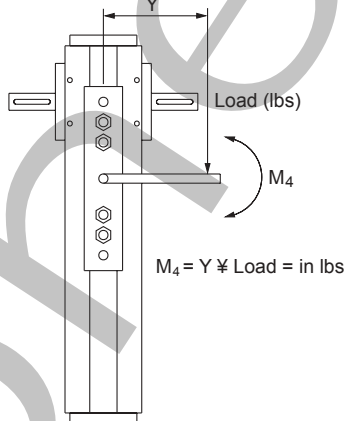
BDU Series Technical Specifications

DESCRIPTION	BDU 55	BDU 75	BDU 100
Maximum Speed	196 in/sec	196 in/sec	196 in/sec
Maximum Stroke	22 feet	22 feet	22 feet
Maximum RPM	2300 rpm	2300 rpm	2500 rpm
Maximum Belt load	90 lbs.	130 lbs.	281 lbs
Drive Ratio	4.13 in/rev	5.11 in/rev	6.93 in/rev
Tooth Pitch	0.1968 in	0.1968 in	0.315 in.
Tooth Pitch Error	0.0096 in/ft cum.	0.0096 in/ft cum.	0.0096 in/ft cum.
Positioning Accuracy	+/- 0.010 in/ft	+/- 0.010 in/ft	+/- 0.010 in/ft
Repeatability	+/- 0.012 in	+/- 0.012 in	+/- 0.012 in
Carriage Weight	2.43 lbs.	4.4 lbs.	4.85 lbs.
Radial Load on Input Shaft	61 lbs.	134 lbs.	225 lbs.
Torsional Load on Output Shaft	13 ft.-lbs.	22 ft.-lbs.	33 ft.-lbs
Drive Pulley Diameter	1.32 in.	1.63 in.	2.3 in.
Drive Pulley Weight	0.132 lbs.	0.28 lbs.	0.813 lbs.
Driven Pulley Diameter	1.32 in.	1.50 in.	2.3 in.
Driven Pulley Weight	0.132 lbs.	0.24 lbs.	0.813 lbs.
Belt Width	0.75 in.	1.57 in.	1.97 in.
Belt Weight	0.135 lbs./ft.	0.4 lbs./ft.	1.511 lbs./ft.
Belt Material	Steel reinforced polychloropren	Steel reinforced polyurethane	Steel reinforced polyurethane
Belt Length	22.4 in + Stroke	44.2 in + Stroke	44.282 in + Stroke
Maximum Humidity	80% Standard	80% Standard	80% Standard
Operating Temperature	0 to 158 F	0 to 158 F	0 to 158 F
Base Weight	8.9 lbs.	13.2lbs.	25.4 lbs.
Adder per inch of Stroke	0.3 lbs.	0.4 lbs.	0.6 lbs

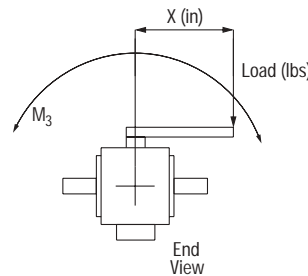
Example: BDU55 with 12" stroke 8.9 + (0.3 x 12)= 12.5 lbs.



$$M_2 = Z \cdot (\text{Load} \cdot \text{Coefficient of Friction}) = \text{in lbs}$$



$$M_4 = Y \cdot \text{Load} = \text{in lbs}$$



$$M_3 = X \cdot \text{Load} = \text{in lbs}$$

BDU Maximum Load Capacities

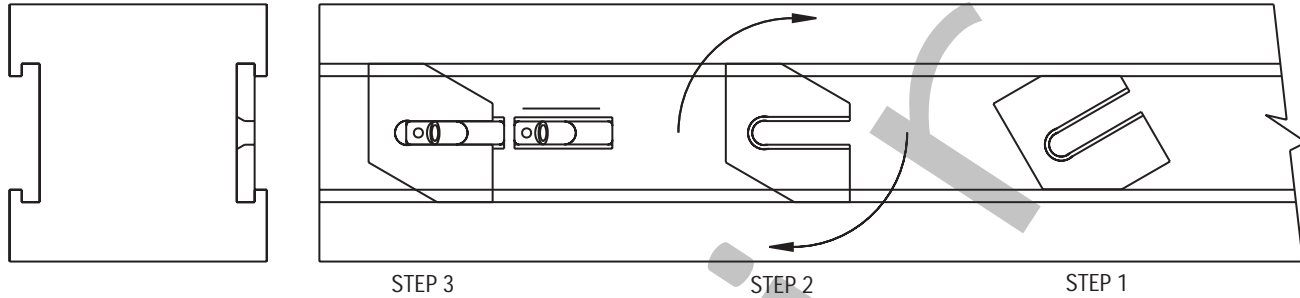
CONFIGURATION	BDU 55	BDU 75	BDU 100
F1	85 lbs.	250 lbs.	660 lbs.
F2	55 lbs.	180 lbs.	480 lbs.
M2	185 in. lbs.	690 in. lbs.	2472 in. lbs.
M3	75 in. lbs.	159 in. lbs.	444 in. lbs.
M4	75 in. lbs.	159 in. lbs.	444 in. lbs.



BDU Series
Belt Driven Units

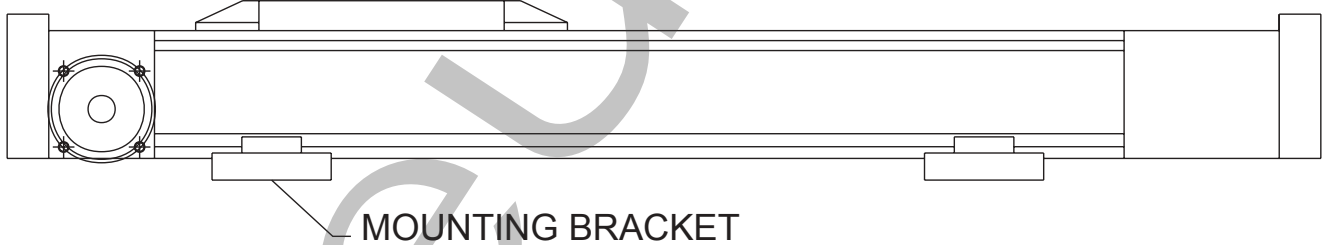


Switch Mounting



POSITION SWITCH MOUNTING FOR 'N 9000 SERIES SWITCH

Mounting Brackets



Mounting Brackets Required

BDU SERIES	BDU 55	BDU 75	BDU 100
STROKE/SUPPORTS REQ'D			
1" to 48"	2	2	2
49" to 84"	3	3	3
85" to 132"	4	4	3
133" to 180"	5	5	4
181" to 240"	6	6	5