

ORDER
ONLINE



Escapements



FE Series

Feed Escapement

We're everywhere you need us to be!



FE Series

Features and Benefits	3-4
How To Order	3
Dimensions and Technical Specifications	4

Pneumatic



FE Series



The FE-Series design uses two double acting cylinders that are cross-ported and internally sequenced for smooth functioning parts regulation. Internal back pressure cross-port design allows both rods to be retracted with the air off to easily clear jammed parts. A four way two position valve is required for operation.

A. Body

High strength hardcoat aluminum.

B. Rods

Ground aluminum, hardcoat anodized, Teflon impregnated non-rotating.

C. Retract Stop Adjustments

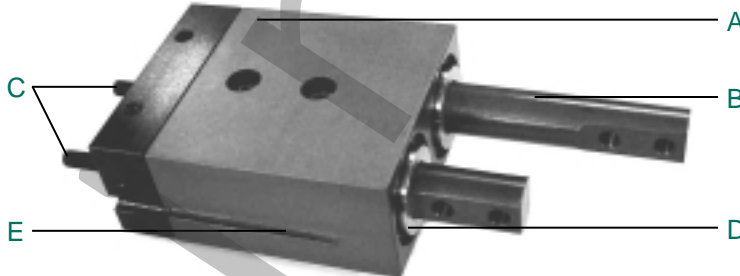
Two adjustment screws allow flexibility to adjust the retract stroke on both rods independently.

D. Bronze Bushings

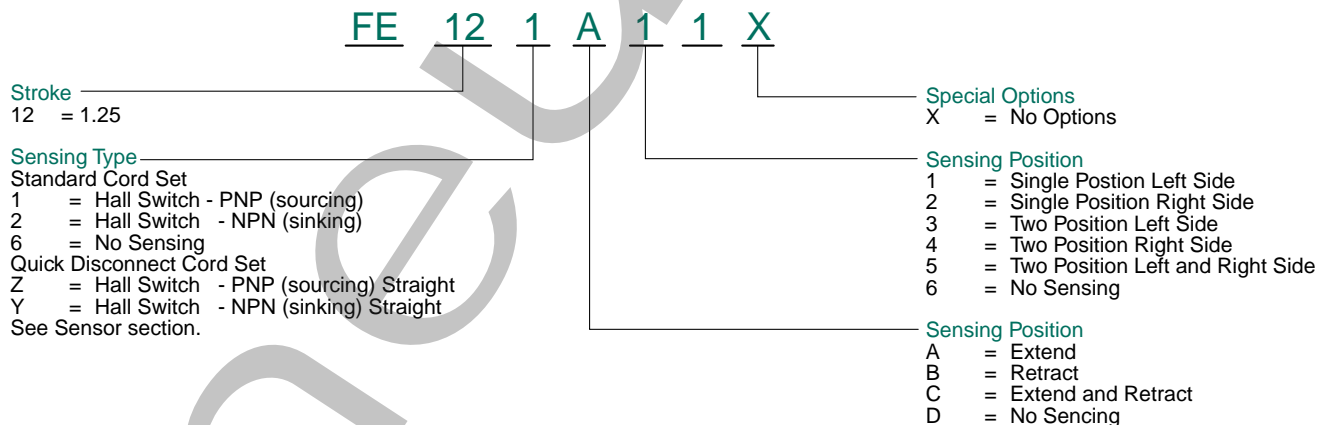
High side load capabilities, self lubricating, long life.

E. Sensing

Reed & Hall effect sensors available to sense extend & retract positions.



How to Order



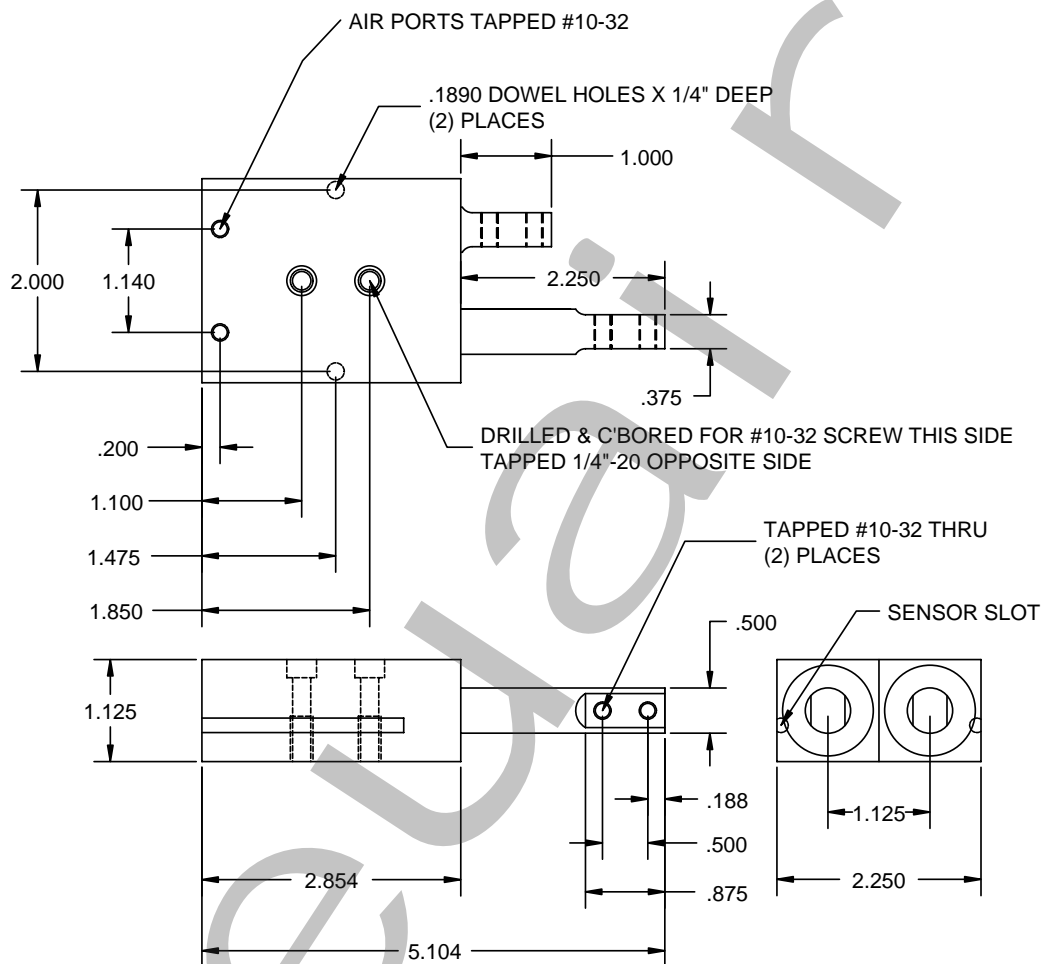
When ordering additional switches:

SWITCH DESCRIPTION	STANDARD PART NO.	QUICK DISCONNECT PART NO.
Hall Effect-PNP (Sourcing)	CS-20TP	CS-20TP-QD
Hall Effect-NPN (Sinking)	CS-20TN	CS-20TN-QD
Reed Switch	CS-20TR	CS-20TR-QD



FE Series

FE Series Dimensions and Technical Specifications



Specifications

FE-12		
Stroke	1.25 in.	
Force Extend @ 100 psi	43.0 lbs.	
Force Retract @ 100 psi	41.0 lbs.	
Time	0.35 Sec.	
Pressure Range	40-120 psi	
Side Play	+/- 0.001 in.	
Displacement	0.48 cu. in.	
Weight	12.0 oz.	
LOAD CAPACITY	STATIC	DYNAMIC
Mx	150	13 in.-lbs.
My	150	13 in.-lbs.
Mz	150	13 in.-lbs.

