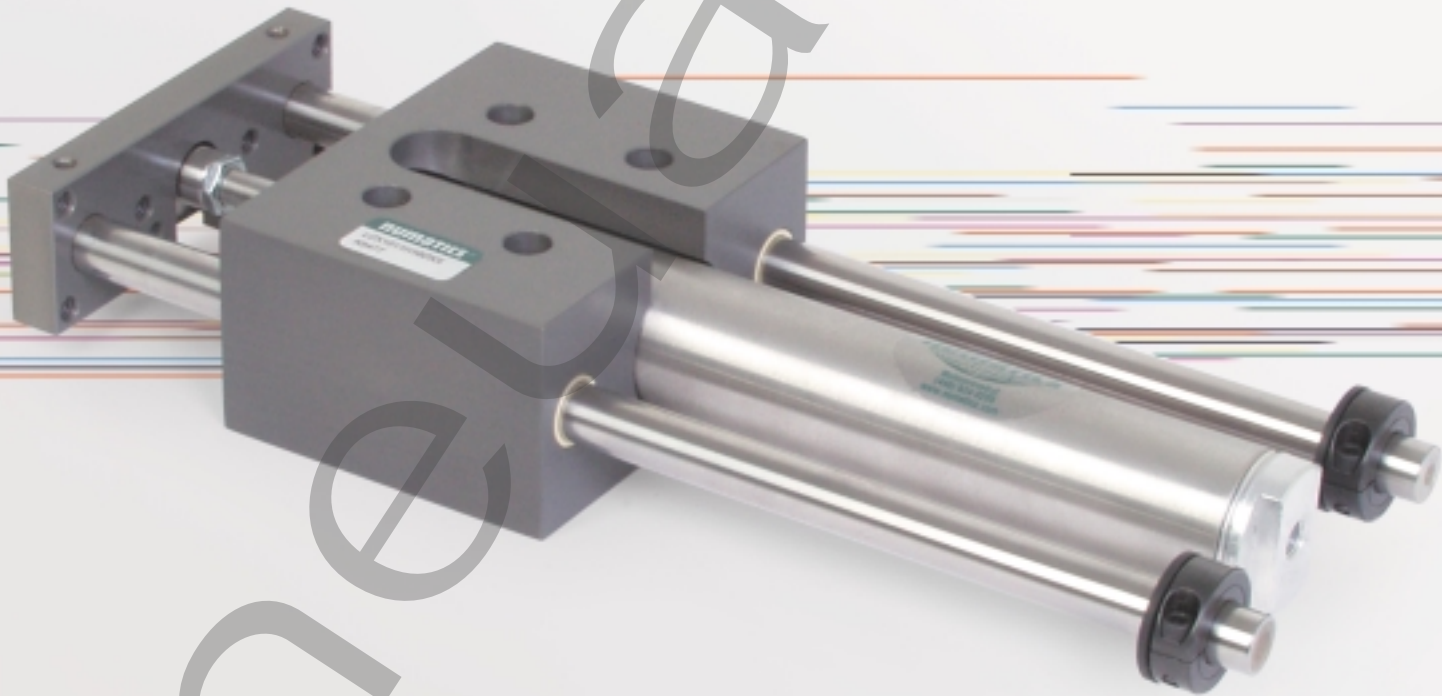


ORDER
ONLINE



Slides



LCX Series

Linear Slide

We're everywhere you need us to be!



LCX Series

Features and Benefits	3-5
How to Order	3
Dimensions	4
Technical Specifications	5

Pneuhair



LCX Series

LCX Series

The "LCX combines cost-effectiveness with proven dependability. An economical alternative with greater load carrying capabilities.

- Low Cost
- High Load Capability
- Stainless Steel Shafts Available
- Engineered Plastic Polymer Bearing
- Available in 3 Bore Sizes

A. Body:

Hardcoat anodized aluminum.....Lightweight, durable, high strength Increased load carrying capability

B. Alignment Coupler:

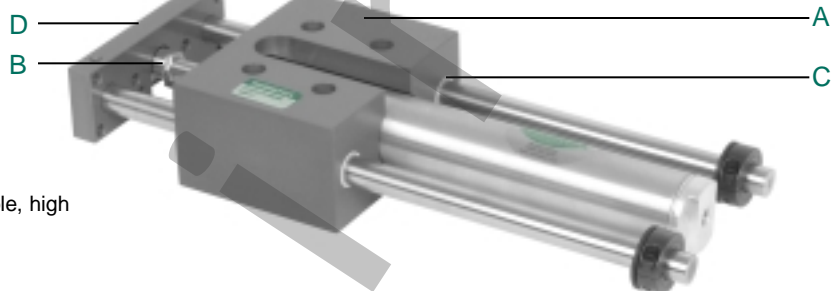
360 Degrees of float.....isolates air cylinder from destructive side loads maximum cylinder life

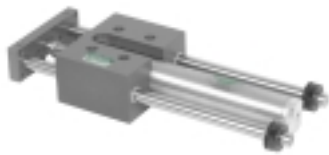
C. Bushings:

Engineered plastic polymer.....Low friction, high durability, no lubrication required Maximum rigidity.....superior rod diameter to bushing length ratio

D. NuMate™ Mounting:

Direct mount mounting system.....Mount other Numatics products directly to tooling plate





LCX Series

How to Order

LCX 075 04 H 1 6 D XX

Bore Size

- 075 = 3/4"
- 106 = 1-1/16"
- 150 = 1-1/2"

Standard Stroke

- X5 = 1/2" 08 = 8"
- 01 = 1" 09 = 9"
- X9 = 1-1/2" 10 = 10"
- 02 = 2" 11 = 11"
- 03 = 3" 12 = 12"
- 04 = 4" 13 = 13"
- 05 = 5" 14 = 14"
- 06 = 6" 15 = 15"
- 07 = 7"

Guide Shaft Type

- H = Hardened Steel
- S = Stainless Steel

Cylinder Type**

- 1 = Buna-N Seals
- 2 = Viton Seals / No Magnet
- 3 = Buna-N Seals w/Cushions*
- 4 = Viton Seals / with Magnet

*Head cushion factory set available on bore sizes 106 and 150.

**Max temperature for LCX Series is 140°F.

Options

- XX = No Options
 - SE = Stop Collars for Extend Stroke Adjust*
 - SR = Stop Collars for Retract Stroke Adjust*
 - SB = Stop Collars for Extend and Retract
- *Stop collars will be stainless when the guide shafts are stainless.

Sensing Position

- A = Single Position Extend
- B = Single Position Retract
- C = Two Position Sensing
- D = No Sensing

Sensing Type

Standard Cord Set

- 1 = Hall Effect - PNP (sourcing)
- 2 = Hall Effect - NPN (sinking)
- 3 = Reed Switch
- 4 = Prox Switch on Cylinder - PNP (sourcing)
- 5 = Prox Switch on Cylinder - NPN (sinking)
- 6 = No Sensing

Quick Disconnect Cord Set

- Z = Hall Effect - PNP (sourcing)
- Y = Hall Effect - NPN (sinking)
- X = Reed Switch
- W = Prox Switch on Cylinder - PNP (sourcing) Straight
- V = Prox Switch on Cylinder - NPN (sinking) Straight
- U = Prox Switch on Cylinder - PNP (sourcing) 90 Deg.
- T = Prox Switch on Cylinder - NPN (sinking) 90 Deg.

When ordering additional accessories:

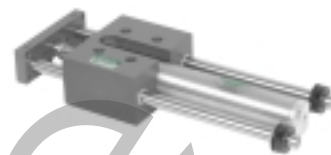
SWITCH DESCRIPTION	STANDARD PART NO.	QUICK DISCONNECT PART NO.
Hall Effect - PNP (Sourcing)	HPNPS31*	HPNPQ31*
Hall Effect - NPN (Sinking)	HNPNS32*	HNPNQ32*
Reed Switch	RSS02*	RSQ02*
Prox Switch - PNP (Sourcing)	SWPP - 0001	SWPP - QS01
Prox Switch - NPN (Sinking)	SWPN - 0001	SWPN - QS01
Prox Switch - PNP 90°	-	SWPP - QL01
Prox Switch - NPN 90°	-	SWPN - QL01
90° 5 meter cable	-	PXC90
Straight 5 meter cable	-	PXCST

*Bands and tracks required for mounting.

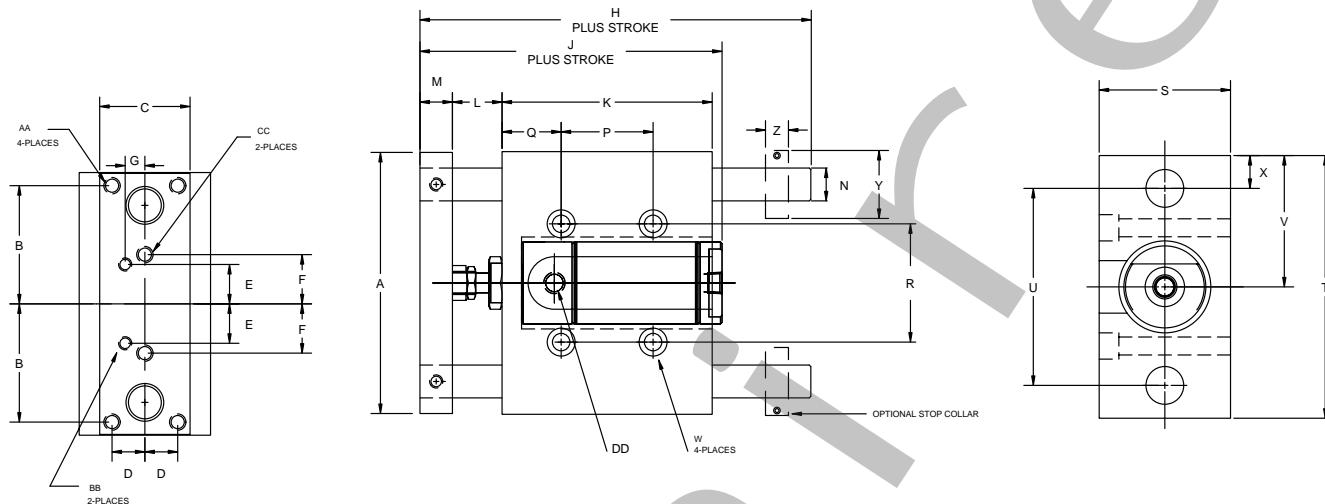
Reference bracket in the Switch Application Chart in the Sensor section.



LCX Series

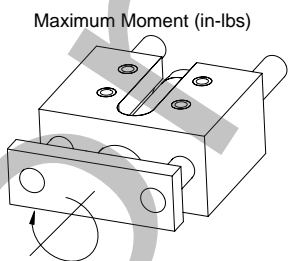
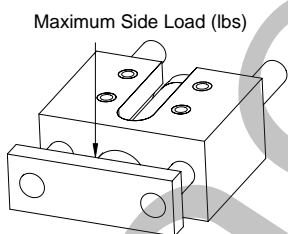


LCX Series Dimensions and Specifications



BORE	A	B	C	D	E	F	G	H	J	K	L	M	N	P
0.750	3.42	1.50	0.94	0.31	0.50	0.62	0.18	4.06	3.75	2.28	0.62	0.47	0.37	0.94
1.062	3.90	1.75	1.40	0.51	0.62	0.75	0.23	4.66	4.24	2.57	0.82	0.48	0.50	1.37
1.500	4.97	2.25	1.72	0.62	0.75	0.93	0.37	6.43	4.75	4.00	0.94	0.61	0.62	1.75

BORE	Q	R	S	T	U	V	W	X	Y	Z	AA	BB	CC	DD
0.750	0.51	1.50	1.25	3.40	2.50	1.70	C'bored for 1/4 SHCS	0.45	0.87	0.43	10-32 thru	6-32 thru	10-32 thru	1/8 NPTF
1.062	0.38	1.87	2.00	3.95	3.00	1.97	C'bored for 5/16 SHCS	0.47	1.12	0.41	1/4-20 thru	10-32 thru	1/4-20 thru	1/8 NPTF
1.500	1.12	2.25	2.50	5.00	3.75	2.50	C'bored for 5/16 SHCS	0.62	1.29	0.43	5/16-18 thru	1/4-20 thru	5/16-18 thru	1/8 NPTF



STROKE	Maximum Side Loads (lbs)			Maximum Moment (in-lbs)		
	LCX 075	LCX 106	LCX 150	LCX 075	LCX 106	LCX 150
1	102	165	273	108	259	546
2	82	136	233	87	212	466
3	66	116	199	70	181	398
4	55	98	170	58	153	340
5	45	86	144	48	134	288
6	39	74	124	41	116	248
7	34	65	109	36	101	218
8	30	57	97	32	89	194
9	26	52	87	28	81	174
10	24	47	79	26	73	158
11	22	43	72	23	67	144
12	20	39	66	21	61	132
13	19	36	62	20	57	124
14	17	34	58	19	53	117
15	16	32	55	17	50	110

Unit Output Force

	LCX 075	LCX 106	LCX 150
Extend Force (lbs)	0.44	0.88	1.76
Retract Force (lbs)	0.39	0.81	1.61

Multiply force factor X input pressure in psi
 Example: LCX075 extend force @ 70psi .44 X 70= 30.8

Static Rating