

ORDER
ONLINE



Grippers



PG Series

Low Profile Grippers

We're everywhere you need us to be!



PG Series Parallel Gripper	3-5
Features and Benefits	3
How To Order	3
PGS25 & PGL25 Dimensions	4
Technical Specifications	4
PGS35 & PGL35 Dimensions	5
Technical Specifications	5

Pneumatic



PG Series
Parallel Gripper



Gripper summary of Operation

PG-Series Has true parallel motion that is generated by a pinion mechanism Powered by a double acting piston.

A. Body

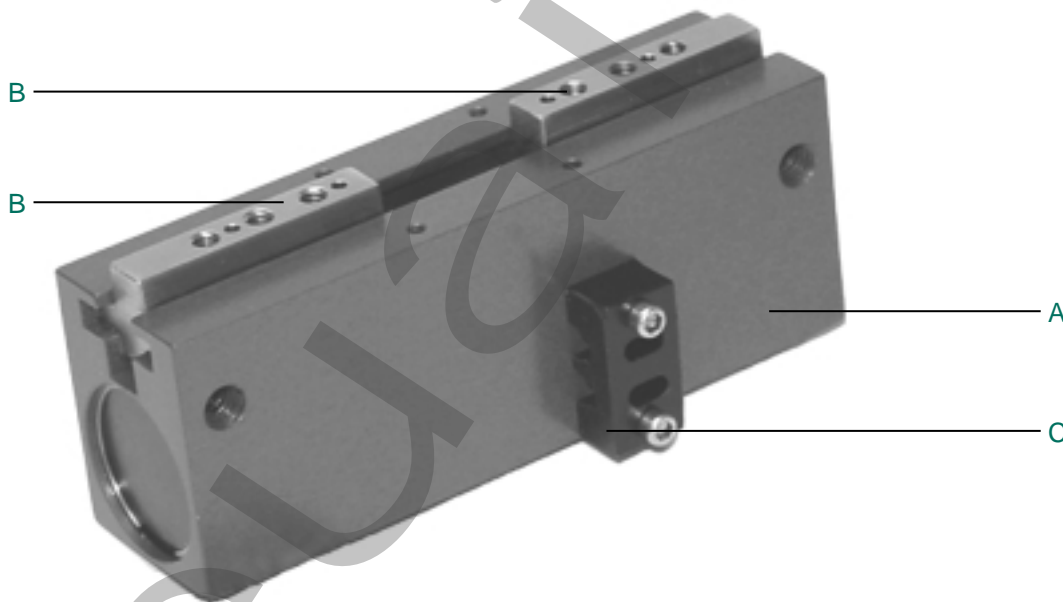
Hardcoat Anodized, Teflon impregnated inside & out.
2 different strokes same size low profile body.

B. Jaws

Jaws are aluminum bronze alloy and T-Slot style to prevent Jaw breakage and offers superior load bearing capabilities.

C. Sensing

Reed & Hall effect sensing is available to sense open & closed position



How to Order

PG S 35 1 1 C X

Gripper Stroke

S = Short Stroke
L = Long Stroke

Gripper Series

25
35

Seal Type

1 = Buna-N
2 = Viton

Special Options

X = No Options

Sensing Position

A = Single Position Open
B = Single Position Close
C = Two Position Sensing
D = No Sensing

Sensing Type

Standard Cord Set
1 = Hall Switch - PNP (sourcing)
2 = Hall Switch - NPN (sinking)
6 = No Sensing
Quick Disconnect Cord Set
Z = Hall Switch - PNP (sourcing)
Y = Hall Switch - NPN (sinking)
See Sensor section.

When ordering additional switches:

SWITCH DESCRIPTION	STANDARD PART NO.	QUICK DISCONNECT PART NO.
Hall Effect-PNP (Sourcing)	CS-20TP	CS-20TP-QD
Hall Effect-NPN (Sinking)	CS-20TN	CS-20TN-QD

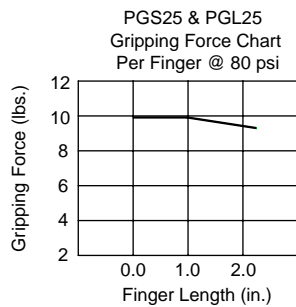


PG Series
Parallel Gripper

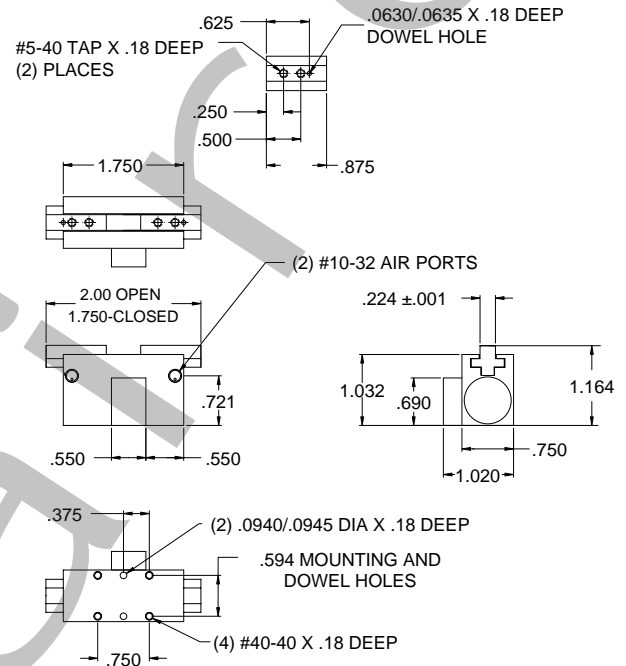


Specifications

	PGS25	PGL25
Grip Force @ 100 psi	27 lbs	27 lbs
Stroke	0.25	0.50
Repeatability	+/- .001	+/- .001
Bore Dia.	0.625	0.625
Operating Temperature		
Buna-N	-30° to 180°F	-30° to 180°F
Viton	-20° to 300°F	-20° to 300°F
Max. Actuation Speed	0.12 sec	0.12 sec
Displacement	0.3 cu in	0.3 cu in
Maximum Pressure	120 psi	120 psi
Unit Weight	2 oz	2 oz



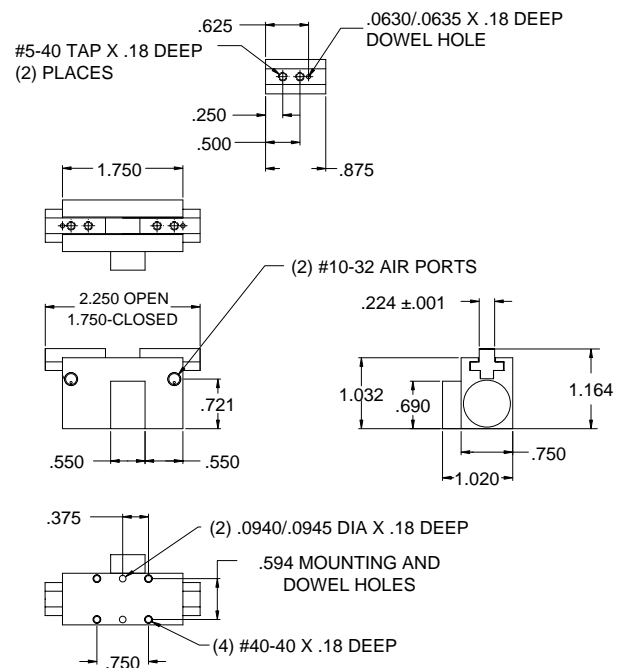
PGS25



Grip Force vs. Finger Length

L-FINGER LENGTH	PGS25	PGL25
1	25 lbs.	25 lbs.
2	20 lbs.	20 lbs.
3	15 lbs.	15 lbs.
4	N/A	N/A
5	N/A	N/A

PGL25

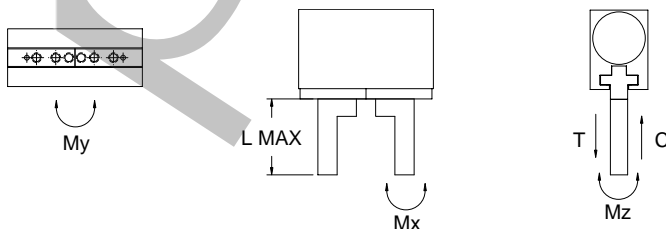


Static Condition

LOAD CAPACITY	PGS25	PGL25
C-compression	65 lbs.	65 lbs.
T-tension	65 lbs.	65 lbs.
Mx	45 lbs.	45 lbs.
My	60	60
Mz	40	45

Dynamic Condition

LOAD CAPACITY	PGS25	PGL25
C-compression	25 lbs.	25 lbs.
T-tension	25 lbs.	25 lbs.
Mx	20 in.-lbs.	20 in.-lbs.
My	25 in.-lbs.	25 in.-lbs.
Mz	20 in.-lbs.	20 in.-lbs.



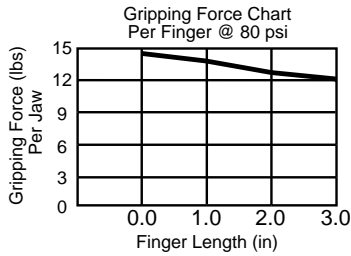


PG Series
Parallel Gripper

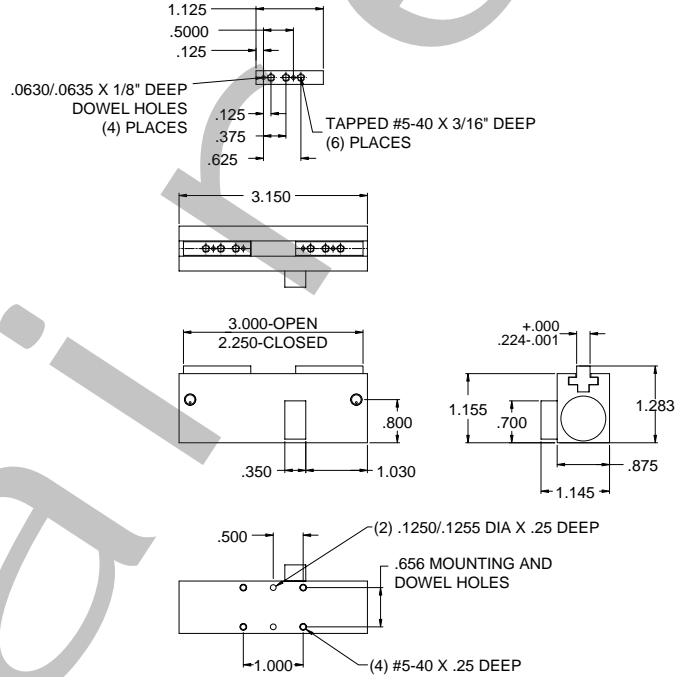


Specifications

	PGS35	PGL35
Grip Force @ 100 psi	35 lbs	35 lbs
Stroke	0.75	1.00
Repeatability	+/- .001	+/- .001
Bore Dia.	0.70	0.70
Operating Temp.		
Buna-N	-30° to 180°F	-30° to 180°F
Viton	-20° to 300°F	-20° to 300°F
Max. Actuation Speed	0.12 sec	0.12 sec
Displacement	0.38 cu in	0.38 cu in
Maximum Pressure	120 psi	120 psi
Unit Weight	5 oz	5 oz



PGS35



Grip Force vs. Finger Length

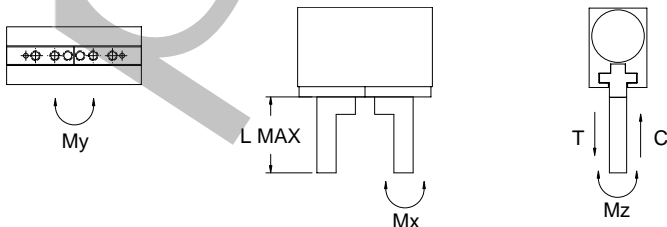
L-FINGER LENGTH	PGS35	PGL35
1	28 lbs.	28 lbs.
2	26 lbs.	26 lbs.
3	24 lbs.	24 lbs.
4	19 lbs.	19 lbs.
5	8 lbs.	8 lbs.

Static Condition

LOAD CAPACITY	PGS35	PGL35
C-compression	80 lbs.	80 lbs.
T-tension	80 lbs.	80 lbs.
Mx	80 in.-lbs.	80 in.-lbs.
My	100 in.-lbs.	100 in.-lbs.
Mz	80 in.-lbs.	80 in.-lbs.

Dynamic Condition

LOAD CAPACITY	PGS35	PGL35
C-compression	45 lbs.	45 lbs.
T-tension	45 lbs.	45 lbs.
Mx	30 in.-lbs.	30 in.-lbs.
My	40 in.-lbs.	40 in.-lbs.
Mz	30 in.-lbs.	30 in.-lbs.



PGL35

