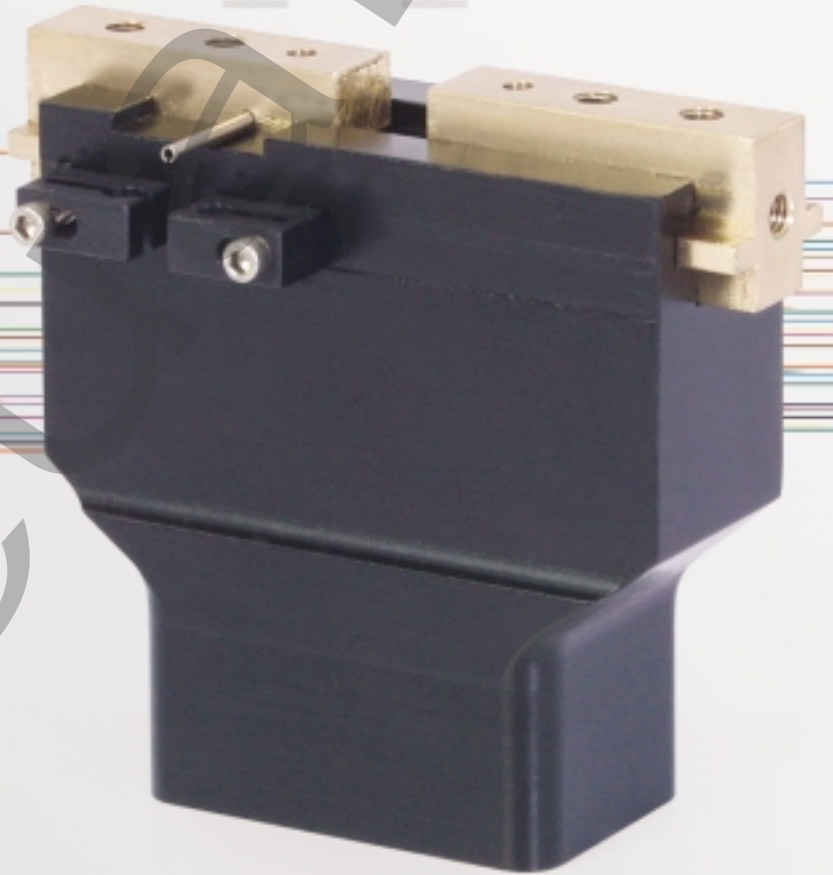


ORDER  
ONLINE



Grippers



***RPG Series***

***Parallel Grippers***

*We're everywhere you need us to be!*



## RPG Series

Features and Benefits .....	3-4
How To Order .....	3
Dimensions and Technical Specifications .....	4

Pneumatic



RPG Series



## Gripper Summary of Operation

RPG-Series Has true parallel motion that is generated by a double acting piston attached to the pinion mechanism with a linkage that is guided in the body for precise centering.

### A. Body

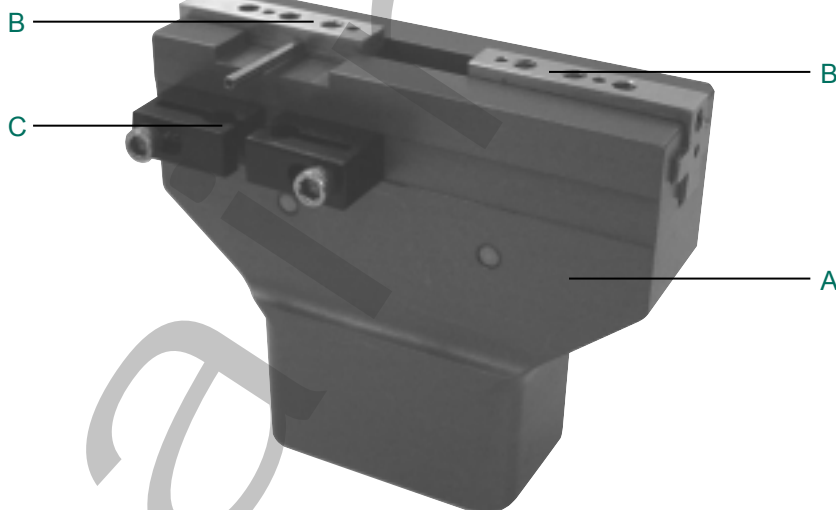
Hardcoat Anodized, Teflon impregnated inside & out  
High force to weight ratio.

### B. Jaws

Jaws are aluminum bronze alloy to prevent Jaw breakage. T-Slot style Jaws offers superior load bearing capabilities.

### C. Sensing

Proximity switches available for sensing open and Closed positions.



## How to Order

RPG 35 1 4 C X

### Gripper Series

25  
35  
80

### Seal Type

1 = Buna-N  
2 = Viton

### Special Options

X = No Options

### Sensing Position

A = Single Position Open  
B = Single Position Close  
C = Two Position Sensing  
D = No Sensing

### Sensing Type

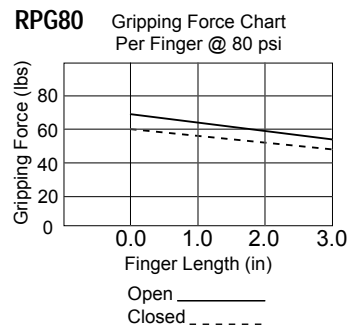
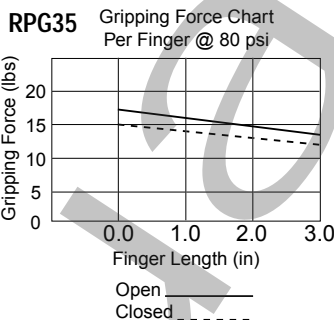
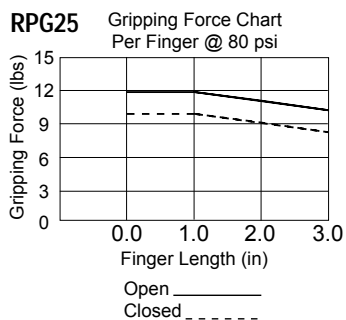
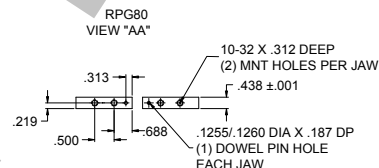
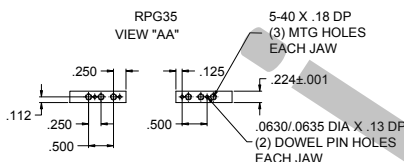
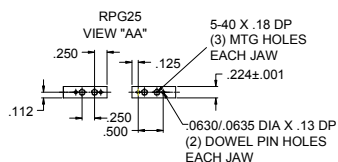
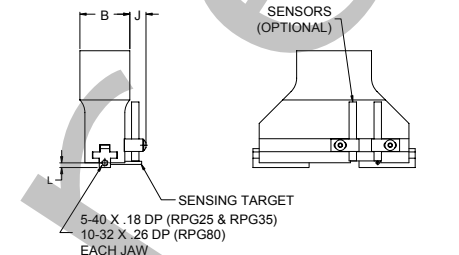
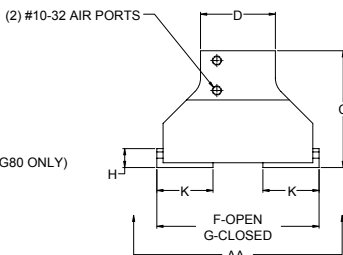
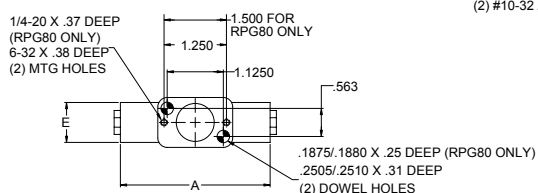
Standard Cord Set  
4 = Prox Switch - PNP (sourcing)  
5 = Prox Switch - NPN (sinking)  
6 = No Sensing  
Prox switches are 4 mm diameter.

## When ordering additional switches:

SWITCH DESCRIPTION	STANDARD PART NO.
Hall Effect-PNP (Sourcing)	PX04PS
Hall Effect-NPN (Sinking)	PX04NS

RPG Series

RPG Series Dimensions and Technical Specifications



RPG Series Dimensions

	RPG25	RPG35	RPG80
A	2.000	2.750	3.000
B	1.000	1.000	1.250
C	1.840	2.340	3.192
D	1.500	1.500	2.000
E	0.800	0.800	1.062
F	2.250	3.250	4.250
G	1.750	2.250	3.125
H	0.400	0.470	0.741
J	0.500	0.500	0.500
K	0.870	1.120	1.563
L	0.094	0.094	0.210

Specifications

	RPG25	RPG35	RPG80
Grip Force @ 100 psi	25 lbs	36 lbs	80 lbs.
Stroke	0.5	1.0	1.125
Repeatability	+/- .001	+/- .001	+/- .001
Bore Dia.	0.625	.750	1.000
Operating Temp.			
Buna-N	-30° to 180°F	-30° to 180°F	-30° to 180°F
Viton	-20° to 350°F	-20° to 350°F	-20° to 350°F
Max. Actuation Speed	0.12 sec	0.15 sec	.21
Displacement	0.10 cu in	0.22 cu in	.5 cu in
Maximum Pressure	120 psi	120 psi	120 psi
Unit Weight	5 oz	8 oz	1.0 lbs.

Static Condition

LOAD CAPACITY	RPG25	RPG35	RPG80
C-compression	50 lbs.	60 lbs.	100 lbs.
T-tension	50 lbs.	60 lbs.	100 lbs.
Mx	50 in.-lbs.	100 in.-lbs.	200 in.-lbs.
My	60 in.-lbs.	120 in.-lbs.	250 in.-lbs.
Mz	50 in.-lbs.	100 in.-lbs.	200 in.-lbs.

Dynamic Condition

LOAD CAPACITY	RPG25	RPG35	RPG80
C-compression	15 lbs.	20 lbs.	30 lbs
T-tension	15 lbs.	20 lbs.	30 lbs
Mx	12 in.-lbs.	25 in.-lbs.	50 in.-lbs
My	15 in.-lbs.	30 in.-lbs.	60 in.-lbs
Mz	12 in.-lbs.	25 in.-lbs.	50 in.-lbs

