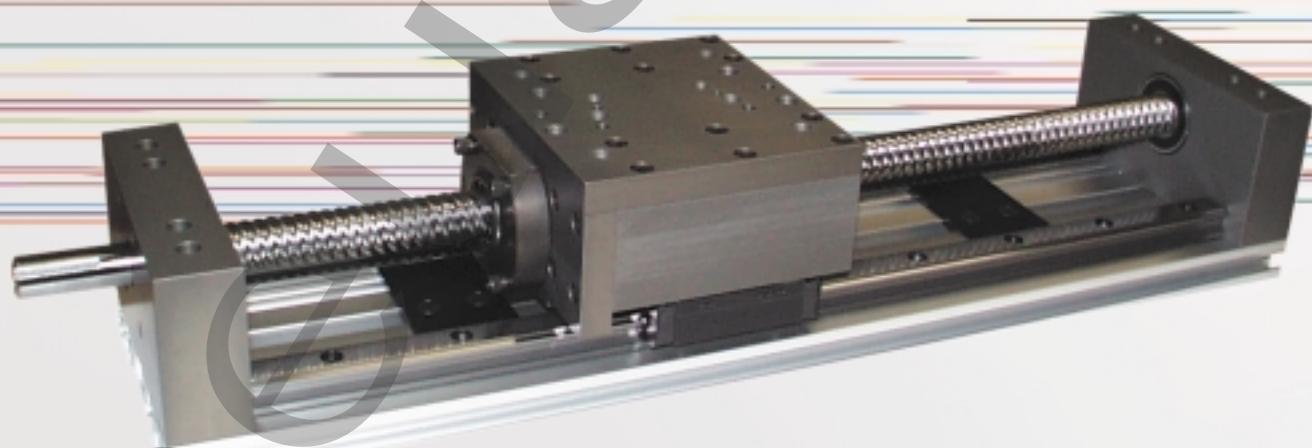


ORDER  
ONLINE



Electrical  
Actuator



# ***SRS Series***

***Twin Square Rail Ball Screw Gantry System***

*We're everywhere you need us to be!*



## SRS Series

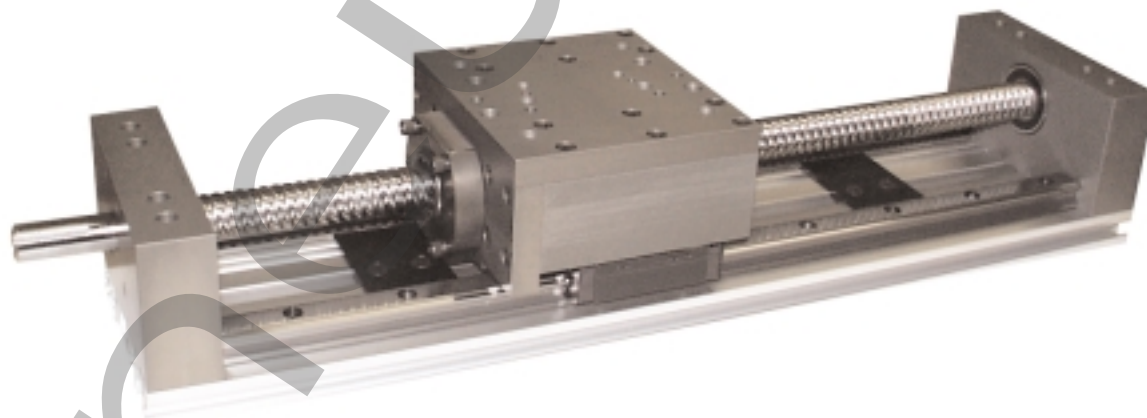
Features and Benefits .....	3-5
How to Order .....	3
Technical Specifications .....	4
Critical Speed .....	4
Dimensions .....	5
Load Ratings .....	5

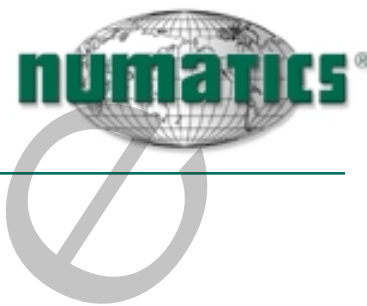
phenelair



## SRS - Twin Square Rail Ball Screw Gantry System

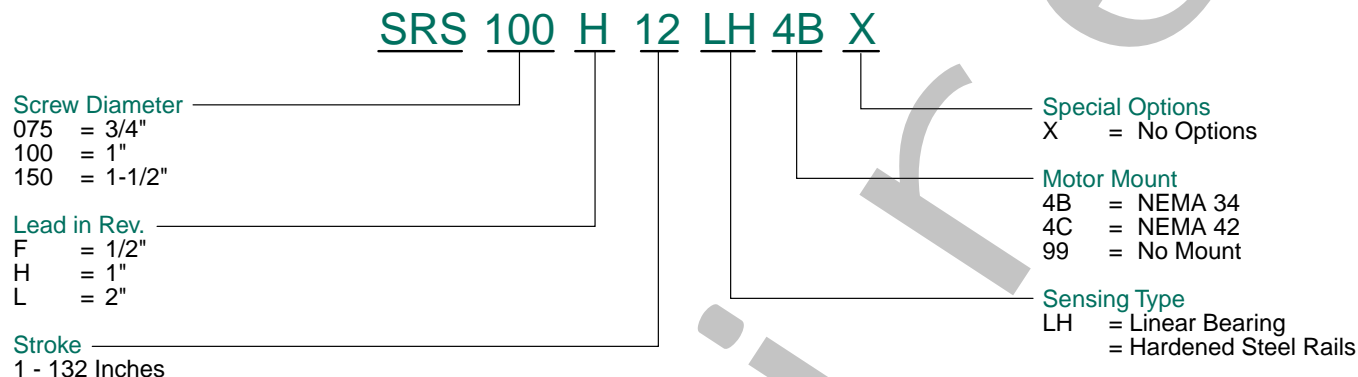
- \* The ball screw gantry provides precise positioning and high load carrying capacity.
- \* Thrust loads up to 7600 lbs.
- \* Suitable for mounting in any position; horizontal, vertical, on an incline, or inverted.
- \* Low torque required to drive the load due to high efficiency ball screw.
- \* Linear bearings provide low stick slip for precise positioning and ease of moving the load.
- \* Precision linear rail system supports the load through the entire stroke length.
- \* Rugged aluminum extrusion supports the linear rail system through the entire stroke length.
- \* Motor mounting for all NEMA 34 and 42 frame motors.
- \* NEMA standard gearheads mount directly to the unit.
- \* Stroke lengths to 11 feet.
- \* NU-MATE mounting pattern is standard.
- \* Minimal deflection due to the square rail support system.
- \* Bellows available for severe duty applications.
- \* Recirculating twin ball tracks in the screw and on the rails provide greater accuracy.
- \* Load locking spring prevents load from free falling in the event the ball bearings are lost from the nut.
- \* Brush wipers prevent contaminants from entering the nut.





SRS Series

How to Order



SRS Series Technical Specifications

DESCRIPTION	SRS075	SRS100	SRS150
Maximum Stroke	11 feet	11 feet	11 feet
Maximum Thrust Load-Dynamic	1800 lbs.	3450 lbs.	5200 lbs.
Accuracy	+/- 0.005	+/- 0.005	+/- 0.005
Repeatability	+/- 0.005	+/- 0.005	+/- 0.005
Screw Diameter	0.750	1.00	1.425
Screw Lead	0.500	1.00	2.000
Overall Length	9.22+stroke	12.31+stroke	12.31+stroke

Critical Speed Calculations

SRS075F

$$1 \times (4.76 \times 10^6) \times \left( \frac{0.697}{(\text{Stroke} + 6.74)^2} \right) = A \quad A \times 0.8 = B \quad \frac{B}{60} = C \quad C \times 0.5 = \text{In./Sec.}$$

SRS100H

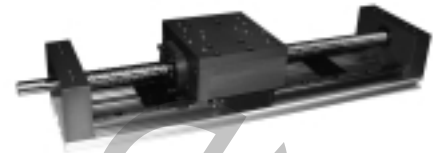
$$1 \times (4.76 \times 10^6) \times \left( \frac{0.911}{(\text{Stroke} + 9.31)^2} \right) = A \quad A \times 0.8 = B \quad \frac{B}{60} = C \quad C \times 1.0 = \text{In./Sec.}$$

SRS150L

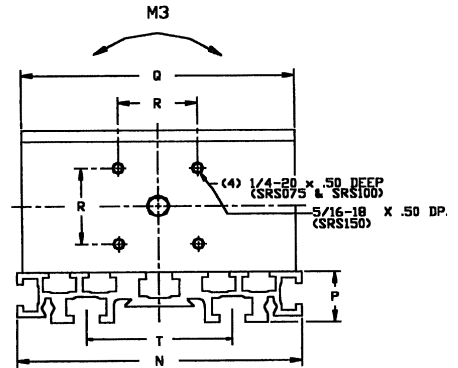
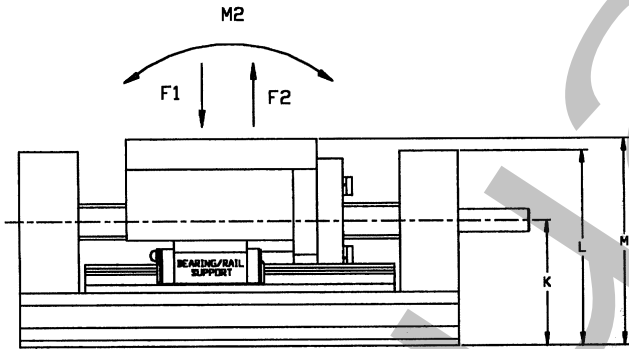
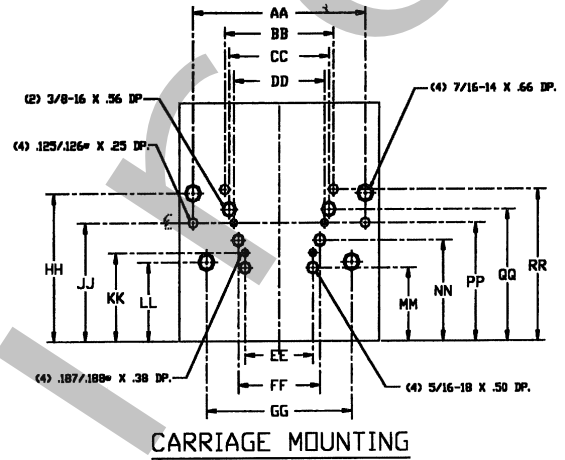
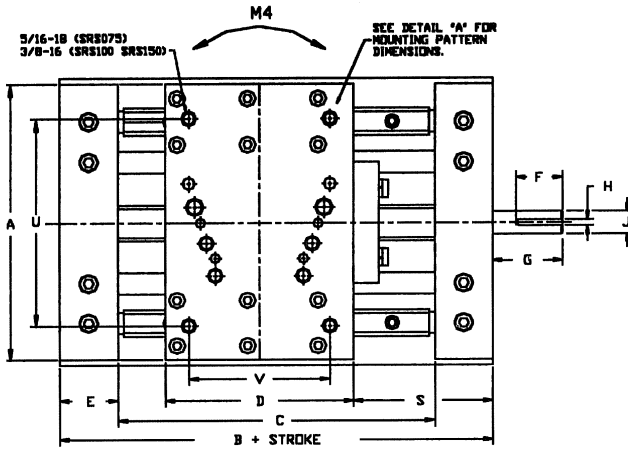
$$2.23 \times (4.76 \times 10^6) \times \left( \frac{1.323}{(\text{Stroke} + 9.31)^2} \right) = A \quad A \times 0.8 = B \quad \frac{B}{60} = C \quad C \times 2.0 = \text{In./Sec.}$$



SRS Series



SRS Series Dimensions



NOTE: UNIT IS DRAWN AT 0° STROKE

	A	B	C	D	E	F	G	H	J	K	L	M	N	P	Q	R	S	T
SRS075F	6.00	9.22	6.74	4.00	1.24	1.00	1.50	0.125	0.50	2.65	4.13	4.38	6.25	1.13	6.00	1.75	2.98	3.50
SRS100H	6.11	12.31	9.31	5.50	1.50	1.09	2.00	0.187	0.75	3.05	4.30	4.93	6.25	1.13	6.25	1.75	3.91	3.50
SRS150L	6.25	12.31	9.31	6.00	1.50	1.58	2.00	0.250	1.00	3.23	5.13	5.76	6.25	1.13	6.25	1.80	3.81	3.50

	U	V	AA	BB	CC	DD	EE	FF	GG	HH	JJ	KK	LL	MM	NN	PP	QQ	RR
SRS075F	3.00	3.00	-	3.00	2.75	2.50	1.87	2.25	-	-	3.05	2.29	-	1.91	2.61	3.05	3.40	3.90
SRS100H	4.00	4.00	4.75	3.00	2.75	2.50	-	2.25	4.00	3.80	3.05	-	2.05	-	2.61	3.05	3.40	3.90
SRS150L	4.00	4.00	4.75	3.00	2.75	2.50	-	2.25	4.00	3.80	3.05	-	2.05	-	2.61	3.05	3.40	3.90

Moment Load Rating

	SRS075F	SRS100H	SRS150L
F1	4859 lbs	11,448 lbs	16,524 lbs
F2	2998 lbs	7667 lbs	9792 lbs.
M2	990 in/lbs	3823 in/lbs	6514 in/lbs
M3	1416 in/lbs	4389 in/lbs	7222 in/lbs
M4	990 in/lbs.	3823 in/lbs	6514 in/lbs