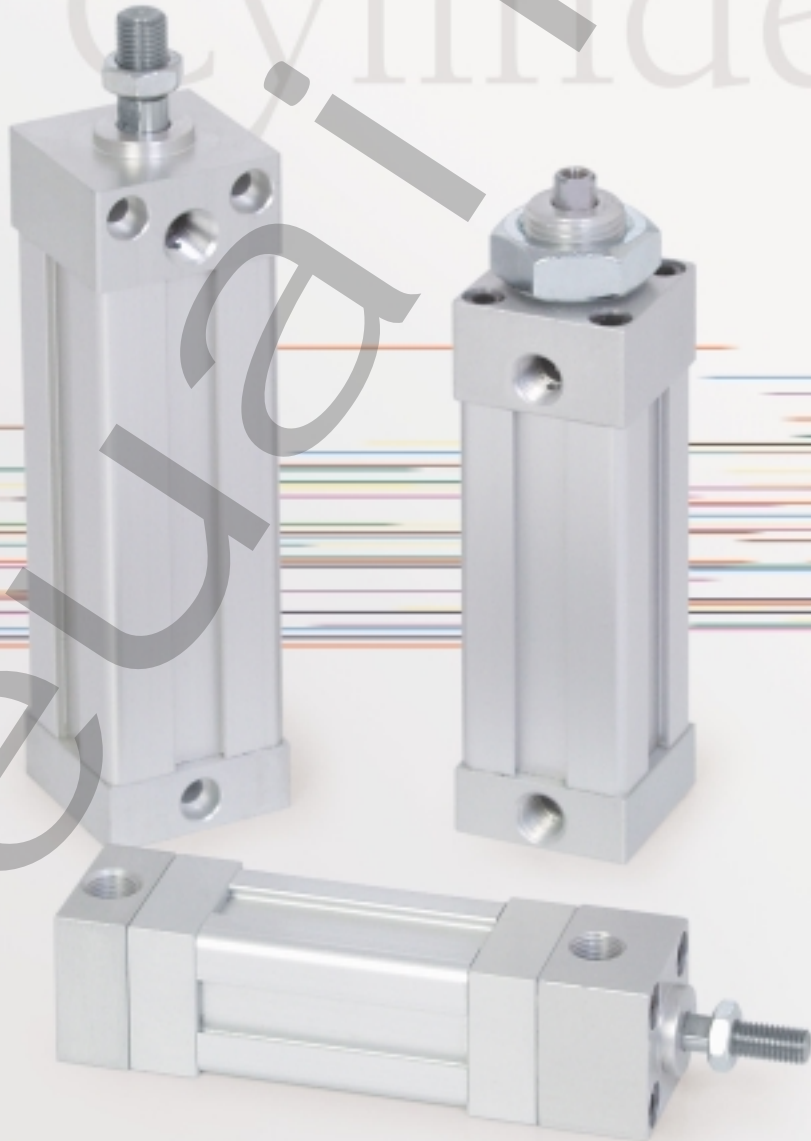


ORDER
ONLINE



Tiny Titan Series
Small Bore, Square End Cap Cylinder Line

We're everywhere you need us to be!



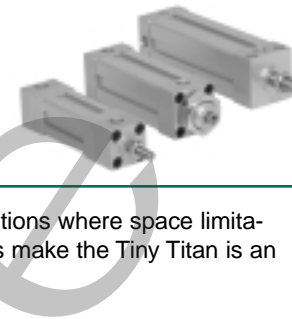
Tiny Titan Series

Features and Benefits	3-13
How to Order	3
Optional Features	4
Basic and Front Flange Mounts	5
Front and Rear Flange Mounts	6
Nose Mounts	7
Fixed Eye and Front Tap Mounts	8
Side and Bottom Mount	9
Accessories	10
Rod Ends and Accessories	11
Repair Kits-How to Order	12
	13

Pneumatic



Tiny Titan Series Small Bore, Square Cylinder



The **Tiny Titan Series** is a small bore, square end cap cylinder line that is designed to excel in applications where space limitations and are of the utmost importance. Furthermore, a multitude of mounting styles and piston options make the Tiny Titan an extremely accommodating cylinder line.

Tube

The **tube** is hard coat anodized on the inner diameter. This surface is extremely hard and possesses excellent wear and corrosion resistance, and has a low coefficient of friction. Additionally, profile tubing is standard on all bore sizes.

End Caps

The **end caps** are accurately machined from (6061-T6) solid aluminum bar stock. They are anodized for corrosion resistance. Additionally, a recess on the piston-mating surface (at both ends) enables the air to work on a larger piston area for effortless breakaway.

Rod Seal and Wiper

The unique **rod seal** and **wiper** combination is standard. The quad ring design ensures proper sealing and long life.

Tube End Seal

The **tube end seals** are compression type and reusable.

Ports

Our enhanced **port** design enables the cylinder to work more efficiently. Through the use of precise machining depths and tool shape, we are able to smooth the flow path into and out of the cylinder.

The Tiny Titan Series **piston, piston rod, rod bushing, wear band,** and **rod seal** is directly correlated to the three different types of pistons that are offered: O Type, P Type, and Q Type.

O Type Piston

The **O Type piston** (standard) is designed with a U-cup (Block-V) piston seal, a sintered bronze rod bushing, a roller burnished type 303 stainless steel piston rod, and a solid aluminum alloy piston that is strong and durable.

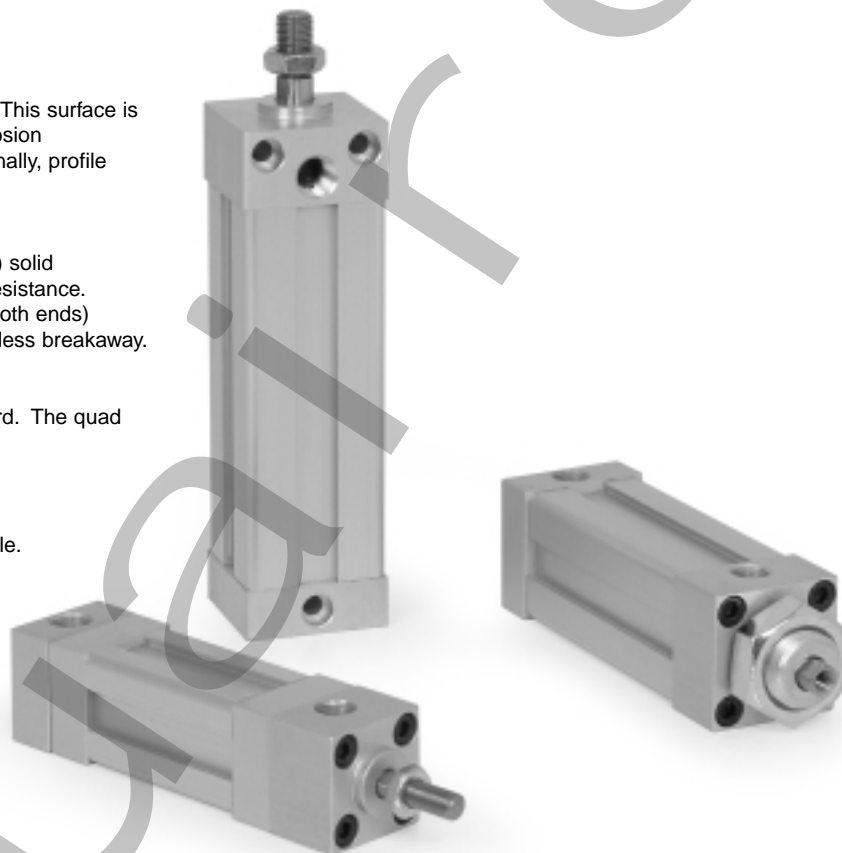
P Type Piston

The **P Type piston** is a heavy-duty design. The piston seal is carboxylated nitrile with Teflon® compound for self-lubrication. The "T" seal with back-up ring construction prevents rolling and seals at all pressures. Furthermore, this design includes a robust cast iron rod bushing, a high strength chrome plated carbon steel piston rod, a wear band, and a solid aluminum alloy piston that is strong and durable.

Q Type Piston

The **Q Type piston** is a low profile design. The piston seal is a carboxylated nitrile with Teflon® compound for self-lubricating. The "T" seal with back-up ring construction prevents rolling and seals at all pressures. It also has sintered bronze rod bushing, a roller burnished type 303 stainless steel piston rod, and a solid aluminum alloy piston that is strong and durable. A magnet cannot be added to the Q Type piston. Furthermore, a minimum of .625" of stroke is required.

Teflon® is a registered trademark of DuPont™. For detailed information regarding the properties of Teflon®, please call 1-800-441-0573.



Standard Specifications:

- Bore sizes include 3/4", 1", 1-1/8"
- Nominal pressure rating is 150 psi air
- Standard temperature -10°F to 165°F (-23°C to 74°C)
- All aluminum construction
- 1/8" ports
- Flexible port locations
- O Type piston - U-cup
- P Type piston – heavy-duty (Standard)
- Q Type piston – low profile



Tiny Titan Series Small Bore, Square Cylinder



How to Order

S8 0 C - 04 A 1 B - A AA 0

Mount

- F1 = Front Flange (Pilot)
- F2 = Rear Flange
- F7 = Front Flange
- N1 = Nose Mount
- N2 = Nose Mount (Pilot)
- P3 = Rear Eye Mount
- R1 = Sleeve Nut Mount
- S8** = Through Holes
- S9** = Bottom Tapped
- X0 = No Mount

Cylinder Type

- O = U-Cup Piston
- P = Heavy Duty Piston
- Q* = Low Profile Piston

Bore

- C = 3/4"
- E = 1"
- G = 1-1/8"

Full Inches of Stroke

- 00 = 0" Stroke
- 01 = 1" Stroke
- 02 = 2" Stroke
- 03 = 3" Stroke
- 10" = 10" Stroke

Fractional Inches of Stroke

- | | |
|-----------|------------|
| A = 0" | I = 1/2" |
| B = 1/16" | J = 9/16" |
| C = 1/8" | K = 5/8" |
| D = 3/16" | L = 11/16" |
| E = 1/4" | M = 3/4" |
| F = 5/16" | N = 13/16" |
| G = 3/8" | O = 7/8" |
| H = 7/16" | P = 15/16" |

Magnetic Piston

- 0 = No Magnet
 - 2 = Magnet
- Magnet not available on Q Type piston.

Options

- AA = No Options
- EB* = Bumper Seal, Both Ends
- KA = Stroke Adjuster (1" Max. Adjustment)
- NA = Nickel Plated
- VA = Viton Seals
- 1A** = Rod Extension
- 2A** = Thread Extension
- 4A** = Stop Tube

*Requires a minimum of 100 psi for the rod to reach the full end of stroke with the EB option. EB option is not available on Q Type piston.

Cushions (1/2" Added Per End)

Position	1	2	3	4
No Cushion	A	A	A	A
Head and Cap	B	C	D	E
Head Only	F	G	H	J
Cap Only	K	L	M	N

NOTE: P type cap cushion not available.
** Must specify length.

Ports

Position		
1 (Std.)	B	= 1/8 NPTF
2	H	= 1/8 NPTF
3	N	= 1/8 NPTF
4	T	= 1/8 NPTF

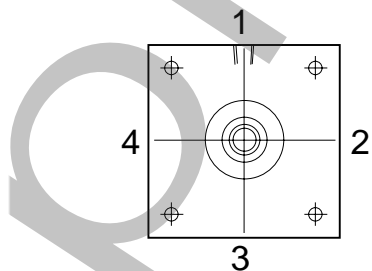
Rod End Code

- 1 = #1 Standard Rod Diameter
- 2 = #2 Standard Rod Diameter
- 3 = #3 Standard Rod Diameter
- 6 = #1 Oversize Rod Diameter
- 7 = #2 Oversize Rod Diameter
- 8 = #3 Oversize Rod Diameter

*Q Type piston requires a minimum of .625" of stroke.

**Standard ports in position # 1. Consult factory for details.

Cylinder Orientation



Ports Normally in Position 1

Cylinder Forces

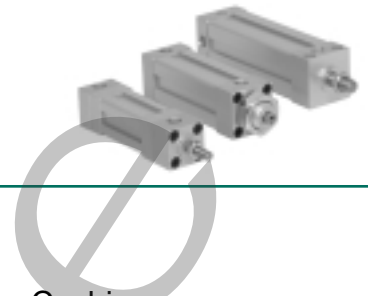
Force Chart

Pressure (PSI)

	BORE	Pressure (PSI)					
		40	60	80	100	125	150
3/4"	Extend	17	26	35	44	55	66
	Retract (Std. Rod)	15	23	31	39	49	58
	Retract (Ov. Rod)	14	21	29	36	45	54
1"	Extend	31	47	62	78	98	117
	Retract (Std. Rod)	28	42	56	70	88	106
	Retract (Ov. Rod)	27	40	54	67	84	101
1 1/8"	Extend	39	59	79	99	124	149
	Retract (Std. Rod)	35	53	70	88	110	132
	Retract (Ov. Rod)	31	47	63	79	99	119

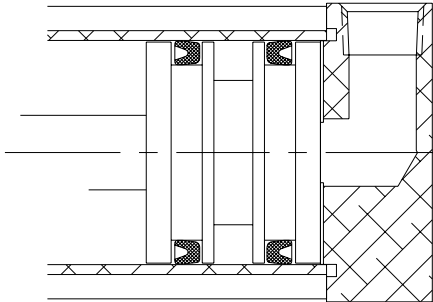


Tiny Titan Series
Small Bore, Square Cylinder



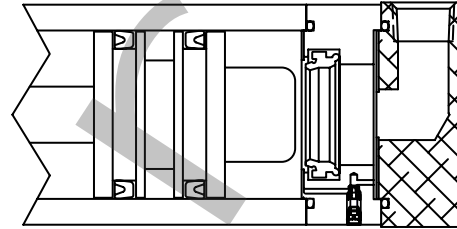
Optional Features

O Type Piston (Standard)



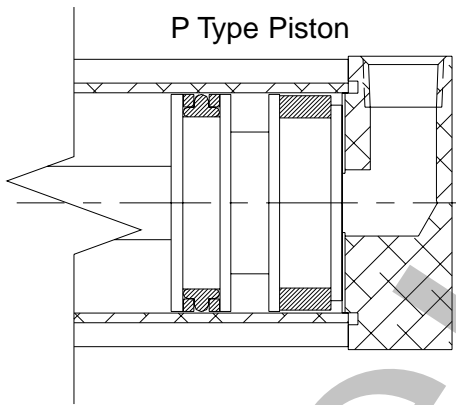
- U-cup (Block-V) piston seals
- Low breakaway
- Groove for optional magnet

O Type Cap Cushion



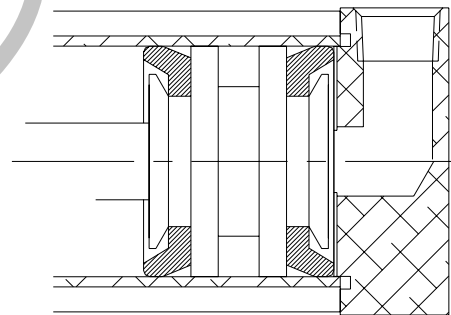
- The cushion seal has a built in check function. It seals in one direction and permits full flow in the opposite direction.
- Captured cushion needle
- Length grows by 1/2" per end

P Type Piston



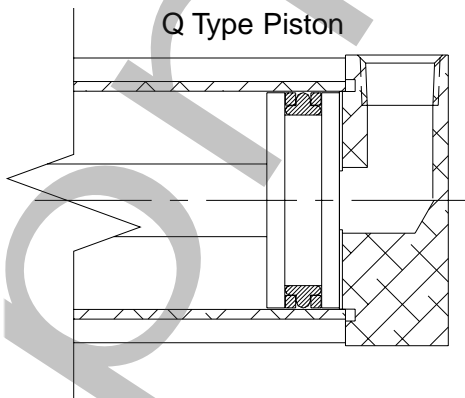
- Heavy duty
- Non-lube service
- T style piston seal
- Wear band
- Groove for optional magnet

Silencer Bumper Seal



- Reduces end of stroke impact noise
- Bumper seal does not change cylinder overall length
- Cushions not available with this option
- Requires a minimum of 100 psi for the rod to reach the full end of stroke with the EB option.

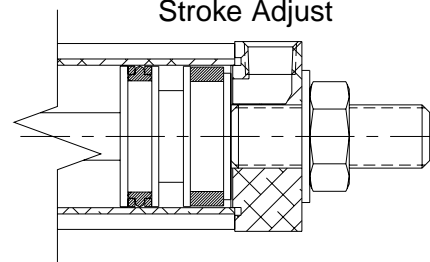
Q Type Piston



- Low profile design
- T style piston seal

*EB bumper is not an option. Magnet is not an option.
Minimum stroke of .625" required.

Stroke Adjust

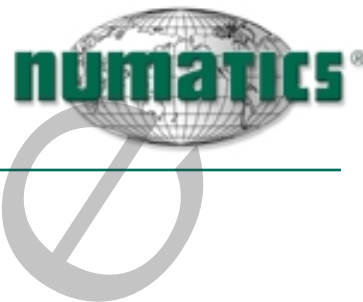


BORE	JA	JB	JC
3/4"	3/8-24	1.44	3/16
1" and 1-1/8"	1/2-20	1.44	1/4

- 1" maximum adjustment

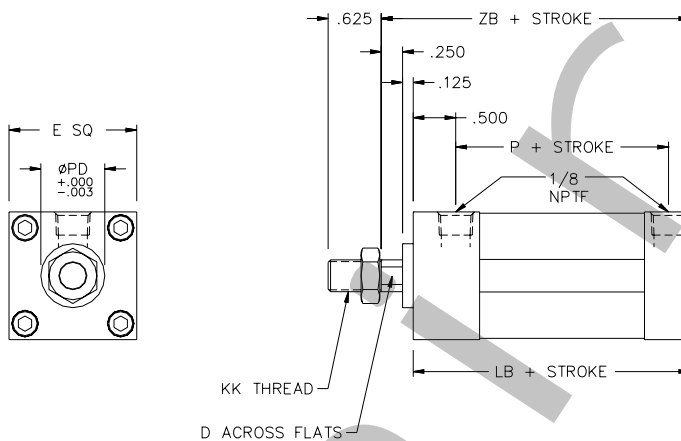


Tiny Titan Series
Small Bore, Square Cylinder

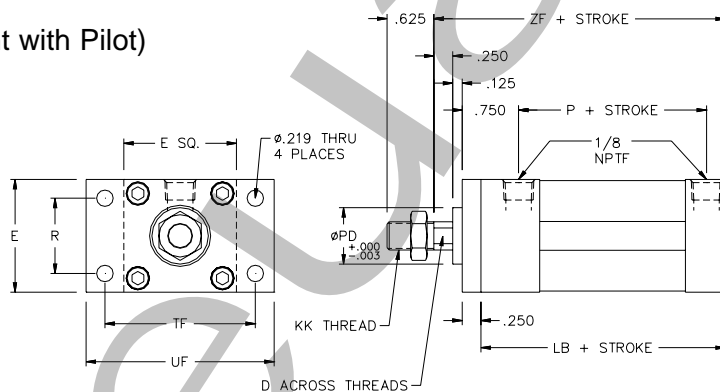


Basic and Front Flange Mounts

Mount Code X0
(Basic No Mount)



Mount Code F1
(Front Flange Mount with Pilot)



Dimensions

BORE	E	D	PD	KK**	R	TF	UF
3/4"	1.125	0.188	0.625	1/4-28	0.500	1.500	2.000
1"	1.375	0.250	0.750	5/16-24	0.875	1.875	2.375
1 1/8"	1.500	0.313	0.750	3/8-24	1.000	2.000	2.500

Stroke Related Dimensions

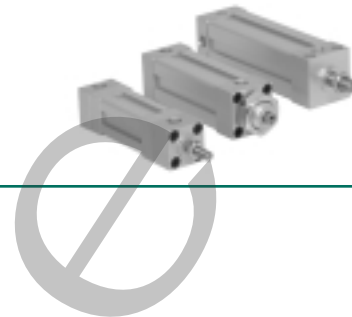
SERIES	O and P*				Q*			
BORE	LB	P	ZB	ZF	LB	P	ZB	ZF
3/4"	2.250	1.500	2.625	2.875	1.750	1.000	2.125	2.375
1"	2.250	1.500	2.625	2.875	1.750	1.000	2.125	2.375
1 1/8"	2.250	1.500	2.625	2.875	1.750	1.000	2.125	2.375

* Cushions: Adds 1/2" per end to the OAL of the cylinder.

** Rod Ends: See page 12 for rod end options

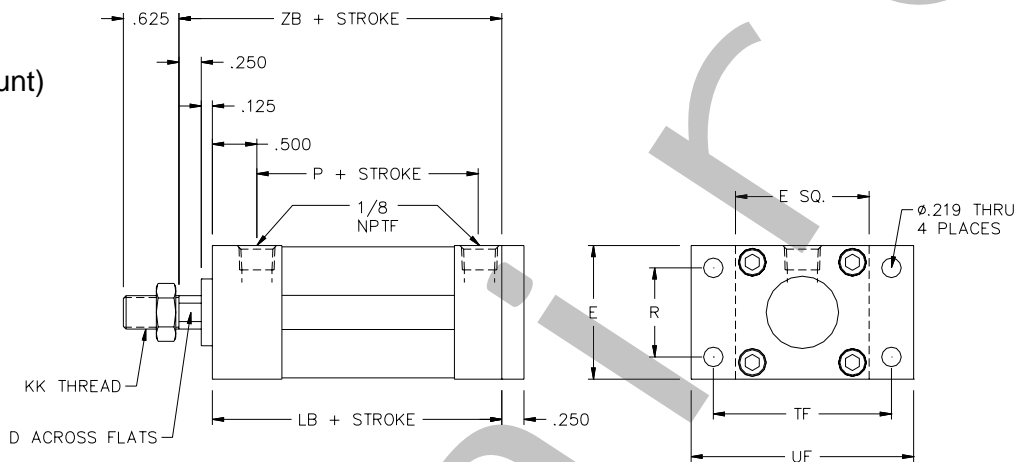


Tiny Titan Series
Small Bore, Square Cylinder

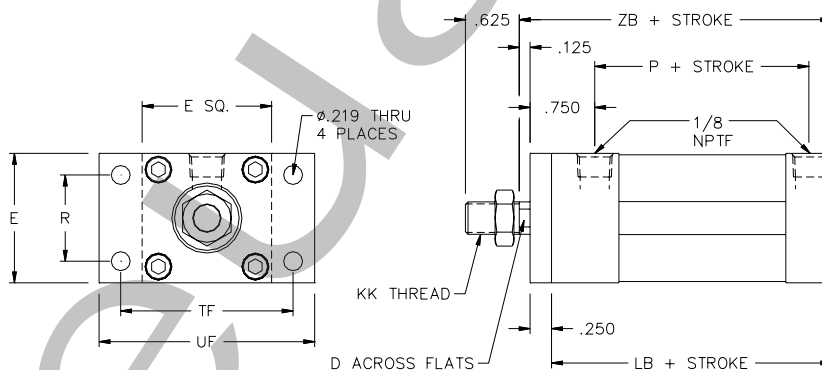


Front and Rear Flange Mounts

Mount Code F2
(Rear Flange Mount)



Mount Code F7
(Front Flange Mount)



Dimensions

BORE	E	D	KK**	R	TF	UF
3/4"	1.125	0.188	1/4-28	0.500	1.500	2.000
1"	1.375	0.250	5/16-24	0.875	1.875	2.375
1 1/8"	1.500	0.313	3/8-24	1.000	2.000	2.500

Stroke Related Dimensions

SERIES	O and P*			Q*		
BORE	LB	P	ZB	LB	P	ZB
3/4"	2.250	1.500	2.625	1.750	1.000	2.125
1"	2.250	1.500	2.625	1.750	1.000	2.125
1 1/8"	2.250	1.500	2.625	1.750	1.000	2.125

* Cushions: Adds 1/2" per end to the OAL of the cylinder.

** Rod Ends: See page 12 for rod end options

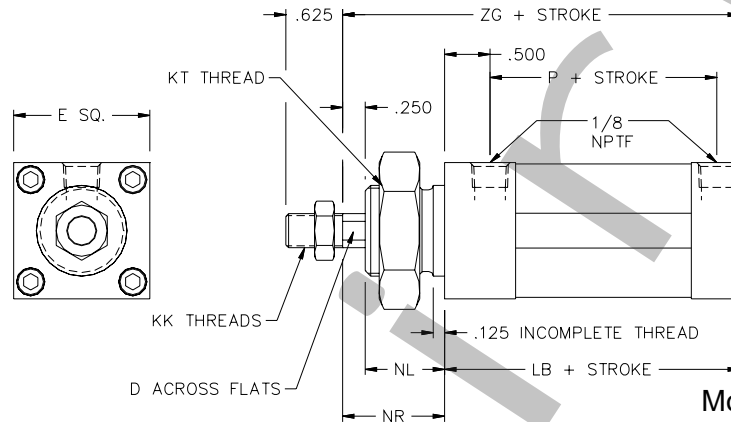


Tiny Titan Series
Small Bore, Square Cylinder



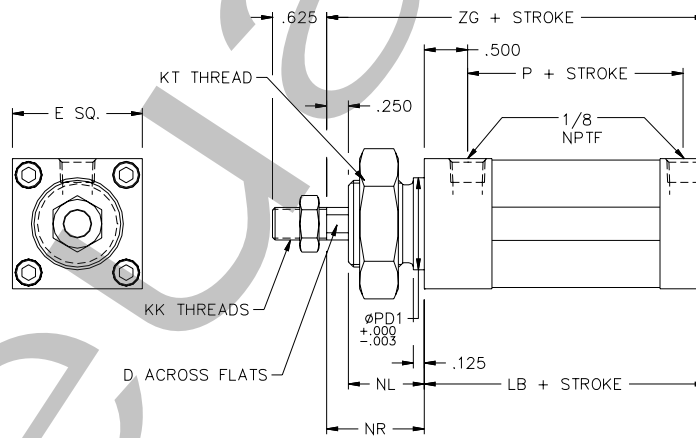
Nose Mounts

Mount Code N1
(Nose Mount)



Mounting Nuts Included

Mount Code N2
(Nose Mount with Pilot)



Mounting Nuts Included

Dimensions

BORE	E	D	PD1	KK**	KT	NL	NR
3/4"	1.125	0.188	0.687	1/4-28	5/8-18	0.625	0.875
1"	1.375	0.250	0.812	5/16-24	3/4-16	0.625	0.875
1 1/8"	1.500	0.313	1.062	3/8-24	1-14	0.875	1.125

Stroke Related Dimensions

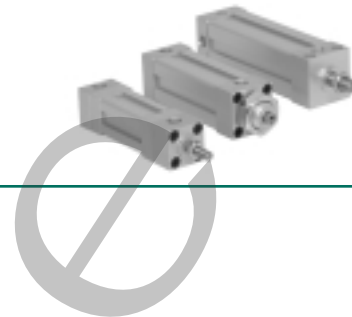
SERIES	O and P*			Q*		
BORE	LB	P	ZG	LB	P	ZG
3/4"	2.250	1.500	3.125	1.750	1.000	2.625
1"	2.250	1.500	3.125	1.750	1.000	2.625
1 1/8"	2.250	1.500	3.125	1.750	1.000	2.875

* Cushions: Adds 1/2" per end to the OAL of the cylinder.

** Rod Ends: See page 12 for rod end options

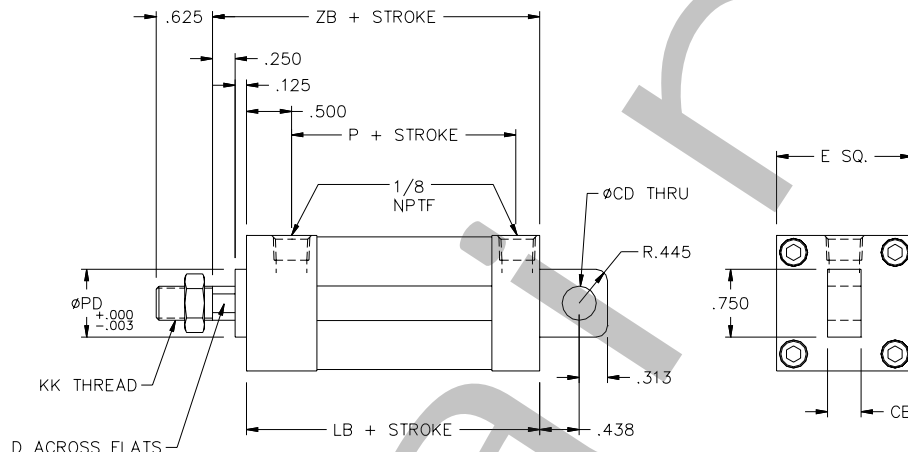


Tiny Titan Series
Small Bore, Square Cylinder

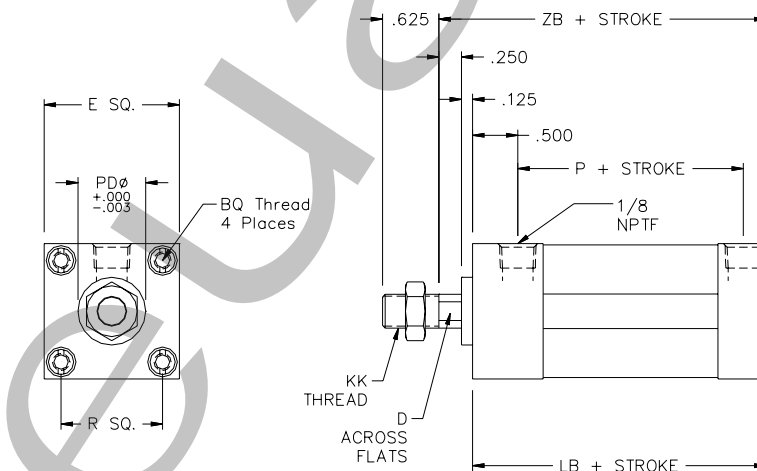


Fixed Eye and Front Tap Mounts

Mount Code P3
(Eye Mount)



Mount Code R1
(Front Tapped Mount)



Dimensions

BORE	E	BQ	CB	CD	D	KK**	PD	R
3/4"	1.125	8-32 X 1/4 DEEP	0.250	0.250	0.188	1/4-28	0.625	0.750
1"	1.375	8-32 X 1/4 DEEP	0.375	0.375	0.250	5/16-24	0.750	1.000
1 1/8"	1.500	10-32 X 1/4 DEEP	0.375	0.375	0.313	3/8-24	0.750	1.125

Stroke Related Dimensions

SERIES BORE	O and P*			Q*		
	LB	P	ZB	LB	P	ZB
3/4"	2.250	1.500	2.625	1.750	1.000	2.125
1"	2.250	1.500	2.625	1.750	1.000	2.125
1 1/8"	2.250	1.500	2.625	1.750	1.000	2.125

* Cushions: Adds 1/2" per end to the OAL of the cylinder.

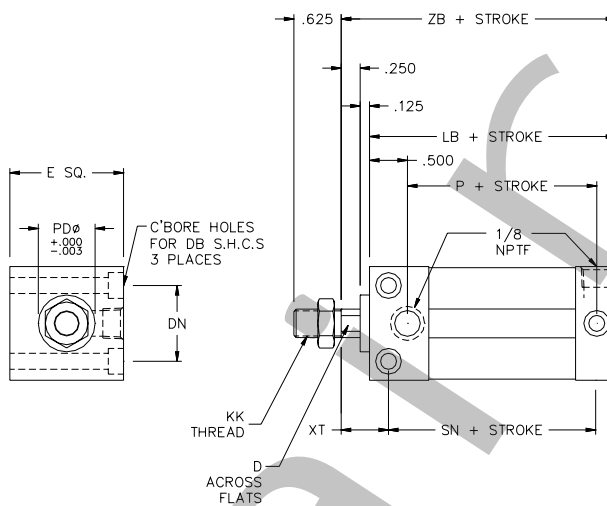
** Rod Ends: See page 12 for rod end options



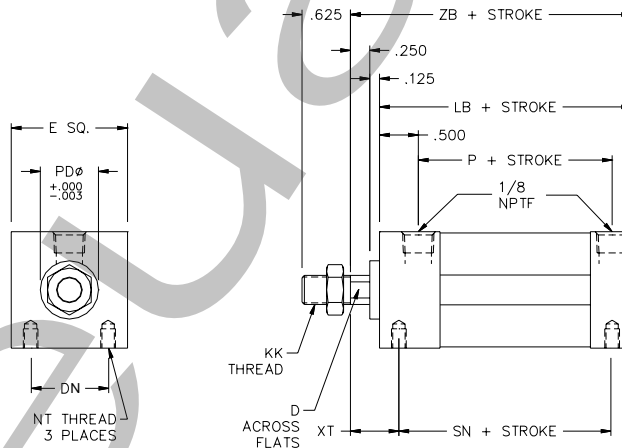
Tiny Titan Series Small Bore, Square Cylinder

Side and Bottom Mount

Mount Code S8
(Side Mount)
Standard ports in
position # 1. Consult
factory for details.



Mount Code S9
(Bottom Tapped Mount)
Standard ports in
position # 1. Consult
factory for details.



Dimensions

BORE	E	D	DB	DN	PD	KK**	NT	XT
3/4"	1.125	0.188	#8	0.625	0.625	1/4-28	8-32 X .18 DEEP	0.563
1"	1.375	0.250	#10	0.875	0.750	5/16-24	10-32 X .25 DEEP	0.625
1 1/8"	1.500	0.313	#10	1.000	0.750	3/8-24	10-32 X .25 DEEP	0.625

Stroke Related Dimensions

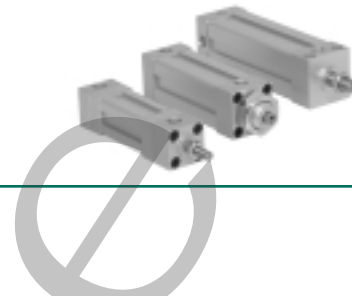
SERIES BORE	O and P*				Q*				
	LB	P	SN	ZB	LB	P	SN	ZB	
3/4"	2.250	1.500	1.812	2.625	1.750	1.000	1.312	2.125	
1"	2.250	1.500	1.750	2.625	1.750	1.000	1.250	2.125	
1 1/8"	2.250	1.500	1.750	2.625	1.750	1.000	1.250	2.125	

* Cushions: Adds 1/2" per end to the OAL of the cylinder.

** Rod Ends: See page 12 for rod end options

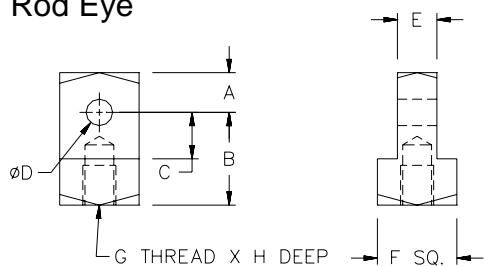


Tiny Titan Series
Small Bore, Square Cylinder



Accessories

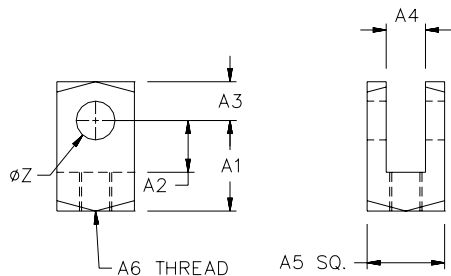
Rod Eye



PART #*	A	B	C	D	E	F	G	H
P26-C01	0.250	0.750	0.438	0.250	0.250	0.500	1/4-28	0.280
P26-E01	0.375	0.875	0.438	0.375	0.375	0.750	5/16-24	0.380
P26-E02	0.375	0.875	0.438	0.250	0.375	0.750	5/16-24	0.380
P26-G01	0.375	0.875	0.438	0.375	0.375	0.750	3/8-24	0.310
P26-G02	0.375	0.875	0.438	0.250	0.375	0.750	3/8-24	0.310

* Parts are zinc plated steel

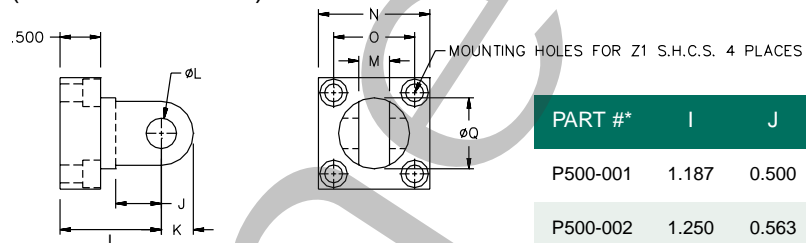
Rod Clevis
(Pivot Pin Included)



PART #*	Z	A1	A2	A3	A4	A5	A6
P500-301	0.250	0.812	0.500	0.250	0.250	0.500	1/4-28
P500-302	0.375	0.875	0.500	0.375	0.375	0.750	5/16-24
P500-303	0.250	0.875	0.500	0.375	0.375	0.750	5/16-24
P500-304	0.375	0.875	0.500	0.375	0.375	0.750	3/8-24
P500-305	0.250	0.875	0.500	0.375	0.375	0.750	3/8-24

* Parts are zinc plated steel

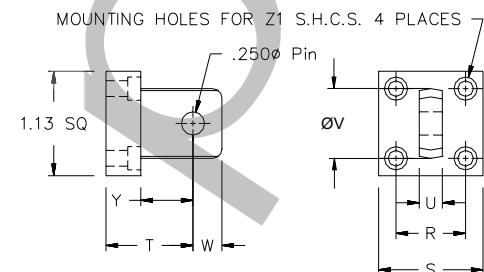
Clevis Bracket
(Pivot Pin Included)



PART #*	I	J	K	L	M	N	O	Q	Z1
P500-001	1.187	0.500	0.250	0.250	0.250	1.125	0.750	0.750	#6
P500-002	1.250	0.563	0.375	0.375	0.375	1.375	1.000	0.875	#10
P500-003	1.250	0.563	0.375	0.250	0.375	1.375	1.000	0.875	#10

* Parts are zinc plated steel

Eye Bracket



PART #*	R	S	T	U	V	W	X	Y	Z1
P30-C01	0.75	1.125	0.937	0.250	0.750	0.312	0.250	0.56	#6
P30-E01	1.000	1.375	0.937	0.375	0.750	0.312	0.375	0.56	#10
P30-E02	1.000	1.375	0.937	0.375	0.750	0.312	0.250	0.56	#10

* Parts are zinc plated steel

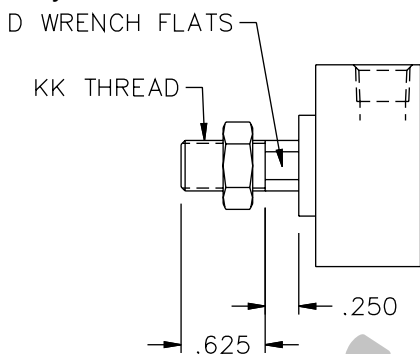


Tiny Titan Series
Small Bore, Square Cylinder

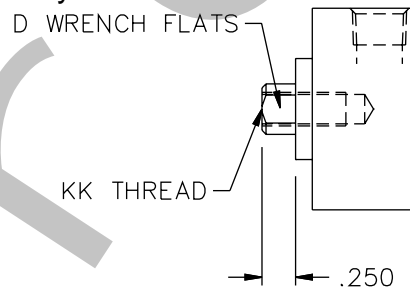
Rod Ends and
Accessories

Rod Ends

Styles 1 and 2



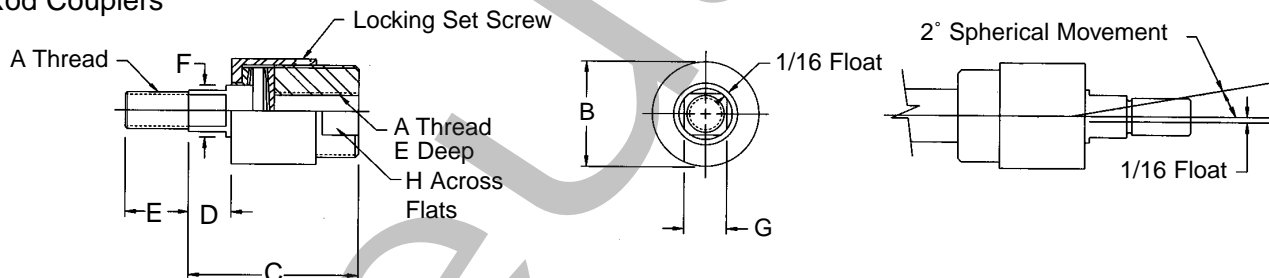
Style 3



Jam nuts included
with Style 1 and
Style 2 rod ends.

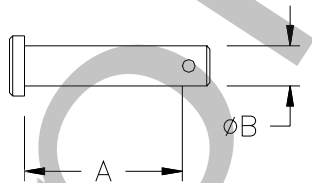
BORE	ROD	STYLE 1	STYLE 2	STYLE 3	D
3/4"	0.250	1/4-28	1/4-20	6-32 X .44 DEEP	0.188
3/4"	0.312	5/16-24	5/16-18	10-32 X .63 DEEP	0.250
1"	0.312	5/16-24	5/16-18	10-32 X .63 DEEP	0.250
1"	0.375	3/8-24	3/8-16	1/4-28 X .63 DEEP	0.312
1 1/8"	0.375	3/8-24	3/8-16	1/4-28 X .63 DEEP	0.312
1 1/8"	0.500	1/2-20	1/2-13	3/8-24 X .63 DEEP	0.438

Rod Couplers



PART #	A	B	C	D	E	F	G	H
A500-600	1/4-28	7/8	1-1/4	1/4	5/8	5/16	3/16	3/4
A500-601	5/16-24	7/8	1-1/4	1/4	5/8	5/16	1/4	3/4
A500-602	3/8-24	7/8	1-1/4	1/4	5/8	5/16	5/16	3/4
A500-604	1/2-20	1-1/4	2	1/2	3/4	5/8	1/2	1

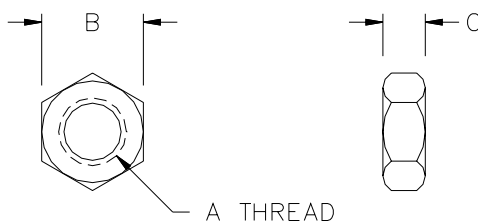
Pivot Pin



PART #*	A	B
P500-401	0.984	0.250
P500-403	0.891	0.375

* Parts are zinc plated steel

Hex Nuts

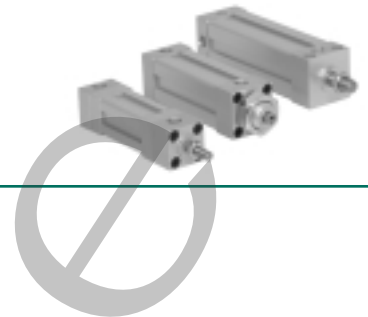


PART#*	A	B	C
N90-1093	1/4-20	0.44	0.16
M190001	1/4-28	0.44	0.16
N90-1094	5/16-18	0.50	0.19
M18-004	5/16-24	0.50	0.19
N90-1062	3/8-16	0.56	0.22
M190002	3/8-24	0.56	0.22
N90-1095	1/2-13	0.75	0.31
M190004	1/2-20	0.75	0.31
M190005	5/8-18	0.94	0.38
M190006	3/4-16	1.12	0.42
M190008	1-14	1.50	0.55

* Parts are zinc plated steel



Tiny Titan Series
Small Bore, Square Cylinder



How to Order

Repair Kits

P 98 - C 0 1 N - AA

Cylinder Type

- O = U-Cup Piston
- P = Heavy Duty Piston
- Q = Low Profile Piston

Cylinder Bore

- C = 3/4"
- E = 1"
- G = 1-1/8"

Rod Size

- 0 = Standard Rod Diameter
- 1 = Oversize Rod Diameter

Cylinder Options

- AA = No Options
- EB = Bumper Seal, Both Ends
- NA = Nickel Plated
- VA = Viton Seals

Cushions

- B = Both Ends Cushioned
- H = One End Cushioned
- N = Non-Cushioned

Cylinder Mounting

- 1 = X0, F2, F7 and P3
- 2 = S9
- 3 = R1
- 4 = S8
- 5 = N2
- 6 = N1
- 7 = F1

Pneumatic