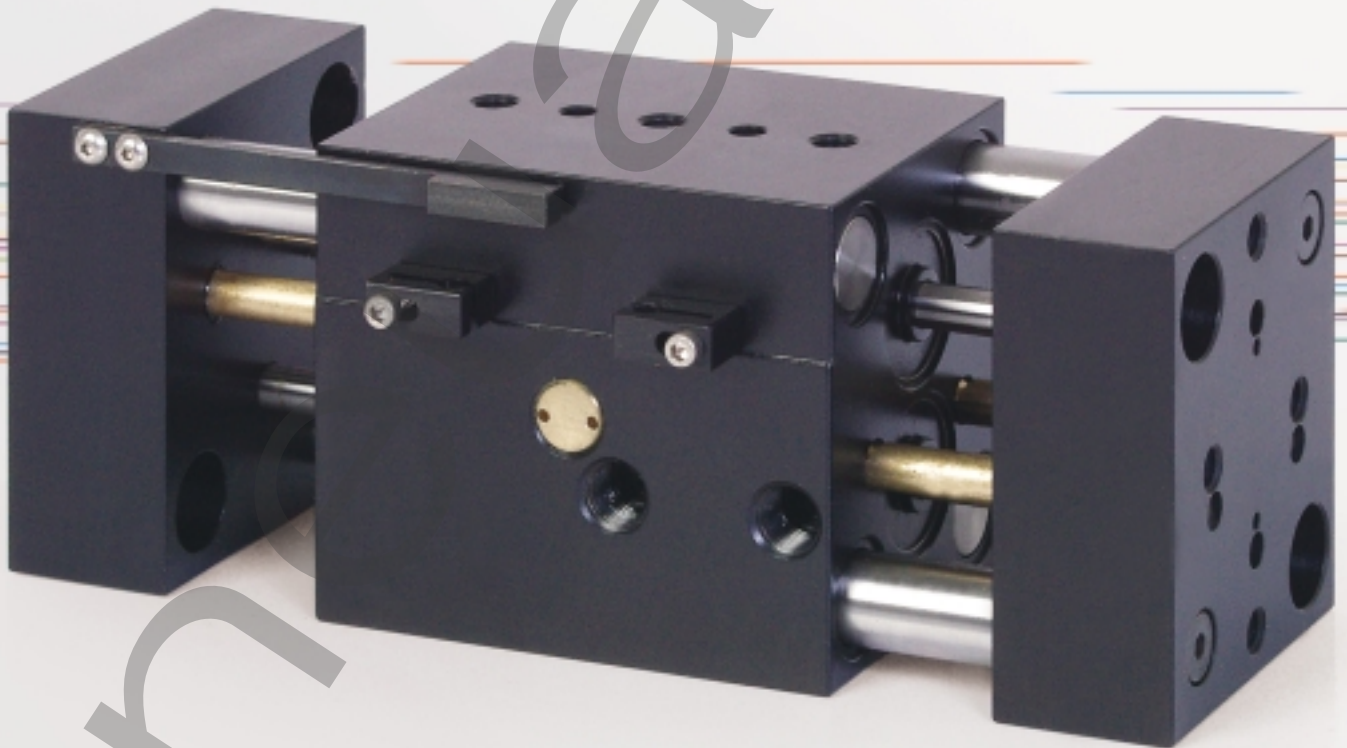


ORDER
ONLINE



Grippers



WBG Series

Wide Body Grippers

We're everywhere you need us to be!

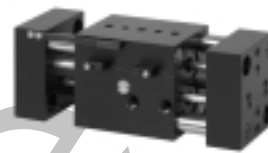


WBG Series Parallel Grippers	3-6
Features and Benefits	3
How To Order	3
WBG 60 Technical Specifications	4
WBG 90 Dimensions and Technical Specifications	5
WBG 200 Dimensions and Technical Specifications	6

Pneumair



WBG Series Parallel Grippers



Gripper Summary of Operation

WBG-Series utilizes four independent pistons to power the jaws open and closed. Jaws utilize a rack & pinion for synchronization which are independent from force rods and support rods. Non-Synchronous operation is available.

A. Body

High Strength, Anodized aluminum.

Ultra high gripping force to weight ratio.

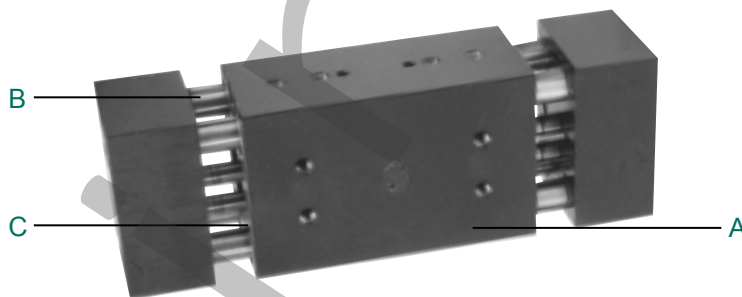
B. Support rods

Hardened steel support shafts are guided through the full width of the body. Wiper seals assist in keeping rods free of debris.

C. Seals

Piston seals are quad ring type for long service life.

- Units are permanently lubricated for non-lube air operation, allowing for OSHA regulations.
- Proximity switches are available to monitor open and closed position of the jaws.



How to Order

WBG S 60 S 1 W C X

Gripper Stroke

- S = Short
- L = Long
- X* = Extra Long
- *Only available in WBG 90 Series.

Gripper Model Number

- 60
- 90
- 200

Gripper Motion

- S = Synchronous
- C = Compliant

Seal Type

- 1 = Buna-N
- 2 = Viton

Options

- X = No Options

Sensing Position

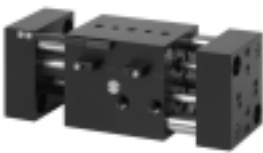
- A = Single Position Open
- B = Single Position Close
- C = Two Position Sensing
- D = No Sensing

Sensing Type

- Standard Cord Set
 - 4 = Prox Switch - PNP (sourcing)
 - 5 = Prox Switch - NPN (sinking)
 - 6 = No Sensing
 - Quick Disconnect Cord Set
 - W = Prox Switch - PNP (sourcing) Straight
 - V = Prox Switch - NPN (sinking) Straight
 - U = Prox Switch - PNP (sourcing) 90 Deg.
 - T = Prox Switch - NPN (sinking) 90 Deg.
- Prox switches are 4 mm diameter.

When ordering additional switches

SWITCH DESCRIPTION	STANDARD PART NO.	QUICK DISCONNECT PART NO.
Prox Switch - PNP (Sourcing)	PX04PS	PX04PQ
Prox Switch - NPN (Sinking)	PX04NS	PX04NQ
Quick disconnect cable straight	-	PXCST
Quick disconnect cable 90 deg.	-	PXC90



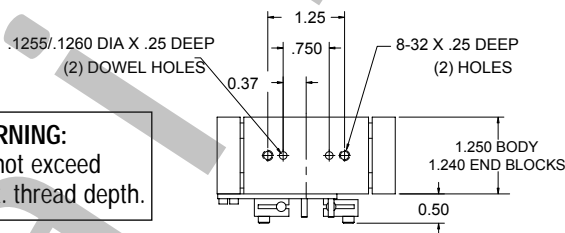
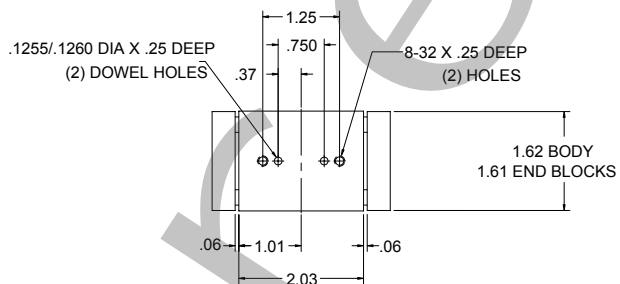
WBG Series
Parallel Grippers



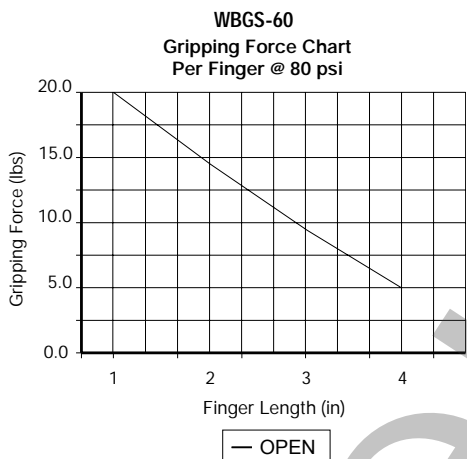
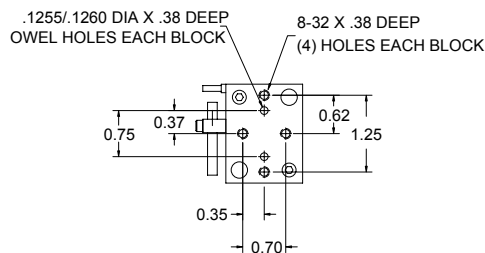
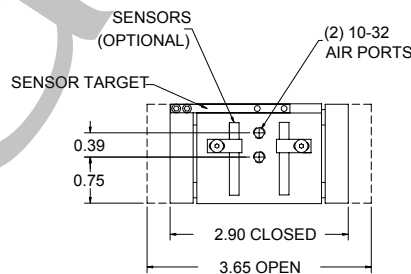
WBG 60 Series

Specifications

	WBG60
Grip Force @ 100 psi	60 lbs
Stroke	0.75 inch
Repeatability	+/- .001
Operating Temp.	
Buna-N	-30° to 180°F
Viton	-20° to 350°F
Max. Actuation Speed	0.3 sec
Displacement	0.29 cu in
Maximum Pressure	150 psi
Unit Weight	11oz



WARNING:
Do not exceed
max. thread depth.

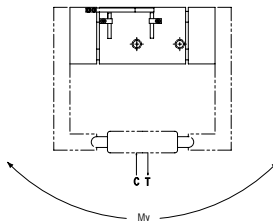
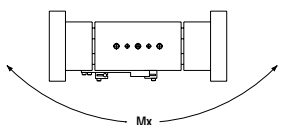


Static Condition

LOAD CAPACITY	WBG60
C-compression	50 lbs.
T-tension	50 lbs.
Mx	100 in.-lbs.
My	125 in.-lbs.
Mz	100 in.-lbs.

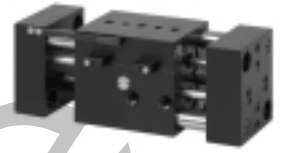
Dynamic Condition

LOAD CAPACITY	WBG60
C-compression	10 lbs.
T-tension	10 lbs.
Mx	20 in.-lbs.
My	30 in.-lbs.
Mz	20 in.-lbs.





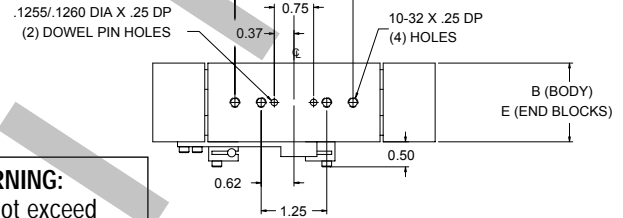
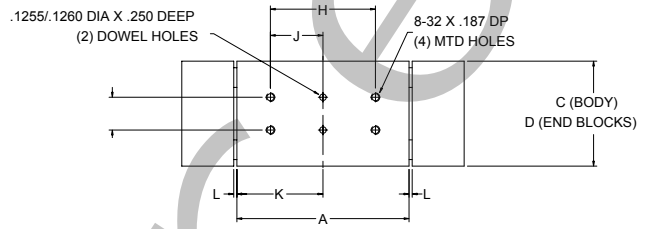
WBG Series Parallel Grippers



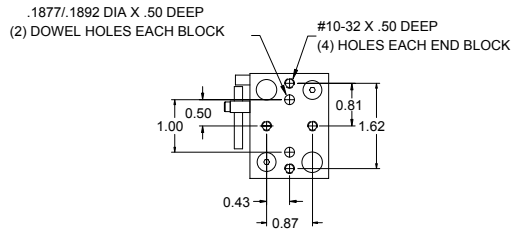
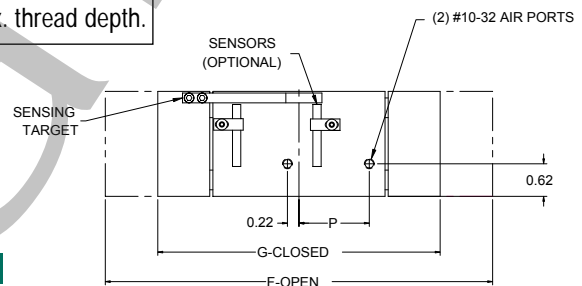
WBG 90 Series

WBG 90 Series Dimensions

	WBG90	WBG90L	WBG90X
A	2.200	3.280	5.280
B	1.500	1.500	1.500
C	2.000	2.000	2.000
D	1.990	1.990	1.990
E	1.490	1.490	1.490
F	4.740	7.380	11.380
G	3.740	5.380	7.380
H	0.750	2.000	2.000
J	0.375	1.000	1.000
K	1.100	1.640	2.640
L	0.030	0.060	0.060
M	N/A	2.25	2.50
N	N/A	1.12	1.25
P	0.840	1.340	2.150
Q	0.750/0.7500 Dowels	0.625/0.6250 Dowels	0.750/0.7500 Dowels



WARNING:
Do not exceed max. thread depth.

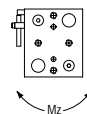
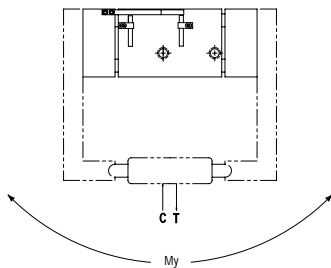
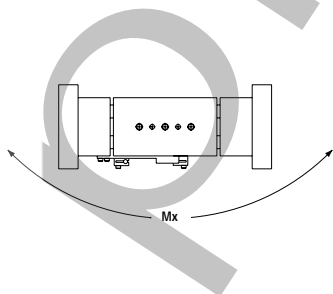


Specifications

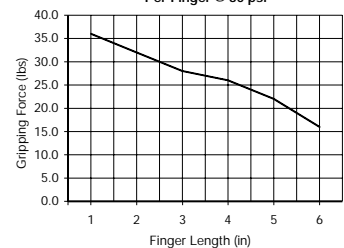
	WBG90	WBG90L	WBG90X
Grip Force @ 100 psi	90 lbs	90 lbs	90 lbs
Stroke	1.000	2.000	4.000
Repeatability	+/- 0.001	+/- 0.001	+/- 0.001
Operating Temp.			
Buna-N	-30° to 180°F	-30° to 180°F	-30° to 180°F
Viton	-20° to 350°F	-20° to 350°F	-20° to 350°F
Max. Actuation Speed	0.3 sec	0.3 sec	0.3 sec
Displacement	0.61 cu in	1.23 cu in	2.46 cu in
Maximum Pressure	150 psi	150 psi	150 psi
Unit Weight	1.3 lbs	2 lbs	3.2 lbs

Load Capacity

	STATIC CONDITION			DYNAMIC CONDITION		
	WBG90	WBG90L	WBG90X	WBG90	WBG90L	WBG90X
C-Compression	100 lbs	100 lbs	100 lbs	20 lbs	20 lbs	20 lbs
T-Tension	100 lbs	100 lbs	100 lbs	20 lbs	20 lbs	20 lbs
Mx	175 in.-lbs.	175 in.-lbs.	175 in.-lbs.	35 in.-lbs.	35 in.-lbs.	35 in.-lbs.
My	250 in.-lbs.	250 in.-lbs.	250 in.-lbs.	50 in.-lbs.	50 in.-lbs.	50 in.-lbs.
Mz	175 in.-lbs.	175 in.-lbs.	175 in.-lbs.	35 in.-lbs.	35 in.-lbs.	35 in.-lbs.



WBG-90
Gripping Force Chart
Per Finger @ 80 psi



— OPEN

WBG Series Parallel Grippers

WBG 200 Series

WBG 200 Dimensions

	WBG200	WBGL200
A	3.000	4.000
B	2.250	2.250
C	2.630	2.630
D	2.620	2.620
E	2.240	2.240
F	6.730	9.230
G	5.230	6.730
H	2.000	2.000
J	1.000	1.000
K	1.500	2.000
L	1.240	1.730

Specifications

	WBG200	WBGL200
Grip Force @ 100 psi	150 lbs	150 lbs
Stroke	1.500	2.500
Repeatability	+/- 0.001	+/- 0.001
Operating Temp.		
Buna-N	-30° to 180°F	-30° to 180°F
Viton	-20° to 350°F	-20° to 350°F
Max. Actuation Speed	0.3 sec	0.3 sec
Displacement	1.80 cu in	3.00 cu in
Maximum Pressure	150 psi	150 psi
Unit Weight	3 lbs.	4 lbs.

Static Condition

LOAD CAPACITY	WBG200	WBGL200
C-compression	500 lbs.	500 lbs.
T-tension	500 lbs.	500 lbs.
Mx	500 in.-lbs.	500 in.-lbs.
My	750 in.-lbs.	750 in.-lbs.
Mz	500 in.-lbs.	500 in.-lbs.

Dynamic Condition

LOAD CAPACITY	WBG200	WBGL200
C-compression	50 lbs.	50 lbs.
T-tension	50 lbs.	50 lbs.
Mx	50 in.-lbs.	50 in.-lbs.
My	75 in.-lbs.	75 in.-lbs.
Mz	50 in.-lbs.	50 in.-lbs.

