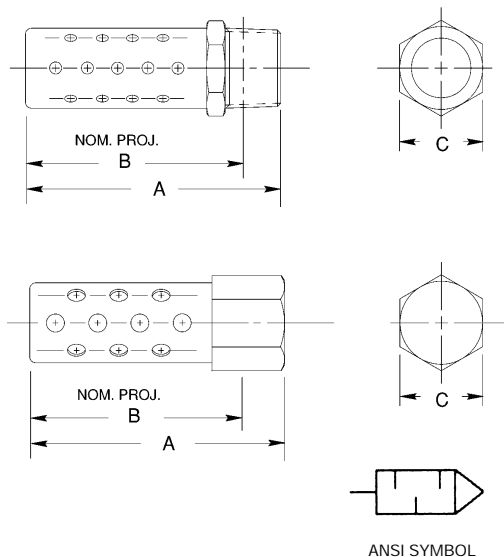




Accessories



M Series Metal Air Silencers



NPTF Male Dimensions

MODEL	NPTF	A	B	C	cv
M1MN	1/8	1.38 (34.9)	1.22 (31.0)	0.44 (11.1)	1.17
M2MN	1/4	1.75 (44.5)	1.53 (38.9)	0.56 (14.3)	2.54
M3MN	3/8	2.25 (57.2)	2.00 (50.8)	0.69 (17.5)	5.08
M4MN	1/2	2.72 (69.1)	2.41 (61.1)	0.88 (22.2)	7.32
M5MN	3/4	3.16 (80.2)	2.81 (71.4)	1.06 (27.0)	13.87
M6MN	1	3.88 (98.4)	3.47 (88.1)	1.31 (33.3)	19.53
M7MN	1 1/4	4.50 (114.3)	4.16 (105.6)	1.69 (42.9)	28.32
M8MN	1 1/2	5.00 (127.0)	4.59 (116.7)	2.00 (50.8)	38.09
M9MN	2	5.50 (139.7)	5.06 (128.6)	2.38 (60.3)	52.73

NPTF Female Dimensions

MODEL	NPTF	A	B	C	cv
M1FN	1/8	1.38 (34.9)	1.22 (31.0)	0.50 (12.7)	1.17
M2FN	1/4	1.75 (44.5)	1.53 (38.9)	0.62 (15.9)	2.54
M3FN	3/8	2.25 (57.2)	2.00 (50.8)	0.75 (19.1)	5.08
M4FN	1/2	2.72 (69.1)	2.41 (61.1)	0.94 (23.8)	7.32

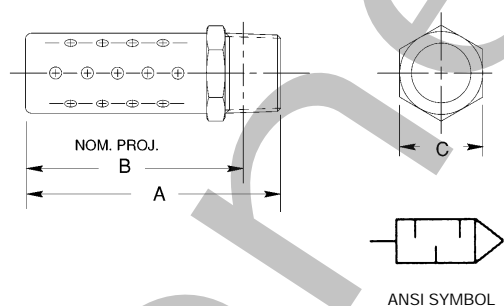
BSPT Male Dimensions

MODEL	BSPT	A	B	C	cv
M1MB	1/8	1.38 (34.9)	1.22 (31)	0.44 (11.1)	1.17
M2MB	1/4	1.75 (44.5)	1.53 (38.9)	0.56 (14.3)	2.54
M3MB	3/8	2.25 (57.2)	2.00 (50.8)	0.69 (17.5)	5.08
M4MB	1/2	2.72 (69.1)	2.41 (61.1)	0.88 (22.2)	7.32
M5MB	3/4	3.16 (80.2)	2.81 (71.4)	1.06 (27.0)	13.87
M6MB	1	3.88 (98.4)	3.47 (88.1)	1.31 (33.3)	19.53

Application:

The M Series muffler softly exhausts air and disperses it over a 360° pattern. Constructed of a corrosion resistant metal, it can withstand shock and continuous, heavy duty use under many conditions. This muffler is ideal for use on the 22/32 Series Solenoid Soft Start Quick Exhaust Valve, Lockout Valves, valve exhaust ports, single acting cylinders, and many other applications.

SSM Series Stainless Steel Air Silencers



NPTF Male Dimensions

MODEL	NPTF	A	B	C	cv
SSM1MN	1/8	1.38 (34.9)	1.22 (31.0)	0.44 (11.1)	1.17
SSM2MN	1/4	1.75 (44.5)	1.53 (38.9)	0.56 (14.3)	2.54
SSM3MN	3/8	2.25 (57.2)	2.00 (50.8)	0.69 (17.5)	5.08
SSM4MN	1/2	2.72 (69.1)	2.41 (61.1)	0.88 (22.2)	7.32
SSM5MN	3/4	3.16 (80.2)	2.81 (71.4)	1.06 (27.0)	13.87
SSM6MN	1	3.88 (98.4)	3.47 (88.1)	1.31 (33.3)	19.53

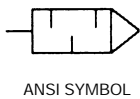
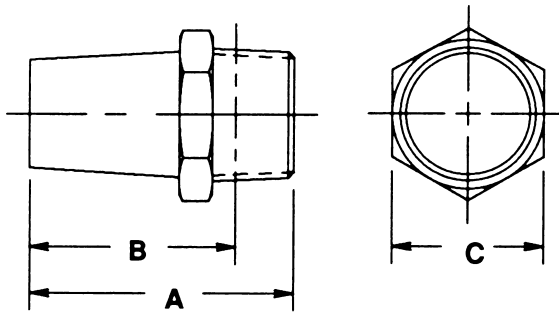
Application:

The SSM Series Muffler is constructed with 300 Series stainless steel. Resistant to atmospheric corrosion, sterilizing solutions, organic chemicals, and many inorganic chemicals makes this a terrific product for dairy and food plants. The SSM Series Muffler softly exhausts air and disperses it over a 360° pattern. Because of its heavy-duty construction, it can withstand shock and continuous cycling.



Accessories

P Series Porous Bronze Air Silencers



NPTF Male Dimensions

MODEL	NPTF	A	B	C	CV
P0MN	10-32	0.75 (19.1)	0.62 (15.7)	0.38 (9.5)	0.23
P1MN	1/8	0.84 (21.4)	0.69 (17.5)	0.44 (11.1)	1.07
P2MN	1/4	1.20 (30.6)	0.97(24.6)	0.56 (14.3)	1.78
P3MN	3/8	1.45 (36.7)	1.20 (30.6)	0.69 (17.5)	2.30
P4MN	1/2	1.89 (48.0)	1.58 (40.1)	0.88 (22.2)	5.66
P5MN	3/4	2.12 (54.0)	1.78 (45.2)	1.06 (27.0)	9.67
P6MN	1	2.84 (72.2)	2.44 (61.9)	1.31 (33.3)	14.06
P7MN	1 1/4	3.44 (87.3)	3.00 (76.2)	1.69 (42.9)	20.51
P8MN	1 1/2	4.00 (101.6)	3.56 (90.5)	2.00 (50.8)	29.10
P9MN	2	4.75 (120.7)	4.31 (109.5)	2.38 (60.3)	44.92

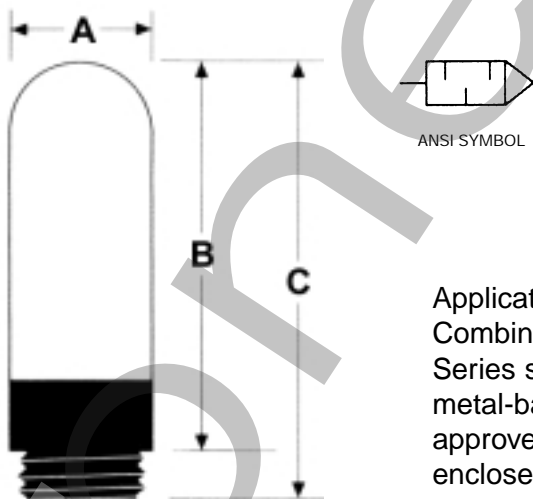
BSPT Male Dimensions

MODEL	BSPT	A	B	C	CV
P1MB	1/8	0.84 (21.3)	0.69 (17.5)	0.44 (11.1)	1.07
P2MB	1/4	1.20 (30.5)	0.97 (24.6)	0.56 (14.3)	1.78
P3MB	3/8	1.45(36.8)	1.20 (30.5)	0.69 (17.5)	2.30
P4MB	1/2	1.89 (48.0)	1.58 (40.1)	0.88 (22.2)	5.66
P5MB	3/4	2.12 (53.9)	1.78 (45.2)	1.06 (27.0)	9.67
P6MB	1	2.84 (72.1)	2.44 (62.0)	1.31 (33.3)	14.06

Application:

The P Series muffler is perfect for limited space applications due to its compact size. This silencer can be used to muffle air valve exhaust noise, intake filtration, coalescing of oil mist exhaust, pressure or vacuum equalization, or on any other liquid vapor.

E Series Polyethylene Air Silencers



NPTF Male Dimensions

MODEL	NPTF	A	B	C
E1MN	1/8	0.49 (12.5)	1.1 (28.3)	1.3 (34.0)
E2MN	1/4	0.61 (15.5)	1.4 (35.5)	1.7 (42.5)
E3MN	3/8	0.73 (18.5)	2.2 (56.0)	2.7 (67.5)
E4MN	1/2	0.93 (23.5)	2.6 (67.0)	3.1 (78.0)
E5MN	3/4	1.50 (38.5)	4.9 (123.5)	5.5 (140.0)
E6MN	1	1.90 (49.0)	5.5 (140.5)	6.3 (160.0)

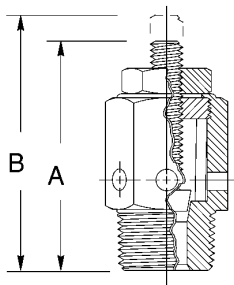
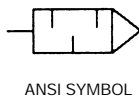
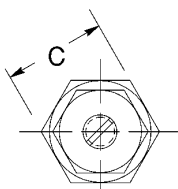
Application:

Combining a sturdy nylon thread with a polyethylene body, the E Series silencer gives a low-cost, light weight alternative to heavier, metal-based mufflers while reducing decibel levels to an OSHA approved level. It is perfect for robotic arm applications, low-traffic or enclosed areas, or where cost is of primary concern.



Accessories

Bronze Speed Control Muffler



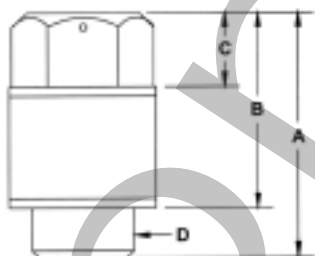
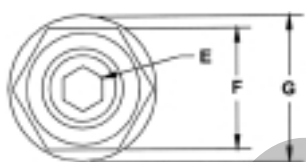
Model Selection

PORT SIZE	MODELS NPT	Cv	DIMENSIONS		
			A	B	C
1/8	A1MN	0.35	1.12 (28.0)	1.31 (33.0)	0.50 (13.0)
1/4	A2MN	0.67	1.42 (36.0)	1.56 (40.0)	0.63 (16.0)
3/8	A3MN	0.90	1.47 (32)	1.63 (41.0)	0.69 (18.0)
1/2	A4MN	1.35	1.75 (44)	2.00 (51.0)	0.88 (22.0)
3/4	A5MN	1.67	2.00 (51)	2.38 (60.0)	1.06 (27.0)
1	A6MN	2.32	2.25 (57)	2.50(63.0)	1.31 (33.0)

Application:

The Numatics Bronze Speed Control Muffler provides infinite metering of air flow. The sintered bronze is encased by an outer metal shroud. With linear adjusting capability, the speed of the cylinder can be decreased by adjusting the integrated screw. When optimal exhaust rate is reached, the lockout may be adjusted to prevent accidental adjustments due to vibration or other means. Maximum Operating Pressure: 300 PSI Temperature Range: 35°-300°F (1.7°-149°C)

Polyethylene Speed Control Muffler

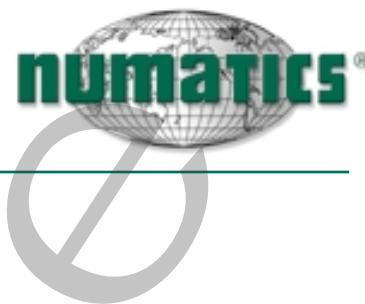


Model Selection

PORT SIZE	MODELS NPT	DIMENSIONS						
		A	B	C	D	E	F	G
M5	S0MN	0.52 (16.0)	0.36(11.0)	0.36(11.0)	M5	0.05(1.5)	3.1(79.0)	0.30(9.2.0)
1/8	S1MN	0.69(21.0)	0.49(15.0)	0.16(5.0)	1/8 NPT	0.08(2.5)	5.1(130.0)	0.49(15.0)
1/4	S2MN	0.95(29.0)	0.72(22.0)	0.23(7.0)	1/4 NPT	0.13(4.0)	5.9(150.0)	0.59(18.0)
3/8	S3MN	1.2(38.0)	0.98(30.0)	0.36(11.0)	3/8 NPT	0.20(6.0)	7.9(200.0)	0.79(24.0)
1/2	S4MN	1.6(50.0)	1.3(40.0)	0.49(15.0)	1/2 NPT	0.26(8.0)	8.4(213.0)	0.98(30.0)

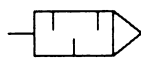
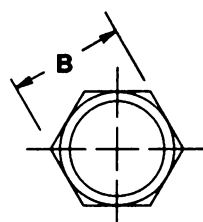
Application:

The Polyethylene Speed Control Muffler is designed to give fine adjustment to the low end of the flow range, followed by more coarse control as flow is increased toward the maximum. The body is made of highly versatile and cost-effective nylon. The adjusting screw is made of high tensile steel and is coated with electroplated zinc. The S Series muffler reduces decibel levels to an OSHA approved level.

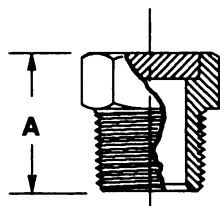


## Accessories

## Breather Vent Silencer



ANSI SYMBOL



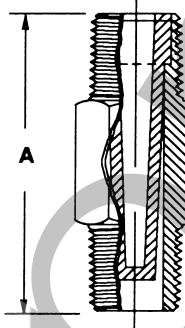
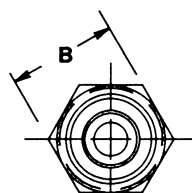
## Model Selection

PORT SIZE	MODELS		Cv	DIMENSIONS	
	NPT	BSPT		A	B
1/8	B1MN	B1MB	0.44	0.44 (11.0)	0.44 (11.0)
1/4	B2MN	B2MB	0.65	0.63 (16.0)	0.56 (14.0)
3/8	B3MN	B3MB	1.12	0.75 (19.0)	0.68 (17.0)
1/2	B4MN	B4MB	1.77	0.88 (22.0)	0.88 (22.0)
3/4	B5MN	B5MB	4.72	1.00 (25.0)	1.06 (27.0)
1	B6MN	B6MB	7.30	1.31 (33.0)	1.31 (33.0)
1 1/4	B7MN	B7MB	10.63	1.41 (50.0)	1.68 (43.0)
1 1/2	B8MN	B8MB	12.72	1.50 (38.0)	2.00 (51.0)

## Application:

The Breather Vent offers some noise reduction, but is better suited for keeping contaminant out of valve exhaust ports, single-acting cylinder ports, or any other threaded port open to atmosphere which needs flow relief. It is also used on gear boxes, storage tanks, or wherever pressure equalization is needed. The Breather Vent is compact and inexpensive. Maximum Operating Pressure: 150 PSI Operating Temperature: 35°-300°F (1.7°-149°C)

## Inlet Filter Strainer



## Model Selection

PORT SIZE	MODELS		Cv	DIMENSIONS	
	NPTF			A	B
1/8	C1MN		0.31	1.25 (32.0)	0.43 (11.0)
1/4	C2MN		0.78	1.50 (38.0)	0.56 (14.0)
3/8	C3MN		1.0	1.75 (44.0)	0.69 (17.0)
1/2	C4MN		2.0	2.00 (51.0)	0.88 (22.0)

## Application:

Ideal for air, oil, or water, the C Series Inlet Filter Strainer is compact and light weight - perfect for point of use application. It features a brass fitting which contains a cone-shaped, sintered bronze, 40 micron filter. It is used as a prefilter which eliminates bulk contamination from air lines, extending the life of filter elements and other downstream components.