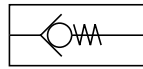
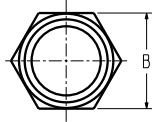




CV Series Check Valves



ANSI SYMBOL

Model Selection

PORT SIZE	MODELS NPTF	DIMENSIONS	
		A	B
1/8	CV1FN	1.75	9/16" Hex
1/4	CV2FN	2.00	11/16" Hex
3/8	CV3FN	2.00	7/8" Hex
1/2	CV4FN	2.50	1" Hex

Application:

Numatics CV Series Check Valves are used in fluid systems to permit free flow of air in on direction and prevent the flow in the opposite direction. Each check valve is clearly marked with a direction arrow to prevent accidental misconnection.

Specifications

Operating Temperature: 0° to 140° F
(5° to 60°C)

Operating Pressure: 3.5 to 213 PSIG
(0.24 to 14.69 bar)

Materials of Construction

Body: Nickel Plated Brass

Valve: Brass