



numatics

FRL Products and Accessories

Lockout Valve Series

30/40 Series Manual Lockout Valves **96**

30/40 Series Slo-Start™ Valves **97**

52 Series High Flow Lockout Valves **98**

30 Series Modular Lockout Valves **99**

Modular Air Systems **100**



MANUAL LOCKOUT VALVES

VL30/VL40 Series



VL30N03Y pictured

Application

The VL Series lockout valves is a 2-position, 3-way valve that exhausts downstream air when shifted to the closed position. Colored bright yellow with a red knob, it is easily distinguished from other air preparation products. It can be locked in the closed position with a padlock. This helps prevent unauthorized pressurization of an air system during service of maintenance operations. Units should be installed downstream of filtration equipment to avoid damage from backflow.

Features

- High exhaust capability
- Detented spool
- Low-friction startup
- Meets OSHA specifications
- Surface mountable

Specifications

Temperature Range: 40°F to 120° F (4.4° C to 46.9° C)

Maximum Pressure: 150 PSIG (10 bar)

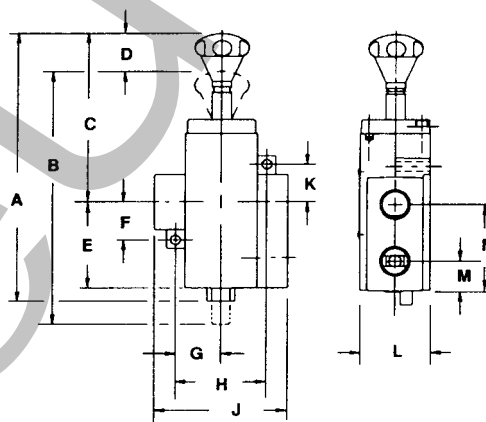
Flow Media: filtered air

Weight: VL30 Series 2.1 lbs (.95 kg)
VL40 Series 4.4 lbs (2 kg)

Cv Ratings

model number	Cv in-out	Cv out-exh	model number	Cv in-out	Cv out-exh
VL30N03Y	4.8	3.7	VL40N06Y	13.5	11.0
VL30N04Y	6.8	5.2	VL40N08Y	18.2	14.9
VL30N06Y	8.5	7.5	VL40N10Y	19.1	14.9
			VL40N12Y	20.3	16.3

Mounting Dimensions



VL30

VL40

A	8.04 (204.2)	9.75 (247.7)
B	7.54 (191.5)	9.27 (235.5)
C	5.16 (131)	6.12 (155.4)
D	.96 (24.4)	1.30 (33)
E	2.38 (60.5)	3.13 (79.5)
F	1.12 (28.6)	1.50 (38.1)
G	1.31 (33.3)	1.62 (41.3)
H	2.62 (66.6)	3.25 (82.6)
J	3.76 (95.5)	4.76 (120.9)
K	1.12 (28.6)	1.50 (38.1)
L	2.00 (50.8)	2.50 (63.5)
M	.75 (19)	1.09 (27.7)
N	2.38 (60.5)	3.13 (79.5)

How to Order

VL30N03Y

Threads:
N = NPTF
G = G tap (BSPP)

Port Size:
03 = 3/8 in/out, 3/8 exh.
04 = 1/2 in/out, 1/2 exh.
06 = 3/4 in/out, 3/4 exh.

Options (see pg 101):
A = metal muffler (i.e. VL30N03AY)
B = scissor lockout (i.e. VL30N03BY)

VL40N10Y

Threads:
- = NPTF
G = G tap (BSPP)

Port Size:
06 = 3/4 in/out, 3/4 exh.
08 = 1 in/out, 1 exh.
10 = 1 1/4 in/out, 1 exh.
12 = 1 1/2 in/out, 1 exh.

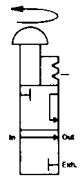
Options (see pg 101):
A = metal muffler (i.e. VL40N08AY)
B = scissor lockout (i.e. VL40N08BY)

NEED MORE PARTS AND INFORMATION?

- See page **119** for information on ordering replacement filters, bowls, etc.
- See page **101** for more information on available options.

SLO-START™ LOCKOUT VALVES

VT30/VT40 Series



VT30N03Y pictured

Application

The VT Series manual lockout valve with Slo-Start™ feature allows the operator to gradually build downstream pressure before opening to full flow conditions. Colored bright yellow with a red knob, it is easily distinguished from other air preparation components. The VT Series lockout valves can be locked in the closed position with a padlock. This helps prevent unauthorized pressurization of an air system during service or maintenance operations.

Features

- Slow start-up
- High exhaust capability
- Detented spool
- Low-friction seals
- Meets OSHA specifications
- Surface mountable

Specifications

Temperature Range: 40°F to 120° F (4.4° C to 46.9° C)

Maximum Pressure: 150 PSIG (10 bar)

Flow Media: filtered air

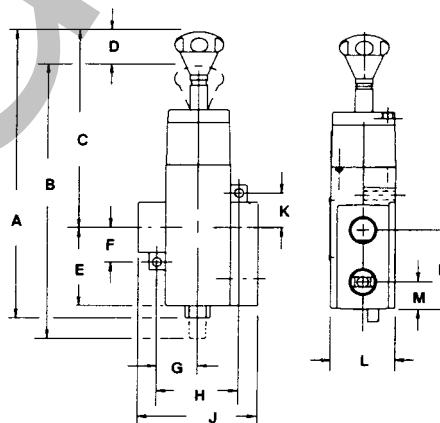
Weight: VT30 Series 2.5 lbs (1.13 kg)

VT40 Series 5.0 lbs (2.27 kg)

Cv Ratings

model number	Cv in-out	Cv out-exh	model number	Cv in-out	Cv out-exh
VT30N03Y	4.8	3.7	VT40N06Y	13.5	11.0
VT30N04Y	6.8	5.2	VT40N08Y	18.2	14.9
VT30N06Y	8.5	7.5	VT40N10Y	19.1	14.9
			VT40N12Y	20.3	16.3

Mounting Dimensions



VT30

VT40

A	9.36 (237.7)	11.45 (290.8)
B	8.86 (225)	10.97 (278.6)
C	6.48 (164.6)	7.82 (198.6)
D	.96 (24.3)	1.30 (33)
E	2.38 (60.5)	3.13 (79.5)
F	1.12 (28.6)	1.50 (38.1)
G	1.31 (33.3)	1.62 (41.3)
H	2.62 (66.6)	3.25 (82.6)
J	3.76 (95.5)	4.76 (120.9)
K	1.12 (28.6)	1.50 (38.1)
L	2.00 (50.8)	2.50 (63.5)
M	.75 (19)	1.09 (27.7)
N	2.38 (60.5)	3.13 (79.5)

How to Order

VT 30 N 03 Y

Threads:
N = NPTF
G = G tap (BSPP)

Port Size:
03 = 3/8 in/out, 3/8 exh.
04 = 1/2 in/out, 1/2 exh.
06 = 3/4 in/out, 3/4 exh.

Options (see pg 101):

A = metal muffler (i.e. VT30N03AY)
B = scissor lockout (i.e. VT30N03BY)

VT 40 N 10 Y

Threads:
- = NPTF
G = G tap (BSPP)

Port Size:
06 = 3/4 in/out, 3/4 exh.
08 = 1 in/out, 1 exh.
10 = 1 1/4 in/out, 1 exh.
12 = 1 1/2 in/out, 1 exh.

Options (see pg 101):

A = metal muffler (i.e. VT40N08AY)
B = scissor lockout (i.e. VT40N08BY)

NEED MORE PARTS AND INFORMATION?

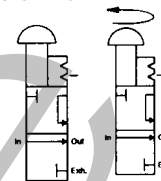
- See page **119** for information on ordering replacement filters, bowls, etc.
- See page **101** for more information on available options.

Numatics Lockout Valve Series

HIGH FLOW LOCKOUT VALVES

VL52/VT52 Series

ANSI SYMBOL



VL52N20Y pictured

Application

The high flow VL52 Series Lockout Valve is a 2-position, 3-way valve that exhausts downstream air when shifted to the closed position. Colored bright yellow with a red knob, it is easily distinguished from other air preparation products. Although the unit features large port sizes, it maintains a compact overall size. The large ports (1 1/2 & 2) allow high flow for both in-out and out-exhaust flow directions. A standard padlock can be inserted in the machined hole at the end of the plunger to lock the unit in a non-flowing condition, keeping it safe for downstream maintenance.

The VT52 Series Lockout Valve with the Slo-Start™ feature allows the operator to gradually build downstream pressure. As slow or fast as the red knob is turned counter-clockwise is in direct correlation with the amount of air passing downstream. The VT Series features the same lockout capabilities as the VL Series.

Features

- High flow
- High exhaust capability
- Detented spool
- Low-friction startup
- Meets OSHA specifications
- Surface mountable

Specifications

Temperature Range: 40°F to 120° F (4.4° C to 46.9° C)

Maximum Pressure: 150 PSIG (10 bar)

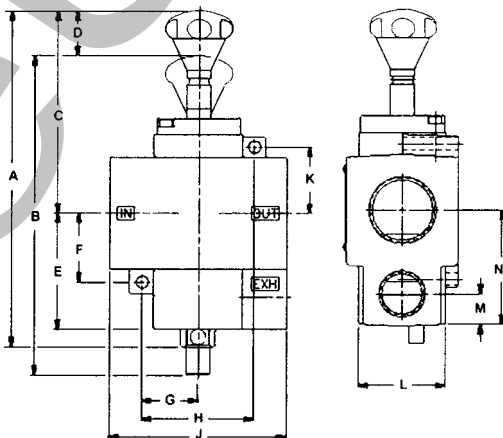
Flow Media: filtered air

Weight: VL52 Series 4.125 lbs (1.87 kg)
VT52 Series 5.5 lbs (2.5 kg)

Cv Ratings

model number	Cv in-out	Cv out-exh	model number	Cv in-out	Cv out-exh
VL52N12Y	24	16	VT52N12Y	24	16
VL52N16Y	24	16	VT52N16Y	24	16

Mounting Dimensions



	VL52	VT52
A	9.77 (248.2)	11.47 (291.3)
B	9.27 (235.5)	10.97 (278.6)
C	5.9 (149.9)	7.59 (192.8)
D	1.32 (33.5)	1.32 (33.5)
E	3.38 (85.9)	3.38 (85.9)
F	2 (50.8)	2 (50.8)
G	1.63 (41.4)	1.63 (41.4)
H	3.24 (82.3)	3.24 (82.3)
J	5.13 (130.3)	5.13 (130.3)
K	1.92 (48.8)	1.92 (48.8)
L	2.5 (63.5)	2.5 (63.5)
M	.88 (22.4)	.88 (22.4)
N	3.31 (84.1)	3.31 (84.1)

How to Order

VL52N12Y

Model:

L = standard
T = Slo-Start™ feature

Threads:

N = NPTF
G = G tap (BSPP)

Port Size:

12 = 1 1/2
16 = 2

Options (see pg 101):

A = metal muffler (i.e. VL52N12AY)
B = scissor lockout (i.e. VT52N12BY)

NEED MORE PARTS AND INFORMATION?

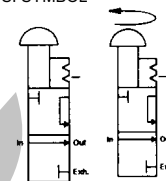
- See page **119** for information on ordering replacement filters, bowls, etc.
- See page **101** for more information on available options.

Numatics Lockout Valve Series

MODULAR LOCKOUT VALVES

MVL30/MVT30 Series

ANSI SYMBOL



MVL30N06Y pictured

Application

The MVL 30 Series lockout valve is a 2 position, 3-way valve that exhausts downstream air when shifted to the closed position. Its compact modular design saves space and reduces labor installation time. Colored bright yellow with a red knob, it is easily distinguished from other air preparation components. The MVL Series lockout valve can be locked in the closed position with a padlock.

The MVT 30 Series lockout valve with Slo-Start™ feature allows the operator to gradually build downstream pressure before opening to full flow conditions. This unit can be utilized with the Numatics modular air preparation **FLEXIBLOK**® 32 Series and directional valves.

Features

- High exhaust capability
- Detented spool
- Low-friction startup
- Meets OSHA specifications
- Modular adaptable to Numatics **FLEXIBLOK**® 32 3/4 Series

Specifications

Temperature Range: 40°F to 120° F (4.4° C to 46.9° C)

Maximum Pressure: 150 PSIG (10 bar)

Flow Media: filtered air

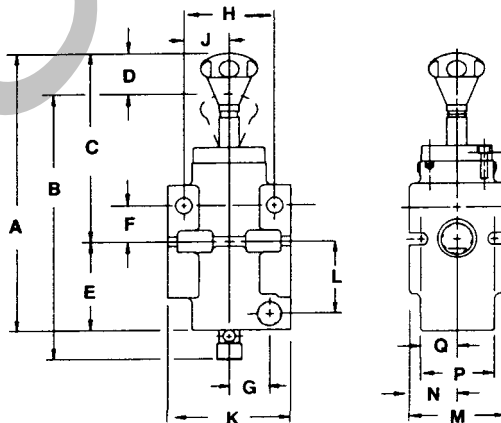
Weight: MVL30 Series 2.1 lbs (.95 kg)

MVT30 Series 4.4 lbs (2 kg)

Cv Ratings

model number	Cv in-out	Cv out-exh	model number	Cv in-out	Cv out-exh
MVL30N06Y	6.0	5.0	MVT30N06Y	6.0	5.0

Mounting Dimensions



MVL30 MVT30

A	7.54 (191.5)	8.86 (225)
B	7.54 (191.5)	8.86 (225)
C	5.16 (131)	6.48 (164.6)
D	.96 (24.4)	.96 (24.4)
E	2.38 (60.5)	2.38 (60.5)
F	.85 (21.6)	.85 (21.6)
G	1.06 (26.9)	1.06 (26.9)
H	2.5 (63.5)	2.5 (63.5)
J	1.25 (31.8)	1.25 (31.8)
K	3.2 (81.3)	3.2 (81.3)
L	1.86 (47.2)	1.86 (47.2)
M	2.68 (68)	2.68 (68)
N	1.34 (34)	1.34 (34)
P	2 (50.8)	2 (50.8)
Q	1 (25.4)	1 (25.4)

How to Order

M V L 30 N 06 Y

Model:

L = standard
T = Slo-Start™ feature

Threads:

N = NPTF
G = G tap (BSPP)

Port Size:

06 = 3/4"

Options (see pg 101):

A = metal muffler (i.e. MVL30N06AY)
B = scissor lockout (i.e. MVL30N06BY)

NEED MORE PARTS AND INFORMATION?

- See page **119** for information on ordering replacement filters, bowls, etc.
- See page **101** for more information on available options.



FRLs AND ACCESSORIES

MODULAR AIR SYSTEMS



NOTE: Lockout valve must be placed downstream of filtration equipment, which will prevent damage to components from backflow.

Application

The modular concept offers custom design capabilities for compact air control systems. This design eliminates fittings and potential air leaks, thus reducing cost, space, and installation time.

Features

- Modular adaptable to **FLEXIBLOK**® 32 Series, 3/4 port size (06)
- Easy installation and service
- Integral mounting slots
- High exhaust capacity
- Low friction startup
- Brad Harrison connection (optional)
- Exhaust reclassifier (optional)
- Slow Start Valve (optional)
- Meets OSHA specifications
- Lockable venting supply slide valve
- Common exhaust

To Order

Purchase as individual components from the selections below, or for a complete list of Numatics modular air preparation products, consult your local representative.

32 Series Modular Air Systems

Shut Off Valve	Air Prep Selection	Modular Lockout	Adapter	Valve Sub-Base	Valve																								
<p>Model Number VS32-06 = inlet port</p>				<p>Valve Series</p> <ul style="list-style-type: none"> • 125 Series • 250 Series • ISO 2 • MARK 55 <p><i>(see Numatics catalog for complete list of valve product lines)</i></p>																									
	<table border="1"> <thead> <tr> <th>Description</th> <th>Examples</th> </tr> </thead> <tbody> <tr> <td>filter/regulator/lubricator</td> <td>M32-06XFRLX</td> </tr> <tr> <td>filter-regulator</td> <td>P32B-06</td> </tr> <tr> <td>coalescer/regulator</td> <td>C32D-06</td> </tr> <tr> <td>filter-regulator/lubricator</td> <td>M32-06XPLXX</td> </tr> </tbody> </table> <p><i>(see "FlexiBlok® FRL Series" section for complete product listing)</i></p>	Description	Examples	filter/regulator/lubricator	M32-06XFRLX	filter-regulator	P32B-06	coalescer/regulator	C32D-06	filter-regulator/lubricator	M32-06XPLXX			<table border="1"> <thead> <tr> <th>Description</th> <th>Model no.</th> </tr> </thead> <tbody> <tr> <td>125 Series dual exhaust</td> <td>103-762</td> </tr> <tr> <td>250 Series common exhaust</td> <td>103-765</td> </tr> <tr> <td>ISO 2 dual exhaust</td> <td>203-880</td> </tr> <tr> <td>MARK 55 common exhaust</td> <td></td> </tr> <tr> <td><i>with plugin</i></td> <td>203-877</td> </tr> <tr> <td><i>without plugin</i></td> <td>203-876</td> </tr> </tbody> </table>	Description	Model no.	125 Series dual exhaust	103-762	250 Series common exhaust	103-765	ISO 2 dual exhaust	203-880	MARK 55 common exhaust		<i>with plugin</i>	203-877	<i>without plugin</i>	203-876	
Description	Examples																												
filter/regulator/lubricator	M32-06XFRLX																												
filter-regulator	P32B-06																												
coalescer/regulator	C32D-06																												
filter-regulator/lubricator	M32-06XPLXX																												
Description	Model no.																												
125 Series dual exhaust	103-762																												
250 Series common exhaust	103-765																												
ISO 2 dual exhaust	203-880																												
MARK 55 common exhaust																													
<i>with plugin</i>	203-877																												
<i>without plugin</i>	203-876																												
	<table border="1"> <thead> <tr> <th>Description</th> <th>Model No.</th> </tr> </thead> <tbody> <tr> <td>standard modular lockout</td> <td>MVL30N06Y</td> </tr> <tr> <td>Slo-Start™ modular lockout</td> <td>MVT30N06Y</td> </tr> </tbody> </table>	Description	Model No.	standard modular lockout	MVL30N06Y	Slo-Start™ modular lockout	MVT30N06Y		<table border="1"> <thead> <tr> <th>Description</th> <th>Kit No.</th> </tr> </thead> <tbody> <tr> <td>125 Series adapter</td> <td>219-316</td> </tr> <tr> <td>250 Series</td> <td><i>not required</i></td> </tr> <tr> <td>ISO 2 common exhaust adapter</td> <td>219-317</td> </tr> <tr> <td>MARK 55 adapter</td> <td>219-315</td> </tr> </tbody> </table>	Description	Kit No.	125 Series adapter	219-316	250 Series	<i>not required</i>	ISO 2 common exhaust adapter	219-317	MARK 55 adapter	219-315										
Description	Model No.																												
standard modular lockout	MVL30N06Y																												
Slo-Start™ modular lockout	MVT30N06Y																												
Description	Kit No.																												
125 Series adapter	219-316																												
250 Series	<i>not required</i>																												
ISO 2 common exhaust adapter	219-317																												
MARK 55 adapter	219-315																												