

SERIES SCO PRIMARY FILTERS

NUMATROL® II
PRODUCT OF NUMATICS, INC.

SPECIFICATIONS

Numatrol II systems operate on dry, nonlubricated air. Therefore, ALL air going to a Numatrol system MUST be processed through an SCO series primary filter. The system requires that standard shop air be filtered by a conventional air line filter and passed through the SCO filter. The SCO primary filter is placed in the line downstream of the standard regulator and before the lubricator which supplies power air to the machine. All dirt particles 3 microns and larger are removed.

The SCO filter is mounted on a patented subbase which has the following advantages: (1) the filter may be piped in either direction (accomplished by merely rotating the filter on the subbase 180°); (2) the filter may be replaced with a new assembly by removing the old assembly from the subbase (2 screws) and installing another one. Thus, the filter element may be installed in a relatively clean area and placed in operation with a minimum of machine down time. Complete instructions are attached to every unit.

Line mounted filters are also available at considerable cost savings. 1/2 NPTF filters have 1 quart capacity. 1/4 NPTF filters have 1/2 pint capacity.

OPERATING DATA

PRESSURE RANGE: Vacuum to 150 PSIG.

TEMPERATURE RANGE:

Polycarbonate Bowls - 140°F to 130°F ambient.

Solid Metal Bowls - 140°F to 200°F ambient.

MAINTENANCE: Replace both the SCO element and the RFO element when the RFO shows the slightest discoloration.

1 QUART

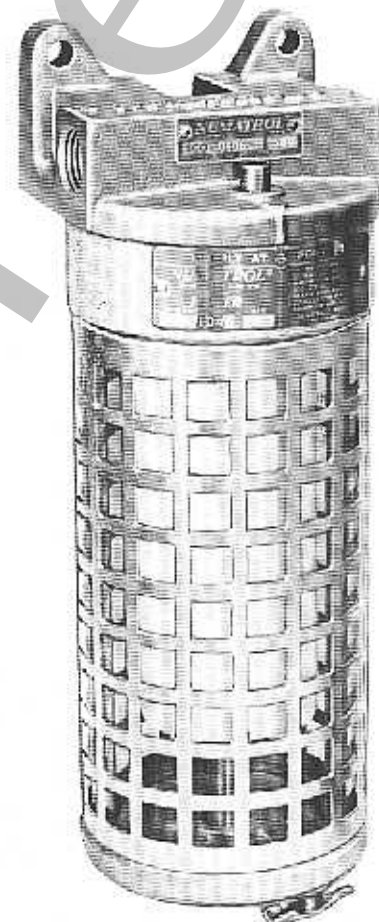


9.62 X 3.75 DIA.
1/2 NPTF

1/2 PINT



6.5 X 2.62 DIA.
1/4 NPTF



SUBBASE
MOUNTED

MODEL SELECTION CHART - SUBBASE MOUNTED

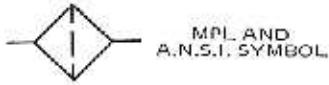
NUMBER	DESCRIPTION
SCO-0002	Filter unit only with bowl guard, no subbase
SCO-0003	Filter unit only with metal bowl, no subbase
SCO-0103	Filter unit with subbase and bowl guard, side ports only
SCO-0104	Filter unit with subbase and metal bowl, side ports only
SCO-0106	Filter unit with subbase and bowl guard, side and back ports
SCO-0107	Filter unit with subbase and metal bowl, side and back ports

MODEL SELECTION CHART - 1/2 NPTF INLINE

NUMBER	DESCRIPTION
SCO-0508	Filter with polycarbonate bowl and guard
SCO-0509	Filter with metal bowl and sight level
125-110B	Bowl guard
125-111P	Polycarbonate filter bowl
137-104P	Filter element for all models

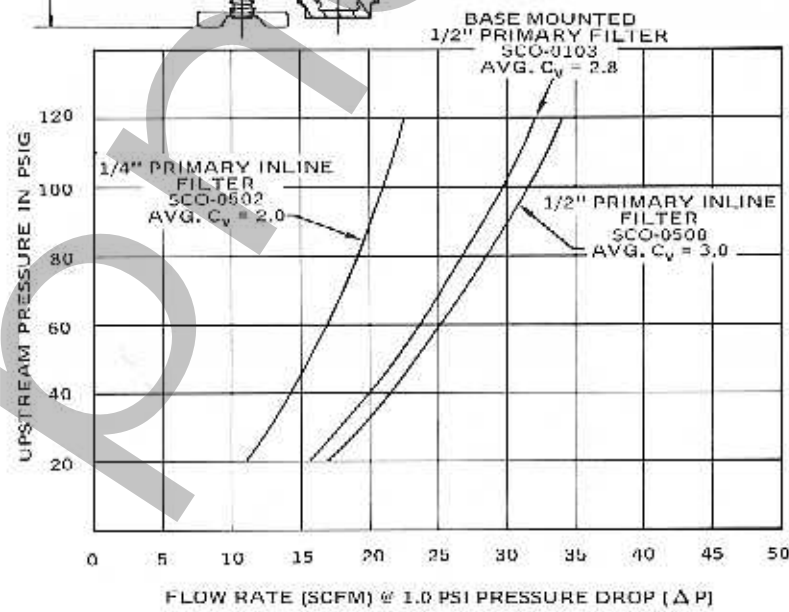
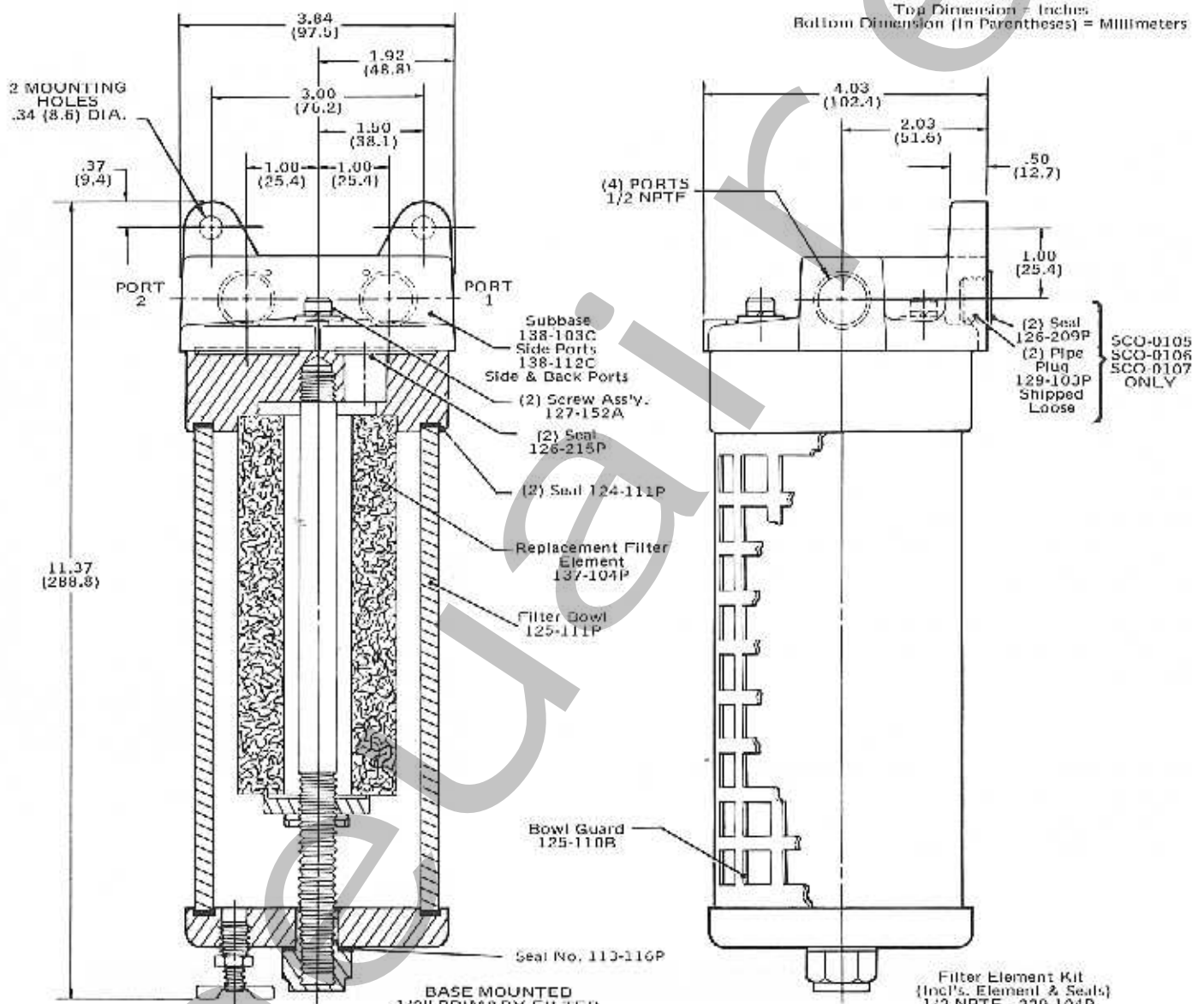
MODEL SELECTION CHART - 1/4 NPTF INLINE

NUMBER	DESCRIPTION
SCO-1502	Filter with polycarbonate bowl and guard
SCO-1503	Filter with metal bowl - no sight level
125-231P	Bowl guard
125-262P	Polycarbonate filter bowl
137-144P	Filter element for all models



SERIES SCO SUBBASE MOUNTED PRIMARY FILTERS

Top Dimension = Inches
Bottom Dimension (In Parentheses) = Millimeters



Important
Do Not Exceed Flow Rates Shown.

SERIES SCO COALESCING FILTERS

NUMATROL® II
PRODUCT OF NUMATICS, INC.

SPECIFICATIONS

The Numatrol II coalescing filter is a primary filter designed specifically to remove oil vapor and aerosols by a coalescing action. When used downstream of a standard SCO primary filter, which removes all particles larger than 3 microns, the coalescing filter will last indefinitely since it is nonclogging on oil alone. Coalescing filters will also remove all additional particles down to 0.1 micron size and provide clean, oil free instrument quality air.

Since the coalescing filter removes all particles and vapor down to 0.1 microns, it may be used without the standard filter upstream. However, the element will eventually clog and have to be replaced.

The SCO coalescing filter is mounted on a patented subbase which has the following advantages: (1) the filter may be piped in either direction (accomplished by merely rotating the filter on the subbase 180°); (2) the filter may be replaced with a new assembly by removing the old assembly from the subbase (2 screws) and installing another one. Complete instructions are attached to every unit.

Line mounted filters are also available at considerable cost savings. 1/2 NPTF filters have 1 quart capacity. 1/4 NPTF filters have 1/2 pint capacity.

OPERATING DATA

PRESSURE RANGE: Vacuum to 150 PSIG maximum.

TEMPERATURE RANGE:

Polycarbonate Bowls - +40°F to +130°F ambient.

Solid Metal Bowls - +40°F to +200°F ambient.

1 QUART

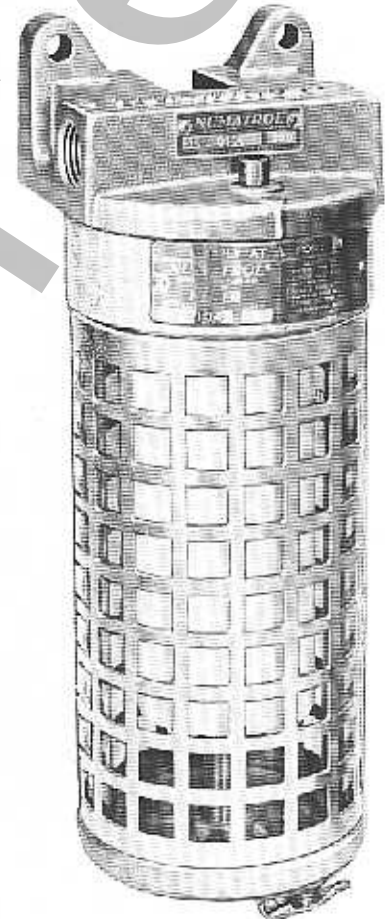


9.62 X 3.75 DIA.
1/2 NPTF

1/2 PINT



6.50 X 2.62 DIA.
1/4 NPTF

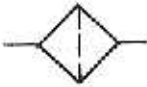


SUBBASE
MOUNTED

MODEL SELECTION CHART - SUBBASE MOUNTED	
NUMBER	DESCRIPTION
SCO-1005	Filter unit only with bowl guard, no subbase
SCO-1006	Filter unit only with metal bowl, no subbase
SCO-1109	Filter unit with subbase and bowl guard, side ports only
SCO-1110	Filter unit with subbase and metal bowl, side ports only
SCO-1112	Filter unit with subbase and bowl guard, side and back ports
SCO-1113	Filter unit with subbase and metal bowl, side and back ports

MODEL SELECTION CHART - 1/2 NPTF INLINE	
NUMBER	DESCRIPTION
SCO-1511	Filter with polycarbonate bowl and guard
SCO-0512	Filter with metal bowl and sight level
125-110B	Bowl guard
125-111P	Polycarbonate filter bowl
137-141P	Filter element for all models

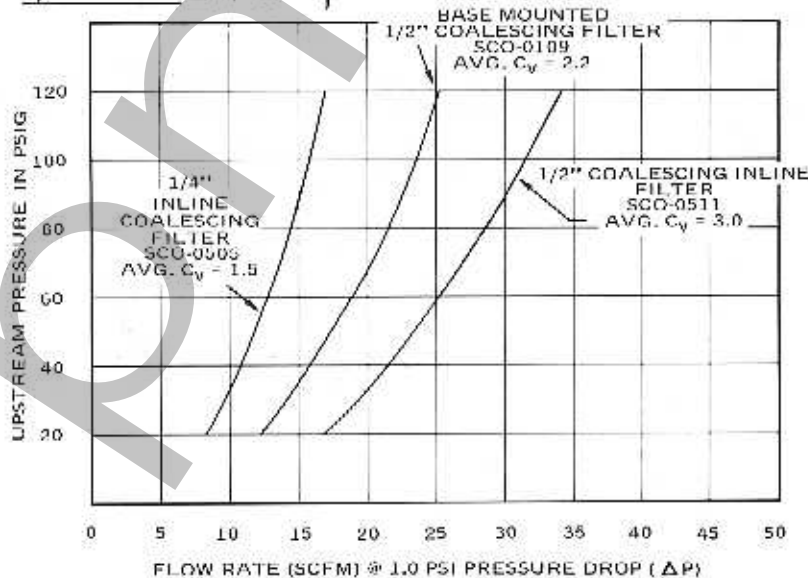
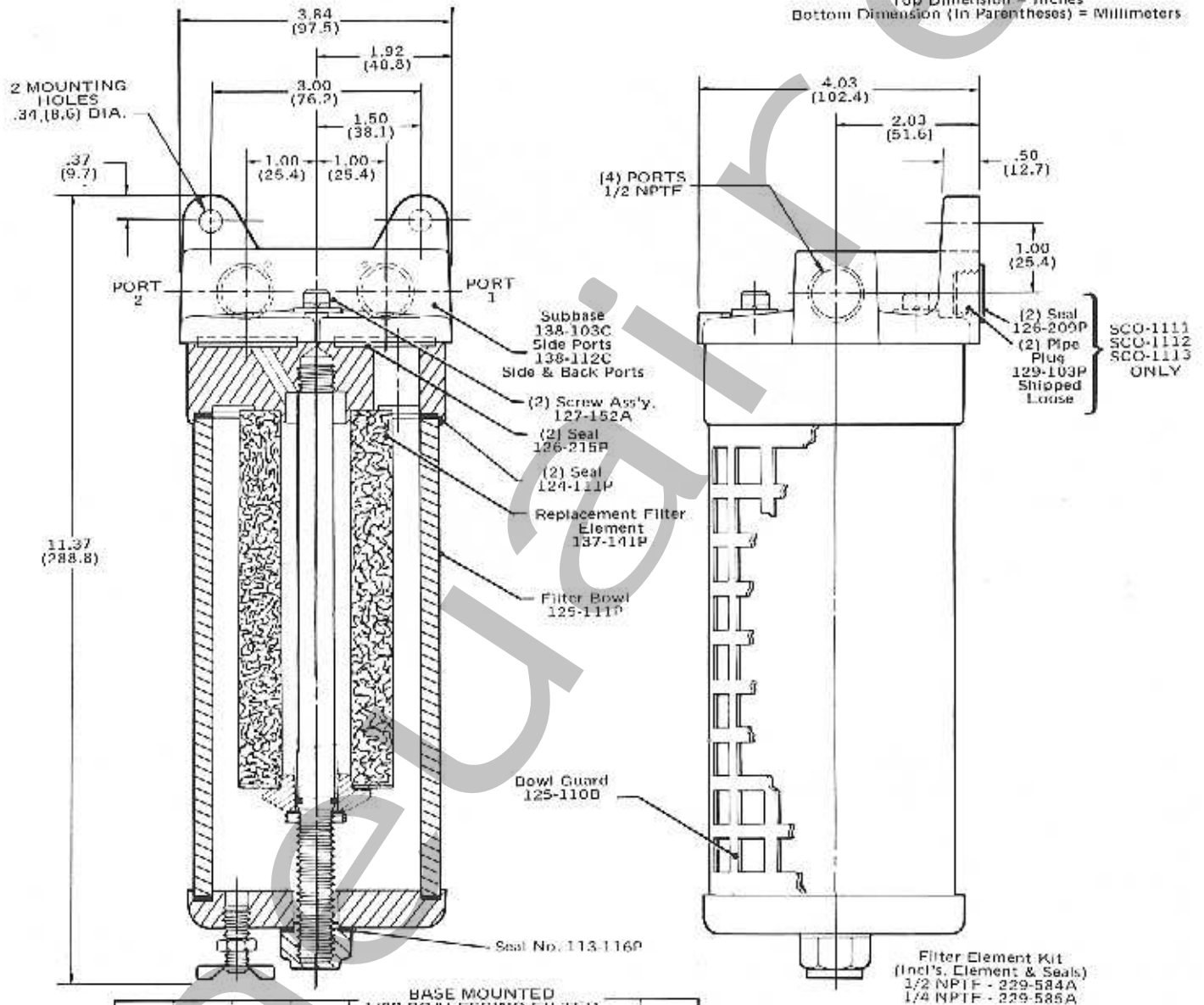
MODEL SELECTION CHART - 1/4 NPTF INLINE	
NUMBER	DESCRIPTION
SCO-1505	Filter with polycarbonate bowl and guard
SCO-0506	Filter with metal bowl, no sight level
125-231P	Bowl guard
125-262P	Polycarbonate filter bowl
137-143P	Filter element for all models



MPL AND
A.N.S.I. SYMBOL

SERIES SCO COALESCING FILTERS

Top Dimension = Inches
Bottom Dimension (In Parentheses) = Millimeters



Important
Do Not Exceed Flow
Rates Shown.