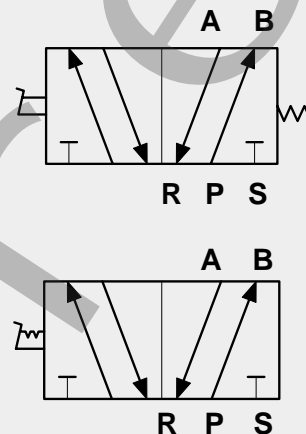




Foot Pedal Valves NAM Series

NAM Series Pedal Valve

- 5 port 4-way valve
- Nylon shell & steel reinforced base plate
- Die cast zinc alloy valve body
- Spring return & detented models
- Large opening for foot operation



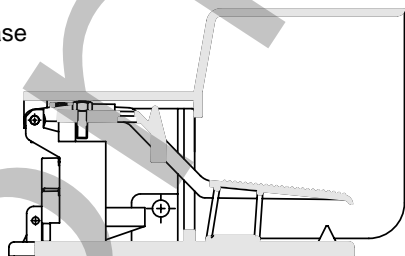
Technical Data

PORTS (NPTF)	1/4" SPRING	1/4" PEDAL
Cv		0.8
Flow Capacity		22.74 SCFM (800 NI/min)
Maximum Operating Pressure		145 PSIG (10 Bar)
Temperature Range		14°F to +155°F ambient (-10°C to +70°C ambient)
Fluid Temperature Range		14°F to +155°F ambient (-10°C to +70°C ambient)

MODEL NUMBER	TYPE	CONTROL	RETURN	PORT (BSP)	PEDAL FORCE N (lbs)	MASS kg (lbs)
NAM500100N0000		Pedal	Spring	1/4"	20 (4.5)	1.45 (3.2)
NAM500400N0000		Pedal	Pedal	1.4"	20 (4.5)	1.52 (3.4)

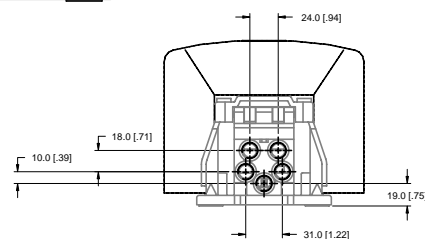
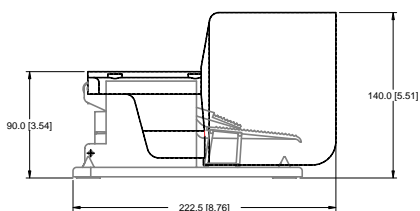
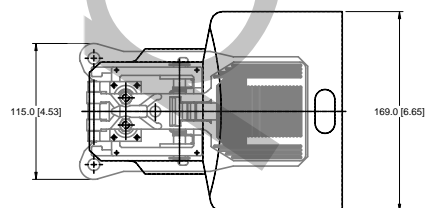
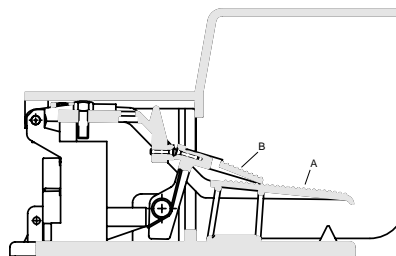
Spring Return Pedal

Press & Release
Operation



Detented Operation Pedal

Press main pedal A to
actuate & lock. Press
lock pedal B to
release



Dimensions = inches (in parentheses) = mm