

ACCESSORIES: ALIGNMENT COUPLERS

Solid Steel self-aligning piston rod couplers

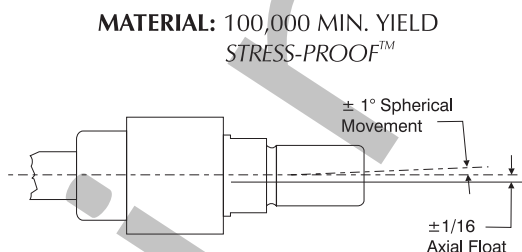
TRD's alignment couplers can virtually pay for themselves by eliminating the need to precisely mount cylinders in your applications. Our couplers prevent binding and erratic movement that misalignment causes, extending the bearing and seal life of your cylinders. Proper use of alignment couplers will allow cylinders to stroke in the shortest time possible, increasing production!

Benefits

- Rod alignment couplers eliminate expensive machining for mounting fixed or rigid cylinders on guided or slide applications.
- Cylinder efficiency is increased by eliminating friction caused by misalignment. Couplers compensate for 1° angular error and 1/16" lateral misalignment on push or pull strokes.
- Couplers provide greater reliability, performance, and reduce cylinder component wear.
- Simplifies alignment problems in the field.

Design Tips

- Alignment couplers can be exposed to high stresses that are not apparent in an application. Always use the largest thread size practical in your application. (see chart for maximum pull yields)
- Use jam nut to lock coupler to rod when used with full diameter threads (example: 5/8" thread on 5/8" rod).
- Large thread sizes can be "pinned" in high impact applications, eliminating unwanted loosening of coupler from rod. Always use the smallest pin possible to avoid weakening the piston rod thread. (example: Use a 3/32" diameter pin for 5/8" rod threads and larger)



MATERIAL: 100,000 MIN. YIELD STRESS-PROOF™



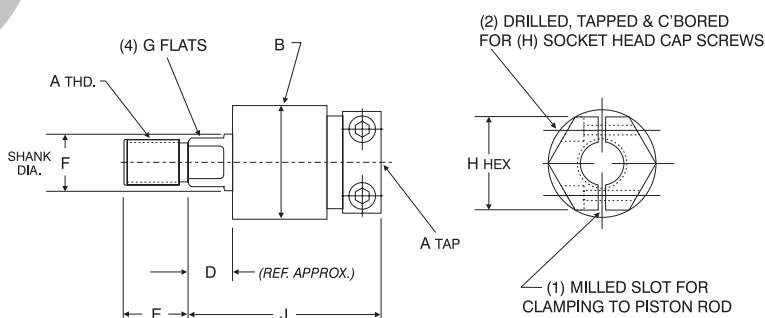
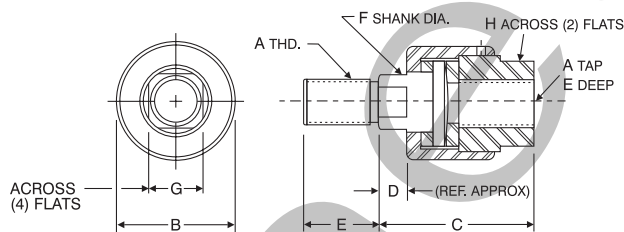
Standard AC Coupler
AC250 - AC1750



ACH Coupler
ACH312 - ACH1250

ACH SERIES

AC SERIES



ALIGNMENT COUPLER DIMENSIONS											
PART NO.	A	B	C	D	E	F	G	H	H HEX	J	MAX PULL AT YIELD
AC250	1/4-28	1 1/8	1 3/4	3/8	1/2	1/2	3/8	11/16	—	—	6,000
AC312	5/16-24	1 1/8	1 3/4	3/8	1/2	1/2	3/8	11/16	1 1/8	2	8,300
AC375	3/8-24	1 1/8	1 3/4	3/8	1/2	1/2	3/8	11/16	1 1/8	2	8,300
AC437	7/16-20	1 1/4	2	7/16	3/4	5/8	1/2	13/16	1 1/8	2 5/32	10,000
AC500	1/2-20	1 1/4	2	7/16	3/4	5/8	1/2	13/16	1 1/8	2 5/32	14,000
AC625	5/8-18	1 1/4	2	7/16	3/4	5/8	1/2	13/16	1 1/4	2 5/32	19,000
AC750	3/4-16	1 3/4	2 5/16	7/16	1 1/8	31/32	13/16	1 1/8	1 3/4	2 1/2	34,000
AC875	7/8-14	1 3/4	2 5/16	7/16	1 1/8	31/32	13/16	1 1/8	1 3/4	2 1/2	39,000
AC1000	1-14	2 1/2	2 15/16	7/16	1 5/8	1 11/32	1 5/32	1 5/8	2 1/2	2 15/16	64,000
AC1250	1 1/4-12	2 1/2	2 15/16	7/16	1 5/8	1 11/32	1 5/32	1 5/8	2 1/2	2 15/16	78,000
AC1375	1 1/2-12	2 1/2	2 15/16	7/16	1 5/8	1 11/32	1 5/32	1 5/8	—	—	78,000
AC1500	1 1/2-12	3 1/4	4 3/8	7/8	2 1/4	1 31/32	1 3/4	2 3/8	—	—	134,000
AC1750	1 3/4-12	3 1/4	4 3/8	7/8	2 1/4	1 31/32	1 3/4	2 3/8	—	—	134,000

*Please specify AC or ACH coupler when ordering; i.e.: AC750 (Std. Coupler) or ACH750 (Hex Coupler)

How to Order:

AC 250 - 312 FEMALE

(Optional alternative size*)

SERIES	SIZE	SIZE
AC	250	250
AC	312	312
AC	375	375
AC	437	437
AC	500	500
AC	625	625
AC	750	750
AC	875	875
AC	1000	1000
AC	1250	1250
AC	1375	1375
AC	1500	1500
AC	1750	1750

*You can order different thread sizes within the same size of coupler DIA. (Refer to "B" Diameter in dimension chart)

Ordering Examples:

- AC250 (AC with male & female 1/4-28 thread)
- ACH500 (ACH with male & female 1/2-20 thread)
- AC437-625 FEMALE (AC with 7/16-20 male and 5/8-18 female thread)