

Z Line Air Cylinders

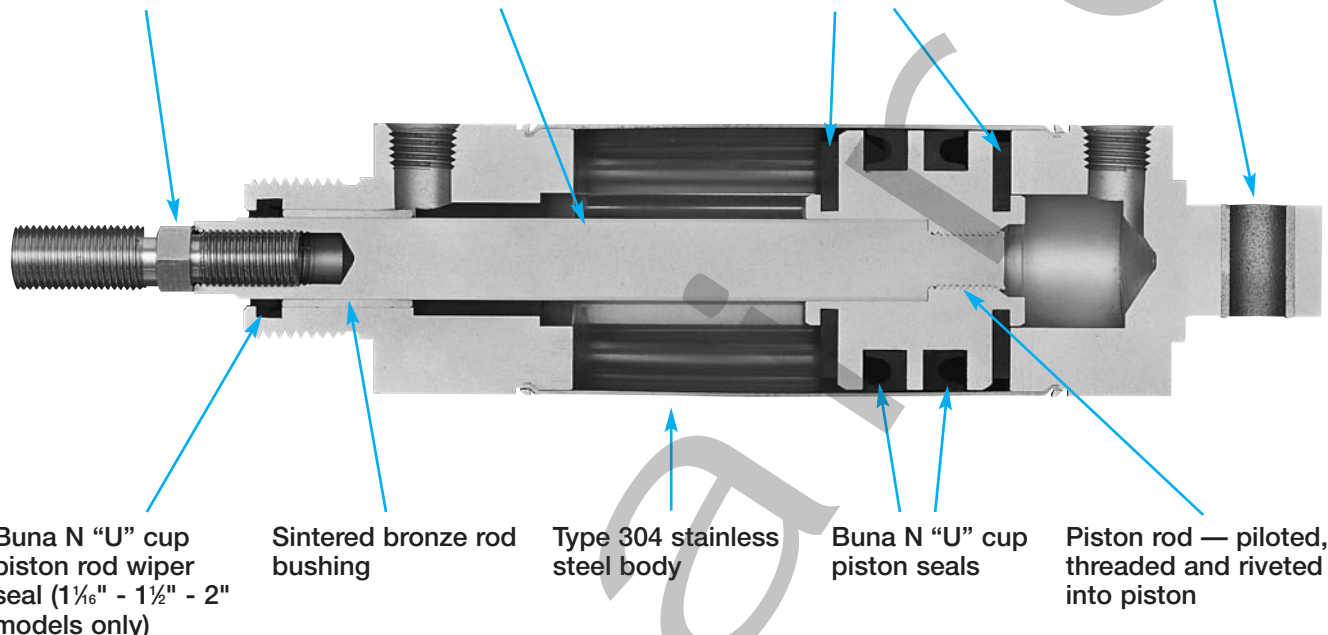
For extremely tough applications

HEX-STUD® rod end heat treated alloy steel easily removed in case of failure

Piston rod ground and polished type 303 stainless steel

CUSHION-QUIET elastomer bumpers for smooth, quiet operation

Sintered bronze pivot bushing



The Z-Line air cylinder has the rolled-in construction of the Original Line but features the following:

- Larger diameter, two-piece 303 stainless steel piston rod
- HEX-STUD rod end thread of heat treated alloy steel – easily removed in case of failure due to overload
- CUSHION QUIET elastomer bumpers

OPTIONS:

NO CHARGE:

- **MAGNALUBE G (G)**

EXTRA EXTENSION (EE), PER INCH OF EXTENSION:

- 3/4" Bore, add \$0.75
- 1 1/16" Bore, add \$0.95
- 1 1/2" Bore, add \$1.10
- 2" Bore, add \$1.25

MOLYCOATED BODY (F)

- Add \$2.30 per inch of stroke

MAGNET (prefix M)

- 3/4" Bore, add \$8.40
- 1 1/16" Bore, add \$10.45
- 1 1/2" Bore, add \$12.55
- 2" Bore, add \$14.65
- Must specify track(s) for use with miniature position sensing (T2, T3, T4) – add \$2.50 per track. See page 140 for details.

Enter Stroke Length as 3rd Digit

3/4" Bore Z Line Air Cylinders


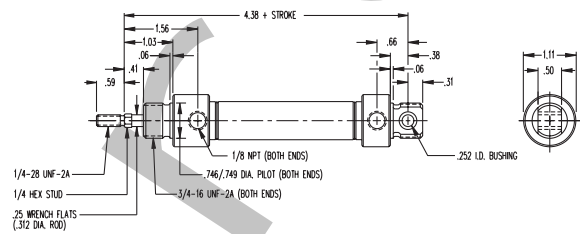

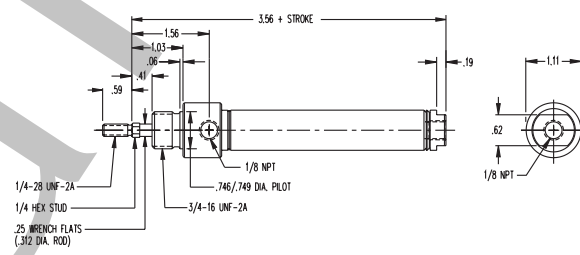
Push Force = .441 x psi • Pull Force = .365 x psi

MODEL	DESCRIPTION/WEIGHT (lbs.)	DIMENSIONS
04□-DBZ	<p>Block Mount – Double Acting – Two bolt holes are provided for positive mounting to a base.</p> <p>Standard Stroke Lengths: 1", 2", 3", 4", 5", 6"</p> <p>Maximum Stroke – 12"</p> <p>Base Weight: .30</p> <p>Adder Per Inch of Stroke: .04</p>	<p>1.56</p> <p>3.56 + STROKE</p> <p>.91</p> <p>.41</p> <p>.59</p> <p>2 HOLES DRILL & C'BORE FOR #10-32 CAP SCREW</p> <p>.75</p> <p>1/8 NPT</p> <p>.19</p> <p>1.12 SQ</p> <p>.81</p> <p>.62</p> <p>1/8 NPT</p> <p>1/4-28 UNF-2A</p> <p>1/4 HEX STUD</p> <p>.25 WRENCH FLATS (.312 DIA. ROD)</p>


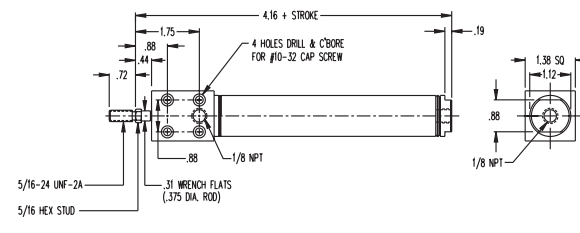

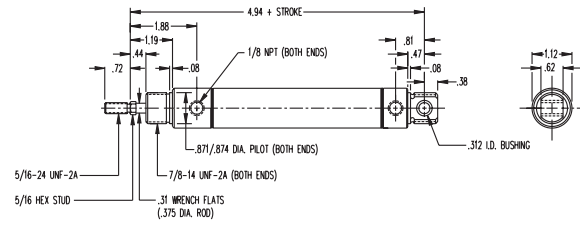
- Flow Controls
- Alignment Couplers
- Original Line Cylinders
- Cushion Cylinders
- MRS Cylinders
- Non-Rotating Cylinders
- PC Cylinders
- Z Line Cylinders
- Rod Lock Cylinders
- 500 Hydraulic Cylinders
- Hole Punchers Air Reservoirs
- Position Sens Switches

ORDER ONLINE Z Line Air Cylinders

3/4" Bore Z Line Air Cylinders (continued) Push Force = .441 x psi • Pull Force = .365 x psi

MODEL	DESCRIPTION/WEIGHT (lbs.)	DIMENSIONS
 <p>04-DUZ</p>	<p><i>Universal Mount – Double Acting – For double end mounting use D-8315 mounting bracket. For rear pivot mounting use D-8321-A pivot bracket. Use D-10139-A rod clevis.</i></p> <p>Standard Stroke Lengths: 1", 2", 3", 4", 5", 6", 7", 8", 9", 10", 11", 12"</p> <p>Maximum Stroke – 32" Base Weight: .30 Adder Per Inch of Stroke: .04</p>	 <p>4.38 + STROKE 1.56 1.03 .06 .41 .59 1/8 NPT (BOTH ENDS) .746/.749 DIA. PILOT (BOTH ENDS) 3/4-16 UNF-2A (BOTH ENDS) .25 WRENCH FLATS (.312 DIA. ROD) 1/4-28 UNF-2A 1/4 HEX STUD 1/8 NPT (BOTH ENDS) .66 .38 .06 -.31 1.11 .50 252 LD. BUSHING</p>
 <p>04-DZ</p>	<p><i>Nose Mount – Double Acting – Use D-8315 mounting bracket.</i></p> <p>Standard Stroke Lengths: 1", 2", 3", 4", 5", 6"</p> <p>Maximum Stroke – 12" Base Weight: .27 Adder Per Inch of Stroke: .04</p>	 <p>3.56 + STROKE 1.56 1.03 .06 .41 .59 1/8 NPT .746/.749 DIA. PILOT 3/4-16 UNF-2A .25 WRENCH FLATS (.312 DIA. ROD) 1/4-28 UNF-2A 1/4 HEX STUD 1/8 NPT .19 1.11 .62 1/8 NPT</p>


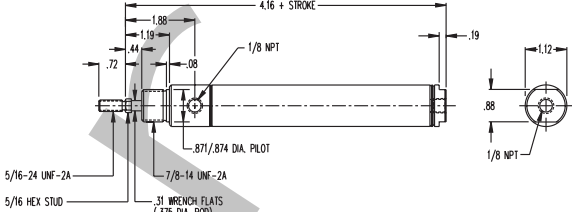
1-1/16" Bore Z Line Air Cylinders Push Force = .886 x psi • Pull Force = .776 x psi

MODEL	DESCRIPTION/WEIGHT (lbs.)	DIMENSIONS
 <p>09-DBZ</p>	<p><i>Block Mount – Double Acting – Four bolt holes are provided for positive mounting to a base.</i></p> <p>Standard Stroke Lengths: 1", 2", 3", 4", 5", 6"</p> <p>Maximum Stroke – 12" Base Weight: .55 Adder Per Inch of Stroke: .06</p>	 <p>4.16 + STROKE 1.75 .88 .44 .72 4 HOLES DRILL & C'BORE FOR #10-32 CAP SCREW 1/8 NPT .88 31 WRENCH FLATS (.375 DIA. ROD) 5/16-24 UNF-2A 5/16 HEX STUD .19 1.38 SQ 1.12 .88 1/8 NPT</p>
 <p>09-DUZ</p>	<p><i>Universal Mount – Double Acting – For double end mounting use D-8316 mounting bracket. For rear pivot mounting use D-8322-A pivot bracket. Use D-8309-A rod clevis.</i></p> <p>Standard Stroke Lengths: 1", 2", 3", 4", 5", 6", 7", 8", 9", 10", 11", 12"</p> <p>Maximum Stroke – 32" Base Weight: .45 Adder Per Inch of Stroke: .06</p>	 <p>4.94 + STROKE 1.88 1.19 .44 .72 1/8 NPT (BOTH ENDS) .08 .81 .47 .08 -.38 1.12 .62 312 LD. BUSHING 5/16-24 UNF-2A 5/16 HEX STUD 31 WRENCH FLATS (.375 DIA. ROD) 7/8-14 UNF-2A (BOTH ENDS) .871/.874 DIA. PILOT (BOTH ENDS)</p>

Z Line Air Cylinders


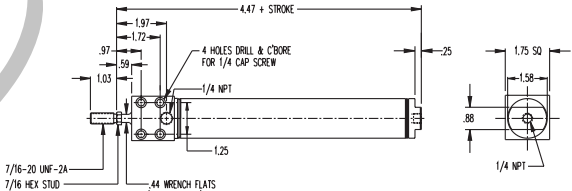

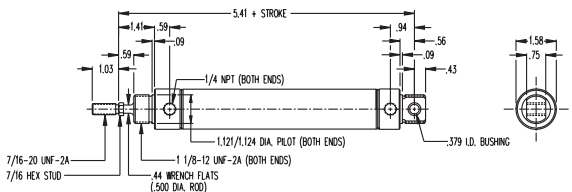

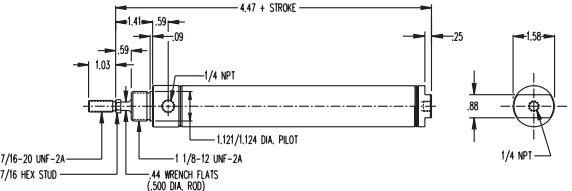
1-1/16" Bore Z Line Air Cylinders (continued)

Push Force = .886 x psi • Pull Force = .776 x psi

MODEL	DESCRIPTION/WEIGHT (lbs.)	DIMENSIONS
09□-DZ 	<p>Nose Mount – Double Acting – Use D-8316 mounting bracket.</p> <p>Standard Stroke Lengths: 1", 2", 3", 4", 5", 6"</p> <p>Maximum Stroke – 12"</p> <p>Base Weight: .38</p> <p>Adder Per Inch of Stroke: .06</p>	

1-1/2" Bore Z Line Air Cylinders

Push Force = 1.77 x psi • Pull Force = 1.57 x psi

MODEL	DESCRIPTION/WEIGHT (lbs.)	DIMENSIONS
17□-DBZ 	<p>Block Mount – Double Acting – Four bolt holes are provided for positive mounting to a base.</p> <p>Standard Stroke Lengths: 1", 2", 3", 4", 5", 6"</p> <p>Maximum Stroke – 12"</p> <p>Base Weight: 1.00</p> <p>Adder Per Inch of Stroke: .10</p>	
17□-DUZ 	<p>Universal Mount – Double Acting – For double end mounting use D-8324 mounting bracket. For rear pivot mounting use D-8324-A pivot bracket. Use D-8311-A rod clevis.</p> <p>Standard Stroke Lengths: 1", 2", 3", 4", 5", 6", 7", 8", 9", 10", 11", 12"</p> <p>Maximum Stroke – 32"</p> <p>Base Weight: .92</p> <p>Adder Per Inch of Stroke: .10</p>	
17□-DZ 	<p>Nose Mount – Double Acting – Use D-8318 mounting bracket.</p> <p>Standard Stroke Lengths: 1", 2", 3", 4", 5", 6"</p> <p>Maximum Stroke – 12"</p> <p>Base Weight: .78</p> <p>Adder Per Inch of Stroke: .10</p>	


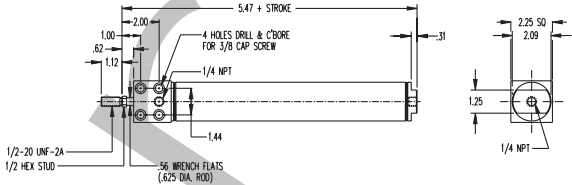

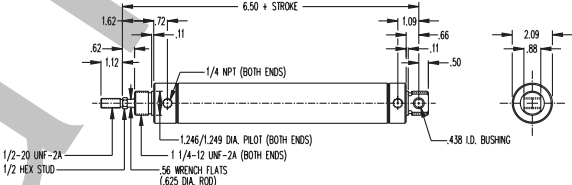

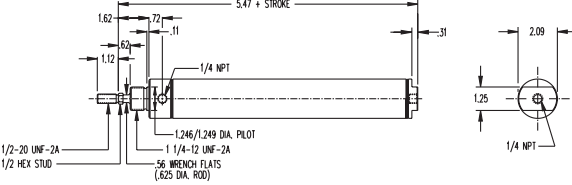
- Flow Controls
- Alignment Couplers
- Original Line Cylinders
- Cushion Cylinders
- MRS Cylinders
- Non-Rotating Cylinders
- PC Cylinders
- Z Line Cylinders
- Rod Lock Cylinders
- 500 Hydraulic Cylinders
- Hole Punchers Air Reservoirs
- Position Sens Switches

ORDER
ONLINE

Z Line Air Cylinders

2" Bore Z Line Air Cylinders

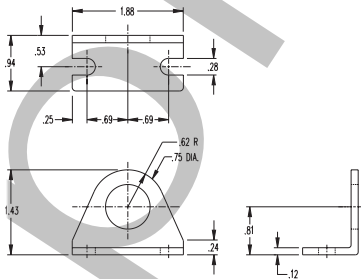
Push Force = 3.14 x psi • Pull Force = 2.83 x psi

MODEL	DESCRIPTION/WEIGHT (lbs.)	DIMENSIONS
 <p>31-DBZ</p>	<p><i>Block Mount – Double Acting – Four bolt holes are provided for positive mounting to a base.</i></p> <p>Standard Stroke Lengths: 1", 2", 3", 4", 5", 6"</p> <p>Maximum Stroke – 12" Base Weight: 2.03 Adder Per Inch of Stroke: .15</p>	
 <p>31-DUZ</p>	<p><i>Universal Mount – Double Acting – For double end mounting use D-8319 mounting bracket. For rear pivot mounting use D-8325-A pivot bracket. Use D-8313-A rod clevis.</i></p> <p>Standard Stroke Lengths: 1", 2", 3", 4", 5", 6", 7", 8", 9", 10", 11", 12"</p> <p>Maximum Stroke – 32" Base Weight: 2.15 Adder Per Inch of Stroke: .15</p>	
 <p>31-DZ</p>	<p><i>Nose Mount – Double Acting – Use D-8319 mounting bracket.</i></p> <p>Standard Stroke Lengths: 1", 2", 3", 4", 5", 6"</p> <p>Maximum Stroke – 12" Base Weight: 1.91 Adder Per Inch of Stroke: .15</p>	

Z Line Accessories

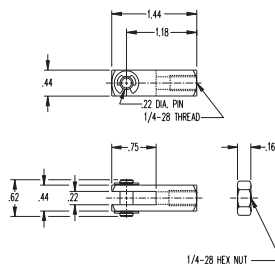
3/4" Bore Accessories

D-8315



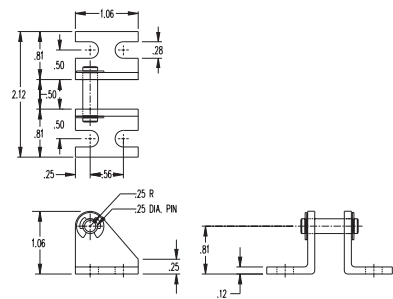
Mounting Bracket

D-10139-A



Rod Clevis

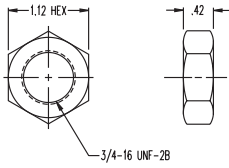
D-8321-A



Pivot Bracket

3/4" Bore Accessories (continued)

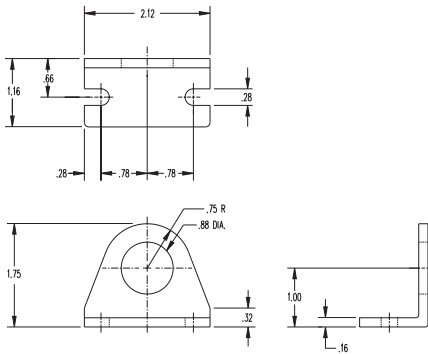
D-3556



Mounting Nut

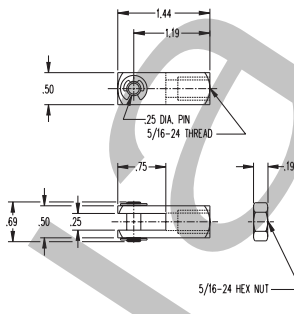
1-1/16" Bore Accessories

D-8316



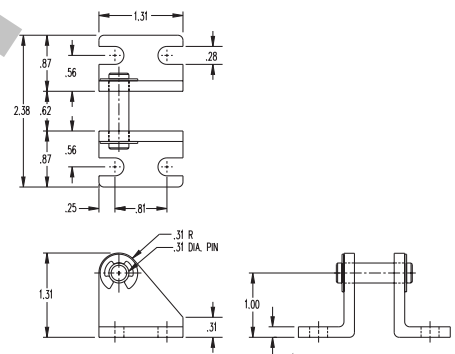
Mounting Bracket

D-8309-A



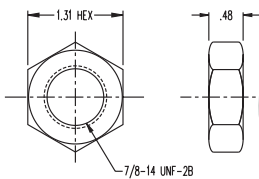
Rod Clevis

D-8322-A



Pivot Bracket

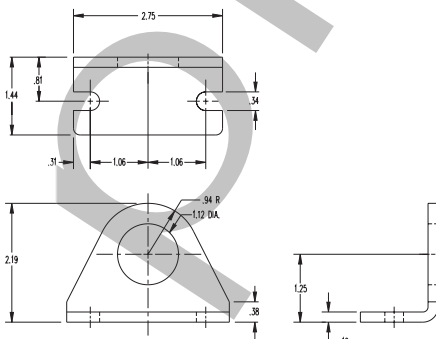
D-2545



Mounting Nut

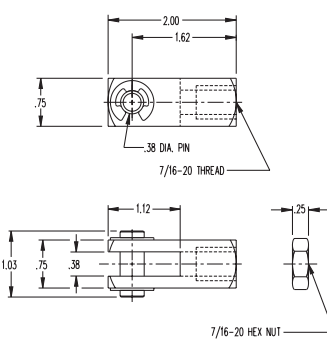
1-1/2" Bore Accessories

D-8318



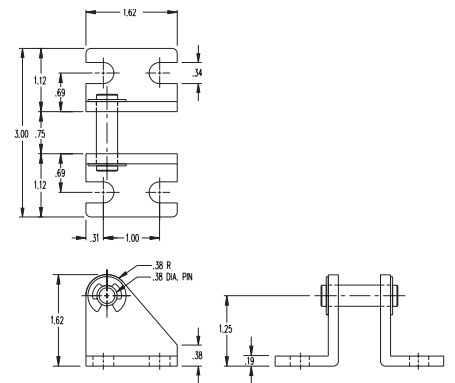
Mounting Bracket

D-8311-A



Rod Clevis

D-8324-A



Pivot Bracket

Flow
Controls

Alignment
Couplers

Original Line
Cylinders

Cushion
Cylinders

MRS
Cylinders

Non-Rotating
Cylinders

PC
Cylinders

Z Line
Cylinders

Rod Lock
Cylinders

500 Hydraulic
Cylinders

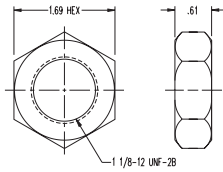
Hole Punchers
Air Reservoirs

Position Sens
Switches

Z Line Accessories continued

1-1/2" Bore Accessories (continued)

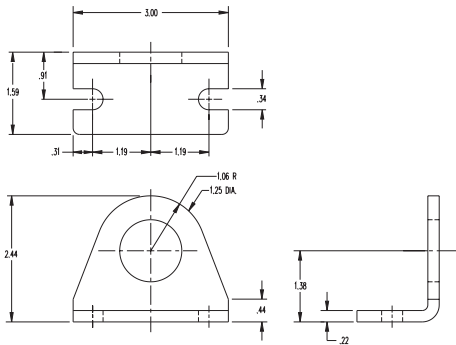
D-8484



Mounting Nut

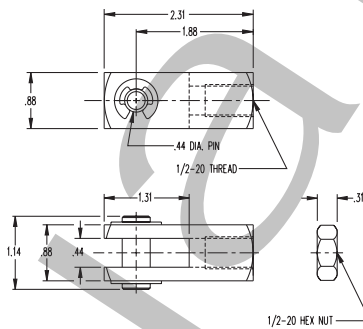
2" Bore Accessories

D-8319



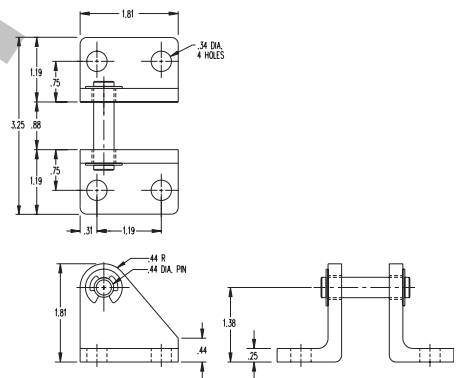
Mounting Bracket

D-8313-A



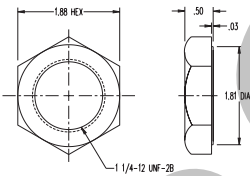
Rod Clevis

D-8325-A



Pivot Bracket

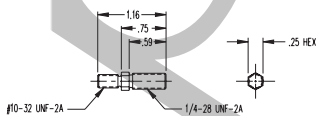
D-508



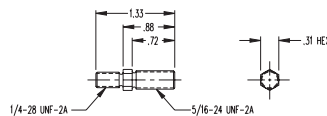
Mounting Nut

Hex-Stud

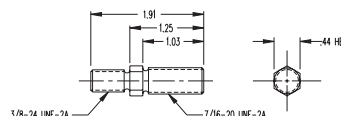
**3/4" BORE
D-9868**



**1 1/16" BORE
D-6583**



**1 1/2" BORE
D-6636**



**2" BORE
D-6637**

