



Hydraulic Cylinders

HEX-STUD® made from heat treated alloy steel. In case of failure due to overload, the hexagon portion will remain in rod and can be easily removed

Sintered bronze piston rod guide bushing

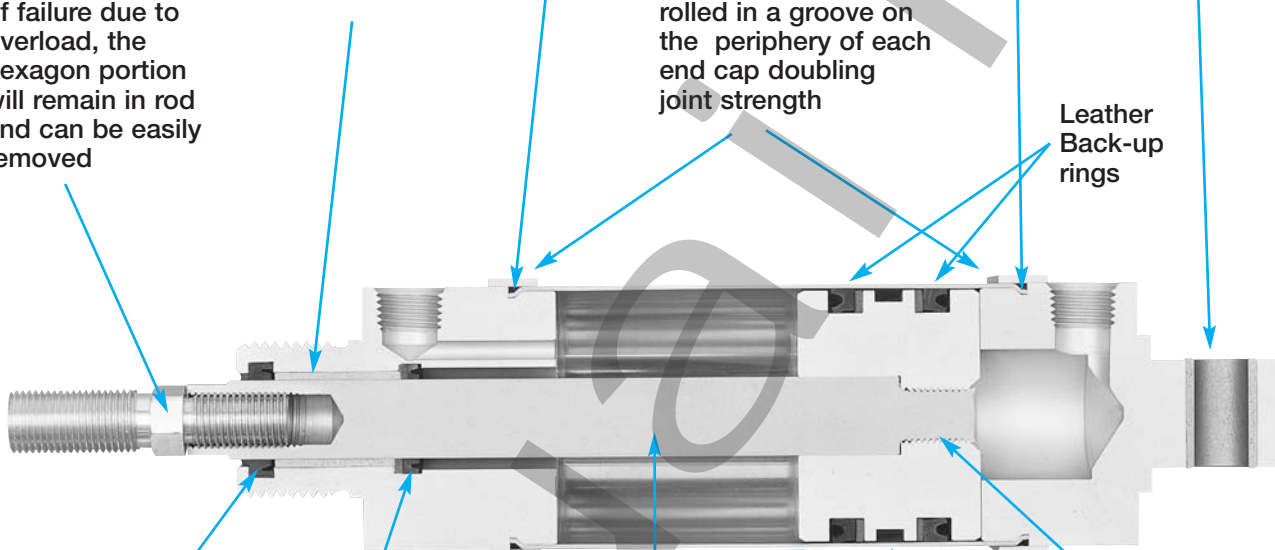
"O" ring

TIE-BANDS reinforce both ends of type 304 stainless steel body rolled in a groove on the periphery of each end cap doubling joint strength

"O" ring

Sintered bronze pivot bushing

Leather Back-up rings



High strength aluminum alloy endcaps & piston

Buna N rod wiper seal assures dry drip free piston rod

Block V seal with back up washer

Piston rod — hard chrome plated 85,000 to 100,000 psi min. yield steel

Filled PTFE bearing

Piston rod piloted into piston — threaded and riveted

Buna N block V seals with back up washers

The Bimba "500" is a precision built, compact, lightweight hydraulic cylinder designed specifically for hydraulic use only, at pressures up to 500 psi.

- Rated 500 PSI Hydraulic (non-shock), Double Acting

OPTIONS:

EXTRA EXTENSION (EE), PER INCH OF EXTENSION:

- 1 1/16" Bore, add \$0.90 per inch
- 1 1/2" Bore, add \$1.15 per inch
- 2" Bore, add \$1.35 per inch

PORTS ROTATED 90 DEGREES (K) (no charge)

Enter Stroke Length as 3rd Digit

OPTIONS continued...

MAGNET (prefix M)

Example: HM-096-DZ

- 4" stroke or greater required
- Overall length increases by 0.25"
- 1 1/16" Bore, add \$10.45
- 1 1/2" Bore, add \$12.55
- 2" Bore, add \$14.65

FLUOROELASTOMER SEALS (V)

- Specify for compatibility
- 1 1/16" Bore, add \$20.00
- 1 1/2" Bore, add \$25.00
- 2" Bore, add \$30.00

Flow Controls

Alignment Couplers

Original Line Cylinders

Cushion Cylinders

MRS Cylinders

Non-Rotating Cylinders

PC Cylinders

ZLine Cylinders

Rod Lock Cylinders

500 Hydraulic Cylinders


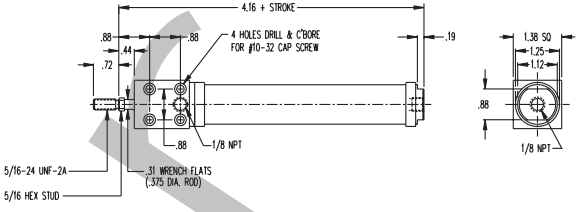

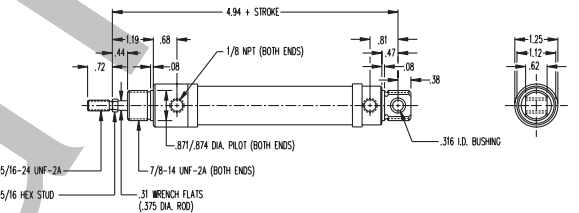

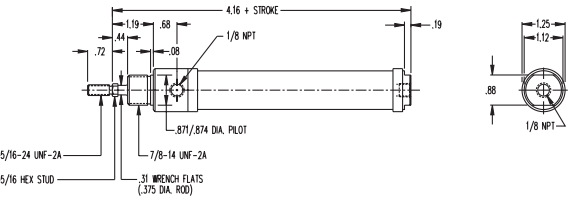
Hole Punchers Air Reservoirs

Position Sens Switches

"500" Hydraulic Cylinders


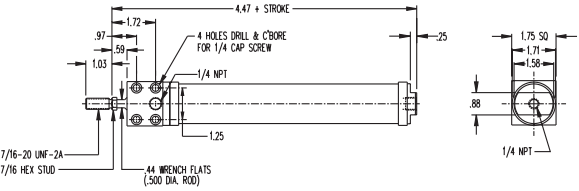
1-1/16" Bore "500" Hydraulic Cylinders

Push Force = .886 x psi • Pull Force = .776 x psi

MODEL	DESCRIPTION/WEIGHT (lbs.)	DIMENSIONS
H-09□-DBZ 	<p><i>Front Block Mount</i> Standard Stroke Lengths: 1", 2", 3", 4", 5", 6" Maximum Stroke – 12" Base Weight: .57 Adder Per Inch of Stroke: .06</p>	
H-09□-DUZ 	<p><i>Universal Mount – Double End or Rear Pivot</i> Standard Stroke Lengths: 1", 2", 3", 4", 5", 6", 7", 8", 9", 10", 11", 12" Maximum Stroke – 32" Optional Accessories: D-8316 Mounting Bracket D-8322-A Pivot Bracket D-8309-A Clevis Base Weight: .50 Adder Per Inch of Stroke: .06</p>	
H-09□-DZ 	<p><i>Nose Mount</i> Standard Stroke Lengths: 1", 2", 3", 4", 5", 6", 7" Maximum Stroke – 12" Optional Accessory: D-8316 Mounting Bracket Base Weight: .43 Adder Per Inch of Stroke: .06</p>	

1-1/2" Bore "500" Hydraulic Cylinders


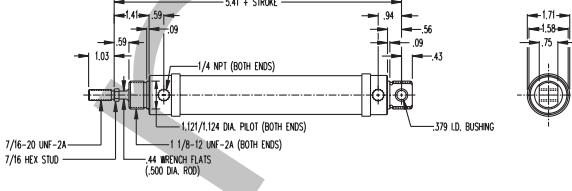

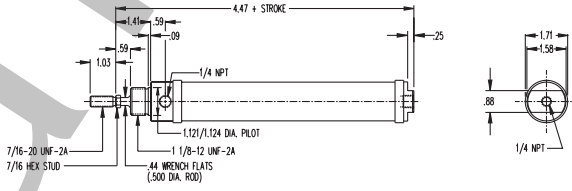
Push Force = 1.77 x psi • Pull Force = 1.57 x psi

MODEL	DESCRIPTION/WEIGHT (lbs.)	DIMENSIONS
H-17□-DBZ 	<p><i>Front Block Mount</i> Standard Stroke Lengths: 1", 2", 3", 4", 5", 6" Maximum Stroke – 12" Base Weight: 1.00 Adder Per Inch of Stroke: .10</p>	

ORDER ONLINE "500" Hydraulic Cylinders


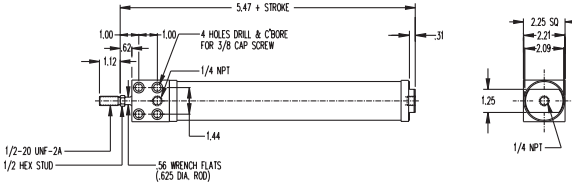

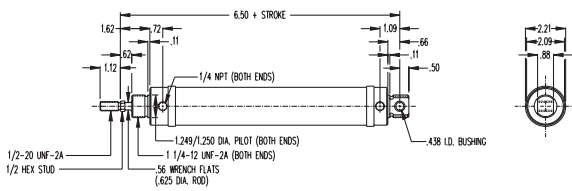
1-1/2" Bore "500" Hydraulic Cylinders (continued)

Push Force = 1.77 x psi • Pull Force = 1.57 x psi

MODEL	DESCRIPTION/WEIGHT (lbs.)	DIMENSIONS
 <p>H-17□-DUZ</p>	<p><i>Universal Mount – Double End or Rear Pivot</i> Standard Stroke Lengths: 1", 2", 3", 4", 5", 6", 7", 8", 9", 10", 11", 12" Maximum Stroke – 32" Optional Accessories: D-8318 Mounting Bracket D-8324-A Pivot Bracket D-8311-A Clevis Base Weight: .95 Adder Per Inch of Stroke: .10</p>	
 <p>H-17□-DZ</p>	<p><i>Nose Mount</i> Standard Stroke Lengths: 1", 2", 3", 4", 5", 6", 7", 8", 9", 10", 11", 12" Maximum Stroke – 12" Optional Accessory: D-8318 Mounting Bracket Base Weight: .84 Adder Per Inch of Stroke: .10</p>	

2" Bore "500" Hydraulic Cylinders

Push Force = 3.14 x psi • Pull Force = 2.83 x psi

MODEL	DESCRIPTION/WEIGHT (lbs.)	DIMENSIONS
 <p>H-31□-DBZ</p>	<p><i>Front Block Mount</i> Standard Stroke Lengths: 1", 2", 3", 4", 5", 6" Maximum Stroke – 12" Base Weight: 1.90 Adder Per Inch of Stroke: .24</p>	
 <p>H-31□-DUZ</p>	<p><i>Universal Mount – Double End or Rear Pivot</i> Standard Stroke Lengths: 1", 2", 3", 4", 5", 6", 7", 8", 9", 10", 11", 12" Maximum Stroke – 32" Optional Accessories: D-8319 Mounting Bracket D-8325-A Pivot Bracket D-8313-A Clevis Base Weight: 1.75 Adder Per Inch of Stroke: .24</p>	


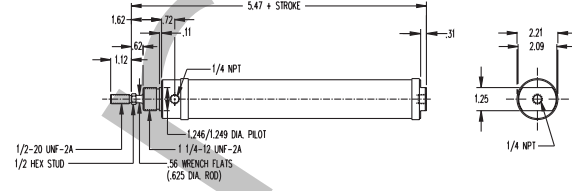
- Flow Controls
- Alignment Couplers
- Original Line Cylinders
- Cushion Cylinders
- MRS Cylinders
- Non-Rotating Cylinders
- PC Cylinders
- Z-Line Cylinders
- Rod Lock Cylinders
- 500 Hydraulic Cylinders
- Hole Punchers Air Reservoirs
- Position Sens Switches

ORDER
ONLINE

"500" Hydraulic Cylinders

2" Bore "500" Hydraulic Cylinders (continued)

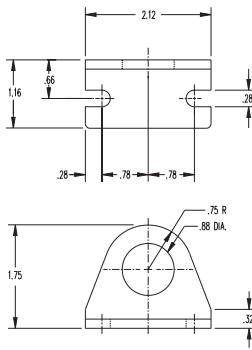
Push Force = 3.14 x psi • Pull Force = 2.83 x psi

MODEL	DESCRIPTION/WEIGHT (lbs.)	DIMENSIONS
<p>H-31 □ -DZ</p> 	<p><i>Nose Mount</i> Standard Stroke Lengths: 1", 2", 3", 4", 5", 6" Maximum Stroke – 12" Optional Accessory: D-8319 Mounting Bracket Base Weight: 1.63 Adder Per Inch of Stroke: .24</p>	 <p>1.62 .72 1.12 1/4 NPT 1.246/1.249 DIA. PLEOT 1/4-12 UNF-2A .55 WRENCH FLATS (.625 DIA. ROD) 5.47" + STROKE 1/2-20 UNF-2A 1/2 HEX 5100 1.25 2.21 2.09 1/4 NPT</p>

"500" Hydraulic Cylinder Accessories

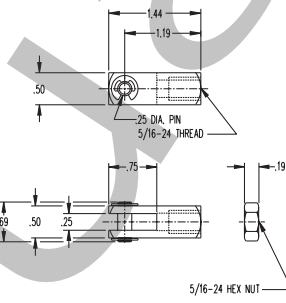
1-1/16" Bore Accessories

D-8316



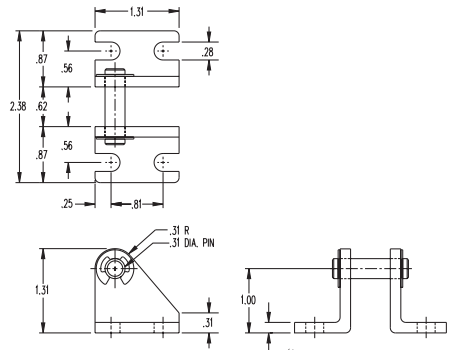
Mounting Bracket

D-8309-A



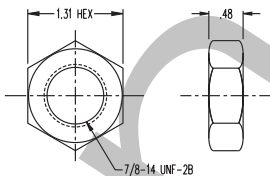
Rod Clevis

D-8322-A



Pivot Bracket

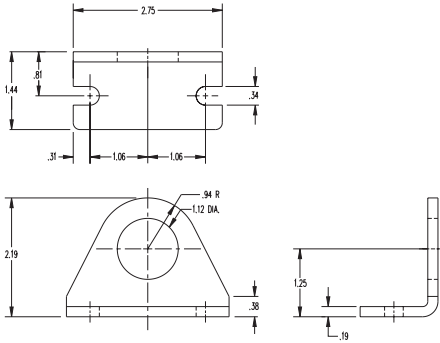
D-2545



Mounting Nut

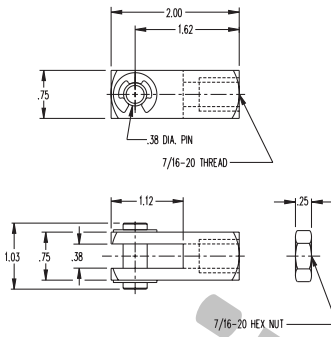
1-1/2" Bore Accessories

D-8318



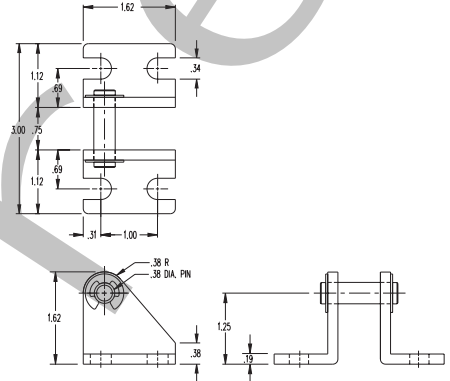
Mounting Bracket

D-8311-A



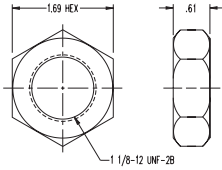
Rod Clevis

D-8324-A



Pivot Bracket

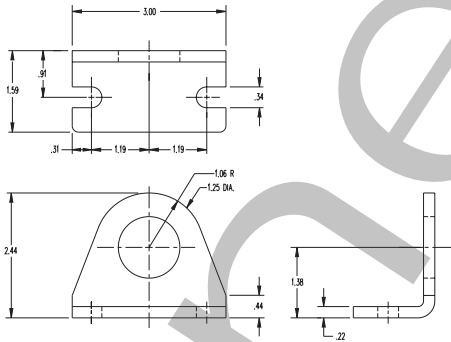
D-8484



Mounting Nut

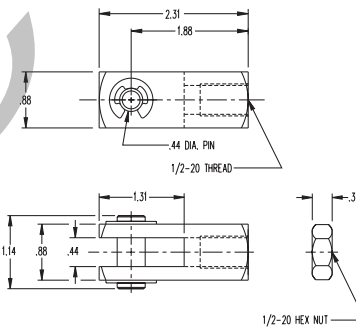
2" Bore Accessories

D-8319



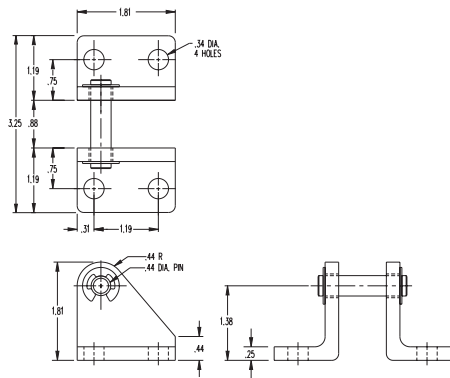
Mounting Bracket

D-8313-A



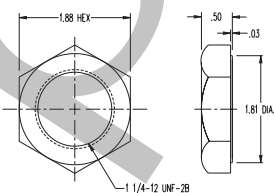
Rod Clevis

D-8325-A



Pivot Bracket

D-508



Mounting Nut

Flow Controls

Alignment Couplers

Original Line Cylinders

Cushion Cylinders

MRS Cylinders

Non-Rotating Cylinders

PC Cylinders

ZLine Cylinders

Rod Lock Cylinders

500 Hydraulic Cylinders

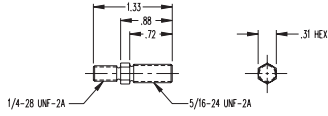
Hole Punchers Air Reservoirs

Position Sens Switches

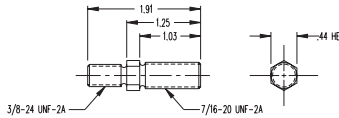
"500" Hydraulic Cylinder Accessories continued

Hex-Stud

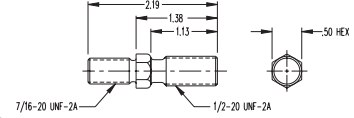
**1 1/16" BORE
D-6583**



**1 1/2" BORE
D-6636**



**2" BORE
D-6637**



3 & 4 Way Disc Air Valves

MODEL	DESCRIPTION/WEIGHT (lbs.)	DIMENSIONS
<p>MODEL 3MV8</p>	<p><i>3 Way Disc Air Valve – Operates single acting cylinders. Full 1/8" orifice – 1/8" NPT inlet and outlet ports. To operate, a precision lapped disc is rotated through 60° by means of a ball handle which will hold set position. To repair, remove handle and retaining ring.</i> Weight: .22</p>	
<p>MODEL 4MV8</p>	<p><i>4 Way Disc Air Valve – Operates double acting cylinders. Ball handle will rotate through 120° and will hold set position – 1/8" NPT ports are located 120° apart – orifice 1/8" diameter. To repair, remove handle and retaining ring.</i> Weight: .22</p>	