

Air-to-Air Booster Cylinder



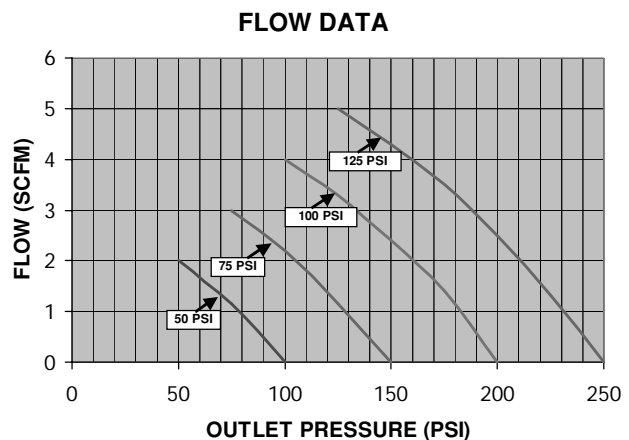
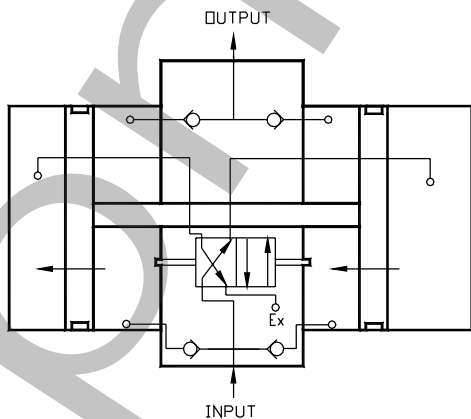
This 2:1 ratio air-to-air booster is small and self-contained and incorporates integral valve components to reciprocate. It was developed to amplify inadequate air pressure since doubling the input pressure can increase the output force of a cylinder where space constraints exist.

How to Order and List Prices

Model/Price	Dimensions (inch)
Model Number: CSS-00118-A Availability: Stock Item Maximum Inlet Pressure: 125 psi Prelubricated with HT-99	

Engineering Specifications

- Maximum Input Pressure: 125 psi
- Operating Temperature: 15° to 160° F
- Lubrication: HT-99 oil
- Bodies and Center Section: Aluminum; Hard Coat with PTFE
- Mounting Plate: Anodized Aluminum
- Charging Time (example): 28 seconds to fully boost 1 gallon reservoir



Flow Controls

Alignment Couplers

Original Line Cylinders

Cushion Cylinders

MRS Cylinders

Non-Rotating Cylinders

PC Cylinders

ZLine Cylinders

Rod Lock Cylinders

500 Hydraulic Cylinders

Hole Punchers Air Reservoirs

Position Sens Switches