



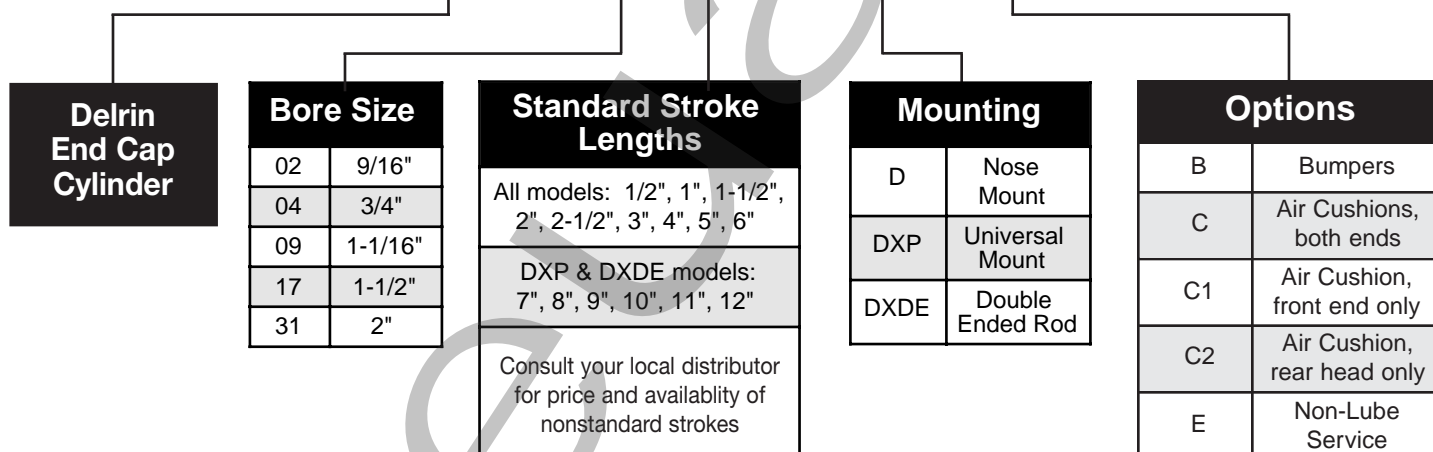
The Bimba PC Cylinder has a stainless steel body, stainless steel rod and acetal resin end caps. It is ideal for applications and environments that require exposure to moisture, lubricants and specific solvents.

How to Order

The model number of all PC Cylinders consists of three alphanumeric clusters. These designate product type, bore size and stroke length, and options. Please refer

to the charts below for an example of model number PC-096-DXPW. This is an 1-1/16" bore, 6" stroke PC cylinder with a universal mount and rod wiper.

PC - 09 6 - DXP W



Approximate Power Factors

9/16"	=	0.2
3/4"	=	0.4
1-1/16"	=	0.9
1-1/2"	=	1.7
2"	=	3.1

For example, a PC-096-DXPW will exert a force of 0.9 times the air line pressure; a PC-173-D will exert a force of 1.7 times the air pressure, etc.

- Flow Controls
- Alignment Couplers
- Original Line Cylinders
- Cushion Cylinders
- MRS Cylinders
- Non-Rotating Cylinders
- PC Cylinders
- ZLine Cylinders
- Rod Lock Cylinders
- 500 Hydraulic Cylinders
- Hole Punchers Air Reservoirs
- Position Sens Switches

List Prices

Bore	Mounting		Stroke Adder*	Options											
	D	DXP		B Bumpers	C	C1 or C2	C with V D & DXP	C1V or C2V** D & DXP	EE Extra Extension per inch	F Molycoated Body per inch	K Pivot 90° (DXP only)	M Magnetic Piston	T Switch Track (T2,T3,T4)	V Fluoro-elastomer Seals	W Rod Wiper
9/16" (02)	\$27.15	\$28.95	\$1.35	\$3.65	N/A	N/A	N/A	N/A	\$.70	\$2.30	N/C	\$8.40	\$2.50 per Track	\$9.50	N/A
3/4" (04)	\$28.85	\$30.95	\$1.35	\$3.65	\$13.80	\$6.90	\$29.35	\$22.45	\$.70	\$2.30		\$8.40		\$9.50	\$2.50
1-1/16" (09)	\$30.35	\$32.85	\$1.35	\$3.65	\$15.20	\$7.60	\$33.10	\$25.50	\$.70	\$2.30		\$10.45		\$11.40	\$2.50
1-1/2" (17)	\$38.80	\$42.50	\$2.10	\$4.40	\$17.70	\$8.85	\$36.70	\$27.85	\$1.05	\$2.30		\$12.55		\$12.55	\$2.50
2" (31)	\$60.85	\$65.80	\$2.30	\$5.65	\$28.80	\$14.40	\$56.70	\$42.30	\$1.15	\$2.30		\$14.65		\$16.10	\$2.50

Bore	Mounting		Stroke Adder*	Options									
	DXDE	B Bumpers		C	C with V**	C1V	EE Extra Extension per inch	F Molycoated Body per inch	M Magnetic Piston	T Switch Track (T2,T3,T4)	V Fluoro-elastomer Seals	W Rod Wiper	
9/16" (02)	\$37.95	\$1.80	\$3.65	N/A	N/A	N/A	\$.90	\$2.30	\$8.40	\$2.50 per Track	\$12.55	N/A	
3/4" (04)	\$42.45	\$1.80	\$3.65	\$13.80	\$32.65	\$25.45	\$.90	\$2.30	\$8.40		\$12.55	\$5.00	
1-1/16" (09)	\$44.80	\$1.80	\$3.65	\$15.20	\$36.00	\$28.40	\$.90	\$2.30	\$10.45		\$14.45	\$5.00	
1-1/2" (17)	\$58.65	\$3.35	\$4.40	\$17.70	\$42.10	\$33.25	\$1.70	\$2.30	\$12.55		\$16.10	\$5.00	
2" (31)	\$85.35	\$3.45	\$5.65	\$28.80	\$61.65	\$47.25	\$1.75	\$2.30	\$14.65		\$21.30	\$5.00	

***Nonstandard fractional strokes are priced to the next full inch increment.**

****Price adder includes the cushion and the fluoroelastomer seals.**

No charge Option - G, NT, Q

NOTE: See Original Line portion of the catalog for option E pricing.

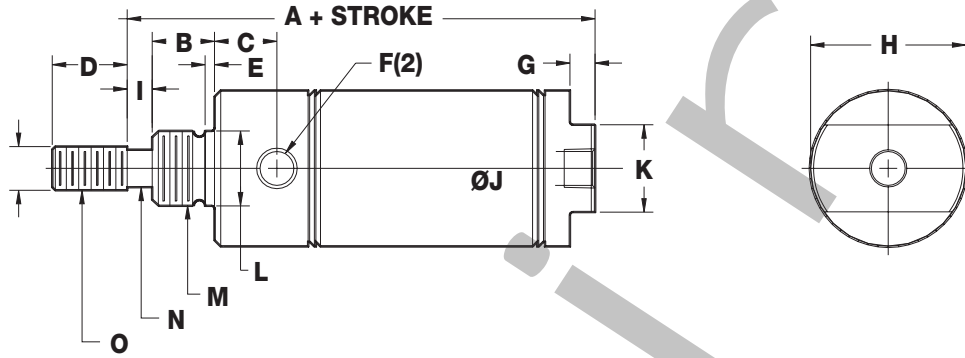
Stainless Steel Accessory Prices

Bore	Rod End Clevis		Mounting Nut	
	Model	Price	Model	Price
9/16" (02)	D-850-SS	\$16.20	D-154-SS	\$.85
3/4" (04)	D-54565-SS	\$17.90	D-9-SS	\$1.25
1-1/16" (09)	D-54564-SS	\$20.30	D-9-SS	\$1.25
1-1/2" (17)	D-54562-SS	\$24.95	D-1331-SS	\$2.10
2" (31)	D-54563-SS	\$29.50	D-508-SS	\$4.50

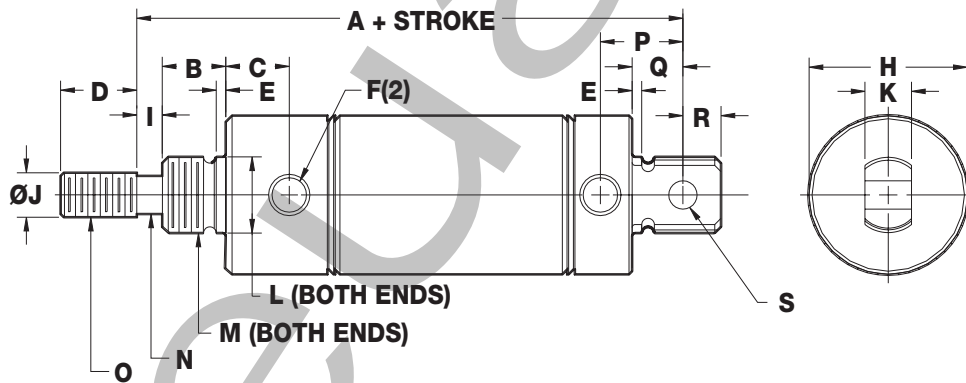
Bore	Foot Bracket		Pivot Bracket	
	Model	Price	Model	Price
9/16" (02)	D-770-SS	\$4.15	D-55202-SS	\$11.40
3/4" (04)	D-129-SS	\$4.55	D-55203-SS	\$13.85
1-1/16" (09)	D-129-SS	\$4.55	D-55203-SS	\$13.85
1-1/2" (17)	D-61288-SS	\$9.50	D-55204-SS	\$17.25
2" (31)	D-615-SS	\$20.35	D-55205-SS	\$21.50

Dimensions

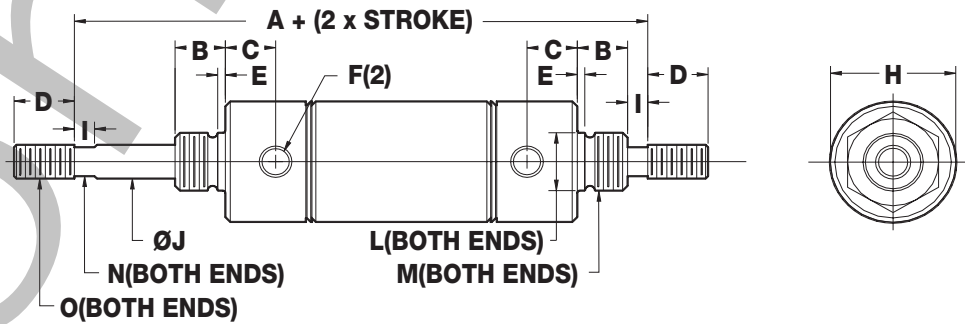
D Mounting Style



DXP Mounting Style



DXDE Mounting



Flow Controls

Alignment Couplers

Original Line Cylinders

Cushion Cylinders

MRS Cylinders

Non-Rotating Cylinders

PC Cylinders

ZLine Cylinders

Rod Lock Cylinders

500 Hydraulic Cylinders

Hole Punchers Air Reservoirs

Position Sens Switches

Dimensions

D Mounting Style

Bore	A	A (cushion or Q option)	B	C	D	E	F	G	H	H (cushion option)	I	J	K	L	M	N	O
9/16" (02)	2.28	--	0.38	0.38	0.50	0.06	#10-32	0.19	0.61	--	--	0.19	0.50	.434/.437	7/16-20	--	#10-32
3/4" (04)	2.97	3.44	0.50	0.47	0.50	0.09	1/8 NPT	0.19	0.81	0.96	--	0.25	0.63	.621/.624	5/8-18	--	1/4-28
1-1/16" (09)	3.25	3.50	0.50	0.56	0.50	0.09	1/8 NPT	0.19	1.13	1.13	0.13	0.31	0.88	.621/.624	5/8-18	0.25	5/16-24
1-1/2" (17)	3.69	3.88	0.63	0.63	0.75	0.09	1/8 NPT	0.25	1.56	1.56	0.25	0.44	0.88	.996/.999	1-14	0.38	7/16-20
2" (31)	4.69	5.27	0.81	0.72	0.88	0.13	1/4 NPT	0.31	2.08	2.08	0.38	0.63	1.25	1.372/1.375	1-1/4-12	0.50	1/2-20

Magnetic Piston Length Adder: 0.125" for 1-1/16" and 1-1/2", all other sizes 0.250"

DXP Mounting Style

Bore	A	B	C	D	E	F	H	H (cushion option)	I	J
9/16" (02)	2.56	0.38	0.38	0.50	0.06	#10-32	0.61	--	--	0.19
3/4" (04)	3.75	0.50	0.47	0.50	0.09	1/8 NPT	0.86	0.96	--	0.25
1-1/16" (09)	3.84	0.50	0.56	0.50	0.09	1/8 NPT	1.13	1.13	0.13	0.31
1-1/2" (17)	4.38	0.63	0.63	0.75	0.09	1/8 NPT	1.56	1.56	0.25	0.44
2" (31)	5.63	0.81	0.73	0.88	0.13	1/4 NPT	2.08	2.08	0.38	0.63

Bore	K	L	M	N	O	P	Q	R	S
9/16" (02)	0.31	.434/.437	7/16-20	--	#10-32	0.38	0.25	0.19	0.16
3/4" (04)	0.38	.621/.624	5/8-18	--	1/4-28	0.63	0.34	0.28	0.25
1-1/16" (09)	0.38	.621/.624	5/8-18	0.25	5/16-24	0.63	0.34	0.28	0.25
1-1/2" (17)	0.63	.996/.999	1-14	0.38	7/16-20	0.81	0.50	0.38	0.38
2" (31)	0.74	1.372/1.375	1-1/4-12	0.50	1/2-20	1.03	0.56	0.44	0.38

Magnetic Piston Length Adder: 0.125" for 1-1/16" and 1-1/2", all other sizes 0.250"

DXDE Mounting

Bore	A	B	C	D	E	F	H	H (cushion option)	I	J	L	M	N	O
9/16" (02)	2.94	0.38	0.38	0.50	0.06	#10-32	0.61	--	--	0.19	.434/.437	7/16-20	--	#10-32
3/4" (04)	4.00	0.50	0.47	0.50	0.09	1/8 NPT	0.86	0.96	--	0.25	.621/.624	5/8-18	--	1/4-28
1-1/16" (09)	4.00	0.50	0.56	0.50	0.09	1/8 NPT	1.13	1.13	0.13	0.31	.621/.624	5/8-18	0.25	5/16-24
1-1/2" (17)	5.13	0.63	0.63	0.75	0.09	1/8 NPT	1.56	1.56	0.25	0.44	.996/.999	1-14	0.38	7/16-20
2" (31)	6.56	0.81	0.73	0.88	0.13	1/4 NPT	2.08	2.08	0.38	0.63	1.372/1.375	1-1/4-12	0.50	1/2-20

Magnetic Piston Length Adder: 0.250"

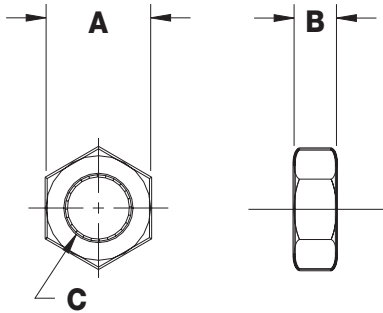
Bumper Length Adder

9/16" (02)	3/4" (04)	1-1/16" (09)	1-1/2" (17)	2" (31)
0.125	0	0.125*	0.125	0.250

***For DXDE model, add 0.500"**

Dimensions

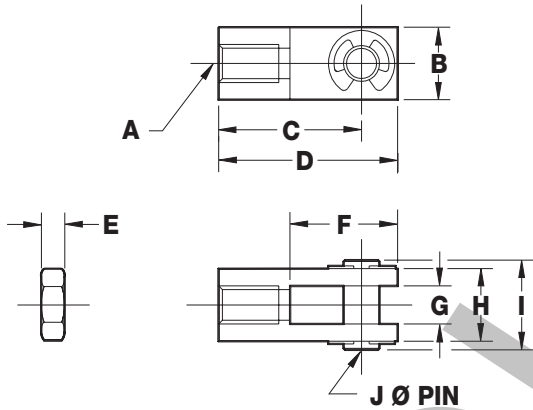
Stainless Steel Mounting Nut*



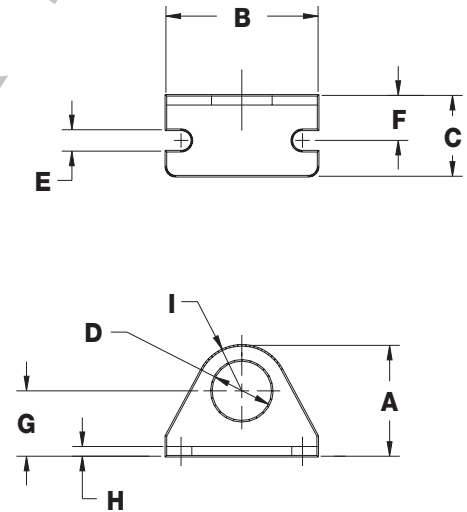
Bore	Model	A	B	C
9/16" (02)	D-154-SS	0.69	0.25	7/16-20
3/4" (04)	D-9-SS	0.94	0.38	5/8-18
1-1/16" (09)	D-9-SS	0.94	0.38	5/8-18
1-1/2" (17)	D-1331-SS	1.50	0.55	1-14
2" (31)	D-508-SS	1.88	0.50	1-1/4-12

*See page 110 for torque specifications

Stainless Steel Rod End Clevis (includes nut)



Stainless Steel Foot Bracket



Stainless Steel Rod End Clevis (includes nut)

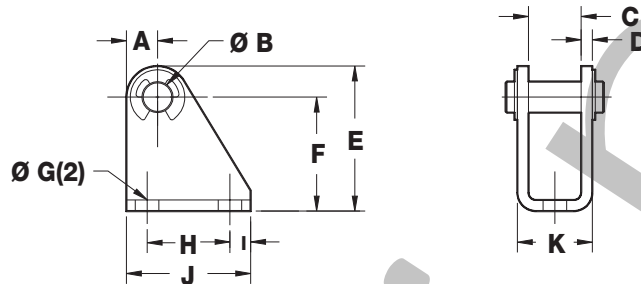
Bore	Model	A	B	C	D	E	F	G	H	I	J
9/16" (02)	D-850-SS	#10-32	0.38	0.75	0.94	0.13	0.56	0.19	0.38	0.56	0.19
3/4" (04)	D-54565-SS	1/4-28	0.50	0.94	1.19	0.16	0.69	0.25	0.50	0.69	0.25
1-1/16" (09)	D-54564-SS	5/16-24	0.50	0.94	1.19	0.19	0.69	0.25	0.50	0.69	0.25
1-1/2" (17)	D-54562-SS	7/16-20	0.75	1.31	1.69	0.25	0.94	0.38	0.75	1.03	0.38
2" (31)	D-54563-SS	1/2-20	0.75	1.31	1.69	0.31	0.94	0.38	0.75	1.03	0.38

Stainless Steel Foot Bracket

Bore	Model	A	B	C	D	E	F	G	H	I
9/16" (02)	D-770-SS	0.84	1.38	0.69	0.44	0.19	0.38	0.56	0.09	0.38
3/4" (04)	D-129-SS	0.14	1.88	1.00	0.63	0.27	0.56	0.81	0.12	0.56
1-1/16" (09)	D-129-SS	0.14	1.88	1.00	0.63	0.27	0.56	0.81	0.12	0.56
1-1/2" (17)	D-61288-SS	1.75	2.50	1.50	1.03	0.28	0.75	1.00	0.12	0.75
2" (31)	D-615-SS	2.50	3.13	1.63	1.38	0.34	1.00	1.50	0.25	1.00

Dimensions

Stainless Steel Pivot Bracket



Bore	Model	A	B	C	D	E	F	G	H	I	J	K
9/16" (02)	D-55202-SS	0.20	0.16	0.31	0.06	0.76	0.56	0.20	0.50	0.13	0.75	0.44
3/4" (04)	D-55203-SS	0.31	0.25	0.38	0.12	1.19	0.88	0.22	0.75	0.19	1.13	0.63
1-1/16" (09)	D-55203-SS	0.31	0.25	0.38	0.12	1.19	0.88	0.22	0.75	0.19	1.13	0.63
1-1/2" (17)	D-55204-SS	0.38	0.38	0.63	0.13	1.75	1.38	0.28	1.00	0.25	1.50	0.91
2" (31)	D-55205-SS	0.38	0.38	0.75	0.25	1.75	1.38	0.28	1.00	0.25	1.50	1.25

Specifications

Pressure Rating: 100 psi (Air)

Temperature Range: 32°F to 160°F (0°C to 72°C)

Delrin End Caps

304 Stainless Steel Body

303 Stainless Steel Rod

Anodized Aluminum Alloy Piston

Options: Buna N Bumpers

Polyurethane Wiper

Fluoroelastomer Seals (for compatibility only,
not high temperature)

CYLINDER WEIGHT (lbs.)					
Bore	Base Weight			Adder per 1"	
	D	DXP	DXDE	D & DXP	DXDE
9/16" (02)	0.05	0.06	0.07	0.02	0.03
3/4" (04)	0.13	0.15	0.18	0.03	0.05
1-1/16" (09)	0.21	0.25	0.3	0.05	0.07
1-1/2" (17)	0.46	0.48	0.6	0.08	0.13
2" (31)	1.08	1.17	1.48	0.15	0.24

MOUNTING NUT Torque Specifications		
Bore Size	Thread Size	Max Torque (in- lbs.)
9/16" (02)	7/16-20	4.0
3/4" (04) 1-1/16" (09)	5/8-18	12.0
1-1/2" (17)	1-14	30.0
2" (31)	1 1/4-12	45.0