

Related
Equipment

Regulator AR30 to 60

How to Order



AR30

AR 30 - F 03 BE - 1N

Regulator

Body size

30	3/8
40	1/2
50	3/4
60	1

Thread type

Nil	Metric thread (M5)
	Rc
N	NPT
F	G

Port size

02	1/4
03	3/8
04	1/2
06	3/4
10	1

Optional specifications

Symbol	Contents	Applicable models
1 Note 1)	0.02 to 0.2MPa setting	AR30 to 60
N	Non-relieving	AR30 to 60
R	Flow direction: Right to left	AR30 to 60
Z Note 2)	Display units for product name plate and pressure gauge: PSI, °F.	AR30 to 60

When more than one specification is required, indicate in ascending alphanumeric order.

Note 1) The only difference from the standard specifications is the adjusting spring for the regulator. It does not restrict the setting of 0.2MPa or more.

Note 2) For M5 and NPT thread types. Under the New Measurement Law, the product is only sold outside Japan. (The SI unit is used inside Japan.)

Option

Symbol	Contents	Applicable models
Nil	—	—
B Note 1)	With bracket	AR30 to 60
E	With square embedded type pressure gauge (with limit indicator)	AR30 to 60
G Note 2)	Round pressure gauge (with limit indicator)	AR30 to 60
P	Panel mount (with set nut)	AR30 to 40

Note 1) Bracket assembly is not mounted at the time of shipment, but rather packaged together with the regulator.

Note 2) Mounting threads pressure gauge: AR30-1/8; AR40 to 60-1/4.

Pressure gauge is not mounted at the time of shipment, but rather packaged together with the regulator.

Accessory/ Optional specification combinations

⊙: Combination available

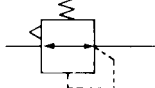
■: Combination not available

○: Varies depending on the model

△: Available only with NPT thread

Accessory/ Optional specifications	Combination	Symbol	Accessories				Optional specifications				Applicable regulators AR30 to 60
			B	E	G	P	1	N	R	Z	
Accessories	With bracket (with set nut)	B	■	○	⊙	■	⊙	⊙	⊙	△	⊙
	Square embedded type pressure gauge	E	⊙	■	■	⊙	⊙	⊙	⊙	△	⊙
	Round pressure gauge	G	⊙	■	■	⊙	⊙	⊙	⊙	△	⊙
	Panel mount (with set nut)	P	■	○	⊙	■	⊙	⊙	⊙	△	○
Optional specifications	0.02 to 0.2MPa setting	-1	⊙	○	⊙	⊙	■	⊙	⊙	△	⊙
	Non-relieving type	-N	⊙	○	⊙	⊙	⊙	■	⊙	△	⊙
	Flow direction: Right to left	-R	⊙	○	⊙	⊙	⊙	⊙	■	△	⊙
	Display units for product name plate and pressure gauge: PSI, °F.	-Z	△	△	△	△	△	△	△	■	△

JIS symbol



Standard specifications

Model	AR30	AR40	AR40-06	AR50	AR60
Port size	1/4, 3/8	1/4, 3/8, 1/2	3/4	3/4, 1	1
Fluid	Air				
Proof pressure	1.5MPa				
Maximum operating pressure	1.0MPa				
Regulating pressure range	0.05 to 0.85MPa				
Gauge port size Note 1)	1/8	1/4	1/4	1/4	1/4
Relief pressure	Set pressure + 0.05MPa (at relief flow rate of 0.1l/min(ANR))				
Ambient and fluid temperature	-5 to 60°C (With no condensation)				
Construction	Relieving type				1.22
Weight (kg)	0.29	0.44	0.47	1.17	

Note 1) The type with square embedded pressure gauge does not have connection threads.

Option/Part no.

Applicable model		AR30	AR40	AR40-06	AR50	AR60	
Option							
Bracket assembly Note 1)		AR30P-270AS	AR40P-270AS	AR40P-270AS	AR50P-270AS Note 4)	AR50P-270AS Note 4)	
Set nut		AR30P-260S	AR40P-260S	AR40P-260S	— Note 5)	— Note 5)	
Pressure gauge Note 2)	1MPa	Round	G36-10-□01	G46-10-□02	G46-10-□02	G46-10-□02	
		Square embedded type Note 3)	GC3-10AS	GC3-10AS	GC3-10AS	GC3-10AS	GC3-10AS
	0.2MPa	Round	G36-2-□01	G46-2-□02	G46-2-□02	G46-2-□02	G46-2-□02
		Square embedded type Note 3)	GC3-2AS	GC3-2AS	GC3-2AS	GC3-2AS	GC3-2AS

Note 1) Assembly includes a bracket and set nuts.

Note 2) □ in part numbers for a round pressure gauge indicates a type of connection threads. No indication is necessary for R; however, indicate and N for NPT. Contact SMC for regarding the connection thread NPT and pressure gauge supply for PSI unit specifications.

Note 3) Includes one O-ring and 2 mounting screws.

Note 4) Assembly includes a bracket and 2 mounting screws.

Note 5) Contact SMC regarding the set nuts for AR50 and AR60.

ORDER
ONLINE