

Clean Speed Controller  
with One-touch Fitting

# Series AS-FPQ/AS-FPG

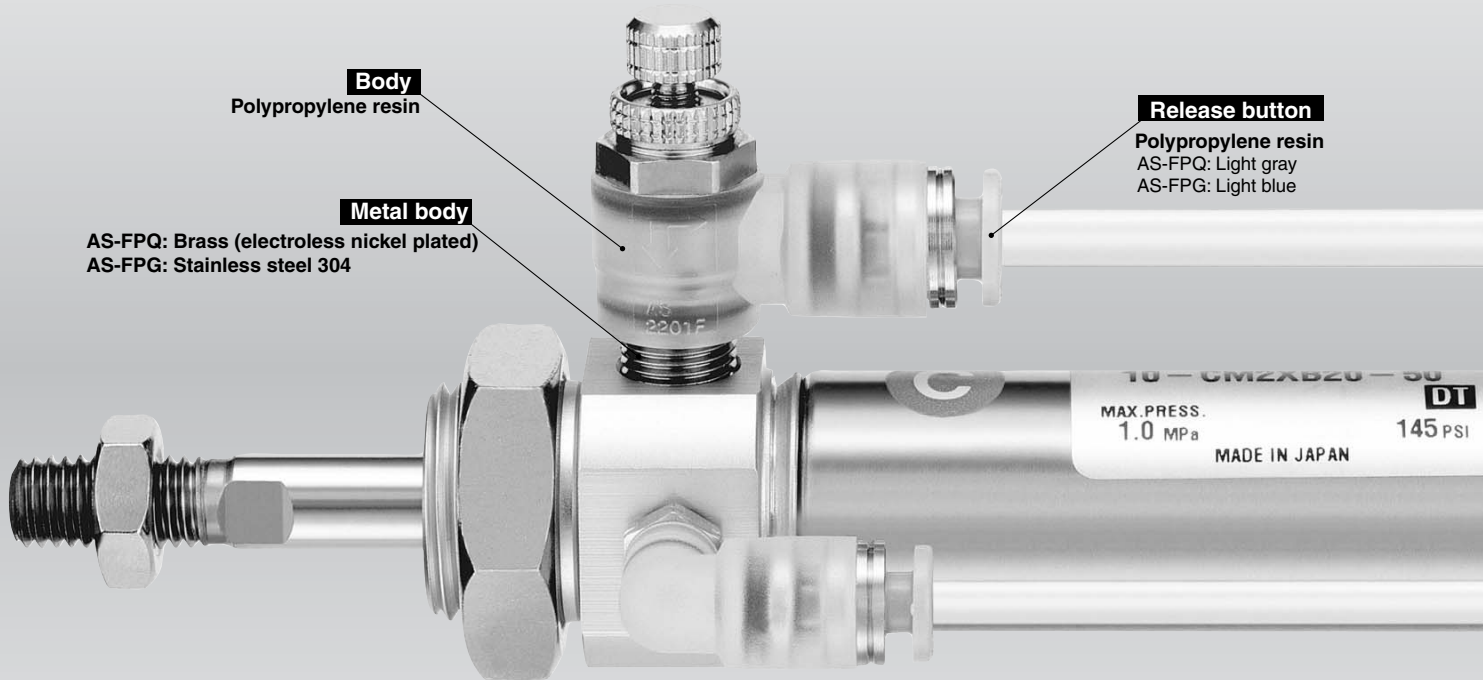


*Speed controllers  
for clean room use*

**AS-FPQ: Brass (electroless nickel plated) and  
AS-FPG: Stainless steel 304 are now available as a series.**

- AS
- ASP
- ASN
- AQ
- ASV
- AK
- ASS
- ASR
- ASF

# Low particulate generating speed controllers designed for use in clean rooms



Clean Speed Controller with One-touch Fitting

## Series AS-FPQ/FPG



**Series AS-FPQ**  
Brass (electroless nickel plated)



**Series AS-FPG**  
Stainless steel 304

Elbow type	Port size	Applicable tube O.D. (mm)					Applicable cylinder bore size (mm)
		4	6	8	10	12	
AS12□1FP□-M5	M5 x 0.8	●	●	●	●	●	6, 10, 16, 20
AS22□1FP□-01	R 1/8	●	●	●	●	●	20, 25, 32
AS22□1FP□-02	R 1/4	●	●	●	●	●	20, 25, 32, 40
AS32□1FP□-03	R 3/8	●	●	●	●	●	40, 50, 63
AS42□1FP□-04	R 1/2	●	●	●	●	●	63, 80, 100

Low particulate generation

Clean performance

AS-FPQ  
Resin: PP  
Metal: Brass (electroless nickel plated)

AS-FPG  
Resin: PP  
Metal: Stainless steel 304

10-AS-F  
Resin: PBT, POM  
Metal: Brass (electroless nickel plated)

10-AS-FG  
Resin: PBT, POM  
Metal: Stainless steel 303

Environmental resistance

Excellent

# Clean Speed Controller with One-touch Fitting

## Series AS-FPQ/FPG

### Elbow Type

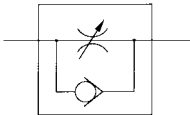
**AS-FPQ/Brass** (electroless nickel plated)  
Release button color: Light gray



**AS-FPG/Stainless steel 304**  
Release button color: Light blue



JIS symbol



Flow direction symbols on body

	Meter-out type	Meter-in type
Symbol		
JIS symbol		

### Model

Elbow type	Port size	Applicable tubing O.D. (mm)					Applicable cylinder bore size (mm)
		4	6	8	10	12	
AS12□1FP□-M5	M5 x 0.8	●	●				6, 10, 16, 20
AS22□1FP□-01	R 1/8	●	●	●			20, 25, 32
AS22□1FP□-02	R 1/4	●	●	●	●		20, 25, 32, 40
AS32□1FP□-03	R 3/8		●	●	●	●	40, 50, 63
AS42□1FP□-04	R 1/2				●	●	63, 80, 100

### Specifications

Particulate generation grade	Grade 1 Note 1)
Proof pressure	1.5MPa
Maximum operating pressure	1MPa
Minimum operating pressure	0.1MPa
Ambient and fluid temperature	-5 to 60°C (with no freezing)
Number of needle rotations	10 rotations (8 rotations Note 2))

Note 1) Refer to particulate generation grade classifications.  
Note 2) For AS12□1FP□

### Flow Rate and Effective Area

Model		AS12□1FP□-M5		AS22□1FP□-01		AS22□1FP□-02			AS32□1FP□-03		AS42□1FP□-04	
Tubing O.D.	Metric sizes	ø4	ø4	ø6	ø4	ø6	ø8	ø6	ø8	ø10	ø10	ø12
			ø6		ø8			ø10			ø12	
Controlled (free) flow	Flow rate l/min (ANR)	100	180	230	260	390	460	660	790	920	1580	1710
	Effective area mm <sup>2</sup>	1.5	2.7	3.5	4	6	7	10	12	14	24	26

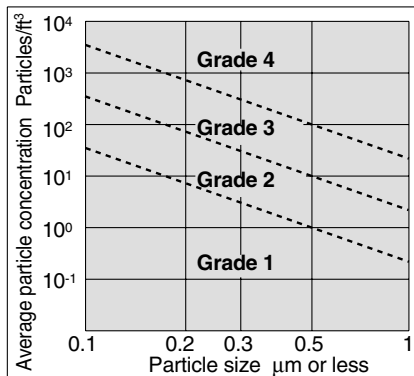
Note) Flow rate values are at a pressure of 0.5MPa, and temperature of 20°C.

### Recommended Applicable Tubing

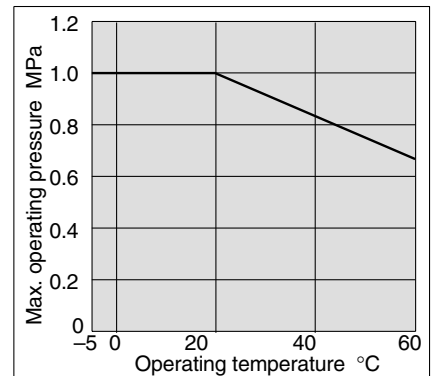
Tubing material	Clean series polyurethane tubing: Series 10
Tubing O.D.	ø4, ø6, ø8, ø10, ø12

Polyurethane tubing: Series TU, Nylon tubing: Series T and Soft nylon tubing: Series TS can also be used. However, the degree of clean performance will decline.

### Particulate Generation Grade Classifications



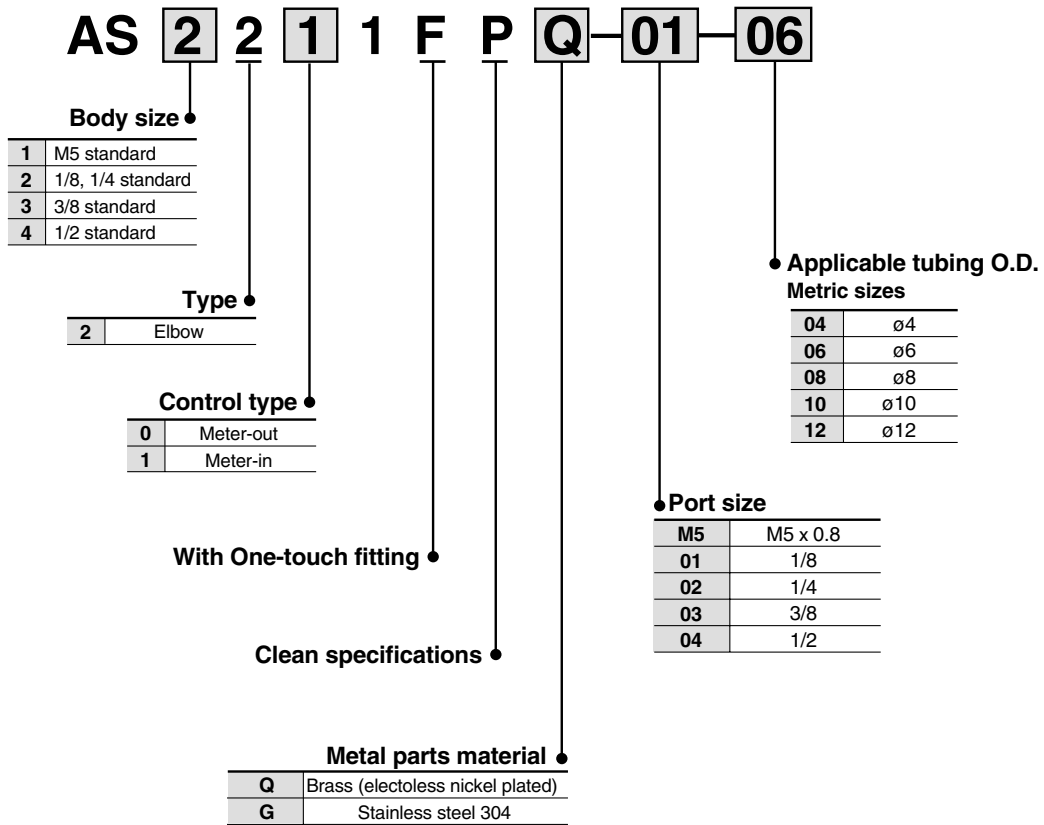
### Relation between Operating Temp. and Max. Operating Pressure



AS  
ASP  
ASN  
AQ  
ASV  
AK  
ASS  
ASR  
ASF

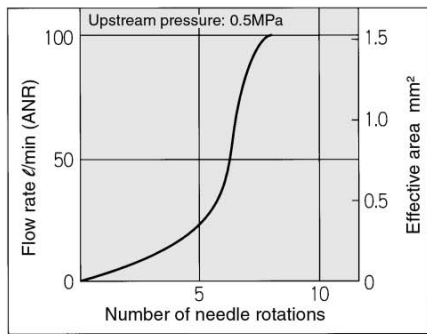
# Series AS-FPQ/FPG

## How to Order

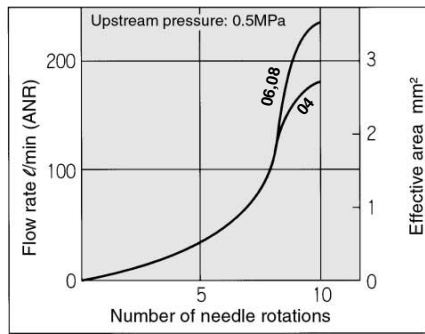


## Needle Valve/Flow Characteristics

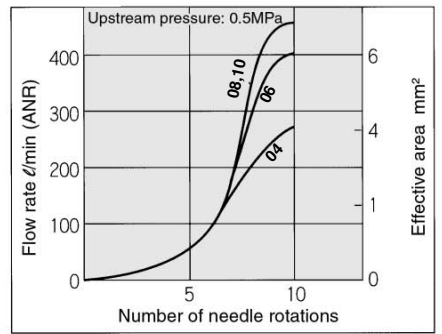
**AS12□1FP□-M5**



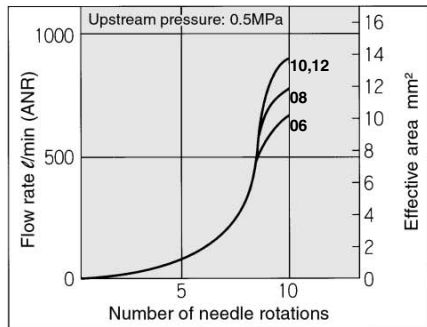
**AS22□1FP□-01**



**AS22□1FP□-02**



**AS32□1FP□-03**



**AS42□1FP□-04**

