

# Speed Controller with Residual Pressure Release Valve with One-touch Fitting

## Series AS□□□□FE

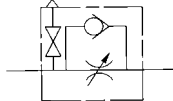
Elbow Type/Universal Type

Residual pressure can be easily released with one push of button.

Eye-catching red color release button.



JIS Symbol



Flow Direction Symbols on Body

	Meter-out type	Meter-in type
Symbol		
JIS Symbol		

### Model

Elbow type	Universal type	Port size in the cylinder side	Applicable tubing O.D. (mm)					Applicable cylinder bore size (mm)
			ø4	ø6	ø8	ø10	ø12	
AS22□1FE-01	AS23□1FE-01	R 1/8	●	●	●	● <sup>(1)</sup>		20, 25, 32
AS22□1FE-02	AS23□1FE-02	R 1/4	●	●	●	●		20, 25, 32, 40
AS32□1FE-03	AS33□1FE-03	R 3/8		●	●	●	●	40, 50, 63
AS42□1FE-04	AS43□1FE-04	R 1/2				●	●	63, 80, 100

Note 1) Elbow type only

Note 2) Distinction between meter-out/meter-in types by appearance

Those are distinguished by the lock nut. The meter-out type is electroless nickel plated, while the meter-in type is black zinc chromate plated.

### Specifications

Fluid	Air
Proof pressure	1.5 MPa
Max. operating pressure	1.0 MPa
Min. operating pressure	0.1 MPa
Ambient and fluid temperature	-5 to 60°C (No freezing)
Number of needle rotations	10 turns
Effective area of residual exhaust valve	0.8 mm <sup>2</sup>
Applicable tubing material	Nylon, Soft nylon, Polyurethane

### Flow Rate and Effective Area

Model		AS22□1FE-01 AS23□1FE-01		AS22□1FE-02 AS23□1FE-02			AS32□1FE AS33□1FE			AS42□1FE AS43□1FE	
Tubing O.D.	Metric size	ø4	ø6 ø8 ø10	ø4	ø6	ø8 ø10	ø6	ø8	ø10 ø12	ø10	ø12
Controlled flow (Free flow)	Flow rate (l/min (ANR))	180	230	260	390	460	660	790	920	1580	1710
	Effective area (mm <sup>2</sup> )	2.7	3.5	4	6	7	10	12	14	24	26

Note) Flow rate values are measured at 0.5 MPa and 20°C.

### How to Order

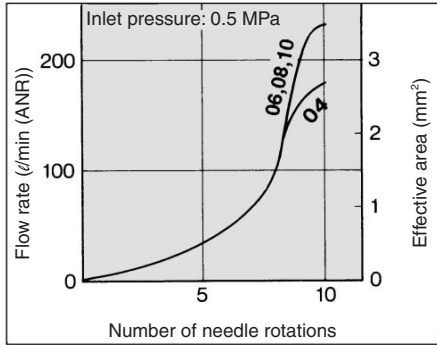
**AS 2 2 1 1 FE 01-06 S K**

- Body size**
  - 2 1/8, 1/4 standard
  - 3 3/8 standard
  - 4 1/2 standard
- Type**
  - 2 Elbow
  - 3 Universal
- Control type**
  - 0 Meter-out
  - 1 Meter-in
- Port size**
  - 01 R 1/8
  - 02 R 1/4
  - 03 R 3/8
  - 04 R 1/2
- Applicable tubing O.D. (mm)**
  - 04 ø4
  - 06 ø6
  - 08 ø8
  - 10 ø10
  - 12 ø12
- Hexagonal lock nut**
- With seal**
- With residual pressure release valve**
- With One-touch fitting**

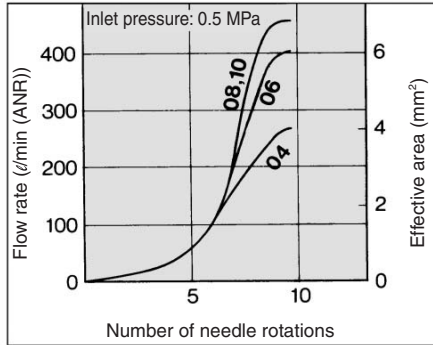
**Speed Controller with Residual Pressure Release Valve with One-touch Fitting, Elbow Type/Universal Type**

**Needle Valve/Flow Characteristics**

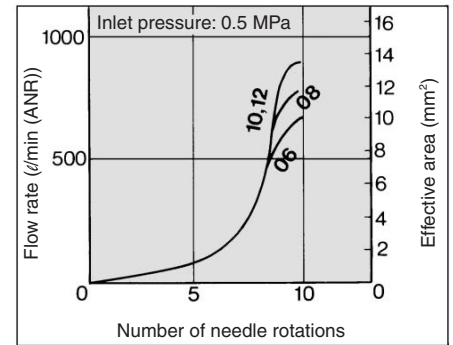
**AS2201FE-01, AS2211FE-01  
AS2301FE-01, AS2311FE-01**



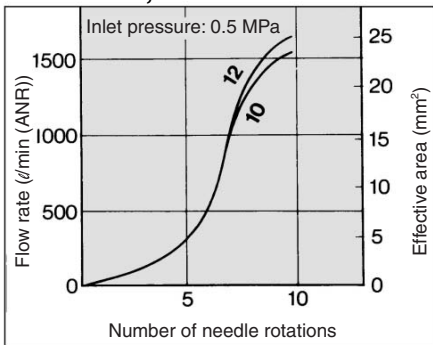
**AS2201FE-02, AS2211FE-02  
AS2301FE-02, AS2311FE-02**



**AS3201FE, AS3211FE  
AS3301FE, AS3311FE**



**AS4201FE, AS4211FE  
AS4301FE, AS4311FE**



**⚠ Caution**

Be sure to read before handling. Refer to pages 15-18-3 to 15-18-4 for Safety Instructions and Common Precautions on the products mentioned in this catalog, and refer to pages 15-8-6 to 15-8-8 for Precautions on every series.

- AS
- ASP
- ASN
- AQ
- ASV
- AK
- ASS
- ASR
- ASF