

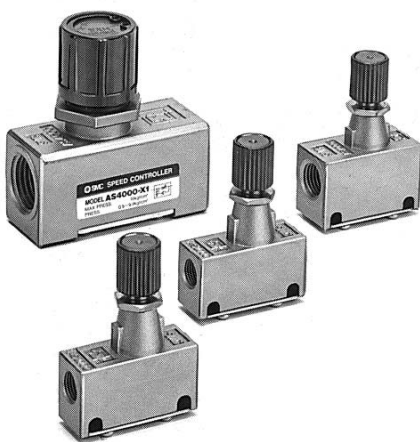
Speed Controller with Residual Pressure Release Valve: Standard Type

Series AS□□□□E

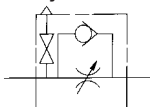
In-line Type (Metal Body)

Residual pressure can be easily released with one push of button.

Eye-catching red color release button.



JIS Symbol



Model/Flow Rate and Effective Area

Model	Port size	Free flow		Controlled flow		Applicable cylinder bore size (mm)	Weight (g)
		Flow rate (ℓ/min (ANR))	Flow rate (ℓ/min (ANR))	Effective area (mm ²)	Flow rate (ℓ/min (ANR))		
AS2000E-01	1/8	340	5.2	250	3.8	20, 25, 32, 40	90
AS2000E-02	1/4						115
AS3000E-02	1/4	810	12.3	810	12.3	32, 40, 50, 63	130
AS3000E-03	3/8						
AS4000E-02	1/4	1670	25.5	1670	25.5	40, 50, 63, 80, 100	225
AS4000E-03	3/8						
AS4000E-04	1/2						

Note) Flow rate values are measured at 0.5 MPa and 20°C.

Specifications

Fluid	Air
Proof pressure	1.5 MPa
Max. operating pressure	1.0 MPa
Min. operating pressure	0.05 MPa
Ambient and fluid temperature	-5 to 60°C (No freezing)
Number of needle rotations	8 turns
Effective area of residual exhaust valve	0.8 mm ²

How to Order

AS 2 000 E — □ — 01

Body size

2	1/8, 1/4 standard
3	3/8 standard
4	1/2 standard

With residual pressure release valve

Thread type

Nil	Rc
N	NPT
F	G

Port size

Port size	Applicable series
01	1/8 AS2000E
02	1/4 AS2000E/3000E/4000E
03	3/8 AS3000E/4000E
04	1/2 AS4000E

⚠ Caution

Be sure to read before handling. Refer to pages 15-18-3 to 15-18-4 for Safety Instructions and Common Precautions on the products mentioned in this catalog, and refer to pages 15-8-6 to 15-8-8 for Precautions on every series.