

e-Actuator**P** NEW PRODUCTS
REVIEW

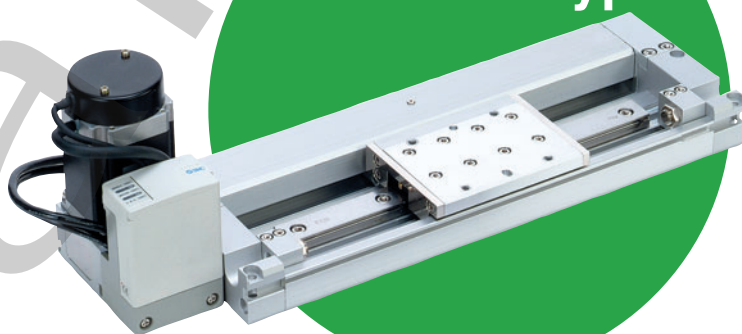
e-Rodless Actuator

Remote type controller is added to the e-rodless actuator with no programming required.

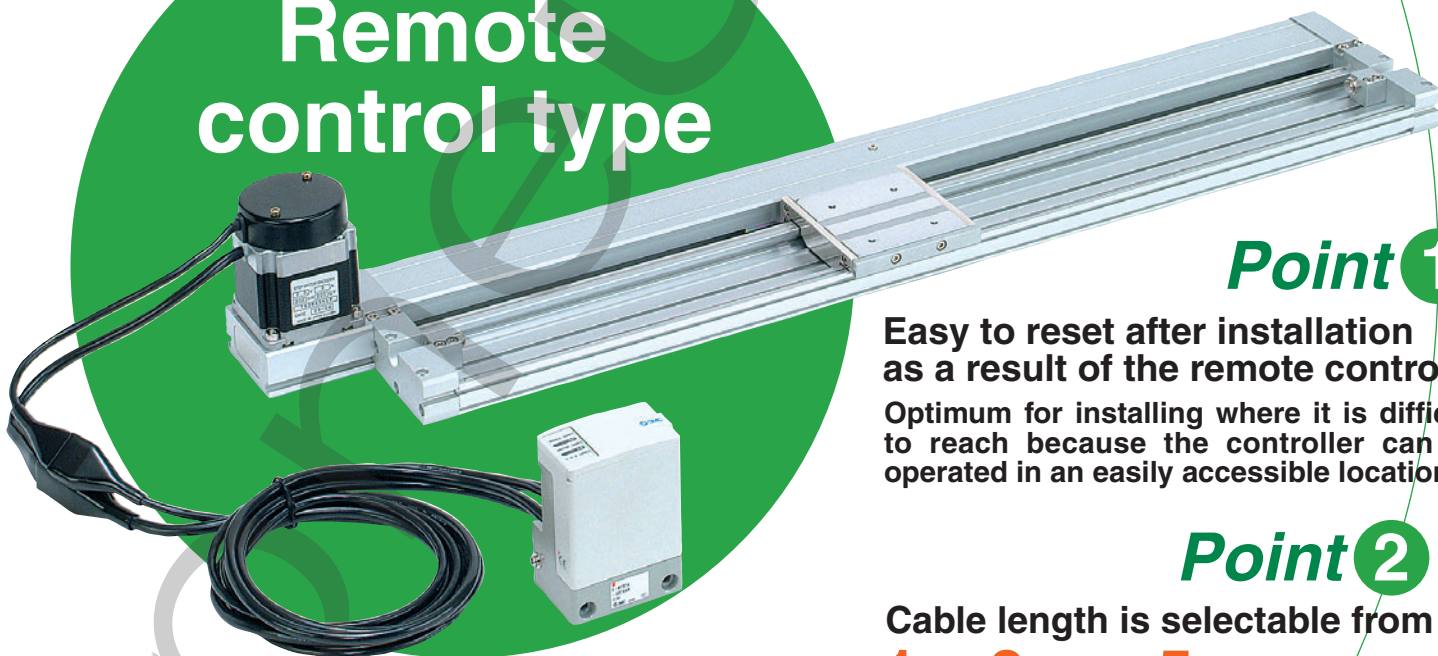
Automatic operation

Can be operated with the same signals as those used for solenoid valves (with PLC).

Integrated controller type



New Remote control type



Point 1

Easy to reset after installation as a result of the remote controller
Optimum for installing where it is difficult to reach because the controller can be operated in an easily accessible location.

Point 2

Cable length is selectable from **1 m**, **3 m** and **5 m**

Point 3

Improvement in the maximum operating temperature from 40°C to **50°C**
(Actuator portion only)

Series E-MY2C/2H

Mounting Method is Selectable among 3 Types.

Direct Mount

Easy to mount on a profile.



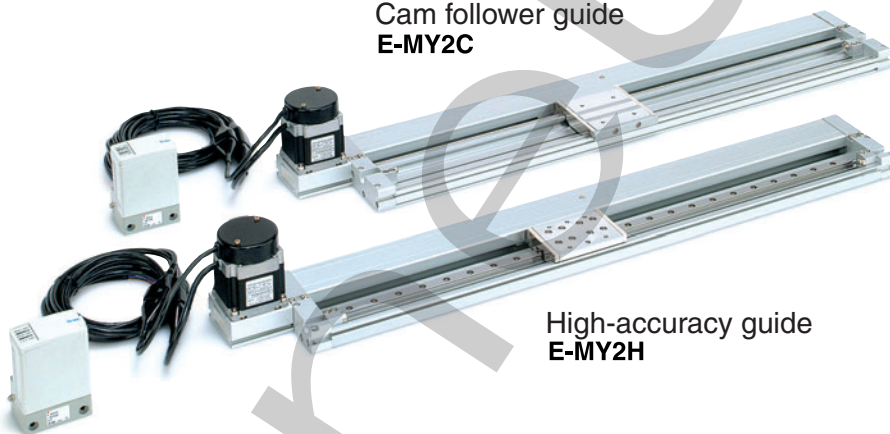
DIN Rail Mount

Able to collectively install controllers. Easy to install on the control box, etc.



Variations

Cam follower guide
E-MY2C



Bracket Mount



Series	E-MY2C		E-MY2H	
Guide type	Cam follower guide		High-accuracy guide	
Nominal size	16	25	16	25
Payload kg	5	10	5	10
Stroke mm	50 to 1000 (Available in 1 mm increments.)			