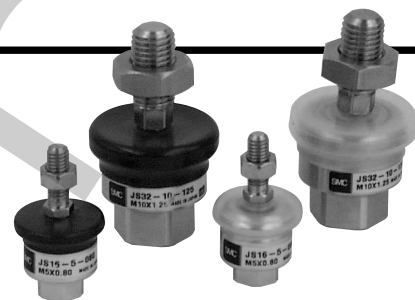
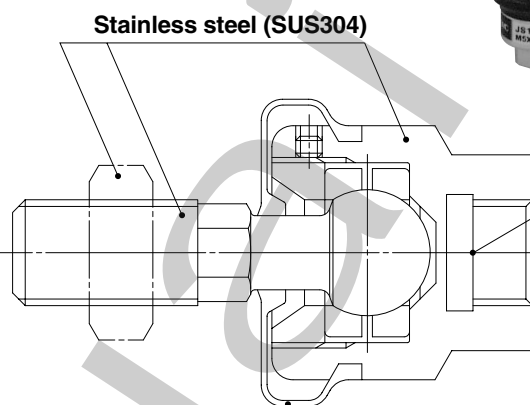
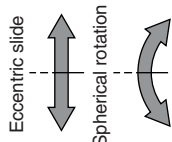
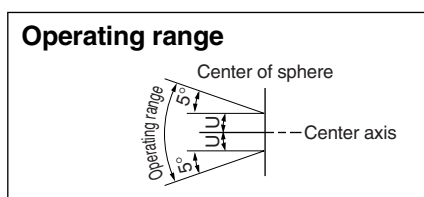


Information

Floating Joint/Stainless Steel Type Series JS

Stainless steel used to increase corrosion resistance



Cylinder connection threads
Water, etc., cannot enter the interior from the thread area.

Dust cover (fluoro rubber, silicon rubber)

- Cover shaped to prevent residual liquid
- Sealing improved

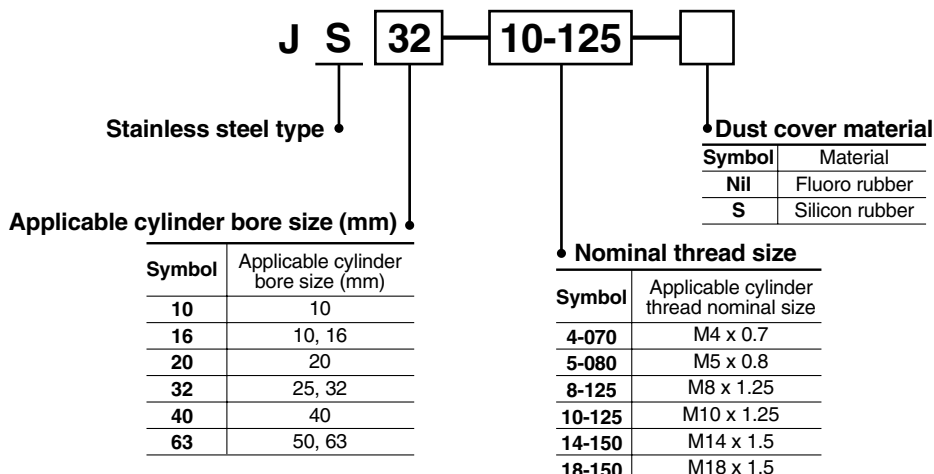
Overall length as well as maximum tension and compression are the same as standard (series JA)

Models/Specifications

Model	Applicable cylinder bore size (mm) Note 1)	Applicable cylinder thread nominal size	Maximum tension and compression N	Allowable eccentricity U (mm)	Operating pressure		Ambient temperature
					Air cylinder	Hydraulic cylinder	
JS10-4-070	10	M4 x 0.7	80	0.5	1MPa or less	—	-5 to 60°C
JS16-5-080	10, 16	M5 x 0.8	210	0.5			
JS20-8-125	20	M8 x 1.25	1100	0.5			
JS32-10-125	25, 32	M10 x 1.25	2500	0.5			
JS40-14-150	40	M14 x 1.5	6000	0.75			
JS63-18-150	50, 63	M18 x 1.5	11000	1			

Note 1) Use the applicable cylinder bore size as a guide. For further details, confirm the rod end thread diameter in the catalog of the cylinder being used.
Note 2) For a hydraulic cylinder at 3.5MPa, operate within the maximum tension and compression.

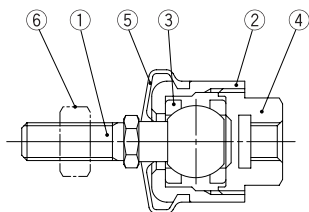
How to Order



Series JS

Construction

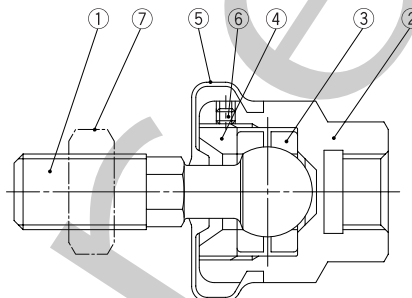
ø10, ø16



Parts list

No.	Description	Material	Note
1	Stud	Stainless steel	
2	Case	Stainless steel	
3	Ring	Stainless steel	
4	Socket	Stainless steel	
5	Dust cover	Fluoro rubber/Silicon rubber	
6	Rod end nut	Stainless steel	

ø20 to ø63



Parts list

No.	Description	Material	Note
1	Stud	Stainless steel (threads)	Electroless nickel plated
2	Case	Stainless steel	
3	Ring	Chrome molybdenum steel	Electroless nickel plated
4	Cap	Carbon steel	Electroless nickel plated
5	Dust cover	Fluoro rubber/Silicon rubber	
6	Set screw	Carbon steel	
7	Rod end nut	Stainless steel	

Replacement Parts

Dust cover

If the dust cover is damaged or deteriorates, order a replacement with the part numbers below.

Model	Dust cover part no.	
	Fluoro rubber	Silicon rubber
JS10	P21530511	P21530512
JS16	P21530521	P21530522
JS20	P2153151	P2153152
JS32	P2153251	P2153252
JS40	P2153351	P2153352
JS63	P2153451	P2153452

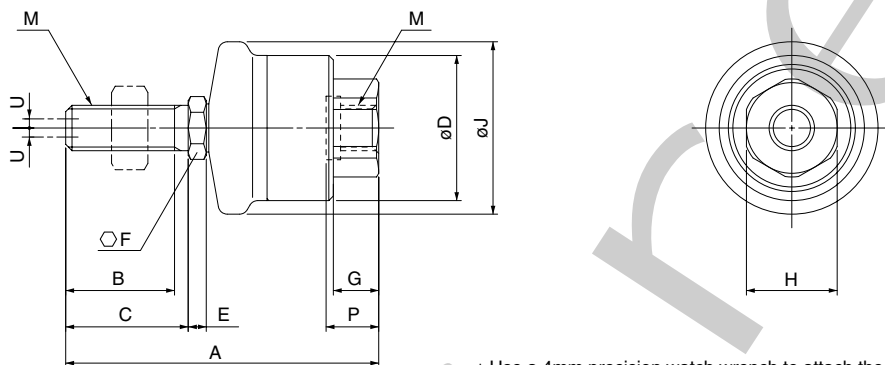
Rod end nut

If a JS series rod end nut is needed order as shown below. See page 3 for details.

Example: Nut for JS40

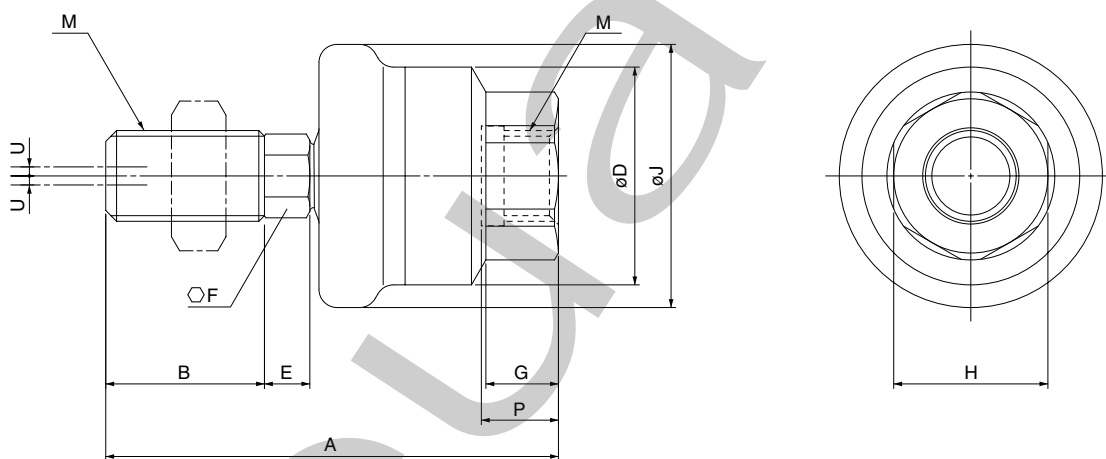
Dimensions

JS10, 16

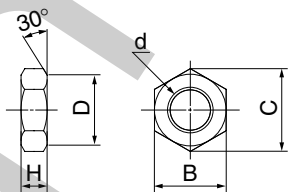


* Use a 4mm precision watch wrench to attach the JS10 male threads.

JS20, 32, 40, 63



Rod end nut



Description	d: Nominal thread size	H	B	C	D
Nut for JS10	M4 x 0.7	3.2	7	8.1	6.8
Nut for JS16	M5 x 0.8	4	8	9.2	7.8
Nut for JS20	M8 x 1.25	5	13	15	12.5
Nut for JS32	M10 x 1.25	6	17	19.6	16.5
Nut for JS40	M14 x 1.5	8	22	25.4	21
Nut for JS63	M18 x 1.5	11	27	31.2	26

Model	M	A	B	C	D	E	F	G	H	J	Max. screw-in depth P	Allowable eccentricity U	Max. tension and compression N
JS10-4-070	M4 x 0.7	26	8.5	9.5	12	1.5	4	4	7	14.4	4.7	0.5	80
JS16-5-080	M5 x 0.8	34.5	12	13.5	16	2	6	5	10	19	5.8	0.5	210
JS20-8-125	M8 x 1.25	44	15.5	—	21	4.5	7	7.8	13	24.8	7.3	0.5	1100
JS32-10-125	M10 x 1.25	49.5	17.5	—	24	5	8	8.5	17	29	8.5	0.5	2500
JS40-14-150	M14 x 1.5	60	18.5	—	31	5	11	11.6	22	38.4	11.6	0.75	6000
JS63-18-150	M18 x 1.5	74.5	23	—	41	7	14	14.3	27	49.2	14.3	1	11000