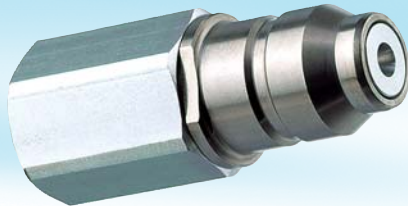


S Couplers

Stainless Steel



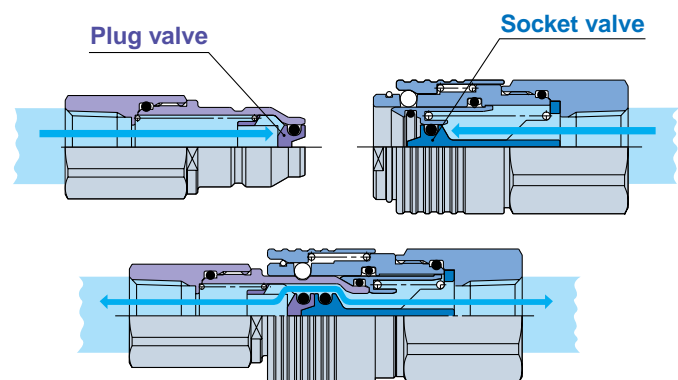
Both the plug and socket have an integral check valve. Minimizes liquid dripping when uncoupled.

Liquid dripping **0.02~0.06 cm³/time**

Aeration **0.1~0.2 cm³/time**

Body size	Liquid dripping	Aeration
KKA3	0.02	0.1
KKA4	0.04	0.1
KKA6	0.06	0.2

Liquid dripping : Leakage of internal liquid at the time of uncoupling
Aeration : The amount of entrained air at the time of connection



●Material : Metal parts 304 stainless steel, Seals FKM

●Operating temperature range: -5 to 100°C

Note: Do not use S coupler with steam.

●Non-greased specification

O-ring: Fluorine coating
Sliding parts of plug and socket: Plated with containing fluorine, allowing smooth installation and removal, even without grease



●Fluid : Water, Air

●Available with and without check valves.

	Plug	Socket	Availability
Built-in check valve	Yes	Yes	○
	No	Yes	○
	No	No	○
	Yes	No	×



Plug (P)

Built-in check valve / Male thread

Body size	Port size	Part No.
1 / 8	R1 / 8	KKA3 P-01 M
	R1 / 4	KKA3 P-02M
	R3 / 8	KKA3 P-03 M
1 / 4	R1 / 4	KKA4 P-02M
	R3 / 8	KKA4 P-03 M
	R1 / 2	KKA4 P-04 M
1 / 2	R3 / 8	KKA6P-03 M
	R1 / 2	KKA6P-04 M
	R3 / 4	KKA6P-06M



Socket (S)

Built-in check valve / Male thread

Body size	Port size	Part No.
1 / 8	R1 / 8	KKA3 S-01 M
	R1 / 4	KKA3 S-02M
	R3 / 8	KKA3 S-03 M
1 / 4	R1 / 4	KKA4 S-02M
	R3 / 8	KKA4 S-03 M
	R1 / 2	KKA4 S-04 M
1 / 2	R3 / 8	KKA6S-03 M
	R1 / 2	KKA6S-04 M
	R3 / 4	KKA6S-06M



Built-in check valve / Female thread

Body size	Port size	Part No.
1 / 8	Rc1 / 8	KKA3 P-01 F
	Rc1 / 4	KKA3 P-02F
	Rc3 / 8	KKA3 P-03 F
1 / 4	Rc1 / 4	KKA4 P-02F
	Rc3 / 8	KKA4 P-03 F
	Rc1 / 2	KKA4 P-04 F
1 / 2	Rc3 / 8	KKA6P-03 F
	Rc1 / 2	KKA6P-04 F
	Rc3 / 4	KKA6P-06F



Built-in check valve / Female thread

Body size	Port size	Part No.
1 / 8	Rc1 / 8	KKA3 S-01 F
	Rc1 / 4	KKA3 S-02F
	Rc3 / 8	KKA3 S-03 F
1 / 4	Rc1 / 4	KKA4 S-02F
	Rc3 / 8	KKA4 S-03 F
	Rc1 / 2	KKA4 S-04 F
1 / 2	Rc3 / 8	KKA6S-03 F
	Rc1 / 2	KKA6S-04 F
	Rc3 / 4	KKA6S-06F



Without check valve / Male thread

Body size	Port size	Part No.
1 / 8	R1 / 8	KKA3 P-01 M-1
	R1 / 4	KKA3 P-02M-1
	R3 / 8	KKA3 P-03 M-1
1 / 4	R1 / 4	KKA4 P-02M-1
	R3 / 8	KKA4 P-03 M-1
	R1 / 2	KKA4 P-04 M-1
1 / 2	R3 / 8	KKA6P-03 M-1
	R1 / 2	KKA6P-04 M-1
	R3 / 4	KKA6P-06M-1



Without check valve / Male thread

Body size	Port size	Part No.
1 / 8	R1 / 8	KKA3 S-01 M-1
	R1 / 4	KKA3 S-02M-1
	R3 / 8	KKA3 S-03 M-1
1 / 4	R1 / 4	KKA4 S-02M-1
	R3 / 8	KKA4 S-03 M-1
	R1 / 2	KKA4 S-04 M-1
1 / 2	R3 / 8	KKA6S-03 M-1
	R1 / 2	KKA6S-04 M-1
	R3 / 4	KKA6S-06M-1



Without check valve / Female thread

Body size	Port size	Part No.
1 / 8	Rc1 / 8	KKA3 P-01 F-1
	Rc1 / 4	KKA3 P-02F-1
	Rc3 / 8	KKA3 P-03 F-1
1 / 4	Rc1 / 4	KKA4 P-02F-1
	Rc3 / 8	KKA4 P-03 F-1
	Rc1 / 2	KKA4 P-04 F-1
1 / 2	Rc3 / 8	KKA6P-03 F-1
	Rc1 / 2	KKA6P-04 F-1
	Rc3 / 4	KKA6P-06F-1



Without check valve / Female thread

Body size	Port size	Part No.
1 / 8	Rc1 / 8	KKA3 S-01 F-1
	Rc1 / 4	KKA3 S-02F-1
	Rc3 / 8	KKA3 S-03 F-1
1 / 4	Rc1 / 4	KKA4 S-02F-1
	Rc3 / 8	KKA4 S-03 F-1
	Rc1 / 2	KKA4 S-04 F-1
1 / 2	Rc3 / 8	KKA6S-03 F-1
	Rc1 / 2	KKA6S-04 F-1
	Rc3 / 4	KKA6S-06F-1

