

Related Products: Holder

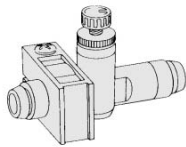
Series *TMH*

A holder for securing a speed controller (In-line type) with One-touch fitting.

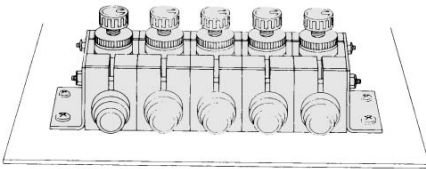
Universal mounting



The holder can be used to secure an individual part.

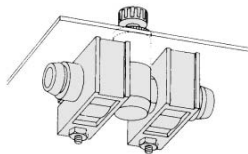


Adaptable for the manifold application. Note)



Note) Mounting bracket is not available.
This is an application example.

Can be mounted on the panel.



Specifications

Ambient temperature	-20 to 60°C
Material	Polypropylene
Color	White

Accessory: Round head Phillips screw for mounting (Black zinc chromated).

Model

Model		Size (Nominal x Height)	Piece
Metric size	Inch size		
TMH-23J	TMH-01J	M3 x 15	1
TMH-04J	TMH-03J		
TMH-06J	TMH-05	M3 x 20	
TMH-06	TMH-07		
TMH-08	TMH-09	M4 x 25	
TMH-10	TMH-11		
TMH-12	TMH-13	M4 x 35	

Correspondence of In-line Speed Controller and Holder

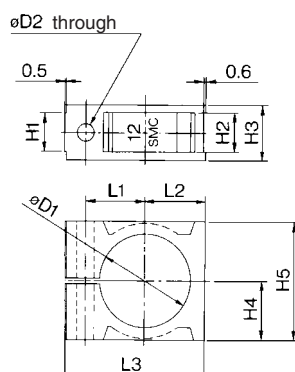
Metric Size

Applicable tubing size	Applicable tubing					
	23 ø3.2	04 ø4	06 ø6	08 ø8	10 ø10	12 ø12
Body size	AS1001F	AS2001F	AS2051F	AS3001F	AS4001F	
	TMH-23J	TMH-04J	TMH-06J	TMH-06	TMH-08	TMH-10 TMH-12

Inch Size

Applicable tubing size	Applicable tubing						
	01 ø1/8"	03 ø5/32"	05 ø3/16"	07 ø1/4"	09 ø5/16"	11 ø3/8"	13 ø1/2"
Body size	AS1001F	AS2001F	AS2051F	AS3001F	AS4001F		
	TMH-01J	TMH-03J	TMH-05	TMH-07	TMH-09	TMH-11	TMH-13

Dimensions



Model		øD1	øD2	H1	H2	H3	H4	H5	L1	L2	L3	Symbol
Metric size	Inch size											
TMH-23J	TMH-01J	8.4	3.3	4.5	4.6	7.5	6	12	7.2	6.6	18	1/8J
TMH-04J	TMH-03J	9.3										1/32J
—	TMH-05	11.7	3.3	6.3	6.4	9.3	7.7	15.4	8.5	8.3	21	3/16
TMH-06J	—	11.6										6
TMH-06	—	13.1	4.3	7.1	7.2	11	10	20	11	10.6	26.5	1/4
—	TMH-07	13.5										8
TMH-08	TMH-09	15.5	4.3	9.5	9.6	14	14	28	14.2	14.6	34	5/16
TMH-10	—	18.8										10
—	TMH-11	18.2	4.3	9.5	9.6	14	14	28	14.2	14.6	34	3/8
TMH-12	—	21.2										12
—	TMH-13	22										1/2