

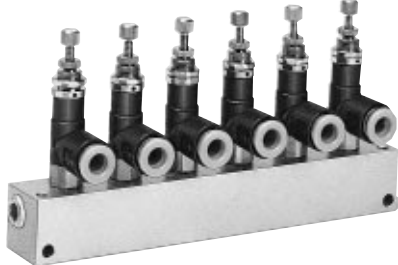
Miniature Regulator

ARJ1020F

**Compact and lightweight
(16g)
Low cracking pressure
0.02MPa
Standard model equipped
with backflow function**

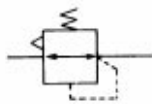


ARJ1020F-M5-04 ARJ1020F-M5-06



ARJM10-6

JIS symbol



Standard Specifications

Model		ARJ1020F	
Port size	IN side	M5 (Male thread)	
	OUT side (Applicable tube O.D.)	ø4	ø6
Fluid		Air	
Proof pressure		1.2MPa	
Max. operating temperature		0.8MPa	
Set pressure range		0.1 to 0.7MPa	
Ambient and fluid temperature		-5 to 60° (Non-freezing)	
Construction		Relieving style	
Weight (kg)		0.015	0.016
Cracking pressure (Valve)		0.02MPa	
Applicable tube material ⁽¹⁾		Nylon, Soft nylon, Polyurethane	

Note 1) Be sure to recognize the maximum operating pressure for soft nylon and polyurethane.
(Refer to p.2.0-0 of fittings and tubing.)

Accessory (Option) Part No.

Description	Part No.
Manifold base	ARJM10-4, -6, -10

How to Order

ARJ 10 20 F — M5 — 04 — 1

Miniature regulator

Body size
10 M5

Port size
M5 M5 X 0.8

With One-touch fitting

Piping
20 Elbow style

Option

1 Set at 0.2MPa

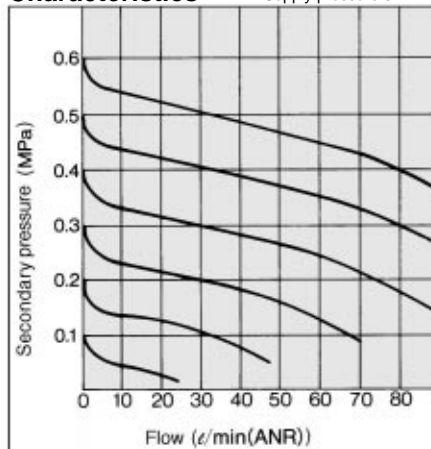
*Only the adjusting spring is different from standard.

Applicable tube O.D.

04 4mm
06 6mm

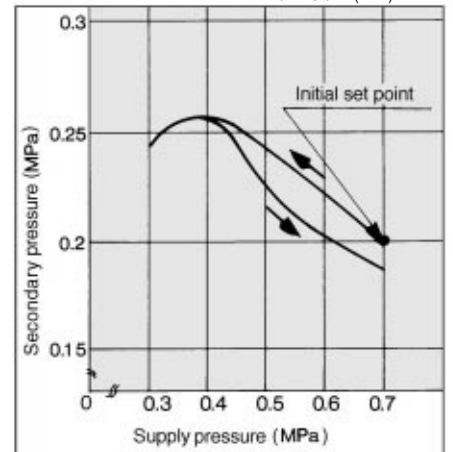
Flow Characteristics

Supply pressure 0.7MPa

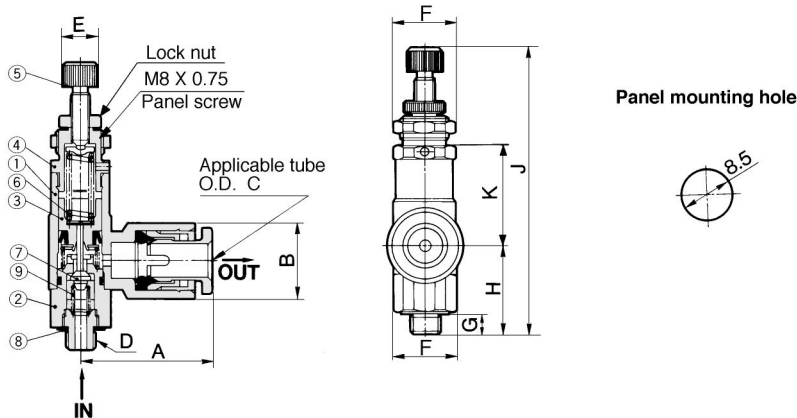


Pressure Characteristics

Initial setting: Supply pressure: 0.7MPa
Secondary pressure: 0.2MPa
Flow: 10 l/min(ANR)



Construction/Dimensions



Component Parts

No.	Description	Material	Note
①	Body	PBT	
②	Valve guide	Brass	Electroless nickel plated
③	Piston	Polyacetal	
④	Bonnet	Brass	Electroless nickel plated
⑤	Handle	Brass	Electroless nickel plated
⑥	Adjusting spring	Steel wire	Zinc chromated
⑦	Valve	Brass	Rubber lining

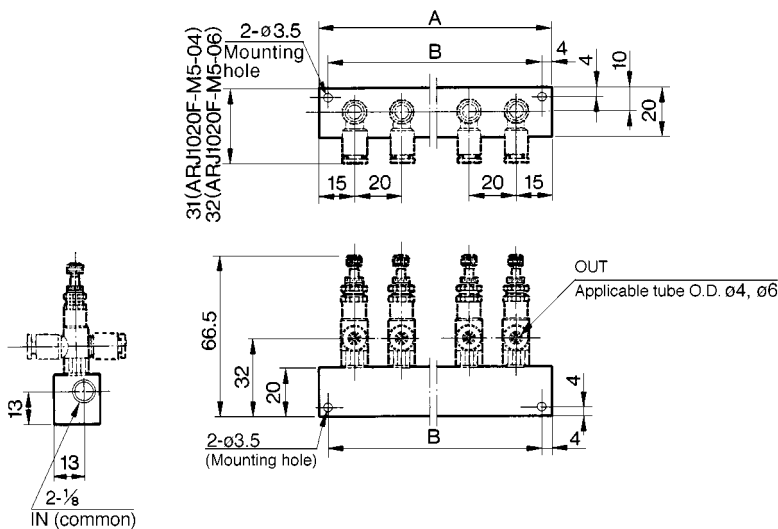
Replacement Parts

No.	Description	Material	Part no.
⑦	Valve	Brass/NBR	13434
⑧	Gasket	Stainless steel/ NBR	P233014-04
⑨	Spring	Stainless steel	134313

Dimensions

Model	A	B	C	D	E	F	G	H	J	K
ARJ1020F-M5-04	21	10.4	4	M5 X 0.8	6	10.6 (Width across flats: 10)	3.5	15.5	50	17.2
ARJ1020F-M5-06	22	12.8	6							

Manifold Base (Option)/Dimensions



Manifold base part No.	Stations	A dimension	B dimension
ARJM10-4	4	90	82
ARJM10-6	6	130	122
ARJM10-10	10	210	202

⚠ Precautions

Be sure to read before handling. Refer to p.0-26 and 0-27 for Safety Instructions and common precautions on the products mentioned in this catalog, and refer to p.1.0-1 and 1.0-2 for precautions on every series.

Piping

⚠ Warning

- ① To connect the IN side, hold the valve guide at its wrench flats (opposite side 10) and tighten it at the recommended torque of 1.5 to 2Nm. Excessive torque or holding it at an area other than the specified area could lead to equipment damage.
- ② When connecting piping to the product or operating the handle, make sure that no bending moment is applied to the product in order to prevent damage.

Mounting/Adjustment

⚠ Warning

- ① Set up the regulator while verifying the pressure that is indicated on the primary and the secondary pressure gauges. Turning the handle excessively could damage the internal parts.

⚠ Caution

- ① Release the lock to adjust the pressure. After the adjustment, engage the lock. Failure to observe this procedure could damage the handle or cause the secondary pressure to fluctuate.
(Lock operating method)
Loosen the lock nut to unlock it, and tighten it to lock it.

AC

AV

AU

AF

AR

IR

VEX

AW

AMR

AWM

AWD

ITV

VBA

VE

VY

G

AL