

Multi-connector Series *DM*

The use of the multi-connector enables panel mount connections with other apparatus and can provide the reliability of one-touch installation and removal of multi-tubes (nylon, polyurethane). As a result, separate transportation of panel and machinery equipment and backup unit exchange are made possible.

One-touch installation and removal

Employs the unique built-in keying mechanism which provides one-touch installation and removal capability even in hard to see locations. In addition, it prevents installation mistakes when re-connecting.

Installation processes are reduced considerably

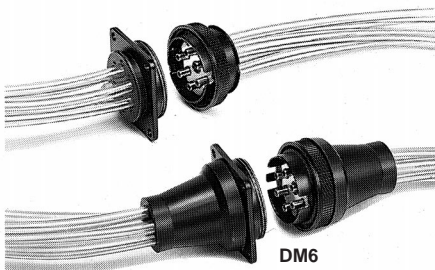
As compared with the use of many bulkhead unions, this installation is very easy and installation time is reduced considerably.

Reliable tube retaining force

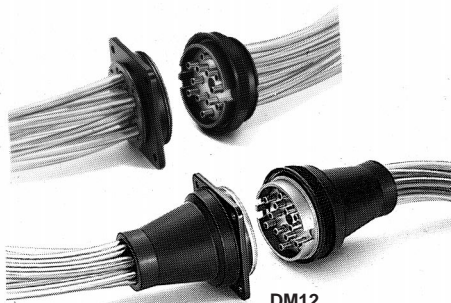
This construction mechanism enables clamping and unclamping every tube in use by one operation and can provide a reliable tube retaining force.

Number of connecting tubes

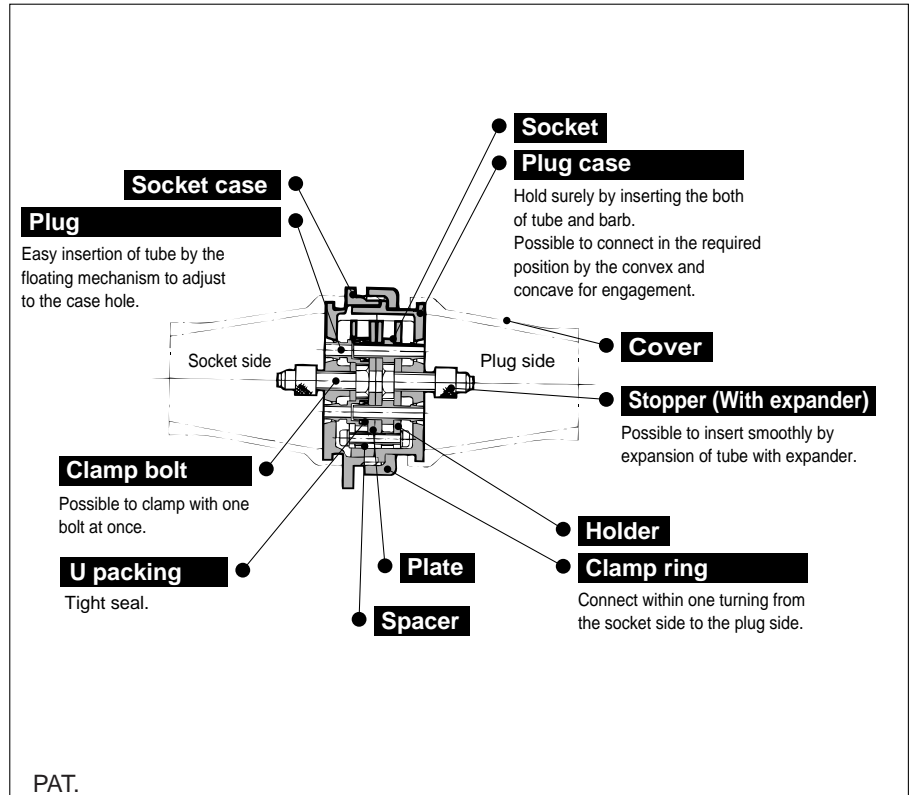
2 styles - 6 tubes & 12 tubes.



DM6



DM12



Model

No. of connecting tubes	Part No.			Applicable tubing			Accessories (optional)
	Multiconnector	Plug side only	Socket side only	Nylon	Soft nylon	Polyurethane	
6	DM6-04N	DM6P-04N	DM6S-04N	T0425	—	—	DM-C-6
	DM6-04NU	DM6P-04NU	DM6S-04NU	T0403	TS0425	TU0425	
	DM6-06N	DM6P-06N	DM6S-06N	T0604	—	—	
	DM6-06NU	DM6P-06NU	DM6S-06NU	T0645	TS0604	TU0604	
12	DM12-04N	DM12P-04N	DM12S-04N	T0425	—	—	DM-C-12
	DM12-04NU	DM12P-04NU	DM12S-04NU	T0403	TS0425	TU0425	
	DM12-06N	DM12P-06N	DM12S-06N	T0604	—	—	
	DM12-06NU	DM12P-06NU	DM12S-06NU	T0645	TS0604	TU0604	

Specifications

Operating fluid	Air
Max. operating pressure	1.0MPa
Ambient and fluid temperature	-5 to 60°C (No freezing)

Component Materials

Socket case, Plug case, Clamp ring	ADC12 Black anodized
Plate	SPCC, Chromated
Holder	SPCC, Zinc chromated
Socket, Plug, Stopper	C3604BD
U packing	NBR
Cover	CR
Cross recessed head screw, Clamp bolt	SWRM Zinc chromated
Spacer	SPC Zinc chromated