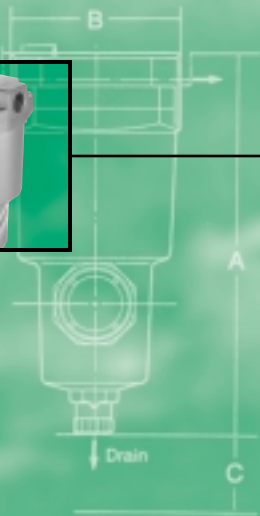


Pneumatic Purification

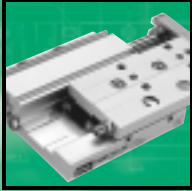


Filtration

 **PureAir Solutions**

By  **SMC**

Product Information



Cylinders and Actuators

SMC's Cylinders and Actuators offer some of the most innovative designs in the pneumatic industry. they are available in a wide variety of styles, including compact, guided and rodless cylinders as well as rotary actuators and grippers. All are created to provide you with an array of solutions to help meet your design needs, such as a wide range of bore sizes stroke lengths, high precision performance, exceptional reliability, global availability and auto switch capability.



Directional Control Valves

SMC's Valve series offers industry leading valve performance advancements such as remarkably high flow capacities from very compact designs, low power consumption, high speed response, long life, built-in surge suppression and indicator lights. Manifold options, including built-in "One-Touch" fittings, prewired electric connections and serial interface simplify installation, maintenance and control.



Air Preparation Products

SMC's Air Preparation products line offers a wide variety of filter, regulator and lubricator combination units as well as ambient dryers, booster regulators, mist separators and a wide range of accessories.



Vacuum Products

SMC's vacuum Products offer the variety and innovation necessary to satisfy your needs. Our vacuum generators pack several optional features - such as "One-Touch" fittings, filters, switches and exhaust mufflers - into small, lightweight packages designed for maximum flexibility, including point-of-use mounting. Most options are modular allowing you to add only those that are relevant to your application.



Fittings, Tubing and Flow Controls

SMC's Fittings, Tubing and Flow Controls simplify your pneumatic components. Both the fittings and flow controls utilize SMC's innovative "One-Touch" or "Uni-Thread" technology which offers unsurpassed simplicity in fitting and connector installation, reducing time, tools and hardware. We offer many variations and sizes to suit any application. Tubing is made in several sizes and roll lengths to ensure the right fit for your needs.



Instrumentation

SMC's Instrumentation products are designed as feedback devices in a pneumatic or vacuum system. they include pressure and vacuum switches, as well as flow switches and proportional pressure regulators - all of which are easy to read, control and set up. As with other SMC products, there are many options available to suit your specific applications.

Main Line Filter : Series AFF

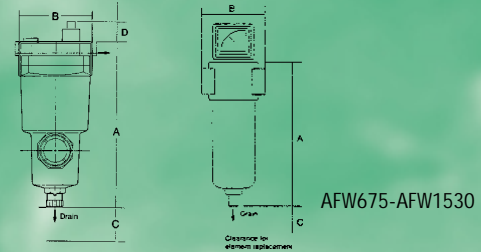


MODEL	FLOW	PORT NPT	A in	B in	C in	D in	WEIGHT lb	ELEMENT
	(cfm)							
AFF2B-N02C-T	10	1/4"	6.26	2.48	0.39	1.46	0.84	AFF-EL2B
AFF4B-N03C-T	26	3/8"	6.78	2.99	0.39	1.46	1.21	AFF-EL4B
AFF8B-N04C-T	53	1/2"	8.04	3.55	0.39	1.46	1.98	AFF-EL8B
AFF11B-N06C-T	73	3/4"	8.87	4.18	0.39	1.46	3.09	AFF-EL11B
AFF22B-N10C-T	123	1"	10.2	4.8	0.39	1.46	4.63	AFF-EL22B
AFF37B-N14D-T	212	1 1/2"	14.22	6.3	0.39	1.46	9.26	AFF-EL37B
AFF75B-N20D-T	424	2"	18.64	8.67	0.39	1.46	23.15	AFF-EL75B
AFW675-N20-E1	675	2"	18.64	8.67	0.39	2.56	11.02	E1702-E1
AFW954-N25-E1	954	2 1/2"	18.64	8.67	0.39	2.56	25.35	E3127-E1
AFW1300-N30-E1	1300	3"	18.64	8.67	0.39	2.56	34.17	E3783-E1
AFW1530-N30-E1	1530	3"	18.64	8.67	0.39	2.56	41.89	E3843-E1

Filter Performance (ISO8573.1) • Particle Size CL.3 • Oil Content CL.4
Flow @ 0.7MPa (100 PSI) & 20°C

Standard features

- Die-cast Aluminum with chromate treatment
- No screw threads or tie rods are required therefore removal and replacement of element is made quick and easy (AFF)
- Differential Pressure indicator
- Internal autodrain
- Built-in push-to-connect fitting on drain (AFF)



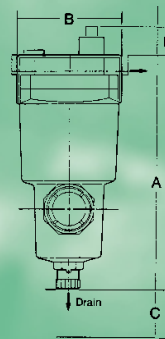
Series AFF Mainline Filters will remove oil, water and dirt from compressed air. The AFF may be located in the compressed air main and can be used as a 3 micron protection filter (AFW 1.0 Micron) for a refrigerated air dryer or prefilter to the high efficiency filters, Series AM, AMD or AMH.

Mist Separator : Series AM



MODEL	FLOW	PORT NPT	A in	B in	C in	D in	WEIGHT lb	ELEMENT
	(cfm)							
AM150-N02C-T	10	1/4"	6.26	2.48	0.39	1.46	0.84	AM-EL150
AM250-N03C-T	26	3/8"	6.78	2.99	0.39	1.46	1.21	AM-EL250
AM350-N04C-T	53	1/2"	8.04	3.55	0.39	1.46	1.98	AM-EL350
AM450-N06C-T	73	3/4"	8.87	4.18	0.39	1.46	3.09	AM-EL450
AM550-N10C-T	123	1"	10.2	4.81	0.39	1.46	4.63	AM-EL550
AM650-N14D-T	212	1 1/2"	14.22	6.3	0.39	1.46	23.15	AM-EL650
AM850-N20D-T	424	2"	18.64	8.67	0.39	1.46	23.15	AM-EL850

Filter Performance (ISO8573.1) • Particle Size CL.1 • Oil Content CL.2
Flow @ 0.7MPa (100 PSI)



Standard features on all models

- Die-cast Aluminum with chromate treatment
- No screw threads or tie rods are required therefore removal and replacement of element is made quick and easy
- Differential Pressure indicator
- Internal autodrain
- Built-in push-to-connect fitting on drain

Series AM Micro Mist Separator will remove oil, water and dirt from compressed air and is well suited for oil filtration following a piston compressor. Series AM filters will remove 0.3 micron or larger with an oil carry over 0.8ppm or less.

Micro Mist Separator : Series AMD

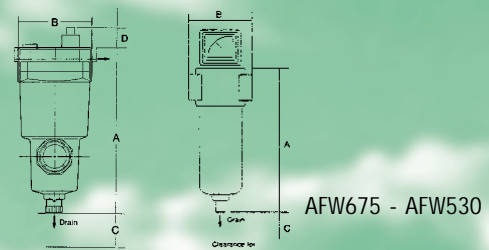


MODEL	FLOW	PORT NPT	A in	B in	C in	D in	WEIGHT lb	ELEMENT
	(cfm)							
AMD150-N02C-T	7	1/4"	6.26	2.48	0.39	1.46	0.84	AMD-EL150
AMD250-N03C-T	17	3/8"	6.78	2.99	0.39	1.46	1.21	AMD-EL250
AMD350-N04C-T	35	1/2"	8.04	3.55	0.39	1.46	1.98	AMD-EL350
AMD450-N06C-T	70	3/4"	8.87	4.18	0.39	1.46	3.09	AMD-EL450
AMD550-N10C-T	123	1"	10.2	4.81	0.39	1.46	4.63	AMD-EL550
AMD650-N14D-T	212	1 1/2"	14.22	6.3	0.39	1.46	23.15	AMD-EL650
AMD850-N20D-T	424	2"	18.64	8.67	0.39	1.46	23.15	AMD-EL850
AFW675-N20-EA	954	2"	29.16	7.88	0.39	2.56	25.35	E1702-EA
AFW954-N25-EA	1300	2 1/2"	33.88	7.88	0.39	2.56	34.17	E3127-EA
AFW1300-N30-EA	1530	3"	38.81	9.06	0.39	2.56	41.89	E3783-EA
AFW1530-N30-EA	1530	3"	38.81	9.06	0.39	2.56	41.89	E3843-EA

Filter Performance (ISO8573.1) • Particle Size CL.1 • Oil Content CL.1
Flow @ 0.7MPa (100 PSI)

Standard features

- Die-cast Aluminum with chromate treatment
- No screw threads or tie rods are required therefore removal and replacement of element is made quick and easy (AMD)
- Differential Pressure indicator
- Internal autodrain
- Built-in push-to-connect fitting on drain (AMD)



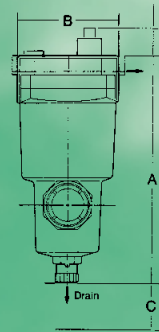
Series AMD Micro Mist Separator will remove particles, liquid and oil aerosols of more than 0.01 microns. They are high efficiency filters used for very good quality compressed air. They can be used in conjunction with the Series AMF activated carbon odour removal filters. They should always be preceded by AM series.

Micro Mist Separator : Series AMH



MODEL	FLOW	PORT	A	B	C	D	WEIGHT	ELEMENT
	(cfm)	NPT	in	in	in	in		
AMH150-N02C-T	7	1/4"	6.26	2.48	0.39	1.46	0.84	AMH-EL150
AMH250-N03C-T	17	3/8"	6.78	2.99	0.39	1.46	1.21	AMH-EL250
AMH350-N04C-T	35	1/2"	8.04	3.55	0.39	1.46	1.98	AMH-EL350
AMH450-N06C-T	70	3/4"	8.87	4.18	0.39	1.46	3.09	AMH-EL450
AMH550-N10C-T	123	1"	10.2	4.81	0.39	1.46	4.63	AMH-EL550
AMH650-N14D-T	212	1 1/2"	14.22	6.3	0.39	1.46	23.15	AMH-EL650
AMH850-N20D-T	424	2"	18.64	8.67	0.39	1.46	23.15	AMH-EL850

Filter Performance (ISO8573.1) • Particle Size CL.1 • Oil Content CL.1
Flow @ 0.7MPa (100 PSI)



Standard features

- Die-cast Aluminum with chromate treatment
- No screw threads or tie rods are required therefore removal and replacement of element is made quick and easy (AMH)
- Differential Pressure indicator
- Internal autodrain
- Built-in push-to-connect fitting on drain

Series AMH Micro Mist Separator provides the performance of a high quality 0.01 micron oil removal coalescing filter with a built in prefilter. The AMH eliminates the prefilter for multi filter installations reducing element replacement, space & reduced total pressure drop.

Odour Removal Filter : Series AMF



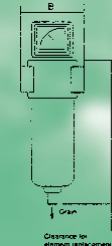
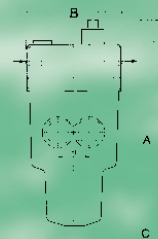
MODEL	FLOW	PORT	A	B	C	D	WEIGHT	ELEMENT
	(cfm)	NPT	in	in	in	in		
AMF150-N02-T	7	1/4"	6.26	2.48	0.39	1.46	0.84	AMF-EL150
AMF250-N03-T	17	3/8"	6.78	2.99	0.39	1.46	1.21	AMF-EL250
AMF350-N04-T	35	1/2"	8.04	3.55	0.39	1.46	1.98	AMF-EL350
AMF450-N06-T	70	3/4"	8.87	4.18	0.39	1.46	3.09	AMF-EL450
AMF550-N10-T	123	1"	10.2	4.81	0.39	1.46	4.63	AMF-EL550
AMF650-N14-T	212	1 1/2"	14.22	6.3	0.39	1.46	23.15	AMF-EL650
AMF850-N20-T	424	2"	18.64	8.67	0.39	1.46	23.15	AMF-EL850
AFW675-N20-EC	675	2"	26.79	5.32	25.81	2.56	11.02	E1702-EC
AFW954-N25-EC	954	2 1/2"	29.16	7.88	27.46	2.56	25.35	E3127-EC
AFW1300-N30-EC	1300	3"	33.88	7.88	27.46	2.56	34.17	E3783-EC
AFW1530-N30-EC	1530	3"	38.81	9.06	37.23	2.56	41.89	E3843-EC

Filter Performance (ISO8573.1) • Particle Size CL.1 • Oil Content CL.1
Flow @ 0.7MPa (100 PSI) & 20°C

Warning: Will not remove carbon monoxide nor carbon dioxide

Standard features

- Die-cast Aluminum with chromate treatment
- No screw threads or tie rods are required therefore removal and replacement of element is made quick and easy (AMF)
- Two sight glasses are fitted to the housing to give a visual indication of the filter operation and condition (AMF)



AFW675-AFW1530

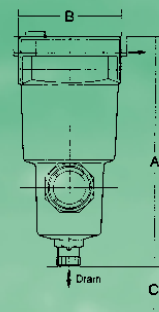
Series AMF Odour Removal Filters is a high efficiency, large filtration area, multi-layered, activated carbon filter used to remove hydrocarbon and organic vapors from compressed air. It is used after the Series AMD or AMH micro mist separator for process air.



Water Separator : Series AMG

MODEL	FLOW	PORT	A	B	C	D	WEIGHT	ELEMENT
	(cfm)	NPT	in	in	in	in		
AMG150-N02C	7	1/4"	6.26	2.48	0.39	1.46	0.84	AMG-EL150
AMG250-N03C	17	3/8"	6.78	2.99	0.39	1.46	1.21	AMG-EL250
AMG350-N04C	35	1/2"	8.04	3.55	0.39	1.46	1.98	AMG-EL350
AMG450-N06C	70	3/4"	8.87	4.18	0.39	1.46	3.09	AMG-EL450
AMG550-N10C	123	1"	10.2	4.81	0.39	1.46	4.63	AMG-EL550
AMG650-N14D	212	1 1/2"	14.22	6.3	0.39	1.46	23.15	AMG-EL650
AMG850-N20D	424	2"	18.64	8.67	0.39	1.46	23.15	AMG-EL850

Flow @ 0.7MPa (100 PSI)



Standard features

- Port Sizes 1/4, 3/8, 1/2, 3/4, 1, 1 1/2, 2
- Removes 99.9% of Water Droplets
- Automatic Drain as Standard
- Element is resistant to clogging
- Built-in push to connect fitting on drain

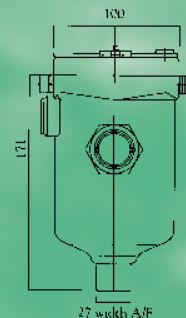
Series AMG Water Separator will remove 99.9% of all liquid water and mist that is present in air line where an AMG is installed. AMG should be installed at the highest pressure and as far away as possible from the compressor. Particle and oil filter, plus pressure regulation if required, should be installed downstream of AMG. The element design produces negligible pressure drop.

Note: AMG does not remove water vapour & air leaving AMG is 100% saturated. Where dehumidified air (ie. RH<100%) is required an SMC dryer is recommended.



Heavy Duty Auto Drain Model ADH 4000-N04

- Minimum operating pressure 8psi.
- Maximum operating pressure 145psi.
- Maximum discharge 400cc/operation. Suitable for refrigerated dryers, air receivers and after coolers which produce large amounts of condensate.
- There is no influence of back pressure, therefore can be used in centralized piping and long drain piping system.
- Push button is provided on top of drain for easy operation.
- 1/2" NPT side entry.



Auto Drain - Float Type

Model NAD402-N04 (N04 = 1/2 NPT)

- Minimum operating pressure 22psi.
- Maximum operating pressure 145psi.
- Available N02 (1/4 NPT), N03 (3/8 NPT) and N04 (1/2 NPT)
- Metal bowl available as option (-2)



Model NAD600-N10

- Minimum operating pressure 45psi.
- Maximum operating pressure 145psi.
- 1" NPT top entry. (N10), 3/4 NPT (N06)



Series SL Slimline Auto Drain and Filterstop

- LED indicators show operational status
- Test button for maintenance check
- UL and CSA approved

SPECIFICATIONS

Timer	Solid-state construction
Status Indication	Power 'ON' / Valve 'OPEN'
Interval Time	0.5 to 45 minutes (as required)
Discharge Time	0.5 to 10 seconds (as required)
Electrical Connection	DIN 46242

PART NUMBER	DESCRIPTION
SL-W	Timer, cord, filterstop, 3/8 valve 24 to 240 VAC/DC
SL-WVX1/2	As above, but with SMC 1/2" NPT VXD valve and no filterstop 110 VAC*
SL-WVX3/4	As above, but with 3/4" NPT VXD valve and no filterstop 110 VAC*
SL-WVX1	As above, but with 1" NPT VXD valve and no filterstop 110 VAC*
FS	Filterstop only
MK111	Timer and Cord for SL
MK12	Timer for filters 0-120 minutes, fixed discharge 2 seconds

* other voltages available

Air Quality Class Recommendations for Typical Applications

APPLICATIONS	SUGGESTED QUALITY CLASSES			ADDITIONAL REQUIREMENTS
	Solids	Water	Oil	
Air Bearings, Turbines, Gauging	2	2	3	
Food & Beverage, Pharmaceuticals	1	3/2	1	Odor Removal
Instrumentation	1	3/2	2	
Abrasive Blasting	-	3	3	
Spray Painting	1	4/3	3	
Automation / Robotics	3	4/3	3	
Basic Air Cylinders	3	4/5	4	
Outdoor Pipelines	1	2/3	1	
Packaging Machines	3	4/5	3	
Hand Air Tools	3	4/6	4	

ISO 8573.1 Filtration Classes

CLASS	PARTICLE Max Size µ micron	WATER	OIL
		Max Pressure Dew Point °C	Max Oil Content Mg/M ³
1	0.1	-70	0.01
2	1	-40	0.1
3	5	-20	1.0
4	15	+3	5
5	40	+7	25
6	-	+10	-

'A' Series Compressed Air Filters

The selection of an air filter should be based on a desired result. One should determine the air quality one requires and then purchase filters that will provide it.

Every application for compressed air has a corresponding air quality. Manufacturers of modern machinery and processes regularly specify a minimum air quality standard for their equipment. In many cases, the successful and reliable operation of plant is dependent on that specified air quality.

Compressed air purification can be defined as making air suitable for its application and the filters used should deliver that quality in the most cost effective way with the lowest possible pressure drop.

SMC Worldwide Locations

CANADA

SMC Pneumatics (Canada) Ltd.
Manufacturing, Sales & Distribution Center
6768 Financial Drive
Mississauga, ON L5N 7J6
Tel: (905) 812 0400
Fax: (905) 812 8686

SMC Kingston

593 Norris Court
Kingston, ON K7P 2R9
Tel: (613) 389 6553
Fax: (613) 389 6815

SMC Montreal

8495 Dalton Drive
Township of Mount-Royal, PQ H4T 1V5
Tel: (514) 733 9595
Fax: (514) 733 1771

SMC Quebec

3260 Rue Watt - Local 112
Ste-Foy, PQ G1X 4T5
Tel: (418) 654 1997
Fax: (418) 654 1998

SMC Vancouver

Annacis Business Park
730 Eaton Way - Unit 2
Delta, BC V3M 6J9
Tel: (604) 517 1646
Fax: (604) 517-1647

SMC Windsor

2870 Jefferson Blvd - Unit 1
Windsor, ON N8T 3L2
Tel: (519) 944 0555
Fax: (519) 944 1870

MEXICO

SMC Corporation (Mexico) SA de CV

Mariano Escobedo 74 Tlalnepantla
Edo de Mexico 54030 Mexico
Tel: (5) 565 2320
Fax: (5) 565 2503

USA

For a US branch office near you, call 1-800-SMC-SMC1 (762-7621)

SMC Pneumatics Inc. (Agoura Hills)

30497 Canwood Street - Suite 101
Agoura Hills, CA 91301
Tel: (818) 865 8740 Fax: (818) 865 8742

SMC Pneumatics Inc. (Atlanta)

1440 Lakes Parkway - Suite 600
Lawrenceville, GA 30043
Tel: (770) 624 1940 Fax: (770) 624 1943

SMC Pneumatics Inc. (Austin)

2324-D Ridgepoint Drive
Austin, TX 78754
Tel: (512) 926 2646 Fax: (512) 926 7055

SMC Pneumatics Inc. (Binghamton)

27 Link Drive
Binghamton, NY 13904
Tel: (607) 773-1300 Fax: (607) 773 8008

SMC Pneumatics Inc. (Boston)

Zero Centennial Drive
Peabody, MA 01960
Tel: (978) 326 3600 Fax: (978) 326 3700

SMC Pneumatics Inc. (Charlotte)

5029-B West WT Harris Blvd
Charlotte, NC 28269
Tel: (704) 597 9292 Fax: (704) 596 9561

SMC Pneumatics Inc. (Chicago)

27725 Diehl Road
Waukegan, IL 60055
Tel: (630) 393 0080 Fax: (630) 393 0084

SMC Pneumatics Inc. (Cincinnati)

4598 Olympic Boulevard
Erlanger, KY 41018
Tel: (606) 647 5600 Fax: (606) 647 5609

SMC Pneumatics Inc. (Cleveland)

2305 East Aurora Road
Twinsburg, OH 44087
Tel: (330) 963 2727 Fax: (330) 963 2730

SMC Pneumatics Inc. (Columbus)

3687 Corporate Drive
Columbus, OH 43231
Tel: (614) 895 9765 Fax: (614) 895 9780

SMC Pneumatics Inc. (Dallas)

12801 N Stemmons Freeway - Suite 815
Dallas, TX 75234
Tel: (972) 406 0082 Fax: (972) 406 9904

SMC Pneumatics Inc. (Denver)

4910 Fox Street - Unit C
Denver, CO 80216
Tel: (303) 293 9322 Fax: (303) 293 9376

SMC Pneumatics Inc. (Detroit)

2990 Technology Drive
Rochester Hills, MI 48309
Tel: (248) 299 0202 Fax: (248) 293 3333

SMC Pneumatics Inc. (Houston)

9001 Jameel - Suite 180
Houston, TX 77040
Tel: (713) 460 0762 Fax: (713) 460 1510

SMC Pneumatics Inc. (Indianapolis)

3011 N Franklin Road
Indianapolis, IN 46226
Tel: (317) 899 4440 Fax: (317) 898 4808

SMC Pneumatics Inc. (Los Angeles)

14191 Myford Road
Tustin, CA 92780
Tel: (714) 669-1701 Fax: (714) 669 1715

SMC Pneumatics Inc. (Milwaukee)

16850 W Victor Road
New Berlin, WI 53151
Tel: (414) 827 0080 Fax: (414) 827 0092

SMC Pneumatics Inc. (Minneapolis)

990 Lone Oak Road - Suite 162
Eagan, MN 55121
Tel: (651) 688 3490 Fax: (651) 688 9013

SMC Pneumatics Inc. (Nashville)

5000 Linbar Drive - Suite 297
Nashville, TN 37211
Tel: (615) 331 0020 Fax: (615) 331 9950

SMC Pneumatics Inc. (New Jersey)

3434 US Highway 22 West - Suite 110
Somerville, NJ 08876
Tel: (908) 253 3241 Fax: (908) 253 3452

SMC Pneumatics Inc. (Phoenix)

2001 W Melinda Lane
Phoenix, AZ 85027
Tel: (602) 492 0908 Fax: (602) 492 9493

SMC Pneumatics Inc. (Portland)

14107 NE Airport Way
Portland, OR 97230
Tel: (503) 252 9299 Fax: (503) 252 9253

SMC Pneumatics Inc. (Richmond)

5377 Glen Alden Drive
Richmond, VA 23231
Tel: (804) 222 2762 Fax: (804) 222 5221

SMC Pneumatics Inc. (Rochester)

245 Summit Point Drive
Henrietta, NY 14467
Tel: (716) 321 1300 Fax: (716) 321 1865

SMC Pneumatics Inc. (San Diego)

13771 Danielson St. Suite D
Poway, CA 92064
Tel: (858) 679-1903 Fax: (858) 679 1904

SMC Pneumatics Inc. (San Francisco)

85 Nicholson Lane
San Jose, CA 95134
Tel: (408) 943 9600 Fax: (408) 943 9111

SMC Pneumatics Inc. (Seattle)

6627 S 191st Place - Suite F102
Kent, WA 98032
Tel: (206) 251 6955 Fax: (206) 251 6801

SMC Pneumatics Inc. (St Louis)

4130 Rider Trail North
Earth City, MO 63045
Tel: (314) 209 0080 Fax: (314) 209 0085

SMC Pneumatics Inc. (Tampa)

8507-H Benjamin Road
Tampa, FL 33634
Tel: (813) 243 8350 Fax: (813) 243 8621

SMC Pneumatics Inc. (Tulsa)

10203 A East 61st Street
Tulsa, OK 74146
Tel: (918) 252 7820 Fax: (918) 252 9511

EUROPE

AUSTRIA

SMC Pneumatik GmbH

ENGLAND

SMC Pneumatics (UK) Ltd.

GERMANY

SMC Pneumatik GmbH

IRELAND

SMC Pneumatics (Ireland) Ltd.

ITALY

SMC Italia SpA

FRANCE

SMC Pneumatique SA

THE NETHERLANDS / BELGIUM

SMC Controls BV

ROMANIA

SMC Romania Srl

SPAIN / PORTUGAL

SMC España, SA

SWEDEN

SMC Pneumatics Sweden AB

SWITZERLAND

SMC Pneumatik AG

ASIA

CHINA

SMC (China) Co Ltd.

HONG KONG

SMC Pneumatics (Hong Kong) Ltd.

INDIA

SMC Pneumatics (India) Pvt Ltd.

JAPAN

SMC Corporation

SOUTH KOREA

SMC Pneumatics Korea Co Ltd.

MALAYSIA

SMC Pneumatics (SEA) Sdn Bhd

PHILIPPINES

SMC Pneumatics (Philippines) Inc.

SINGAPORE

SMC Pneumatics (SEA) Pte Ltd.

TAIWAN

SMC Pneumatics (Taiwan) Co Ltd.

THAILAND

SMC Thailand Ltd.

SOUTH AMERICA

ARGENTINA

SMC Argentina SA

BOLIVIA

SMC Pneumatics Bolivia Srl

CHILE

SMC Pneumatics (Chile) Ltda.

VENEZUELA

SMC Neumatica Venezuela SA

OCEANIA

AUSTRALIA

SMC Pneumatics (Australia) Pty Ltd.

NEW ZEALAND

SMC Pneumatics (NZ) Ltd.

 **PureAir Solutions**

By  **SMC**