

Vacuum Pad: Large Size Bellows Type *Series ZPT/ZPX*

Pad Diameter: $\phi 40$, $\phi 50$, $\phi 63$, $\phi 80$, $\phi 100$, $\phi 125$

**Ideal for loads with a curved surface,
heavyweight loads and
loads with large surface area.**



ZX

ZR

ZM

ZH

ZU

ZL

ZY

ZQ

ZF

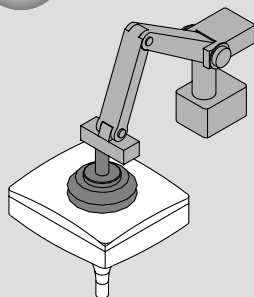
ZP

ZCU

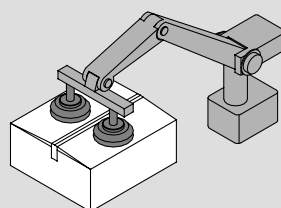
AMJ

Misc.

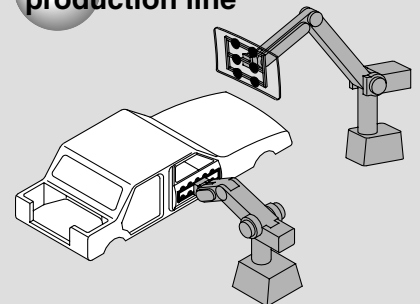
For transfer of CRT



For transfer of
cardboard box



For automotive
production line

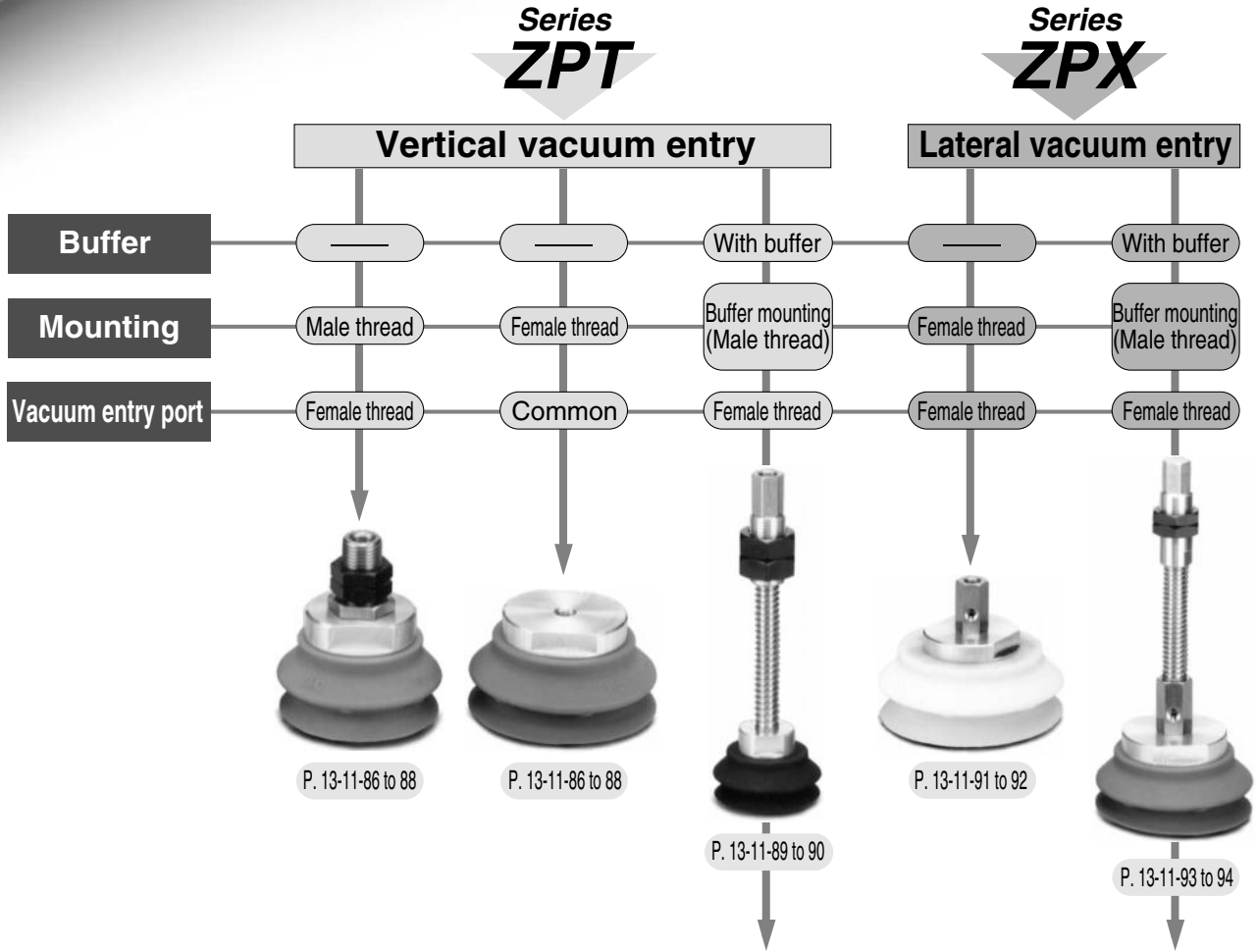


Vacuum Pad: Large Size Bellows Type

Series ZPT/ZPX

Pad diameter: $\phi 40, \phi 50, \phi 63, \phi 80, \phi 100, \phi 125$

Pad material: NBR, Silicone rubber, Urethane rubber, Fluoro rubber, EPR



Buffer stroke						
Pad dia.	$\phi 40$	$\phi 50$	$\phi 63$	$\phi 80$	$\phi 100$	$\phi 125$
Buffer stroke (mm)						
25	●	●	●	●	●	●
50	●	●	●	●	●	●
75	●	●	●	●	●	●
100	—	—	—	—	●	●

Pad Material and Characteristics

◎: Little or no influence ○: Can be used depending on conditions. X: Not suitable

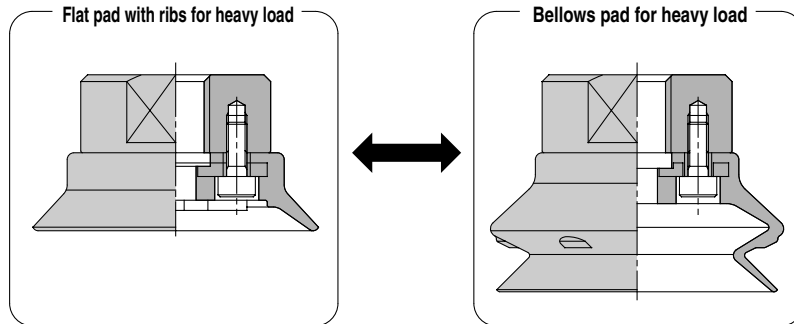
Characteristics	Durometer HS ($\pm 5^\circ$)	Operating temperature range ($^\circ\text{C}$)	Oil resistance gasoline	Oil resistance benzol	Base resistance	Acid resistance	Weatherability	Ozone resistance	Abrasion resistance	Waterproof	Solvent resistance (Benzene, toluene)
NBR	50°	0 to 120	◎	X	○	○	X	X	◎	○	X
Silicon rubber	50°	-30 to 250	X	X	○	X		◎	X	○	X
Urethane rubber	60°	0 to 60	◎	X	X	X	○	◎	◎	X	X
Fluoro rubber	60°	0 to 250	◎	◎	X	◎	◎	◎	○	◎	◎
EPR	50°	-20 to 150	X	X	◎	○	◎	◎	○	◎	X

The above table covers only general characteristics of subject rubber materials.

Pad materials used by SMC pass the nominal JIS material standards; however, actual performance depends on operating conditions.

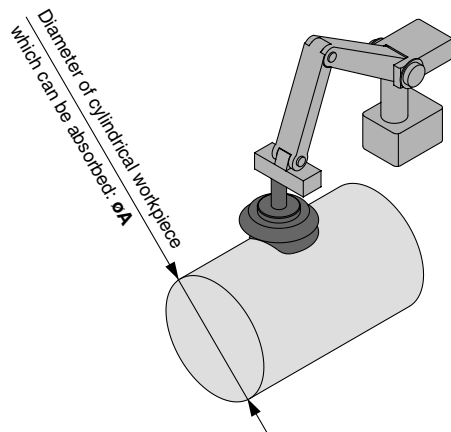
Interchangeable with flat pad with ribs for heavy loads.

When changing to a different shape pad due to load change, the pad can be easily interchanged.



Possible combination——Same pad diameter, $\phi 40$ and $\phi 50$, $\phi 63$ and $\phi 80$, $\phi 100$ and $\phi 125$

Possible adsorption to cylindrical loads with easy fit to the load shape.



* Pushing force for adsorption is almost equivalent to return force of buffer spring.

Table (1) Diameter of Cylindrical Workpiece Which can be Absorbed. (Reference value)

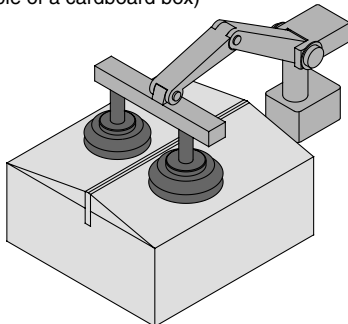
Model	Dia. of cylindrical workpiece which can be absorbed: ϕA ⁽¹⁾
ZP 40HB□	$\phi 80$ or more
50HB□	$\phi 100$ or more
63HB□	$\phi 120$ or more
80HB□	$\phi 160$ or more
100HB□	$\phi 180$ or more
125HB□	$\phi 230$ or more

Note 1) Please consult with SMC when requiring a diameter smaller than shown in table.

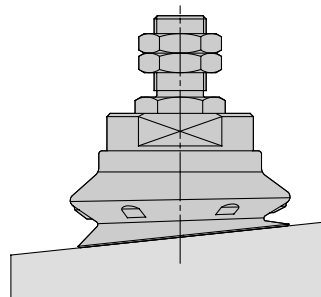
Note 2) Regard values mentioned above as reference only, since actual valves may depend on operating conditions.

Pad shape permits adsorption to sloped surfaces.

- When a workpiece could be deformed during adsorption or transportation. (Example of a cardboard box)



- When the adsorption surface of a workpiece is slanted. (Maximum angle: 5° *)



* Regard values mentioned above as reference only, since actual valves may depend on operating conditions.

ZX

ZR

ZM

ZH

ZU

ZL

ZY

ZQ

ZF

ZP

ZCU

AMJ

Misc.

Vacuum Pad: Large Size Bellows Type Vertical Vacuum Entry Without Buffer

Series ZPT



Specifications

Mounting	Vacuum entry direction	Vertical								
	Connection	Male thread	Female thread							
	Thread dia.	<table border="1"> <tr> <td>ø40, ø50</td> <td>M14 x 1</td> <td>M 8 x 1.25, M10 x 1.5</td> </tr> <tr> <td>ø63, ø80</td> <td>M16 x 1.5</td> <td>M 8 x 1.25, M10 x 1.5, M12 x 1.75, M16 x 1.5</td> </tr> <tr> <td>ø100, ø125</td> <td>M16 x 1.5</td> <td>M12 x 1.75, M16 x 1.5</td> </tr> </table>	ø40, ø50	M14 x 1	M 8 x 1.25, M10 x 1.5	ø63, ø80	M16 x 1.5	M 8 x 1.25, M10 x 1.5, M12 x 1.75, M16 x 1.5	ø100, ø125	M16 x 1.5
ø40, ø50	M14 x 1	M 8 x 1.25, M10 x 1.5								
ø63, ø80	M16 x 1.5	M 8 x 1.25, M10 x 1.5, M12 x 1.75, M16 x 1.5								
ø100, ø125	M16 x 1.5	M12 x 1.75, M16 x 1.5								
Vacuum entry port	Rc 1/8	Use the mounting port								

Pad Type

Pad diameter (mm)	ø40, ø50, ø63, ø80, ø100, ø125
Material (Color)	NBR (Black), Silicone rubber (White), Urethane rubber (Brown), Fluoro rubber (Black with mark $\text{\textcircled{F}}$), EPR (Black with mark $\text{\textcircled{E}}$)
Durometer	NBR/Silicone rubber/EPR (50°), Urethane/Fluoro rubber (60°)

Weight

(g)

NBR

Model	Weight	Model	Weight
ZPT40HBN-A14	73	ZPT 80HBN-A16	195
-B8	40	-B8	161
-B10	39	-B10	160
ZPT50HBN-A14	89	-B12	158
-B8	56	-B16	156
-B10	55	ZPT100HBN-A16	396
ZPT63HBN-A16	155	-B12	347
-B8	121	-B16	345
-B10	120	ZPT125HBN-A16	580
-B12	118	-B12	531
-B16	116	-B16	529

Add NBR weight to below table for other materials.

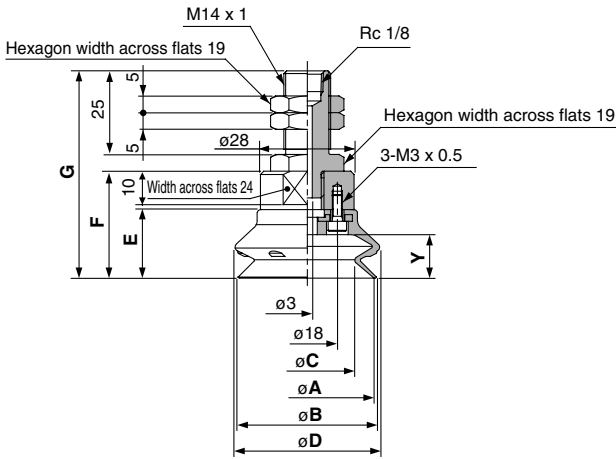
Pad dia.	Silicon rubber	Urethane rubber	Fluoro rubber	EPR
ø40	-1	+1	+10	0
ø50	-2	+1	+19	0
ø63	-3	+2	+37	0
ø80	-6	+2	+61	0
ø100	-12	+4	+121	-1
ø125	-22	+7	+228	-3

How to Order

ZPX		40	HB	N	A14
Pad diameter (mm)					Vacuum entry/Mounting thread diameter
40	ø40				ø40, ø50
50	ø50				ø63, ø80
63	ø63				ø100, ø125
80	ø80				
100	ø100				
125	ø125				
Pad type					
HB	Large bellows pad				
Material					
N	NBR				
S	Silicon rubber				
U	Urethane rubber				
F	Fluoro rubber				
E	EPR				

Vacuum Pad: Large Size Bellows Type Vertical Vacuum Entry without Buffer **Series ZPT**

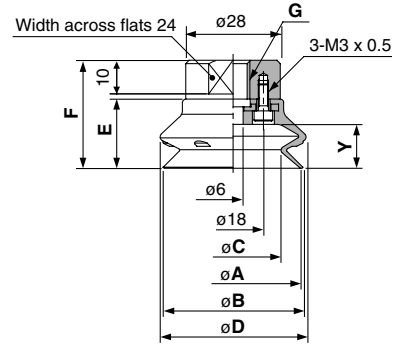
ZPT⁶³₈₀ HB□-A14 (Male thread)



Dimensions (mm)

Model	A	B	C	D	E	F	G	Y
ZPT40HB□-A14	40	41.4	28.4	43.2	20.5	32	62	13
ZPT50HB□-A14	50	51.9	35.7	54	24	35.5	65.5	16.5

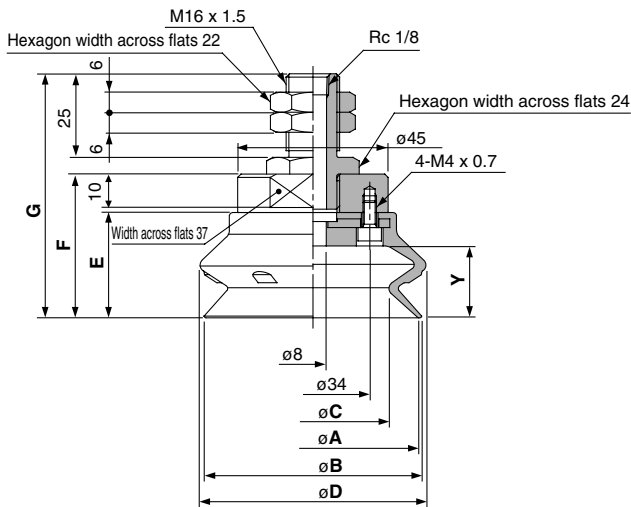
ZPT⁶³₈₀ HB□-B□ (Female thread)



Dimensions (mm)

Model	A	B	C	D	E	F	G	Y
ZPT40HB□-B8	40	41.4	28.4	43.2	20.5	32	M8 x 1.25	13
-B10							M10 x 1.5	
ZPT50HB□-B8							50	
-B10	M10 x 1.5							

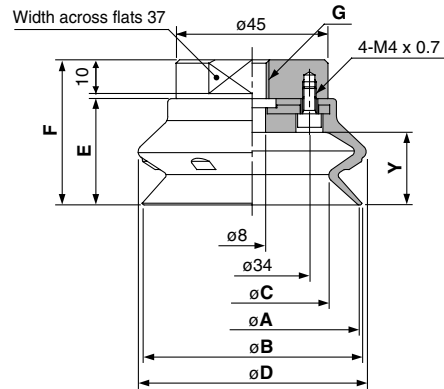
ZPT⁶³₈₀ HB□-A16 (Male thread)



Dimensions (mm)

Model	A	B	C	D	E	F	G	Y
ZPT63HB□-A16	63	65.1	45.5	67.6	31.5	43	73	21.5
ZPT80HB□-A16	80	83	58.4	85.1	37	48.5	78.5	27.5

ZPT⁶³₈₀ HB□-B□ (Female thread)



Dimensions (mm)

Model	A	B	C	D	E	F	G	Y
ZPT63HB□-B8	63	65.1	45.5	67.6	31.5	43	M8 x 1.25	21.5
-B10							M10 x 1.5	
-B12							M12 x 1.75	
-B16							M16 x 1.5	
ZPT80HB□-B8	80	83	58.4	85.1	37	48.5	M8 x 1.25	27.5
-B10							M10 x 1.5	
-B12							M12 x 1.75	
-B16							M16 x 1.5	

ZX

ZR

ZM

ZH

ZU

ZL

ZY

ZQ

ZF

ZP

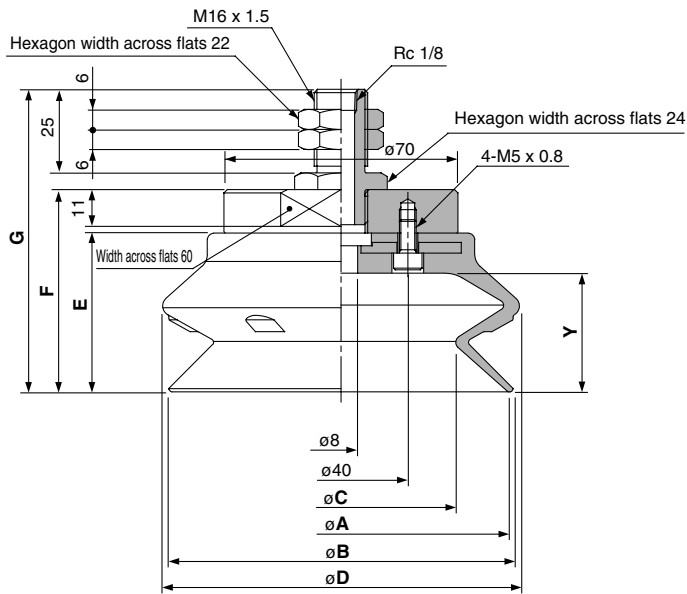
ZCU

AMJ

Misc.

Series ZPT

ZPT¹⁰⁰₁₂₅ HB□-A16 (Male thread)

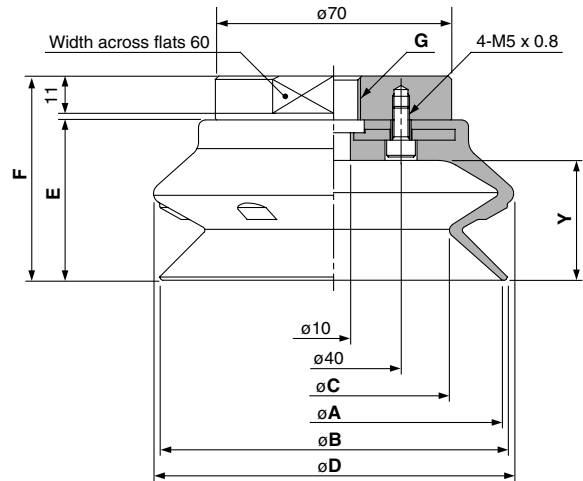


Dimensions

(mm)

Model	A	B	C	D	E	F	G	Y
ZPT100HB□-A16	100	103	68.5	107	47.5	60.5	90.5	35.5
ZPT125HB□-A16	125	128.5	88.5	135	56	69	99	44

ZPT¹⁰⁰₁₂₅ HB□-B□ (Female thread)



Dimensions

(mm)

Model	A	B	C	D	E	F	G	Y
ZPT100HB□-B12	100	103.1	68.6	106.7	47.5	60.5	M12 x 1.75	35.5
M16 x 1.5								
ZPT125HB□-B12	125	128.5	88.6	135	56	69	M12 x 1.75	44
M16 x 1.5								

Vacuum Pad: Large Size Bellows Type Vertical Vacuum Entry With Buffer

Series ZPT



Specifications

Mounting	Vacuum entry direction	Vertical	Buffer type		Rotating (J)	
	Connection	Male thread	Buffer stroke	ø40 to ø80	25, 50, 75 mm	
	Thread dia.	ø40, ø50		M18 x 1.5	ø100, ø125	25, 50, 75, 100 mm
		ø63, ø80		M18 x 1.5		
	ø100, ø125	M22 x 1.5	Vacuum entry port Rc 1/8			

Pad Type

Pad diameter (mm)	ø40, ø50, ø63, ø80, ø100, ø125
Material (Color)	NBR (Black), Silicone rubber (White), Urethane rubber (Brown), Fluoro rubber (Black with mark®), EPR (Black with mark®)
Durometer	NBR/Silicone rubber/EPR (50°), Urethane/Fluoro rubber (60°)

Weight

NBR

Model	Weight	Model	Weight
ZPT40HBNJ25-B01-A18	127	ZPT 80HBNJ50-B01-A18	268
50-B01-A18	147	75-B01-A18	289
75-B01-A18	168	ZPT100HBNJ25-B01-A22	535
ZPT50HBNJ25-B01-A18	143	50-B01-A22	575
50-B01-A18	163	75-B01-A22	620
75-B01-A18	201	100-B01-A22	659
ZPT63HBNJ25-B01-A18	208	ZPT125HBNJ25-B01-A22	719
50-B01-A18	228	50-B01-A22	759
75-B01-A18	249	75-B01-A22	804
ZPT80HBNJ25-B01-A18	231	100-B01-A22	843

Add NBR weight to below table for other materials.

Pad dia.	Silicon rubber	Urethane rubber	Fluoro rubber	EPR
ø40	-1	+1	+10	0
ø50	-2	+1	+19	0
ø63	-3	+2	+37	0
ø80	-6	+2	+61	0
ø100	-12	+4	+121	
ø125	-22	+7	+228	

How to Order

ZPT 40 HB N J 25 - B01 - A18

Pad diameter (mm)

40	ø40
50	ø50
63	ø63
80	ø80
100	ø100
125	ø125

Mounting thread

A18	M18 x 1.5 (ø40 to ø80)
A22	M22 x 1.5 (ø100, ø125)

Vacuum entry

B01	Rc 1/8
-----	--------

Pad type

HB	Large bellows pad
----	-------------------

Material

N	NBR
S	Silicon rubber
U	Urethane rubber
F	Fluoro rubber
E	EPR

Applicable buffer stroke (Rotating)

Stroke	ø40	ø50	ø63	ø80	ø100	ø125
25	●	●	●	●	●	●
50	●	●	●	●	●	●
75	●	●	●	●	●	●
100	—	—	—	—	●	●

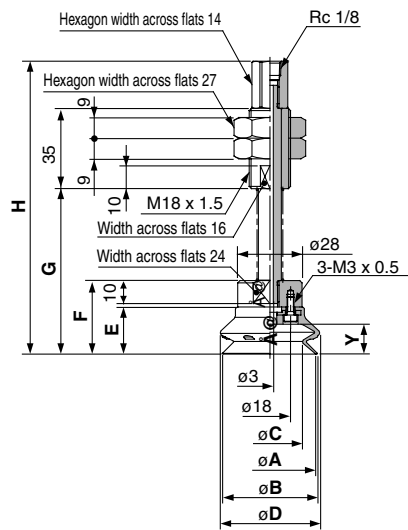
Spring Force

Pad dia.	First mounting load	Second mounting load
ø40 to ø80	First mounting load	6.9 N
	Second mounting load	11.8 N
ø100, ø150	First mounting load	10 N
	Second mounting load	15 N

- ZX
- ZR
- ZM
- ZH
- ZU
- ZL
- ZY
- ZQ
- ZF
- ZP
- ZCU
- AMJ
- Misc.

Series ZPT

ZPT₅₀⁴⁰HB□J□-B01-A18 (Male thread)

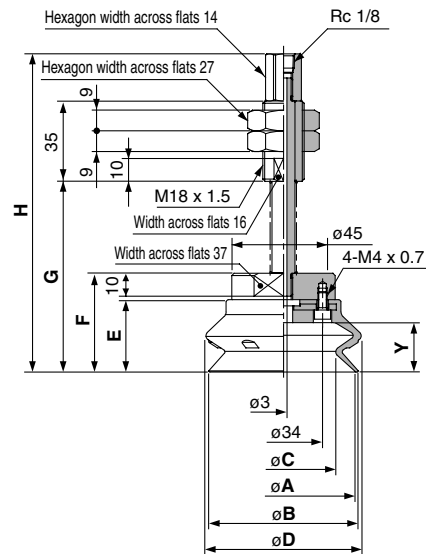


Dimensions

(mm)

Model	A	B	C	D	E	F	G	H	Y
ZPT40HB□J25-B01-A18							72	127.5	
50-B01-A18	40	41.4	28.4	43.2	20.5	32	107	162.5	13
75-B01-A18							143	198.5	
ZPT50HB□J25-B01-A18							75.5	131	
50-B01-A18	50	51.9	35.7	54	24	35.5	110.5	166	16.5
75-B01-A18							146.5	202	

ZPT₈₀⁶³HB□J□-B01-A18 (Male thread)

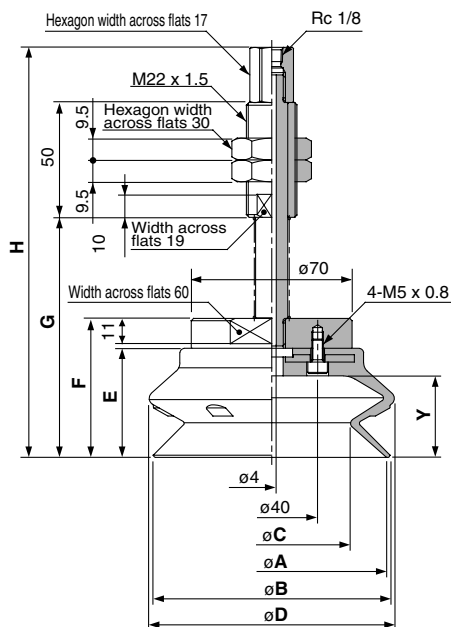


Dimensions

(mm)

Model	A	B	C	D	E	F	G	H	Y
ZPT63HB□J25-B01-A18							83	138.5	
50-B01-A18	63	65.1	45.5	67.6	31.5	43	118	173.5	21.5
75-B01-A18							154	209	
ZPT80HB□J25-B01-A18							88.5	144	
50-B01-A18	80	83	58.5	85.1	37	48.5	123.5	179	27.5
75-B01-A18							159.5	215	

ZPT₁₂₅¹⁰⁰HB□J□-B01-A22 (Male thread)



Dimensions

(mm)

Model	A	B	C	D	E	F	G	H	Y
ZPT100HB□J25-B01-A22							104.5	178.5	
50-B01-A22	100	103.1	68.6	106.7	47.5	60.5	140.5	214.5	35.5
75-B01-A22							180.5	254.5	
100-B01-A22							215.5	289.5	
ZPT125HB□J25-B01-A22							113	187	
50-B01-A22	125	128.5	88.6	135	56	69	149	223	44
75-B01-A22							189	263	
100-B01-A22							224	298	

Vacuum Pad: Large Size Bellows Type Lateral Vacuum Entry Without Buffer

Series ZPX



Specifications

Mounting	Vacuum entry direction	Lateral	
	Connection	Female thread	
	Thread dia.	ø40, ø50	M8 x 1.25 M10 x 1.5
		ø63, ø80	M10 x 1.5 M12 x 1.75
ø100, ø125		M10 x 1.5 M12 x 1.75	
Vacuum entry port		Rc 1/8	

Pad Type

Pad diameter (mm)	ø40, ø50, ø63, ø80, ø100, ø125
Material (Color)	NBR (Black), Silicone rubber (White), Urethane rubber (Brown), Fluoro rubber (Black with mark $\text{\textcircled{F}}$), EPR (Black with mark $\text{\textcircled{E}}$)
Durometer	NBR/Silicone rubber/EPR (50°), Urethane/Fluoro rubber (60°)

Weight

(g)

NBR

Model	Weight	Model	Weight
ZPX40HBN-B01-B8	150	ZPX 80HBN-B01-B10	275
-B10	152	-B12	271
ZPX50HBN-B01-B8	166	ZPX100HBN-B01-B10	464
-B10	164	-B12	460
ZPX63HBN-B01-B10	235	ZPX125HBN-B01-B10	648
-B12	225	-B12	644

Add NBR weight to below table for other materials.

Pad dia.	Silicon rubber	Urethane rubber	Fluoro rubber	EPR
ø40	-1	+1	+10	0
ø50	-2	+1	+19	0
ø63	-3	+2	+37	0
ø80	-6	+2	+61	0
ø100	-12	+4	+121	+1
ø125	-22	+7	+228	+3

How to Order

ZPX 40 HB N - B01 - B10

Pad diameter (mm)

40	ø40
50	ø50
63	ø63
80	ø80
100	ø100
125	ø125

Pad type

HB Large bellows pad

Mounting thread

		ø40, ø50	ø63, ø80	ø100, ø125
B 8	M8 x 1.25	●	—	—
B10	M10 x 1.5	●	●	●
B12	M12 x 1.75	—	●	●

Vacuum entry

B01 Rc 1/8

Material

N	NBR
S	Silicon rubber
U	Urethane rubber
F	Fluoro rubber
E	EPR

ZX

ZR

ZM

ZH

ZU

ZL

ZY

ZQ

ZF

ZP

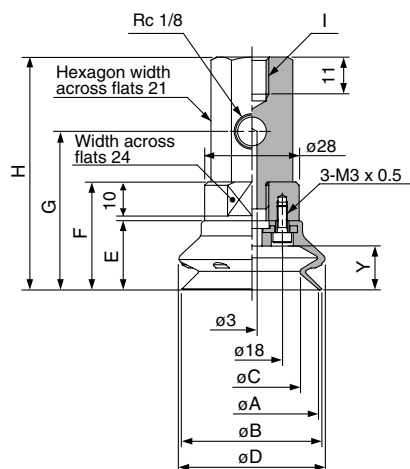
ZCU

AMJ

Misc.

Series ZPX

ZPX₅₀⁴⁰HB□-B01-B□ (Female thread)

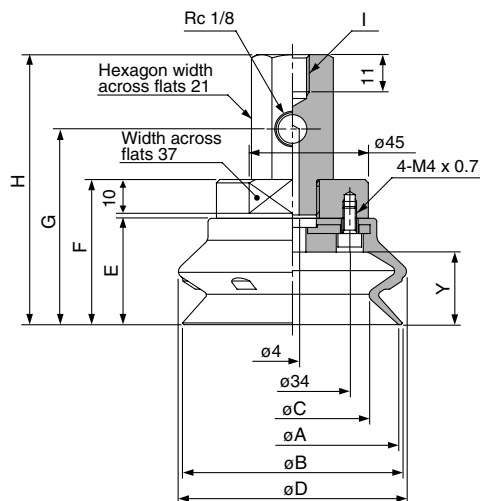


Dimensions

(mm)

Model	A	B	C	D	E	F	G	H	I	Y
ZPX40HB□-B01-B8	40	41.4	28.4	43.2	20.5	32	47	69	M8 x 1.25	13
-B10									M10 x 1.5	
ZPX50HB□-B01-B8	50	51.9	35.7	54	24	35.5	50.5	72.5	M8 x 1.25	16.5
-B10									M10 x 1.5	

ZPX₈₀⁶⁵HB□-B01-B□ (Female thread)

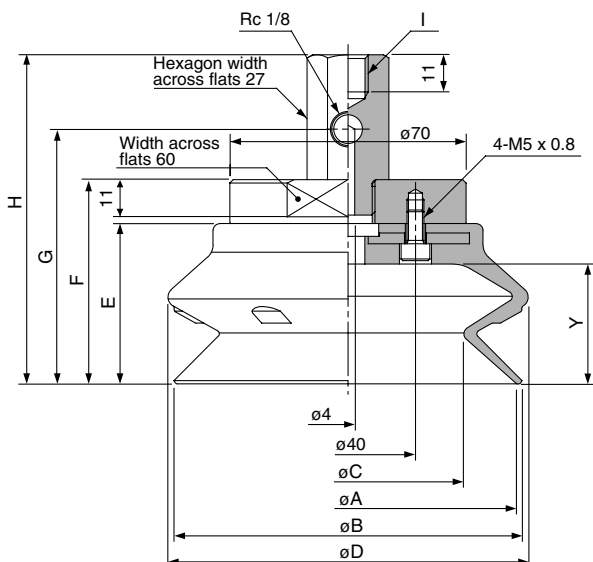


Dimensions

(mm)

Model	A	B	C	D	E	F	G	H	I	Y
ZPX63HB□-B01-B10	63	65.1	45.5	67.6	31.5	43	58	80	M10 x 1.5	21.5
-B12									M12 x 1.75	
ZPX80HB□-B01-B10	80	83	58.4	85.1	37	48.5	63.5	85.5	M10 x 1.5	27.5
-B12									M12 x 1.75	

ZPX₁₂₅¹⁰⁰HB□-B01-B□ (Female thread)



Dimensions

(mm)

Model	A	B	C	D	E	F	G	H	I	Y
ZPX100HB□-B01-B10	100	103.1	68.6	106.7	47.5	60.5	75.5	97.5	M10 x 1.5	35.5
-B12									M12 x 1.75	
ZPX125HB□-B01-B10	125	128.5	88.6	135	56	69	84	106	M10 x 1.5	44
-B12									M12 x 1.75	

Vacuum Pad: Large Size Bellows Type Lateral Vacuum Entry With Buffer

Series ZPX



Specifications

Mounting	Vacuum entry direction	Lateral	Buffer type		Rotating (J)
	Connection	Male thread	Buffer stroke	ø40 to ø80	25, 50, 75 mm
	Thread dia.	ø40, ø50		M18 x 1.5	ø100, ø125
		ø63, ø80	M18 x 1.5		
	ø100, ø125	M22 x 1.5	Vacuum entry port		
		Rc 1/8			

Pad Type

Pad diameter (mm)	ø40, ø50, ø63, ø80, ø100, ø125
Material (Color)	NBR (Black), Silicone rubber (White), Urethane rubber (Brown), Fluoro rubber (Black with mark (E)), EPR (Black with mark (E))
Durometer	NBR/Silicone rubber/EPR (50°), Urethane/Fluoro rubber (60°)

Weight

(g)

NBR

Model	Weight	Model	Weight
ZPX40HBNJ25-B01-A18	268	ZPX 80HBNJ50-B01-A18	418
50-B01-A18	289	75-B01-A18	441
75-B01-A18	312	ZPX100HBNJ25-B01-A22	684
ZPX50HBNJ25-B01-A18	284	50-B01-A22	723
50-B01-A18	305	75-B01-A22	767
75-B01-A18	328	100-B01-A22	806
ZPX63HBNJ25-B01-A18	357	ZPX125HBNJ25-B01-A22	868
50-B01-A18	378	50-B01-A22	907
75-B01-A18	401	75-B01-A22	951
ZPX80HBNJ25-B01-A18	397	100-B01-A22	990

Add NBR weight to below table for other materials.

Pad dia.	Silicon rubber	Urethane rubber	Fluoro rubber	EPR
ø40	-1	+1	+10	0
ø50	-2	+1	+19	0
ø63	-3	+2	+37	0
ø80	-6	+2	+61	0
ø100	-12	+4	+121	-1
ø125	-22	+7	+228	-3

How to Order

ZPX 40 HB N J 25 - B01 - A18

Pad diameter (mm)

40	ø40
50	ø50
63	ø63
80	ø80
100	ø100
125	ø125

Mounting thread

A18	M18 x 1.5 (ø40 to ø80)
A22	M22 x 1.5 (ø100, ø125)

Vacuum entry

B01	Rc 1/8
-----	--------

Pad type

HB	Large bellows pad
----	-------------------

Material

N	NBR
S	Silicon rubber
U	Urethane rubber
F	Fluoro rubber
E	EPR

Applicable buffer stroke (Rotating)

Stroke	ø40	ø50	ø63	ø80	ø100	ø125
25	●	●	●	●	●	●
50	●	●	●	●	●	●
75	●	●	●	●	●	●
100	—	—	—	—	●	●

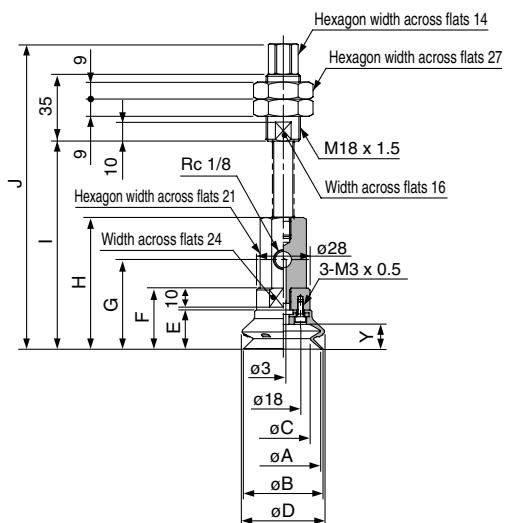
Spring Force

Pad diameter	First mounting load	Second mounting load
ø40 to ø80	6.9 N	11.8 N
ø100, ø150	10 N	15 N

- ZX
- ZR
- ZM
- ZH
- ZU
- ZL
- ZY
- ZQ
- ZF
- ZP
- ZCU
- AMJ
- Misc.

Series ZPX

ZPX₅₀⁴⁰HB□J□-B01-A18 (Male thread)

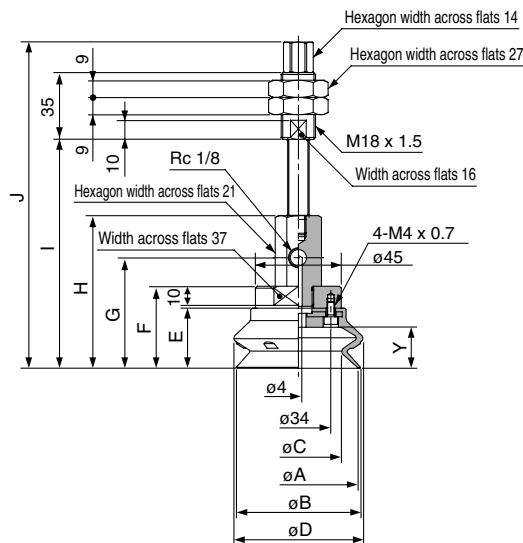


Dimensions

(mm)

Model	A	B	C	D	E	F	G	H	I	J	Y
ZPX40HB□J25-B01-A18									109	160	
50-B01-A18	40	41.4	28.4	43.2	20.5	32	47	69	144	195	13
75-B01-A18									180	231	
ZPX50HB□J25-B01-A18									112.5	163.5	
50-B01-A18	50	51.9	35.7	54	24	35.5	50.5	72.5	147.5	198.5	16.5
75-B01-A18									183.5	234.5	

ZPX₈₀⁶³HB□J□-B01-A18 (Male thread)

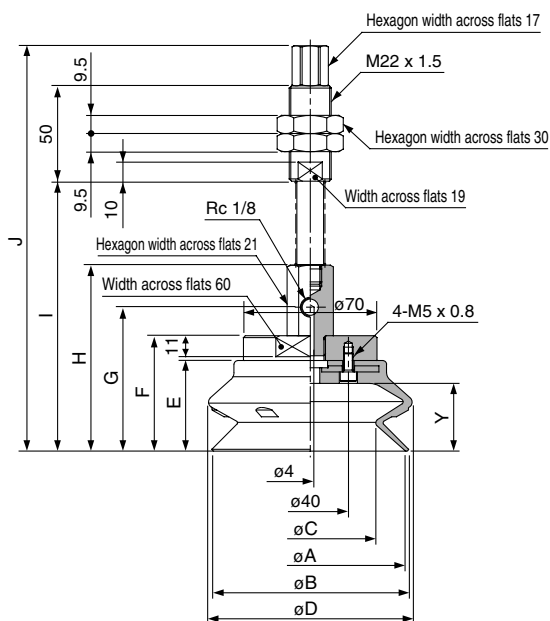


Dimensions

(mm)

Model	A	B	C	D	E	F	G	H	I	J	Y
ZPX63HB□J25-B01-A18									120	171	
50-B01-A18	63	65.1	45.5	67.6	31.5	43	58	80	155	206	21.5
75-B01-A18									191	242	
ZPX80HB□J25-B01-A18									125.5	176.5	
50-B01-A18	80	83	58.4	85.1	37	48.5	63.5	85.5	160.5	211.5	27.5
75-B01-A18									196.5	247.5	

ZPX₁₂₅¹⁰⁰HB□J□-B01-A22 (Male thread)



Dimensions

(mm)

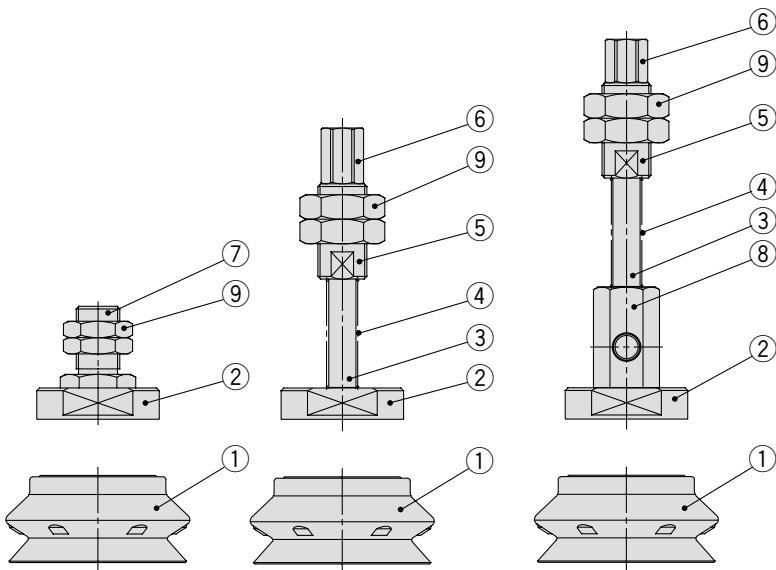
Model	A	B	C	D	E	F	G	H	I	J	Y
ZPX100HB□J25-B01-A22									141.5	212.5	
50-B01-A22	100	103.1	68.6	106.7	47.5	60.5	75.5	97.5	177.5	248.5	35.5
75-B01-A22									217.5	288.5	
100-B01-A22									252.5	323.5	
ZPX125HB□J25-B01-A22									150	221	
50-B01-A22	125	128.5	88.6	135	56	69	84	106	186	257	44
75-B01-A22									226	297	
100-B01-A22									261	332	

Vacuum Pad: Large Size Bellows Type Vertical Vacuum Entry with Buffer Series ZPT/ZPX

Construction

Series ZPT

Series ZPX



Component Parts

No.	Description	Material	Surface treatment
①	Pad	NBR, Silicone rubber, Urethane rubber, Fluoro rubber, EPR	—
②	Adapter plate	Aluminum	—
③	Piston rod	Carbon steel	Hard chrome plated
④	Spring	Stainless steel	—
⑤	Buffer body	Aluminum	—
⑥	Buffer adaptor	Brass	Electroless nickel plated
⑦	Adaptor A	Brass	Electroless nickel plated
⑧	X type adaptor	Brass	Electroless nickel plated
⑨	Mounting nut	Rolled steel	Black zinc chromated

- ZX
- ZR
- ZM
- ZH
- ZU
- ZL
- ZY
- ZQ
- ZF
- ZP
- ZCU
- AMJ
- Misc.

Replacement Parts/Pad Unit

How to Order

ZP 40 HB N

Pad diameter (mm)

40	ø40
50	ø50
63	ø63
80	ø80
100	ø100
125	ø125

Material

N	NBR
S	Silicon rubber
U	Urethane rubber
F	Fluoro rubber
E	EPR

Pad type
HB Large bellows pad

Weight

NBR

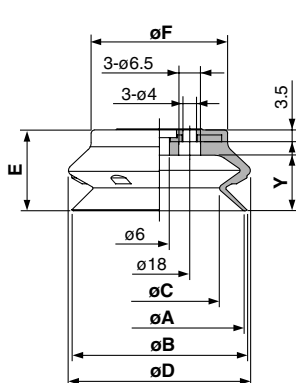
Model	Weight
ZP 40HBN	17
ZP 50HBN	33
ZP 63HBN	63
ZP 80HBN	103
ZP100HBN	206
ZP125HBN	390

Add NBR weight to below table for other materials.

Pad dia.	Silicon rubber	Urethane rubber	Fluoro rubber	EPR
ø40	-1	+1	+10	0
ø50	-2	+1	+19	0
ø63	-3	+2	+37	0
ø80	-6	+2	+61	0
ø100	-12	+4	+121	-1
ø125	-22	+7	+228	-3

Dimensions

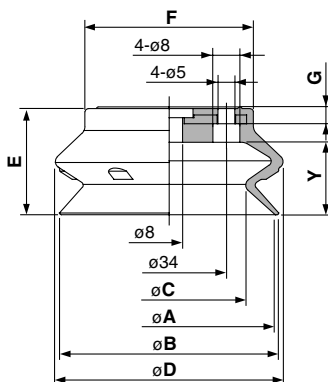
ZP₅₀⁴⁰HB□



Dimensions (mm)

Model	A	B	C	D	E	F	Y
ZP40HB□	40	41.4	28.4	43.2	20.5	30	13
ZP50HB□	50	51.9	35.7	54	24	40.5	16.5

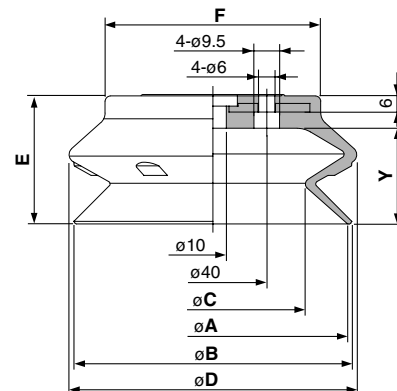
ZP₈₀⁶³HB□



Dimensions (mm)

Model	A	B	C	D	E	F	G	Y
ZP63HB□	63	65.1	45.5	67.6	31.5	50	4.5	21.5
ZP80HB□	80	83	58.4	85.1	37	64	5	27.5

ZP₁₂₅¹⁰⁰HB□



Dimensions (mm)

Model	A	B	C	D	E	F	Y
ZP100HB□	100	103.1	68.6	106.7	47.5	80	35.5
ZP125HB□	125	128.5	88.6	135	56	105	44

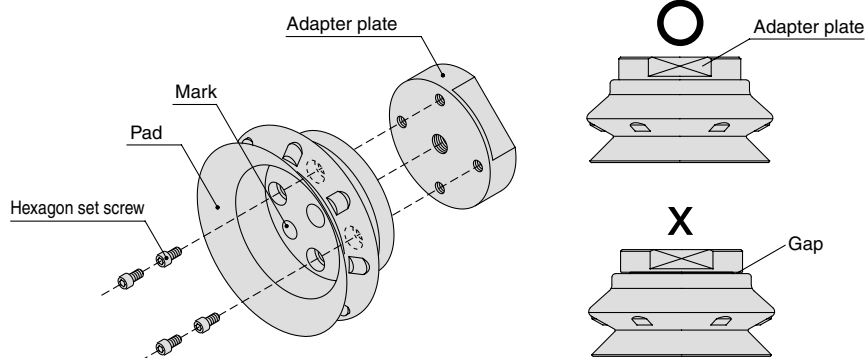
Series ZPT/ZPX

How to Assemble/Disassemble

Remove bolts with a hex. key wrench from the pad underside. Tighten new pad with the bolts ensuring there is no gap between the adapter plate and the pad.

How to Distinguish Different Pad Materials

Check for the indicator mark on the pad's interior surface as shown in the figure at left.



Material	Color	Mark
NBR	Black	—
Silicon rubber	White	—
Urethane rubber	Brown	—
Fluoro rubber	Black	⊕
EPR	Black	⊕

Replacement Parts/Mounting Nut

How to Order

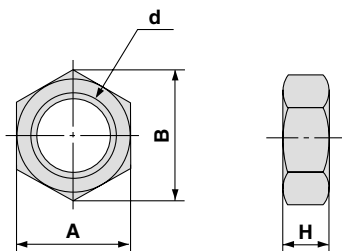
ZPNA — M16

• **Mounting thread**

M16	M16 x 1.5
M18	M18 x 1.5
M22	M22 x 1.5

Mounting nut part number for "M14x1" is "SN-015A".

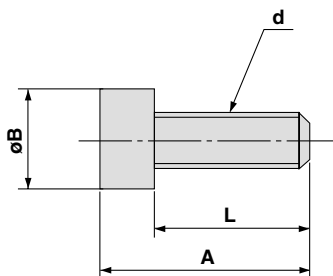
Dimensions



Model	A	B	d	H
SN-015A	19	21.9	M14 x 1	5
ZPNA-M16	22	25.4	M16 x 1.5	6
ZPNA-M18	27	31.2	M18 x 1.5	9
ZPNA-M22	30	34.6	M22 x 1.5	8

Bolts (Hexagonal Socket Head Cap Screw)

Dimensions



A	B	d	L
11	5.5	M3 x 0.5	8
12	7	M4 x 0.7	8
15	8.5	M5 x 0.8	10