

# Precision Clean Regulator **Series SRP**



High precision, low flow consumption stainless steel regulator

# Precision Clean Regulator *Series SRP*

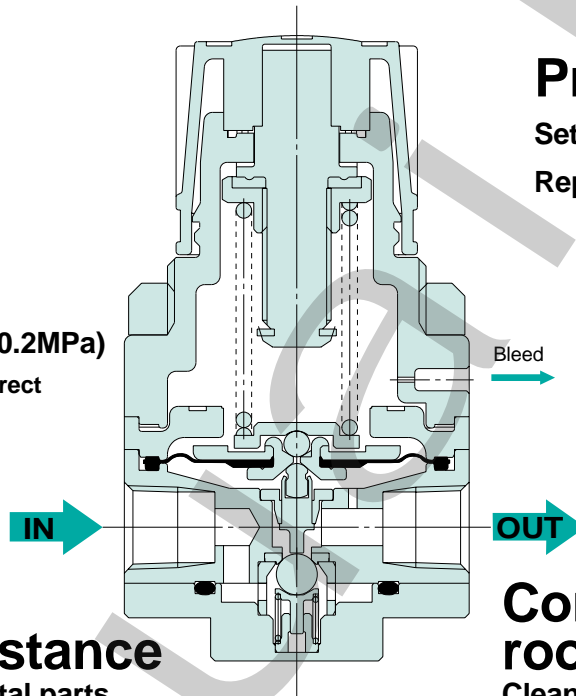
**High precision, low flow consumption stainless steel regulator**



**Achieves flow consumption "under a liter"**

**Bleed volume**  
0.5 /min(ANR) or less  
(downstream pressure at 0.2MPa)

\* Approx. 1/4 of the ARP3000 direct operated precision regulator



**Precision**

Setting sensitivity: 0.3%F.S.  
Repeatability: 1%F.S.

**Oil free**

Parts composition with no use of oils.  
HFC1416 ultrasonic cleaning of all fluid-contact parts.

**Excellent corrosion resistance**

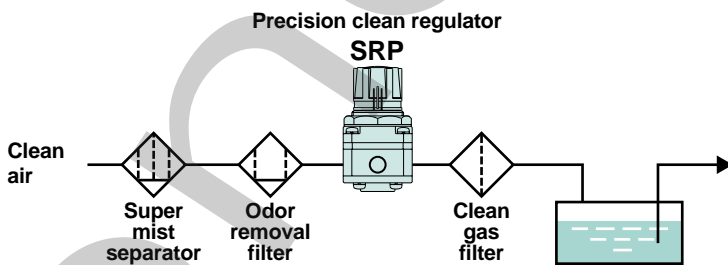
SUS316 is used for all metal parts in contact with the fluid.

**Consistent clean room production**

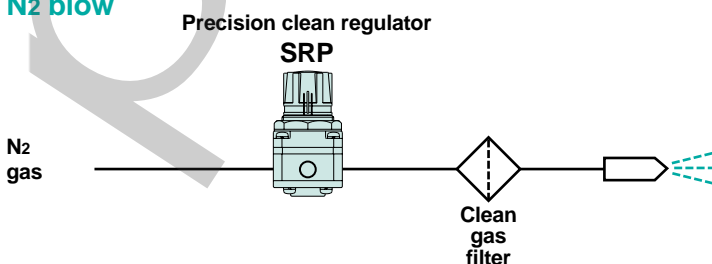
Cleaned, assembled, inspected, and sealed in double packaging in a Class 10,000 environment

## Applications

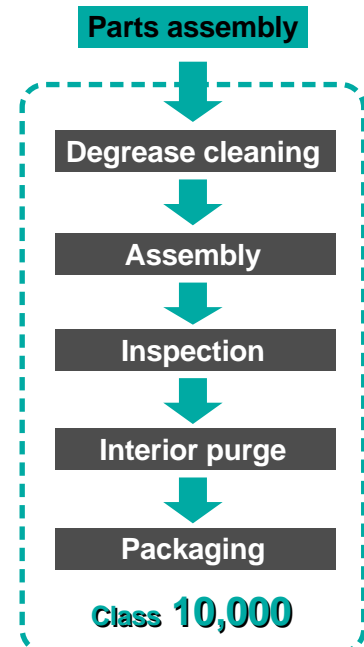
### Pressure feed of chemicals



### N2 blow



## Manufacturing process



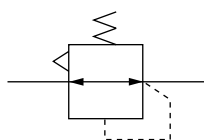
# Precision Clean Regulator Series **SRP**



## How to Order



JIS symbol



SRP 1 1 0 1 01 R

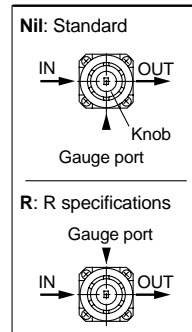
**Set pressure**

0	0.005 to 0.2MPa
1	0.01 to 0.4MPa

**Port size**

Symbol	Piping port size
M5	M5 x 0.8
01	Rc 1/8

**Gauge port orientation**



\* Gauge port positions are indicated with the knob on the top side.

## Options

Description	Model	Material
Bracket	B21-1-T1	Rolled steel plate (electroless nickel plated)

## Specifications

Connection port size		M5, Rc 1/8
Fluid		Air, N <sub>2</sub> , CO <sub>2</sub> , Ar
Proof pressure MPa		1.5
Maximum operating pressure MPa		1.0
Regulating pressure range MPa	Low pressure type	0.005 to 0.2
	High pressure type	0.01 to 0.4
Ambient and fluid temperature (°C)		0 to 60
Fluid consumption /min (ANR) <sup>Note 1)</sup>		0.5 or less
Sensitivity		0.3% of full span
Repeatability		±1% of full span
Fluid-contact parts	Metal	SUS316
	Resin	Fluororesin
	Rubber	Fluoro rubber
	Other	Ceramics
Assembly environment		Clean room class 10000
Parts cleaning		HCFC141b ultrasonic cleaning of all fluid-contact parts

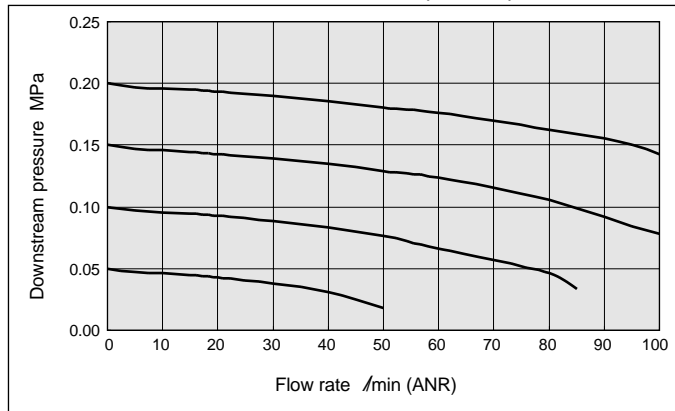
Note 1) At set pressure of 0.2MPa

# Series SRP

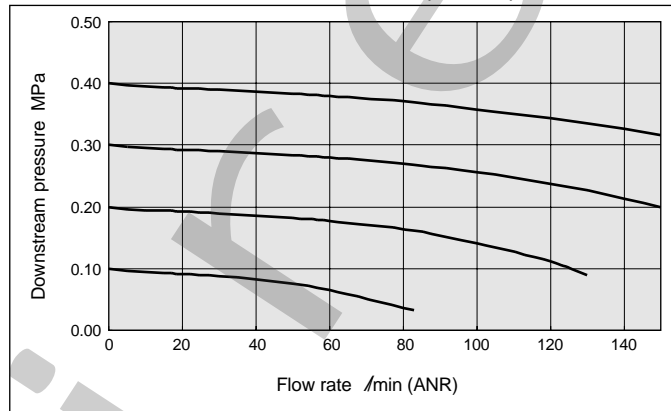
## Flow Characteristics

Fluid: Air

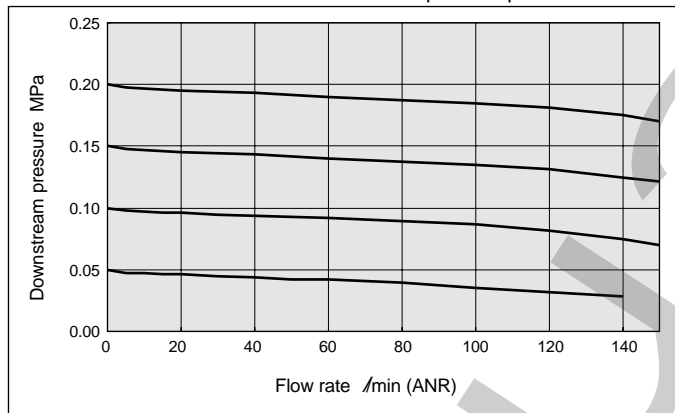
SRP1101-M5 Conditions/Upstream pressure: 0.5MPa



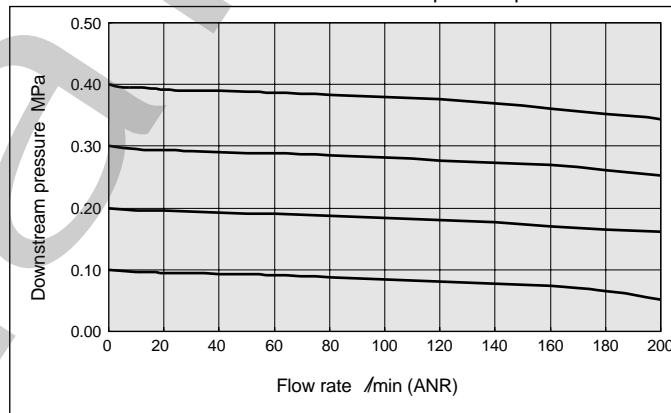
SRP1111-M5 Conditions/Upstream pressure: 0.7MPa



SRP1101-01 Conditions/Upstream pressure: 0.5MPa



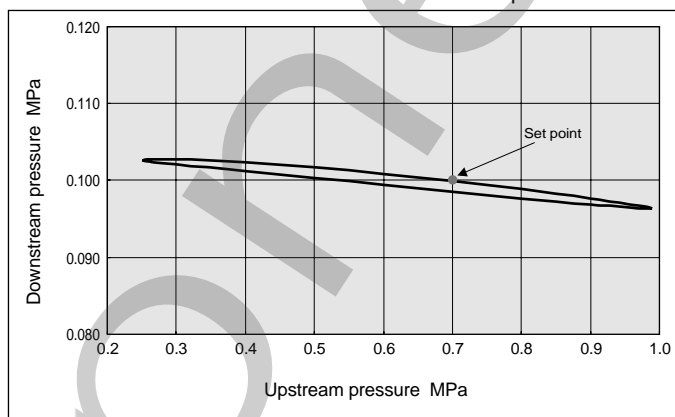
SRP1111-01 Conditions/Upstream pressure: 0.7MPa



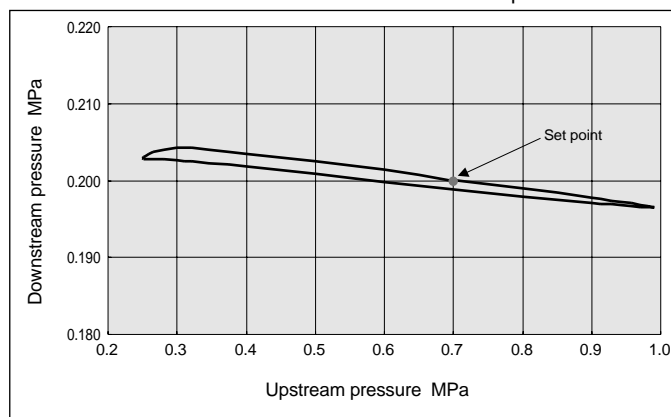
## Pressure Characteristics

Fluid: Air

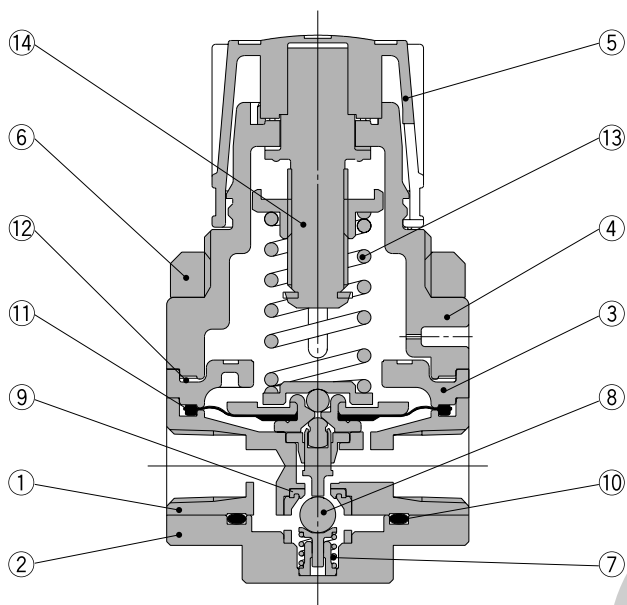
SRP1101 Initial setting/Upstream pressure: 0.7MPa  
Downstream pressure: 0.1MPa



SRP1111 Initial setting/Upstream pressure: 0.7MPa  
Downstream pressure: 0.2MPa



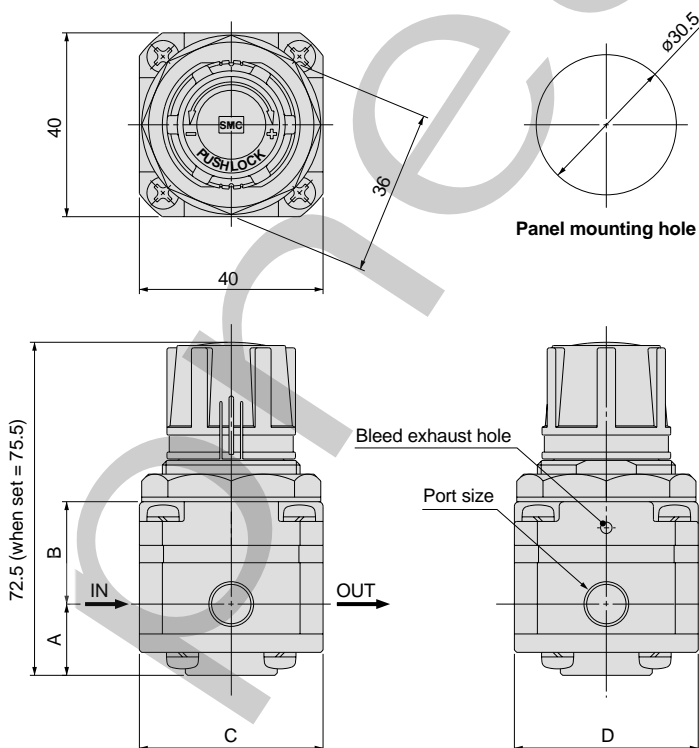
**Construction**



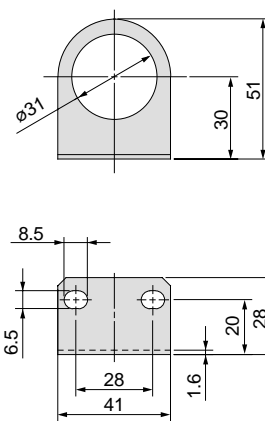
**Parts list**

No.	Description	Material	Treatment
1	Body	SUS316L	
2	Valve guide	SUS316	
3	Spacer	PPS	
4	Bonnet	PPS	
5	Knob	PBT	
6	Set nut	ZDC	Electroless nickel plated
7	Valve spring	SUS316	
8	Main valve	Ceramics	
9	Valve seat	PTFE	
10	O-ring	Fluoro rubber	
11	Diaphragm	Fluoro rubber	
12	Gasket	Fluoro rubber	
13	Pressure regulator spring	Steel wire	
14	Pressure regulator screw assembly	—	

**Dimensions**



**Bracket**



Model	Port size	A	B	C	D
SRP11□1-M5	M5 x 0.8	14	23.5	30	30
SRP11□1-01	Rc 1/8	15	22.5	40	40