

Swivels

Pneumair®

General Introduction

Introduction

Since its inception in 1968, the Quick Coupling Division has focused its efforts on developing advanced machining technologies, specialized heat treat processes, optimum seal designs as well as a host of other design and manufacturing parameters to ensure the overall integrity of our quick coupling products. QCD has drawn on the same resources that have made us the market leader in the design and manufacturing of quick coupling products to develop our lines of hydraulic swivels to meet the most rugged applications.

Applications

Some common markets and applications for swivels are:

- Injection Molding
- Pulp and Paper
- Logging
- Refuse Trucks
- Utility Equipment
- Mobile Equipment
- Hose Reels
- Pressure Washers
- Machine Tools
- Steel Mills
- Palletizers
- And many more...

Table of Contents

Swivels

Introduction and Applications.....D-1

PS Series

IntroductionD-4
How To OrderD-5
In-LineD-6
90°D-15
Repair KitsD-26
Seal OptionsD-26

S Series

IntroductionD-27
How To OrderD-28
90°D-29
Repair KitsD-33
Seal OptionsD-33

Phenelair

D Swivels

Swivels

Introduction

PS Series

Introduction

The design and manufacturing processes vital to a swivel's quality are the cornerstone of the Quick Coupling Division's day to day operations. The PS Series Swivel is designed to meet the application needs and performance requirements of the market. Pressure capabilities up to 5000 psi, 1/4" through 2" body sizes, a variety of port options, zinc with yellow chromate or nickel plating and a wide range of seal options make the PS Series Swivels ideal for an array of dynamic applications.

As with all of our products the Quick Coupling Division is committed to premier customer service. We view our customers as partners in vital technologies, and are dedicated to developing innovative solutions to complex problems while providing premier customer service. We value those partnerships and look forward to the opportunities that lie ahead with our line of PS Series Swivels.



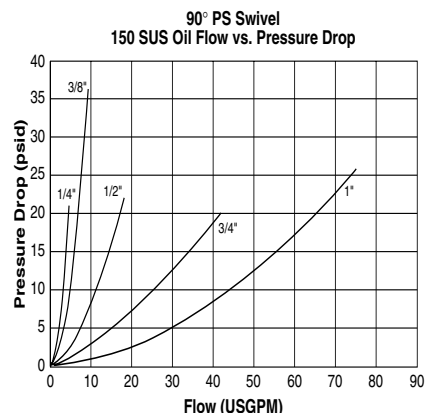
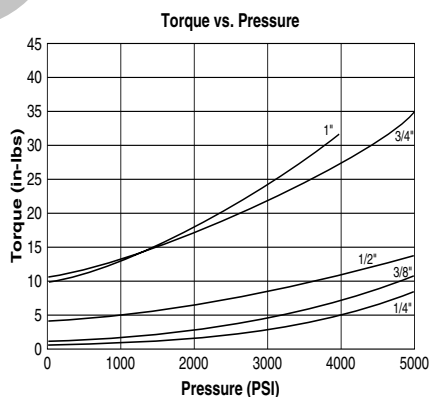
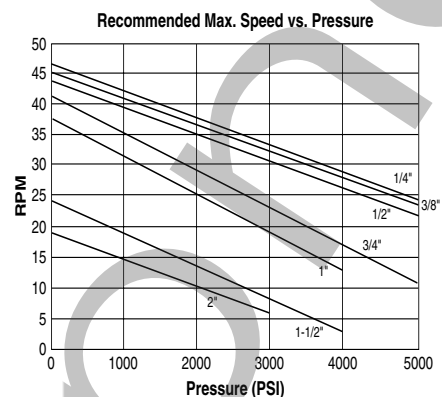
Features

- Hardened bearing races for extended service life.
- Full flow design minimizes pressure drop for optimum system performance.
- Sealed bearing design isolates bearing race from media and environment.
- Reduced bearing load design minimizes wear in the bearing race and extends service life.
- PTFE back-up rings support primary seal for high-pressure applications.
- Zinc with yellow chromate plating for maximum corrosion resistance.
- Variety of seal options available.
- Three piece swivel design for sizes 1 1/4" through 2" for superior performance and service life.
- Precision needle bearings and ball bearings sized 1 1/4" through 2" for additional side load resistance.
- Polyurethane U-Cup primary seal standard for sizes 1 1/4" through 2".
- PS Series Swivels eliminate hose twist and torque that may cause premature hose failure.

Specifications

Body Size (in.)	1/4	3/8	1/2	3/4	1	1-1/4	1-1/2	2
Maximum Rated Pressure (PSI)	5000	5000	5000	5000	4000	4000	4000	3000
<i>Except the following port options in the noted size</i>								
03 (Male JIC 37°)							3000	2000
05 (Male SAE O-Ring Boss)								2500
06 (Female JIC 37°) 90° Housing Port				4000	3000	3000	2500	2000
06 (Female JIC 37°) In-Line Housing Port							3000	2000
07 (Female NPSM)			4600	3000	2600	2100	1650	1500
Temperature Range (std seals)				-40° to 250° F			-30° to 180° F	

Performance Data

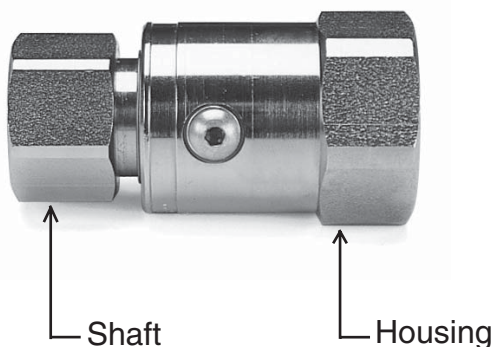


Swivels

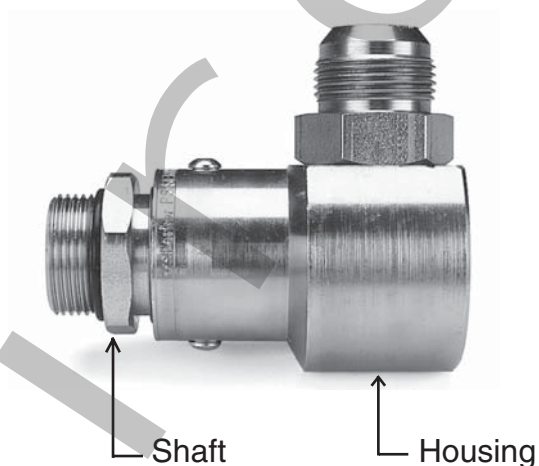
How To Order

PS Series

In-Line Swivels

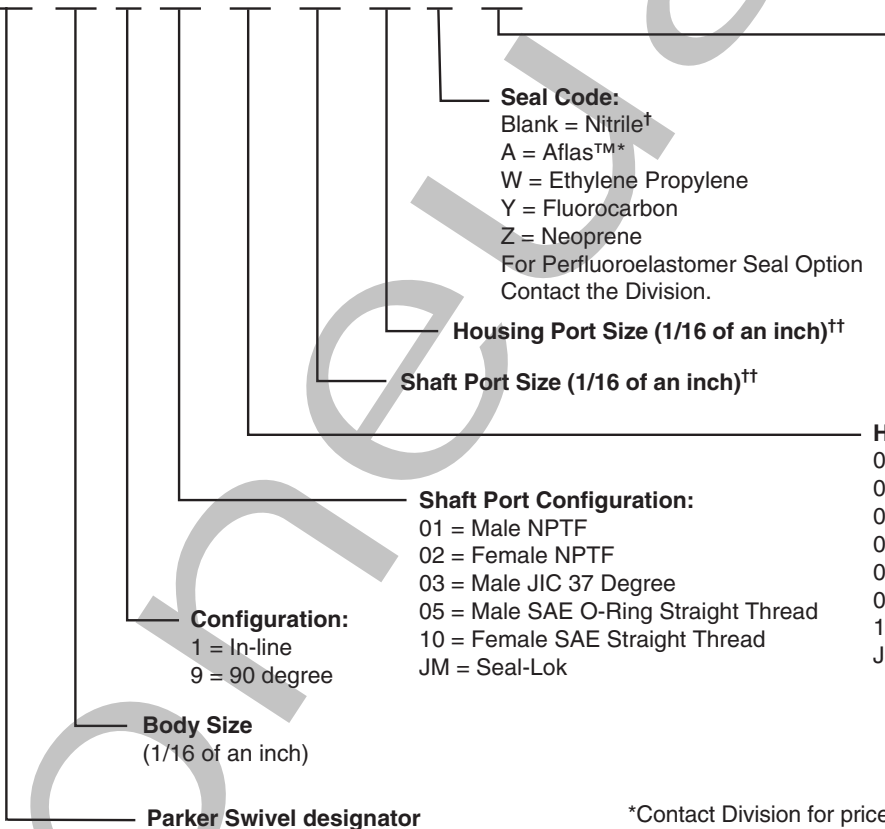


90° Swivels



PS Part Number:

PS 16 1 02 02-16-16 Y-



Seal Code:
 Blank = Nitrile†
 A = Aflas™*
 W = Ethylene Propylene
 Y = Fluorocarbon
 Z = Neoprene
 For Perfluoroelastomer Seal Option
 Contact the Division.

Housing Port Size (1/16 of an inch)††

Shaft Port Size (1/16 of an inch)††

Shaft Port Configuration:

- 01 = Male NPTF
- 02 = Female NPTF
- 03 = Male JIC 37 Degree
- 05 = Male SAE O-Ring Straight Thread
- 10 = Female SAE Straight Thread
- JM = Seal-Lok

Configuration:

- 1 = In-line
- 9 = 90 degree

Body Size
(1/16 of an inch)

Parker Swivel designator

Material and Finish:

- Blank = Carbon Steel w/Zinc & Yellow Chromate Plating (Std.)
- NI = Carbon Steel with Electroless Nickel Plating*
- S3 = 303 Stainless Steel Passivated*
- S6 = 316 Stainless Steel Electropolished*

Housing Port Configuration:

- 01 = Male NPTF(Non-Standard)*
- 02 = Female NPTF
- 03 = Male JIC 37 Degree
- 05 = Male SAE O-Ring Straight Thread
- 06 = Female JIC 37 Degree
- 07 = Female NPSM Pipe Swivel
- 10 = Female SAE Straight Thread
- JM = Seal-Lok

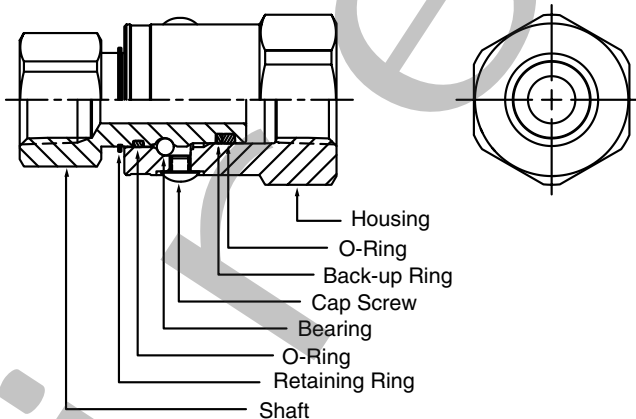
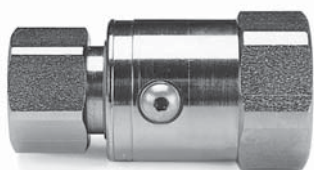
*Contact Division for price and delivery

† On -24 and -32 sizes, Polyurethane U-Cup Seal is standard.

†† For -20 Ports, -24 Body is used.

Swivels

In-Line
PS Series

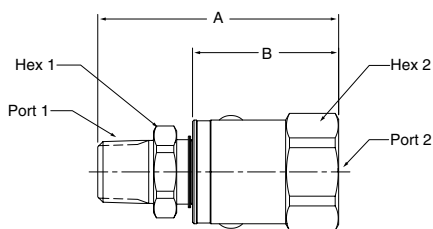


Materials Of Construction

- Housing*:.....Carbon Steel
- Shaft*:.....Carbon Steel
- Plating*:.....Zinc with Yellow Chromate
- Bearing*:.....Chrome
- O-Rings*:.....Buna-N
- Back-Up Ring:.....PTFE

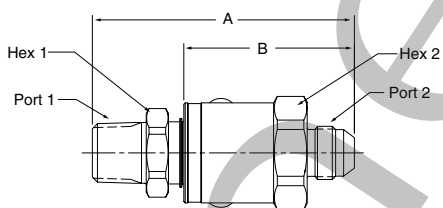
* See How-To-Order for optional material, plating, and seals.

Male Pipe - Female Pipe



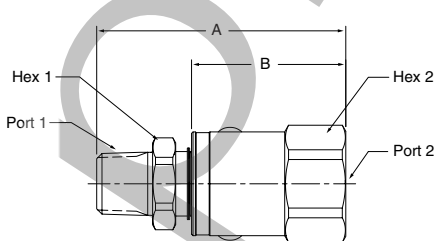
Part Number	A	B	Hex 1	Hex 2	Port 1	Port 2
PS410102-4-4	2.87" 72.9 mm	1.85" 47.0 mm	.75" 19.0 mm	1.19" 30.2 mm	1/4-18 NPTF	1/4-18 NPTF
PS610102-6-6	2.98" 75.6 mm	1.92" 48.8 mm	.88" 22.2 mm	1.31" 33.3 mm	3/8-18 NPTF	3/8-18 NPTF
PS810102-8-8	3.24" 82.2 mm	1.96" 50.0 mm	1.12" 28.6 mm	1.50" 36.5 mm	1/2-14 NPTF	1/2-14 NPTF
PS1210102-12-12	3.46" 87.8 mm	2.16" 55.0 mm	1.38" 35.0 mm	1.69" 42.9 mm	3/4-14 NPTF	3/4-14 NPTF
PS1610102-16-16	3.74" 95.1 mm	2.26" 57.4 mm	1.62" 41.3 mm	1.88" 47.6 mm	1-11 1/2 NPTF	1-11 1/2 NPTF

Male Pipe - Male 37° Flare



Part Number	A	B	Hex 1	Hex 2	Port 1	Port 2
PS410103-4-4	3.11" 78.9 mm	2.08" 53.0 mm	.75" 19.0 mm	1.19" 30.2 mm	1/4-18 NPTF	7/16-20 UNF-2A
PS610103-6-6	3.23" 82.0 mm	2.18" 55.2 mm	.88" 22.2	1.31" 33.3 mm	3/8-18 NPTF	9/16-18 UNF-2A
PS810103-8-8	3.65" 92.6 mm	2.38" 60.3 mm	1.12" 28.6 mm	1.50" 36.5 mm	1/2-14 NPTF	3/4-16 UNF-2A
PS1210103-12-12	3.86" 98.1 mm	2.57" 65.3 mm	1.38" 35.0 mm	1.69" 42.9 mm	3/4-14 NPTF	1-1/16-12 UN-2A
PS1610103-16-16	4.09" 103.8 mm	2.60" 66.2 mm	1.62" 41.3 mm	1.88" 47.6 mm	1-11 1/2 NPTF	1-5/16-12 UN-2A

Male Pipe - Female 37° Flare



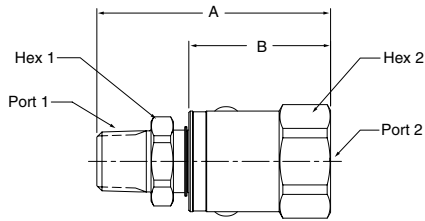
Part Number	A	B	Hex 1	Hex 2	Port 1	Port 2
PS410106-4-4	2.96" 75.2 mm	1.94" 49.3 mm	.75" 19.0 mm	1.19" 30.2 mm	1/4-18 NPTF	7/16-20 UNF-2B
PS610106-6-6	3.06" 77.7 mm	2.00" 50.9 mm	.88" 22.2 mm	1.31" 33.3 mm	3/8-18 NPTF	9/16-18 UNF-2B
PS810106-8-8	3.34" 84.9 mm	2.07" 52.6 mm	1.12" 28.6 mm	1.50" 36.5 mm	1/2-14 NPTF	3/4-16 UNF-2B
PS1210106-12-12	3.58" 91.0 mm	2.29" 58.2 mm	1.38" 35.0 mm	1.69" 42.9 mm	3/4-14 NPTF	1-1/16-12 UN-2B
PS1610106-16-16	3.84" 97.5 mm	2.36" 60.0 mm	1.62" 41.3 mm	1.88" 47.6 mm	1-11 1/2 NPTF	1-5/16-12 UN-2B

D Swivels

Swivels

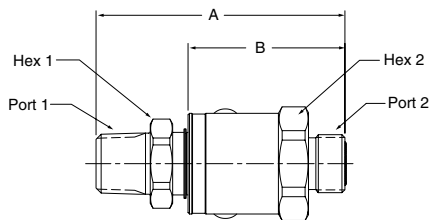
In-Line
PS Series

Male Pipe - Female SAE Straight Thread



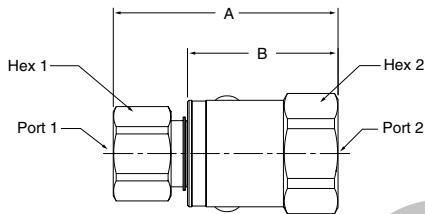
Part Number	A	B	Hex 1	Hex 2	Port 1	Port 2
PS410110-4-4	2.87" 72.9 mm	1.85" 47.0 mm	.75" 19.0 mm	1.19" 30.2 mm	1/4-18 NPTF	7/16-20 UNF-2B
PS610110-6-6	2.98" 75.6 mm	1.92" 48.8 mm	.88" 22.2 mm	1.31" 33.3 mm	3/8-18 NPTF	9/16-18 UNF-2B
PS810110-8-8	3.24" 82.2 mm	1.96" 50.0 mm	1.12" 28.6 mm	1.50" 36.5 mm	1/2-14 NPTF	3/4-16 UNF-2B
PS1210110-12-12	3.46" 87.8 mm	2.16" 55.0 mm	1.38" 35.0 mm	1.69" 42.9 mm	3/4-14 NPTF	1-1/16-12 UN-2B
PS1610110-16-16	3.74" 95.1 mm	2.26" 57.4 mm	1.62" 41.3 mm	1.88" 47.6 mm	1-11 1/2 NPTF	1-5/16-20 UN-2B

Male Pipe - O-Ring Face Seal



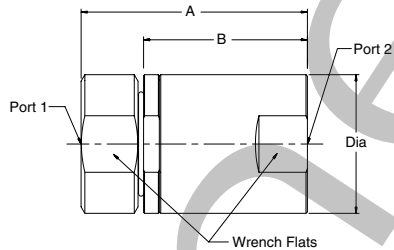
Part Number	A	B	Hex 1	Hex 2	Port 1	Port 2
PS4101JM-4-4	2.99" 76.0 mm	1.97" 50.0 mm	.75" 19.0 mm	1.19" 30.2 mm	1/4-18 NPTF	9/16-18 UNF-2A
PS6101JM-6-6	3.14" 79.6 mm	2.08" 52.8 mm	.88" 22.2 mm	1.31" 33.3 mm	3/8-18 NPTF	11/16-16 UN-2A
PS8101JM-8-8	3.44" 87.4 mm	2.17" 55.1 mm	1.12" 28.6 mm	1.50" 36.5 mm	1/2-14 NPTF	13/16-16 UN-2A
PS12101JM-12-12	3.65" 92.8 mm	2.36" 60.0 mm	1.38" 35.0 mm	1.69" 42.9 mm	3/4-14 NPTF	1-3/16-12 UN-2A
PS16101JM-16-16	3.84" 97.6 mm	2.36" 60.0 mm	1.62" 41.3 mm	1.88" 47.6 mm	1-11 1/2 NPTF	1-7/16-16 UN-2A

Female Pipe - Female Pipe



Part Number	A	B	Hex 1	Hex 2	Port 1	Port 2
PS410202-4-4	2.60" 66.1 mm	1.85" 47.0 mm	.75" 19.0 mm	1.19" 30.2 mm	1/4-18 NPTF	1/4-18 NPTF
PS610202-6-6	2.77" 70.4 mm	1.92" 48.8 mm	.88" 22.2 mm	1.31" 33.3 mm	3/8-18 NPTF	3/8-18 NPTF
PS810202-8-8	2.93" 74.4 mm	1.96" 50.0 mm	1.12" 28.6 mm	1.50" 36.5 mm	1/2-14 NPTF	1/2-14 NPTF
PS1210202-12-12	3.14" 79.6 mm	2.16" 55.0 mm	1.38" 35.0 mm	1.69" 42.9 mm	3/4-14 NPTF	3/4-14 NPTF
PS1610202-16-16	3.40" 86.2 mm	2.26" 57.4 mm	1.62" 41.3 mm	1.88" 47.6 mm	1-11 1/2 NPTF	1-11 1/2 NPTF

3 Piece Design

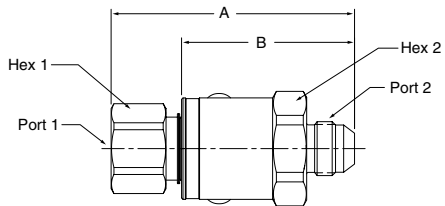


Part Number	A	B	Wrench Flats	Dia.	Port 1	Port 2
PS2410202-20-20	4.67" 118.6 mm	3.38" 85.9 mm	2.63" 66.7 mm	2.88" 73.0 mm	1 1/4-11 1/2 NPTF	1 1/4-11 1/2 NPTF
PS2410202-24-24	4.67" 118.6 mm	3.38" 85.9 mm	2.63" 66.7 mm	2.88" 73.0 mm	1 1/2-11 1/2 NPTF	1 1/2-11 1/2 NPTF
PS3210202-32-32	4.88" 123.9 mm	3.58" 90.8 mm	3.06" 77.6 mm	3.35" 85.1 mm	2-11 1/2 NPTF	2-11 1/2 NPTF

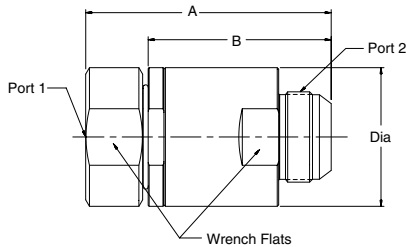
Swivels

In-Line
PS Series

Female Pipe - Male 37° Flare



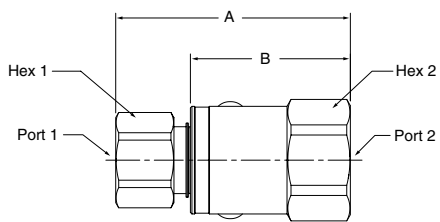
3 Piece Design



Part Number	A	B	Hex 1	Hex 2	Port 1	Port 2
PS410203-4-4	2.84" 72.0 mm	2.08" 53.0 mm	.75" 19.0 mm	1.19" 30.2 mm	1/4-18 NPTF	7/16-20 UNF-2A
PS610203-6-6	3.03" 76.9 mm	2.18" 55.2 mm	.88" 22.2 mm	1.31" 33.3 mm	3/8-18 NPTF	9/16-18 UNF-2A
PS810203-8-8	3.34" 84.9 mm	2.38" 60.3 mm	1.12" 28.6 mm	1.50" 36.5 mm	1/2-14 NPTF	3/4-16 UNF-2A
PS1210203-12-12	3.54" 89.9 mm	2.57" 65.3 mm	1.38" 35.0 mm	1.69" 42.9 mm	3/4-14 NPTF	1-1/16-12 UN-2A
PS1610203-16-16	3.74" 95.0 mm	2.60" 66.2 mm	1.62" 41.3 mm	1.88" 47.6 mm	1-11 1/2 NPTF	1-5/16-12 UN-2A

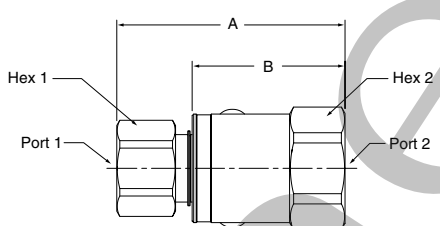
Part Number	A	B	Wrench Flats	Dia.	Port 1	Port 2
PS2410203-20-20	5.06" 128.6 mm	3.78" 95.9 mm	2.63" 66.7 mm	2.88" 73.0 mm	1 1/4-11 1/2 NPTF	1 5/8-12 UN-2A
PS2410203-24-24	5.06" 128.6 mm	3.78" 95.9 mm	2.63" 66.7 mm	2.88" 73.0 mm	1 1/2-11 1/2 NPTF	1 7/8-12 UN-2A
PS3210203-32-32	5.58" 141.7 mm	4.28" 108.6 mm	3.06" 77.6 mm	3.35" 85.1 mm	2-11 1/2 NPTF	2 1/2-12 UN-2A

Female Pipe - Female 37° Flare



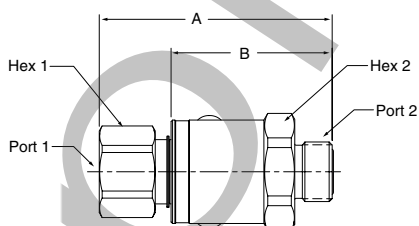
Part Number	A	B	Hex 1	Hex 2	Port 1	Port 2
PS410206-4-4	2.69" 68.4 mm	1.94" 49.3 mm	.75" 19.0 mm	1.19" 30.2 mm	1/4-18 NPTF	7/16-20 UNF-2B
PS610206-6-6	2.86" 72.5 mm	2.00" 50.9 mm	.88" 22.2 mm	1.31" 33.3 mm	3/8-18 NPTF	9/16-18 UNF-2B
PS810206-8-8	3.04" 77.1 mm	2.07" 52.6 mm	1.12" 28.6 mm	1.50" 36.5 mm	1/2-14 NPTF	3/4-16 UNF-2B
PS1210206-12-12	3.26" 82.8 mm	2.29" 58.2 mm	1.38" 35.0 mm	1.69" 42.9 mm	3/4-14 NPTF	1-1/16-12 UN-2B
PS1610206-16-16	3.49" 88.6 mm	2.36" 60.0 mm	1.62" 41.3 mm	1.88" 47.6 mm	1-11 1/2 NPTF	1-5/16-12 UN-2B

Female Pipe - Female SAE Straight Thread



Part Number	A	B	Hex 1	Hex 2	Port 1	Port 2
PS410210-4-4	2.60" 66.1 mm	1.85" 47.0 mm	.75" 19.0 mm	1.19" 30.2 mm	1/4-18 NPTF	7/16-20 UNF-2B
PS610210-6-6	2.77" 70.4 mm	1.92" 48.8 mm	.88" 22.2 mm	1.31" 33.3 mm	3/8-18 NPTF	9/16-18 UNF-2B
PS810210-8-8	2.93" 74.4 mm	1.96" 50.0 mm	1.12" 28.6 mm	1.50" 36.5 mm	1/2-14 NPTF	3/4-16 UNF-2B
PS1210210-12-12	3.14" 79.6 mm	2.16" 55.0 mm	1.38" 35.0 mm	1.69" 42.9 mm	3/4-14 NPTF	1-1/16-12 UN-2B
PS1610210-16-16	3.40" 86.2 mm	2.26" 57.4 mm	1.62" 41.3 mm	1.88" 47.6 mm	1-11 1/2 NPTF	1-5/16-20 UN-2B

Female Pipe - O-Ring Face Seal



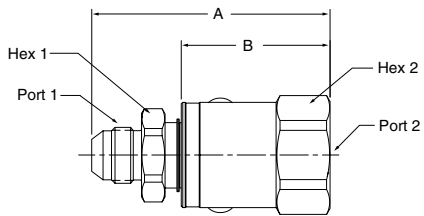
Part Number	A	B	Hex 1	Hex 2	Port 1	Port 2
PS4102JM-4-4	2.72" 69.1 mm	1.97" 50.0 mm	.75" 19.0 mm	1.19" 30.2 mm	1/4-18 NPTF	9/16-18 UNF-2A
PS6102JM-6-6	2.93" 74.4 mm	2.08" 52.8 mm	.88" 22.2 mm	1.31" 33.3 mm	3/8-18 NPTF	11/16-16 UN-2A
PS8102JM-8-8	3.14" 79.7 mm	2.17" 55.1 mm	1.12" 28.6 mm	1.50" 36.5 mm	1/2-14 NPTF	13/16-16 UN-2A
PS12102JM-12-12	3.33" 84.6 mm	2.36" 60.0 mm	1.38" 35.0 mm	1.69" 42.9 mm	3/4-14 NPTF	1-3/16-12 UN-2A
PS16102JM-16-16	3.50" 88.8 mm	2.36" 60.0 mm	1.62" 41.3 mm	1.88" 47.6 mm	1-11 1/2 NPTF	1-7/16-12 UN-2A

D Swivels

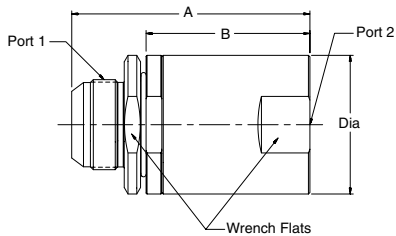
Swivels

In-Line
PS Series

Male 37° Flare - Female Pipe



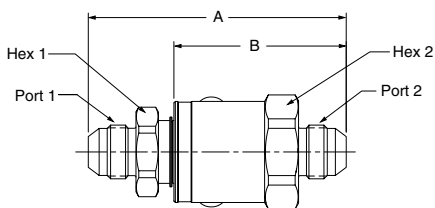
3 Piece Design



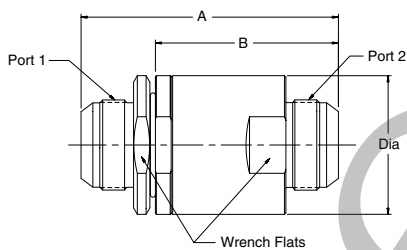
Part Number	A	B	Hex 1	Hex 2	Port 1	Port 2
PS410302-4-4	2.88" 72.9 mm	1.85" 47.0 mm	.75" 19.0 mm	1.19" 30.2 mm	7/16-20 UNF-2A	1/4-18 NPTF
PS610302-6-6	2.98" 75.6 mm	1.92" 48.8 mm	.88" 22.2 mm	1.31" 33.3 mm	9/16-18 UNF-2A	3/8-18 NPTF
PS810302-8-8	3.14" 79.8 mm	1.96" 50.0 mm	1.12" 28.6 mm	1.50" 36.5 mm	3/4-16 UNF-2A	1/2-14 NPTF
PS1210302-12-12	3.56" 90.5 mm	2.16" 55.0 mm	1.38" 35.0 mm	1.69" 42.9 mm	1-1/16-12 UN-2A	3/4-14 NPTF
PS1610302-16-16	3.74" 95.1 mm	2.26" 57.4 mm	1.62" 41.3 mm	1.88" 47.6 mm	1-5/16-12 UN-2A	1-11 1/2 NPTF

Part Number	A	B	Wrench Flats	Dia.	Port 1	Port 2
PS2410302-20-20	4.91" 124.8 mm	3.38" 85.9 mm	2.63" 66.7 mm	2.88" 73.0 mm	1 5/8-12 UN-2A	1 1/4-11 1/2 NPTF
PS2410302-24-24	4.91" 124.8 mm	3.38" 85.9 mm	2.63" 66.7 mm	2.88" 73.0 mm	1 7/8-12 UN-2A	1 1/2-11 1/2 NPTF
PS3210302-32-32	5.50" 139.8 mm	3.58" 90.8 mm	3.06" 77.6 mm	3.35" 85.1 mm	2 1/2-12 UN-2A	2-11 NPTF

Male 37° Flare - Male 37° Flare



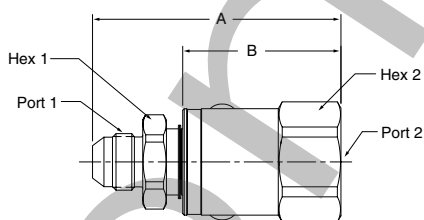
3 Piece Design



Part Number	A	B	Hex 1	Hex 2	Port 1	Port 2
PS410303-4-4	3.11" 78.9 mm	2.08" 53.0 mm	.75" 19.0 mm	1.19" 30.2 mm	7/16-20 UNF-2A	7/16-20 UNF-2A
PS610303-6-6	3.23" 82.0 mm	2.18" 55.2 mm	.88" 22.2 mm	1.31" 33.3 mm	9/16-18 UNF-2A	9/16-18 UNF-2A
PS810303-8-8	3.56" 90.3 mm	2.38" 60.3 mm	1.12" 28.6 mm	1.50" 36.5 mm	3/4-16 UNF-2A	3/4-16 UNF-2A
PS810303-10-10	3.76" 95.4 mm	2.48" 62.9 mm	1.12" 28.6 mm	1.50" 36.5 mm	7/8-14 UNF-2A	7/8-14 UNF-2A
PS1210303-12-12	3.97" 100.8 mm	2.57" 65.3 mm	1.38" 35.0 mm	1.69" 42.9 mm	1-1/16-12 UN-2A	1-1/16-12 UN-2A
PS1610303-16-16	4.09" 103.8 mm	2.60" 66.2 mm	1.62" 41.3 mm	1.88" 47.6 mm	1-5/16-12 UN-2A	1-5/16-12 UN-2A

Part Number	A	B	Wrench Flats	Dia.	Port 1	Port 2
PS2410303-20-20	5.31" 134.8 mm	3.78" 95.9 mm	2.63" 66.7 mm	2.88" 73.0 mm	1 5/8-12 UN-2A	1 5/8-12 UN-2A
PS2410303-24-24	5.31" 134.8 mm	3.78" 95.9 mm	2.63" 66.7 mm	2.88" 73.0 mm	1 7/8-12 UN-2A	1 7/8-12 UN-2A
PS3210303-32-32	6.20" 157.5 mm	4.28" 108.6 mm	3.06" 77.6 mm	3.35" 85.1 mm	2 1/2-12 UN-2A	2 1/2-12 UN-2A

Male 37° Flare - Female 37° Flare

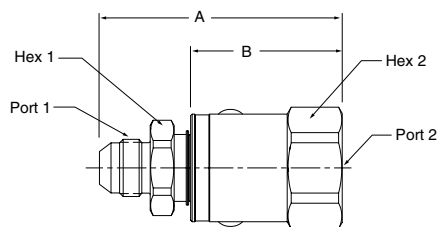


Part Number	A	B	Hex 1	Hex 2	Port 1	Port 2
PS410306-4-4	2.96" 75.2 mm	1.94" 49.3 mm	.75" 19.0 mm	1.19" 30.2 mm	7/16-20 UNF-2A	7/16-20 UNF-2B
PS610306-6-6	3.06" 77.7 mm	2.00" 50.9 mm	.88" 22.2 mm	1.31" 33.3 mm	9/16-18 UNF-2A	9/16-18 UNF-2B
PS810306-8-8	3.25" 82.6 mm	2.07" 52.6 mm	1.12" 28.6 mm	1.50" 36.5 mm	3/4-16 UNF-2A	3/4-16 UNF-2B
PS1210306-12-12	3.69" 93.6 mm	2.29" 58.2 mm	1.38" 35.0 mm	1.69" 42.9 mm	1-1/16-12 UN-2A	1-1/16-12 UN-2B
PS1610306-16-16	3.84" 97.5 mm	2.36" 60.0 mm	1.62" 41.3 mm	1.88" 47.6 mm	1-5/16-12 UN-2A	1-5/16-12 UN-2B

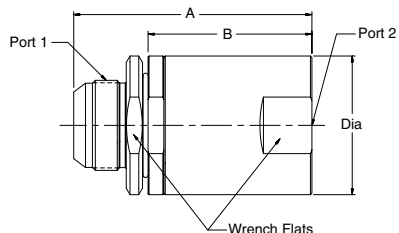
Swivels

In-Line
PS Series

Male 37° Flare - Female SAE Straight Thread



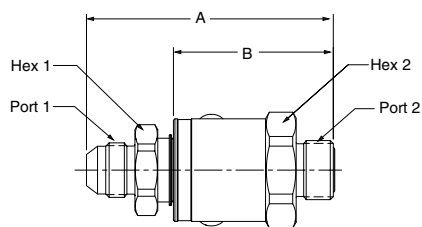
3 Piece Design



Part Number	A	B	Hex 1	Hex 2	Port 1	Port 2
PS410310-4-4	2.88" 72.9 mm	1.85" 47.0 mm	.75" 19.0 mm	1.19" 30.2 mm	7/16-20 UNF-2A	7/16-20 UNF-2B
PS610310-6-6	2.98" 75.6 mm	1.92" 48.8 mm	.88" 22.2 mm	1.31" 33.3 mm	9/16-18 UNF-2A	9/16-18 UNF-2B
PS810310-8-8	3.14" 79.8 mm	1.96" 50.0 mm	1.12" 28.6 mm	1.50" 36.5 mm	3/4-16 UNF-2A	3/4-16 UNF-2B
PS1210310-12-12	3.56" 90.5 mm	2.16" 55.0 mm	1.38" 35.0 mm	1.69" 42.9 mm	1-1/16-12 UN-2A	1-1/16-12 UN-2B
PS1610310-16-16	3.74" 95.1 mm	2.26" 57.4 mm	1.62" 41.3 mm	1.88" 47.6 mm	1-5/16-12 UN-2A	1-5/16-12 UN-2B

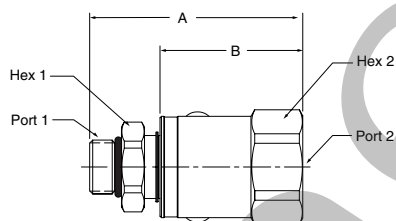
Part Number	A	B	C	D	Dia.	Wrench Flats	Port 1	Port 2
PS2410310-20-20	6.16" 150.2 mm	4.63" 117.5 mm	3.43" 87.0 mm	1.27" 32.3 mm	2.63" 66.7 mm	3.36" 85.2 mm	1 5/8-12 UN-2A	1 5/8-12 UN-2B
PS2410310-24-24	6.16" 150.2 mm	4.63" 117.5 mm	3.43" 87.0 mm	1.27" 32.3 mm	2.63" 66.7 mm	3.36" 85.2 mm	17/8-12 UN-2A	17/8-12 UN-2B
PS3210310-32-32	7.38" 187.4 mm	5.45" 138.4 mm	3.93" 99.7 mm	1.52" 38.5 mm	3.06" 77.6 mm	4.19" 106.4 mm	2 1/2-12 UN-2A	2-1/2-12 UN-2B

Male 37° Flare - O-Ring Face Seal



Part Number	A	B	Hex 1	Hex 2	Port 1	Port 2
PS4103JM-4-4	2.99" 76.0 mm	1.97" 50.0 mm	.75" 19.0 mm	1.19" 30.2 mm	7/16-20 UNF-2A	9/16-18 UNF-2A
PS6103JM-6-6	3.14" 79.6 mm	2.08" 52.8 mm	.88" 22.2 mm	1.31" 33.3 mm	9/16-18 UNF-2A	11/16-18 UNF-2A
PS8103JM-8-8	3.35" 85.1 mm	2.17" 55.1 mm	1.12" 28.6 mm	1.50" 36.5 mm	3/4-16 UNF-2A	13/16-16 UNF-2A
PS8103JM-10-10	3.56" 90.3 mm	2.28" 57.8 mm	1.12" 28.6 mm	1.50" 36.5 mm	7/8-14 UNF-2A	7/8-14 UNF-2A
PS12103JM-12-12	3.76" 95.4 mm	2.36" 60.0 mm	1.38" 35.0 mm	1.69" 42.9 mm	1-1/16-12 UN-2A	1-3/16-12 UN-2A
PS16103JM-16-16	3.84" 97.5 mm	2.36" 60.0 mm	1.62" 41.3 mm	1.88" 47.6 mm	1-5/16-12 UN-2A	1-7/16-12 UN-2A

Male SAE O-Ring Straight Thread - Female Pipe



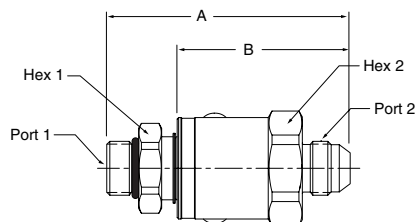
Part Number	A	B	Hex 1	Hex 2	Port 1	Port 2
PS410502-4-4	2.67" 67.8 mm	1.85" 47.0 mm	.75" 19.0 mm	1.19" 30.2 mm	7/16-20 UNF-2A	1/4-18 NPTF
PS610502-6-6	2.85" 72.5 mm	1.92" 48.8 mm	.88" 22.2 mm	1.31" 33.3 mm	9/16-18 UNF-2A	3/8-18 NPTF
PS810502-8-8	2.93" 74.4 mm	1.96" 50.0 mm	1.12" 28.6 mm	1.50" 36.5 mm	3/4-16 UN-2A	1/2-14 NPTF
PS1210502-12-12	3.29" 83.6 mm	2.16" 55.0 mm	1.38" 35.0 mm	1.69" 42.9 mm	1-1/16-12 UN-2A	3/4-14 NPTF
PS1610502-16-16	3.40" 86.2 mm	2.26" 57.4 mm	1.62" 41.3 mm	1.88" 47.6 mm	1-5/16-12 UN-2A	1-11/2 NPTF

D Swivels

Swivels

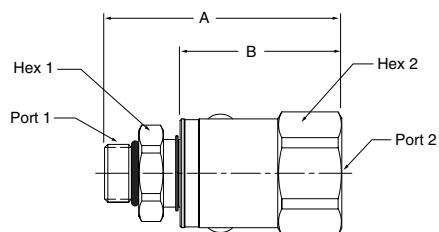
In-Line
PS Series

Male SAE O-Ring Straight Thread - Male 37° Flare



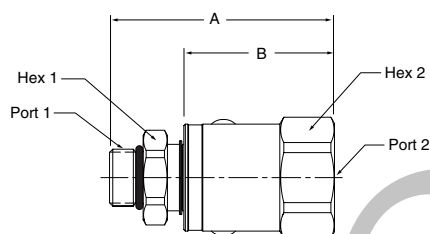
Part Number	A	B	Hex 1	Hex 2	Port 1	Port 2
PS410503-4-4	2.90" 73.7 mm	2.08" 53.0 mm	.75" 19.0 mm	1.19" 30.2 mm	7/16-20 UNF-2A	7/16-20 UNF-2A
PS610503-6-6	3.11" 78.9 mm	2.18" 55.2 mm	.88" 22.2 mm	1.31" 33.3 mm	9/16-18 UNF-2A	9/16-18 UNF-2A
PS810503-8-8	3.34" 84.9 mm	2.38" 60.3 mm	1.12" 28.6 mm	1.50" 36.5 mm	3/4-16 UNF-2A	3/4-16 UNF-2A
PS810503-10-10	3.50" 88.9 mm	2.48" 62.9 mm	1.12" 28.6 mm	1.50" 36.5 mm	7/8-14 UNF-2A	7/8-14 UNF-2A
PS1210503-12-12	3.70" 93.9 mm	2.57" 65.3 mm	1.38" 35.0 mm	1.69" 42.9 mm	1-1/16-12 UN-2A	1-1/16-12 UN-2A
PS1610503-16-16	3.74" 95.0 mm	2.60" 66.2 mm	1.62" 41.3 mm	1.88" 47.6 mm	1-5/16-12 UN-2A	1-5/16-12 UN-2A

Male SAE O-Ring Straight Thread - Female 37° Flare



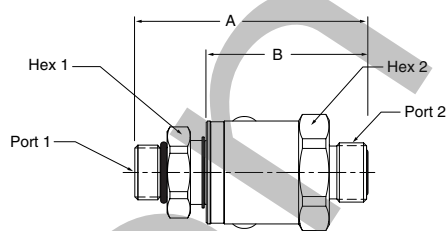
Part Number	A	B	Hex 1	Hex 2	Port 1	Port 2
PS410506-4-4	2.76" 70.0 mm	1.94" 49.3 mm	.75" 19.0 mm	1.19" 30.2 mm	7/16-20 UNF-2A	7/16-20 UNF-2B
PS610506-6-6	2.94" 74.6 mm	2.00" 50.9 mm	.88" 22.2 mm	1.31" 33.3 mm	9/16-18 UNF-2A	9/16-18 UNF-2B
PS810506-8-8	3.04" 77.1 mm	2.07" 52.6 mm	1.12" 28.6 mm	1.50" 36.5 mm	3/4-16 UNF-2A	3/4-16 UNF-2B
PS1210506-12-12	3.42" 86.8 mm	2.29" 58.2 mm	1.38" 35.0 mm	1.69" 42.9 mm	1-1/16-12 UN-2A	1-1/16-12 UN-2B
PS1610506-16-16	3.49" 88.6 mm	2.36" 60.0 mm	1.62" 41.3 mm	1.88" 47.6 mm	1-5/16-12 UN-2A	1-5/16-12 UN-2B

Male SAE O-Ring Straight Thread - Female SAE Straight Thread



Part Number	A	B	Hex 1	Hex 2	Port 1	Port 2
PS410510-4-4	2.67" 67.8 mm	1.85" 47.0 mm	.75" 19.0 mm	1.19" 30.2 mm	7/16-20 UNF-2A	7/16-20 UNF-2B
PS610510-6-6	2.85" 72.5 mm	1.92" 48.8 mm	.88" 22.2 mm	1.31" 33.3 mm	9/16-18 UNF-2A	9/16-18 UNF-2B
PS810510-8-8	2.93" 74.4 mm	1.96" 50.0 mm	1.12" 28.6 mm	1.50" 36.5 mm	3/4-16 UNF-2A	3/4-16 UNF-2B
PS1210510-12-12	3.29" 83.6 mm	2.16" 55.0 mm	1.38" 35.0 mm	1.69" 42.9 mm	1-1/16-12 UN-2A	1-1/16-12 UN-2B
PS1610510-16-16	3.40" 86.2 mm	2.26" 57.4 mm	1.62" 41.3 mm	1.88" 47.6 mm	1-5/16-12 UN-2A	1-5/16-12 UN-2B

Male SAE O-Ring Straight Thread - O-Ring Face Seal

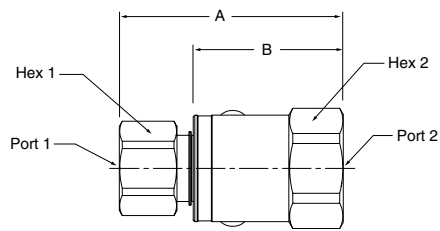


Part Number	A	B	Hex 1	Hex 2	Port 1	Port 2
PS4105JM-4-4	2.79" 70.8 mm	1.97" 50.0 mm	.75" 19.0 mm	1.19" 30.2 mm	7/16-20 UNF-2A	9/16-18 UNF-2A
PS6105JM-6-6	3.01" 76.5 mm	2.08" 52.8 mm	.88" 22.2 mm	1.31" 33.3 mm	9/16-18 UNF-2A	11/16-16 UNF-2A
PS8105JM-8-8	3.14" 79.7 mm	2.17" 55.1 mm	1.12" 28.6 mm	1.50" 36.5 mm	3/4-16 UNF-2A	13/16-16 UNF-2A
PS8105JM-10-10	3.30" 83.8 mm	2.28" 57.8 mm	1.12" 28.6 mm	1.50" 36.5 mm	7/8-14 UNF-2A	1-14 UNF-2A
PS12105JM-12-12	3.49" 88.6 mm	2.36" 60.0 mm	1.38" 35.0 mm	1.69" 42.9 mm	1-1/16-12 UN-2A	1-3/16-12 UN-2A
PS16105JM-16-16	3.50" 88.8 mm	2.36" 60.0 mm	1.62" 41.3 mm	1.88" 47.6 mm	1-5/16-12 UN-2A	1-7/16-12 UN-2A

Swivels

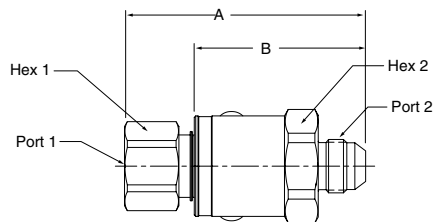
In-Line
PS Series

Female SAE Straight Thread - Female Pipe



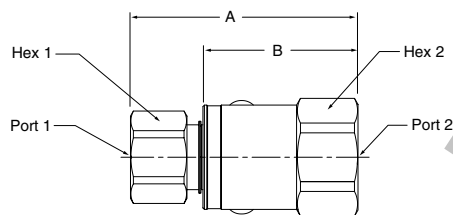
Part Number	A	B	Hex 1	Hex 2	Port 1	Port 2
PS411002-4-4	2.60" 66.1 mm	1.85" 47.0 mm	.75" 19.0 mm	1.19" 30.2 mm	7/16-20 UNF-2B	1/4-18 NPTF
PS611002-6-6	2.77" 70.4 mm	1.92" 48.8 mm	.88" 22.2 mm	1.31" 33.3 mm	9/16-18 UNF-2B	3/8-18 NPTF
PS811002-8-8	2.93" 74.4 mm	1.96" 50.0 mm	1.12" 28.6 mm	1.50" 36.5 mm	3/4-16 UNF-2B	1/2-14 NPTF
PS1211002-12-12	3.39" 86.2 mm	2.16" 55.0 mm	1.38" 35.0 mm	1.69" 42.9 mm	1-1/16-12 UN-2B	3/4-14 NPTF
PS1611002-16-16	3.52" 89.4 mm	2.26" 57.4 mm	1.62" 41.3 mm	1.88" 47.6 mm	1-5/16-12 UN-2B	1-11 1/2 NPTF

Female SAE Straight Thread - Male 37° Flare



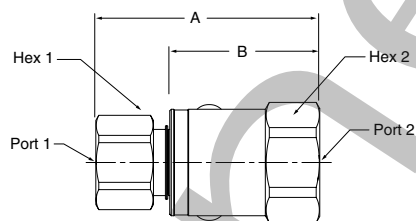
Part Number	A	B	Hex 1	Hex 2	Port 1	Port 2
PS411003-4-4	2.84" 72.0 mm	2.08" 53.0 mm	.75" 19.0 mm	1.19" 30.2 mm	7/16-20 UNF-2B	7/16-20 UNF-2A
PS611003-6-6	3.03" 76.9 mm	2.18" 55.2 mm	.88" 22.2 mm	1.31" 33.3 mm	9/16-18 UNF-2B	9/16-18 UNF-2A
PS811003-8-8	3.34" 84.9 mm	2.38" 60.3 mm	1.12" 28.6 mm	1.50" 36.5 mm	3/4-16 UNF-2B	3/4-16 UNF-2A
PS1211003-12-12	3.80" 96.5 mm	2.57" 65.3 mm	1.38" 35.0 mm	1.69" 42.9 mm	1-1/16-12 UN-2B	1-1/16-12 UN-2A
PS1611003-16-16	3.86" 98.1 mm	2.60" 66.2 mm	1.62" 41.3 mm	1.88" 47.6 mm	1-5/16-12 UN-2B	1-5/16-12 UN-2A

Female SAE Straight Thread - Female 37° Flare



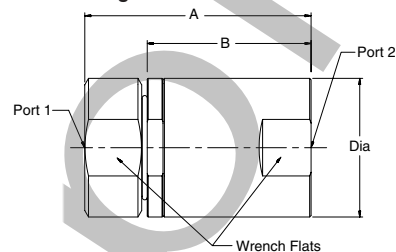
Part Number	A	B	Hex 1	Hex 2	Port 1	Port 2
PS411006-4-4	2.69" 68.4 mm	1.94" 49.3 mm	.75" 19.0 mm	1.19" 30.2 mm	7/16-20 UNF-2B	7/16-20 UNF-2B
PS611006-6-6	2.86" 72.5 mm	2.00" 50.9 mm	.88" 22.2 mm	1.31" 33.3 mm	9/16-18 UNF-2B	9/16-18 UNF-2B
PS811006-8-8	3.04" 77.1 mm	2.07" 52.6 mm	1.12" 28.6 mm	1.50" 36.5 mm	3/4-16 UNF-2B	3/4-16 UNF-2B
PS1211006-12-12	3.52" 89.4 mm	2.29" 58.2 mm	1.38" 35.0 mm	1.69" 42.9 mm	1-1/16-12 UN-2B	1-1/16-12 UN-2B
PS1611006-16-16	3.61" 91.8 mm	2.36" 60.0 mm	1.62" 41.3 mm	1.88" 47.6 mm	1-5/16-12 UN-2B	1-5/16-12 UN-2B

Female SAE Straight Thread - Female SAE Straight Thread



Part Number	A	B	Hex 1	Hex 2	Port 1	Port 2
PS411010-4-4	2.60" 66.1 mm	1.85" 47.0 mm	.75" 19.0 mm	1.19" 30.2 mm	7/16-20 UNF-2B	7/16-20 UNF-2B
PS611010-6-6	2.77" 70.4 mm	1.92" 48.8 mm	.88" 22.2 mm	1.31" 33.3 mm	9/16-18 UNF-2B	9/16-18 UNF-2B
PS811010-8-8	2.93" 74.4 mm	1.96" 50.0 mm	1.12" 28.6 mm	1.50" 36.5 mm	3/4-16 UNF-2B	3/4-16 UNF-2B
PS1211010-12-12	3.39" 86.2 mm	2.16" 55.0 mm	1.38" 35.0 mm	1.69" 42.9 mm	1-1/16-12 UN-2B	1-1/16-12 UN-2B
PS1611010-16-16	3.52" 89.4 mm	2.26" 57.4 mm	1.62" 41.3 mm	1.88" 47.6 mm	1-5/16-12 UN-2B	1-5/16-12 UN-2B

3 Piece Design



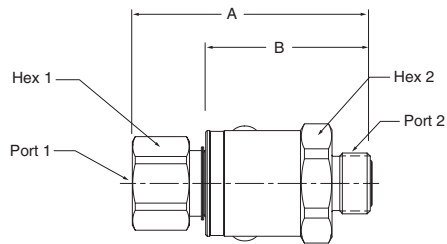
Part Number	A	B	C	D	Wrench Flats	Dia.	Port 1	Port 2
PS2411010-20-20	5.91" 150.2 mm	4.63" 117.5 mm	3.43" 87.0 mm	1.27" 32.3 mm	2.63" 66.7 mm	3.36" 85.2 mm	1 5/8-12 UN-2B	1 5/8-12 UN-2B
PS2411010-24-24	5.91" 150.2 mm	4.63" 117.5 mm	3.43" 87.0 mm	1.27" 32.3 mm	2.63" 66.7 mm	3.36" 85.2 mm	1 7/8-12 UN-2B	1 7/8-12 UN-2B
PS3211010-32-32	6.83" 173.6 mm	5.45" 138.4 mm	3.93" 99.7 mm	1.52" 38.5 mm	3.06" 77.6 mm	4.19" 106.4 mm	2 1/2-12 UN-2B	2-1/2-12 UN-2B

D Swivels

Swivels

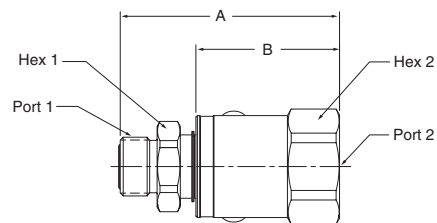
In-Line
PS Series

Female SAE Straight Thread - O-Ring Face Seal



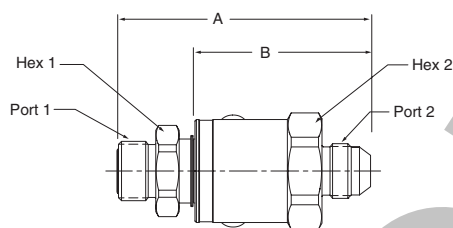
Part Number	A	B	Hex 1	Hex 2	Port 1	Port 2
PS4110JM-4-4	2.72" 69.1 mm	1.97" 50.0 mm	.75" 19.0 mm	1.19" 30.2 mm	7/16-20 UNF-2B	9/16-18 UNF-2A
PS6110JM-6-6	2.93" 74.4 mm	2.08" 52.8 mm	.88" 22.2 mm	1.31" 33.3 mm	9/16-18 UNF-2B	11/16-16 UN-2A
PS8110JM-8-8	3.14" 79.7 mm	2.17" 55.1 mm	1.12" 28.6 mm	1.50" 36.5 mm	3/4-16 UNF-2B	13/16-16 UN-2A
PS12110JM-12-12	3.59" 91.1 mm	2.36" 60.0 mm	1.38" 35.0 mm	1.69" 42.9 mm	1-1/16-12 UN-2B	1-3/16-12 UN-2A
PS16110JM-16-16	3.62" 91.9 mm	2.36" 60.0 mm	1.62" 41.3 mm	1.88" 47.6 mm	1-5/16-12 UN-2B	1-7/16-12 UN-2A

O-Ring Face Seal - Female Pipe



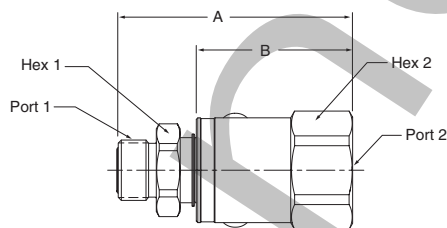
Part Number	A	B	Hex 1	Hex 2	Port 1	Port 2
PS41JM02-4-4	2.73" 69.2 mm	1.85" 47.0 mm	.75" 19.0 mm	1.19" 30.2 mm	9/16-18 UNF-2A	1/4-18 NPTF
PS61JM02-6-6	2.85" 72.5 mm	1.92" 48.8 mm	.88" 22.2 mm	1.31" 33.3 mm	11/16-16 UN-2A	3/8-18 NPTF
PS81JM02-8-8	3.00" 76.1 mm	1.96" 50.0 mm	1.12" 28.6 mm	1.50" 36.5 mm	13/16-16 UN-2A	1/2-14 NPTF
PS121JM02-12-12	3.39" 86.2 mm	2.16" 55.0 mm	1.38" 35.0 mm	1.69" 42.9 mm	1-3/16-12 UN-2A	3/4-14 NPTF
PS161JM02-16-16	3.52" 89.4 mm	2.26" 57.4 mm	1.62" 41.3 mm	1.88" 47.6 mm	1-7/16-12 UN-2A	1-11/2 NPTF

O-Ring Face Seal - Male 37° Flare



Part Number	A	B	Hex 1	Hex 2	Port 1	Port 2
PS41JM03-4-4	2.96" 75.2 mm	2.08" 53.0 mm	.75" 19.0 mm	1.19" 30.2 mm	9/16-18 UN-2A	7/16-20 UN-2A
PS61JM03-6-6	3.11" 78.9 mm	2.18" 55.2 mm	.88" 22.2 mm	1.31" 33.3 mm	11/16-16 UN-2A	9/16-18 UN-2A
PS81JM03-8-8	3.41" 86.6 mm	2.38" 60.3 mm	1.12" 28.6 mm	1.50" 36.5 mm	13/16-16 UN-2A	3/4-16 UN-2A
PS81JM03-10-10	3.61" 91.7 mm	2.48" 62.9 mm	1.12" 28.6 mm	1.50" 36.5 mm	1-14 UN-2A	7/8-14 UN-2A
PS121JM03-12-12	3.80" 96.5 mm	2.57" 65.3 mm	1.38" 35.0 mm	1.69" 42.9 mm	1-3/16-12 UNF-2A	1-1/16-12 UNF-2A
PS161JM03-16-16	3.86" 98.1 mm	2.60" 66.2 mm	1.62" 41.3 mm	1.88" 47.6 mm	1-7/16-12 UNF-2A	1-5/16-12 UNF-2A

O-Ring Face Seal - Female 37° Flare

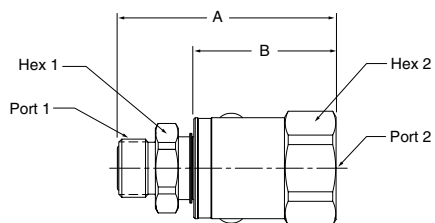


Part Number	A	B	Hex 1	Hex 2	Port 1	Port 2
PS41JM06-4-4	2.82" 71.5 mm	1.94" 49.3 mm	.75" 19.0 mm	1.19" 30.2 mm	9/16-18 UNF-2A	7/16-20 UNF-2B
PS61JM06-6-6	2.94" 74.6 mm	2.00" 50.9 mm	.88" 22.2 mm	1.31" 33.3 mm	11/16-16 UNF-2A	9/16-18 UNF-2B
PS81JM06-8-8	3.10" 78.8 mm	2.07" 52.6 mm	1.12" 28.6 mm	1.44" 36.5 mm	13/16-16 UNF-2A	3/4-16 UNF-2B
PS121JM06-12-12	3.52" 89.4 mm	2.29" 58.2 mm	1.38" 35.0 mm	1.69" 42.9 mm	1-3/16-12 UN-2A	1-1/16-12 UN-2B
PS161JM06-16-16	3.61" 91.8 mm	2.36" 60.0 mm	1.62" 41.3 mm	1.88" 47.6 mm	1-7/16-12 UN-2A	1-5/16-12 UN-2B

Swivels

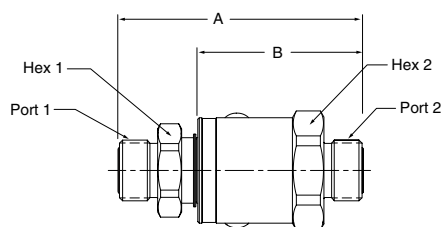
In-Line
PS Series

O-Ring Face Seal - Female SAE Straight Thread



Part Number	A	B	Hex 1	Hex 2	Port 1	Port 2
PS41JM10-4-4	2.73" 69.2 mm	1.85" 47.0 mm	.75" 19.0 mm	1.19" 30.2 mm	9/16-18 UNF-2A	7/16-20 UNF-2B
PS61JM10-6-6	2.85" 72.5 mm	1.92" 48.8 mm	.88" 22.2 mm	1.31" 33.3 mm	11/16-16 UN-2A	9/16-18 UNF-2B
PS81JM10-8-8	3.00" 76.1 mm	1.96" 50.0 mm	1.12" 28.6 mm	1.50" 36.5 mm	13/16-16 UN-2A	3/4-16 UNF-2B
PS121JM10-12-12	3.39" 86.2 mm	2.16" 55.0 mm	1.38" 35.0 mm	1.69" 42.9 mm	1-3/16-12 UN-2A	1-1/16-12 UN-2B
PS161JM10-16-16	3.52" 89.4 mm	2.26" 57.4 mm	1.62" 41.3 mm	1.88" 47.6 mm	1-7/16-12 UN-2A	1-5/16-12 UN-2B

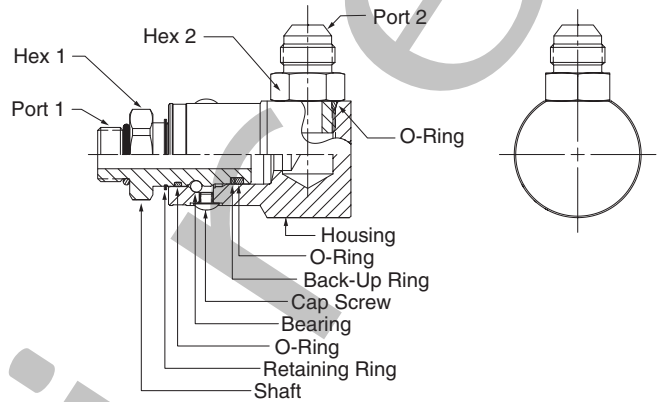
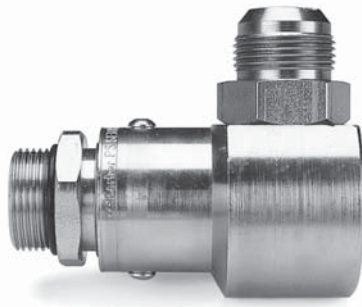
O-Ring Face Seal - O-Ring Face Seal



Part Number	A	B	Hex 1	Hex 2	Port 1	Port 2
PS41JMJM-4-4	2.85" 72.3 mm	1.97" 50.0 mm	.75" 19.0 mm	1.19" 30.2 mm	9/16-18 UNF-2A	9/16-18 UNF-2A
PS61JMJM-6-6	3.01" 76.5 mm	2.08" 52.8 mm	.88" 22.2 mm	1.31" 33.3 mm	11/16-16 UN-2A	11/16-16 UN-2A
PS81JMJM-8-8	3.20" 81.4 mm	2.17" 55.1 mm	1.12" 28.6 mm	1.50" 36.5 mm	13/16-16 UN-2A	13/16-16 UN-2A
PS81JMJM-10-10	3.41" 86.6 mm	2.28" 57.8 mm	1.12" 28.6 mm	1.50" 36.5 mm	1-14 UN-2A	1-14 UN-2A
PS121JMJM-12-12	3.59" 91.2 mm	2.36" 60.0 mm	1.38" 35.0 mm	1.69" 42.9 mm	1-3/16-12 UN-2A	1-3/16-12 UN-2A
PS161JMJM-16-16	3.62" 91.9 mm	2.36" 60.0 mm	1.62" 41.3 mm	1.88" 47.6 mm	1-7/16-12 UN-2A	1-7/16-12 UN-2A

Swivels

90°
PS Series

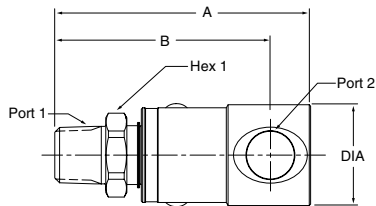


Materials Of Construction

- Housing*:Carbon Steel
- Shaft*:Carbon Steel
- Plating*:Zinc with Yellow Chromate
- Bearing*:Chrome
- O-Rings*:Buna-N
- Back-Up Ring:PTFE

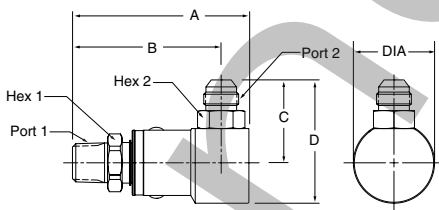
* See How-To-Order for optional material plating and seals.

Male Pipe - Female Pipe



Part Number	A	B	Dia.	Hex 1	Port 1	Port 2
PS490102-4-4	3.14" 79.7 mm	2.73" 69.4 mm	1.20" 30.5 mm	.75" 19.0 mm	1/4-18 NPTF	1/4-18 NPTF
PS690102-6-6	3.39" 86.1 mm	2.88" 73.2 mm	1.29" 32.8 mm	.88" 22.2 mm	3/8-18 NPTF	3/8-18 NPTF
PS890102-8-8	3.76" 95.6 mm	3.17" 80.6 mm	1.49" 37.8 mm	1.12" 28.6 mm	1/2-14 NPTF	1/2-14 NPTF
PS1290102-12-12	4.10" 104.2 mm	3.43" 87.2 mm	1.76" 44.6 mm	1.38" 35.0 mm	3/4-14 NPTF	3/4-14 NPTF
PS1690102-16-16	4.67" 118.7 mm	3.81" 96.7 mm	2.16" 54.9 mm	1.62" 41.3 mm	1-11 1/2 NPTF	1-11 1/2 NPTF

Male Pipe - Male 37° Flare

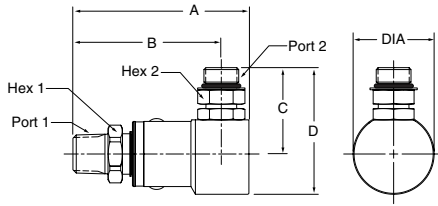


Part Number	A	B	C	D	Dia	Hex 1	Hex 2	Port 1	Port 2
PS490103-4-4	3.14" 79.7 mm	2.73" 69.4 mm	1.39" 35.2 mm	1.99" 50.5 mm	1.20" 30.5 mm	.75" 19.0 mm	.56" 14.3 mm	1/4-18 NPTF	7/16-20 UNF-2A
PS690103-6-6	3.39" 86.1 mm	2.88" 73.2 mm	1.44" 36.6 mm	2.09" 53.0 mm	1.29" 32.8 mm	.88" 22.2 mm	.69" 17.5 mm	3/8-18 NPTF	9/16-18 UNF-2A
PS890103-8-8	3.76" 95.6 mm	3.17" 80.6 mm	1.78" 45.1 mm	2.64" 67.1 mm	1.73" 44.0 mm	1.12" 28.6 mm	.88" 22.2 mm	1/2-14 NPTF	3/4-16 UNF-2A
PS1290103-12-12	4.10" 104.2 mm	3.43" 87.2 mm	2.24" 56.9 mm	3.86" 85.3 mm	2.17" 55.2 mm	1.38" 35.0 mm	1.25" 31.8 mm	3/4-14 NPTF	1-1/16-12 UN-2A
PS1690103-16-16	4.67" 118.7 mm	3.81" 96.7 mm	2.42" 61.3 mm	3.66" 92.9 mm	2.48" 63.0 mm	1.62" 41.3 mm	1.50" 38.1 mm	1-11 1/2 NPTF	1-5/16-12 UN-2A

Swivels

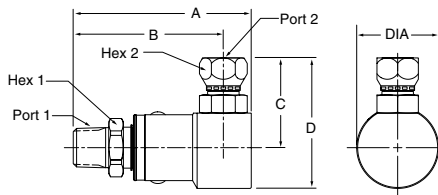
90°
PS Series

Male Pipe - Male SAE O-Ring Straight Thread



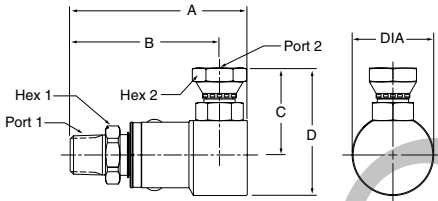
Part Number	A	B	C	D	Dia.	Hex 1	Hex 2	Port 1	Port 2
PS490105-4-4	3.14" 79.7 mm	2.73" 69.4 mm	1.38" 35.0 mm	1.98" 50.2 mm	1.20" 30.5 mm	.75" 19.0 mm	.56" 14.3 mm	1/4-18 NPTF	7/16-20 UNF-2A
PS690105-6-6	3.39" 86.1 mm	2.88" 73.2 mm	1.55" 39.4 mm	2.20" 55.8 mm	1.29" 32.8 mm	.88" 22.2 mm	.69" 17.5 mm	3/8-18 NPTF	9/16-18 UNF-2A
PS890105-8-8	3.76" 95.6 mm	3.17" 80.6 mm	1.86" 47.2 mm	2.72" 69.2 mm	1.73" 44.0 mm	1.12" 28.6 mm	.88" 22.2 mm	1/2-14 NPTF	3/4-16 UNF-2A
PS1290105-12-12	4.10" 104.2 mm	3.43" 87.2 mm	2.40" 61.0 mm	3.49" 88.5 mm	2.17" 55.2 mm	1.38" 35.0 mm	1.25" 31.8 mm	3/4-14 NPTF	1-1/16-12 UN-2A
PS1690105-16-16	4.67" 118.7 mm	3.81" 96.7 mm	2.50" 63.4 mm	3.74" 94.9 mm	2.48" 63.0 mm	1.62" 41.3 mm	1.50" 38.1 mm	1-11/2 NPTF	1-5/16-12 UN-2A

Male Pipe - Female 37° Flare



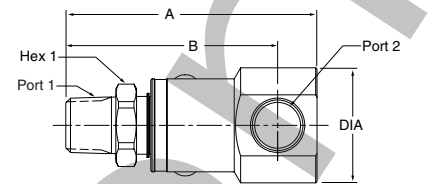
Part Number	A	B	C	D	Dia.	Hex 1	Hex 2	Port 1	Port 2
PS490106-4-4	3.14" 79.7 mm	2.73" 69.4 mm	1.47" 37.3 mm	2.07" 52.5 mm	1.20" 30.5 mm	.75" 19.0 mm	.56" 14.3 mm	1/4-18 NPTF	7/16-20 UNF-2B
PS690106-6-6	3.39" 86.1 mm	2.88" 73.2 mm	1.57" 39.9 mm	2.22" 56.3 mm	1.29" 32.8 mm	.88" 22.2 mm	.69" 17.5 mm	3/8-18 NPTF	9/16-18 UNF-2B
PS890106-8-8	3.76" 95.6 mm	3.17" 80.6 mm	1.91" 48.4 mm	2.77" 70.4 mm	1.73" 44.0 mm	1.12" 28.6 mm	.88" 22.2 mm	1/2-14 NPTF	3/4-16 UNF-2B
PS1290106-12-12	4.10" 104.2 mm	3.43" 87.2 mm	2.34" 59.4 mm	3.43" 87.0 mm	2.17" 55.2 mm	1.38" 35.0 mm	1.25" 31.8 mm	3/4-14 NPTF	1-1/16-12 UN-2B
PS1690106-16-16	4.67" 118.7 mm	3.81" 96.7 mm	2.54" 64.6 mm	3.79" 96.2 mm	2.48" 63.0 mm	1.62" 41.3 mm	1.50" 38.1 mm	1-11/2 NPTF	1-5/16-12 UN-2B

Male Pipe - Female NPSM Pipe Swivel



Part Number	A	B	C	D	Dia.	Hex 1	Hex 2	Port 1	Port 2
PS490107-4-4	3.14" 79.7 mm	2.73" 69.4 mm	1.48" 37.5 mm	2.08" 52.8 mm	1.20" 30.5 mm	.75" 19.0 mm	.69" 17.4 mm	1/4-18 NPTF	1/4-18 NPSM
PS690107-6-6	3.39" 86.1 mm	2.88" 73.2 mm	1.51" 38.4 mm	2.16" 54.8 mm	1.29" 32.8 mm	.88" 22.2 mm	.88" 22.2 mm	3/8-18 NPTF	3/8-18 NPSM
PS890107-8-8	3.76" 95.6 mm	3.17" 80.6 mm	1.86" 47.2 mm	2.72" 69.2 mm	1.73" 44.0 mm	1.12" 28.6 mm	1.00" 25.4 mm	1/2-14 NPTF	1/2-14 NPSM
PS1290107-12-12	4.10" 104.2 mm	3.43" 87.2 mm	2.24" 56.9 mm	3.33" 84.5 mm	2.17" 55.2 mm	1.38" 35.0 mm	1.25" 31.8 mm	3/4-14 NPTF	3/4-14 NPSM
PS1690107-16-16	4.67" 118.7 mm	3.81" 96.7 mm	2.48" 63.1 mm	3.73" 94.6 mm	2.48" 63.0 mm	1.62" 41.3 mm	1.50" 38.1 mm	1-11/2 NPTF	1-11/2 NPSM

Male Pipe - Female SAE Straight Thread



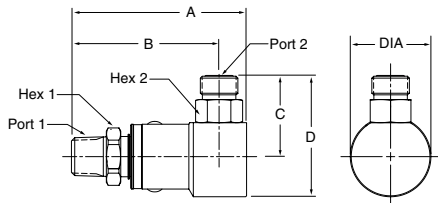
Part Number	A	B	Dia.	Hex 1	Port 1	Port 2
PS490110-4-4	3.14" 79.7 mm	2.73" 69.4 mm	1.20" 30.5 mm	.75" 19.0 mm	1/4-18 NPTF	7/16-20 UNF-2B
PS690110-6-6	3.39" 86.1 mm	2.88" 73.2 mm	1.29" 32.8 mm	.88" 22.2 mm	3/8-18 NPTF	9/16-18 UNF-2B
PS890110-8-8	3.76" 95.6 mm	3.17" 80.6 mm	1.73" 44.0 mm	1.12" 28.6 mm	1/2-14 NPTF	3/4-16 UNF-2B
PS1290110-12-12	4.10" 104.2 mm	3.43" 87.2 mm	2.17" 55.2 mm	1.38" 35.0 mm	3/4-14 NPTF	1-1/16-12 UN-2B
PS1690110-16-16	4.67" 118.7 mm	3.81" 96.7 mm	2.48" 63.0 mm	1.62" 41.3 mm	1-11/2 NPTF	1-5/16-12 UN-2B

D Swivels

Swivels

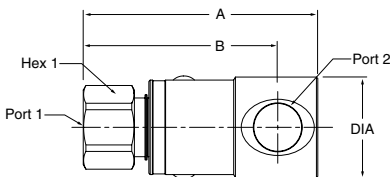
90°
PS Series

Male Pipe - O-Ring Face Seal



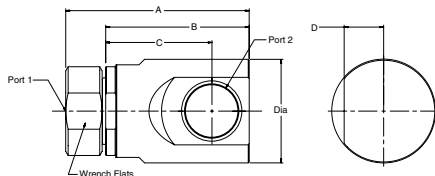
Part Number	A	B	C	D	Dia.	Hex 1	Hex 2	Port 1	Port 2
PS4901JM-4-4	3.14" 79.7 mm	2.73" 69.4 mm	1.29" 32.5 mm	1.89" 47.9 mm	1.20" 30.5 mm	.75" 19.0 mm	.56" 14.3 mm	1/4-18 NPTF	9/16-18 UNF-2A
PS6901JM-6-6	3.39" 86.1 mm	2.88" 73.2 mm	1.40" 35.6 mm	2.05" 52.0 mm	1.29" 32.8 mm	.88" 22.2 mm	.69" 17.5 mm	3/8-18 NPTF	11/16-16 UN-2A
PS8901JM-8-8	3.76" 95.6 mm	3.17" 80.6 mm	1.74" 44.1 mm	2.60" 66.1 mm	1.73" 44.0 mm	1.12" 28.6 mm	.88" 22.2 mm	1/2-14 NPTF	13/16-16 UN-2A
PS12901JM-12-12	4.10" 104.2 mm	3.43" 87.2 mm	2.18" 55.4 mm	3.27" 83.0 mm	2.17" 55.2 mm	1.38" 35.0 mm	1.25" 31.8 mm	3/4-14 NPTF	1-3/16-12 UN-2A
PS16901JM-16-16	4.67" 118.7 mm	3.81" 96.7 mm	2.34" 59.6 mm	3.59" 91.1 mm	2.48" 63.0 mm	1.62" 41.3 mm	1.50" 38.1 mm	1-11/2 NPTF	1-7/16-12 UN-2A

Female Pipe - Female Pipe



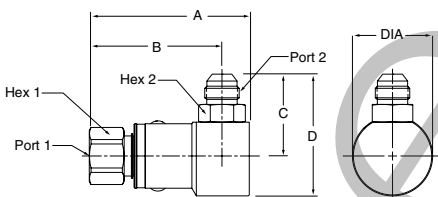
Part Number	A	B	Dia	Hex 1	Port 1	Port 2
PS490202-4-4	2.87" 72.8 mm	2.46" 62.5 mm	1.20" 30.5 mm	.75" 19.0 mm	1/4-18 NPTF	1/4-18 NPTF
PS690202-6-6	3.19" 80.9 mm	2.68" 68.0 mm	1.29" 32.8 mm	.88" 22.2 mm	3/8-18 NPTF	3/8-18 NPTF
PS890202-8-8	3.46" 87.8 mm	2.87" 72.8 mm	1.49" 37.8 mm	1.12" 28.6 mm	1/2-14 NPTF	1/2-14 NPTF
PS1290202-12-12	3.78" 96.0 mm	3.11" 79.0 mm	1.76" 44.6 mm	1.38" 35.0 mm	3/4-14 NPTF	3/4-14 NPTF
PS1690202-16-16	4.32" 109.8 mm	3.46" 87.9 mm	2.16" 54.9 mm	1.62" 41.3 mm	1-11/2 NPTF	1-11/2 NPTF

3 Piece Design



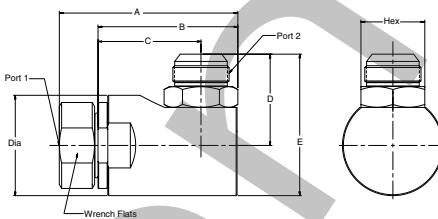
Part Number	A	B	C	D	Wrench Flats	Dia.	Port 1	Port 2
PS2490202-20-20	5.91" 150.2 mm	4.63" 117.5 mm	3.43" 87.0 mm	1.27" 32.3 mm	2.63" 66.7 mm	3.36" 85.2 mm	1 1/4-11 1/2 NPTF	1 1/4-11 1/2 NPTF
PS2490202-24-24	5.91" 150.2 mm	4.63" 117.5 mm	3.43" 87.0 mm	1.27" 32.3 mm	2.63" 66.7 mm	3.36" 85.2 mm	1 1/2-11 1/2 NPTF	1 1/2-11 1/2 NPTF
PS3290202-32-32	6.75" 171.5 mm	5.45" 138.4 mm	3.93" 99.7 mm	1.52" 38.5 mm	3.06" 77.6 mm	4.19" 106.4 mm	2 11-1/2 NPTF	2 11-1/2 NPTF

Female Pipe - Male 37° Flare



Part Number	A	B	C	D	Dia	Hex 1	Hex 2	Port 1	Port 2
PS490203-4-4	2.87" 72.8 mm	2.46" 62.5 mm	1.39" 35.2 mm	1.99" 50.5 mm	1.20" 30.5 mm	.75" 19.0 mm	.56" 14.3 mm	1/4-18 NPTF	7/16-20 UNF-2A
PS690203-6-6	3.19" 80.9 mm	2.68" 68.0 mm	1.44" 36.6 mm	2.09" 53.0 mm	1.29" 32.8 mm	.88" 22.2 mm	.69" 17.5 mm	3/8-18 NPTF	9/16-18 UNF-2A
PS890203-8-8	3.46" 87.8 mm	2.87" 72.8 mm	1.78" 45.1 mm	2.64" 67.1 mm	1.73" 44.0 mm	1.12" 28.6 mm	.88" 22.2 mm	1/2-14 NPTF	3/4-16 UNF-2A
PS1290203-12-12	3.78" 96.0 mm	3.11" 79.0 mm	2.24" 56.9 mm	3.86" 85.3 mm	2.17" 55.2 mm	1.38" 35.0 mm	1.25" 31.8 mm	3/4-14 NPTF	1-1/16-12 UN-2A
PS1690203-16-16	4.32" 109.8 mm	3.46" 87.9 mm	2.42" 61.3 mm	3.66" 92.9 mm	2.48" 63.0 mm	1.62" 41.3 mm	1.50" 38.1 mm	1-11/2 NPTF	1-5/16-12 UN-2A

3 Piece Design



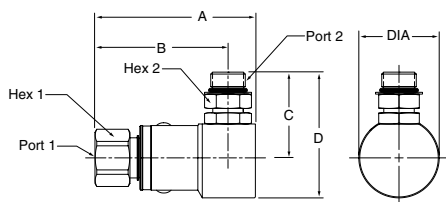
Part Number	A	B	C	D	E	Hex	Wrench Flats	Dia.	Port 1	Port 2
PS2490203-20-20	5.91" 150.2 mm	4.63" 117.5 mm	3.43" 87.0 mm	2.85" 72.4 mm	4.53" 115.0 mm	1.88" 47.6 mm	2.63" 66.7 mm	3.36" 85.2 mm	1 1/4-11 1/2 NPTF	1 5/8-12 UN-2A
PS2490203-24-24	5.94" 150.9 mm	4.65" 118.2 mm	3.43" 87.0 mm	3.05" 77.6 mm	4.73" 120.2 mm	2.13" 54.0 mm	2.63" 66.7 mm	3.36" 85.2 mm	1 1/2-11 1/2 NPTF	1 7/8-12 UN-2A
PS3290203-32-32	6.82" 173.1 mm	5.51" 140.0 mm	3.93" 99.7 mm	3.70" 94.0 mm	5.80" 147.2 mm	2.75" 69.8 mm	3.06" 77.6 mm	4.19" 106.4 mm	2 11-1/2 NPTF	2 1/2-12 UN-2A

D Swivels

Swivels

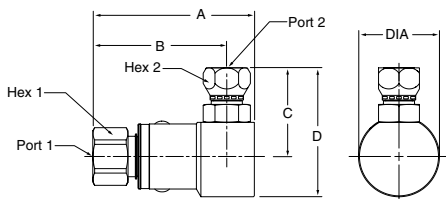
90°
PS Series

Female Pipe - Male SAE O-Ring Straight Thread



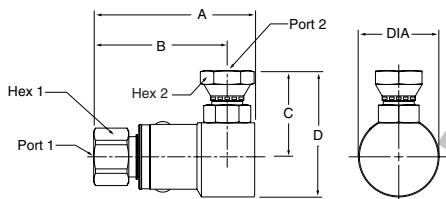
Part Number	A	B	C	D	Dia.	Hex 1	Hex 2	Port 1	Port 2
PS490205-4-4	2.87" 72.8 mm	2.46" 62.5 mm	1.38" 35.0 mm	1.98" 50.2 mm	1.20" 30.5 mm	.75" 19.0 mm	.56" 14.3 mm	1/4-18 NPTF	7/16-20 UNF-2A
PS690205-6-6	3.19" 80.9 mm	2.68" 68.0 mm	1.55" 39.4 mm	2.20" 55.8 mm	1.29" 32.8 mm	.88" 22.2 mm	.69" 17.5 mm	3/8-18 NPTF	9/16-18 UNF-2A
PS890205-8-8	3.46" 87.8 mm	2.87" 72.8 mm	1.86" 47.2 mm	2.72" 69.2 mm	1.73" 44.0 mm	1.12" 28.6 mm	.88" 22.2 mm	1/2-14 NPTF	3/4-16 UNF-2A
PS1290205-12-12	3.78" 96.0 mm	3.11" 79.0 mm	2.40" 61.0 mm	3.49" 88.5 mm	2.17" 55.2 mm	1.38" 35.0 mm	1.25" 31.8 mm	3/4-14 NPTF	1-1/16-12 UN-2A
PS1690205-16-16	4.32" 109.8 mm	3.46" 87.9 mm	2.50" 63.4 mm	3.74" 94.9 mm	2.48" 63.0 mm	1.62" 41.3 mm	1.50" 38.1 mm	1-11/2 NPTF	1-5/16-12 UN-2A

Female Pipe - Female 37° Flare



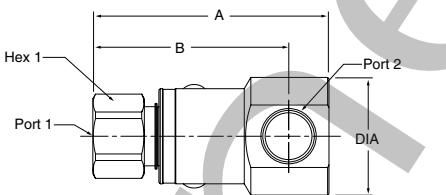
Part Number	A	B	C	D	Dia.	Hex 1	Hex 2	Port 1	Port 2
PS490206-4-4	2.87" 72.8 mm	2.46" 62.5 mm	1.47" 37.3 mm	2.07" 52.5 mm	1.20" 30.5 mm	.75" 19.0 mm	.56" 14.3 mm	1/4-18 NPTF	7/16-20 UNF-2A
PS690206-6-6	3.19" 80.9 mm	2.68" 68.0 mm	1.57" 39.9 mm	2.22" 56.3 mm	1.29" 32.8 mm	.88" 22.2 mm	.69" 17.5 mm	3/8-18 NPTF	9/16-18 UNF-2A
PS890206-8-8	3.46" 87.8 mm	2.87" 72.8 mm	1.91" 48.4 mm	2.77" 70.4 mm	1.73" 44.0 mm	1.12" 28.6 mm	.88" 22.2 mm	1/2-14 NPTF	3/4-16 UNF-2A
PS1290206-12-12	3.78" 96.0 mm	3.11" 79.0 mm	2.34" 59.4 mm	3.43" 87.0 mm	2.17" 55.2 mm	1.38" 35.0 mm	1.25" 31.8 mm	3/4-14 NPTF	1-1/16-12 UN-2A
PS1690206-16-16	4.32" 109.8 mm	3.46" 87.9 mm	2.54" 64.6 mm	3.79" 96.2 mm	2.48" 63.0 mm	1.62" 41.3 mm	1.50" 38.1 mm	1-11/2 NPTF	1-5/16-12 UN-2A

Female Pipe - Female NPSM Pipe Swivel



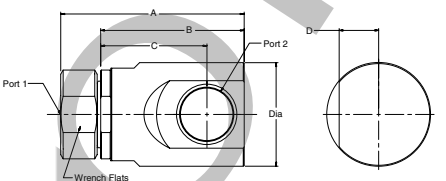
Part Number	A	B	C	D	Dia.	Hex 1	Hex 2	Port 1	Port 2
PS490207-4-4	2.87" 72.8 mm	2.46" 62.5 mm	1.48" 37.5 mm	2.08" 52.8 mm	1.20" 30.5 mm	.75" 19.0 mm	.69" 17.4 mm	1/4-18 NPTF	1/4-18 NPSM
PS690207-6-6	3.19" 80.9 mm	2.68" 68.0 mm	1.51" 38.4 mm	2.16" 54.8 mm	1.29" 32.8 mm	.88" 22.2 mm	.69" 17.5 mm	3/8-18 NPTF	3/8-18 NPSM
PS890207-8-8	3.46" 87.8 mm	2.87" 72.8 mm	1.86" 47.2 mm	2.72" 69.2 mm	1.73" 44.0 mm	1.12" 28.6 mm	1.00" 25.4 mm	1/2-14 NPTF	1/2-14 NPSM
PS1290207-12-12	3.78" 96.0 mm	3.11" 79.0 mm	2.24" 56.9 mm	3.33" 84.5 mm	2.17" 55.2 mm	1.38" 35.0 mm	1.25" 31.8 mm	3/4-14 NPTF	3/4-14 NPSM
PS1690207-16-16	4.32" 109.8 mm	3.46" 87.9 mm	2.48" 63.1 mm	3.73" 94.6 mm	2.48" 63.0 mm	1.62" 41.3 mm	1.50" 38.1 mm	1-11/2 NPTF	1-11/2 NPSM

Female Pipe - Female SAE Straight Thread



Part Number	A	B	Dia.	Hex 1	Port 1	Port 2
PS490210-4-4	2.87" 72.8 mm	2.46" 62.5 mm	1.20" 30.5 mm	.75" 19.0 mm	1/4-18 NPTF	7/16-20 UNF-2B
PS690210-6-6	3.19" 80.9 mm	2.68" 68.0 mm	1.29" 32.8 mm	.88" 22.2 mm	3/8-18 NPTF	9/16-18 UNF-2B
PS890210-8-8	3.46" 87.8 mm	2.87" 72.8 mm	1.73" 44.0 mm	1.12" 28.6 mm	1/2-14 NPTF	3/4-16 UNF-2B
PS1290210-12-12	3.78" 96.0 mm	3.11" 79.0 mm	2.17" 55.2 mm	1.38" 35.0 mm	3/4-14 NPTF	1-1/16-12 UN-2B
PS1690210-16-16	4.32" 109.8 mm	3.46" 87.9 mm	2.48" 63.0 mm	1.62" 41.3 mm	1-11/2 NPTF	1-5/16-12 UN-2B

3 Piece Design

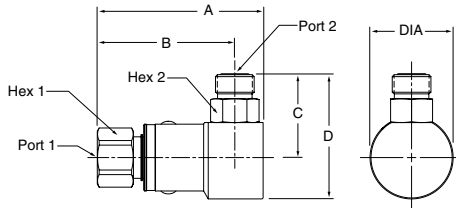


Part Number	A	B	C	D	Wrench Flats	Dia.	Port 1	Port 2
PS2490210-20-20	5.91" 150.2 mm	4.63" 117.5 mm	3.43" 87.0 mm	1.27" 32.3 mm	2.63" 66.7 mm	3.36" 85.2 mm	1 1/4-11 1/2 NPTF	1 5/8-12 UN-2B
PS2490210-24-24	5.91" 150.2 mm	4.63" 117.5 mm	3.43" 87.0 mm	1.27" 32.3 mm	2.63" 66.7 mm	3.36" 85.2 mm	1 1/4-11 1/2 NPTF	1 5/8-12 UN-2B
PS3290210-32-32	6.75" 171.5 mm	5.45" 138.4 mm	3.93" 99.7 mm	1.52" 38.5 mm	3.06" 77.6 mm	4.19" 106.4 mm	2 11/2 NPTF	2-1/2-12 UN-2B

Swivels

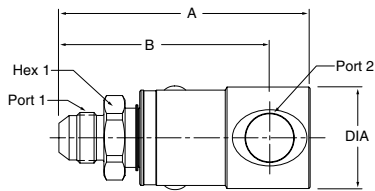
90°
PS Series

Female Pipe - O-Ring Face Seal



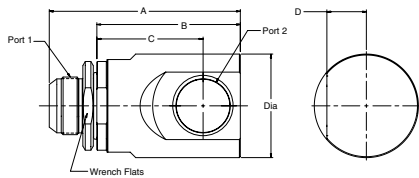
Part Number	A	B	C	D	Dia.	Hex 1	Hex 2	Port 1	Port 2
PS4902JM-4-4	2.87" 72.8 mm	2.46" 62.5 mm	1.29" 32.5 mm	1.89" 47.9 mm	1.20" 30.5 mm	.75" 19.0 mm	.56" 14.3 mm	1/4-18 NPTF	9/16-18 UNF-2A
PS6902JM-6-6	3.19" 80.9 mm	2.68" 68.0 mm	1.40" 35.6 mm	2.05" 52.0 mm	1.29" 32.8 mm	.88" 22.2 mm	.69" 17.5 mm	3/8-18 NPTF	11/16-16 UN-2A
PS8902JM-8-8	3.46" 87.8 mm	2.87" 72.8 mm	1.74" 44.1 mm	2.60" 66.1 mm	1.73" 44.0 mm	1.12" 28.6 mm	.88" 22.2 mm	1/2-14 NPTF	13/16-16 UN-2A
PS12902JM-12-12	3.78" 96.0 mm	3.11" 79.0 mm	2.18" 55.4 mm	3.27" 83.0 mm	2.17" 55.2 mm	1.38" 35.0 mm	1.25" 31.8 mm	3/4-14 NPTF	1-3/16-12 UN-2A
PS16902JM-16-16	4.32" 109.8 mm	3.46" 87.9 mm	2.34" 59.6 mm	3.59" 91.1 mm	2.48" 63.0 mm	1.62" 41.3 mm	1.50" 38.1 mm	1-11/2 NPTF	1-7/16-12 UN-2A

Male 37° Flare - Female Pipe



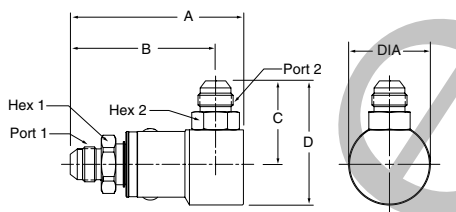
Part Number	A	B	Dia.	Hex 1	Port 1	Port 2
PS490302-4-4	3.14" 79.7 mm	2.73" 69.4 mm	1.20" 30.5 mm	.75" 19.0 mm	7/16-20 UNF-2A	1/4-18 NPTF
PS690302-6-6	3.39" 86.1 mm	2.88" 73.2 mm	1.29" 32.8 mm	.88" 22.2 mm	9/16-18 UNF-2A	3/8-18 NPTF
PS890302-8-8	3.67" 93.2 mm	3.08" 78.2 mm	1.49" 37.8 mm	1.12" 28.6 mm	3/4-16 UNF-2A	1/2-14 NPTF
PS1290302-12-12	4.21" 106.8 mm	3.54" 89.8 mm	1.76" 44.6 mm	1.38" 35.0 mm	1-1/16-12 UN-2A	3/4-14 NPTF
PS1690302-16-16	4.67" 118.7 mm	3.81" 97.0 mm	2.16" 54.9 mm	1.62" 41.3 mm	1-5/16-12 UN-2A	1-11/2 NPTF

3 Piece Design



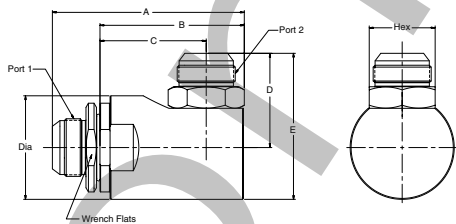
Part Number	A	B	C	D	Wrench Flats	Dia.	Port 1	Port 2
PS2490302-20-20	6.16" 150.2 mm	4.63" 117.5 mm	3.43" 87.0 mm	1.27" 32.3 mm	2.63" 66.7 mm	3.36" 85.2 mm	1 5/8-12 UN-2A	1 1/4-11 1/2 NPTF
PS2490302-24-24	6.16" 150.2 mm	4.63" 117.5 mm	3.43" 87.0 mm	1.27" 32.3 mm	2.63" 66.7 mm	3.36" 85.2 mm	1 7/8-12 UN-2A	1 1/2-11 1/2 NPTF
PS3290302-32-32	7.38" 187.4 mm	5.45" 138.4 mm	3.93" 99.7 mm	1.52" 38.5 mm	3.06" 77.6 mm	4.19" 106.4 mm	2 1/2-12 UN-2A	2-11-1/2 NPTF

Male 37° Flare - Male 37° Flare



Part Number	A	B	C	D	Dia.	Hex 1	Hex 2	Port 1	Port 2
PS490303-4-4	3.14" 79.7 mm	2.73" 69.4 mm	1.39" 35.2 mm	1.99" 50.5 mm	1.20" 30.5 mm	.75" 19.0 mm	.56" 14.3 mm	7/16-20 UNF-2A	7/16-20 UNF-2A
PS690303-6-6	3.39" 86.1 mm	2.88" 73.2 mm	1.44" 36.6 mm	2.09" 53.0 mm	1.29" 32.8 mm	.88" 22.2 mm	.69" 17.5 mm	9/16-18 UNF-2A	9/16-18 UNF-2A
PS890303-8-8	3.67" 93.2 mm	3.08" 78.2 mm	1.78" 45.1 mm	2.64" 67.1 mm	1.73" 44.0 mm	1.12" 28.6 mm	.88" 22.2 mm	3/4-16 UNF-2A	3/4-16 UNF-2A
PS890303-10-10	3.77" 95.8 mm	3.18" 80.8 mm	1.90" 48.4 mm	2.77" 70.4 mm	1.73" 44.0 mm	1.12" 28.6 mm	.88" 22.2 mm	7/8-14 UNF-2A	7/8-14 UNF-2A
PS1290303-12-12	4.21" 106.8 mm	3.54" 89.8 mm	2.24" 56.9 mm	3.86" 98.3 mm	2.17" 55.2 mm	1.38" 35.0 mm	1.25" 31.8 mm	1-1/16-12 UN-2A	1-1/16-12 UN-2A
PS1690303-16-16	4.67" 118.7 mm	3.81" 97.0 mm	2.42" 61.3 mm	3.66" 92.9 mm	2.48" 63.0 mm	1.62" 41.3 mm	1.50" 38.1 mm	1-5/16-12 UN-2A	1-5/16-12 UN-2A

3 Piece Design



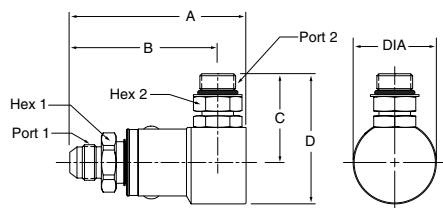
Part Number	A	B	C	D	E	Hex	Wrench Flats	Dia.	Port 1	Port 2
PS2490303-20-20	6.16" 156.4 mm	4.63" 117.5 mm	3.43" 87.0 mm	2.85" 72.4 mm	4.53" 115.0 mm	1.88" 47.6 mm	2.63" 66.7 mm	3.36" 85.2 mm	1 5/8-12 UN-2A	1 5/8-12 UN-2A
PS2490303-24-24	5.81" 157.1 mm	4.65" 118.2 mm	3.43" 87.0 mm	3.05" 77.6 mm	4.73" 120.2 mm	2.13" 54.0 mm	2.63" 66.7 mm	3.36" 85.2 mm	1 7/8-12 UN-2A	1 7/8-12 UN-2A
PS3290303-32-32	7.44" 189.0 mm	5.51" 140.0 mm	3.93" 99.7 mm	3.70" 94.0 mm	5.80" 147.2 mm	2.75" 69.8 mm	3.06" 77.6 mm	4.19" 106.4 mm	2 1/2-12 UN-2A	2 1/2-12 UN-2A

D Swivels

Swivels

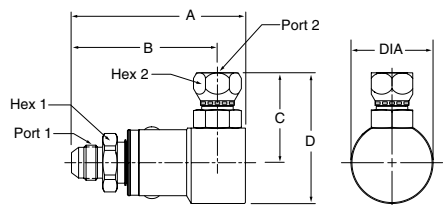
90°
PS Series

Male 37° Flare - Male SAE O-Ring Straight Thread



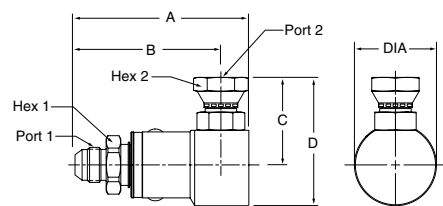
Part Number	A	B	C	D	Dia.	Hex 1	Hex 2	Port 1	Port 2
PS490305-4-4	3.14" 79.7 mm	2.73" 69.4 mm	1.38" 35.0 mm	1.98" 50.2 mm	1.20" 30.5 mm	.75" 19.0 mm	.56" 14.3 mm	7/16-20 UNF-2A	7/16-20 UNF-2A
PS690305-6-6	3.39" 86.1 mm	2.88" 73.2 mm	1.55" 39.4 mm	2.20" 55.8 mm	1.29" 32.8 mm	.88" 22.2 mm	.69" 17.5 mm	9/16-18 UNF-2A	9/16-18 UNF-2A
PS890305-8-8	3.67" 93.2 mm	3.08" 78.2 mm	1.86" 47.2 mm	2.72" 69.2 mm	1.73" 44.0 mm	1.12" 28.6 mm	.88" 22.2 mm	3/4-16 UNF-2A	3/4-16 UNF-2A
PS1290305-12-12	4.21" 106.8 mm	3.54" 89.8 mm	2.40" 61.0 mm	3.49" 88.5 mm	2.17" 55.2 mm	1.38" 35.0 mm	1.25" 31.8 mm	1-1/16-12 UN-2A	1-1/16-12 UN-2A
PS1690305-16-16	4.67" 118.7 mm	3.81" 96.8 mm	2.50" 63.4 mm	3.74" 94.9 mm	2.48" 63.0 mm	1.62" 41.3 mm	1.50" 38.1 mm	1-5/16-12 UN-2A	1-5/16-12 UN-2A

Male 37° Flare - Female 37° Flare



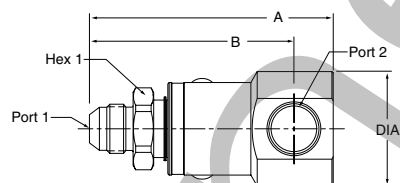
Part Number	A	B	C	D	Dia.	Hex 1	Hex 2	Port 1	Port 2
PS490306-4-4	3.14" 79.7 mm	2.73" 69.4 mm	1.47" 37.3 mm	2.07" 52.5 mm	1.20" 30.5 mm	.75" 19.0 mm	.56" 14.3 mm	7/16-20 UNF-2A	7/16-20 UNF-2B
PS690306-6-6	3.39" 86.1 mm	2.88" 73.2 mm	1.57" 39.9 mm	2.22" 56.3 mm	1.29" 32.8 mm	.88" 22.2 mm	.69" 17.5 mm	9/16-18 UNF-2A	9/16-18 UNF-2B
PS890306-8-8	3.67" 93.2 mm	3.08" 78.2 mm	1.91" 48.4 mm	2.77" 70.4 mm	1.73" 44.0 mm	1.12" 28.6 mm	.88" 22.2 mm	3/4-16 UNF-2A	3/4-16 UNF-2B
PS1290306-12-12	4.21" 106.8 mm	3.54" 89.8 mm	2.34" 59.4 mm	3.43" 87.0 mm	2.17" 55.2 mm	1.38" 35.0 mm	1.25" 31.8 mm	1-1/16-12 UN-2A	1-1/16-12 UN-2B
PS1690306-16-16	4.67" 118.7 mm	3.81" 96.8 mm	2.54" 64.6 mm	3.79" 96.2 mm	2.48" 63.0 mm	1.62" 41.3 mm	1.50" 38.1 mm	1-5/16-12 UN-2A	1-5/16-12 UN-2B

Male 37° Flare - Female NPSM Pipe Swivel



Part Number	A	B	C	D	Dia.	Hex 1	Hex 2	Port 1	Port 2
PS490307-4-4	3.14" 79.7 mm	2.73" 69.4 mm	1.48" 37.5 mm	2.08" 52.8 mm	1.20" 30.5 mm	.75" 19.0 mm	.69" 17.4 mm	7/16-20 UNF-2A	1/4-18 NPSM
PS690307-6-6	3.39" 86.1 mm	2.88" 73.2 mm	1.51" 38.4 mm	2.16" 54.8 mm	1.29" 32.8 mm	.88" 22.2 mm	.88" 22.2 mm	9/16-18 UNF-2A	3/8-18 NPSM
PS890307-8-8	3.67" 93.2 mm	3.08" 78.2 mm	1.86" 47.2 mm	2.72" 69.2 mm	1.73" 44.0 mm	1.12" 28.6 mm	1.00" 25.4 mm	3/4-16 UNF-2A	1/2-14 NPSM
PS1290307-12-12	4.21" 106.8 mm	3.54" 89.8 mm	2.24" 56.9 mm	3.33" 84.5 mm	2.17" 55.2 mm	1.38" 35.0 mm	1.25" 31.8 mm	1-1/16-12 UN-2A	3/4-14 NPSM
PS1690307-16-16	4.67" 118.7 mm	3.81" 96.8 mm	2.48" 63.1 mm	3.73" 94.6 mm	2.48" 63.0 mm	1.62" 41.3 mm	1.50" 38.1 mm	1-5/16-12 UN-2A	1-11/2 NPSM

Male 37° Flare - Female SAE Straight Thread

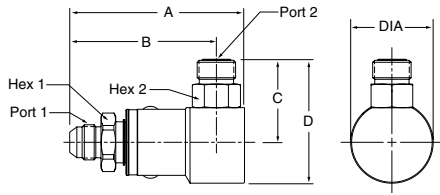


Part Number	A	B	Dia.	Hex 1	Port 1	Port 2
PS490310-4-4	3.14" 79.7 mm	2.73" 69.4 mm	1.20" 30.5 mm	.75" 19.0 mm	7/16-20 UNF-2A	7/16-20 UNF-2B
PS690310-6-6	3.39" 86.1 mm	2.88" 73.2 mm	1.29" 32.8 mm	.88" 22.2 mm	9/16-18 UNF-2A	9/16-18 UNF-2B
PS890310-8-8	3.67" 93.2 mm	3.08" 78.2 mm	1.73" 44.0 mm	1.12" 28.6 mm	3/4-16 UNF-2A	3/4-16 UNF-2B
PS1290310-12-12	4.21" 106.8 mm	3.54" 89.8 mm	2.17" 55.2 mm	1.38" 35.0 mm	1-1/16-12 UN-2A	1-1/16-12 UN-2B
PS1690310-16-16	4.67" 118.7 mm	3.81" 96.8 mm	2.48" 63.0 mm	1.62" 41.3 mm	1-1/16-12 UN-2A	1-1/16-12 UN-2B

Swivels

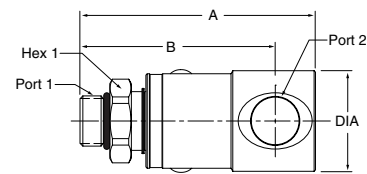
90°
PS Series

Male 37° Flare - O-Ring Face Seal



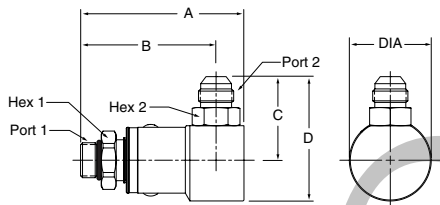
Part Number	A	B	C	D	Dia.	Hex 1	Hex 2	Port 1	Port 2
PS4903JM-4-4	3.14" 79.7 mm	2.73" 69.4 mm	1.29" 32.5 mm	1.89" 47.9 mm	1.20" 30.5 mm	.75" 19.0 mm	.56" 14.3 mm	7/16-20 UNF-2A	9/16-18 UNF-2A
PS6903JM-6-6	3.39" 86.1 mm	2.88" 73.2 mm	1.40" 35.6 mm	2.05" 52.0 mm	1.29" 32.8 mm	.88" 22.2 mm	.69" 17.5 mm	9/16-18 UNF-2A	11/16-16 UN-2A
PS8903JM-8-8	3.67" 93.2 mm	3.08" 78.2 mm	1.74" 44.1 mm	2.60" 66.1 mm	1.73" 44.0 mm	1.12" 28.6 mm	.88" 22.2 mm	3/4-16 UNF-2A	13/16-16 UN-2A
PS8903JM-10-10	3.77" 95.8 mm	3.18" 80.8 mm	1.96" 49.9 mm	2.83" 71.9 mm	1.73" 44.0 mm	1.12" 28.6 mm	.88" 22.2 mm	7/8-14 UNF-2A	1-14 UN-2A
PS12903JM-12-12	4.21" 106.8 mm	3.54" 89.8 mm	2.18" 55.4 mm	3.27" 83.0 mm	2.17" 55.2 mm	1.38" 35.0 mm	1.25" 31.8 mm	1-1/16-12 UN-2A	1-3/16-12 UN-2A
PS16903JM-16-16	4.67" 118.7 mm	3.81" 96.9 mm	2.34" 59.6 mm	3.59" 91.1 mm	2.48" 63.0 mm	1.62" 41.3 mm	1.50" 38.1 mm	1-5/16-12 UN-2A	1-7/16-12 UN-2A

Male SAE O-Ring Straight Thread - Female Pipe



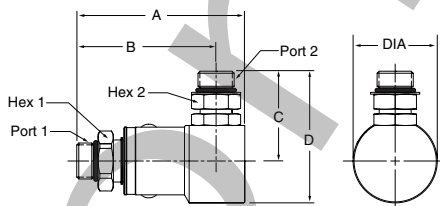
Part Number	A	B	Dia.	Hex 1	Port 1	Port 2
PS490502-4-4	2.93" 74.5 mm	2.53" 64.2 mm	1.20" 30.5 mm	.75" 19.0 mm	7/16-20 UNF-2A	1/4-18 NPTF
PS690502-6-6	3.27" 83.0 mm	2.76" 70.0 mm	1.29" 32.8 mm	.88" 22.2 mm	9/16-18 UNF-2A	3/8-18 NPTF
PS890502-8-8	3.46" 87.8 mm	2.87" 72.8 mm	1.49" 37.8 mm	1.12" 28.6 mm	3/4-16 UNF-2A	1/2-14 NPTF
PS1290502-12-12	3.94" 100.0 mm	3.27" 83.0 mm	1.76" 44.6 mm	1.38" 35.0 mm	1-1/16-12 UN-2A	3/4-14 NPTF
PS1690502-16-16	4.32" 109.8 mm	3.46" 87.9 mm	2.16" 54.9 mm	1.62" 41.3 mm	1-5/16-12 UN-2A	1-11/2 NPTF

Male SAE O-Ring Straight Thread - Male 37° Flare



Part Number	A	B	C	D	Dia.	Hex 1	Hex 2	Port 1	Port 2
PS490503-4-4	2.93" 74.5 mm	2.53" 64.2 mm	1.39" 35.2 mm	1.99" 50.5 mm	1.20" 30.5 mm	.75" 19.0 mm	.56" 14.3 mm	7/16-20 UNF-2A	7/16-20 UNF-2A
PS690503-6-6	3.27" 83.0 mm	2.76" 70.0 mm	1.44" 36.6 mm	2.09" 53.0 mm	1.29" 32.8 mm	.88" 22.2 mm	.69" 17.5 mm	9/16-18 UNF-2A	9/16-18 UNF-2A
PS890503-8-8	3.46" 87.8 mm	2.87" 72.8 mm	1.78" 45.1 mm	2.64" 67.1 mm	1.73" 44.0 mm	1.12" 28.6 mm	.88" 22.2 mm	3/4-16 UNF-2A	3/4-16 UNF-2A
PS890503-10-10	3.51" 89.2 mm	2.92" 74.2 mm	1.90" 48.4 mm	2.77" 70.4 mm	1.73" 44.0 mm	1.12" 28.6 mm	.88" 22.2 mm	7/8-14 UNF-2A	7/8-14 UNF-2A
PS1290503-12-12	3.94" 100.0 mm	3.27" 83.0 mm	2.24" 56.9 mm	3.86" 98.3 mm	2.17" 55.2 mm	1.38" 35.0 mm	1.25" 31.8 mm	1-1/16-12 UN-2A	1-1/16-12 UN-2A
PS1690503-16-16	4.32" 109.8 mm	3.46" 87.9 mm	2.42" 61.3 mm	3.66" 92.9 mm	2.48" 63.0 mm	1.62" 41.3 mm	1.50" 38.1 mm	1-5/16-12 UN-2A	1-5/16-12 UN-2A

Male SAE O-Ring Straight Thread - Male SAE O-Ring Straight Thread



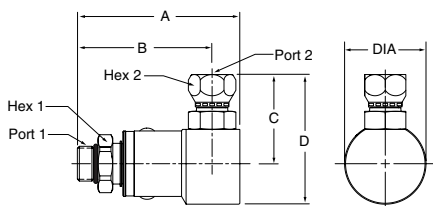
Part Number	A	B	C	D	Dia.	Hex 1	Hex 2	Port 1	Port 2
PS490505-4-4	2.93" 74.5 mm	2.53" 64.2 mm	1.38" 35.0 mm	1.98" 50.2 mm	1.20" 30.5 mm	.75" 19.0 mm	.56" 14.3 mm	7/16-20 UNF-2A	7/16-20 UNF-2A
PS690505-6-6	3.27" 83.0 mm	2.76" 70.0 mm	1.55" 39.4 mm	2.20" 55.8 mm	1.29" 32.8 mm	.88" 22.2 mm	.69" 17.5 mm	9/16-18 UNF-2A	9/16-18 UNF-2A
PS890505-8-8	3.46" 87.8 mm	2.87" 72.8 mm	1.86" 47.2 mm	2.72" 69.2 mm	1.73" 44.0 mm	1.12" 28.6 mm	.88" 22.2 mm	3/4-16 UNF-2A	3/4-16 UNF-2A
PS1290505-12-12	3.94" 100.0 mm	3.27" 83.0 mm	2.40" 61.0 mm	3.49" 88.5 mm	2.17" 55.2 mm	1.38" 35.0 mm	1.25" 31.8 mm	1-1/16-12 UN-2A	1-1/16-12 UN-2A
PS1690505-16-16	4.32" 109.8 mm	3.46" 87.9 mm	2.50" 63.4 mm	3.74" 94.9 mm	2.48" 63.0 mm	1.62" 41.3 mm	1.50" 38.1 mm	1-5/16-12 UN-2A	1-5/16-12 UN-2A

D Swivels

Swivels

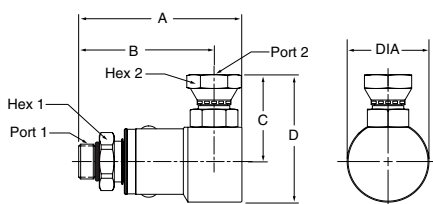
90°
PS Series

Male SAE O-Ring Straight Thread - Female 37° Flare



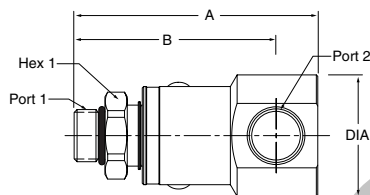
Part Number	A	B	C	D	Dia.	Hex 1	Hex 2	Port 1	Port 2
PS490506-4-4	2.93" 74.5 mm	2.53" 64.2 mm	1.47" 37.3 mm	2.07" 52.5 mm	1.20" 30.5 mm	.75" 19.0 mm	.56" 14.3 mm	7/16-20 UNF-2A	7/16-20 UNF-2B
PS690506-6-6	3.27" 83.0 mm	2.76" 70.0 mm	1.57" 39.9 mm	2.22" 56.3 mm	1.29" 32.8 mm	.88" 22.2 mm	.69" 17.5 mm	9/16-18 UNF-2A	9/16-18 UNF-2B
PS890506-8-8	3.46" 87.8 mm	2.87" 72.8 mm	1.91" 48.4 mm	2.77" 70.4 mm	1.73" 44.0 mm	1.12" 28.6 mm	.88" 22.2 mm	3/4-16 UNF-2A	3/4-16 UNF-2B
PS1290506-12-12	3.94" 100.0 mm	3.27" 83.0 mm	2.34" 59.4 mm	3.43" 87.0 mm	2.17" 55.2 mm	1.38" 35.0 mm	1.25" 31.8 mm	1-1/16-12 UN-2A	1-1/16-12 UN-2B
PS1690506-16-16	4.32" 109.8 mm	3.46" 87.9 mm	2.54" 64.6 mm	3.79" 96.2 mm	2.48" 63.0 mm	1.62" 41.3 mm	1.50" 38.1 mm	1-5/16-12 UN-2A	1-5/16-12 UN-2B

Male SAE O-Ring Straight Thread - Female NPSM Pipe Swivel



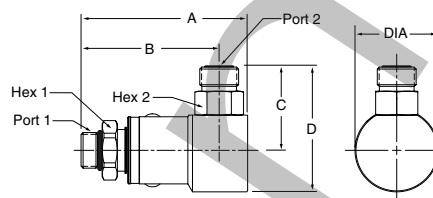
Part Number	A	B	C	D	Dia.	Hex 1	Hex 2	Port 1	Port 2
PS490507-4-4	2.93" 74.5 mm	2.53" 64.2 mm	1.48" 37.5 mm	2.08" 52.8 mm	1.20" 30.5 mm	.75" 19.0 mm	.69" 17.4 mm	7/16-20 UNF-2A	1/4-18 NPSM
PS690507-6-6	3.27" 83.0 mm	2.76" 70.0 mm	1.51" 38.4 mm	2.16" 54.8 mm	1.29" 32.8 mm	.88" 22.2 mm	.88" 22.2 mm	9/16-18 UNF-2A	3/8-18 NPSM
PS890507-8-8	3.46" 87.8 mm	2.87" 72.8 mm	1.86" 47.2 mm	2.72" 69.2 mm	1.73" 44.0 mm	1.12" 28.6 mm	1.00" 25.4 mm	3/4-16 UNF-2A	1/2-14 NPSM
PS1290507-12-12	3.94" 100.0 mm	3.27" 83.0 mm	2.24" 56.9 mm	3.33" 84.5 mm	2.17" 55.2 mm	1.38" 35.0 mm	1.25" 31.8 mm	1-1/16-12 UN-2A	3/4-14 NPSM
PS1690507-16-16	4.32" 109.8 mm	3.46" 87.9 mm	2.48" 63.1 mm	3.73" 94.6 mm	2.48" 63.0 mm	1.62" 41.3 mm	1.50" 38.1 mm	1-5/16-12 UN-2A	1-11/2 NPSM

Male SAE O-Ring Straight Thread - Female SAE Straight Thread



Part Number	A	B	Dia.	Hex 1	Port 1	Port 2
PS490510-4-4	2.93" 74.5 mm	2.53" 64.2 mm	1.20" 30.5 mm	.75" 19.0 mm	7/16-20 UNF-2A	7/16-20 UNF-2B
PS690510-6-6	3.27" 83.0 mm	2.76" 70.0 mm	1.29" 32.8 mm	.88" 22.2 mm	9/16-18 UNF-2A	9/16-18 UNF-2B
PS890510-8-8	3.46" 87.8 mm	2.87" 72.8 mm	1.73" 44.0 mm	1.12" 28.6 mm	3/4-16 UNF-2A	3/4-16 UNF-2B
PS1290510-12-12	3.94" 100.0 mm	3.27" 83.0 mm	2.17" 55.2 mm	1.38" 35.0 mm	1-1/16-12 UN-2A	1-1/16-12 UN-2B
PS1690510-16-16	4.32" 109.8 mm	3.46" 87.9 mm	2.48" 63.0 mm	1.62" 41.3 mm	1-5/16-12 UN-2A	1-5/16-12 UN-2B

Male SAE O-Ring Straight Thread - O-Ring Face Seal

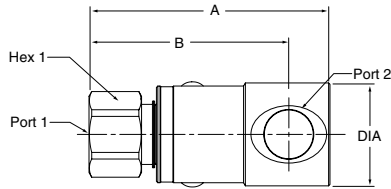


Part Number	A	B	C	D	Dia.	Hex 1	Hex 2	Port 1	Port 2
PS4905JM-4-4	2.93" 74.5 mm	2.53" 64.2 mm	1.29" 32.5 mm	1.89" 47.9 mm	1.20" 30.5 mm	.75" 19.0 mm	.56" 14.3 mm	7/16-20 UNF-2A	9/16-18 UNF-2A
PS6905JM-6-6	3.27" 83.0 mm	2.76" 70.0 mm	1.40" 35.6 mm	2.05" 52.0 mm	1.29" 32.8 mm	.88" 22.2 mm	.69" 17.5 mm	9/16-18 UNF-2A	11/16-18 UN-2A
PS8905JM-8-8	3.46" 87.8 mm	2.87" 72.8 mm	1.74" 44.1 mm	2.60" 66.1 mm	1.73" 44.0 mm	1.12" 28.6 mm	.88" 22.2 mm	3/4-16 UNF-2A	13/16-16 UN-2A
PS8905JM-10-10	3.51" 89.2 mm	2.92" 74.2 mm	1.96" 49.9 mm	2.83" 71.9 mm	1.73" 44.0 mm	1.12" 28.6 mm	.88" 22.2 mm	7/8-14 UNF-2A	1-14 UN-2A
PS12905JM-12-12	3.94" 100.0 mm	3.27" 83.0 mm	2.18" 55.4 mm	3.27" 83.0 mm	2.17" 55.2 mm	1.38" 35.0 mm	1.25" 31.8 mm	1-1/16-12 UN-2A	1-3/16-12 UN-2A
PS16905JM-16-16	4.32" 109.8 mm	3.46" 87.9 mm	2.34" 59.6 mm	3.59" 91.1 mm	2.48" 63.0 mm	1.62" 41.3 mm	1.50" 38.1 mm	1-5/16-12 UN-2A	1-7/16-12 UN-2A

Swivels

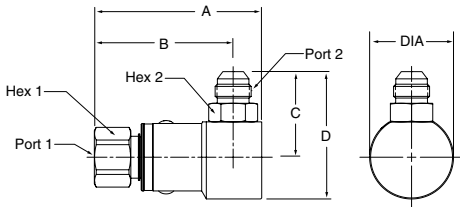
90°
PS Series

Female SAE Straight Thread - Female Pipe



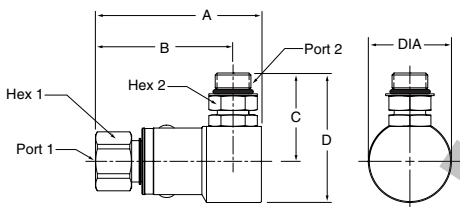
Part Number	A	B	Dia.	Hex 1	Port 1	Port 2
PS491002-4-4	2.87" 72.8 mm	2.46" 62.5 mm	1.20" 30.5 mm	.75" 19.0 mm	7/16-20 UNF-2B	1/4-18 NPTF
PS691002-6-6	3.19" 80.9 mm	2.68" 68.0 mm	1.29" 32.8 mm	.88" 22.2 mm	9/16-18 UNF-2B	3/8-18 NPTF
PS891002-8-8	3.46" 87.8 mm	2.87" 72.8 mm	1.49" 37.8 mm	1.12" 28.6 mm	3/4-16 UNF-2B	1/2-14 NPTF
PS1291002-12-12	4.04" 102.6 mm	3.37" 85.6 mm	1.76" 44.6 mm	1.38" 35.0 mm	1-1/16-12 UN-2B	3/4-14 NPTF
PS1691002-16-16	4.45" 113.0 mm	3.58" 91.0 mm	2.16" 54.9 mm	1.62" 41.3 mm	1-5/16-12 UN-2B	1-11/2 NPTF

Female SAE Straight Thread - Male 37° Flare



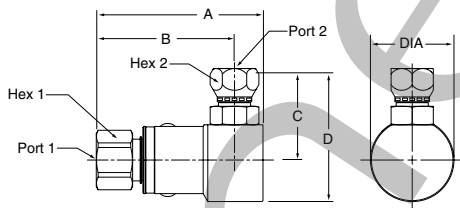
Part Number	A	B	C	D	Dia.	Hex 1	Hex 2	Port 1	Port 2
PS491003-4-4	2.87" 72.8 mm	2.46" 62.5 mm	1.39" 35.2 mm	1.99" 50.5 mm	1.20" 30.5 mm	.75" 19.0 mm	.56" 14.3 mm	7/16-20 UNF-2B	7/16-20 UNF-2A
PS691003-6-6	3.19" 80.9 mm	2.68" 68.0 mm	1.44" 36.6 mm	2.09" 53.0 mm	1.29" 32.8 mm	.88" 22.2 mm	.69" 17.5 mm	9/16-18 UNF-2B	9/16-18 UNF-2A
PS891003-8-8	3.46" 87.8 mm	2.87" 72.8 mm	1.78" 45.1 mm	2.64" 67.1 mm	1.73" 44.0 mm	1.12" 28.6 mm	.88" 22.2 mm	3/4-16 UNF-2B	3/4-16 UNF-2A
PS1291003-12-12	4.04" 102.6 mm	3.37" 85.6 mm	2.24" 56.9 mm	3.86" 98.3 mm	2.17" 55.2 mm	1.38" 35.0 mm	1.25" 31.8 mm	1-1/16-12 UN-2B	1-1/16-12 UN-2A
PS1691003-16-16	4.45" 113.0 mm	3.58" 91.0 mm	2.42" 61.3 mm	3.66" 92.9 mm	2.48" 63.0 mm	1.62" 41.3 mm	1.50" 38.1 mm	1-5/16-12 UN-2B	1-5/16-12 UN-2A

Female SAE Straight Thread - Male SAE O-Ring Straight Thread



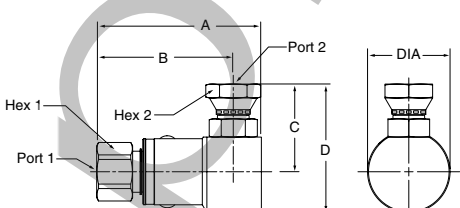
Part Number	A	B	C	D	Dia.	Hex 1	Hex 2	Port 1	Port 2
PS491005-4-4	2.87" 72.8 mm	2.46" 62.5 mm	1.38" 35.0 mm	1.98" 50.2 mm	1.20" 30.5 mm	.75" 19.0 mm	.56" 14.3 mm	7/16-20 UNF-2B	7/16-20 UNF-2A
PS691005-6-6	3.19" 80.9 mm	2.68" 68.0 mm	1.55" 39.4 mm	2.20" 55.8 mm	1.29" 32.8 mm	.88" 22.2 mm	.69" 17.5 mm	9/16-18 UNF-2B	9/16-18 UNF-2A
PS891005-8-8	3.46" 87.8 mm	2.87" 72.8 mm	1.86" 47.2 mm	2.72" 69.2 mm	1.73" 44.0 mm	1.12" 28.6 mm	.88" 22.2 mm	3/4-16 UNF-2B	3/4-16 UNF-2A
PS1291005-12-12	4.04" 102.6 mm	3.37" 85.6 mm	2.40" 61.0 mm	3.49" 88.5 mm	2.17" 55.2 mm	1.38" 35.0 mm	1.25" 31.8 mm	1-1/16-12 UN-2B	1-1/16-12 UN-2A
PS1691005-16-16	4.45" 113.0 mm	3.58" 91.0 mm	2.50" 63.4 mm	3.74" 94.9 mm	2.48" 63.0 mm	1.62" 41.3 mm	1.50" 38.1 mm	1-5/16-12 UN-2B	1-5/16-12 UN-2A

Female SAE Straight Thread - Female 37° Flare



Part Number	A	B	C	D	Dia.	Hex 1	Hex 2	Port 1	Port 2
PS491006-4-4	2.87" 72.8 mm	2.46" 62.5 mm	1.47" 37.3 mm	2.07" 52.5 mm	1.20" 30.5 mm	.75" 19.0 mm	.56" 14.3 mm	7/16-20 UNF-2B	7/16-20 UNF-2B
PS691006-6-6	3.19" 80.9 mm	2.68" 68.0 mm	1.57" 39.9 mm	2.22" 56.3 mm	1.29" 32.8 mm	.88" 22.2 mm	.69" 17.5 mm	9/16-18 UNF-2B	9/16-18 UNF-2B
PS891006-8-8	3.46" 87.8 mm	2.87" 72.8 mm	1.91" 48.4 mm	2.77" 70.4 mm	1.73" 44.0 mm	1.12" 28.6 mm	.88" 22.2 mm	3/4-16 UNF-2B	3/4-16 UNF-2B
PS1291006-12-12	4.04" 102.6 mm	3.37" 85.6 mm	2.34" 59.4 mm	3.43" 87.0 mm	2.17" 55.2 mm	1.38" 35.0 mm	1.25" 31.8 mm	1-1/16-12 UN-2B	1-1/16-12 UN-2B
PS1691006-16-16	4.45" 113.0 mm	3.58" 91.0 mm	2.54" 64.6 mm	3.79" 96.2 mm	2.48" 63.0 mm	1.62" 41.3 mm	1.50" 38.1 mm	1-5/16-12 UN-2B	1-5/16-12 UN-2B

Female SAE Straight Thread - Female NPSM Pipe Swivel



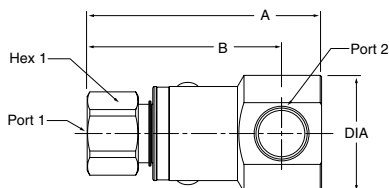
Part Number	A	B	C	D	Dia.	Hex 1	Hex 2	Port 1	Port 2
PS491007-4-4	2.87" 72.8 mm	2.46" 62.5 mm	1.48" 37.5 mm	2.08" 52.8 mm	1.20" 30.5 mm	.75" 19.0 mm	.69" 17.4 mm	7/16-20 UNF-2B	1/4-18 NPSM
PS691007-6-6	3.19" 80.9 mm	2.68" 68.0 mm	1.51" 38.4 mm	2.16" 54.8 mm	1.29" 32.8 mm	.88" 22.2 mm	.88" 22.2 mm	9/16-18 UNF-2B	3/8-18 NPSM
PS891007-8-8	3.46" 87.8 mm	2.87" 72.8 mm	1.86" 47.2 mm	2.72" 69.2 mm	1.73" 44.0 mm	1.12" 28.6 mm	1.00" 25.4 mm	3/4-16 UNF-2B	1/2-14 NPSM
PS1291007-12-12	4.04" 102.6 mm	3.37" 85.6 mm	2.24" 56.9 mm	3.33" 84.5 mm	2.17" 55.2 mm	1.38" 35.0 mm	1.25" 31.8 mm	1-1/16-12 UN-2B	3/4-14 NPSM
PS1691007-16-16	4.45" 113.0 mm	3.58" 91.0 mm	2.48" 63.1 mm	3.73" 94.6 mm	2.48" 63.0 mm	1.62" 41.3 mm	1.50" 38.1 mm	1-5/16-12 UN-2B	1-11/2 NPSM

D Swivels

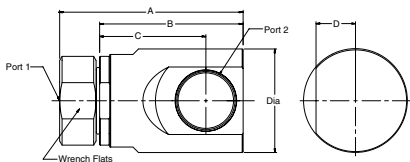
Swivels

90°
PS Series

Female SAE Straight Thread - Female SAE Straight Thread



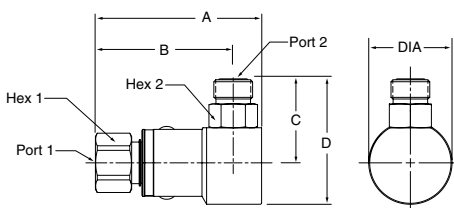
3 Piece Design



Part Number	A	B	Dia.	Hex 1	Port 1	Port 2
PS491010-4-4	2.87" 72.8 mm	2.46" 62.5 mm	1.20" 30.5 mm	.75" 19.0 mm	7/16-20 UNF-2B	7/16-20 UNF-2B
PS691010-6-6	3.19" 80.9 mm	2.68" 68.0 mm	1.29" 32.8 mm	.88" 22.2 mm	9/16-18 UNF-2B	9/16-18 UNF-2B
PS891010-8-8	3.46" 87.8 mm	2.87" 72.8 mm	1.73" 44.0 mm	1.12" 28.6 mm	3/4-16 UNF-2B	3/4-16 UNF-2B
PS1291010-12-12	4.04" 102.6 mm	3.37" 85.6 mm	2.17" 55.2 mm	1.38" 35.0 mm	1-1/16-12 UN-2B	1-1/16-12 UN-2B
PS1691010-16-16	4.45" 113.0 mm	3.58" 91.0 mm	2.48" 63.0 mm	1.62" 41.3 mm	1-5/16-12 UN-2B	1-5/16-12 UN-2B

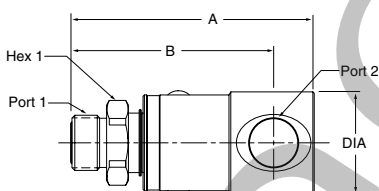
Part Number	A	B	C	D	Wrench Flats	Dia.	Port 1	Port 2
PS2491010-20-20	5.91" 150.2 mm	4.63" 117.5 mm	3.43" 87.0 mm	1.27" 32.3 mm	2.63" 66.7 mm	3.36" 85.2 mm	1 5/8-12 UN-2B	1 5/8-12 UN-2B
PS2491010-24-24	5.91" 150.2 mm	4.63" 117.5 mm	3.43" 87.0 mm	1.27" 32.3 mm	2.63" 66.7 mm	3.36" 85.2 mm	1 7/8-12 UN-2B	1 7/8-12 UN-2B
PS3291010-32-32	6.83" 179.8 mm	5.45" 138.4 mm	3.93" 99.7 mm	1.52" 38.5 mm	3.06" 77.6 mm	4.19" 106.4 mm	2 11/16-12 UN-2B	2-1/2-12 UN-2B

Female SAE Straight Thread - O-Ring Face Seal



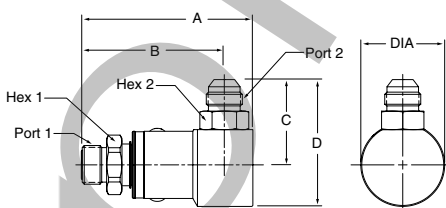
Part Number	A	B	C	D	Dia.	Hex 1	Hex 2	Port 1	Port 2
PS4910JM-4-4	2.87" 72.8 mm	2.46" 62.5 mm	1.29" 32.5 mm	1.89" 47.9 mm	1.20" 30.5 mm	.75" 19.0 mm	.56" 14.3 mm	7/16-20 UNF-2B	9/16-18 UNF-2A
PS6910JM-6-6	3.19" 80.9 mm	2.68" 68.0 mm	1.40" 35.6 mm	2.05" 52.0 mm	1.29" 32.8 mm	.88" 22.2 mm	.69" 17.5 mm	9/16-18 UNF-2B	11/16-16 UNF-2A
PS8910JM-8-8	3.46" 87.8 mm	2.87" 72.8 mm	1.74" 44.1 mm	2.60" 66.1 mm	1.73" 44.0 mm	1.12" 28.6 mm	.88" 22.2 mm	3/4-16 UNF-2B	13/16-16 UN-2A
PS12910JM-12-12	4.04" 102.6 mm	3.37" 85.6 mm	2.18" 55.4 mm	3.27" 83.0 mm	2.17" 55.2 mm	1.38" 35.0 mm	1.25" 31.8 mm	1-1/16-12 UN-2B	1-3/16-12 UN-2A
PS16910JM-16-16	4.45" 113.0 mm	3.58" 91.0 mm	2.34" 59.6 mm	3.59" 91.1 mm	2.48" 63.0 mm	1.62" 41.3 mm	1.50" 38.1 mm	1-5/16-12 UN-2B	1-7/16-12 UN-2A

O-Ring Face Seal - Female Pipe



Part Number	A	B	Dia.	Hex 1	Port 1	Port 2
PS49JM02-4-4	2.99" 76.0 mm	2.59" 65.7 mm	1.20" 30.5 mm	.75" 19.0 mm	9/16-18 UNF-2A	1/4-18 NPTF
PS69JM02-6-6	3.27" 83.0 mm	2.76" 70.0 mm	1.29" 32.8 mm	.88" 22.2 mm	11/16-16 UN-2A	3/8-18 NPTF
PS89JM02-8-8	3.52" 89.5 mm	2.93" 74.5 mm	1.49" 37.8 mm	1.12" 28.6 mm	13/16-16 UN-2A	1/2-14 NPTF
PS129JM02-12-12	4.04" 102.6 mm	3.37" 85.6 mm	1.76" 44.6 mm	1.38" 35.0 mm	1-3/16-12 UN-2A	3/4-14 NPTF
PS169JM02-16-16	4.45" 113.0 mm	3.58" 91.0 mm	2.16" 54.9 mm	1.62" 41.3 mm	1-7/16-12 UN-2A	1-11/16-12 NPTF

O-Ring Face Seal - Male 37° Flare

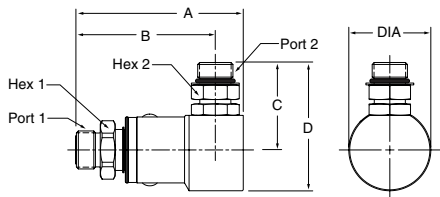


Part Number	A	B	C	D	Dia.	Hex 1	Hex 2	Port 1	Port 2
PS49JM03-4-4	2.99" 76.0 mm	2.59" 65.7 mm	1.39" 35.2 mm	1.99" 50.5 mm	1.20" 30.5 mm	.75" 19.0 mm	.56" 14.3 mm	9/16-18 UNF-2A	7/16-20 UNF-2A
PS69JM03-6-6	3.27" 83.0 mm	2.76" 70.0 mm	1.44" 36.6 mm	2.09" 53.0 mm	1.29" 32.8 mm	.88" 22.2 mm	.69" 17.5 mm	11/16-16 UN-2A	9/16-18 UNF-2A
PS89JM03-8-8	3.52" 89.5 mm	2.93" 74.5 mm	1.78" 45.1 mm	2.64" 67.1 mm	1.73" 44.0 mm	1.12" 28.6 mm	.88" 22.2 mm	13/16-16 UN-2A	3/4-16 UNF-2A
PS89JM03-10-10	3.62" 92.0 mm	3.03" 77.0 mm	1.90" 48.4 mm	2.77" 70.4 mm	1.73" 44.0 mm	1.12" 28.6 mm	.88" 22.2 mm	7/8-14 UN-2A	7/8-14 UNF-2A
PS129JM03-12-12	4.04" 102.6 mm	3.37" 85.6 mm	2.24" 56.9 mm	3.86" 85.3 mm	2.17" 55.2 mm	1.38" 35.0 mm	1.25" 31.8 mm	1-3/16-12 UN-2A	1-1/16-12 UN-2A
PS169JM03-16-16	4.45" 113.0 mm	3.58" 91.0 mm	2.42" 61.3 mm	3.66" 92.9 mm	2.48" 63.0 mm	1.62" 41.3 mm	1.50" 38.1 mm	1-7/16-12 UN-2A	1-5/16-12 UN-2A

Swivels

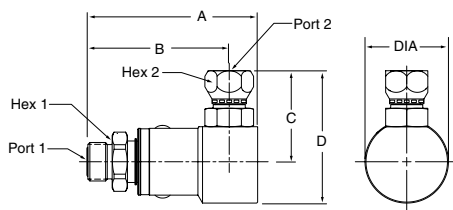
90°
PS Series

O-Ring Face Seal - Male SAE O-Ring Straight Thread



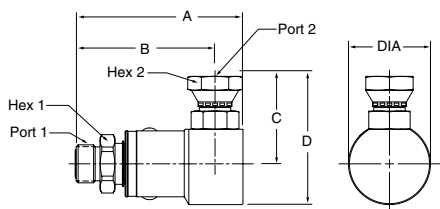
Part Number	A	B	C	D	Dia.	Hex 1	Hex 2	Port 1	Port 2
PS49JM05-4-4	2.99" 76.0 mm	2.59" 65.7 mm	1.38" 35.0 mm	1.98" 50.2 mm	1.20" 30.5 mm	.75" 19.0 mm	.56" 14.3 mm	9/16-18 UNF-2A	7/16-20 UNF-2A
PS69JM05-6-6	3.27" 83.0 mm	2.76" 70.0 mm	1.55" 39.4 mm	2.20" 55.8 mm	1.29" 32.8 mm	.88" 22.2 mm	.69" 17.5 mm	11/16-16 UN-2A	9/16-18 UNF-2A
PS89JM05-8-8	3.52" 89.5 mm	2.93" 74.5 mm	1.86" 47.2 mm	2.72" 69.2 mm	1.73" 44.0 mm	1.12" 28.6 mm	.88" 22.2 mm	13/16-16 UN-2A	3/4-16 UNF-2A
PS129JM05-12-12	4.04" 102.6 mm	3.37" 85.6 mm	2.40" 61.0 mm	3.49" 88.5 mm	2.17" 55.2 mm	1.38" 35.0 mm	1.25" 31.8 mm	1-3/16-12 UN-2A	1-1/16-12 UN-2A
PS169JM05-16-16	4.45" 113.0 mm	3.58" 91.0 mm	2.50" 63.4 mm	3.74" 94.9 mm	2.48" 63.0 mm	1.62" 41.3 mm	1.50" 38.1 mm	1-7/16-12 UN-2A	1-5/16-12 UN-2A

O-Ring Face Seal - Female 37° Flare



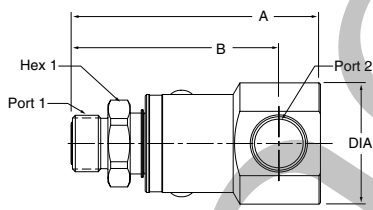
Part Number	A	B	C	D	Dia.	Hex 1	Hex 2	Port 1	Port 2
PS49JM06-4-4	2.99" 76.0 mm	2.59" 65.7 mm	1.47" 37.3 mm	2.07" 52.5 mm	1.20" 30.5 mm	.75" 19.0 mm	.56" 14.3 mm	9/16-18 UNF-2A	7/16-20 UNF-2A
PS69JM06-6-6	3.27" 83.0 mm	2.76" 70.0 mm	1.57" 39.9 mm	2.22" 56.3 mm	1.29" 32.8 mm	.88" 22.2 mm	.69" 17.5 mm	11/16-16 UN-2A	9/16-18 UNF-2A
PS89JM06-8-8	3.52" 89.5 mm	2.93" 74.5 mm	1.91" 48.4 mm	2.77" 70.4 mm	1.73" 44.0 mm	1.12" 28.6 mm	.88" 22.2 mm	13/16-16 UN-2A	3/4-16 UNF-2A
PS129JM06-12-12	4.04" 102.6 mm	3.37" 85.6 mm	2.34" 59.4 mm	3.43" 87.0 mm	2.17" 55.2 mm	1.38" 35.0 mm	1.25" 31.8 mm	1-3/16-12 UN-2A	1-1/16-12 UN-2B
PS169JM06-16-16	4.45" 113.0 mm	3.58" 91.0 mm	2.54" 64.6 mm	3.79" 96.2 mm	2.48" 63.0 mm	1.62" 41.3 mm	1.50" 38.1 mm	1-7/16-12 UN-2A	1-5/16-12 UN-2B

O-Ring Face Seal - Female NPSM Pipe Swivel



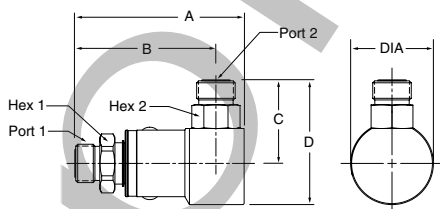
Part Number	A	B	C	D	Dia.	Hex 1	Hex 2	Port 1	Port 2
PS49JM07-4-4	2.99" 76.0 mm	2.59" 65.7 mm	1.48" 37.5 mm	2.08" 52.8 mm	1.20" 30.5 mm	.75" 19.0 mm	.69" 17.4 mm	9/16-18 UNF-2A	1/4-18 NPSM
PS69JM07-6-6	3.27" 83.0 mm	2.76" 70.0 mm	1.51" 38.4 mm	2.16" 54.8 mm	1.29" 32.8 mm	.88" 22.2 mm	.88" 22.2 mm	11/16-16 UN-2A	3/8-18 NPSM
PS89JM07-8-8	3.52" 89.5 mm	2.93" 74.5 mm	1.86" 47.2 mm	2.72" 69.2 mm	1.73" 44.0 mm	1.12" 28.6 mm	1.00" 25.4 mm	13/16-16 UN-2A	1/2-14 NPSM
PS129JM07-12-12	4.04" 102.6 mm	3.37" 85.6 mm	2.24" 56.9 mm	3.33" 84.5 mm	2.17" 55.2 mm	1.38" 35.0 mm	1.25" 31.8 mm	1-3/16-12 UN-2A	3/4-14 NPSM
PS169JM07-16-16	4.45" 113.0 mm	3.58" 91.0 mm	2.48" 63.1 mm	3.73" 94.6 mm	2.48" 63.0 mm	1.62" 41.3 mm	1.50" 38.1 mm	1-7/16-12 UN-2A	1-11/2 NPSM

O-Ring Face Seal - Female SAE Straight Thread



Part Number	A	B	Dia.	Hex 1	Port 1	Port 2
PS49JM10-4-4	2.99" 76.0 mm	2.59" 65.7 mm	1.20" 30.5 mm	.75" 19.0 mm	9/16-18 UNF-2A	7/16-20 UNF-2B
PS69JM10-6-6	3.27" 83.0 mm	2.76" 70.0 mm	1.29" 32.8 mm	.88" 22.2 mm	11/16-16 UN-2A	9/16-18 UNF-2B
PS89JM10-8-8	3.52" 89.5 mm	2.93" 74.5 mm	1.73" 44.0 mm	1.12" 28.6 mm	13/16-16 UN-2A	3/4-16 UNF-2B
PS129JM10-12-12	4.04" 102.6 mm	3.37" 85.6 mm	2.17" 55.2 mm	1.38" 35.0 mm	1-3/16-12 UN-2A	1-1/16-12 UN-2B
PS169JM10-16-16	4.45" 113.0 mm	3.58" 91.0 mm	2.48" 63.0 mm	1.62" 41.3 mm	1-7/16-12 UN-2A	1-5/16-12 UN-2B

O-Ring Face Seal - O-Ring Face Seal



Part Number	A	B	C	D	Dia.	Hex 1	Hex 2	Port 1	Port 2
PS49JMJM-4-4	2.99" 76.0 mm	2.59" 65.7 mm	1.29" 32.5 mm	1.89" 47.9 mm	1.20" 30.5 mm	.75" 19.0 mm	.56" 14.3 mm	9/16-18 UNF-2A	9/16-18 UNF-2A
PS69JMJM-6-6	3.27" 83.0 mm	2.76" 70.0 mm	1.40" 35.6 mm	2.05" 52.0 mm	1.29" 32.8 mm	.88" 22.2 mm	.69" 17.5 mm	11/16-16 UN-2A	11/16-16 UN-2A
PS89JMJM-8-8	3.52" 89.5 mm	2.93" 74.5 mm	1.74" 44.1 mm	2.60" 66.1 mm	1.73" 44.0 mm	1.12" 28.6 mm	.88" 22.2 mm	13/16-16 UN-2A	13/16-16 UN-2A
PS89JMJM-10-10	3.62" 92.0 mm	3.03" 77.0 mm	1.96" 49.9 mm	2.83" 71.9 mm	1.73" 44.0 mm	1.12" 28.6 mm	.88" 22.2 mm	1-14 UN-2A	1-14 UN-2A
PS129JMJM-12-12	4.04" 102.6 mm	3.37" 85.6 mm	2.18" 55.4 mm	3.27" 83.0 mm	2.17" 55.2 mm	1.38" 35.0 mm	1.25" 31.8 mm	1-3/16-12 UN-2A	1-3/16-12 UN-2A
PS169JMJM-16-16	4.45" 113.0 mm	3.58" 91.0 mm	2.34" 59.6 mm	3.59" 91.1 mm	2.48" 63.0 mm	1.62" 41.3 mm	1.50" 38.1 mm	1-7/16-12 UN-2A	1-7/16-12 UN-2A

D Swivels

Repair Kits

Swivels

Repair Kits/Seal Options

Repair Kits come complete with O-Rings, PTFE Back-Up Ring, Lock Washers, Cap Screws, Locking Balls, Retaining Ring and optional grease fitting

1/4" Swivel	3/8" Swivel	1/2" Swivel	3/4" Swivel	1" Swivel
PS4-RPR	PS6-RPR	PS8-RPR	PS12-RPR	PS16-RPR
PS4-GRPR	PS6-GRPR	PS8-GRPR	PS12-GRPR	PS16-GRPR
PS4Y-RPR	PS6Y-RPR	PS8Y-RPR	PS12Y-RPR	PS16Y-RPR
PS4Y-GRPR	PS6Y-GRPR	PS8Y-GRPR	PS12Y-GRPR	PS16Y-GRPR
PS4A-RPR	PS6A-RPR	PS8A-RPR	PS12A-RPR	PS16A-RPR
PS4A-GRPR	PS6A-GRPR	PS8A-GRPR	PS12A-GRPR	PS16A-GRPR
PS4W-RPR	PS6W-RPR	PS8W-RPR	PS12W-RPR	PS16W-RPR
PS4W-GRPR	PS6W-GRPR	PS8W-GRPR	PS12W-GRPR	PS16W-GRPR

H2C-PS = Bearing Removal Pneumatic Nipple

RPR = Kit without grease fitting

GRPR = Repair kit with grease fitting

Seal Options

Nitrile (*standard unless otherwise designated*)

A = Aflas™

W = Ethylene Propylene

Y = Fluorocarbon

Z = Neoprene

For **Perfluoroelastomer** seal option contact the division.

Swivels

Introduction

S Series

S Series Swivels

Introduction

The S Series Swivel product line complements the Quick Coupling Division's PS Series swivel line by offering a pressure balanced, compact forged body design. As a result of the pressure balanced design, the S Series Swivel does not experience a significant increase in torque as pressure rises. The housing body is forged to provide superior performance and durability in tough applications. This product is great for eliminating hose twist, torque and stress caused by the movement of the hydraulic components where side load to the swivel can be minimized.



Features

- 3000 psi working pressure rating for all sizes.
- Variety of seal options.
- Torque value does not significantly increase with pressure.
- Dust seals protect the swivel from damaging environmental contaminants.
- Field service kits are available for quick and reliable repairs.
- 360° swivel eliminates long radius bends, hose twist and stress that can cause premature hose failure.
- One piece forged housing eliminates a brazed 90° adapter connection.
- Case hardened for enhanced service life.
- Compact design to fit into tight areas.

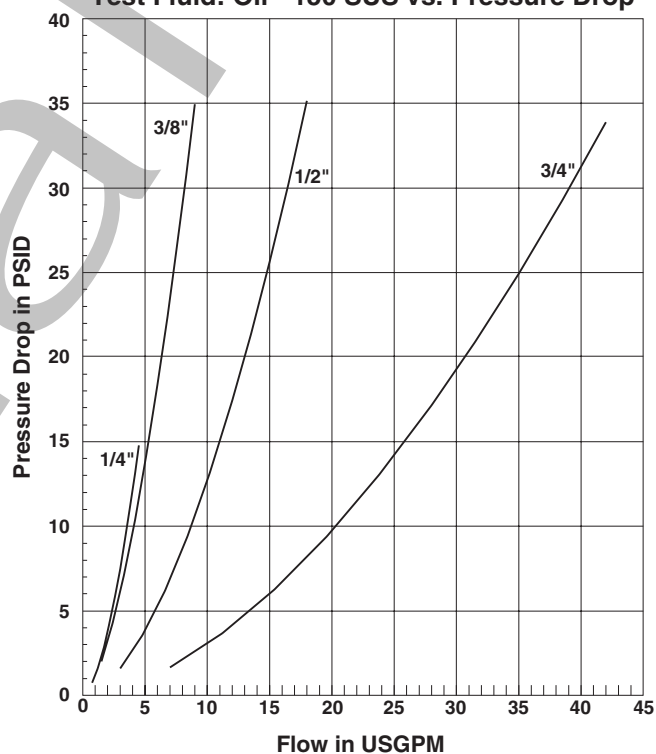
Specifications

Body size	1/4"	3/8"	1/2"	3/4"	1"
Maximum Rated Pressure (PSI)	3000	3000	3000	3000	3000*
Temperature Range (standard)	(-40° to 250° F)				

* 07 ports on 1" S Series maximum rated pressure is 2600 psi.

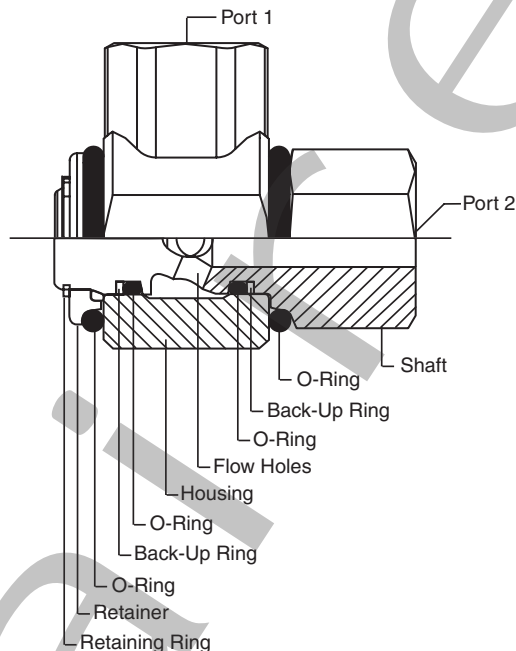
Performance Data

**S Series Swivel (1/4", 3/8", 1/2", 3/4")
Test Fluid: Oil - 150 SUS vs. Pressure Drop**



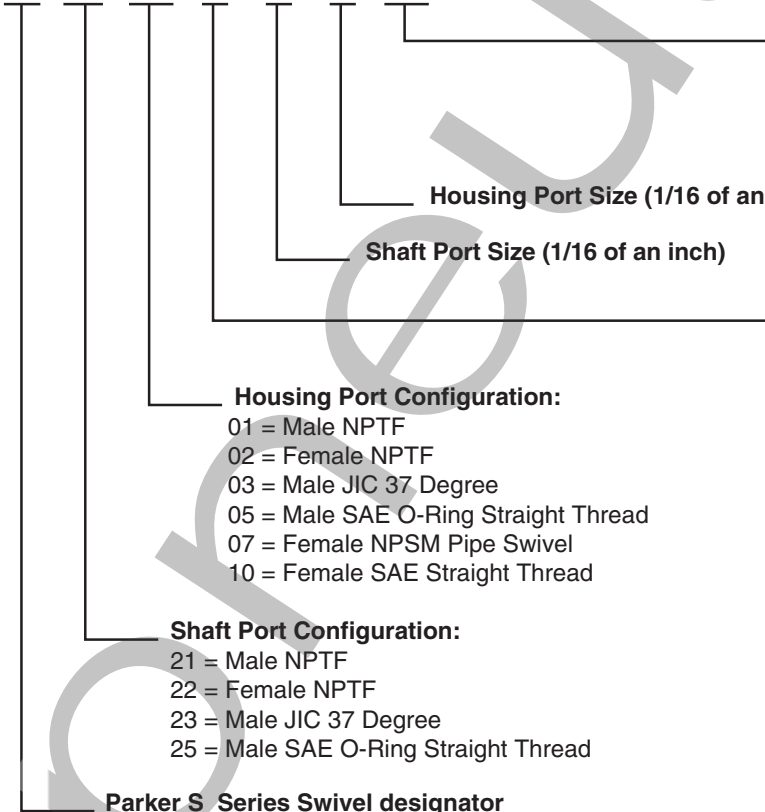
Swivels

How To Order
S Series



S Part Number:

S 21 02 V - 8 - 8 NI



Material and Finish:
 Blank = Carbon Steel (12L14)
 Yellow Chromate Plating
 NI = Carbon Steel (12L14)*
 Nickel Plating

Seal Code:
 Blank = Nitrile (Standard)
 E = Ethylene Propylene
 V = Fluorocarbon

Housing Port Configuration:
 01 = Male NPTF
 02 = Female NPTF
 03 = Male JIC 37 Degree
 05 = Male SAE O-Ring Straight Thread
 07 = Female NPSM Pipe Swivel
 10 = Female SAE Straight Thread

Shaft Port Configuration:
 21 = Male NPTF
 22 = Female NPTF
 23 = Male JIC 37 Degree
 25 = Male SAE O-Ring Straight Thread

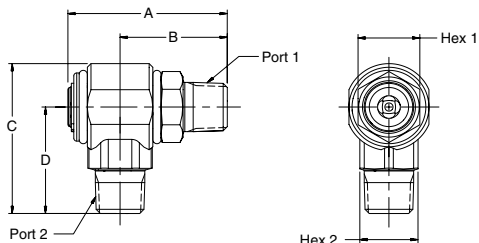
Parker S Series Swivel designator

* Contact the Division for Price and Availability

D Swivels

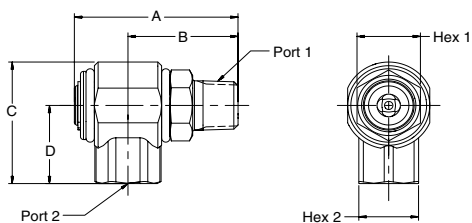
Swivels

Male Pipe - Male Pipe



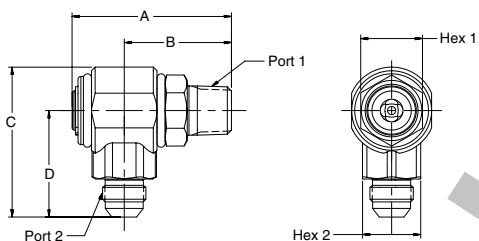
Part Number	A	B	C	D	HEX 1	HEX 2	PORT 1	PORT 2
S2101-4-4	2.31" 58.7 mm	1.51" 38.4 mm	2.19" 55.5 mm	1.50" 38.0 mm	.88" 22.2 mm	.88" 22.2 mm	1/4-18 NPTF	1/4-18 NPTF
S2101-6-6	2.31" 58.7 mm	1.51" 38.4 mm	2.19" 55.5 mm	1.50" 38.0 mm	.88" 22.2 mm	.88" 22.2 mm	3/8-18 NPTF	3/8-18 NPTF
S2101-8-8	2.74" 69.6 mm	1.84" 46.8 mm	2.59" 65.8 mm	1.84" 46.7 mm	1.06" 27.0 mm	1.00" 25.4 mm	1/2-14 NPTF	1/2-14 NPTF
S2101-12-12	3.35" 85.1 mm	2.12" 53.9 mm	3.00" 76.2 mm	2.11" 53.5 mm	1.38" 34.9 mm	1.38" 34.9 mm	3/4-14 NPTF	3/4-14 NPTF

Male Pipe - Female Pipe



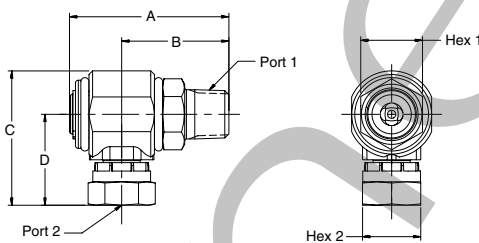
Part Number	A	B	C	D	HEX 1	HEX 2	PORT 1	PORT 2
S2102-4-4	2.31" 58.7 mm	1.51" 38.4 mm	1.78" 45.1 mm	1.09" 27.6 mm	.88" 22.2 mm	.88" 22.2 mm	1/4-18 NPTF	1/4-18 NPTF
S2102-6-6	2.31" 58.7 mm	1.51" 38.4 mm	1.78" 45.1 mm	1.09" 27.6 mm	.88" 22.2 mm	.88" 22.2 mm	3/8-18 NPTF	3/8-18 NPTF
S2102-8-8	2.74" 69.6 mm	1.84" 46.8 mm	2.10" 53.3 mm	1.35" 34.3 mm	1.06" 27.0 mm	1.00" 25.4 mm	1/2-14 NPTF	1/2-14 NPTF
S2102-12-12	3.35" 85.1 mm	2.12" 53.9 mm	2.39" 60.7 mm	1.50" 38.0 mm	1.38" 34.9 mm	1.38" 34.9 mm	3/4-14 NPTF	3/4-14 NPTF

Male Pipe - Male 37° Flare



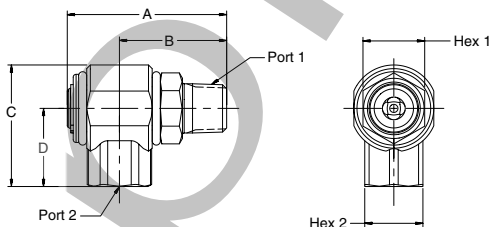
Part Number	A	B	C	D	HEX 1	HEX 2	PORT 1	PORT 2
S2103-4-4	2.31" 58.7 mm	1.51" 38.4 mm	2.19" 55.5 mm	1.50" 38.0 mm	.88" 22.2 mm	.88" 22.2 mm	1/4-18 NPTF	7/16-20UNF-2A
S2103-6-6	2.31" 58.7 mm	1.51" 38.4 mm	2.19" 55.5 mm	1.50" 38.0 mm	.88" 22.2 mm	.88" 22.2 mm	3/8-18 NPTF	9/16-18UNF-2A
S2103-8-8	2.74" 69.6 mm	1.84" 46.8 mm	2.59" 65.8 mm	1.84" 46.7 mm	1.06" 27.0 mm	1.00" 25.4 mm	1/2-14 NPTF	3/4-16UNF-2A
S2103-12-12	3.35" 85.1 mm	2.12" 53.9 mm	3.07" 77.9 mm	2.17" 55.2 mm	1.38" 34.9 mm	1.38" 34.9 mm	3/4-14 NPTF	1-1/16-12UN-2A
S2103-16-16	3.95" 100.33 mm	2.54" 64.5 mm	3.01" 76.5 mm	2.11" 53.6 mm	1.63" 41.4 mm	1.69" 42.9 mm	1-11 1/2 NPTF	1-5/16-12UN-2A

Male Pipe - Female NPSM Pipe Swivel



Part Number	A	B	C	D	HEX 1	HEX 2	PORT 1	PORT 2
S2107-4-4	2.31" 58.7 mm	1.51" 38.4 mm	2.05" 52.0 mm	1.36" 34.5 mm	.88" 22.2 mm	.69" 17.5 mm	1/4-18 NPTF	1/4-18 NPSM
S2107-6-6	2.31" 58.7 mm	1.51" 38.4 mm	2.07" 52.5 mm	1.38" 35.1 mm	.88" 22.2 mm	.88" 22.2 mm	3/8-18 NPTF	3/8-18 NPSM
S2107-8-8	2.74" 69.6 mm	1.84" 46.8 mm	2.32" 59.0 mm	1.57" 39.9 mm	1.06" 27.0 mm	1.00" 25.4 mm	1/2-14 NPTF	1/2-14 NPSM
S2107-12-12	3.35" 85.1 mm	2.12" 53.9 mm	2.74" 69.5 mm	1.85" 46.9 mm	1.38" 34.9 mm	1.25" 31.8 mm	3/4-14 NPTF	3/4-14 NPSM
S2107-16-16	3.95" 100.3 mm	2.54" 64.5 mm	3.14" 79.8 mm	2.23" 56.6 mm	1.63" 41.4 mm	1.69" 42.9 mm	1-11 1/2 NPTF	1-11 1/2 NPSM

Male Pipe - Female SAE Straight Thread

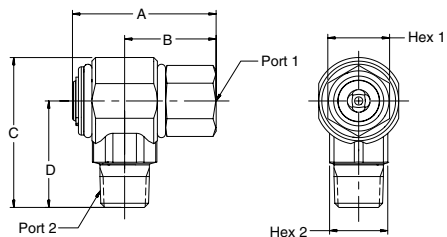


Part Number	A	B	C	D	HEX 1	HEX 2	PORT 1	PORT 2
S2110-6-6	2.31" 58.7 mm	1.51" 38.4 mm	1.78" 45.1 mm	1.09" 27.6 mm	.88" 22.2 mm	.88" 22.2 mm	3/8-18 NPTF	9/16-18UNF-2B
S2110-8-8	2.74" 69.6 mm	1.84" 46.8 mm	2.10" 53.3 mm	1.35" 34.3 mm	1.06" 27.0 mm	1.00" 25.4 mm	1/2-14 NPTF	3/4-16UNF-2B
S2110-12-12	3.35" 85.1 mm	2.12" 53.9 mm	2.54" 64.5 mm	1.65" 41.9 mm	1.38" 34.9 mm	1.38" 34.9 mm	3/4-14 NPTF	1-1/16-12UN-2B

Swivels

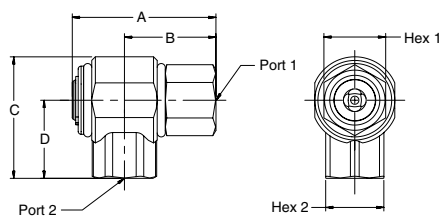
90°
S Series

Female Pipe - Male Pipe



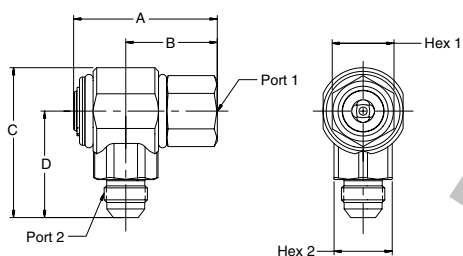
Part Number	A	B	C	D	HEX 1	HEX 2	PORT 1	PORT 2
S2201-4-4	2.19" 55.6 mm	1.39" 35.4 mm	2.19" 55.5 mm	1.50" 38.0 mm	.88" 22.2 mm	.88" 22.2 mm	1/4-18 NPTF	1/4-18 NPTF
S2201-6-6	2.19" 55.6 mm	1.39" 35.4 mm	2.19" 55.5 mm	1.50" 38.0 mm	.88" 22.2 mm	.88" 22.2 mm	3/8-18 NPTF	3/8-18 NPTF
S2201-8-8	2.47" 62.7 mm	1.57" 40.0 mm	2.59" 65.8 mm	1.84" 46.7 mm	1.06" 27.0 mm	1.00" 25.4 mm	1/2-14 NPTF	1/2-14 NPTF
S2201-12-12	3.15" 80.0 mm	1.92" 48.8 mm	3.00" 76.2 mm	2.11" 53.5 mm	1.38" 34.9 mm	1.38" 34.9 mm	3/4-14 NPTF	3/4-14 NPTF

Female Pipe - Female Pipe



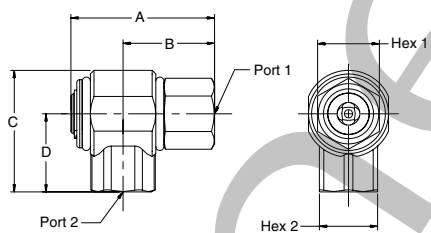
Part Number	A	B	C	D	HEX 1	HEX 2	PORT 1	PORT 2
S2202-4-4	2.19" 55.6 mm	1.39" 35.4 mm	1.78" 45.1 mm	1.09" 27.6 mm	.88" 22.2 mm	.88" 22.2 mm	1/4-18 NPTF	1/4-18 NPTF
S2202-6-6	2.19" 55.6 mm	1.39" 35.4 mm	1.78" 45.1 mm	1.09" 27.6 mm	.88" 22.2 mm	.88" 22.2 mm	3/8-18 NPTF	3/8-18 NPTF
S2202-8-8	2.47" 62.7 mm	1.57" 40.0 mm	2.10" 53.3 mm	1.35" 34.3 mm	1.06" 27.0 mm	1.00" 25.4 mm	1/2-14 NPTF	1/2-14 NPTF
S2202-12-12	3.15" 80.0 mm	1.92" 48.8 mm	2.39" 60.7 mm	1.50" 38.0 mm	1.38" 34.9 mm	1.38" 34.9 mm	3/4-14 NPTF	3/4-14 NPTF

Female Pipe - Male 37° Flare



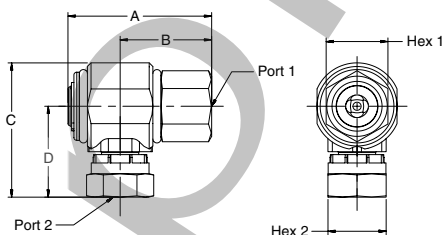
Part Number	A	B	C	D	HEX 1	HEX 2	PORT 1	PORT 2
S2203-4-4	2.19" 55.6 mm	1.39" 35.4 mm	2.19" 55.5 mm	1.50" 38.0 mm	.88" 22.2 mm	.88" 22.2 mm	1/4-18 NPTF	7/16-20UNF-2A
S2203-6-6	2.19" 55.6 mm	1.39" 35.4 mm	2.19" 55.5 mm	1.50" 38.0 mm	.88" 22.2 mm	.88" 22.2 mm	3/8-18 NPTF	9/16-18UNF-2A
S2203-8-8	2.47" 62.7 mm	1.57" 40.0 mm	2.59" 65.8 mm	1.84" 46.7 mm	1.06" 27.0 mm	1.00" 25.4 mm	1/2-14 NPTF	3/4-16UNF-2A
S2203-12-12	3.15" 80.0 mm	1.92" 48.8 mm	3.07" 77.9 mm	2.17" 55.2 mm	1.38" 34.9 mm	1.38" 34.9 mm	3/4-14 NPTF	1-1/16-12UN-2A
S2203-16-16	3.55" 90.2 mm	2.13" 54.1 mm	3.01" 76.5 mm	2.11" 53.6 mm	1.63" 41.4 mm	1.69" 42.9 mm	1-11 1/2 NPTF	1-5/16-12UN-2A

Female Pipe - Female SAE Straight Thread



Part Number	A	B	C	D	HEX 1	HEX 2	PORT 1	PORT 2
S2210-6-6	2.19" 55.6 mm	1.39" 35.4 mm	1.78" 45.1 mm	1.09" 27.6 mm	.88" 22.2 mm	.88" 22.2 mm	3/8-18 NPTF	9/16-18UNF-2B
S2210-8-8	2.47" 62.7 mm	1.57" 40.0 mm	2.10" 53.3 mm	1.35" 34.3 mm	1.06" 27.0 mm	1.00" 25.4 mm	1/2-14 NPTF	3/4-16UNF-2B
S2210-12-12	3.15" 80.0 mm	1.92" 48.8 mm	2.54" 64.5 mm	1.65" 41.9 mm	1.38" 34.9 mm	1.38" 34.9 mm	3/4-14 NPTF	1-1/16-12UN-2B

Female Pipe - Female NPSM Pipe Swivel



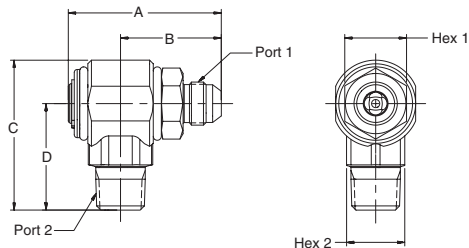
Part Number	A	B	C	D	HEX 1	HEX 2	PORT 1	PORT 2
S2207-4-4	2.19" 55.6 mm	1.39" 35.4 mm	2.05" 52.0 mm	1.36" 34.5 mm	.88" 22.2 mm	.69" 17.5 mm	1/4-18 NPTF	1/4-18 NPSM
S2207-6-6	2.19" 55.6 mm	1.39" 35.4 mm	2.07" 52.5 mm	1.38" 35.1 mm	.88" 22.2 mm	.88" 22.2 mm	3/8-18 NPTF	3/8-18 NPSM
S2207-8-8	2.47" 62.7 mm	1.57" 40.0 mm	2.32" 59.0 mm	1.57" 39.9 mm	1.06" 27.0 mm	1.00" 25.4 mm	1/2-14 NPTF	1/2-14 NPSM
S2207-12-12	3.15" 80.0 mm	1.92" 48.8 mm	2.74" 69.5 mm	1.85" 46.9 mm	1.38" 34.9 mm	1.25" 31.8 mm	3/4-14 NPTF	3/4-14 NPSM
S2207-16-16	3.55" 90.2 mm	2.13" 54.1 mm	3.14" 79.8 mm	2.23" 56.6 mm	1.63" 41.4 mm	1.69" 42.9 mm	1-11 1/2 NPTF	1-11 1/2 NPSM

D Swivels

Swivels

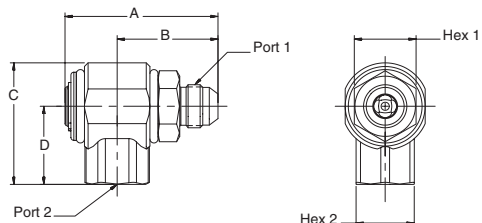
90°
S Series

Male 37° Flare - Male Pipe



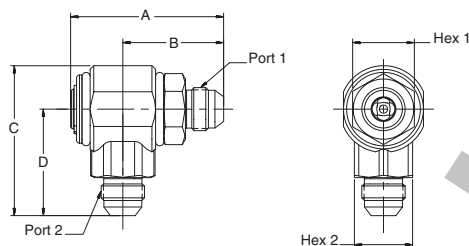
Part Number	A	B	C	D	HEX 1	HEX 2	PORT 1	PORT 2
S2301-4-4	2.41" 61.2 mm	1.61" 40.9 mm	2.19" 55.5 mm	1.50" 38.0 mm	.88" 22.2 mm	.88" 22.2 mm	7/16-20UNF-2A	1/4-18 NPTF
S2301-6-6	2.41" 61.2 mm	1.61" 40.9 mm	2.19" 55.5 mm	1.50" 38.0 mm	.88" 22.2 mm	.88" 22.2 mm	9/16-18UNF-2A	3/8-18 NPTF
S2301-8-8	2.63" 66.8 mm	1.73" 44.0 mm	2.59" 65.8 mm	1.84" 46.7 mm	1.06" 27.0 mm	1.00" 25.4 mm	3/4-16UNF-2A	1/2-14 NPTF
S2301-12-12	3.33" 84.6 mm	2.10" 53.4 mm	3.00" 76.2 mm	2.11" 53.5 mm	1.38" 34.9 mm	1.38" 34.9 mm	1-1/16-12UN-2A	3/4-14 NPTF

Male 37° Flare - Female Pipe



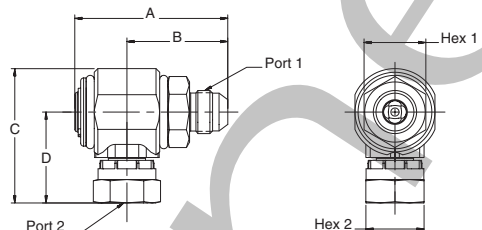
Part Number	A	B	C	D	HEX 1	HEX 2	PORT 1	PORT 2
S2302-4-4	2.41" 61.2 mm	1.61" 40.9 mm	1.78" 45.1 mm	1.09" 27.6 mm	.88" 22.2 mm	.88" 22.2 mm	7/16-20UNF-2A	1/4-18 NPTF
S2302-6-6	2.41" 61.2 mm	1.61" 40.9 mm	1.78" 45.1 mm	1.09" 27.6 mm	.88" 22.2 mm	.88" 22.2 mm	9/16-18UNF-2A	3/8-18 NPTF
S2302-8-8	2.63" 66.8 mm	1.73" 44.0 mm	2.10" 53.3 mm	1.35" 34.3 mm	1.06" 27.0 mm	1.00" 25.4 mm	3/4-16UNF-2A	1/2-14 NPTF
S2302-12-12	3.33" 84.6 mm	2.10" 53.4 mm	2.39" 60.7 mm	1.50" 38.0 mm	1.38" 34.9 mm	1.38" 34.9 mm	1-1/16-12UN-2A	3/4-14 NPTF

Male 37° Flare - Male 37° Flare



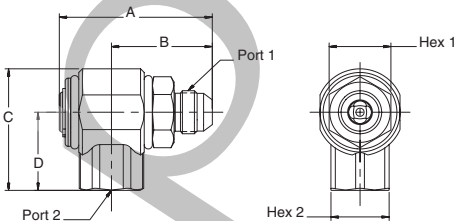
Part Number	A	B	C	D	HEX 1	HEX 2	PORT 1	PORT 2
S2303-4-4	2.41" 61.2 mm	1.61" 40.9 mm	2.19" 55.5 mm	1.50" 38.0 mm	.88" 22.2 mm	.88" 22.2 mm	7/16-20UNF-2A	7/16-20UNF-2A
S2303-6-6	2.41" 61.2 mm	1.61" 40.9 mm	2.19" 55.5 mm	1.50" 38.0 mm	.88" 22.2 mm	.88" 22.2 mm	9/16-18UNF-2A	9/16-18UNF-2A
S2303-8-8	2.63" 66.8 mm	1.73" 44.0 mm	2.59" 65.8 mm	1.84" 46.7 mm	1.06" 27.0 mm	1.00" 25.4 mm	3/4-16UNF-2A	3/4-16UNF-2A
S2303-10-10	2.63" 66.8 mm	1.73" 44.0 mm	2.59" 65.8 mm	1.84" 46.7 mm	1.06" 27.0 mm	1.00" 25.4 mm	7/8-14UNF-2A	7/8-14UNF-2A
S2303-12-12	3.33" 84.6 mm	2.10" 53.4 mm	3.07" 77.9 mm	2.17" 55.2 mm	1.38" 34.9 mm	1.38" 34.9 mm	1-1/16-12UN-2A	1-1/16-12UN-2A
S2303-16-16	4.05" 102.9 mm	2.64" 67.1 mm	3.01" 76.5 mm	2.11" 53.6 mm	1.63" 41.4 mm	1.69" 42.9 mm	1-5/16-12UN-2A	1-5/16-12UN-2A

Male 37° Flare - Female NPSM Pipe Swivel



Part Number	A	B	C	D	HEX 1	HEX 2	PORT 1	PORT 2
S2307-4-4	2.41" 61.2 mm	1.61" 40.9 mm	2.05" 52.0 mm	1.36" 34.5 mm	.88" 22.2 mm	.69" 17.5 mm	7/16-20UNF-2A	1/4-18 NPSM
S2307-6-6	2.41" 61.2 mm	1.61" 40.9 mm	2.07" 52.5 mm	1.38" 35.1 mm	.88" 22.2 mm	.88" 22.2 mm	9/16-18UNF-2A	3/8-18 NPSM
S2307-8-8	2.63" 66.8 mm	1.73" 44.0 mm	2.32" 59.0 mm	1.57" 39.9 mm	1.06" 27.0 mm	1.00" 25.4 mm	3/4-16UNF-2A	1/2-14 NPSM
S2307-12-12	3.33" 84.6 mm	2.10" 53.4 mm	2.74" 69.5 mm	1.85" 46.9 mm	1.38" 34.9 mm	1.25" 31.8 mm	1-1/16-12UN-2A	3/4-14 NPSM

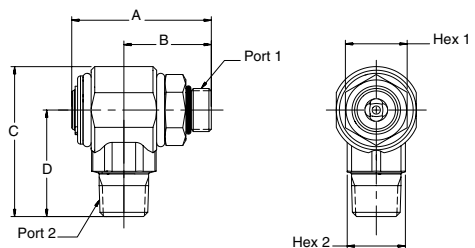
Male 37° Flare - Female SAE Straight Thread



Part number	A	B	C	D	HEX 1	HEX 2	PORT 1	PORT 2
S2310-6-6	2.41" 61.2 mm	1.61" 40.9 mm	1.78" 45.1 mm	1.09" 27.6 mm	.88" 22.2 mm	.88" 22.2 mm	9/16-18UNF-2A	9/16-18UNF-2B
S2310-8-8	2.63" 66.8 mm	1.73" 44.0 mm	2.10" 53.3 mm	1.35" 34.3 mm	1.06" 27.0 mm	1.00" 25.4 mm	3/4-16UNF-2A	3/4-16UNF-2B
S2310-12-12	3.33" 84.6 mm	2.10" 53.4 mm	2.54" 64.5 mm	1.65" 41.9 mm	1.38" 34.9 mm	1.38" 34.9 mm	1-1/16-12UN-2A	1-1/16-12UN-2B

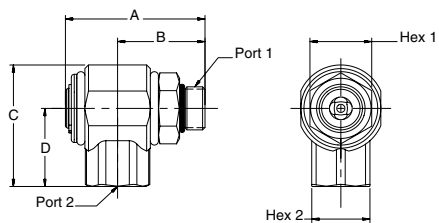
Swivels

Male SAE O-Ring Straight Thread - Male Pipe



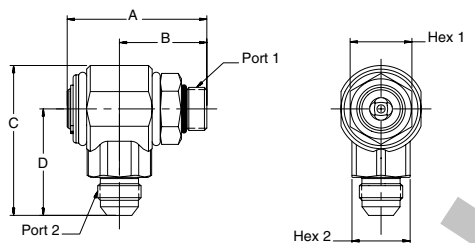
Part number	A	B	C	D	HEX 1	HEX 2	PORT 1	PORT 2
S2501-6-6	2.13" 54.1 mm	1.33" 33.8 mm	2.19" 55.5 mm	1.50" 38.0 mm	.88" 22.2 mm	.88" 22.2 mm	9/16-18UNF-2A	3/8-18 NPTF
S2501-8-8	2.40" 61.0 mm	1.50" 38.2 mm	2.59" 65.8 mm	1.84" 46.7 mm	1.06" 27.0 mm	1.00" 25.4 mm	3/4-16UNF-2A	1/2-14 NPTF
S2501-12-12	3.40" 86.4 mm	2.17" 55.2 mm	3.00" 76.2 mm	2.11" 53.5 mm	1.38" 34.9 mm	1.38" 34.9 mm	1-1/16-12UN-2A	3/4-14 NPTF

Male SAE O-Ring Straight Thread - Female Pipe



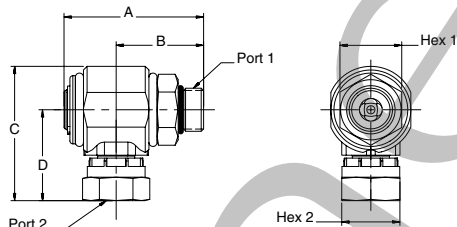
Part number	A	B	C	D	HEX 1	HEX 2	PORT 1	PORT 2
S2502-6-6	2.13" 54.1 mm	1.33" 33.8 mm	1.78" 45.1 mm	1.09" 27.6 mm	.88" 22.2 mm	.88" 22.2 mm	9/16-18UNF-2A	3/8-18 NPTF
S2502-8-8	2.40" 61.0 mm	1.50" 38.2 mm	2.10" 53.3 mm	1.35" 34.3 mm	1.06" 27.0 mm	1.00" 25.4 mm	3/4-16UNF-2A	1/2-14 NPTF
S2502-12-12	3.40" 86.4 mm	2.17" 55.2 mm	2.39" 60.7 mm	1.50" 38.0 mm	1.38" 34.9 mm	1.38" 34.9 mm	1-1/16-12UN-2A	3/4-14 NPTF

Male SAE O-Ring Straight Thread - Male 37° Flare



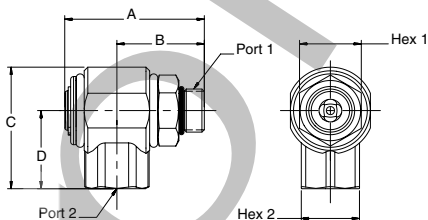
Part number	A	B	C	D	HEX 1	HEX 2	PORT 1	PORT 2
S2503-6-6	2.13" 54.1 mm	1.33" 33.8 mm	2.19" 55.5 mm	1.50" 38.0 mm	.88" 22.2 mm	.88" 22.2 mm	9/16-18UNF-2A	9/16-18UNF-2A
S2503-8-8	2.40" 61.0 mm	1.50" 38.2 mm	2.59" 65.8 mm	1.84" 46.7 mm	1.06" 27.0 mm	1.00" 25.4 mm	3/4-16UNF-2A	3/4-16UNF-2A
S2503-10-10	2.54" 64.5 mm	1.64" 41.7 mm	2.59" 65.8 mm	1.84" 46.7 mm	1.06" 27.0 mm	1.00" 25.4 mm	7/8-14UNF-2A	7/8-14UNF-2A
S2503-12-12	3.40" 86.4 mm	2.17" 55.2 mm	3.07" 77.9 mm	2.17" 55.2 mm	1.38" 34.9 mm	1.38" 34.9 mm	1-1/16-12UN-2A	1-1/16-12UN-2A
S2503-16-16	3.75" 95.3 mm	2.33" 59.2 mm	3.01" 76.5 mm	2.11" 53.6 mm	1.63" 41.4 mm	1.69" 42.9 mm	1-5/16-12UN-2A	1-5/16-12UN-2A

Male SAE O-Ring Straight Thread - Female NPSM Pipe Swivel



Part number	A	B	C	D	HEX 1	HEX 2	PORT 1	PORT 2
S2507-6-6	2.13" 54.1 mm	1.33" 33.8 mm	2.07" 52.5 mm	1.38" 35.1 mm	.88" 22.2 mm	.88" 22.2 mm	9/16-18UNF-2A	3/8-18 NPSM
S2507-8-8	2.40" 61.0 mm	1.50" 38.2 mm	2.32" 59.0 mm	1.57" 39.9 mm	1.06" 27.0 mm	1.00" 25.4 mm	3/4-16UNF-2A	1/2-14 NPSM
S2507-12-12	3.75" 86.4 mm	2.17" 55.2 mm	2.74" 69.5 mm	1.85" 46.9 mm	1.38" 34.9 mm	1.25" 31.8 mm	1-1/16-12UN-2A	3/4-14 NPSM
S2507-16-16	3.75" 95.3 mm	2.33" 59.2 mm	3.14" 79.8 mm	2.23" 56.6 mm	1.63" 41.4 mm	1.69" 42.9 mm	1-5/16-12UN-2A	1-1/2 NPSM

Male SAE O-Ring Straight Thread - Female SAE Straight Thread



Part number	A	B	C	D	HEX 1	HEX 2	PORT 1	PORT 2
S2510-6-6	2.13" 54.1 mm	1.33" 33.8 mm	1.78" 45.1 mm	1.09" 27.6 mm	.88" 22.2 mm	.88" 22.2 mm	9/16-18UNF-2A	9/16-18UNF-2B
S2510-8-8	2.40" 61.0 mm	1.50" 38.2 mm	2.10" 53.3 mm	1.35" 34.3 mm	1.06" 27.0 mm	1.00" 25.4 mm	3/4-16UNF-2A	3/4-16UNF-2B
S2510-12-12	3.40" 86.4 mm	2.17" 55.2 mm	2.54" 64.5 mm	1.65" 41.9 mm	1.38" 34.9 mm	1.38" 34.9 mm	1-1/16-12UN-2A	1-1/16-12UN-2B

Swivels

Repair Kits/Seal Options

Repair Kits come complete with primary O-Rings, PTFE back-up rings, external and internal dust seals, retaining ring and instruction sheet.

Nitrile Seals		EP Seals		Fluorocarbon Seals	
Size	Kit Number	Size	Kit Number	Size	Kit Number
-4/-6	RK-4/6N	-4/-6	RK-4/6E	-4/-6	RK-4/6V
-8/-10	RK-8N	-8/-10	RK-8E	-8/-10	RK-8V
-12	RK-12N	-12	RK-12E	-12	RK-12V
-16	RK-16N	-16	RK-16E	-16	RK-16V