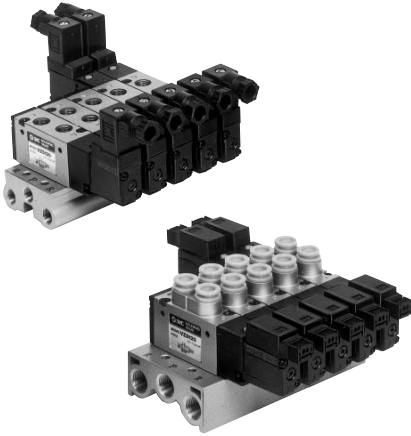


Series VZ5000/Body ported Manifold Specifications

Manifold Standard



Manifold Specifications

Model		Type 20	Type 21
Manifold type		Single base/B mount	
P(SUP)/R(EXH)		Common SUP/Common EXH	
Valve stations		2 to 15 stations	2 to 20 stations
4(A), 2(B) port location		Valve	
Port size	1(P), 3/5(R) port	Rc 1/8	Rc 1/4
	4(A), 2(B) port	Rc 1/8, C6, C8	

Flow Characteristics

Manifold	Port size		Flow characteristics					
	1(P), 5/3(R) port	2(B), 4(A) port	1 → 4/2 (P → A/B)			4/2 → 5/3 (A/B → R)		
			C [dm ³ /(s·bar)]	b	Cv	C [dm ³ /(s·bar)]	b	Cv
VV5Z5-20-01	1/8	1/8	2.2	0.35	0.57	2.3	0.26	0.55
VV5Z5-20-C6	1/8	C6	1.4	0.32	0.37	2.0	0.25	0.49
VV5Z5-20-C8	1/8	C8	1.7	0.38	0.45	2.1	0.25	0.51
VV5Z5-21-01	1/4	1/8	2.1	0.36	0.55	2.3	0.26	0.54
VV5Z5-21-C6	1/4	C6	1.4	0.32	0.36	2.1	0.24	0.50
VV5Z5-21-C8	1/4	C8	1.8	0.37	0.50	2.1	0.20	0.50

Note) Value at manifold base mounted, 2 position single operating

How to Order Manifold

Instruct by specifying the valves and blanking plate assembly to be mounted on the manifold along with the manifold base model no.

(Example) VV5Z5-20-031.....1 pc. (Manifold base)

*VZ5120-5G-01.....2 pcs. (Valve)

*DXT199-22-1A.....1 pc. (Blanking plate assembly)

↳The asterisk denotes the symbol for assembly. Prefix it to the part nos. of the solenoid valve, etc.

Flat Ribbon Cable Manifold

- One-touch wiring to consolidate connection of external wires.

- Clean appearance

The flat cable provides wiring on a printed circuit board to the individual valves at the manifold base, enabling the consolidation of external wiring at a touch through a 26 pins MIL connector.



Flat Ribbon Cable Manifold Specifications

Model		Type 21P
Manifold type		Single base/B mount
P(SUP), R(EXH)		Common SUP/Common EXH
Valve stations		3 to 12 stations
4(A), 2(B) port location		Valve
Port size	1(P), 3/5(R) port	Rc 1/4
	4(A), 2(B) port	Rc 1/8, C6, C8
Applicable flat ribbon cable connector		Socket: 26 pins MIL, with strain relief (Conforming to MIL-C-83503)
Internal wiring		+COM (For -COM, please contact SMC separately.)
Applicable solenoid valve		VZ5□23- $\frac{1}{3}$ MOZ□-VZ3□- $\frac{01}{C8}$
Rated voltage		100 VAC 50/60 Hz, 110 VAC 50/60 Hz, 24 VDC, 12 VDC

Note) Withstand voltage specification of wiring unit part is equivalent to JIS C 0704 class 1.

Flow Characteristics

Manifold	Port size		Flow characteristics					
	1(P), 5/3(R) port	2(B), 4(A) port	1 → 4/2 (P → A/B)			4/2 → 5/3 (A/B → R)		
			C [dm ³ /(s·bar)]	b	Cv	C [dm ³ /(s·bar)]	b	Cv
VV5Z5-21P-01	1/4	1/8	2.1	0.36	0.55	2.3	0.26	0.54
VV5Z5-21P-C6	1/4	C6	1.4	0.32	0.36	2.1	0.24	0.50
VV5Z5-21P-C8	1/4	C8	1.8	0.37	0.50	2.1	0.20	0.50

Note) Value at manifold base mounted, 2 position single operating

How to Order Manifold

Instruct by specifying the valves, blanking plate assembly and connector assembly to be mounted on the manifold along with the manifold base model no.

(Example) VV5Z5-21P-07.....1 pc. (Manifold base)

*VZ5123-5MOZ-C8.... 3 pcs. (Valve)

*VZ5223-5MOZ-C8.... 3 pcs. (Valve)

*DXT199-22-3A..... 1 pc. (Blanking plate assembly)

*DXT192-52-1-4A..... 3 pcs. (Connector assembly)

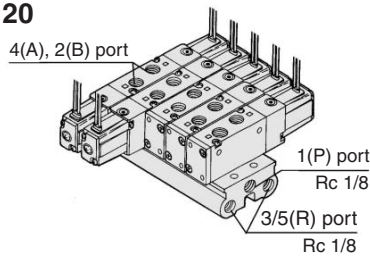
*DXT192-52-2-4A..... 3 pcs. (Connector assembly)

↳The asterisk denotes the symbol for assembly. Prefix it to the part nos. of the solenoid valve, etc.

5 Port Solenoid Valve Body Ported Series VZ5000

Common SUP/Common EXH

Type 20



Note) For more than 6 stations, supply air to both sides of P port and exhaust air from both sides of R port.

How to Order

VV5Z5 - 20 - 05 1 -

Stations		P, R port thread type	
02	2 stations	Nil	Rc
⋮	⋮	00F	G
15	15 stations	00N	NPT
		00T	NPTF

Applicable solenoid valve

VZ5□2□□□□^G□□□□⁰¹_D□□□□^{C6}_{C8}

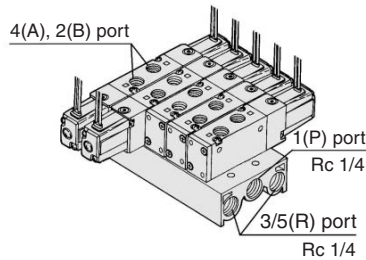
Applicable blanking plate assembly

DXT199-22-1A

Applicable individual EXH spacer assembly

DXT199-29-1A

Type 21



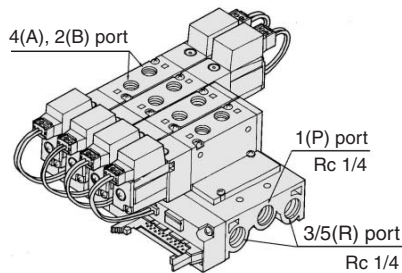
How to Order

VV5Z5 - 21 - 05 1 -

Stations		P, R port thread type	
02	2 stations	Nil	Rc
⋮	⋮	00F	G
20	20 stations	00N	NPT
		00T	NPTF

Note) For more than 10 stations, supply air to both sides of P port and exhaust air from both sides of R port.

Flat Ribbon Cable Type 21P



How to Order

VV5Z5 - 21P - 05 -

Stations		P, R port thread type	
03	3 stations	Nil	Rc
⋮	⋮	00F	G
12	12 stations	00N	NPT
		00T	NPTF

Applicable solenoid valve

VZ5□23-¹□□□□⁰¹₀₅□□□□^{C6}_{C8}

Applicable blanking plate assembly

DXT199-22-3A

Applicable connector assembly

DXT192-52-1-□A

(For 2 position single)

DXT192-52-1-□A

(For 2 position double, 3 position)

* 1: 100 VAC, 3: 110 VAC, 4: DC

For "How to order applicable connector assemblies", refer to page 3-3-7.

Note) For more than 10 stations, supply air to both sides of 1(P) port and exhaust air from both sides of 3 and 5(R) port.

VK

VZ

VF

VFR

VP4

VZS

VFS

VS4

VQ7

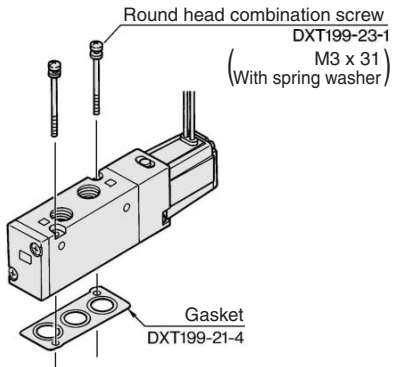
EVS

VFN

Series VZ5000

Option

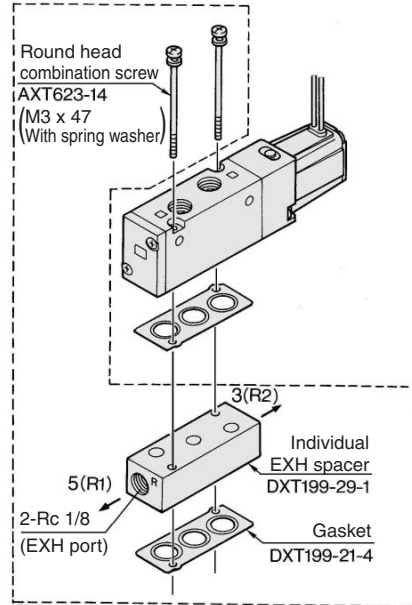
Combinations of Solenoid Valve, Manifold Gasket and Manifold Base



Applicable base
VV5Z5-20
VV5Z5-21
VV5Z5-21P

Individual EXH Spacer Assembly

DXT199-29-1A



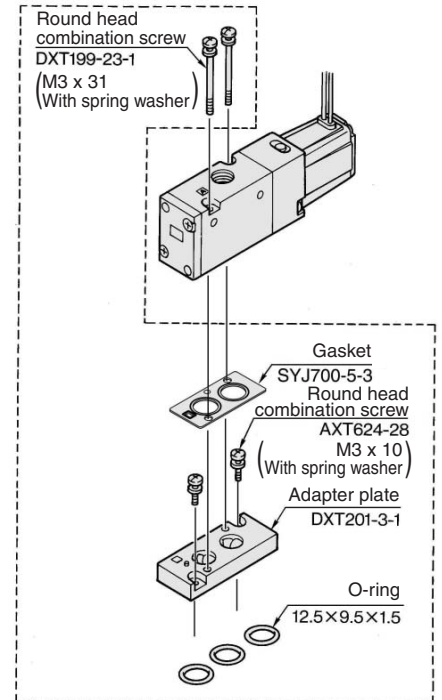
Applicable base
VV5Z5-20
VV5Z5-21

Note) Please contact SMC when using an individual EXH spacer assembly, an individual or an adapter plate assembly on VV5Z5-21P.

Installation of the VZ500 Valve on the VZ5000 Manifold

- Use of an adaptor plate makes it possible to mount Series VZ500 on the manifold base of Series VZ5000.
- The mounting direction is shown in the diagram below. Mount the solenoid so that it will be on the same side as the single solenoid of the Series VZ5000.

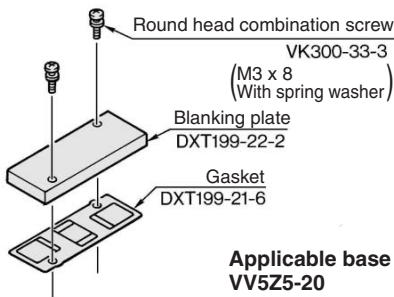
Adapter plate assembly DXT201-3-1A



Applicable base
VV5Z5-20
VV5Z5-21

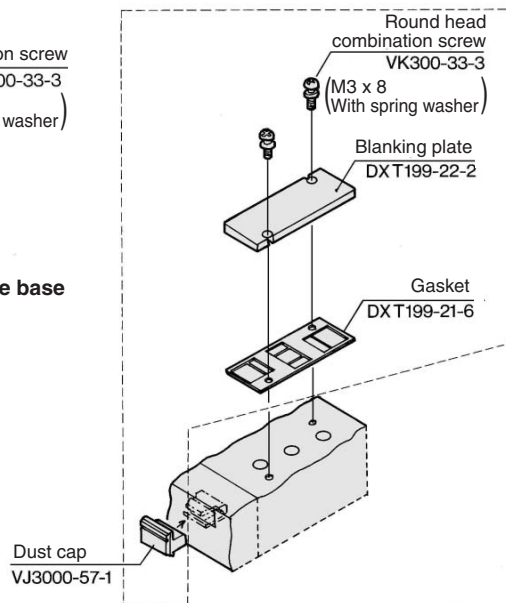
Blanking Plate Assembly

DXT199-22-1A



Applicable base
VV5Z5-20
VV5Z5-21

DXT199-22-3A



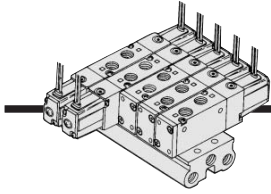
Applicable base
VV5Z5-21P

Caution

Mounting Screw Tightening Torques

M3: 0.8 N·m

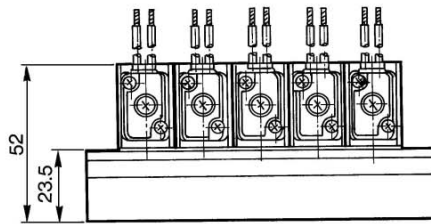
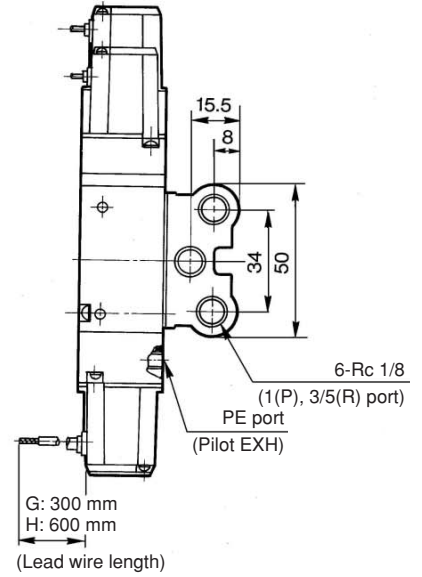
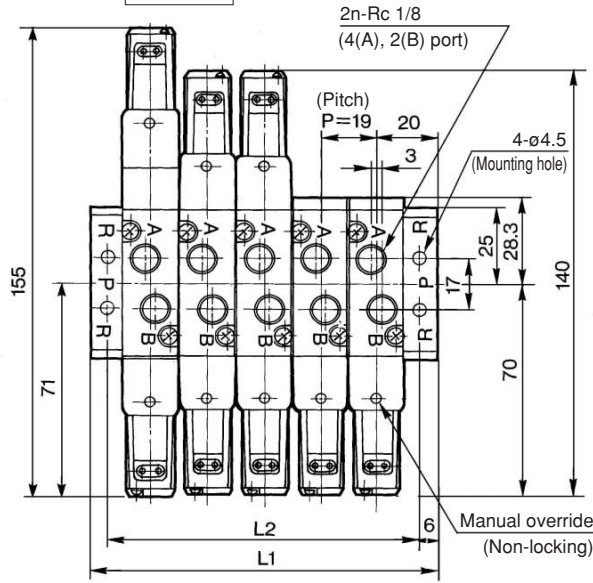
5 Port Solenoid Valve Body Ported Series VZ5000



Type 20 Manifold

VV5Z5-20-Station 1

Grommet (G), (H)

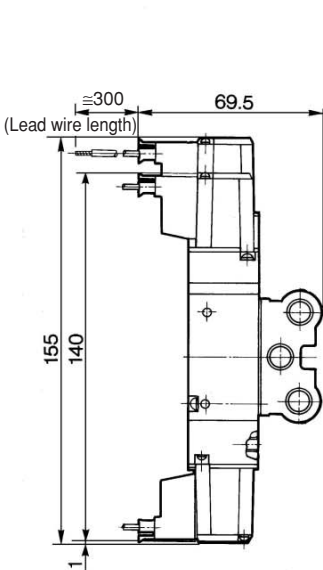


- VK
- VZ
- VF
- VFR
- VP4
- VZS
- VFS
- VS4
- VQ7
- EVS
- VFN

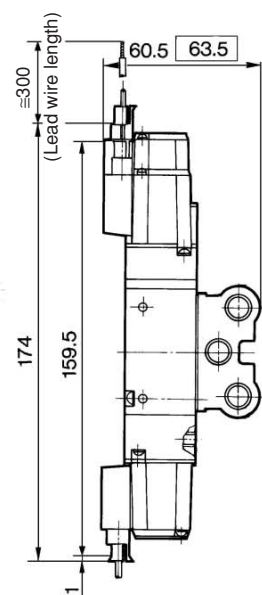
Stations	2	3	4	5	6	7	8	9	10	11	12	13	14	15
L ₁	59	78	97	116	135	154	173	192	211	230	249	268	287	306
L ₂	47	66	85	104	123	142	161	180	199	218	237	256	275	294

(mm)

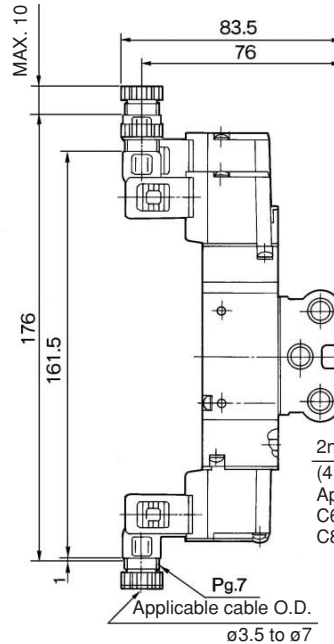
L plug connector (L)



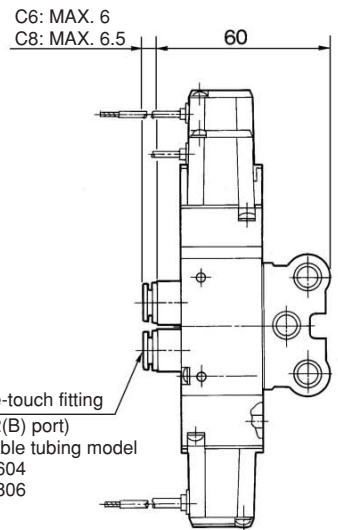
M plug connector (M)



DIN terminal (D)

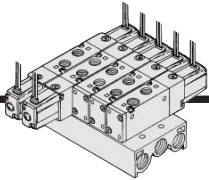


Built-in One-touch fittings



: With light/surge voltage suppressor

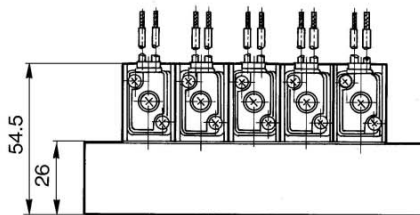
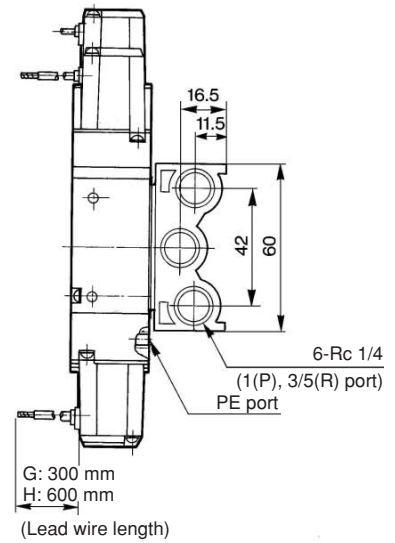
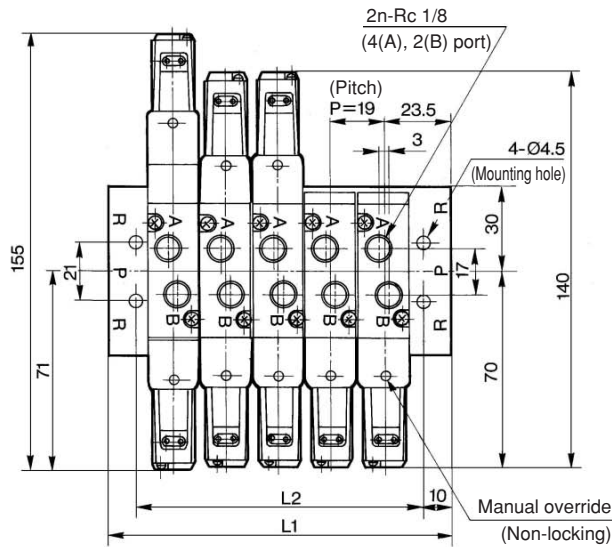
Series VZ5000



Type 21 Manifold

VV5Z5-21-Station 1

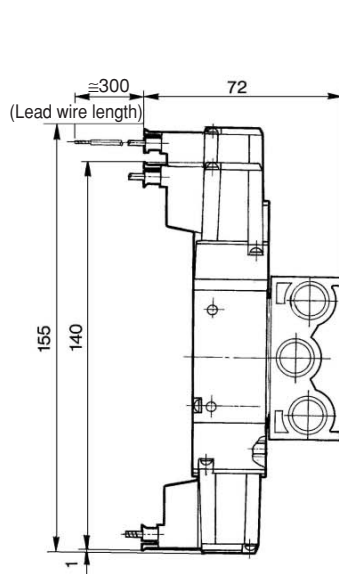
Grommet (G), (H)



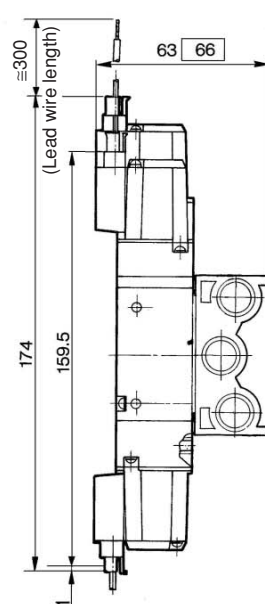
Stations	2	3	4	5	6	7	8	9	10	11	12	13	14	15	16	17	18	19	20
L ₁	66	85	104	123	142	161	180	199	218	237	256	275	294	313	332	351	370	389	408
L ₂	46	65	84	103	122	141	160	179	198	217	236	255	274	293	312	331	350	369	388

(mm)

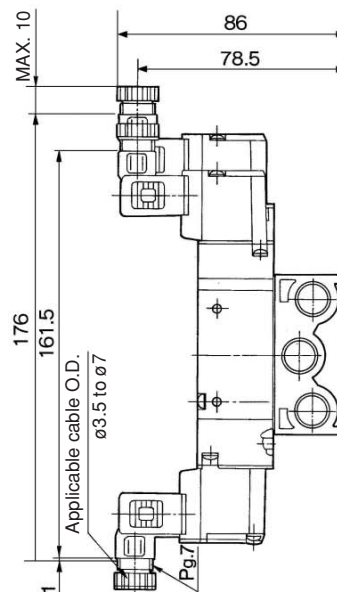
L plug connector (L)



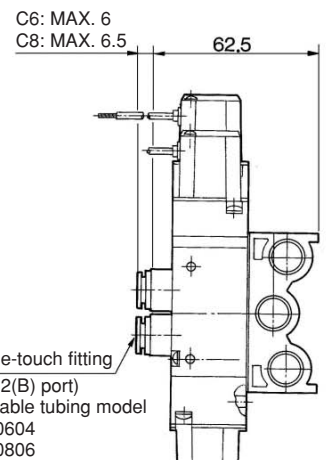
M plug connector (M)



DIN terminal (D)

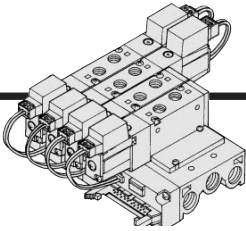


Built-in One-touch fittings



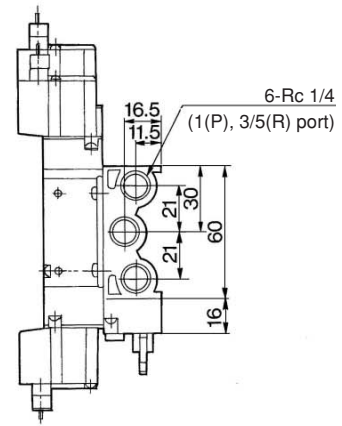
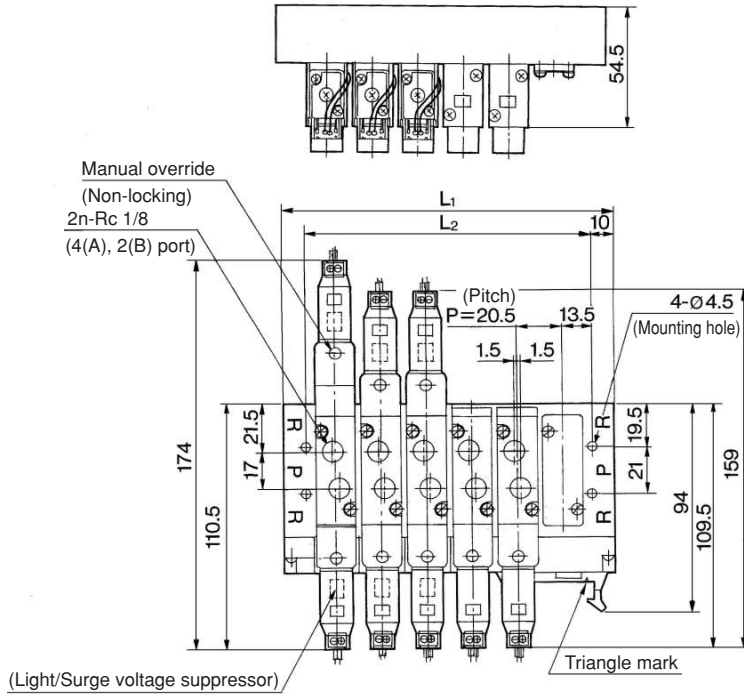
□: With light/surge voltage suppressor

5 Port Solenoid Valve Body Ported Series VZ5000

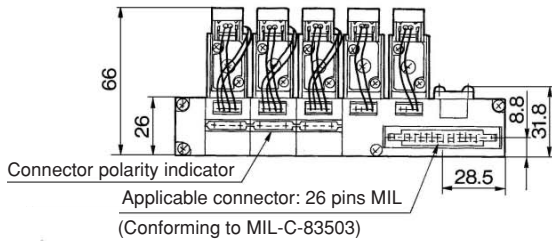


Type 21P Manifold

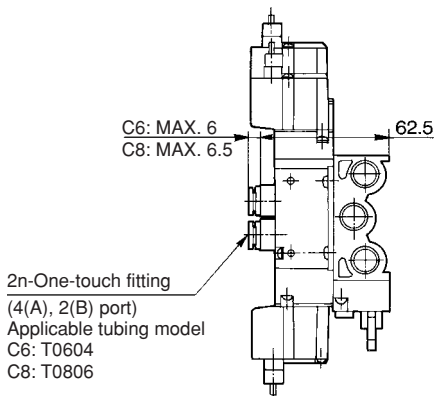
VV5Z5-21P-Station



(Station n).....(Station 1)



Built-in One-touch fittings



Stations	3	4	5	6	7	8	9	10	11	12
L ₁	88	108.5	129	149.5	170	190.5	211	231.5	252	272.5
L ₂	68	109	109	129.5	150	170.5	191	211.5	232	252.5

(mm)

VK

VZ

VF

VFR

VP4

VZS

VFS

VS4

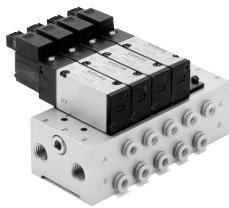
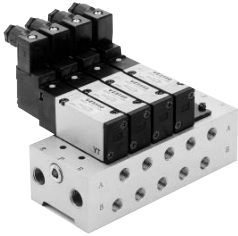
VQ7

EVS

VFN

Series VZ5000/Base Mounted Manifold Specifications

Manifold Standard



Manifold Specifications

Model		Type 40	Type 41	Type 42
Manifold type		Single base/B mount		
P(SUP), R(EXH)		Common SUP and EXH		
Valve stations		2 to 20		
4(A), 2(B) port porting specifications	Position	Base	Base	
	Direction	Bottom	Side	
Port size	1(P), 3/5(R) port	Rc 1/4		
	4(A), 2(B) port	Rc 1/8		O1 (Rc 1/8) C6 (One-touch fitting for ø6) C8 (One-touch fitting for ø8) B7 (One-touch fitting for 1/4") C9 (One-touch fitting for 5/16")

Flow Characteristics

Manifold	Port size		Flow characteristics					
	1(P), 5/3(R) port	2(B), 4(A) port	1 → 4/2 (P → A/B)			4/2 → 5/3 (A/B → R)		
			C [dm ³ /(s·bar)]	b	Cv	C [dm ³ /(s·bar)]	b	Cv
VV5Z5-40	1/4	1/8	2.1	0.28	0.51	2.5	0.23	0.59
VV5Z5-41	1/4	1/8	2.0	0.30	0.50	2.2	0.30	0.55
VV5Z5-42-C6	1/4	C6	1.5	0.32	0.38	2.2	0.23	0.52
VV5Z5-42-C8	1/4	C8	1.9	0.24	0.46	2.2	0.26	0.53

Note) Value at manifold base mounted, 2 position single operating

How to Order Manifold

Instruct by specifying the valves and blanking plate assembly to be mounted on the manifold along with the manifold base model no.

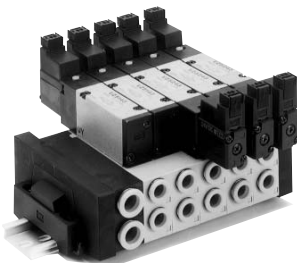
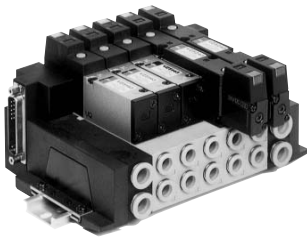
(Example) VV5Z5-41-031-01.....1 pc. (Manifold base)

*VZ5140-5G.....2 pcs. (Valve)

*DXT199-22-1A.....1 pc. (Blanking plate assembly)

↳The asterisk denotes the symbol for assembly. Prefix it to the part nos. of the solenoid valve, etc.

DIN Rail Manifold



Manifold Specifications

Model		Type 45	Type 45F
Manifold type		Stacking type non plug-in type	Stacking type plug-in type
P(SUP), R(EXH)		Common SUP and EXH	
Valve stations		2 to 20	
4(A), 2(B) port porting specifications	Position	Base	
	Direction	Side	
Port size	1(P), 3/5(R) port	C10 (One-touch fitting for ø10)	
	4(A), 2(B) port	C6 (One-touch fitting for ø6) C8 (One-touch fitting for ø8)	
Connector		—	MIL-C-24308 Applicable for D-sub connector JIS-X-5101
Internal wiring		—	COM ^{Note)}

Note) It is available at +COM or -COM.

Flow Characteristics

Manifold	Port size		Flow characteristics						
	1(P), 5/3(R) port	2(B), 4(A) port	1 → 4/2 (P → A/B)			4/2 → 5/3 (A/B → R)			
			C [dm ³ /(s·bar)]	b	Cv	C [dm ³ /(s·bar)]	b	Cv	
VV5Z5-45	VZ5□4□	C10	C6	1.5	0.31	0.38	2.2	0.17	0.52
		C10	C8	2.1	0.26	0.51	2.2	0.15	0.52

Note) Value at manifold base mounted, 2 position single operating

How to Order Manifold

Instruct by specifying the valves and blanking plate assembly to be mounted on the manifold along with the manifold base model no.

(Example) VV5Z5-45FD-06-C8C.....1 pc. (Manifold base)

*VZ5143-5FZ.....2 pcs. (Valve)

*VZ5243-5FZ.....3 pcs. (Valve)

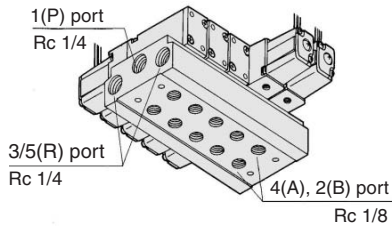
*VZ5000-65-1A.....1 pc. (Blanking plate assembly)

↳The asterisk denotes the symbol for assembly. Prefix it to the part nos. of the solenoid valve, etc.

5 Port Solenoid Valve Base Mounted Series VZ5000

Common SUP/Common EXH

Type 40



How to Order

VV5Z5 - 40 - 05 2 - 01

Stations	4(A), 2(B) Port size	P, R port thread type	
02 2 stations	01 Rc 1/8	Nil	Rc
...		F	G
20 20 stations		N	NPT
		T	NPTF

Note) For more than 10 stations, supply air to both sides of 1(P) port and exhaust air from both sides of 3 and 5(R) port.

Applicable solenoid valve

VZ5□4□-□□□□
G
D

Applicable blanking plate assembly
DXT199-22-1A

Applicable individual EXH spacer assembly
DXT199-29-2A

Applicable individual SUP spacer assembly
DXT199-35-1A

Applicable interface regulator
ARBZ5000-00-P

VK

VZ

VF

VFR

VP4

VZS

VFS

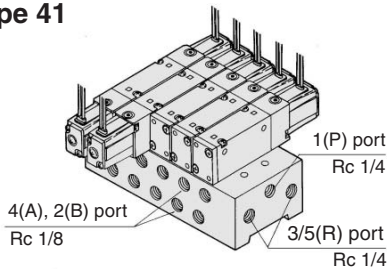
VS4

VQ7

EVS

VFN

Type 41



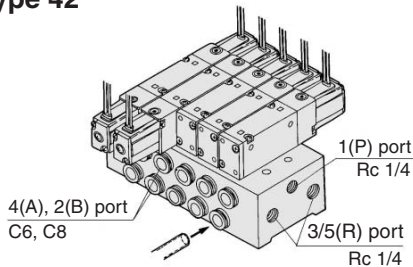
How to Order

VV5Z5 - 41 - 05 1 - 01

Stations	4(A), 2(B) Port size	P, R port thread type	
02 2 stations	01 Rc 1/8	Nil	Rc
...		F	G
20 20 stations		N	NPT
		T	NPTF

Note) For more than 8 stations, supply air to both sides of P port and exhaust air from both sides of R port.

Type 42



How to Order

VV5Z5 - 42 - 05 1 - C6

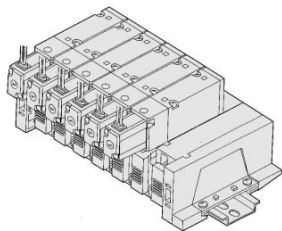
Stations	A, B port size	P, R port thread type	
02 2 stations	C6 One-touch fitting for ø6 C8 One-touch fitting for ø8 B7 One-touch fitting for 1/4" B9 One-touch fitting for 5/16"	Nil	Rc
...		F	G
20 20 stations		N	NPT
		T	NPTF

Note) For more than 8 stations, supply air to both sides of 1(P) port and exhaust air from both sides of 3 and 5(R) port.

DIN Rail Manifold

Common SUP/Common EXH

Type 45 (Non plug-in type)



How to Order

VV5Z5 - 45 - 05 D - C8 C

Stations	SUP/EXH block mounting position	4 (A), 2 (B) port size																					
02 2 stations	<table border="1"> <thead> <tr> <th>Symbol</th> <th>Position</th> <th>Applicable stations</th> </tr> </thead> <tbody> <tr> <td>U</td> <td>U side</td> <td>2 to 10 stations</td> </tr> <tr> <td>D</td> <td>D side</td> <td>2 to 10 stations</td> </tr> <tr> <td>B</td> <td>Both sides</td> <td>2 to 20 stations</td> </tr> <tr> <td>M*</td> <td>Special specifications</td> <td>Special specifications</td> </tr> </tbody> </table>	Symbol	Position	Applicable stations	U	U side	2 to 10 stations	D	D side	2 to 10 stations	B	Both sides	2 to 20 stations	M*	Special specifications	Special specifications	<table border="1"> <tbody> <tr> <td>C6</td> <td>One-touch fitting for ø6</td> </tr> <tr> <td>C8</td> <td>One-touch fitting for ø8</td> </tr> <tr> <td>M*</td> <td>Mixed</td> </tr> </tbody> </table>	C6	One-touch fitting for ø6	C8	One-touch fitting for ø8	M*	Mixed
Symbol		Position	Applicable stations																				
U		U side	2 to 10 stations																				
D		D side	2 to 10 stations																				
B	Both sides	2 to 20 stations																					
M*	Special specifications	Special specifications																					
C6	One-touch fitting for ø6																						
C8	One-touch fitting for ø8																						
M*	Mixed																						
...																							
20 20 stations																							

* For special specifications, indicate separately by the manifold specification sheet.

* In the case of mixed specifications (M), indicate separately on the manifold specification sheet.

Applicable solenoid valve

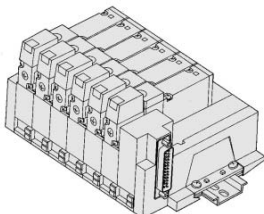
VZ5□4□-□□□□
G
D

Applicable blanking plate assembly
VZ5000-65-2A

DIN rail length specified

Nil	Standard length	
3	For 3 stations	(Specify a longer rail than the standard length.)
...
20	For 20 stations	(Specify a longer rail than the standard length.)

Type 45F (Plug-in type)



How to Order

VV5Z5 - 45F D - 05 C8 C

Connector mounting direction

Symbol	Mounting direction	Applicable stations
U	U side	2 to 10 stations
D	D side	
B	Both sides	

Stations SUP/EXH block mounting position

Stations	SUP/EXH block mounting position						
02 2 stations	<table border="1"> <tbody> <tr> <td>Nil</td> <td>For 2 to 10 stations : One side (Same as direction of connector mount)</td> </tr> <tr> <td>B</td> <td>For 2 to 10 stations: Both sides</td> </tr> <tr> <td>M*</td> <td>Special specifications</td> </tr> </tbody> </table>	Nil	For 2 to 10 stations : One side (Same as direction of connector mount)	B	For 2 to 10 stations: Both sides	M*	Special specifications
Nil		For 2 to 10 stations : One side (Same as direction of connector mount)					
B		For 2 to 10 stations: Both sides					
M*		Special specifications					
...							
20 20 stations							

* For special specifications, indicate separately by the manifold specification sheet.

4(A), 2(B) port size

C6	One-touch fitting for ø6
C8	One-touch fitting for ø8
M*	Mixed

DIN rail length specified

Nil	Standard length	
3	For 3 stations	(Specify a longer rail than the standard length.)
...
20	For 20 stations	(Specify a longer rail than the standard length.)

* In the case of mixed specifications (M), indicate separately on the manifold specification sheet.

Applicable solenoid valve

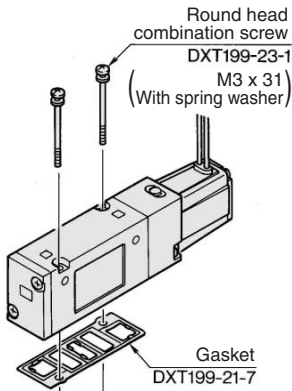
VZ5□43-□F□□

Applicable blanking plate assembly
VZ5000-65-1A

Series VZ5000

Option/Standard Manifold

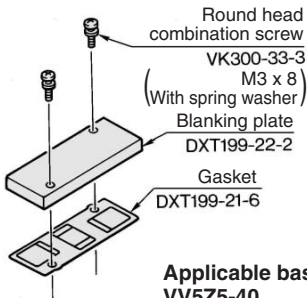
Combinations of Solenoid Valve, Manifold Gasket and Manifold Base



Applicable base
 VV5Z5-40
 VV5Z5-41
 VV5Z5-42

Blanking Plate Assembly

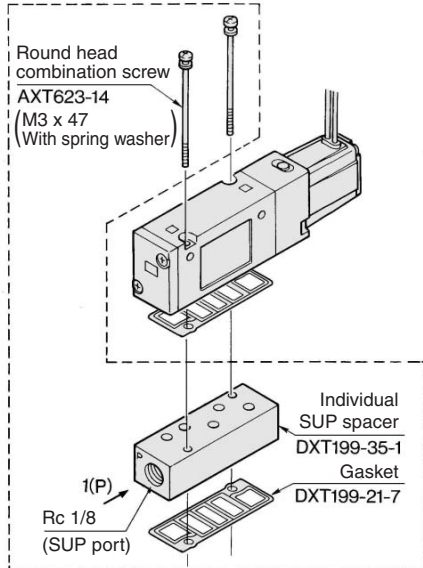
DXT199-22-1A



Applicable base
 VV5Z5-40
 VV5Z5-41
 VV5Z5-42

Individual SUP Spacer Assembly

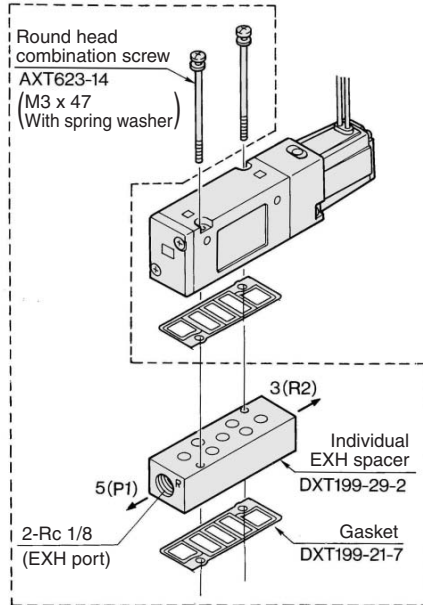
DXT199-35-1A



Applicable base
 VV5Z5-40
 VV5Z5-41
 VV5Z5-42

Individual EXH Spacer Assembly

DXT199-29-2A

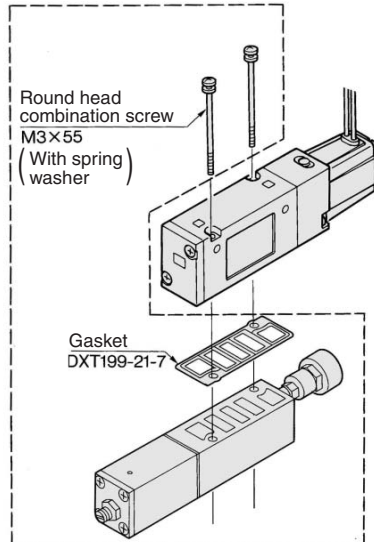


Applicable base
 VV5Z5-40
 VV5Z5-41
 VV5Z5-42

Interface Regulator (P port regulation)

Interface style regulators can be placed on top of the manifold base to reduce the pressure of each of the P valves.

ARBZ5000-00-P



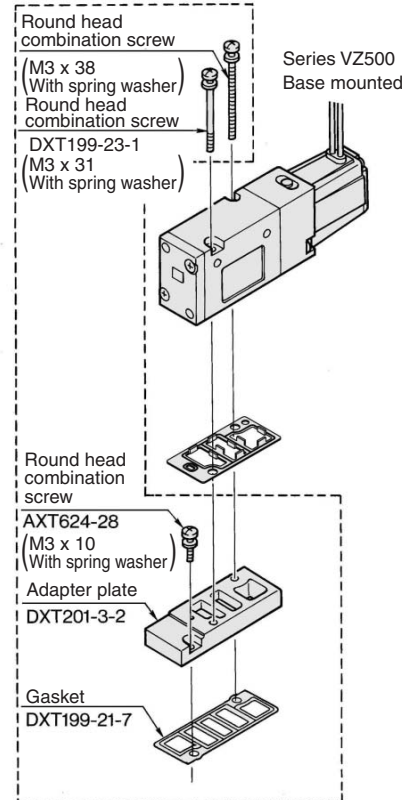
Before using, refer to page 3-3-8.

Applicable base
 VV5Z5-40
 VV5Z5-41
 VV5Z5-42

Installation of the VZ500 Valve on the VZ5000 Manifold

- Use of an adaptor plate makes it possible to mount Series VZ500 on the manifold base of Series VZ5000.
- The mounting direction is shown in the diagram below. Mount the solenoid so that it will be on the same side as the single solenoid of the Series VZ5000.
- In the case of base mounting, 2(A) port of 3 port valve should be 2(B) port of manifold base.

Adapter Plate Assembly DXT201-3-2A



Applicable base
 VV5Z5-40
 VV5Z5-41
 VV5Z5-42

⚠ Caution

Mounting Screw Tightening Torques

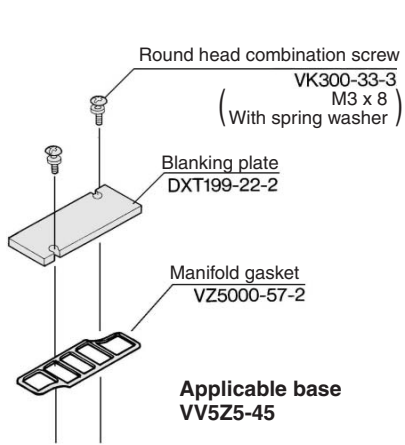
M3: 0.8 N·m

5 Port Solenoid Valve Base Mounted Series VZ5000

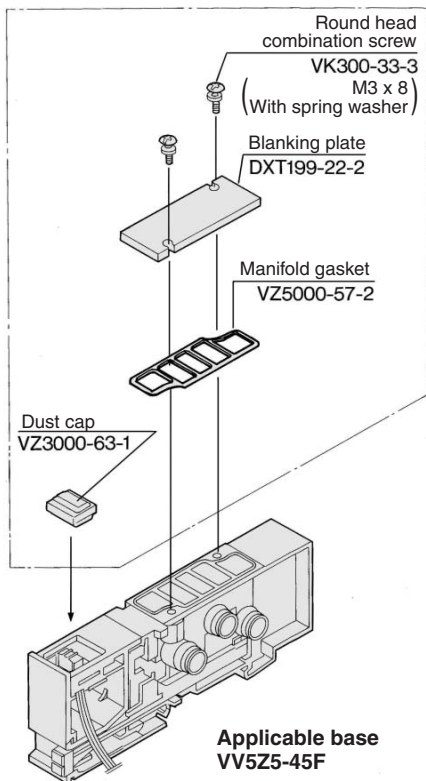
Option/DIN Rail Manifold

Blanking Plate Assembly

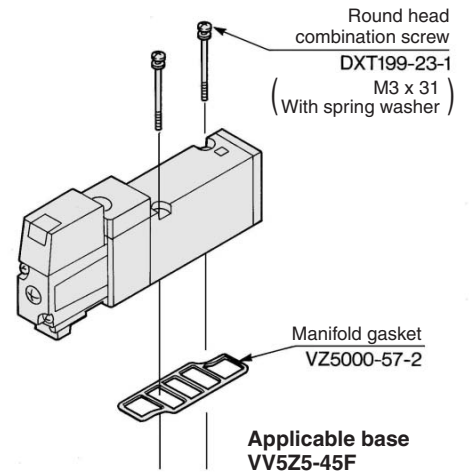
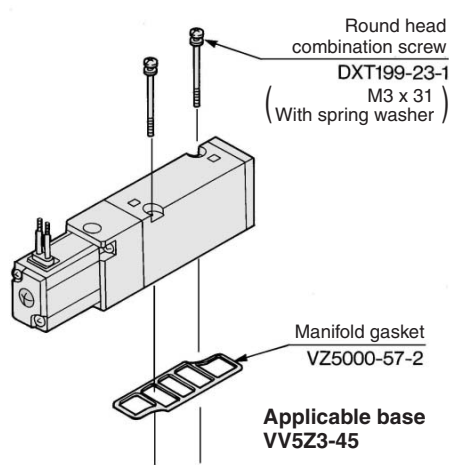
VZ5000-65-2A



VZ5000-65-1A



Combination of Solenoid Valve, Gasket and Manifold Base



SUP Block Disk

By installing a SUP block disk in the pressure supply passage of a manifold valve, it is possible to supply two or more different high and low pressures to one manifold.

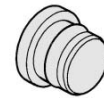
VZ5000-68-1A



EXH Block Disk

By installing an EXH block disk in the exhaust passage of a manifold valve, it is possible to divide the valve's exhaust so that it does not affect another valve.

VZ5000-68-1A



Applicable Plug Assembly (D-sub connector cable assembly)

Cable length	Assembly part no.	Component parts
1.5 m	VVZS3000-21A-1	Plug MIL standard D-sub connector Number of terminals: 25 Cable: 25 cores x 0.3 mm ²
3 m	VVZS3000-21A-2	
5 m	VVZS3000-21A-3	
8 m	VVZS3000-21A-4	



For details, refer to page 3-3-8.

⚠ Caution

Mounting Screw Tightening Torques

M2.5: 0.32 N·m
(For stacking type manifold)

VK

VZ

VF

VFR

VP4

VZS

VFS

VS4

VQ7

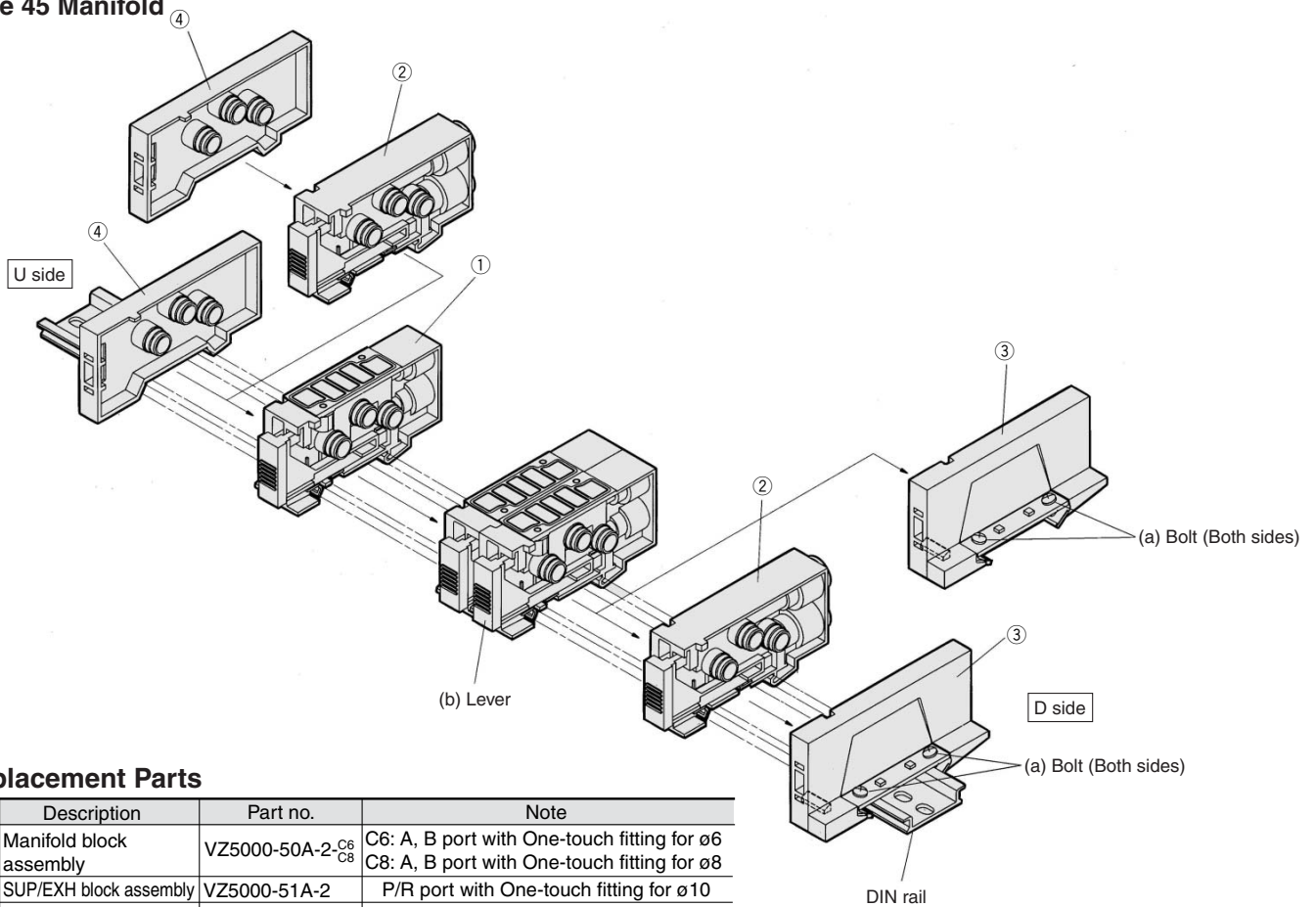
EVS

VFN

Series VZ5000

Exploded View/DIN Rail Manifold

Type 45 Manifold



Replacement Parts

No.	Description	Part no.	Note
①	Manifold block assembly	VZ5000-50A-2- ^{C6} / _{C8}	C6: A, B port with One-touch fitting for $\phi 6$ C8: A, B port with One-touch fitting for $\phi 8$
②	SUP/EXH block assembly	VZ5000-51A-2	P/R port with One-touch fitting for $\phi 10$
③	End block assembly	VZ5000-52A-2D	For D side
④	End block assembly	VZ5000-52A-2U	For U side

How to Increase Manifold Base

Station expansion is possible at any position.

- (1) Loosen (both) bolts (a), which are securing the manifold onto the DIN rail, 1 to 2 turns.
(To remove the manifold base from the DIN rail, loosen the bolts 4 to 5 turns.)
- (2) Press lever (b) to disconnect the manifold block assembly at the location in which you wish to place an additional manifold block assembly. (However, there are no levers between ① and ④ or between ③ and ④. They can be disconnected by merely pulling them apart.)
- (3) Mount additional manifold block assembly on the DIN rail as shown in the Fig. (2).
- (4) Press the block assemblies and tighten the bolts (a) to fix them to the DIN rail.


 Note) When there are 10 or fewer manifold block assemblies, and more are added to make a total of 11 or more, a supply/exhaust block assembly must also be added.

Fig. (1)

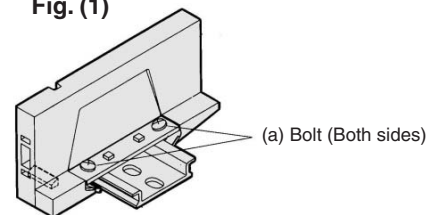
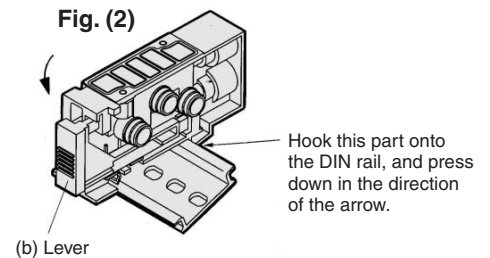
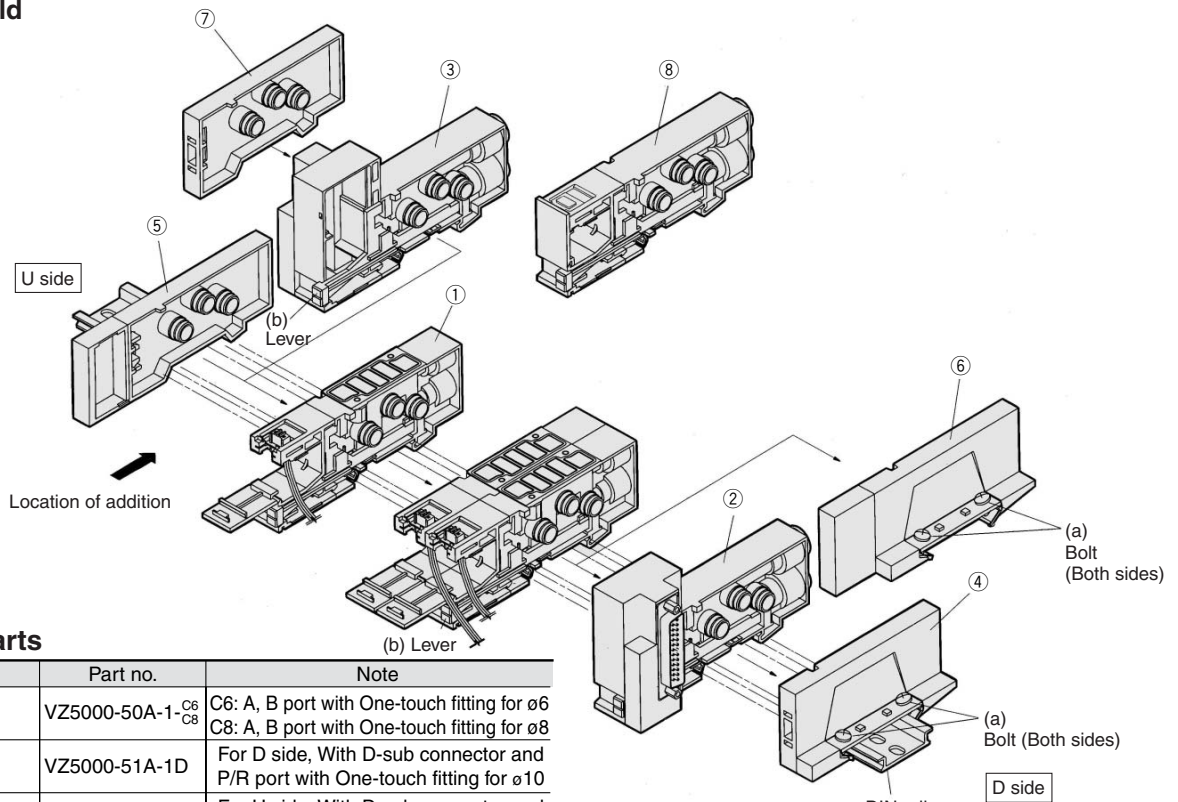


Fig. (2)



Exploded View/DIN Rail Manifold

Type 45F Manifold



Replacement Parts

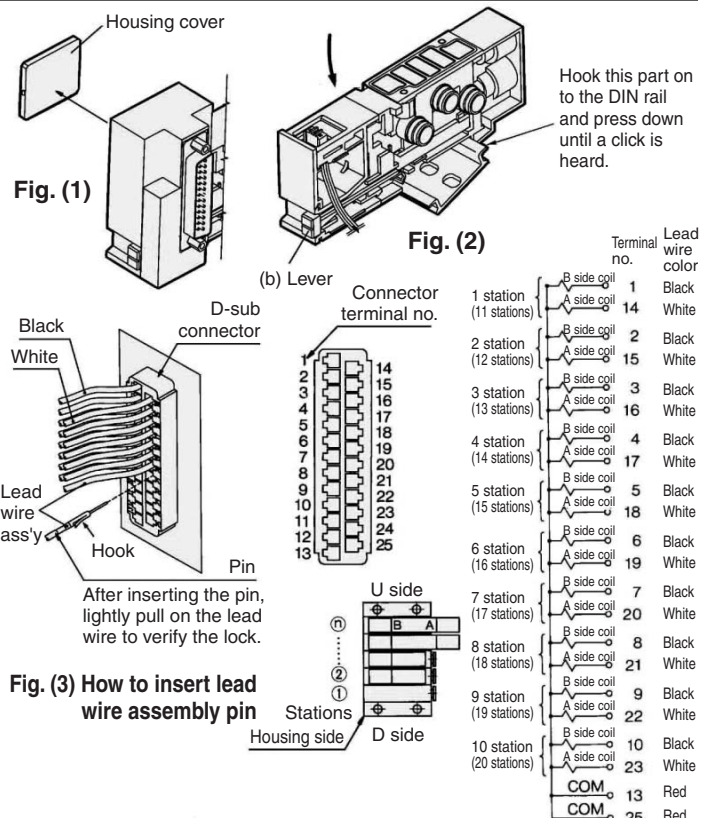
No.	Description	Part no.	Note
①	Manifold block assembly	VZ5000-50A-1-C6 C8	C6: A, B port with One-touch fitting for $\phi 6$ C8: A, B port with One-touch fitting for $\phi 8$
②	SUP/EXH block assembly	VZ5000-51A-1D	For D side, With D-sub connector and P/R port with One-touch fitting for $\phi 10$
③	SUP/EXH block assembly	VZ5000-51A-1U	For U side, With D-sub connector and P/R port with One-touch fitting for $\phi 10$
④	End block assembly	VZ5000-52A-2D	For D side, set with ②
⑤	End block assembly	VZ5000-52A-1U	For U side
⑥	End block assembly	VZ5000-52A-1D	For D side
⑦	End block assembly	VZ5000-52A-2U	For U side, set with ③
⑧	SUP/EXH block assembly	VZ5000-51A-1M	Without D-sub connector, For indicated location P/R port with One-touch fitting for $\phi 10$

How to Increase Manifold Base

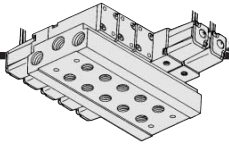
To add a manifold block assembly, add it to the U side so that the terminal number of the D-sub connector and the valve link position will be in accordance with the circuit diagram.

- (1) Loosen (both) bolts (a), which are securing the manifold onto the DIN rail, 1 to 2 turns. (To remove the manifold base from the DIN rail, loosen the bolts 4 to 5 turns.)
- (2) Using a flat screwdriver, press lever (b) to disengage the link of the manifold block assembly on the U side or the D side from the SUP/EXH block assembly or from the end block assembly. (However, there are no levers between ⑤ and ①. They can be disconnected by merely pulling them apart.)
- (3) Remove the housing cover from the D-sub connector portion of the SUP/EXH block assembly. (Refer to Fig. (1).)
- (4) Following the procedure shown in Fig. (2), mount the manifold block assembly to be added onto the DIN rail. As shown in Fig. (3), insert the pin of the lead wire assembly into the D-sub connector, and attach the round crimped terminal to the screw that connects the wires.
- (5) Press the block assemblies and tighten the bolts (a) to fix them to the DIN rail.

Note When there are 10 or fewer manifold block assemblies, and more are added to make a total of 11 or more, a supply/exhaust block assembly must also be added.



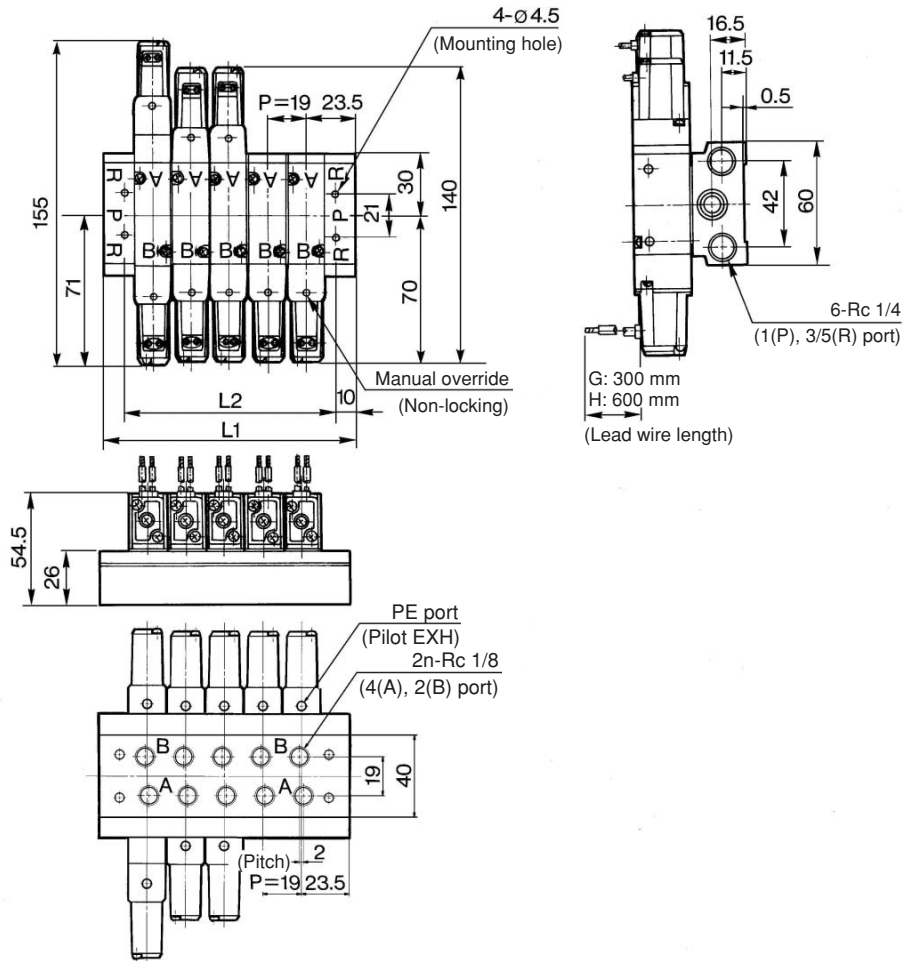
Series VZ5000



Type 40 Manifold: Bottom Ported

VV525-40-Station 2-01

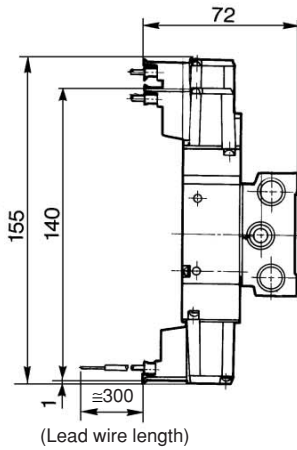
Grommet (G), (H)



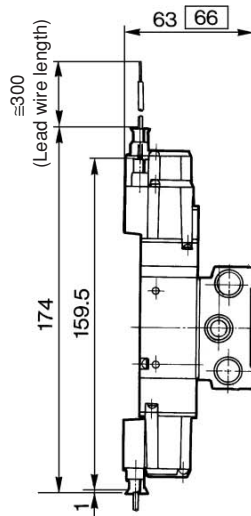
Stations	2	3	4	5	6	7	8	9	10	11	12	13	14	15	16	17	18	19	20
L ₁	66	85	104	123	142	161	180	199	218	237	256	275	294	313	332	351	370	389	408
L ₂	46	65	84	103	122	141	160	179	198	217	236	255	274	293	312	331	350	369	388

(mm)

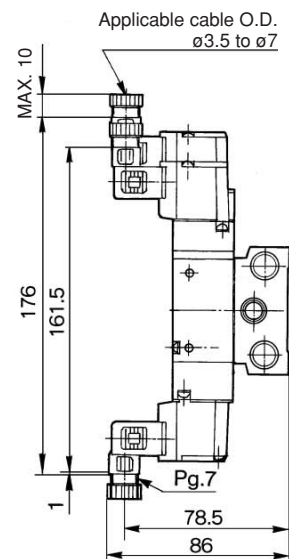
L plug connector (L)



M plug connector (M)

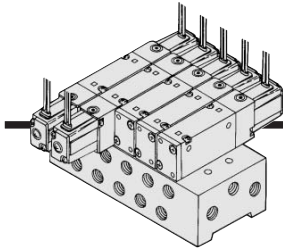


DIN terminal (D)



□: With light/surge voltage suppressor

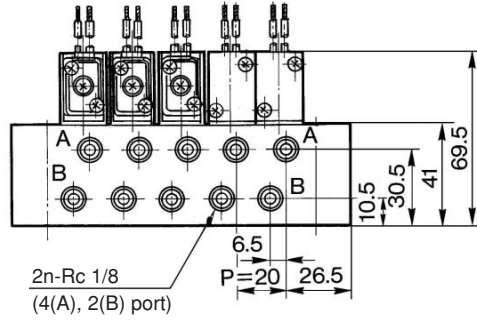
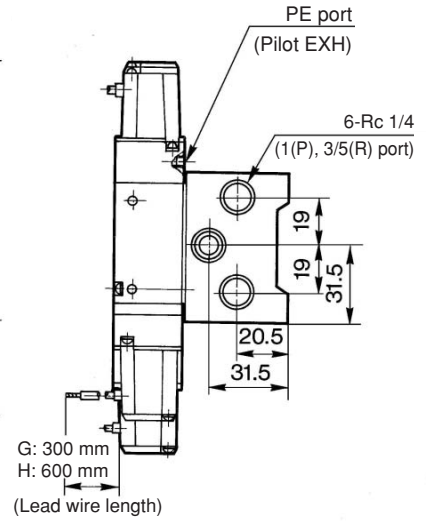
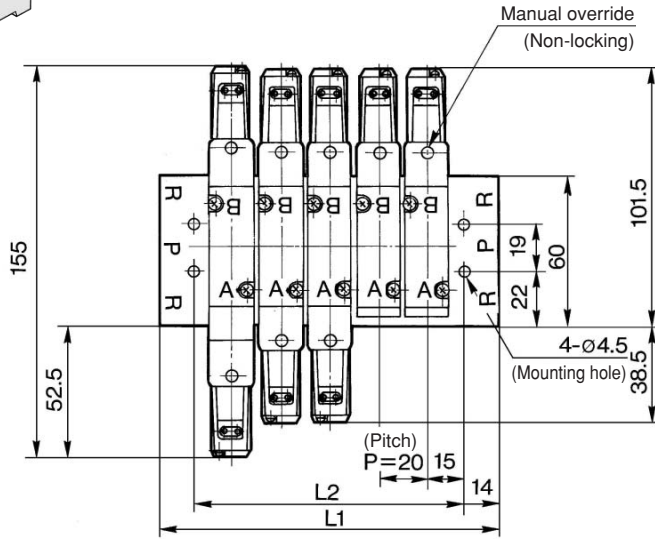
5 Port Solenoid Valve Base Mounted Series VZ5000



Type 41 Manifold: Side Ported

VV525-41-Station 1-01

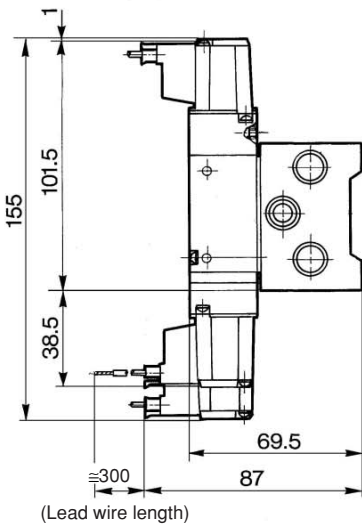
Grommet (G), (H)



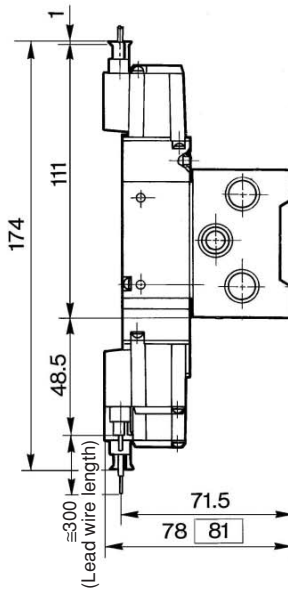
- VK
- VZ
- VF
- VFR
- VP4
- VZS
- VFS
- VS4
- VQ7
- EVS
- VFN

Stations	2	3	4	5	6	7	8	9	10	11	12	13	14	15	16	17	18	19	20
L ₁	78	98	118	138	158	178	198	218	238	258	278	298	318	338	358	378	398	418	438
L ₂	50	70	90	110	130	150	170	190	210	230	250	270	290	310	330	350	370	390	410

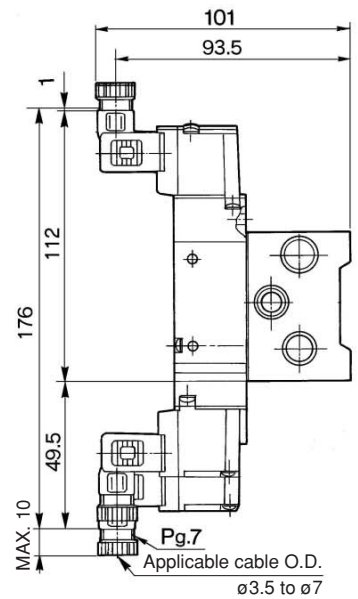
L plug connector (L)



M plug connector (M)



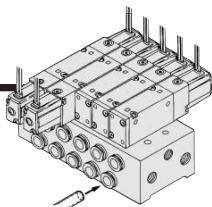
DIN terminal (D)



□: With light/surge voltage suppressor

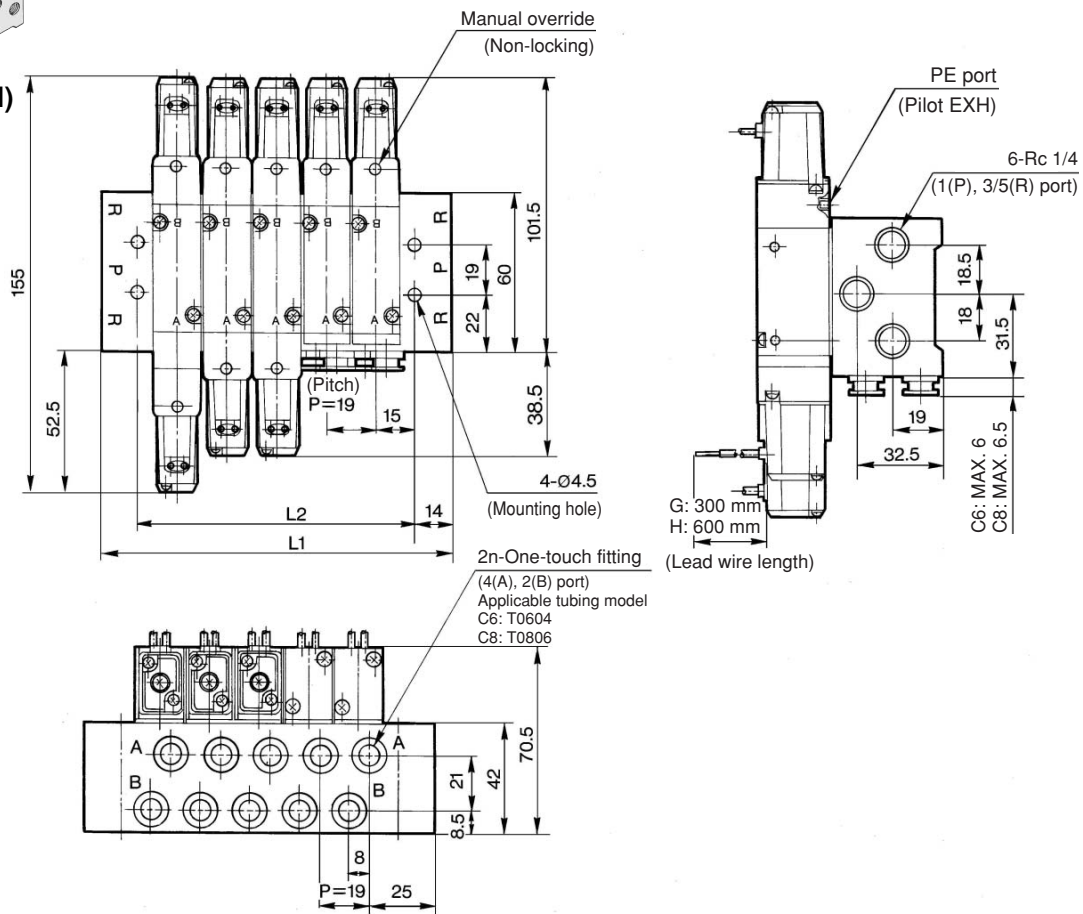
Series VZ5000

Type 42 Manifold: Side Ported



VV5Z5-42-Station 1- $\overset{C6}{\square}$ $\overset{C8}{\square}$

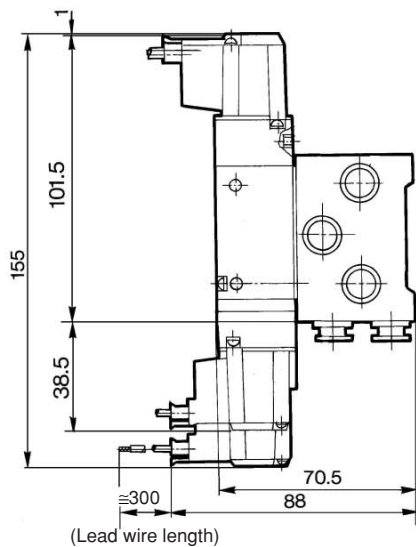
Grommet (G), (H)



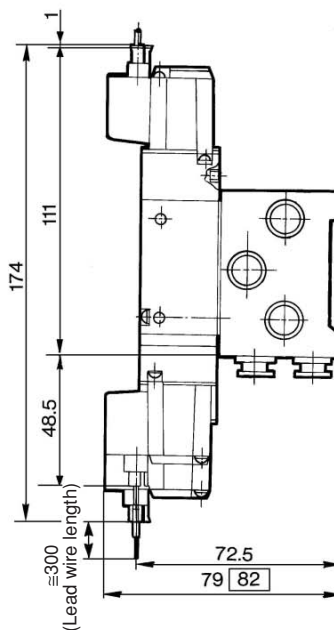
Stations	2	3	4	5	6	7	8	9	10	11	12	13	14	15	16	17	18	19	20
L ₁	77	96	115	134	153	172	191	210	229	248	267	286	305	324	343	362	381	400	419
L ₂	49	68	87	106	125	144	163	182	201	220	239	258	277	296	315	334	353	372	391

(mm)

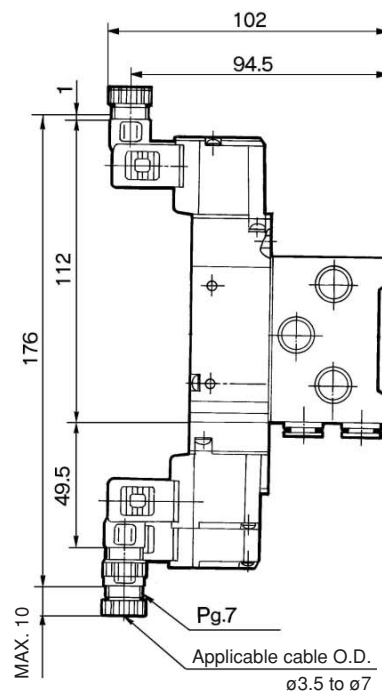
L plug connector (L)



M plug connector (M)

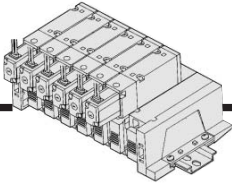


DIN terminal (D)



\square : With light/surge voltage suppressor

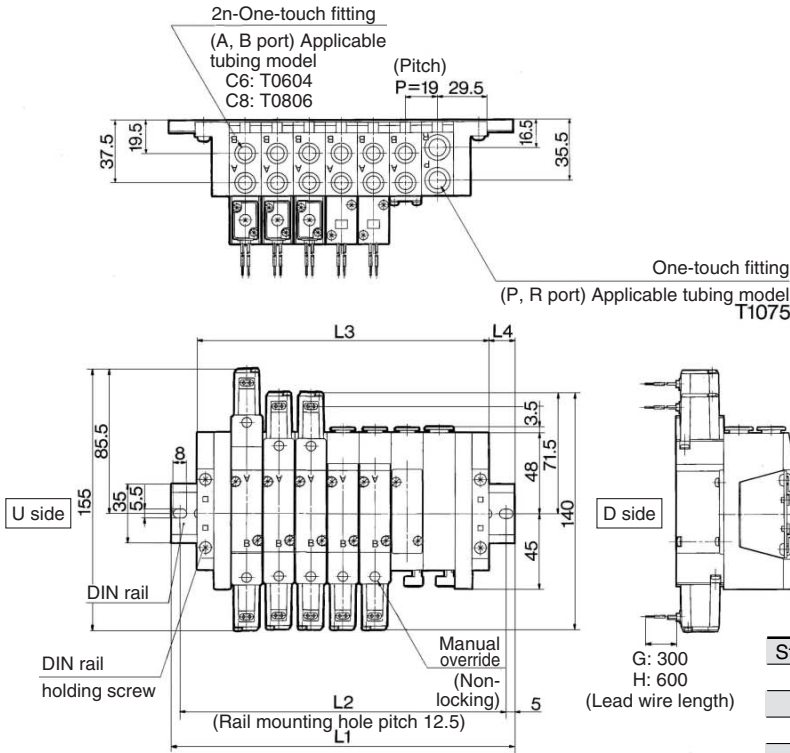
5 Port Solenoid Valve Base Mounted Series VZ5000



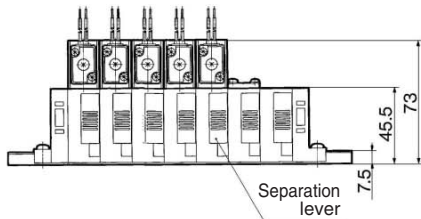
Type 45 DIN Rail Manifold (Non Plug-in): Side Ported

VV525-45-Station D- C6C
C8C

Grommet (G), (H)

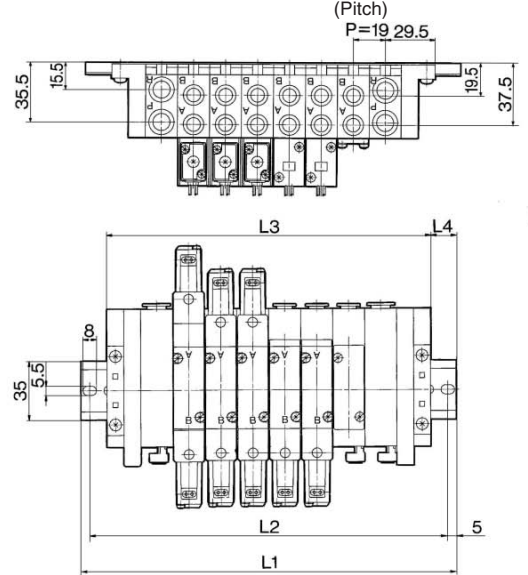


(Station n).....(Station 1)



Stations	2	3	4	5	6	7	8	9	10
L ₁	123	148	160.5	185.5	198	223	235.5	260.5	273
L ₂	112.5	137.5	150	175	187.5	212.5	225	250	262.5
L ₃	97	116	135	154	173	192	211	230	249
L ₄	13	16	13	16	12.5	15.5	12.5	15.5	12

VV525-45-Station B- C6C C8C



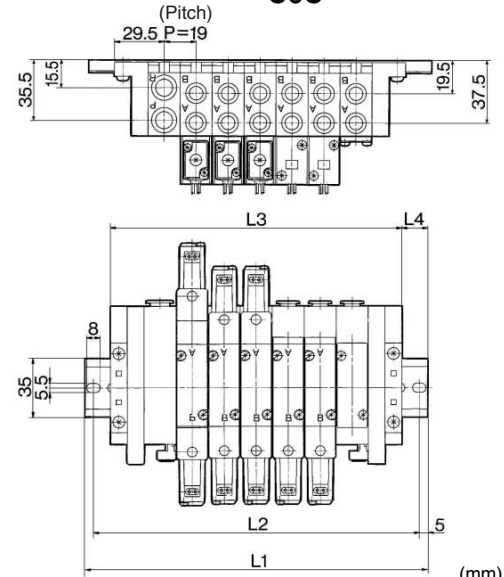
Stations	2	3	4	5	6	7	8	9	10
L ₁	148	160.5	185.5	198	223	235.5	260.5	273	298
L ₂	137.5	150	175	187.5	212.5	225	250	262.5	287.5
L ₃	116	135	154	173	192	211	230	249	268
L ₄	16	13	16	12.5	15.5	12.5	15.5	12	15

(mm)

Stations	11	12	13	14	15	16	17	18	19	20
L ₁	310.5	335.5	348	373	385.5	410.5	423	448	473	485.5
L ₂	300	325	337.5	362.5	375	400	412.5	437.5	462.5	475
L ₃	287	306	325	344	363	382	401	420	439	458
L ₄	12	15	11.5	14.5	11.5	14.5	11	14	17	14

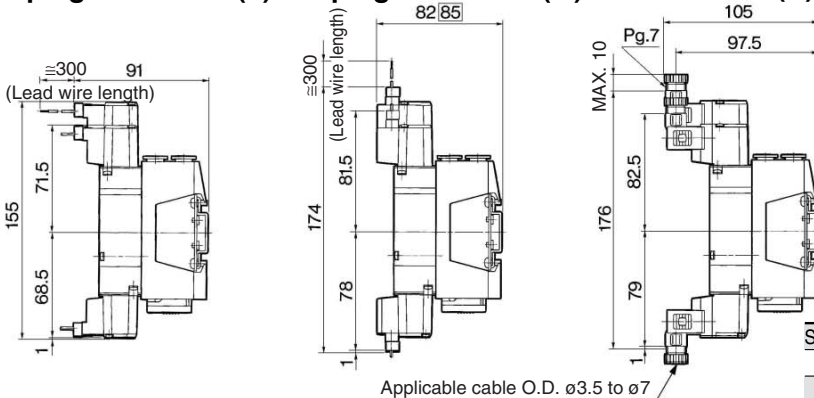
(mm)

VV525-45-Station U- C4C C6C

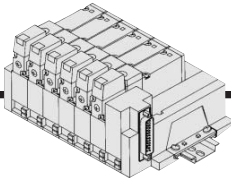


Stations	2	3	4	5	6	7	8	9	10
L ₁	123	148	160.5	185.5	198	223	235.5	260.5	273
L ₂	112.5	137.5	150	175	187.5	212.5	225	250	262.5
L ₃	97	116	135	154	173	192	211	230	249
L ₄	13	16	13	16	12.5	15.5	12.5	15.5	12

L plug connector (L) M plug connector (M) DIN terminal (D)

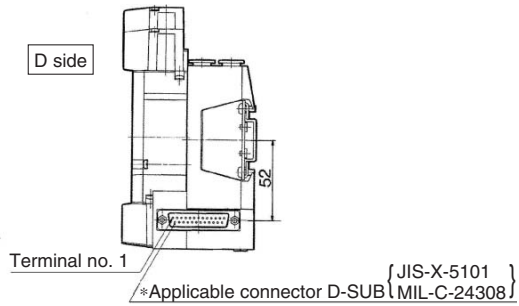
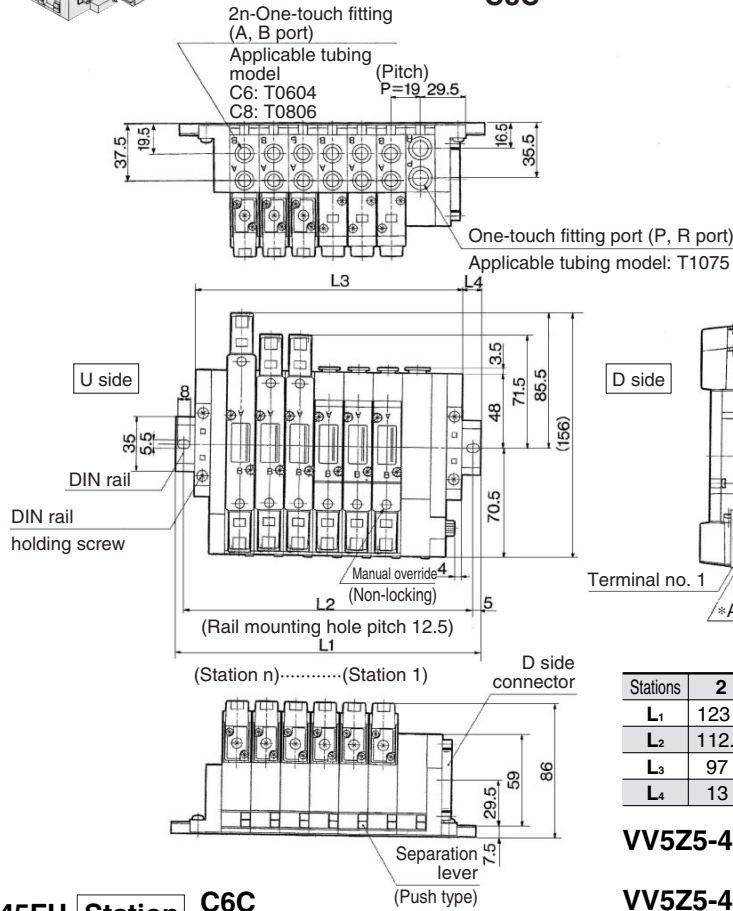


Series VZ5000



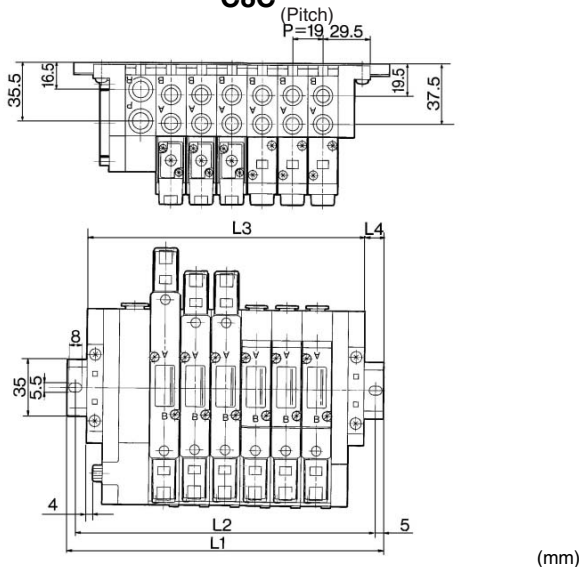
Type 45F DIN Rail Manifold (Plug-in): Side Ported

**VV5Z5-45FD-Station - C6C
C8C**



Stations	2	3	4	5	6	7	8	9	10
L ₁	123	148	160.5	185.5	198	223	235.5	260.5	273
L ₂	112.5	137.5	150	175	187.5	212.5	225	250	262.5
L ₃	97	116	135	154	173	192	211	230	249
L ₄	13	16	13	16	12.5	15.5	12.5	15.5	12

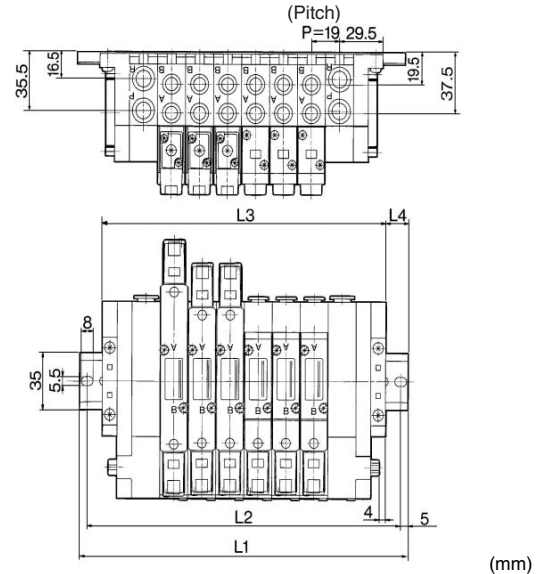
**VV5Z5-45FU-Station - C6C
C8C**



Stations	2	3	4	5	6	7	8	9	10
L ₁	123	148	160.5	185.5	198	223	235.5	260.5	273
L ₂	112.5	137.5	150	175	187.5	212.5	225	250	262.5
L ₃	97	116	135	154	173	192	211	230	249
L ₄	13	16	13	16	12.5	15.5	12.5	15.5	12

**VV5Z5-45FD_D-Station B- C6C
C8C (2 to 10 stations)**

**VV5Z5-45FB-Station - C6C
C8C (11 to 20 stations)**



Stations	2	3	4	5	6	7	8	9	10
L ₁	148	160.5	185.5	198	223	235.5	260.5	273	298
L ₂	137.5	150	175	187.5	212.5	225	250	262.5	287.5
L ₃	116	135	154	173	192	211	230	249	268
L ₄	16	13	16	12.5	15.5	12.5	15.5	12	15

Stations	11	12	13	14	15	16	17	18	19	20
L ₁	310.5	335.5	348	373	385.5	410.5	423	448	473	485.5
L ₂	300	325	337.5	362.5	375	400	412.5	437.5	462.5	475
L ₃	287	306	325	344	363	382	401	420	439	458
L ₄	12	15	11.5	14.5	11.5	14.5	11	14	17	14